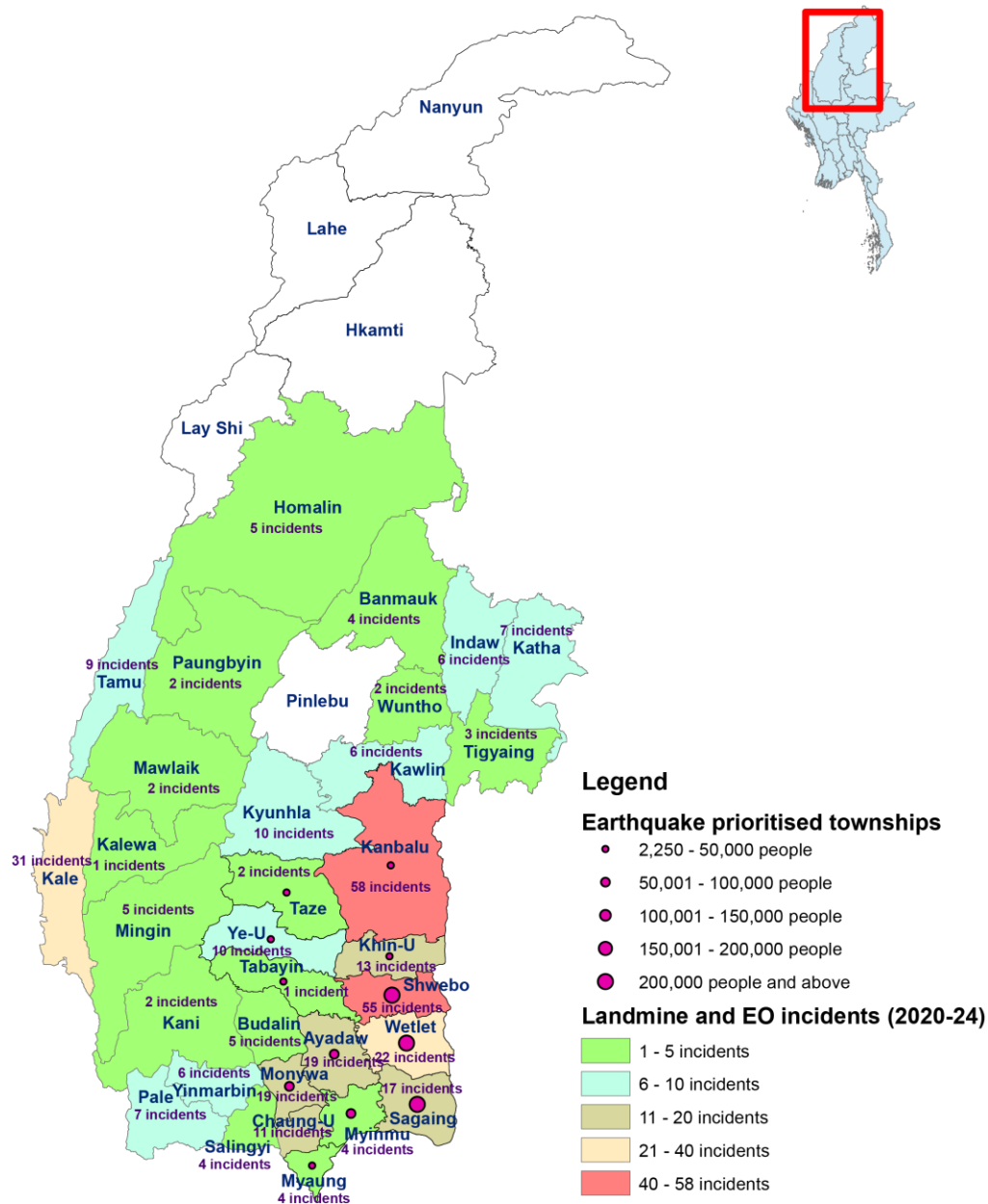


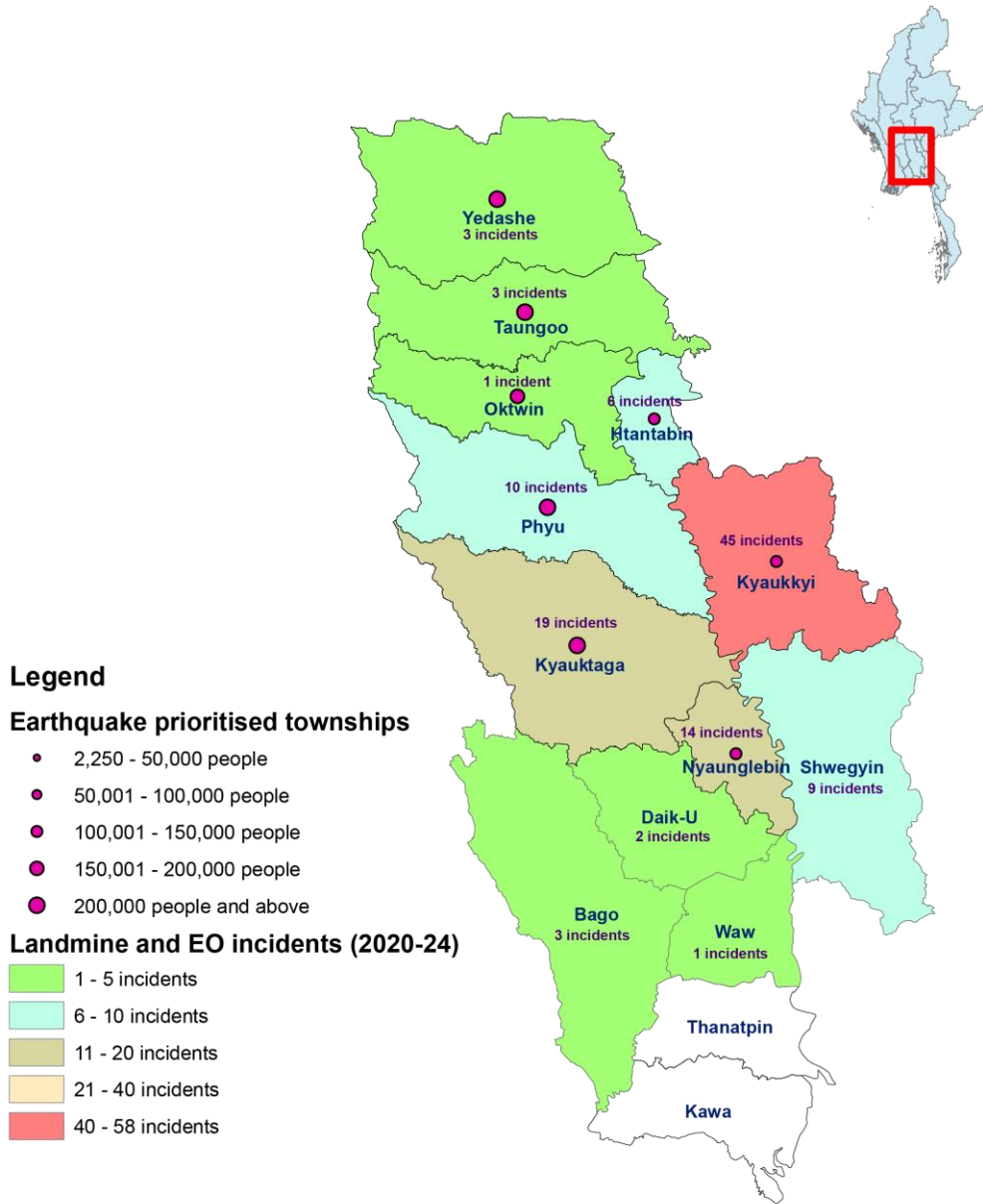
# Incidents affected Townships (2020-24) and Earthquake affected population (Sagaing Region)



SR	Township	EQ_Affected	Incidents
Sagaing	Kanbalu	27,814	58
Sagaing	Shwebo	276,494	55
Sagaing	Wetlet	215,276	22
Sagaing	Monywa	88,851	19
Sagaing	Sagaing	335,768	17
Sagaing	Khin-U	26,135	13
Sagaing	Ye-U	12,769	10
Sagaing	Ayadaw	16,976	6
Sagaing	Myinmu	54,617	4
Sagaing	Myaung	10,117	4
Sagaing	Taze	11,566	2
Sagaing	Tabayin	5,064	1

- High EO incident areas:
  - Kanbalu: 58 incidents – *highest in the country.*
  - Shwebo: 55 incidents
  - Wetlet: 22 incidents
  - Monywa: 19 incidents
- High earthquake-affected population:
  - Sagaing: 335,768
  - Shwebo: 276,494
  - Wetlet: 215,276

# Incidents affected Townships (2020-24) and Earthquake affected population (Bago East)

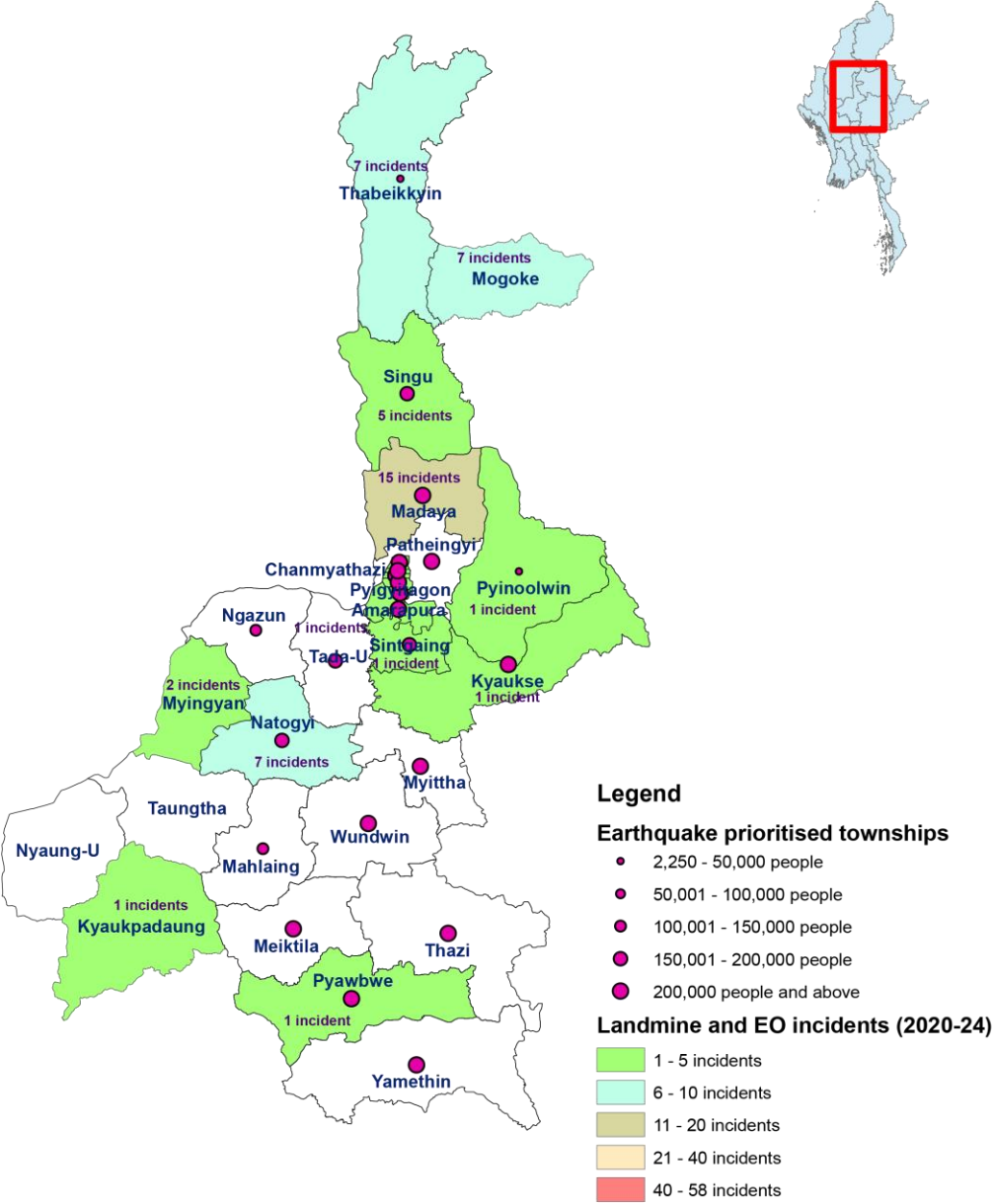


SR	Township	EQ_Affected	Incidents
Bago (East)	Kyaukkyi	101,559	45
Bago (East)	Kyauktaga	252,765	19
Bago (East)	Nyaunglebin	137,039	14
Bago (East)	Phyu	260,835	10
Bago (East)	Htantabin	118,532	6
Bago (East)	Taungoo	267,737	3
Bago (East)	Yedashe	216,071	3
Bago (East)	Oktwin	161,641	1

- **Significant EO incidents:**
  - **Kyaukkyi:** 45 incidents
  - **Kyauktaga:** 19 incidents
- **High earthquake-affected:**
  - **Taungoo, Kyauktaga, and Phyu** have >250,000 affected



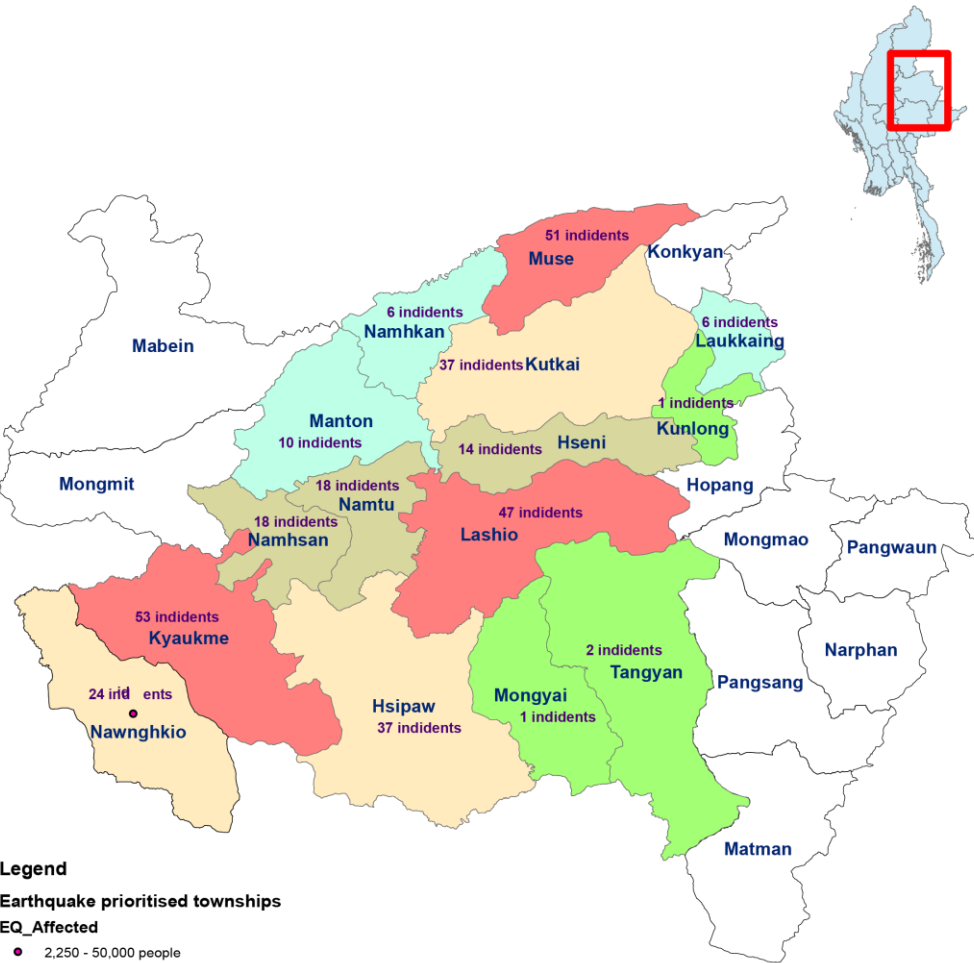
Incidents affected Townships (2020-24) and Earthquake affected population (Mandalay Region)



SR	Township	EQ_Affected	Incidents
Mandalay	Madaya	277,436	15
Mandalay	Thabeikkyin	17,318	7
Mandalay	Natogyi	154,615	7
Mandalay	Chanayethaza	217,011	5
Mandalay	Singu	170,499	5
Mandalay	Mahaaungmya	263,774	3
Mandalay	Chanmyathazi	310,095	3
Mandalay	Pyigyitagon	257,646	3
Mandalay	Aungmyaythaz	292,264	1
Mandalay	Amarapura	261,306	1
Mandalay	Pyinoolwin	9,787	1
Mandalay	Kyaukse	268,448	1
Mandalay	Sintgaing	163,895	1
Mandalay	Pyawbwe	277,926	1
Mandalay	Patheingyi	284,914	-
Mandalay	Myittha	209,586	-
Mandalay	Tada-U	154,477	-
Mandalay	Ngazun	104,940	-
Mandalay	Yamethin	281,064	-
Mandalay	Meiktila	321,164	-
Mandalay	Mahlaing	118,903	-
Mandalay	Thazi	211,376	-
Mandalay	Wundwin	256,151	-

- **Moderate EO incidents:**
  - **Madaya:** 15 incidents
  - **Nawngkhio** (from Shan North, near Mandalay): 24 incidents
- **Large urban areas like Aungmyaythazan, Chanayethazan** have low EO incidents despite large populations.

# Incidents affected Townships (2020-24) and Earthquake affected population (Shan North)



**Legend**

**Earthquake prioritised townships**

**EQ\_Affected**

- 2,250 - 50,000 people
- 50,001 - 100,000 people
- 100,001 - 150,000 people
- 150,001 - 200,000 people
- 200,000 people and above

**Landmine and EO incidents (2020-24)**

**Incident**

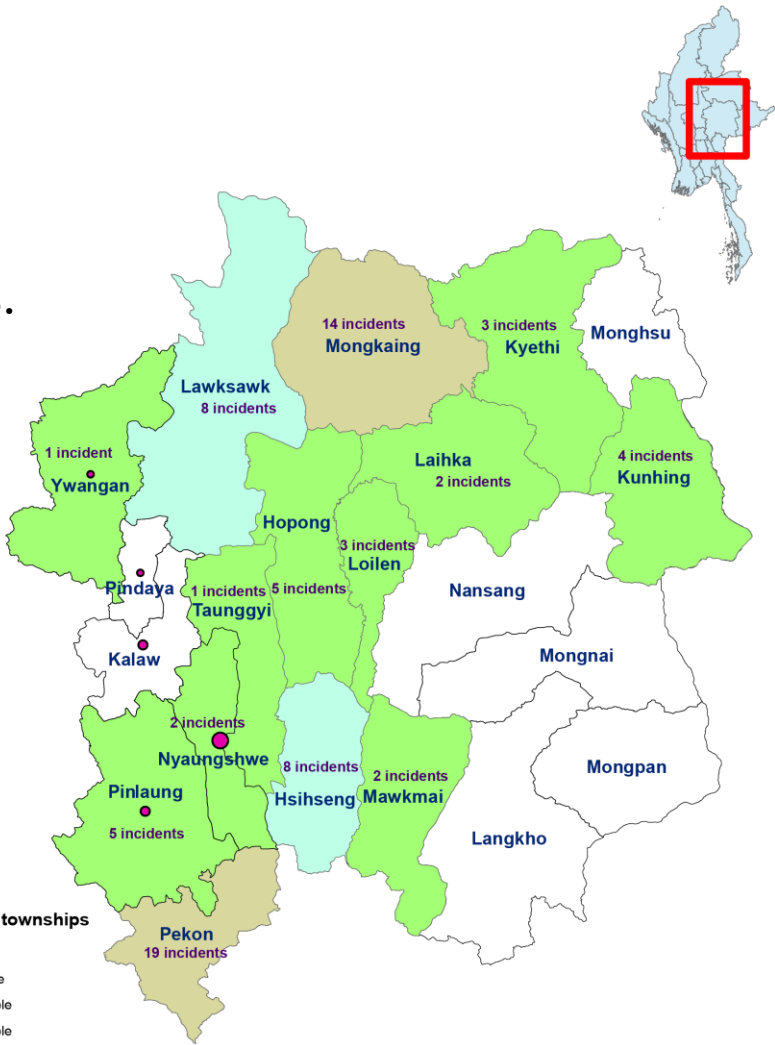
- 1 - 5 incidents
- 6 - 10 incidents
- 11 - 20 incidents
- 21 - 40 incidents
- 40 - 58 incidents

mmr\_polbnda\_adm3\_mimu\_250k

SR	Township	EQ_Affected	Incidents
Shan (North)	Nawngkhio	35,329	24
Shan (South)	Pinlaung	58,399	5
Shan (South)	Nyaungshwe	290,724	2
Shan (South)	Ywangan	2,250	1
Shan (South)	Kalaw	78,274	-
Shan (South)	Pindaya	31,647	-

- Shan (North): Nawngkhio stands out with **24 incidents**.
- Shan (South): Mostly low incidents; **Pinlaung** has 5.

# Incidents affected Townships (2020-24) and Earthquake affected population (Shan South)



**Legend**

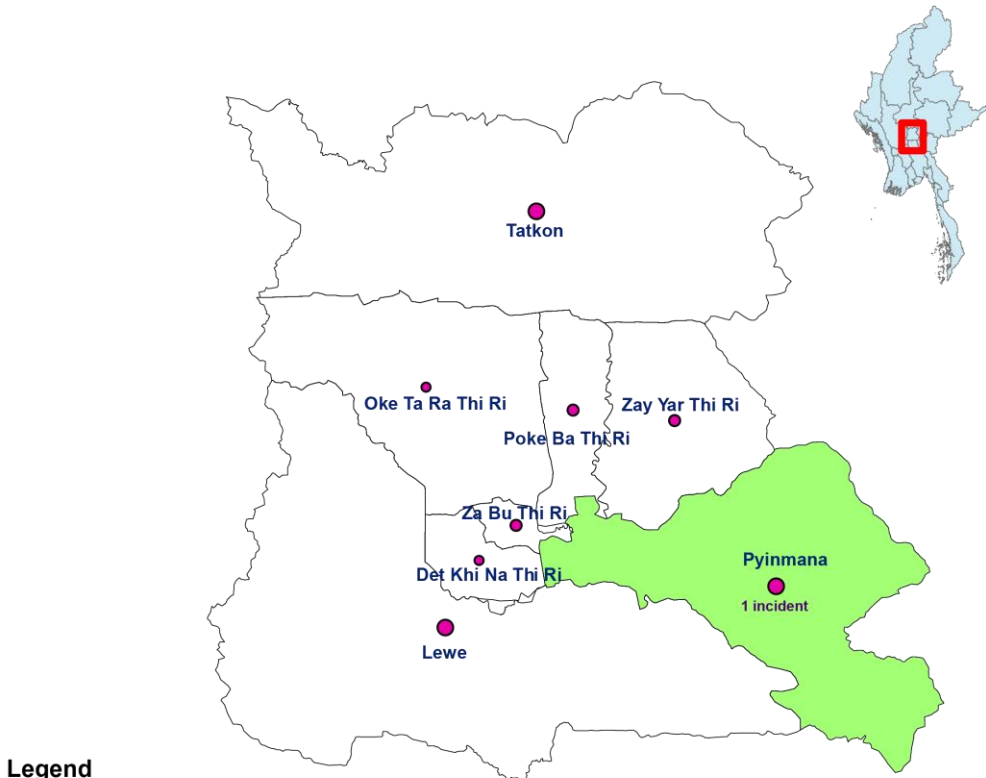
**Earthquake prioritised townships**

- 2,250 - 50,000 people
- 50,001 - 100,000 people
- 100,001 - 150,000 people
- 150,001 - 200,000 people
- 200,000 people and above

**Landmine and EO incidents (2020-24)**

- 1 - 5 incidents
- 6 - 10 incidents
- 11 - 20 incidents
- 21 - 40 incidents
- 40 - 58 incidents

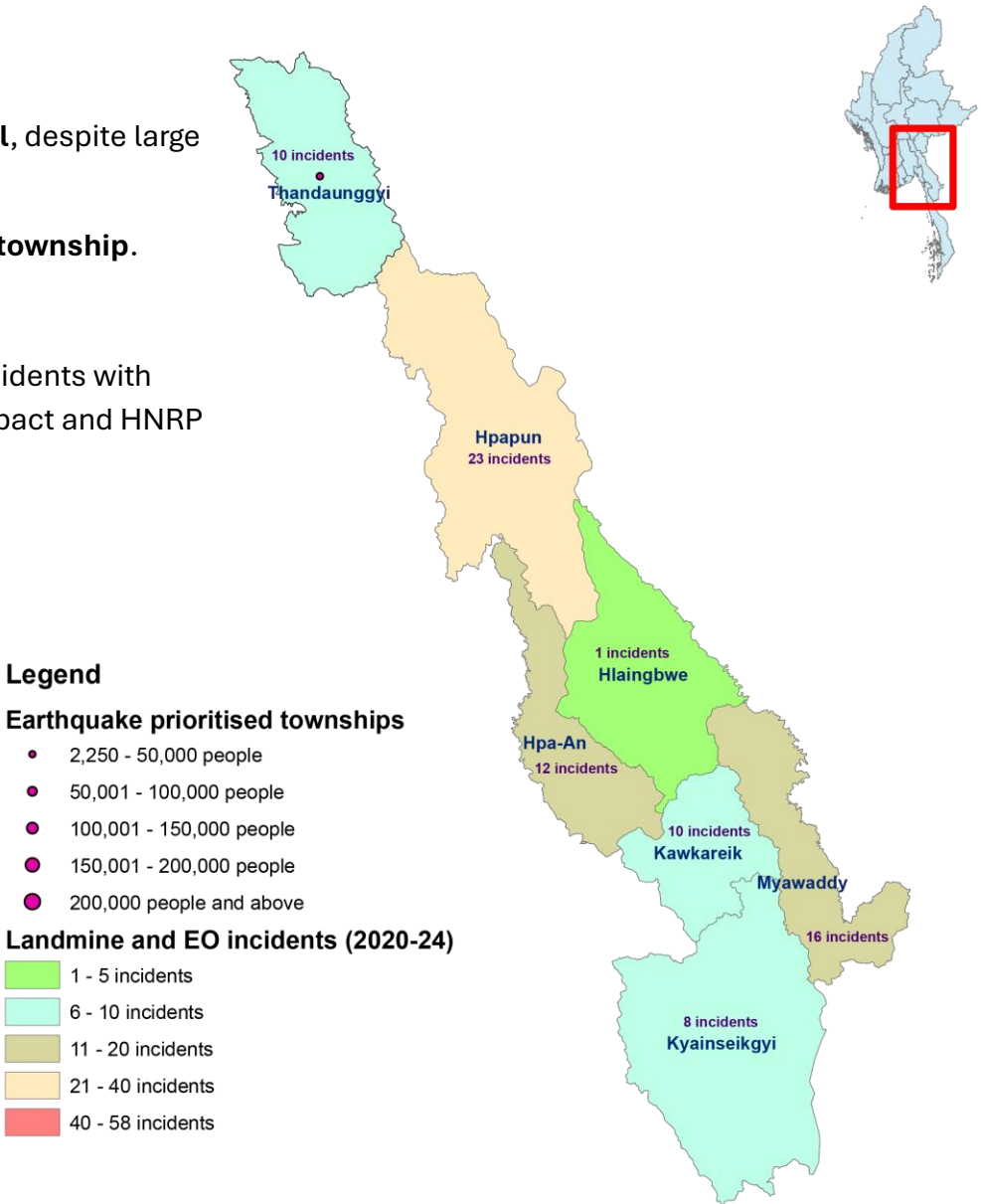
Incidents affected Townships (2020-24) and Earthquake affected population (Naypyitaw)



- Legend**
- Earthquake prioritised townships**
- 2,250 - 50,000 people
  - 50,001 - 100,000 people
  - 100,001 - 150,000 people
  - 150,001 - 200,000 people
  - 200,000 people and above
- Landmine and EO incidents (2020-24)**
- 1 - 5 incidents
  - 6 - 10 incidents
  - 11 - 20 incidents
  - 21 - 40 incidents
  - 40 - 58 incidents

SR	Township	EQ_Affected	Incidents
Kayin	Thandaunggyi	10,586	10
Nay Pyi Taw	Pyinmana	220,280	1
Nay Pyi Taw	Zay Yar Thi Ri	130,062	-
Nay Pyi Taw	Za Bu Thi Ri	130,884	-
Nay Pyi Taw	Tatkon	257,669	-
Nay Pyi Taw	Det Khi Na Thi	59,727	-
Nay Pyi Taw	Poke Ba Thi Ri	137,940	-
Nay Pyi Taw	Lewe	337,655	-
Nay Pyi Taw	Oke Ta Ra Thi F	96,120	-

Incidents affected Townships (2020-24) and Earthquake affected population (Kayin State)



- Legend**
- Earthquake prioritised townships**
- 2,250 - 50,000 people
  - 50,001 - 100,000 people
  - 100,001 - 150,000 people
  - 150,001 - 200,000 people
  - 200,000 people and above
- Landmine and EO incidents (2020-24)**
- 1 - 5 incidents
  - 6 - 10 incidents
  - 11 - 20 incidents
  - 21 - 40 incidents
  - 40 - 58 incidents

## Top 10 Townships with Highest EO Incidents (2020–2024)

Township	Region	EO Incidents	Earthquake Affected Population	HNRP Target
Kanbalu	Sagaing	58	27814	21345
Shwebo	Sagaing	55	276494	45750
Kyaukkyi	Bago (East)	45	101559	60656
Nawnghkio	Shan (North)	24	35329	15062
Wetlet	Sagaing	22	215276	34487
Monywa	Sagaing	19	88851	62526
Kyauktaga	Bago (East)	19	252765	13660
Sagaing	Sagaing	17	335768	12263
Madaya	Mandalay	15	277436	8363
Nyaunglebin	Bago (East)	14	137039	15175

Out of the 58 EQ-prioritized townships, 18 (31%) reported no landmine or explosive ordnance (EO) incidents in the past five years and are therefore considered free from contamination. An additional 17 townships (29%) recorded only 1 to 3 incidents during the same period, indicating a low level of contamination. Notably, 70% of all EO incidents reported in the past five years occurred in top 10 townships with highest EO incidents. These high-burden townships should be prioritized for Mine Action activities.