



ONE ASEAN
ONE RESPONSE

WEEKLY DISASTER UPDATE

Week 16
14 – 20 April 2025



The AHA Centre, GRAHA BNPB 13th floor,
Jl. Raya Pramuka Kav. 38, East Jakarta 13120 Indonesia

SOURCES

ASEAN Disaster Monitoring & Response System (DMRS);
ASEAN Specialised Meteorological Centre (ASMC); Joint
Typhoon Warning Centre (JTWC);

Indonesia: BNPB, BMKG, PVMBG;
Malaysia: NADMA;
Myanmar: DDM, DMH;
Philippines: PHIVOLCS;
Thailand: DDPM, TMD;
Viet Nam: VDDMA;
Various news agencies.

DISCLAIMER

The AHA Centre was established in November 2011 by the
Association of Southeast Asian Nations (ASEAN) Member
States to facilitate cooperation and coordination among
Member States, relevant agencies of the United Nations
and international organisations in disaster management and
emergency response.

This update consists of significant natural disaster events
that occurred in ASEAN Member States – Brunei
Darussalam, Cambodia, Indonesia, Lao PDR, Malaysia,
Myanmar, Philippines, Singapore, Thailand, and Viet Nam.
The disasters recorded include Drought, Flood, Earthquake,
Tsunami, Volcano, Wind, Landslide, and Storm.

The use of boundaries, geographic names, related
information, and potential considerations for response are
for references, not warranted to be error-free or implying
official endorsement from ASEAN Member States.

© 2025 AHA Centre.

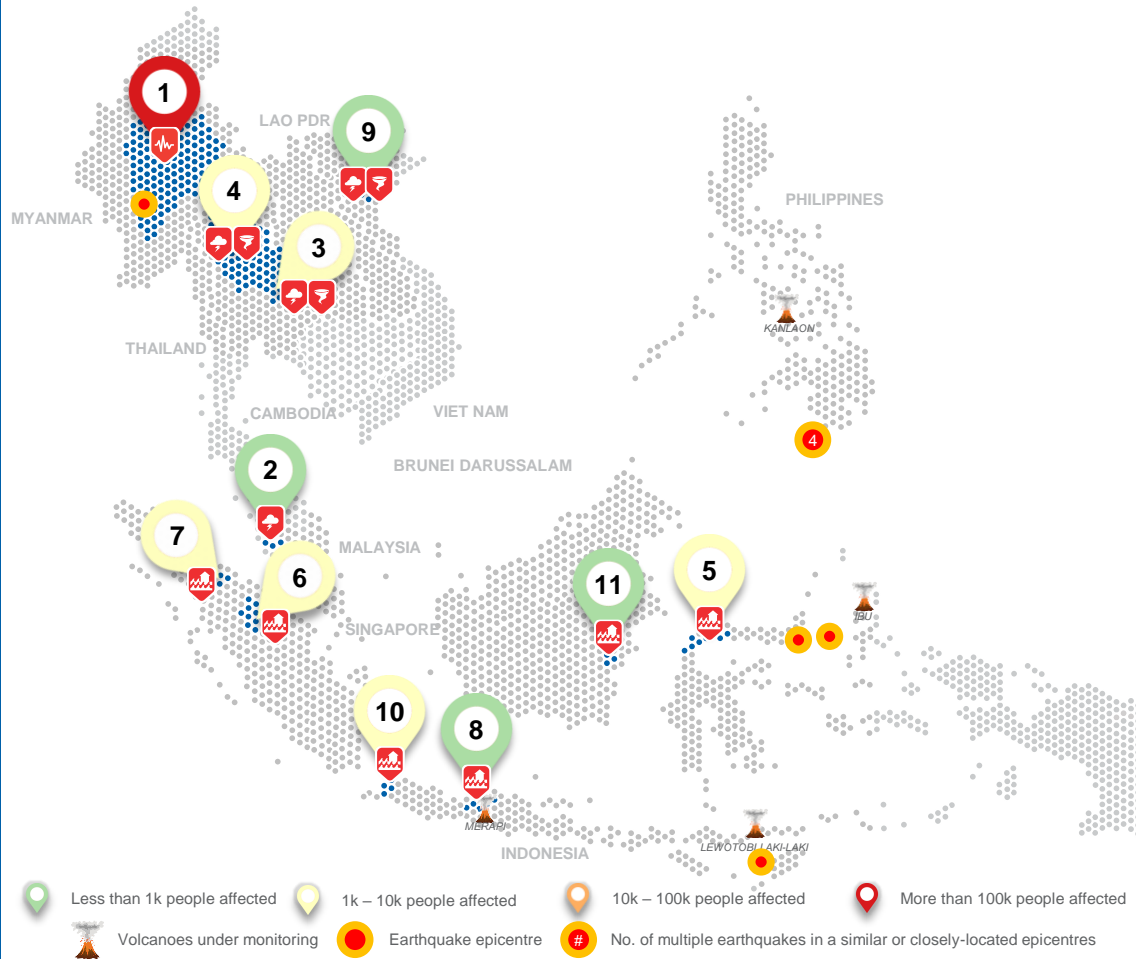
All rights reserved.

For inquiries, comments, and/or suggestions,
you may reach us through dma@ahacentre.org



You are receiving this email because you are
registered in our distribution list.

SCAN TO SUBSCRIBE



REGIONAL TALLY



Note: Estimations are based on data reported/confirmed by National
Disaster Management Organisations of each respective ASEAN
Member State and other verified sources

*Including impacts from M7.7 Mandalay Earthquake in Myanmar from Week 13

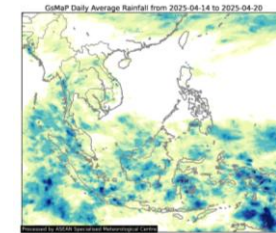
REGIONAL SUMMARY:

In the sixteenth week of 2025, the ASEAN region faced a series of 26 disasters, including floods, landslides, storms, and wind-related incidents that affected Indonesia, Malaysia, Thailand, and Viet Nam. According to Indonesia's *Badan Nasional Penanggulangan Bencana* (BNPB), significant impacts were reported in Central Sulawesi, Riau, North Sumatra, Central Java, Banten, and East Kalimantan. In Malaysia, *Agensi Pengurusan Bencana Negara* (NADMA) reported storms in Perak. In Thailand, the Department of Disaster Prevention and Mitigation (DDPM) reported storms and strong winds in several provinces in the Northern, Northeastern, and Central Regions. The Viet Nam Disaster and Dyke Management Authority (VDDMA) reported impacts of storms and strong winds in Than Hoa. In addition, the Department of Disaster Management (DDM) provided updates on the impacts of the M7.7 Mandalay Earthquake in Myanmar, as data collection and validation efforts continued.

HIGHLIGHT:

In Thailand, the DDPM reported numerous severe local storms accompanied by strong winds that brought significant impacts in the Northern, Northeastern, and Central regions. These events have resulted in three injuries and affected 8.2K people over the past week. Additionally, more than 1.7K houses have been damaged. Authorities have swiftly mobilised assistance for the affected families and are continuously monitoring the situation, conducting assessments, and providing immediate relief in the impacted areas.

HYDRO-METEO-CLIMATOLOGICAL:



For the past week, data from the ASEAN Specialised Meteorological Centre (ASMC) indicated medium to high 7-day average rainfall across the Maritime Continent, which includes Brunei Darussalam, Cambodia, Indonesia, central and southern Lao PDR, Malaysia, northern and southern Myanmar, southern Philippines, Singapore, Thailand, and central Viet Nam. As of this report, Tropical Cyclone - Thirtyone is being monitored in the South Pacific Ocean. According to BMKG, this tropical disturbance has no direct impact to the weather condition in the region.

GEOPHYSICAL:

Eight (8) significant earthquakes ($M \geq 5.0$) were recorded by Indonesia's *Badan Meteorologi, Klimatologi, dan Geofisika* (BMKG), the Department of Meteorology and Hydrology (DMH) of Myanmar, the Philippine Institute of Volcanology and Seismology (PHIVOLCS), and the Thailand Meteorological Department (TMD). Mount Ibu (alert level III), Dukono (alert level II), Lewotobi Laki-laki (alert level III), Semeru (alert level II), and Marapi (alert level II) in Indonesia, and Kanlaon (alert level 3), Taal (alert level 1), and Mayon (alert level 1) volcanoes in the Philippines reported recent volcanic activity according to *Pusat Vulkanologi dan Mitigasi Bencana Geologi* (PVMBG) and PHIVOLCS.

OUTLOOK:

According to the ASEAN Specialised Meteorological Centre (ASMC), for the coming week, wetter conditions are predicted over the southeastern Maritime Continent. Warmer than usual temperature is predicted over parts of the northeastern Maritime Continent. There is a small increase in chance for extreme warm temperature over the Philippines. La Niña conditions are likely transitioning to neutral. La Niña conditions tend to have a moderating effect on temperatures at this time of the year in Southeast Asia, even when transitioning to neutral.