



ONE ASEAN
ONE RESPONSE

SITUATION UPDATE

M7.7 EARTHQUAKE MANDALAY EARTHQUAKE

Monday, 14 April 2025, 2000 HRS (UTC+7)

No. **9**

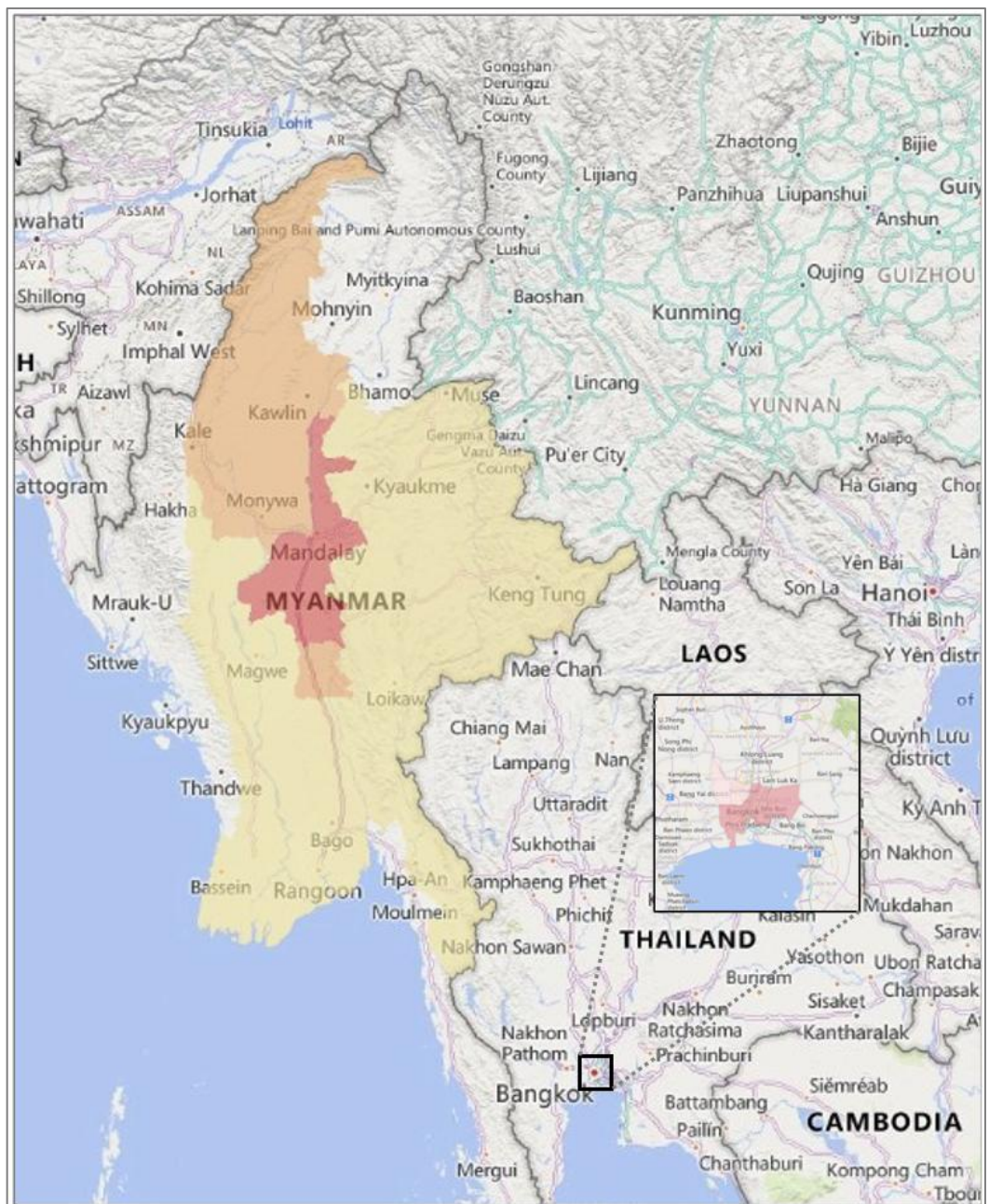
This Situation Update is provided by the AHA Centre for use of the ASEAN Member States and relevant stakeholders. The information presented is collected from various sources, including but not limited to ASEAN Member States' Government Agencies, UN, IFRC, NGOs, Humanitarian and Dialogue Partners, and News Organisations.

M7.7 Mandalay Earthquake

Disclosure(s): Figures are the updates from DDM Myanmar and DDPM Thailand Reports as of 14 April 2025



Based on reports from DDM Myanmar and DDPM Thailand as of 14 April 2025 at 1800 hrs UTC+7. Data collection and validation is still ongoing.



SITUATION UPDATE

1. SUMMARY

Myanmar is currently transitioning into early recovery phase in the aftermath of the M7.7 Mandalay Earthquake that struck on 28 March 2025. Based on the ASEAN Disaster Monitoring and Response System (DMRS) data as of 12 April 2025, in Myanmar, 41.7 million estimated population consisting of 9.06 million households were exposed to the effects of the earthquake. Of this population, an estimated 10.3 million are vulnerable, of which 25% are children, 68% are adults, and 7% are elderly. Additionally, an estimated 437 hospitals and 1,437 schools were also exposed to ground-shaking generated by the earthquake.

Access to water, usual food sources, health, and education, among others, remain a major problem due to the extensive damage to transportation infrastructure, communication lines, and public facilities such as hospitals, schools, and religious sites. Search and Rescue operations has now reached Level 5. Exposure of displaced communities to the combination of extreme heat and precipitation poses significant health risks. Furthermore, forecast rainfall in the coming days threaten to worsen living conditions in temporary shelters which are vulnerable to severe weather.

Several aftershocks have since been reported. The USGS have recorded at least 36 magnitude 3 or higher aftershocks, which are strong enough to be felt nearby, and at least 4 magnitude 5 or higher aftershocks, which are large enough to do damage. The Department of Meteorology and Hydrology (DMH) of Myanmar reports a magnitude 5.5 earthquake on 13 April 2025 at 0854 hrs MST. The USGS locates its epicentre at 21.1538 N and 96.0055 E, about 34 km north-northeast of Meiktila, Myanmar with a depth of 7.7 km. The USGS Pager Report ([Annex 1](#)) for this earthquake estimates at most Intensity V (MMI) in Meiktila which translates to moderate perceived shaking.

In Thailand, the National Disaster Prevention and Mitigation Command (NDPMC) has assessed the situation and noted that it has improved as essential public utilities, transportation routes, and people's livelihoods have returned to normal. However, the search and recovery operations from the collapsed building in Bangkok continues.

Preparedness and Response

As of 14 April 2025, the AHA Centre maintains its EOC alert level at **RED** – Day 18.

The AHA Centre maintains close coordination with the Department of Disaster Management (DDM) of Myanmar through the In-Country Liaison Team (ICLT), as well as with supporting ASEAN Member States and partners, to ensure a well-coordinated and effective disaster response.

The AHA Centre continues to facilitate the mobilisation of relief items to Myanmar. On 12 April 2025, 500 personal hygiene kits and 92 tarpaulins from the DELSA satellite warehouse in Camp Aguinaldo, Quezon City, have been received by DDM Myanmar in Nay Pyi Taw. On 13 April 2025, two (2) C-130 aircraft of the Armed Forces of the Philippines carrying 10 MT of ASEAN relief items from DELSA satellite warehouse in Camp Aguinaldo, Quezon City, and one (1) flight of Myanmar Airways International carrying 16 MT of ASEAN relief items arrived in Yangon.

To date, the AHA Centre has deployed twelve (12) flights carrying ASEAN relief items. Eight (8) flights carried relief items from the Disaster Emergency Logistics System for ASEAN (DELSA) regional warehouse in Subang, Malaysia, three (3) flight carried relief items from DELSA satellite warehouse in Camp Aguinaldo in Quezon City, Philippines, while one (1) flight carried relief items contributed by the Singapore Red Cross Society



and Mercy Relief from Singapore. The AHA Centre will continue coordinating with the DDM Myanmar and partners to prepare for further mobilisation of ASEAN relief items to support the affected communities.

2. ASSESSMENT OF IMPACT AND HUMANITARIAN NEEDS

Impacts in Myanmar – as of 14 April 2025 at 1800 hrs UTC+6.5

- a. DDM has recorded 3,655 deaths, 4,824 injuries and 129 missing. According to DDM's latest report, 198,623 people are currently displaced due to the earthquake. Of these, 41,733 people are staying in 145 temporary shelters.
- b. To date, the reported damages include:
 - 52,671 Houses (13,194 totally damaged and 39,477 partially damaged)
 - 38 Railways
 - 77 Bridges
 - 405 Roads
 - 198 Locations and 81 bridges along Yangon-Mandalay Express Way
 - 5,488 Office buildings and others
 - 2,661 Schools
 - 5,114 Religious Buildings
 - 6,033 Pagodas
 - 640 Hospitals/clinics
 - 2,919,778.05 million MMK worth of damage and losses

Data collection and validation is still ongoing.

- c. The DDM Myanmar has identified **EMTs and field hospitals as critical needs** in the current response phase. Other identified needs are listed as follows:
 - Food and water
 - Kitchen sets
 - Hygiene kits
 - Tarpaulins
 - Solar lamps
 - Family Tents
 - Jerry Cans
 - Water Filters
 - Construction Materials (Zinc, Nail, Cement, etc)
 - Fuel

Impacts in Thailand – as of 14 April 2025 at 0600 hrs UTC+7

- a. The Thailand Department of Disaster Prevention and Mitigation (DDPM) has reported 44 deaths and 37 injuries.
- b. According to the DDPM, damages on infrastructure are the following:
 - 1,389 houses
 - 168 hospitals
 - 129 schools
 - 91 temples



- 83 government facilities
 - 39 buildings
- c. Search and recovery operations is still ongoing at the collapsed building site in Bangkok. The National Disaster Prevention and Mitigation Command maintains Level 2 disaster status, classified as a medium-scale disaster.

Anticipated Risks

a. Aftershocks

According to the US Geological Survey (USGS), the likelihood of significant aftershocks remains high, with probabilities of 37% for magnitude 5+ and 97% for magnitude 4+ within the next week (**Annex 2**). The Department of Meteorology and Hydrology (DMH) of Myanmar has also reported ongoing seismic activity, emphasizing the need for continued vigilance and preparedness. These aftershocks are contributing to the challenges faced by the affected communities as they transition into the recovery phase.

b. Liquefaction and Landslide

Exposure to liquefaction remains extensive for both number of people exposed and spatial extent along the Sagaing Fault. Landslides hazard area exposure also remains extensive with more than 100,000 km². Population exposure is significant with an estimate of more than 5,000 people living in areas exposed to landslide hazards. Precipitation in landslide hazard areas increases the possibility of rain-induced landslide events. In the latest advisory of DMH concerning the rainfall outlook for the next three days, the DMH warns of possibility of rainfall associated hazards, including landslides.

Ground movement from liquefaction and landslides could intensify the effects of the main earthquake. Additionally, the structural integrity of infrastructure in the affected areas may already be significantly compromised. Transportation networks and facilities are at high risk of severe damage, which could impede relief efforts.

c. Weather Advisory

Significant Rainfall: DMH Myanmar rainfall outlook released on 13 April 2025 at 1800 hrs MST, from 14 April until 17 April 2025 (**Annex 3**), indicates widespread rainfall, with heavy to very heavy rainfall in some places.

In the next 24 hours, rain or thundershower will be widespread in Yangon, Bago Regions and Kayah, (Southern and Eastern) Shan States; scattered in Nay Pyi Taw, Mandalay, Magway, Ayeyarwady, Taninthayi Regions and Kayin, Mon, Northern Shan States; and isolated in the remaining Regions and States. Degree of certainty is 80%.

DMH cautions that cumulonimbus clouds are developing in Nay Pyi Taw, Yangon, Mandalay, Bago, Magway, Ayeyarwady, Taninthayi Regions and Kayah, Kayin, Chin, Mon, (Southern and Eastern) Shan States. These areas may experience strong winds accompanied with rain, thunder, lightning and hail may occur and therefore it is recommended to be aware in advance these phenomena.



For the next two days, rain or thundershower will be scattered to widespread in Nay Pyi Taw, Yangon, Mandalay, Bago, Magway, Sagaing, Ayeyarwady, Taninthayi Regions and Kayah, Kayin, Chin, Mon, Rakhine, and Shan States.

- d. **Extreme Heat.** Temperatures which may reach up to 40°C create severe conditions for both affected communities and responders. Extreme heat poses serious health risks for the affected communities and responders, and logistical challenges for ongoing humanitarian operations

Temporary shelters constructed from unstable materials are highly susceptible to severe weather conditions. Displaced communities residing in these shelters face exposure to both high temperatures and rainfall. This combination significantly increases the risk of disease outbreaks among the earthquake-affected population. The lack of sturdy infrastructure can lead to compromised living conditions, making it difficult to maintain hygiene and access clean water. Consequently, the health and well-being of these communities are at greater risk, necessitating urgent intervention to improve shelter quality and provide adequate healthcare services. Further, precipitation affects response efforts and exacerbates the living conditions of displaced people.

3. ACTIONS TAKEN AND RESOURCES MOBILISED

Response by Myanmar Authorities

- a. The Ministry of Health is planning to deploy local medical teams after international teams complete their assignments, while implementing measures to prevent infectious diseases.
- b. DDM Myanmar is coordinating with the Ministry of Foreign Affairs (MoFA) to support the demobilisation of international contingents in Myanmar.
- c. DDM Myanmar is collaborating closely with the Ministry of Health to operationalise international EMTs and field hospitals as the response phase continues.
- d. DDM Myanmar continues to lead data collection and validation in affected areas.

Response by the Government of Thailand

- a. The DDPM continues to closely monitor the situation, assessing both the impacts and the solutions for addressing the disasters caused by the earthquakes.
- b. In light of the recent situation, the Thai government has resolved to maintain its disaster management response at a medium scale (Level 2).
- c. The Thailand Meteorological Department closely monitors and releases advisories on earthquakes and aftershocks.

Response by the ASEAN Member States

- a. The **Indonesian** EMT continues to provide medical assistance to earthquake-affected communities until 21 April 2025.
- b. On 14 April, the Office of Civil Defense (OCD) reports that the **Philippines** Inter-Agency Humanitarian Contingent (PIAHC) to Myanmar had arrived home. Defense Secretary Gilberto Teodoro Jr., Health Secretary Teodoro Herbosa, OCD Administrator Ariel Nepomuceno, Armed Forces of the Philippines (AFP) Chief of Staff



Gen. Romeo Brawner, Commanding General of the Philippine Air Force (PAF) Lt. Gen. Arthur Cordura, and representatives from various agencies were present to honor the contingent. The OCD also quotes the PEMAT team lead who shared that their participation in the humanitarian mission is also a way of expressing gratitude to Myanmar for its support to the Philippines after Super Typhoon Yolanda (Haiyan) in 2013. Meanwhile, the Philippines' Department of Social Welfare and Development (DSWD) psychological first aid (PFA) team is providing immediate support to earthquake survivors in Myanmar.



PIAHC receives Hero's Welcome (Source: OCD)

- c. The **Singapore** Emergency Medical Team (SGEMT) continues with Operation Falconwing, providing medical services at the Bahtoo Stadium in Mandalay. On 11 April 2025, the SGEMT hosted the Emergency Medical Team Coordination Cell (EMTCC) Team Leaders Meeting attended by representatives from the EMTCC, Russia Emerson, Japan Disaster Relief, India Army Field Hospital, and Peace Winds from Japan.
- d. The joint medical team of the Royal **Thai** Air Force and the Royal Thai Army continues to provide medical care to the local population. Additionally, a team of Thai Army engineers is working on area restoration focusing on significant sites.

Response by Partners and other Humanitarian Actors

- a. Through the Japan-ASEAN Integration Fund (JAIF), the Government of **Japan** continues to support ASEAN-led efforts in responding to the immediate needs of communities affected by the earthquake.
- b. **HelpAge International** provided hygiene and NFI kits to 350 households, including older people and those with disabilities, in Pyinmana Township, Nay Pyi Taw. The kits included essentials like toothbrushes, toothpaste, soap, laundry detergent, drinking water, wet and dry tissues, and mosquito nets. Additionally, multi-purpose cash assistance was given to help meet basic needs such as medicine and medical care, benefiting a total of 1,750 family members.
- c. **Plan International Myanmar** provided psychosocial support to 84 children affected by the earthquake, including 45 girls, alongside distributing essential food, water, and non-food items to their families. Efforts to establish Child-Friendly Spaces (CFSs) are ongoing, with 8,841 individuals reached through life-saving interventions to date.
- d. **World Vision** has reached 72,217 people, including 11,515 girls, 9,697 boys, 29,084 women, and 21,092 men, through essential food assistance, multipurpose cash in collaboration with WFP, NFIs, water purification and distribution, mental health and psychosocial support, and child protection campaigns.



Response by the AHA Centre

- a. As of 14 April 2025, the AHA Centre maintains its EOC alert level to **RED** – Day 18.
- b. The AHA Centre continues to maintain close coordination with DDM Myanmar, as well as with assisting ASEAN Member States and partners to ensure a coordinated and effective disaster response.
- c. From 12 to 14 April 2025, four (4) flights of DELSA relief items, consisting of personal hygiene kits and tarpaulin sheets, arrived in Myanmar. The items were sourced from the DELSA warehouses in the Philippines and Malaysia and delivered by the Armed Forces of the Philippines (AFP) in coordination with the Office of Civil Defense (OCD), and Myanmar Airways International (MAI), respectively.



In collaboration with the OCD, ASEAN relief items from the DELSA satellite warehouse in Camp Aguinaldo, Philippines are loaded in two C-130 aircraft of the Armed Forces of the Philippines which have arrived in Myanmar on 13 April 2025.

- d. As of 14 April 2025, the total value of ASEAN relief items mobilised for the Mandalay Earthquake stands at USD 480,485.81.
- e. The two members of the AHA Centre ICLT have completed their mission and have demobilised from Myanmar on 13 April 2025.
- f. As of 14 April 2025, the relief efforts have received substantial contributions, with significant donations coming from Japan through JAIF, France, and the Swiss Agency for Development and Cooperation (SDC). In addition, the Singapore Red Cross and Mercy Relief have also supported the AHA Centre's coordinated regional response efforts.
- g. The AHA Centre continues to coordinate with partners such as Timor Leste, Australia, Mongolia, World Bank Group, Mercy Malaysia, and Monash University, to coordinate and pool humanitarian resources.

RECOMMENDATIONS AND PLAN OF ACTION

Recommendations

- a. International EMT may coordinate with Myanmar authorities to support the provision of medical care to communities affected by the earthquake. International organisations and partners are encouraged to reach out directly to DDM Myanmar.



- b. General public and humanitarian partners are advised to stay updated on the hazards and disaster impacts from official government sources through the DDM Myanmar and DDPM Thailand.
- c. Partners and the general public are encouraged to closely monitor information on the aftershock hazards, weather, and current environmental conditions from official sources, such as DMH Myanmar and TMD Thailand.
- d. Response teams are advised to wear the prescribed protective gear to ensure safety, security, and protection from debris and potential health hazards.
- e. The general public and partners are advised to refer to official news from the DDM Myanmar.
- f. ASEAN Member States and humanitarian partners are advised to subscribe to the AHA Centre Situation Updates for official reports¹.

The AHA Centre's Plan

- a. Following the demobilisation of ASEAN-ERAT and ICLT from Myanmar, the AHA Centre EOC Alert Status will be lowered to **ORANGE** from 15 April 2025 onwards.
- b. The AHA Centre remains dedicated to close coordination with DDM Myanmar, assisting AMS and partners to ensure effective disaster response efforts.
- c. Preparations are underway for the next shipment of ASEAN relief items. The succeeding batch of relief items will be mobilised with support from the UNHRD.
- d. The AHA Centre will release Situation Update No. 10 on 17 April 2025.
- e. The AHA Centre continues to coordinate with partners to identify additional resources for future deployments. Situation Reports will be produced regularly to ensure transparency and effective communication. Furthermore, impact information will be continuously updated in the ASEAN Disaster Information Network (ADINet).

Prepared by:

The AHA Centre - Emergency Operations Centre (EOC)

¹ AHA Centre Situation Updates: <https://ahacentre.org/situation-updates/>



ABOUT THE AHA CENTRE

The AHA Centre - ASEAN Coordinating Centre for Humanitarian Assistance on disaster management - is an inter-governmental organisation established by 10 ASEAN Member States – Brunei Darussalam, Cambodia, Indonesia, Lao PDR, Malaysia, Myanmar, Philippines, Singapore, Thailand and Viet Nam - to facilitate the cooperation and coordination among ASEAN Member States and with the United Nations and international organisations for disaster management and emergency response in the region.

The ASEAN Coordinating Centre for Humanitarian Assistance on disaster management (AHA Centre), Graha BNPB 13th Floor, JL Raya Pramuka Kav 38, East Jakarta, 13210, Indonesia
Phone: +62-21-210-12278 | www.ahacentre.org | email: info@ahacentre.org

Contact:

- 1) Abdul Aleem Siddiq, Assistant Director for Strategic Planning, Monitoring, and Partnership
aleem.siddiq@ahacentre.org
- 2) Sadhu Zukhruf Janottama, Disaster Monitoring and Analysis Officer,
sadhu.janottama@ahacentre.org
- 3) Jasmine Tabije Alviar, Disaster Monitoring and Analysis Officer
jasmine.alviar@ahacentre.org
- 4) Gerardy Granada, Research and Planning Officer
gerardy.granada@ahacentre.org
- 5) Panji Sudoyo, Senior Project Officer – SICAP
panji.sudoyo@ahacentre.org
- 6) Excel Botigan, Project Officer – ASCEND
excel.botigan@ahacentre.org
- 7) Ananda Prabu Dian, Project Officer – ASEAN-PRIME
ananda.prabudian@ahacentre.org
- 8) Nadila Nurul Fitri, Procurement Assistant
nadila.fitri@ahacentre.org



ANNEXES

Annex 1. USGS PAGER Report for the M5.5 Earthquake on 13 April 2025



Earthquake Shaking **Yellow Alert**



USAID
FROM THE AMERICAN PEOPLE



PAGER

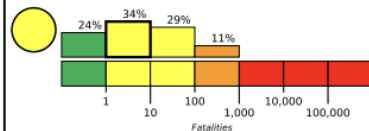
Version 3

M 5.5, 34 km NNE of Meiktila, Burma (Myanmar)

Origin Time: 2025-04-13 02:24:57 UTC (Sun 08:54:57 local)
Location: 21.1538° N 96.0055° E Depth: 7.7 km

Created: 43 minutes, 34 seconds after earthquake

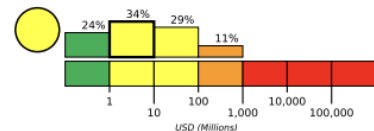
Estimated Fatalities



Yellow alert for shaking-related fatalities and economic losses. Some casualties and damage are possible and the impact should be relatively localized. Past yellow alerts have required a local or regional level response.

Estimated economic losses are less than 1% of GDP of Burma.

Estimated Economic Losses

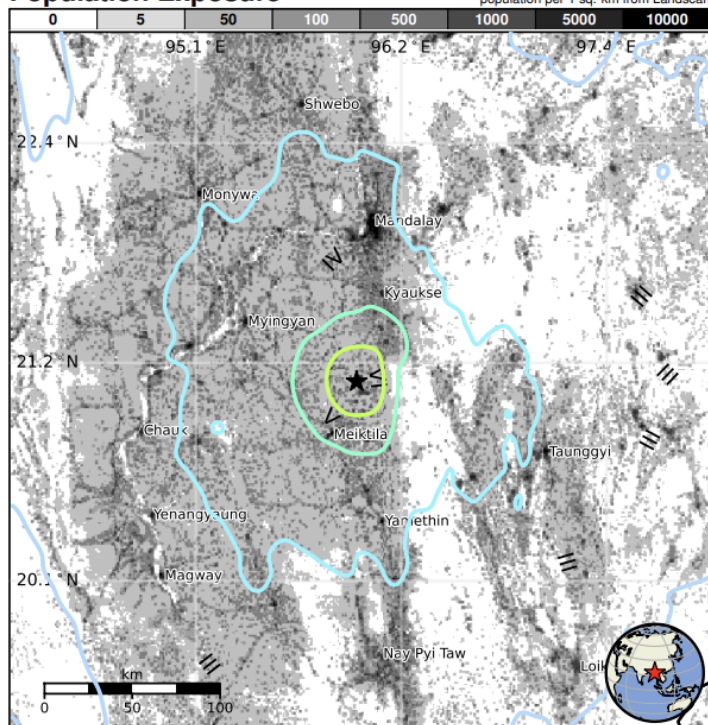


Estimated Population Exposed to Earthquake Shaking

ESTIMATED POPULATION EXPOSURE (k=x1000)	—*	10,282k*	7,892k	782k	249k	27k	0	0	0
ESTIMATED MODIFIED MERCALLI INTENSITY	I	II-III	IV	V	VI	VII	VIII	IX	X+
PERCEIVED SHAKING	Not felt	Weak	Light	Moderate	Strong	Very Strong	Severe	Violent	Extreme
POTENTIAL DAMAGE	Resistant Structures	None	None	None	V. Light	Light	Moderate	Mod./Heavy	Heavy
	Vulnerable Structures	None	None	None	Light	Moderate	Mod./Heavy	Heavy	V. Heavy

*Estimated exposure only includes population within the map area.

Population Exposure



Structures

Overall, the population in this region resides in structures that are vulnerable to earthquake shaking, though resistant structures exist. The predominant vulnerable building types are informal (metal, timber, GI etc.) and unreinforced brick masonry construction.

Historical Earthquakes

Date (UTC)	Dist. (km)	Mag.	Max MMI(#)	Shaking Deaths
1977-05-12	323	5.9	VII(4k)	0
1992-04-23	322	6.1	VIII(4k)	4
1995-07-11	334	6.8	IX(3k)	11

Selected City Exposure

from GeoNames.org

MMI	City	Population
V	Meiktila	177k
IV	Kyaukse	50k
IV	Myingyan	142k
IV	Mandalay	1,208k
IV	Yamethin	60k
IV	Sagaing	79k
III	Monywa	182k
III	Taunggyi	160k
III	Magway	97k
III	Loikaw	17k
III	Nay Pyi Taw	925k

bold cities appear on map.

(k=x1000)

PAGER content is automatically generated, and only considers losses due to structural damage. Limitations of input data, shaking estimates, and loss models may add uncertainty.
<https://earthquake.usgs.gov/earthquakes/eventpage/us6000q5ps#pager>

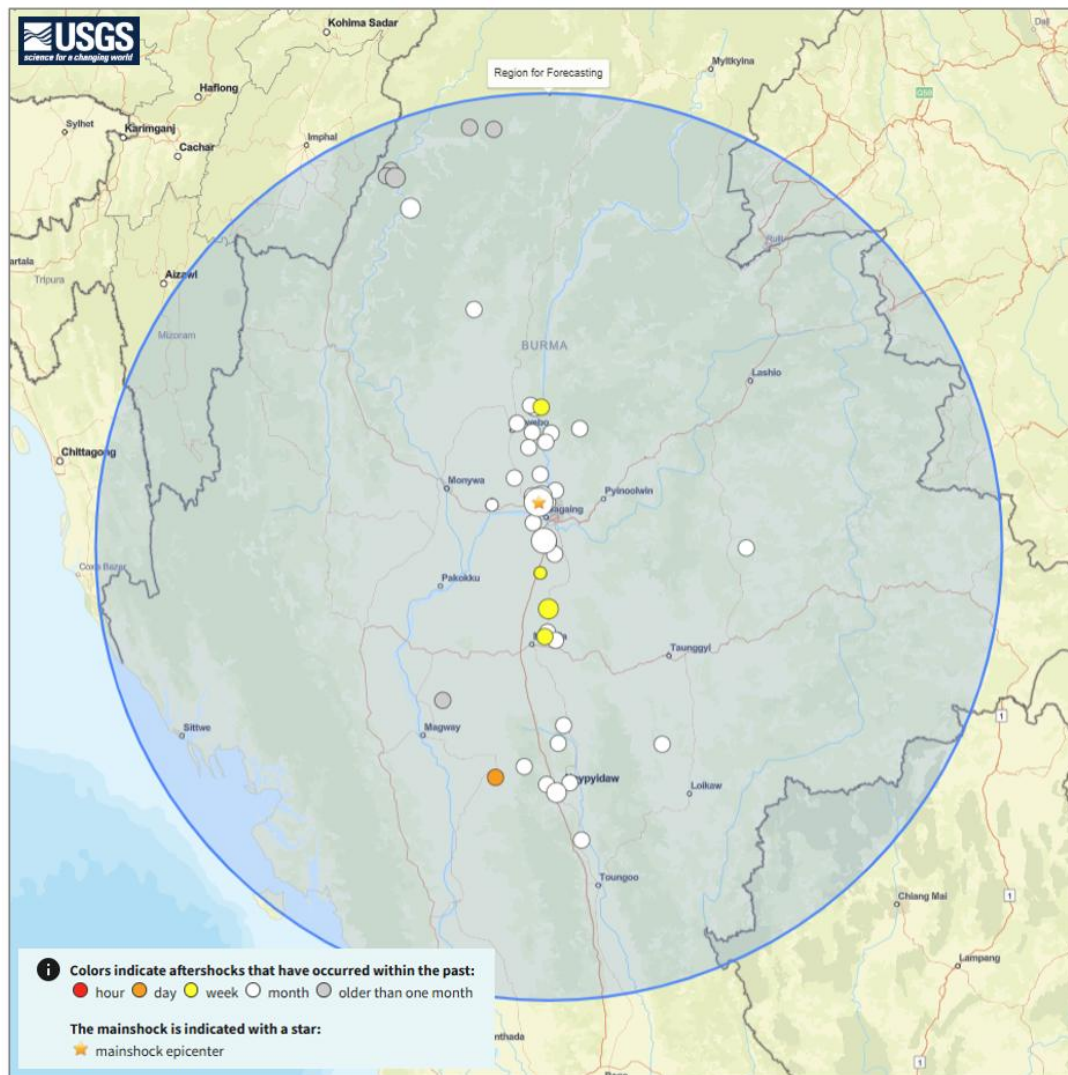
Event ID: us6000q5ps



SITUATION UPDATE

Annex 2. USGS Aftershock Forecast

Aftershock locations as of 14 April 2025:



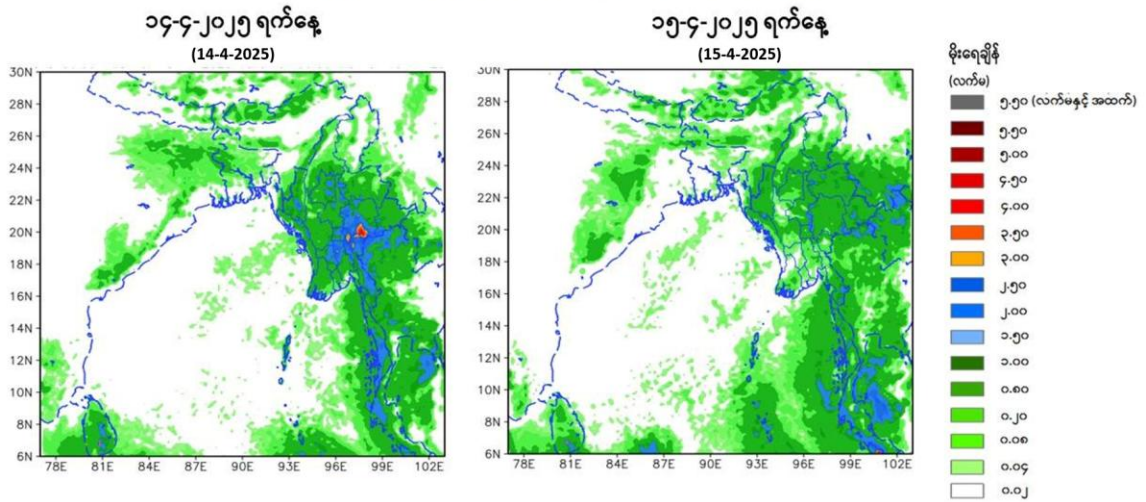
Expected number of aftershocks (latest update on 12 April 2025):

Magnitude (M) of aftershock	within 1 Day	within 1 Week
M 7 or higher	1 in 2,000 chance of 1 or more	1 in 200 chance of 1 or more
M 6 or higher	1 in 100 chance of 1 or more	5% chance of 1 or more
M 5 or higher	7% chance of 1 or more	37% chance of 1 or more
M 4 or higher	50% chance of 1 or more	Expect about 5
M 3 or higher	Expect about 7	Expect about 49



Annex 3. DMH Myanmar Weather Advisory

ယနေ့ညနေမှ ၁၇-၄-၂၀၂၅ ရက်နေ့အတွင်း မိုးလေဝသ သင်္ချာပုံစံပြုမော်ဒယ်မှ
ခန့်မှန်းထားသည့် မိုးရွာသွန်းမှုအခြေအနေ ခန့်မှန်းချက်ပြပုံ



ယနေ့ညနေမှ ၁၇-၄-၂၀၂၅ ရက်နေ့အတွင်း မိုးလေဝသ သင်္ချာပုံစံပြုမော်ဒယ်မှ
ခန့်မှန်းထားသည့် မိုးရွာသွန်းမှုအခြေအနေ ခန့်မှန်းချက်ပြပုံ

