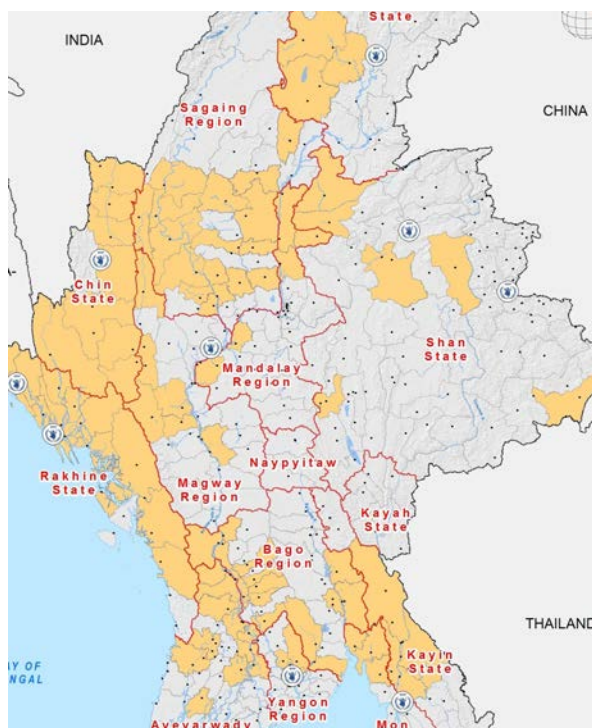




World Food Programme

Myanmar

Emergency Response to Floods



Flood affected areas of Myanmar

In numbers



1 million people affected

12 states and regions affected

435,000 people in need of food

US\$ 3 million per month additionally needed

213,000 people with **911** mt of food already assisted

Funding partners in Myanmar



Australia, Canada, Czech Republic, European Union, Germany, Italy, Japan, Japan Association for WFP, Luxembourg, Myanmar, New Zealand, Switzerland, United States, United Kingdom, UNCERF and Private Sector.

Food Security Sector



Situation Update

- According to the Government as well as inter-agency and WFP individual needs assessments, more than 1 million people have now been affected by severe floods and landslides in 12 states/regions of Myanmar: Ayeyarwady, Bago, Chin, Kachin, Kayin, Mandalay, Magway, Mon, Rakhine, Sagaing, Shan and Yangon.
- The Government, supported by the U.N., civil society organizations, NGOs and private sector and individuals has continued to lead the emergency response.
- The most urgent humanitarian needs are life-saving food, safe water, shelter, access to health care and adequate sanitation as well as protection services for the most vulnerable groups, including women, girls and the elderly.
- Following the Government's appeal for international assistance, announced on 4 August, several governments have bilaterally provided humanitarian aid to Myanmar.
- Floods have destroyed more than one million acres of farmland. Initial assessments in Rakhine indicate that floods and salt water have spoilt the rice harvest. Damage to crops and arable land will significantly undermine the agricultural production, affecting the market and further exacerbate the food security situation.

WFP Response

- WFP, in cooperation with other U.N. agencies and NGO partners has continued needs assessments across the country, including Ayeyarwady, informing the adequate planning and implementation of the floods emergency response.
- In just one week, WFP has managed to gain access to almost all of the flood affected areas and scaled up its emergency food assistance with a five-fold increase, already targeting 435,000 people across the country.
- Since the onset of the emergency response on 2 August, WFP has already distributed 911 mt of food to 213,000 people in Bago, Chin, Kachin, Kayin, Magway, Mon, Rakhine and Sagaing.

Food Assistance



- WFP floods response consists of food assistance with a one-month food basket (13.5 kg of rice, 1.8 kg of pulses, 0.9 lit of cooking oil and 150 gm of salt) and/or a one-week ration of High Energy Biscuits (three packs per day per person) for 435,000 flood affected people.
- In east Bago, food was provided to all the 12,941 flood affected people in Bago township. Distributions for 10,611 people in Moenyo township of west Bago started on 9 August and are on-going.
- WFP has finally gained access to one of the worst hit areas of Chin State, reaching 11,968 people in the townships of Hakha, Matupi, Tedim, Thantlang and Tonzang. The remaining townships of Falam, Kanpetlet, Mindat and Paletwa with the estimated 898 people in need of food assistance remain inaccessible.
- In Kachin, food was distributed to 9,100 people in Moegaung, the only flood affected township.
- Food assistance has now been extended to Kayin State, reaching 7,235 people in Hlaingbwe and Hpa An townships.
- In Magway, food assistance was provided to 28,796 people in Pwintphyu, Sayatoketayar and Yenangyaung townships.
- In Mon, WFP successfully completed distributions of to all 4,444 flood affected people in the townships of Biilin and Kyaikto.
- In Rakhine, 113,616 people received food assistance in the townships of Ann, Buthidaung, Gwa, Kyauktaw, Maungdaw, Minbya, Mrauk Oo, Ponnagyun, Rathedaung, Thandwe and Toungup.
- In Sagaing, WFP distributed food for 24,405 people in the townships of Kanbalu, Kaw Lin, Kalay, Kalaywa, Wetlet and Yey Oo. WFP is working to gain access to Ayartaw township.



Logistics

- WFP has established a platform for provision of logistics common services to other U.N. agencies and NGOs. WFP will coordinate with humanitarian partners to increase logistics response efficiency, including the use of air assets, rapid dissemination of operational information as well as mapping of access and infrastructure.
- On 10 August, the Government of Australia airlifted 1,000 urgently-needed family kits from the WFP-managed United Nations Humanitarian Response Depot (UNHRD) in Subang, Malaysia to the Yangon International Airport for flood victims.



Food Security Sector

- Upon an official request from the Government, FAO jointly with WFP and in coordination with the sector partners will conduct an assessment of impact of floods on livestock and agriculture in order develop an early recovery plan.

Partnerships

- On August 7, British Ambassador to Myanmar H.E. Andrew Patrick visited a WFP warehouse in Yangon stocked with High Energy Biscuits funded with the UK contribution for emergency preparedness and used for the flood response.
- WFP has seconded one staff to the recently activated Emergency Operation Centre (EOC) under the authority of the President. EOC, based in the capital Naw Pyi Taw, is to facilitate the coordination of the emergency response between the Government and humanitarian community.
- WFP is partnering with ACF, KMSS, Malteser, Save the Children, PACT, Terre des Hommes – Italy, World Vision and other NGOs to conduct further needs assessments in the affected areas and to carry out food distributions.

Resourcing Update

- WFP requires US\$19 million to meet all food assistance needs under the current project until the end of the year, excluding the supplementary needs deriving from the emergency response to the floods.
- WFP appeals to funding partners for additional resources to respond to the floods emergency. Some US\$3 million per month is required to meet food needs of the flood affected people. Therefore, the response lasting six months would denote an extra US\$18 million, resulting in an overall project funding shortfall of US\$37 million.
- The floods emergency response has been made possible so far thanks to the generous contributions from Australia, Canada, Czech Republic, European Union, Japan, Japan Association for WFP, Switzerland, United States and United Kingdom, as well as the logistical support from the Government of Myanmar, Air Bagan, Air KBZ, Golden Myanmar Airlines and Myanmar National Airlines.

Contacts

- Arsen Sahakyan
Partnerships Officer
arsen.sahakyan@wfp.org

Photos from the field

Flood affected people in Magway and Sagaing receiving WFP food assistance funded by EU, Japan and UK



Australian Ambassador H.E. Nicholas Coppel with WFP Common Logistics Service Manager Hien Adjemian at Yangon airport awaiting relief cargo from WFP-managed UNHRD in Malaysia

British Ambassador H.E. Andrew Patrick (middle) and WFP Country Director & Resident Representative Dom Scalpelli (second from right) visiting WFP warehouse in Yangon



© WFP Myanmar Emergency Response Team

With the Open Data Kit (ODK) application installed in WFP staff's mobile phones, it is now possible to track the locations of the real time assessments and food distributions with the latest photos from the field. To follow WFP Emergency Response Team online click [here](#)

