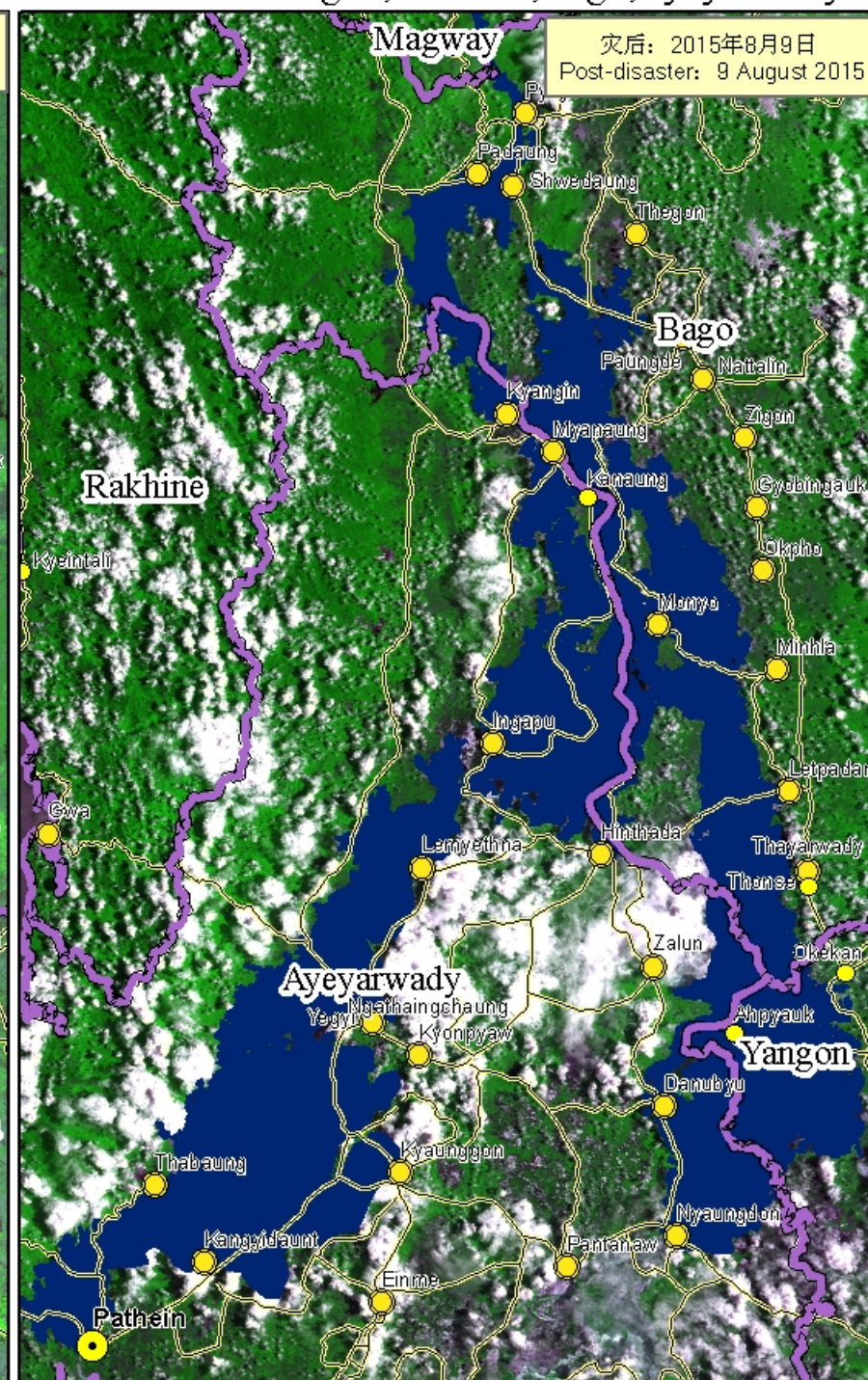
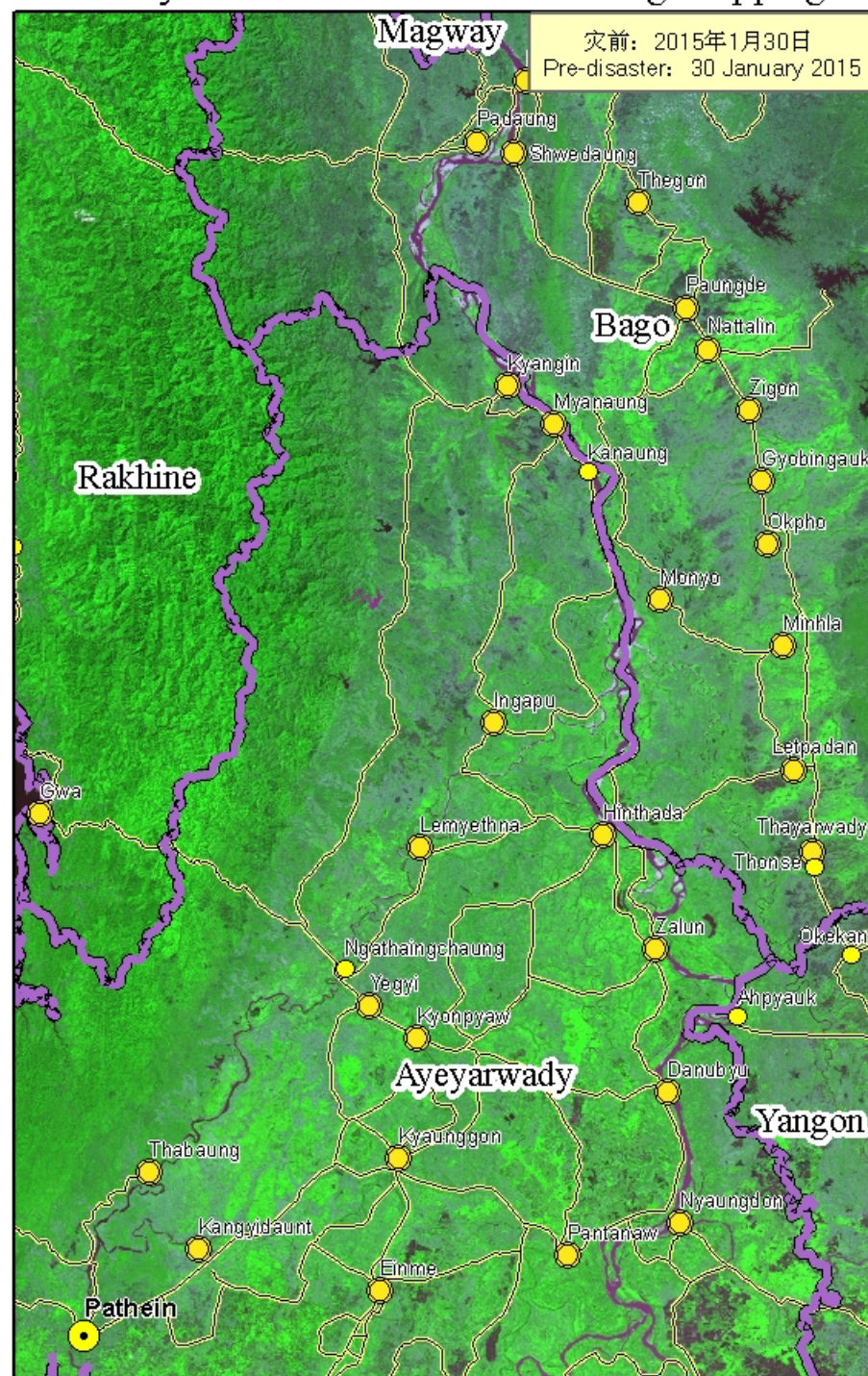


# 2015年缅甸洪涝灾害遥感监测产品

2015 Myanmar Flood Remote Sensing Mapping-Flooded Area in Yangon,Rakhine,Bago,Ayeyarwady&Magway on August 9th

图件编号 Map ID: FL-2015-008-024



2015年7月以来受连续大雨和热带风暴影响, 缅甸12个省邦遭受洪涝灾害, 7月31日国家总统签发国家通告令宣布钦邦、若开邦、实皆省、马圭省等4个省邦为重灾区。截至2015年8月4日, 洪水已造成21.7万人受灾, 46人死亡。

Because of the heavy rain and cyclone since July 2015, 12 states/regions out of the total 14 have been flooded. On 31 July, President issued a statement declaring 4 natural disaster zones. Over 217,000 people have been affected and 46 people killed by the flood till 4 August 2015.

利用8月9日环境减灾卫星卫星对缅甸洪涝灾区进行监测, 图中洪水淹没区面积6552km<sup>2</sup>, 影响33个乡镇, 1048个村。

The flood area is 6552km<sup>2</sup>. 33 Townships (1048 Villages) were inundated based on China HJ-1 satellite remote sensing.

The boundaries and names shown and the designations used on this map do not imply official endorsement or acceptance.

## 数据源 Data Sources

遥感数据 (RS Data): 环境减灾卫星 (HJ-1)  
地理信息 (GIS Data): www.mimu.info

