

MIMU



Schweizerische Eidgenossenschaft
Confédération suisse
Confederazione Svizzera
Confederaziun svizra

**Swiss Agency for Development
and Cooperation SDC**

MIMU Assessments & Publications

July 2022



WHY MIMU Assessments/Publications Tracking

- Share Assessment/Survey tool
- Coordinate information gathering initiatives
- Benefits from expertise, knowledge and learning in other sectors
- Avoid duplication and gaps in assessment coverage

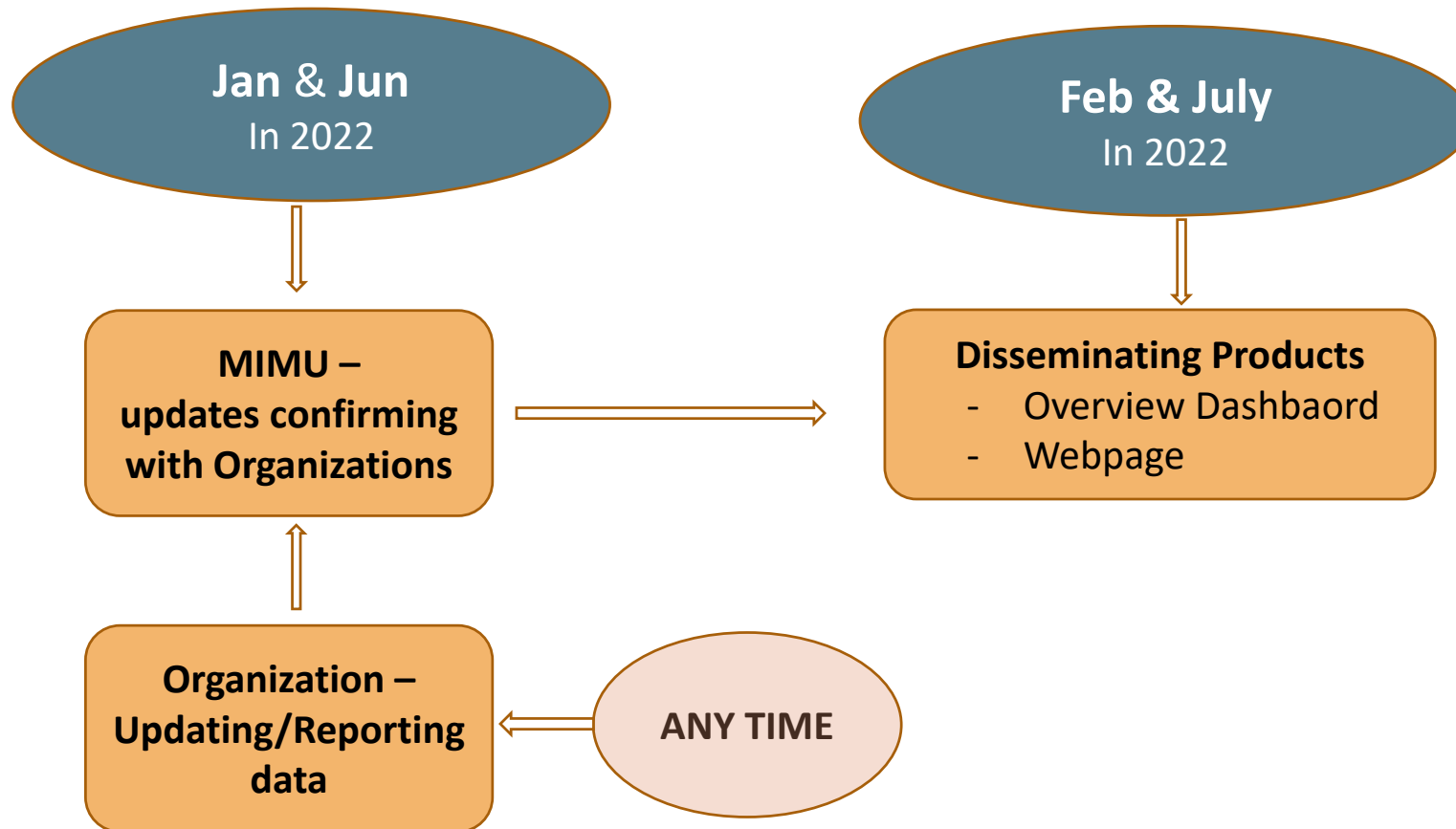
WHAT is Assessments/Publications Tracking

- An Assessment is defined as a survey or other piece of research
- A publication is any other published report or analysis

Record information on Myanmar-focused “Assessments/Publications”

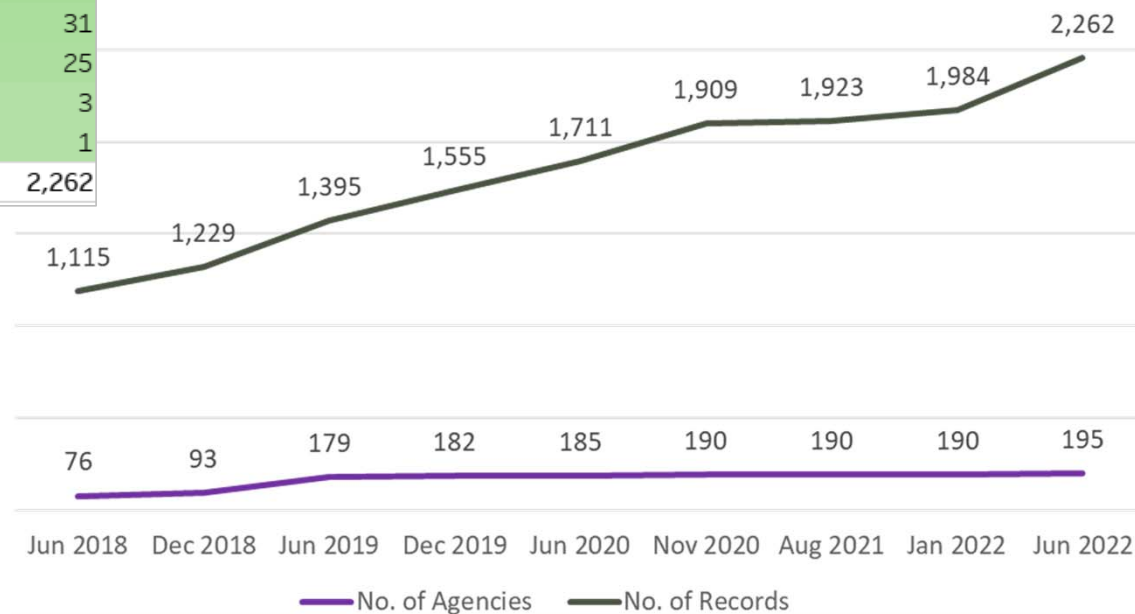
- **WHO** – involved agencies
- **WHAT** – Topics of Assessments/Publications, Sectors (based on 26 sectors), Type of report
- **WHERE** – Countrywide, State/Region and Township (# of Villages/Camps and # of HHs if available)
- **WHEN** – Start Month and Year, End Month and Year, Report status (frequency if applicable)
- **HOW** – Methodology, Survey unit, Mode of Data Collection
- **Accessing** Information – Report Availability, Type of information available, Language, Means of distribution

Assessments/Publications Tracking Cycle – Twice a Year

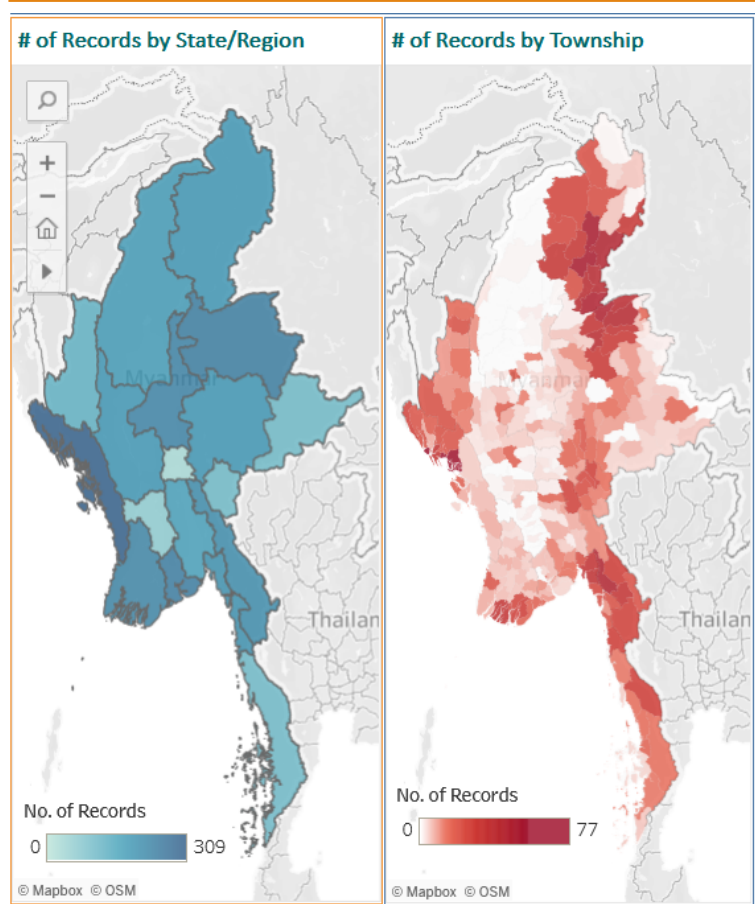


WHO Participated in?

UNOPS-3MDG	188		# of Organi	Total # of
CPG	165		sations	Records
UNOPS	159	INGO	79	940
IFPRI	100	UN	20	973
RI	83	NNGO	32	193
MIMU	81	Donor/Embassy	13	49
UNHCR	73	IO	20	47
Mekong Economics	58	Government	9	31
HELVETAS	58	Other.	20	25
UNOPS-LIFT	56	Red Cross	1	3
MCRB	51	CBO	1	1
IOM	50	Grand Total	195	2,262
UNFPA	44			
UNOCHA	41			
World Fish	39			
NAG	36			
ILO	36			



WHERE Assessments are conducted in?



WHERE- No. of records by State/Region

State/ Region	Total # of Records	(%)
Ayeyarwady	229	10
Bago (East)	172	8
Bago (West)	67	3
Chin	130	6
Country-wide	928	41
Kachin	192	8
Kayah	113	5
Kayin	213	9
Magway	193	9
Mandalay	233	10
Mon	202	9
Nay Pyi Taw	30	1
Rakhine	309	14
Sagaing	182	8
Shan (East)	113	5
Shan (North)	244	11
Shan (South)	193	9
Tanintharyi	111	5
Yangon	248	11
Grand Total	2,262	100

41% of assessments/publications have been done for countrywide level, followed by Rakhine, (14%), Shan (north) and Yangon (11% in each) and Ayeyarwady and Mandalay (10% in each).

Area with the least reported assessments/publications to date are Nay Pyi Taw and Bago (west).

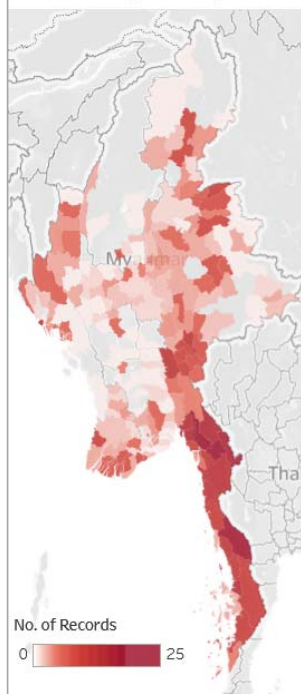
WHICH sectors mostly reported?

No. of Records by Type of Assessment

Development focused	Emergency - post conflict	Emergency - post natural disaster	Early warning/preparedness	Other
1,544	184	26	21	487
68%	8%	1%	1%	22%

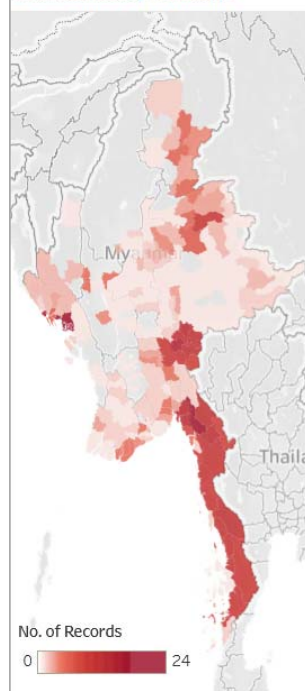
Health

of Records by Township



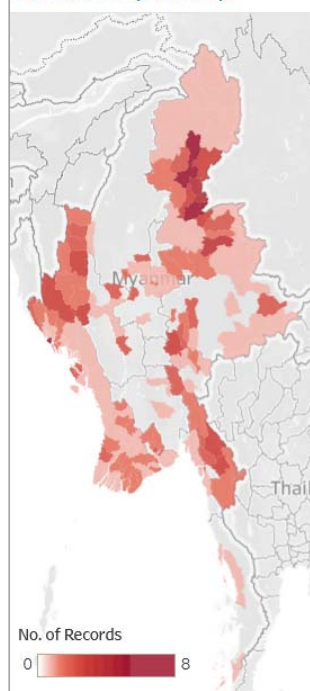
Protection

of Records by Township



Gender

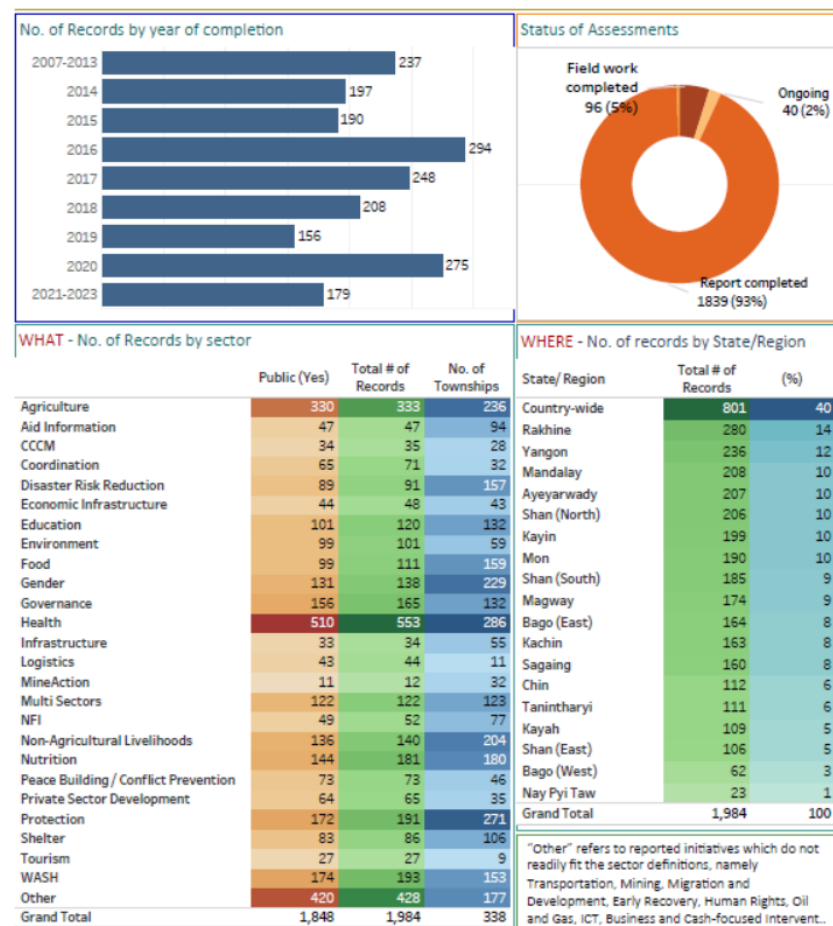
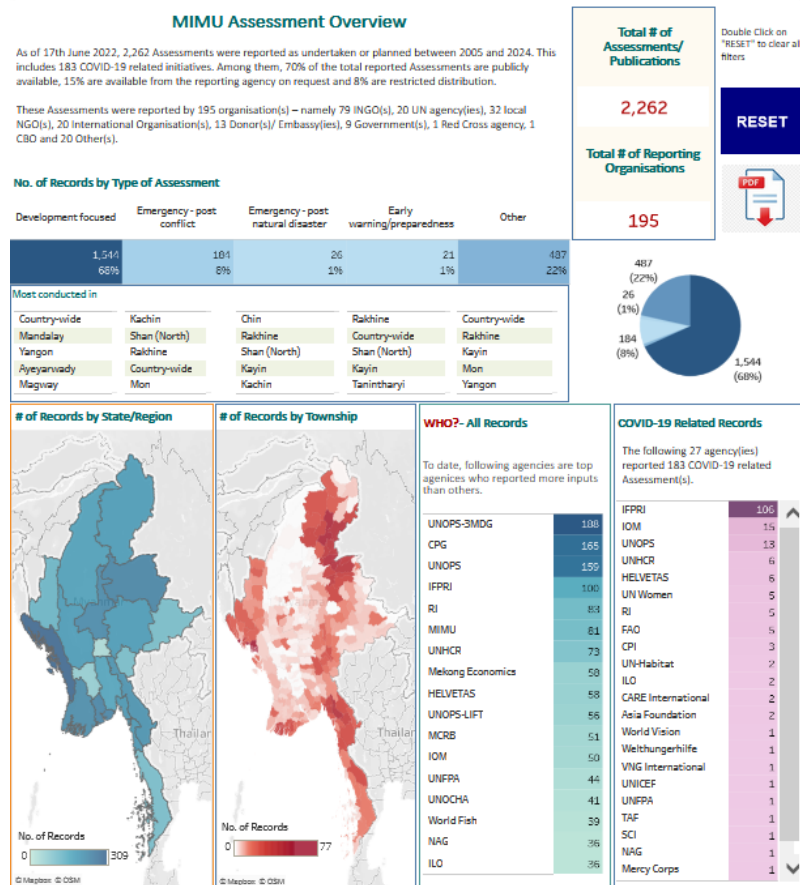
of Records by Township



	Public (Yes)	Total # of Records	No. of Townships
Agriculture	430	434	233
Aid Information	48	48	94
CCCM	64	64	39
Coordination	73	79	32
Disaster Risk Reduction	95	97	157
Economic Infrastructure	47	49	42
Education	120	121	131
Environment	101	104	58
Food	111	119	159
Gender	140	145	227
Governance	161	165	130
Health	538	565	283
Infrastructure	36	36	56
Logistics	43	44	11
MineAction	11	12	32
Multi Sectors	136	136	122
NFI	73	74	81
Non-Agricultural Livelihoods	143	145	204
Nutrition	222	231	186
Peace Building / Conflict Prevention	73	73	45
Private Sector Development	65	67	34
Protection	188	195	270
Shelter	104	105	110
Tourism	27	27	9
WASH	197	201	152
Other	584	588	181
Grand Total	2,189	2,262	335

Assessments/Publications Overview Dashboard

<http://themimu.info/assessment-dashboard>



Assessments/Publications Records through the MIMU website

<http://themimu.info/assessments-and-publications>

Assessment & Publication Search

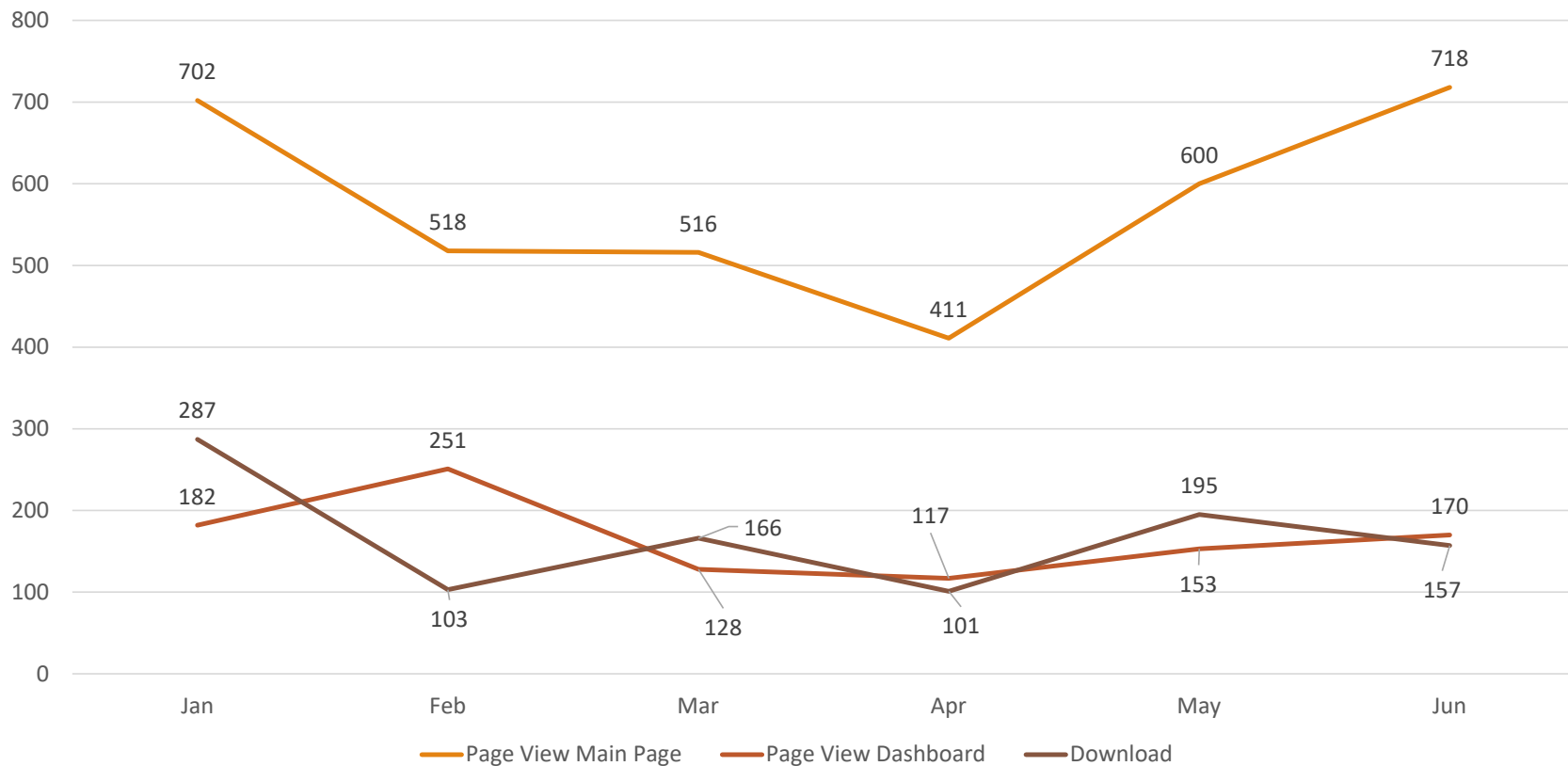
Assessment Title <input type="text"/>	Participating Agencies - Any -	Type of Assessment - Any -
Sectors - Any -	State/Region - Any -	Townships - Any -
Start Date - Year -	Status - Any -	End Date - Year -
		COVID-19 Related - Any -
Search Reset		

Assessment Title	Sectors	Agencies	State/ Region	Start Date	Status	Availability	File Attachment	Details
Baseline KAP Survey	Agriculture, Non-Agricultural Livelihoods, Nutrition, WASH	Ar Yone Oo Social Development Association	Chin	Nov-2019	Report completed	Available on request		View Details
Livelihoods, poverty, and food insecurity in Myanmar: Survey evidence from June...	Agriculture, Food, Nutrition	International Food Policy Research Institute	Magway, Mandalay, Sagaing, Yangon	Jun-2020	Report completed	Publicly available		View Details
Beyond emergency relief: What will it take to ensure a resilient recovery for a...	Agriculture, Food	International Food Policy Research Institute	Country-wide	Feb-2015	Report completed	Publicly available		View Details

Collective learning from CSOs in Rakhine State (ENGLISH)

MIMU Assessment Code:	HARP_043
Participating Agencies:	Humanitarian Assistance and Resilience Programme Facility
Entry Date:	30-Jun-2022
Last Updated:	04-Jul-2022 16:19
Type of Assessment:	Development focused
Sector(s) covered:	CCCM Coordination Multi Sectors Other
State/Region:	Rakhine
Status:	Report completed
Start Date:	Dec-2020
End Date:	Dec-2020
Report Availability:	Publicly available
Type of Information Available:	Full Report
Language of the report/summary:	English
Means of distribution:	Weblink Soft Copy
File Attachment:	 Collective_learning_report.pdf

Tracking of Accessing Webpage in 2022



How to participate in the Assessments/Publications Tracking

Get the Data Entry Form and Guidelines through the MIMU website

<http://themimu.info/assessments-and-publications>

+ Overview of Recorded Assessments

+ To submit/update Assessments & Publications

– To submit/update Assessments & Publications

- Before adding an assessment please read our [Guideline_Assessment_and_Publication_28May2020.pdf](#)
- To submit an assessment offline, please fill in the [MIMU_Assessment_Registry_EntryForm_28May2020.xlsm](#) and email it to assessment@themimu.info
- To submit or edit an assessment online please click the button below.
- Newly added or edited assessments will be subject to review by MIMU prior to being published/updated on the website.

Login/Register to submit assessment

Data Protection measures

1) Agencies decide level of data protection when submitting their 3W inputs

- **Open** – Records with agency name can be found through the MIMU website
- **Restricted** – agency names no longer appear in public products

MIMU Assessment Code	COVID-19 Related	Org Acronym	Org Type	Submission Contact Agency	Participating Agencies	Can this be shown publicly on the MIMU website?	Assessment Title	Type of Assessment	Sector(s) covered	Sub Sector(s) covered	State/ Region	Townships covered	Number of villages	Number of Households in Villages	Number of IDP camps/sites	Number of Households in IDP camps
OrgZZZ_007	No	OrgZZZ	INGO	OrgZZZ	OrgYYY, OrgZZZ, OrgBBB	No	Sample title	Emergency - post conflict	Coordination		Rakhine					
SCI_016	No	SCI	INGO	Save the Children in Myanmar	Save the Children	Yes	Education Rapid Need Assessment	Emergency - post conflict	Education		Rakhine	Sittwe			6	5828
TGH_001	No	TGH	INGO	Triangle Génération Humanitaire	Triangle Génération Humanitaire, Ar Yone Oo Social Development Association	Yes	Inception Phase - Brief Paper	Other	Agriculture	Irrigation, Land protection	Chin	Matupi	13	868		
UNHCR_001	No	UNHCR	UN	United Nations High Commissioner for Refugees	United Nations High Commissioner for Refugees, Bridge Asia Japan, Malteser International, World Food Programme, Food & Agriculture Organization	Yes	NRS 2010 Household survey	Other	Agriculture		Rakhine	Buthidaung	120	1200		

How to update ?

Frequency

Send invitation to update the records **every six months**

To Whom

All agencies who registered in the MIMU Contact list

How long for updating records by agencies

2 weeks from the date of requesting updates

How long for updating products by MIMU

2 weeks at most



Thank you for your attention!



Myanmar Information Management Unit

The Office of the UN RC/HC

First Floor, No. 5, Kanbawza Street, Bahan Township, Yangon.



Ei Ei Thein

Data Manager

Email : ei.ei.thein@undp.org

Mobile : 09-451655539