

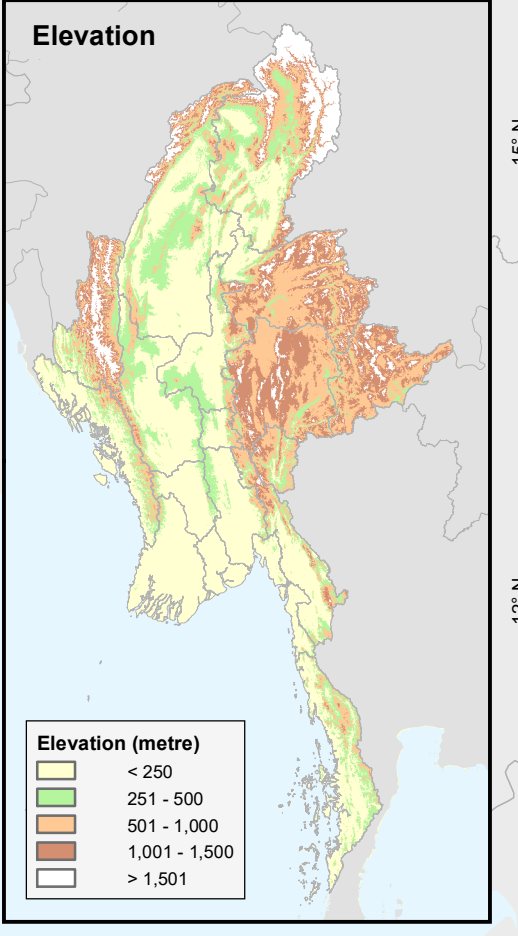
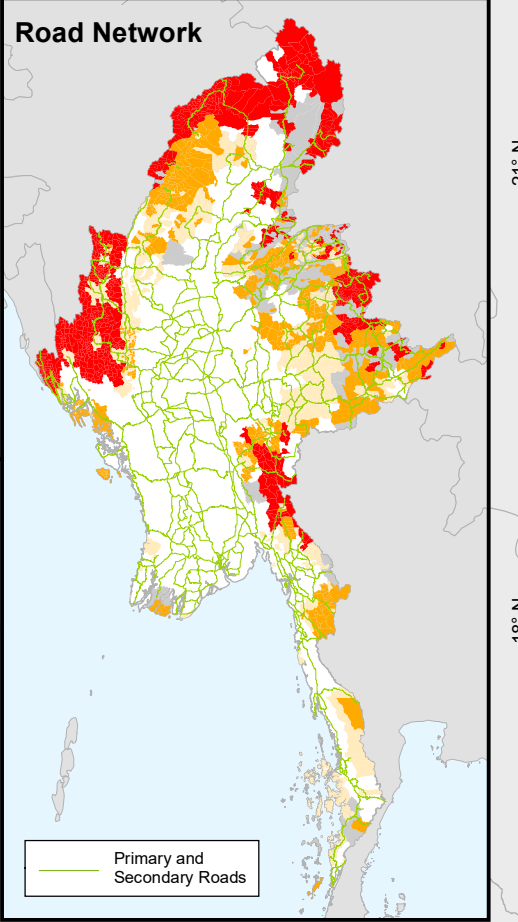
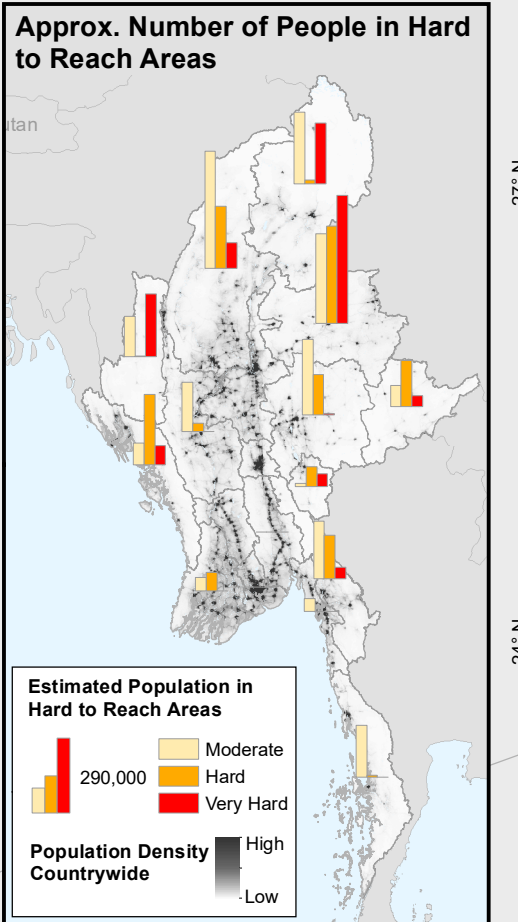
Hard to Reach Areas are defined by the General Administration Department according to **Road Accessibility across seasons**

5% of the listed Village Tracts couldn't be included in this map due to limited available data on location.

Estimated Population living in Hard to Reach Areas (in million)*

Moderate	2.9
Hard	1.8
Very Hard	1.1
TOTAL	5.8

representing around **12%** of the total population
 * based on Census 2014



Legend

Town

- State/Region Capital
- Union Capital

Category

- Type A - Moderate
- Type B - Hard
- Type C - Hardest
- Not Available*

* Township including Village Tracts designated as Hard to Reach which cannot be mapped

Map ID: MIMU1648v01
 Production Date: 03 September 2019
 Paper Size: A3
 Projection/Datum: Geographic/WGS84

Data Source: General Administration Department.
 Order No. 44/219, 8 May 2019
 Basemap and roads: MIMU, OSM
 Population: Census 2014, WorldPop 2015
 Elevation: SRTM
 Place Names: General Administration Department. Transliteration by MIMU

This product has been prepared for operational purposes only, to support humanitarian and development activities in Myanmar.
 E-mail: info.mimu@undp.org
 Website: www.themimu.info

Copyright © Myanmar Information Management Unit 2019. MIMU products are not for sale and can be used free of charge with attribution.
 Note that this map may not show all islands of coastal areas due to scale limitations.

