

MIMU



MIMU 5W – August 2023

IMN, October 2023

MIMU 5W

Since 2007

HDP activities based on voluntary agency contributions

□ Regular Countrywide 5W – every 6 mths

Who 211 agencies (UN, INGO, LNGO Red Cross)

What 22 Sectors, 152 Sub Sectors, ~~technical assistance~~

Where Activity location to village, camp levels

When Whether project is planned, ongoing, ended, suspended and why

For Whom Type of project beneficiaries

- IDP only
- IDP & host community
- Other vulnerable groups (non IDP)
- Development focus

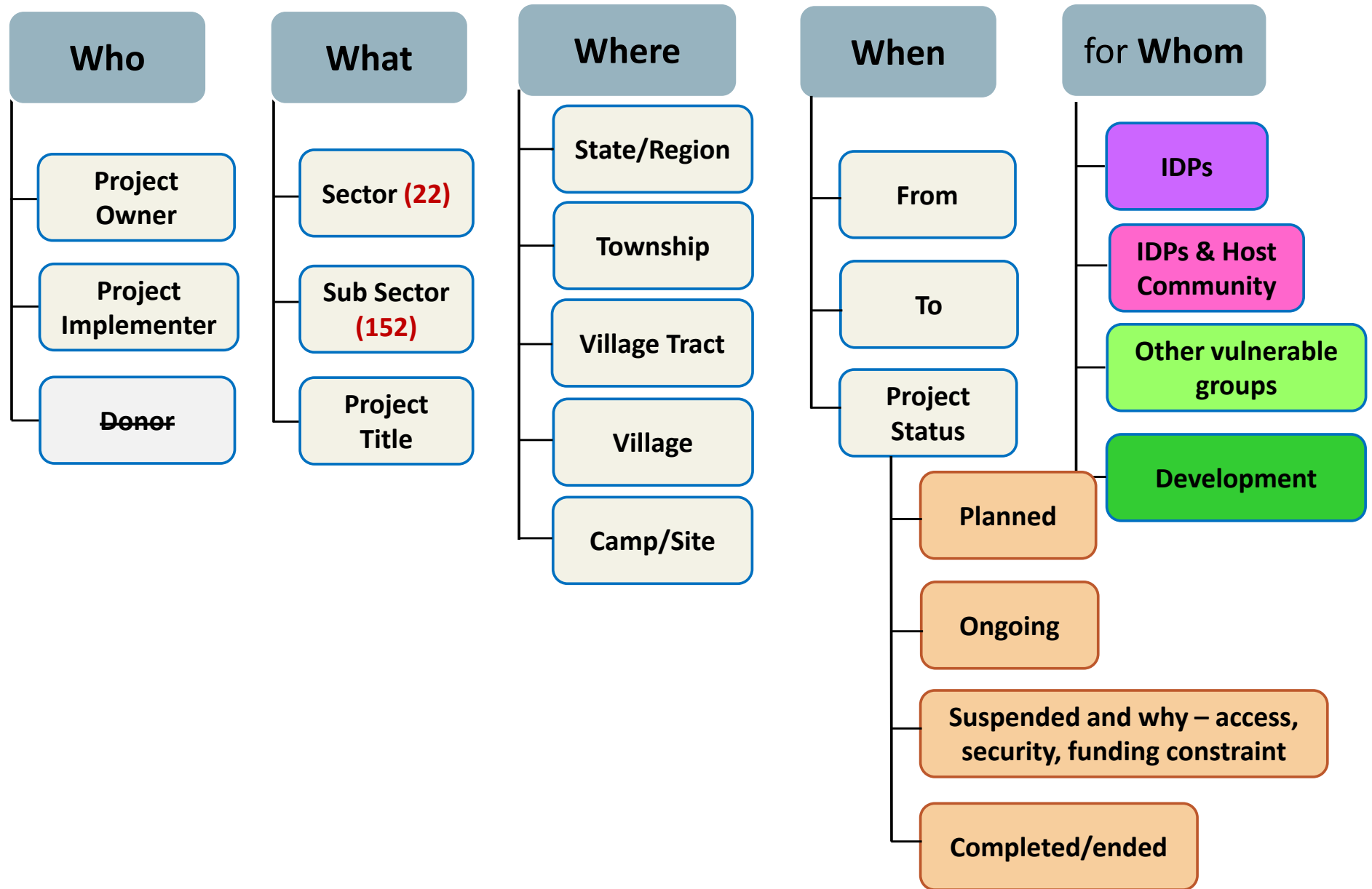
□ Emergency 5W – triggered by ICCG



Projects under implementation

<https://themimu.info/5w-maps-and-reports>

MIMU 5W



MIMU 5W – 22 Sectors, 152 Sub-sectors

 Agriculture

 CCCM

 Coordination

 Disaster Risk Reduction

 Education

 Environment

 Mine Action

 Non-Food Items

 Nutrition

 Peace-building /
Conflict prevention

 Private Sector
Development

 Protection

 Shelter

 Social Protection

 Responsible
Tourism

 WASH

 Food

 Governance

 Health

 Infrastructure

 Livelihoods

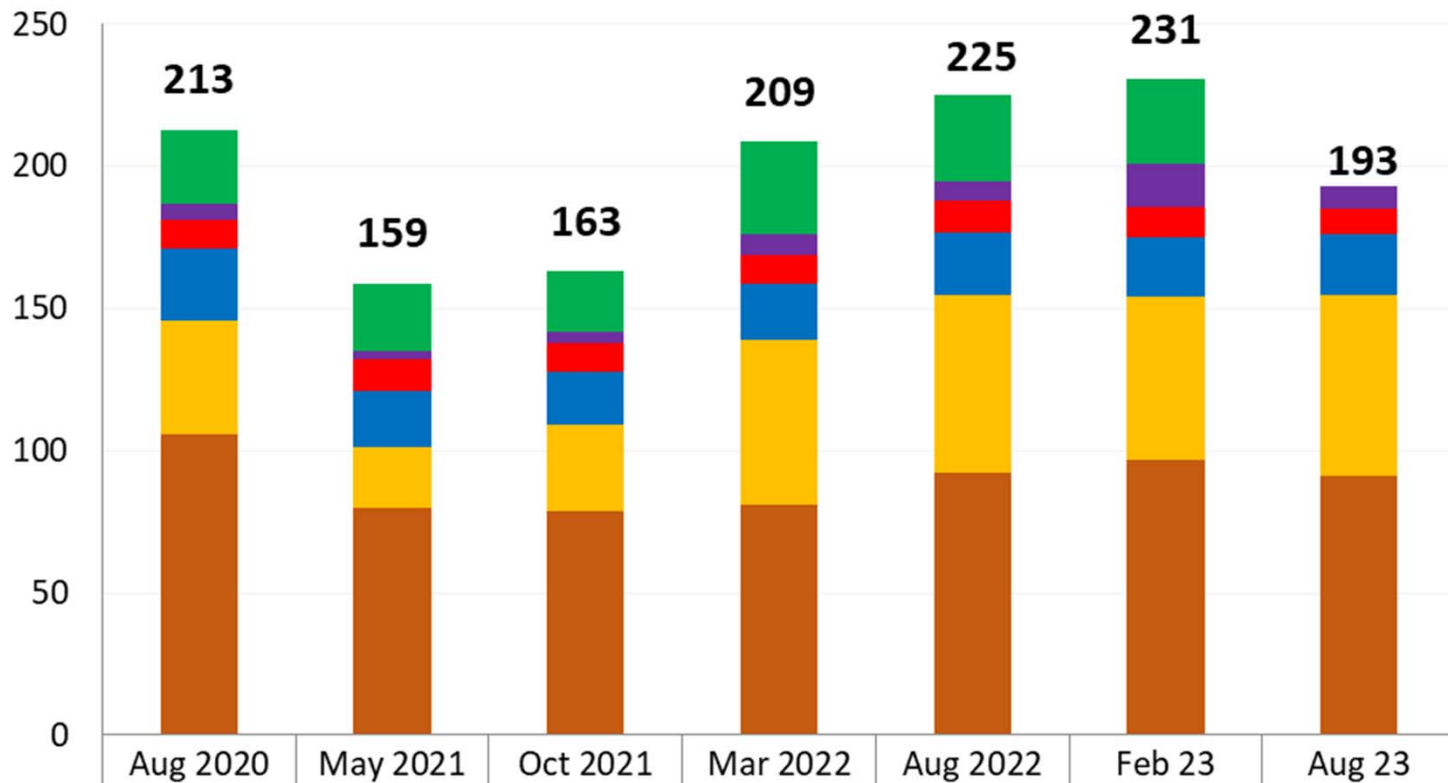
 Logistics

Sub Sector	Sub Activities/Brief Description
Livelihoods Sector	
Cash For Work	Cash support to individuals for construction/repair of critical community-level infrastructure (jetties, footpaths, roads, schools, health facilities, etc.). Involves the use of employment-intensive techniques and local labour to facilitate rapid income generation.
Cash Grants	The provision of unconditional cash transfer/cash grant (not loan) to vulnerable individuals or households to meet their basic needs for food and non-food items, or services, or to buy assets essential for the recovery of their livelihoods.
Income Generation Support	Conditional cash grants to vulnerable individuals or households to support sustainable livelihood generation.
Micro-Finance	Microfinance support to those who would not normally qualify for credit through the banking system to improve their livelihoods (i.e. women, the landless, and other marginalized groups).
Support to CSOs	Building the capacity of/supporting civil society organizations – community-based organizations, youth groups, women's groups and other self-help organizations – including through community mobilization activities and the strengthening of women's networks.
Vocational Education and Training	Training to provide individuals with knowledge, skills and competencies required for a particular job in the labour market.

❑ Subsectors developed with clusters/sectors/technical and expert working group

❑ Periodic review with minor changes but subsectors must be distinct

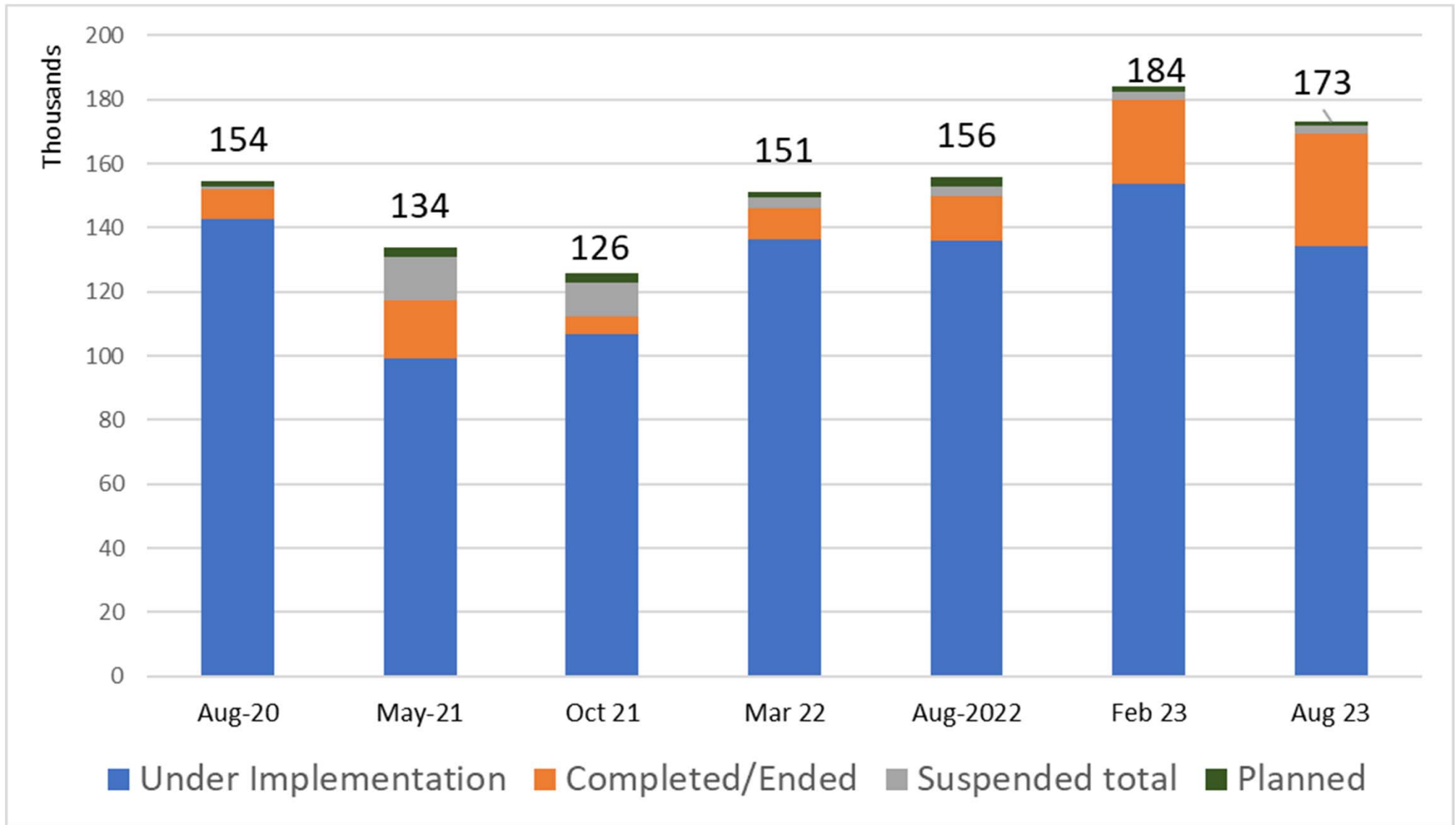
Reporting agencies – Aug'23



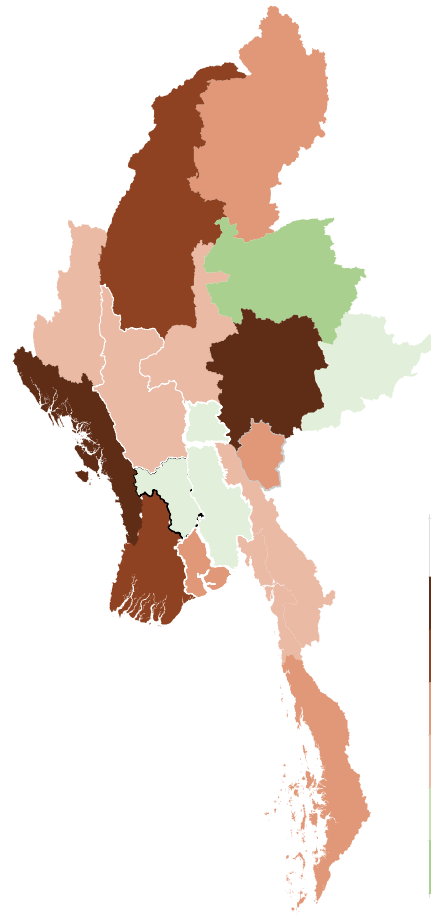
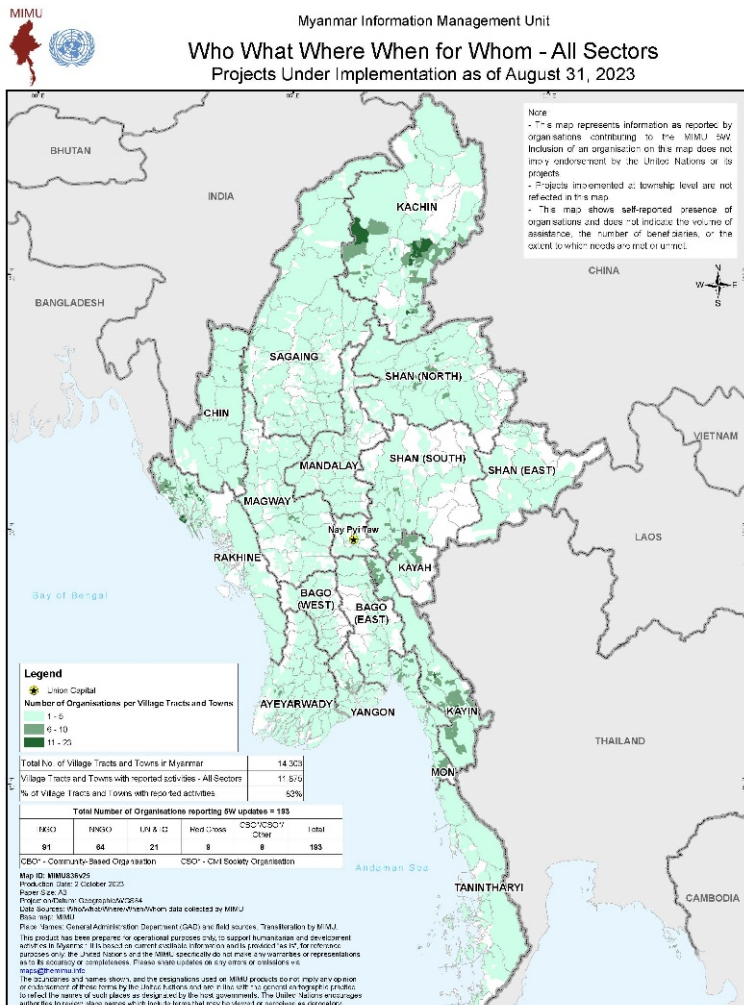
16%
decrease in
reporting
agencies,
mainly
border
based
agencies

Reported activities per location 2020 - 2023

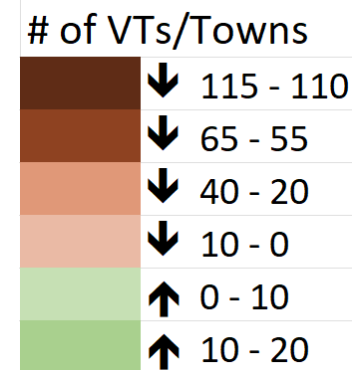
6% decrease in total reported activities per location



Reported activities at VTs/Towns



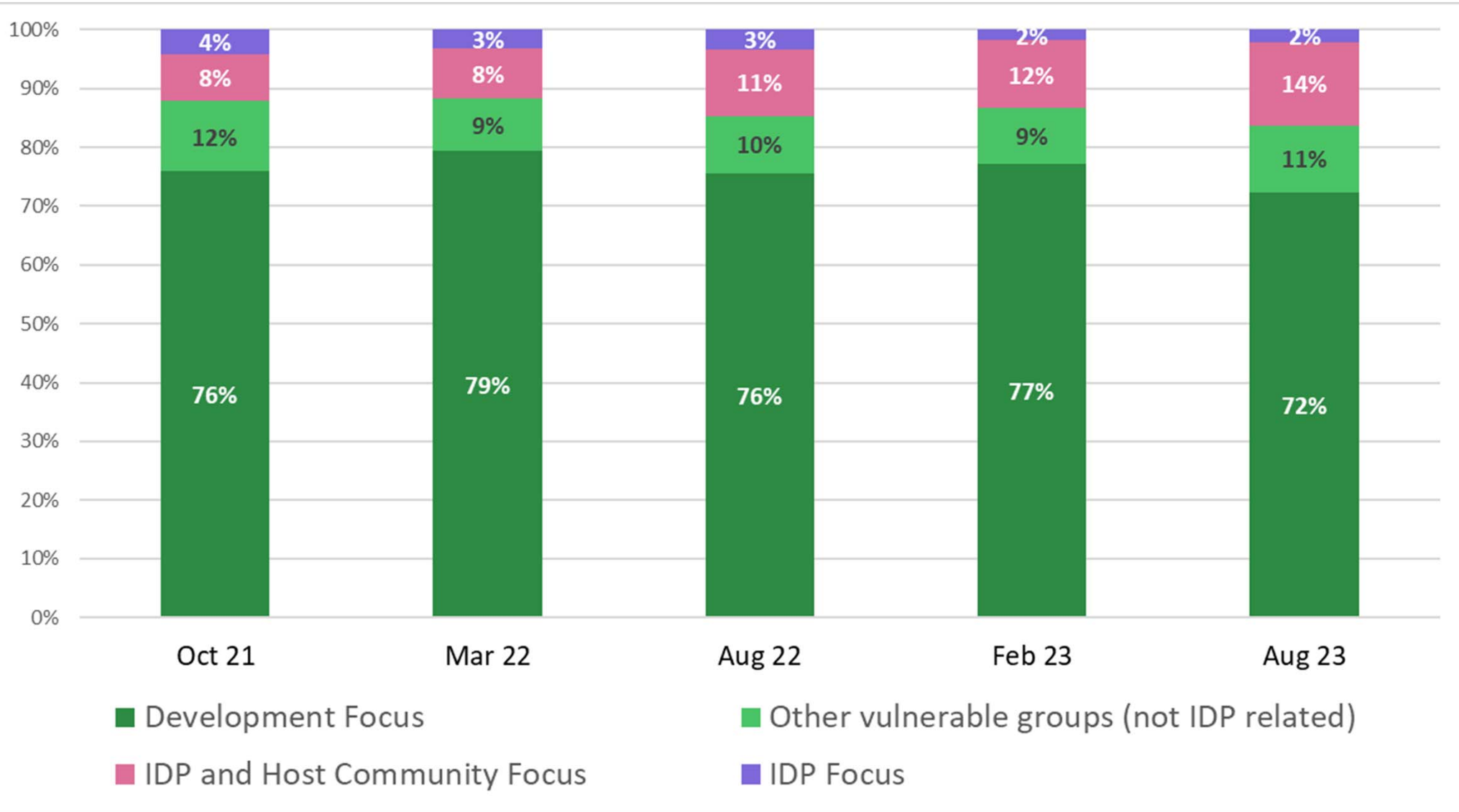
73% decreased in reporting at VT level in **Livelihoods** Sector, followed by 18% in Protection and 11% in Nutrition.



Village tracts/towns with reported activities	Aug-20	May-21	Oct-21	Mar 22	Aug-22	Feb-23	Aug-23
Total No. of Village Tracts (VTs) and Towns in Myanmar	14,304	14,303	14,303	14,303	14,303	14,303	14,303
VTs and Towns with reported activities – All Sectors	12,490	10,984	10,744	11,887	12,085	12,346	11,875
% of VTs and Towns with reported activities	87%	77%	75%	83%	85%	86%	83%

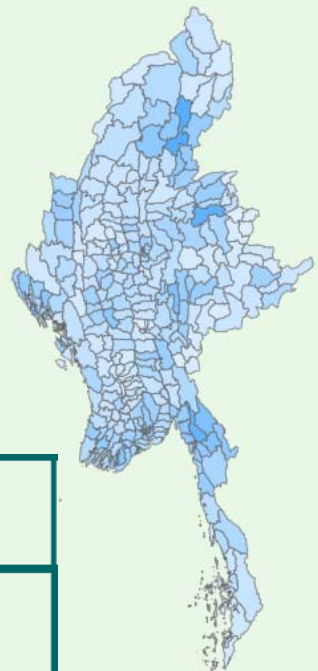
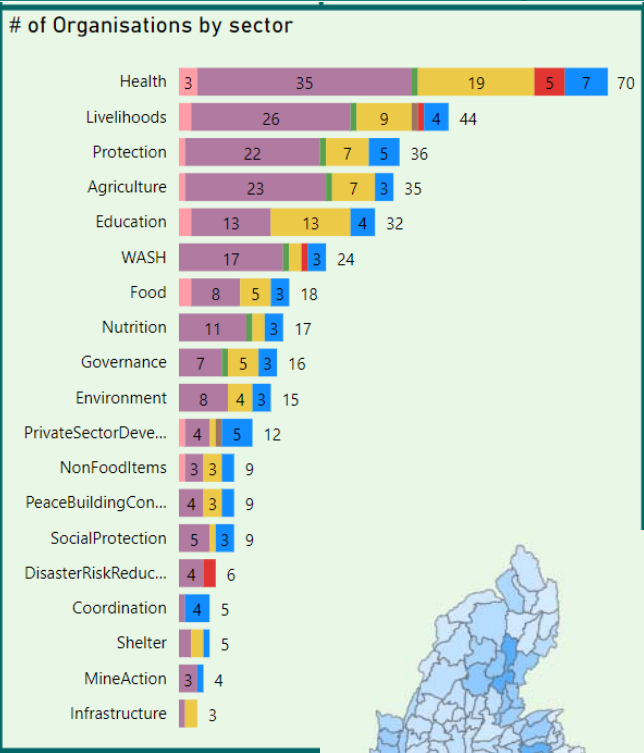
Ongoing activities by Project focus 2020 - 2023

Project focus extended countrywide in Oct 2021



Project focus as of Aug 2023 (Ongoing activities)

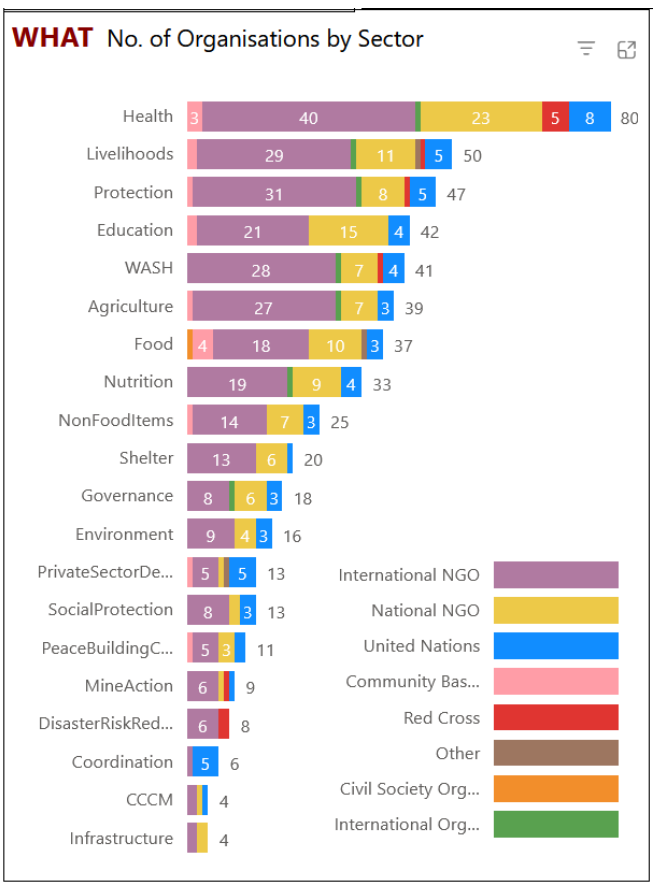
Non-displaced Populations (Focus on Development or Other Vulnerable Groups)



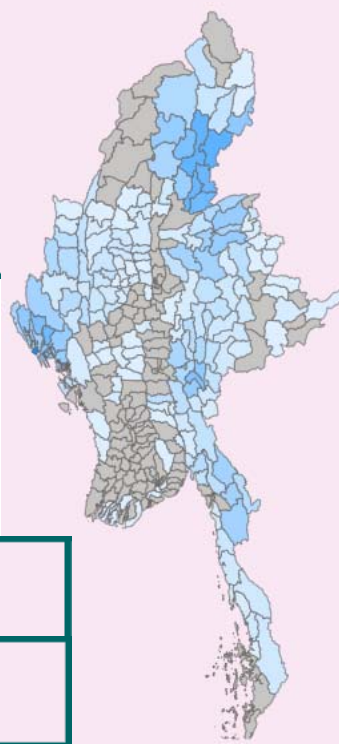
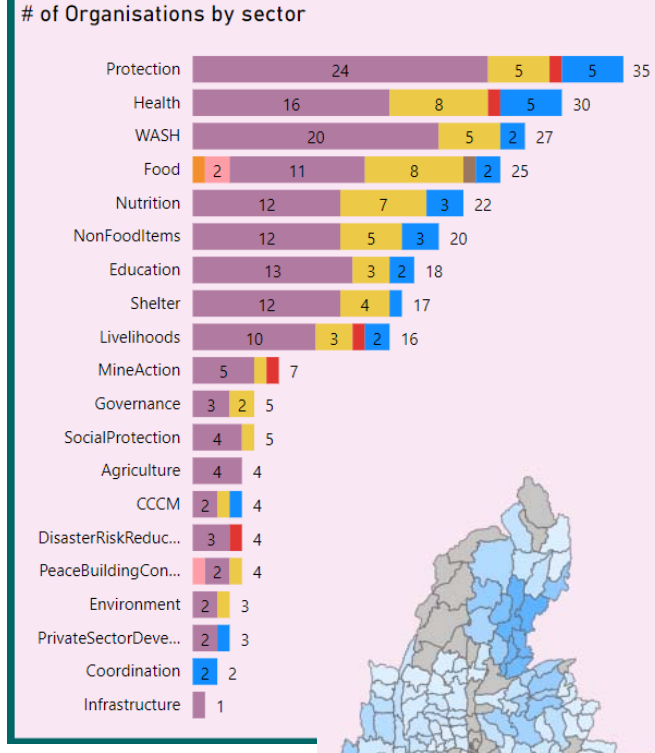
of Organisations
164
% of Grand Total
77.7%

All Projects

181
(85.8%)
Organisations



Displaced Populations and Host Communities



of Organisations
78
% of Grand Total
37%

Additional Data Protection measures since 2021

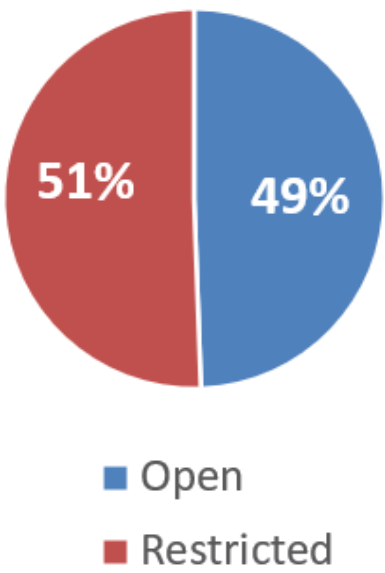
1) Agency names no longer appear in Public products

- But may be shared in 5W data for restricted use by contributing agencies, for inter-agency coordination.

2) Agencies decide level of data protection when submitting their 5W inputs

- **Open** – agency names can be shared for restricted purposes (contributing ags, inter-agency coordination)
- **Restricted** – agency name is marked UNSPECIFIED, including in restricted products

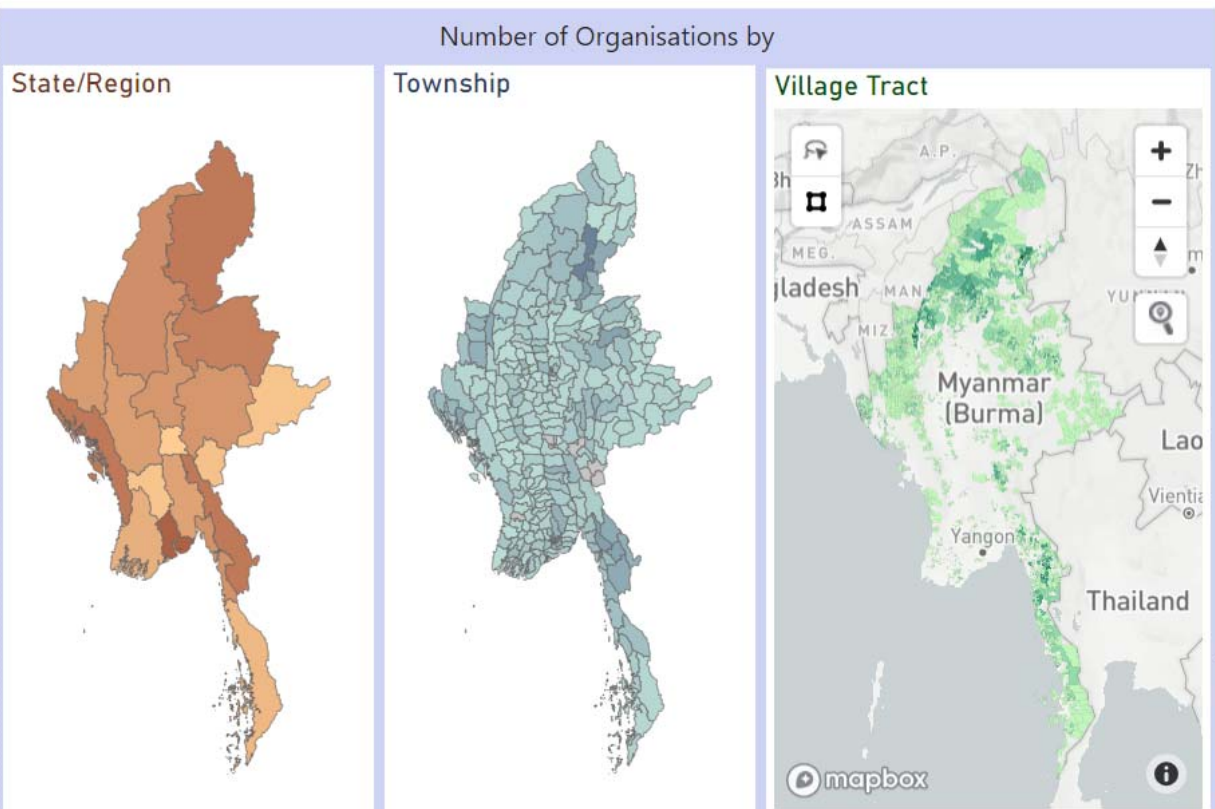
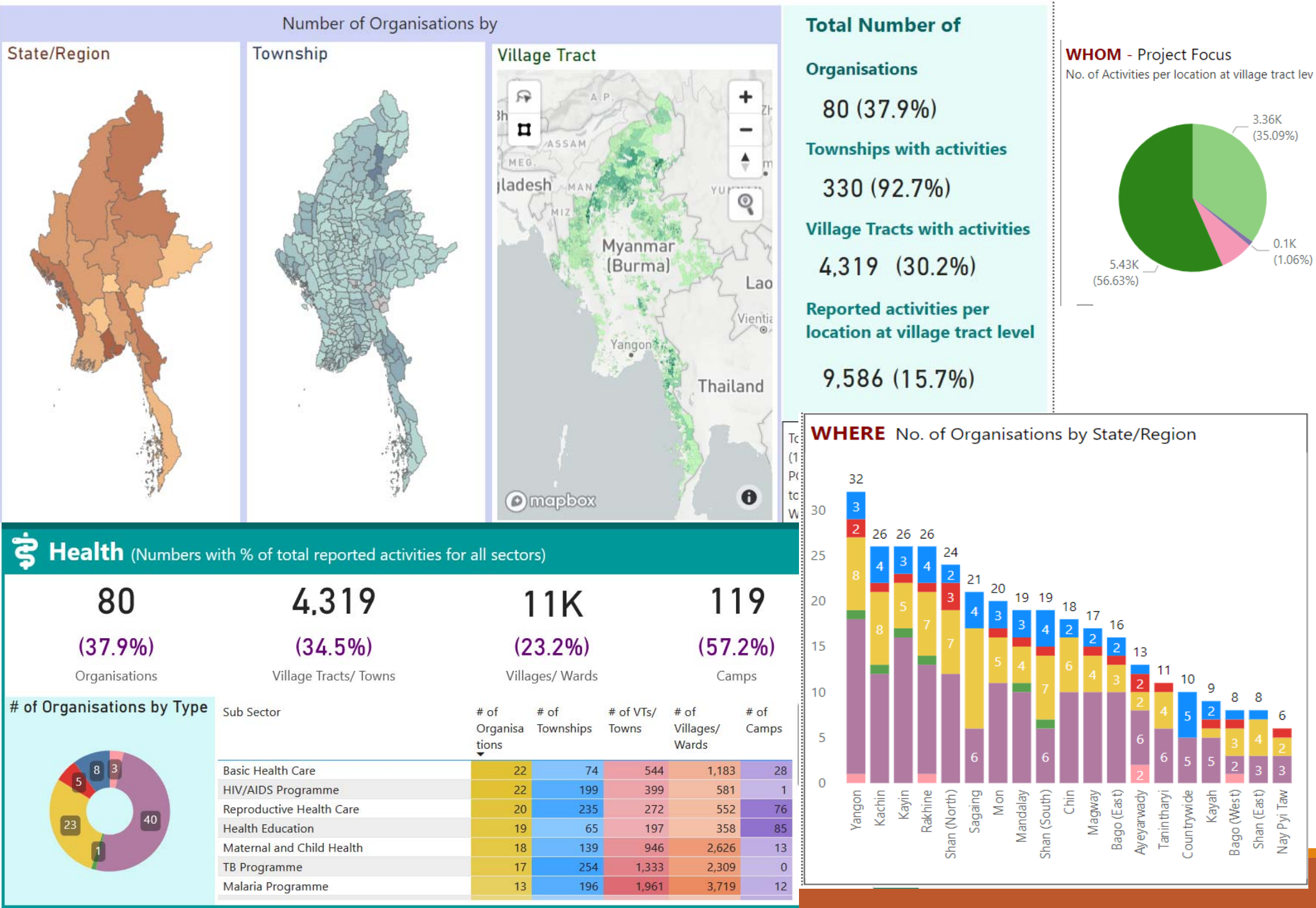
% of reported data rows



2021 – no agency names in public products

Organisation	Organisation Acronym	Organisation Type	Implementing Partners	Sector	Sub Sector	State/ Region	Township	Village Tract	Village_Ward	IDP Camp_ Site Name	Project Title	Project ID
OrganisationYYYY	YYYY	International NGO		Governance	Elections	Chin	Paletwa	Mee Chaung Bar	Ah Htet Bar Wa		Voter Education on E	
OrganisationYYYY	YYYY	International NGO		Governance	Elections	Chin	Paletwa	Mee Chaung Bar	Dai Wa		Voter Education on E	
OrganisationYYYY	YYYY	International NGO		Governance	Elections	Chin	Paletwa	Mee Chaung Bar	Mee Chaung Bar Wa		Voter Education on E	
OrganisationYYYY	YYYY					Chin	Paletwa	Par Maung	Par Maung		Voter Education on E	
OrganisationYYYY	YYYY	International NGO		Governance	Elections	Chin	Paletwa	Taing Wa	Taing Wa		Voter Education on E	
OrganisationZZZZ	ZZZZ	International NGO		Governance	Elections	Chin	Paletwa	Taing Wa	Taing Wa		Voter Education on E	
OrganisationZZZZ	ZZZZ	International NGO		Governance	Elections	Chin	Paletwa	Tin Bone	Ngar Wa		Voter Education on E	

Analysis by sector – Health Ongoing Projects (Aug 23)



Total Number of Organisations

80 (37.9%)

Townships with activities

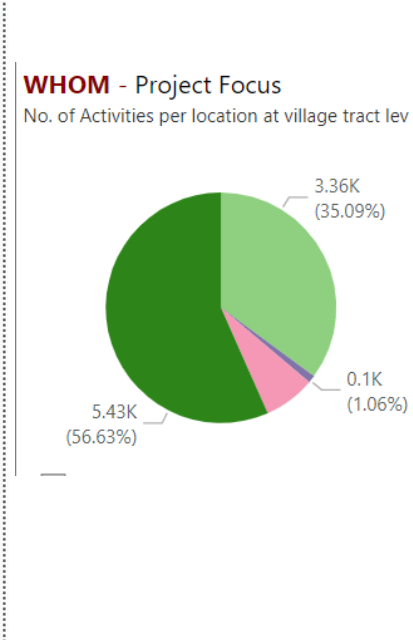
330 (92.7%)

Village Tracts with activities

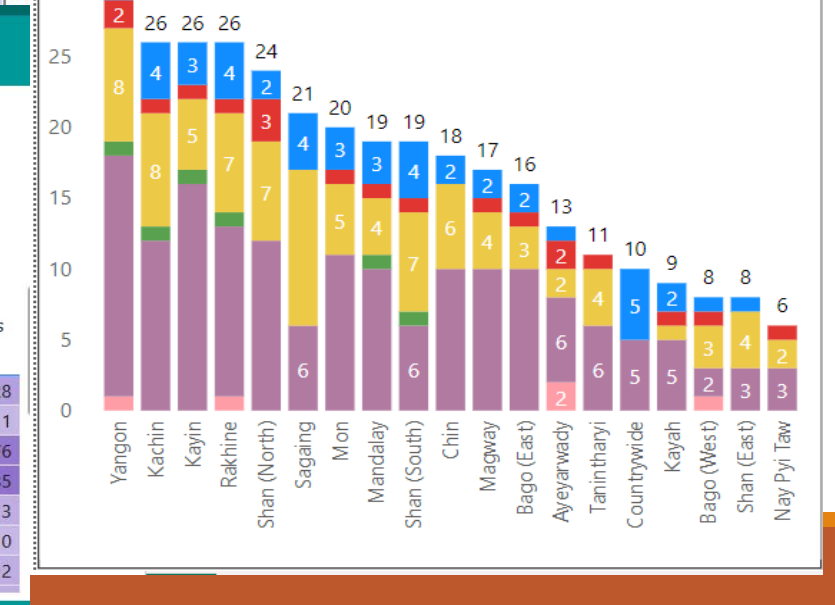
4,319 (30.2%)

Reported activities per location at village tract level

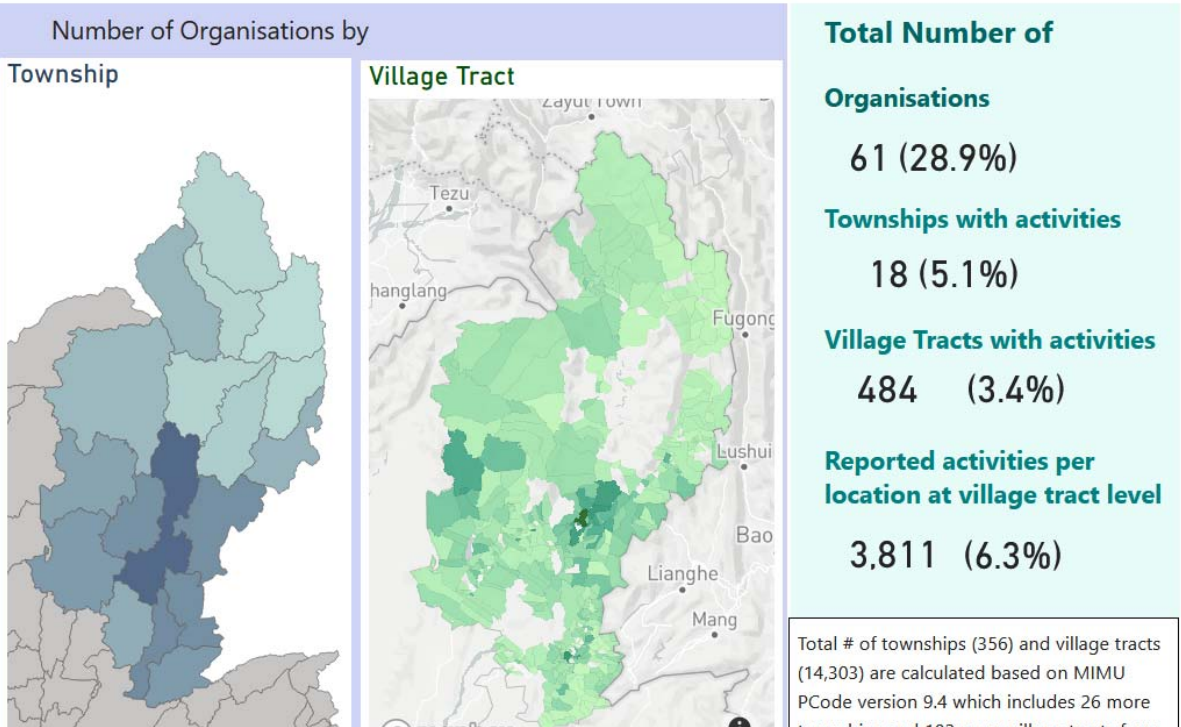
9,586 (15.7%)



Health (Numbers with % of total reported activities for all sectors)					
80	4,319	11K	119		
(37.9%)	(34.5%)	(23.2%)	(57.2%)		
Organisations	Village Tracts/ Towns	Villages/ Wards	Camps		
# of Organisations by Type					
Sub Sector	# of Organisations	# of Townships	# of VTs/ Towns	# of Villages/ Wards	# of Camps
Basic Health Care	22	74	544	1,183	28
HIV/AIDS Programme	22	199	399	581	1
Reproductive Health Care	20	235	272	552	76
Health Education	19	65	197	358	85
Maternal and Child Health	18	139	946	2,626	13
TB Programme	17	254	1,333	2,309	0
Malaria Programme	13	196	1,961	3,719	12



Analysis by State/Region – Kachin Ongoing Projects (Aug 23)



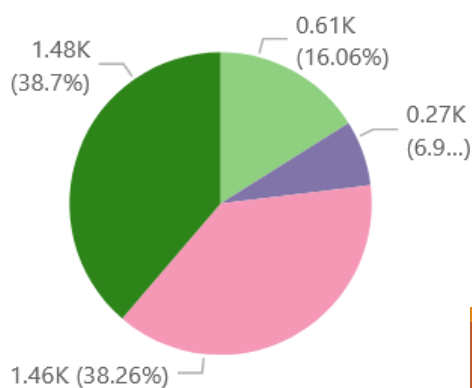
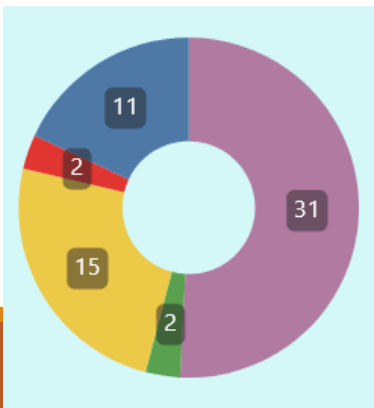
ALL Sectors (Overall Numbers and % of total reported activities)

61 (28.9%) Organisations

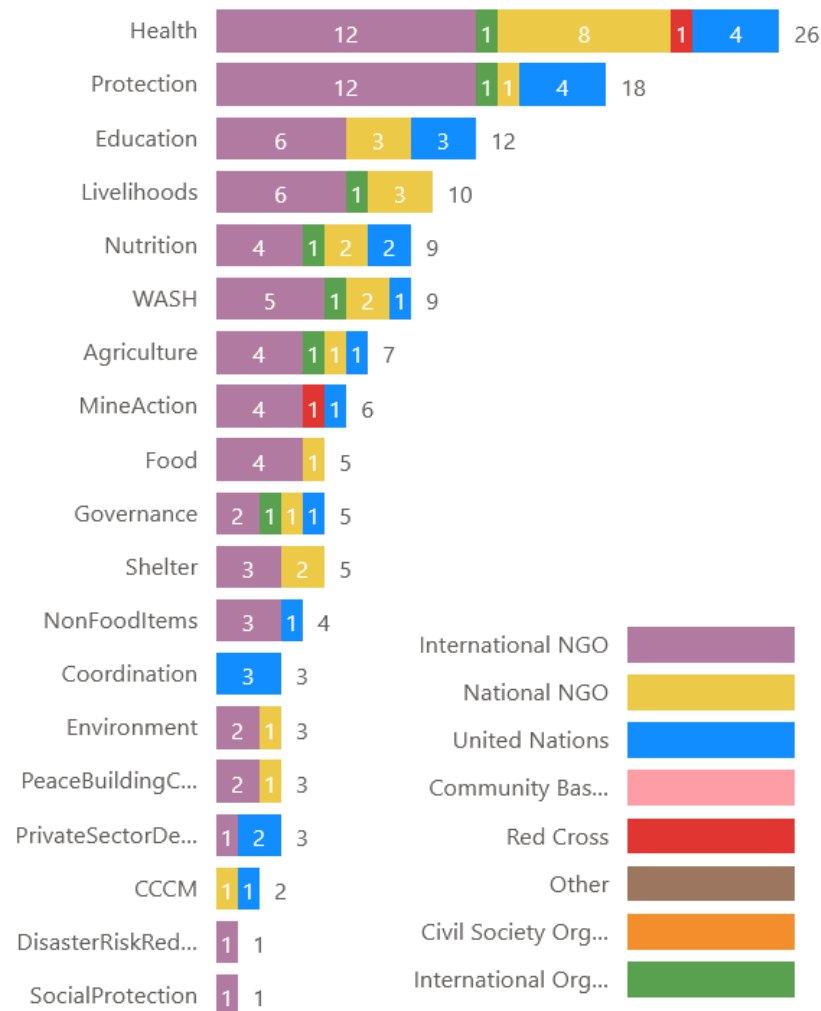
484 (3.9%) Village Tracts/Towns

1,784 (3.8%) Villages/Wards

130 (62.5%) Camps



WHAT No. of Organisations by Sector



MIMU 5W - Products

5W Dashboards

- TS, Village tract/sub-sector
- 5W Overview & One pager

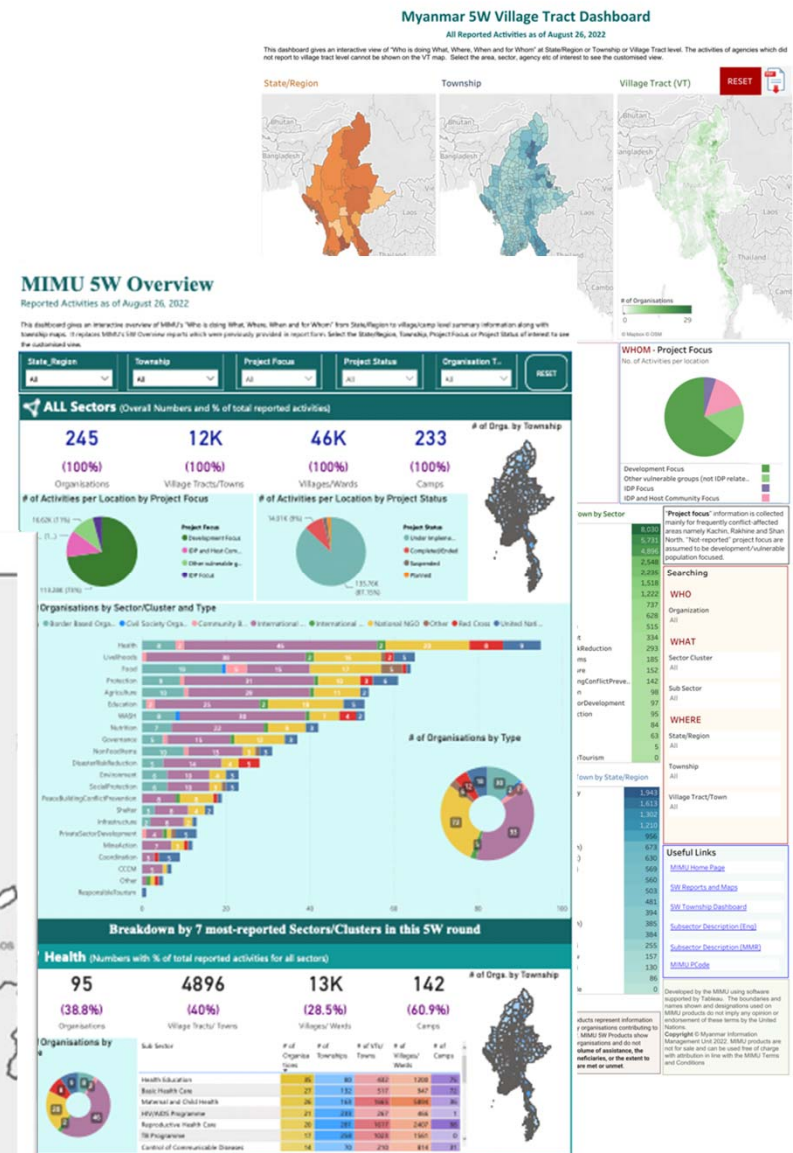
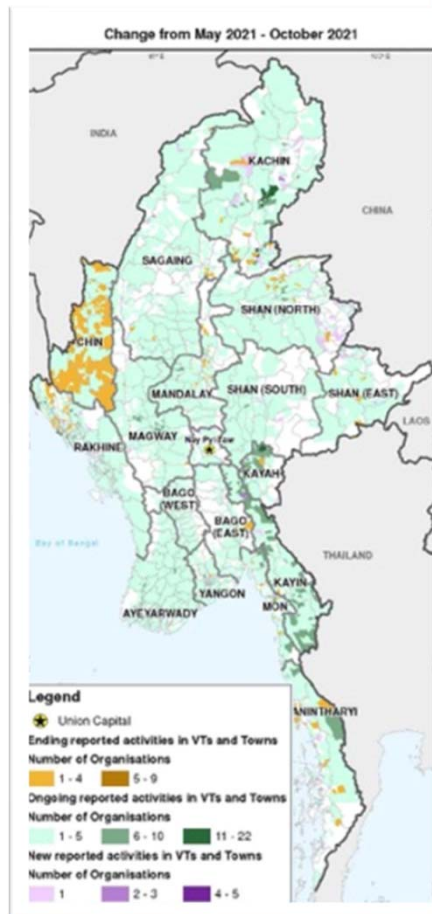
5W Maps, Tables

- Area, sector
- Project focus
- New vs ended projects

5W Trends

- 2020 – 2023

5W Dataset - *restricted*



31,000 downloads/pageviews of MIMU 5W products in 2022

Thank you

For more information, contact “info.mimu@undp.org”