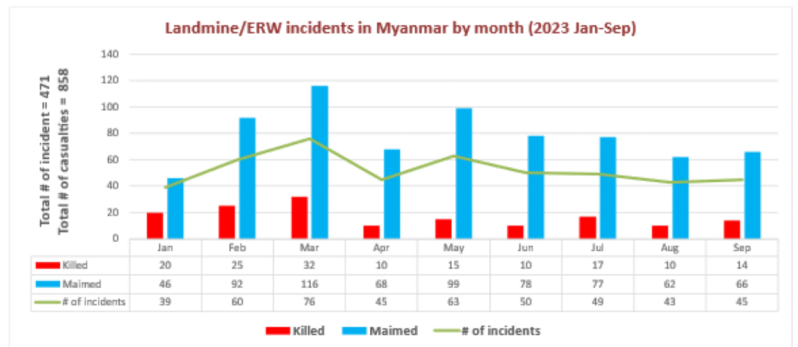


Landmines / ERW Incidents Information (2023)

Overview of incidents and casualties nationwide in 2023 (January - September)

Total incidents		471		
Total Victims		Killed	Maimed	Total
		153	705	858
Adult	Total Adult	107	564	671
	Male	76	372	448
	Female	31	192	223
Child	Total Child	46	141	187
	Male	40	97	137
	Female	6	44	50



Focus on the States/Region most affected by landmines/ERW in 2023 (January - September)

Sagaing Region (37% of total casualties)

Total incidents		156		
Total Victims		Killed	Maimed	Total
		46	268	314
Adult	Total Adult	31	230	261
	Male	18	145	163
	Female	13	85	98
Child	Total Child	15	38	53
	Male	12	23	35
	Female	3	15	18

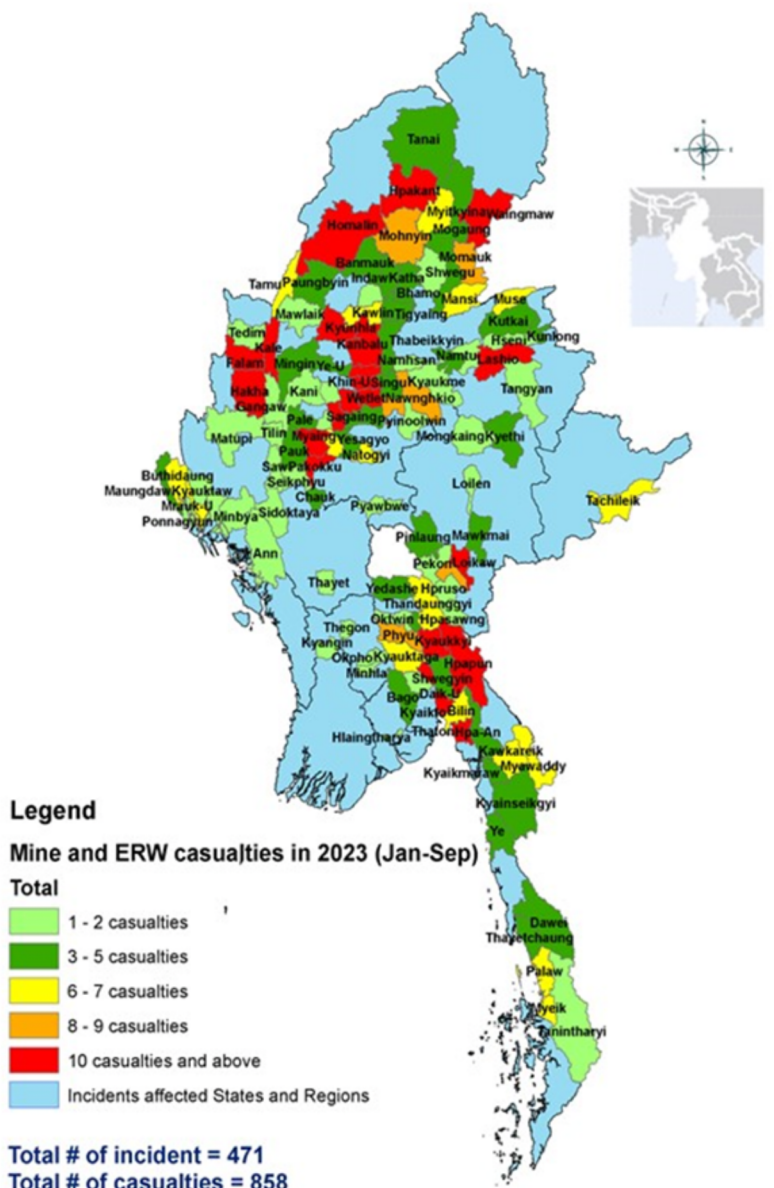
Incidents affected States/Regions and Townships in 2023

Shan State (12% of total casualties)

Total incidents		46		
Total Victims		Killed	Maimed	Total
		16	84	100
Adult	Total Adult	12	71	83
	Male	11	53	64
	Female	1	18	19
Child	Total Child	4	13	17
	Male	3	13	16
	Female	1	0	1

Bago Region (10% of total casualties)

Total incidents		43		
Total Victims		Killed	Maimed	Total
		17	71	88
Adult	Total Adult	12	57	69
	Male	8	38	46
	Female	4	19	23
Child	Total Child	5	14	19
	Male	5	11	16
	Female	0	3	3



226 other incidents resulting in 356 casualties (41% of total casualties) were also documented in Ayeyarwady, Chin, Kachin, Kayah, Kayin, Magway, Mandalay, Mon, Rakhine, Tanintharyi and Yangon during the reporting period. It is important to note that these figures only reflect civilian casualties.

For more information on Mine Action, contact mineaction@unicef.org