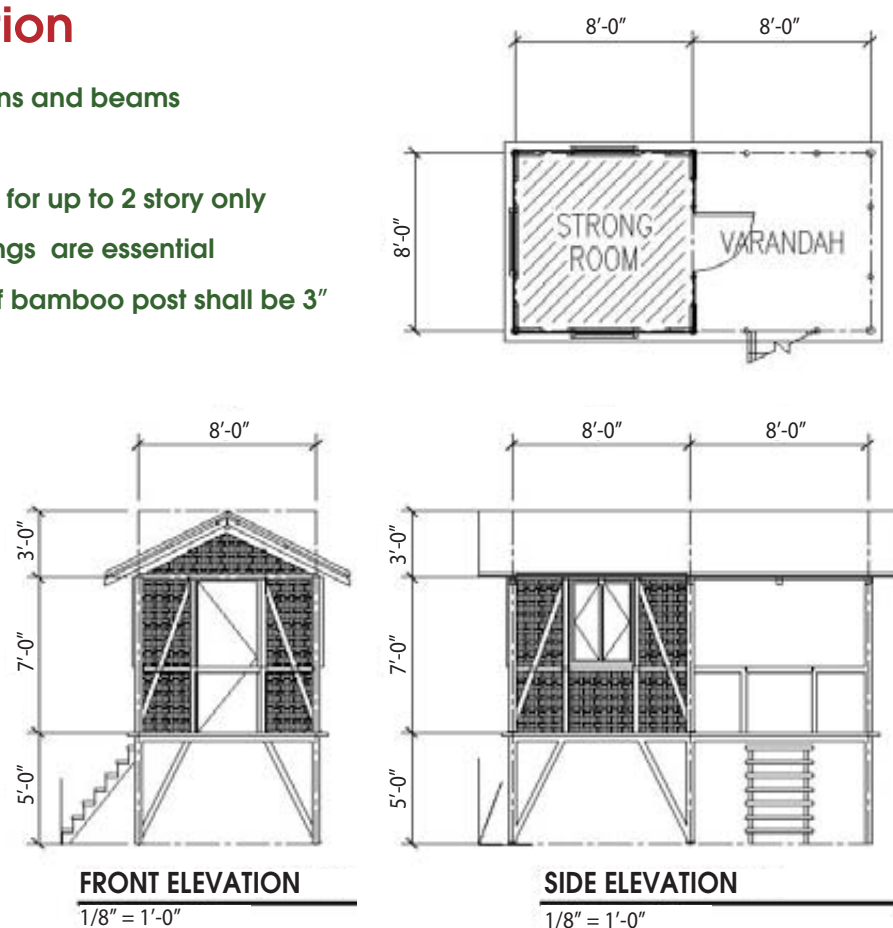


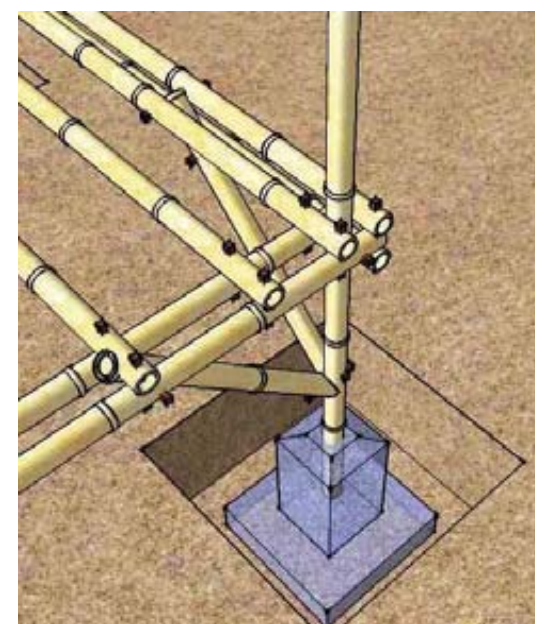
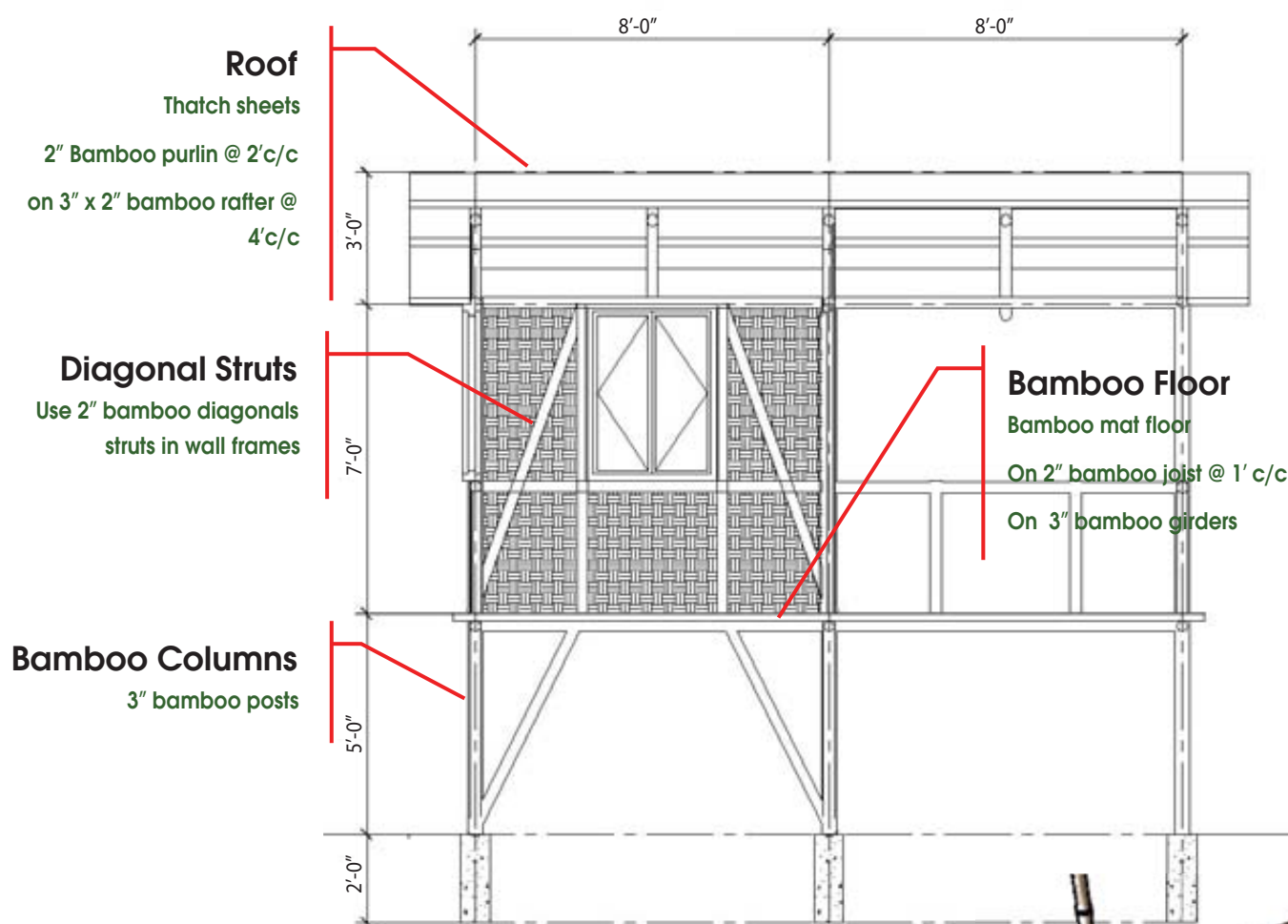
BUILDING BACK SAFER - BAMBOO SHELTER

Configuration

- Bamboo columns and beams
- Light structure
- Recommended for up to 2 story only
- Diagonal bracings are essential
- Minimum size of bamboo post shall be 3"

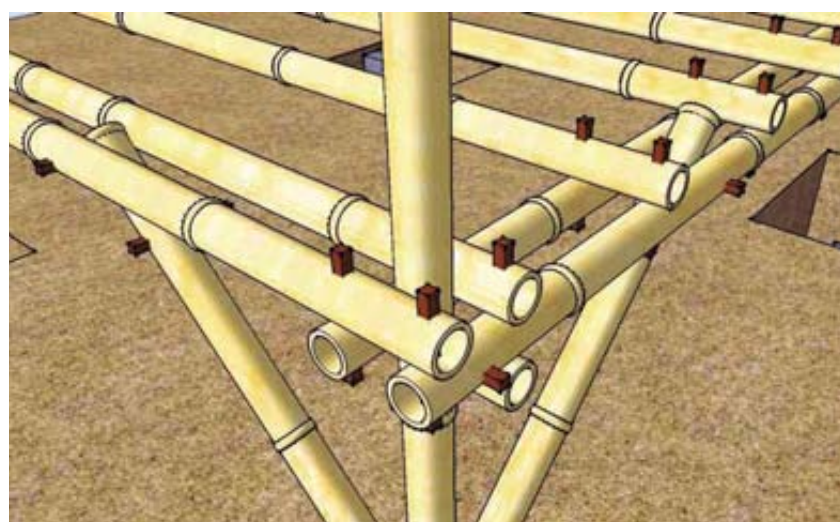


Construction Details



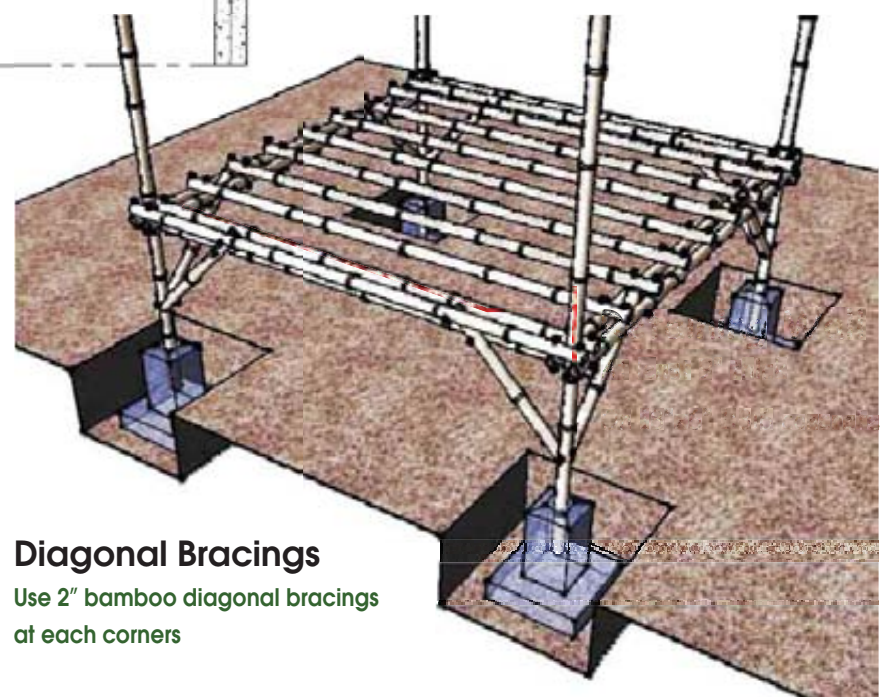
Bamboo post Footing

Bamboo post shall be embedded at least 9" in the concrete foundation



Bamboo Joints

Use bamboo dowels or nail at each joints and tie with GI wires.



Diagonal Bracings

Use 2" bamboo diagonal bracings at each corners