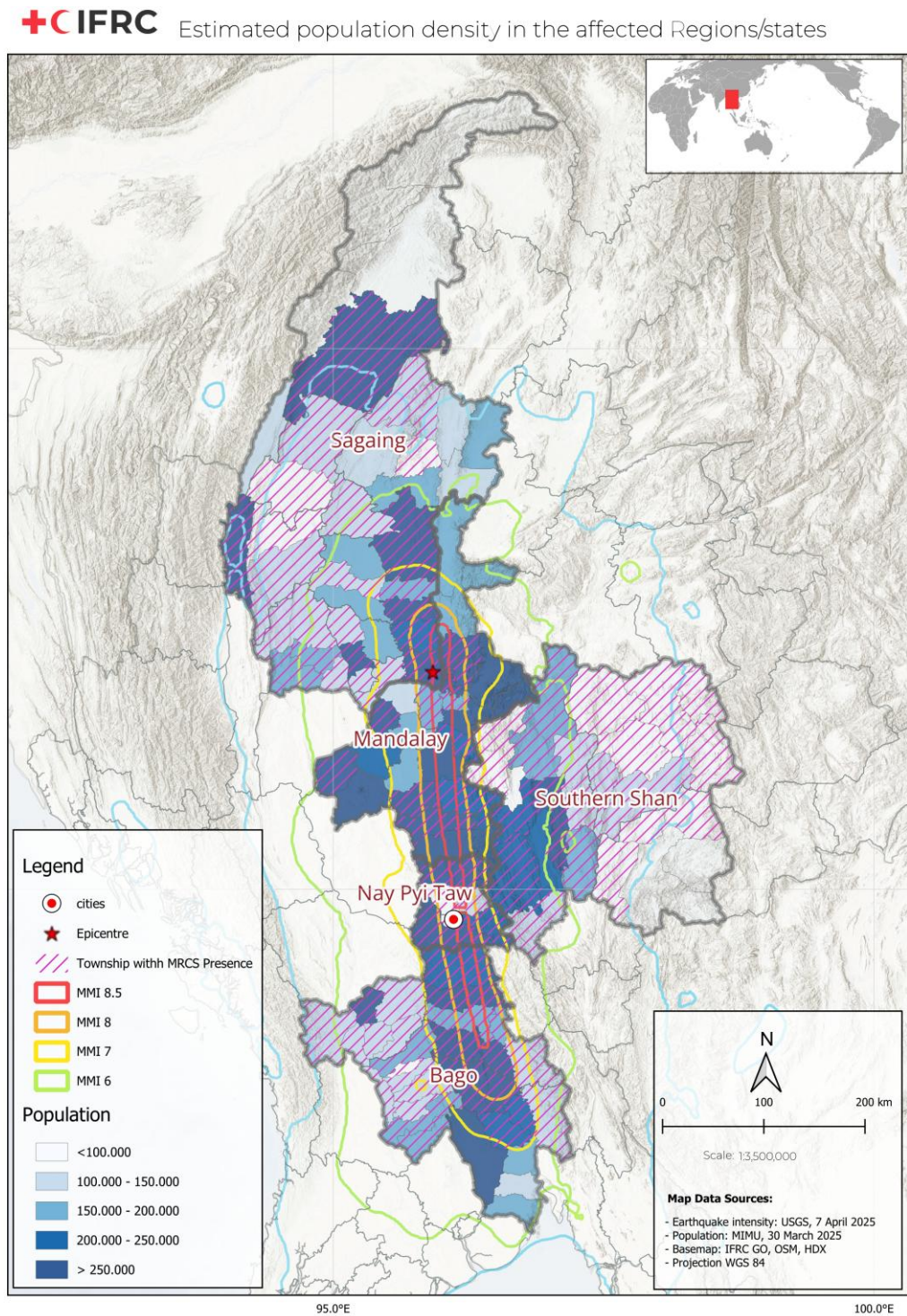


IFRC Disaster Snapshot #2

Earthquake | Myanmar



The IFRC has launched a CHF 100 million Emergency Appeal to assist a total of 100,000 people in five targeted states. The Operation Strategy for this operation was published on 9 April 2025. In response, MRCS has mobilized volunteers and is delivering health services, clean water, relief items, and emergency support across key states, with strong support from Partner National Societies and the IFRC. [All RCRC Movement personnel are encouraged to log in to IFRC GO for internal sitreps and other key information.](#)



Affected Population*	Deaths**	MRCS Volunteers Responding	Appeal (CHF)	DREF (CHF)	Targeted Population
17.2 M	3,564	498	100 M	2 M	100 K

* According to UNOCHA **According to official repots

Priority needs

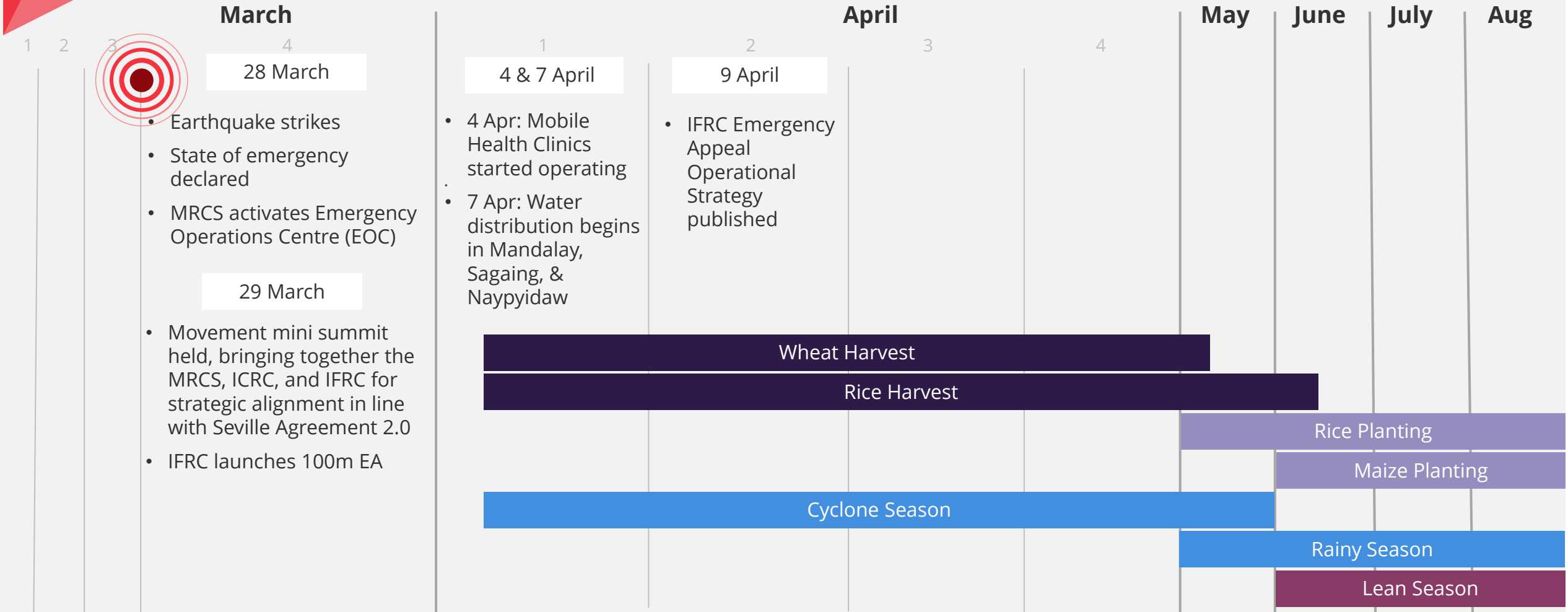
SHELTER
Emergency shelter for displaced families and transitional shelter solutions

HEALTH
Trauma care, blood transfusion supplies, and essential medicines

WASH
Access to clean water, sanitation facilities, and hygiene kits

LIVELIHOODS
Cash assistance to meet immediate needs and support recovery

Timeline









IFRC Disaster Snapshot #2

Earthquake | Myanmar




Myanmar Red Cross Society (MRCS) actions in Bago, Mandalay, Naypyidaw, Sagaing and Southern Shan

* MRCS actions as of 10 April 2025

-  **498** Red Cross Volunteers (RCVs) deployed alongside MRCS Headquarters and IFRC Network teams
-  **3** mobile health clinics, **1,905** people treated
-  Supported at least **1,000 people** through ongoing first aid, emergency ambulance transport and search and rescue services.
-  **3** water treatment units, each producing a minimum 5,000 liters of drinking water, reaching more than **22,000 people**.
-  Distribution of emergency relief items, reaching **1,656 households** (more than 7,400 people)
-  **Rapid Needs Assessments** conducted in coordination with partners

IFRC Network actions

* IFRC network actions as of 10 April 2025

-  Mobilized **15 Rapid Response personnel** to support operations; additional technical specialists deployed.
-  NFIs for **6,000 households** readied in Naypyidaw along with relief supplies for at least 3,000 households received from or pledged by regional National Societies including those of **China, Indonesia, Japan, Malaysia, Singapore, Thailand, and Vietnam** for dispatch to affected areas.
-  **Red Cross Society of China** has deployed teams specializing in search and rescue evacuation, medical assistance, and two water treatment unit to support MRCS in Mandalay.
-  90 water filters from the **Singapore Red Cross** received, with one unit installed in a monastery in Naypyidaw.
-  Consignments of additional relief items sufficient for at least **3,000 households** have been received in-country from the IFRC Regional Warehouse in Kuala Lumpur.
-  Cash contributions towards the IFRC Appeal have so far been recorded from **the British, Finnish, Japanese, Monaco, Singapore, and Slovenia Red Cross Societies** as well as the **Hong Kong Branch of the Red Cross Society of China**.

IFRC Disaster Snapshot #2

Earthquake | Myanmar



Challenges faced



INFRASTRUCTURE DAMAGE

Roads, and bridges severely impacted



EXTREME WEATHER

Heat exceeding 40°C and off-season rains complicate relief efforts



LOGISTICAL CONSTRAINTS

Telecommunication challenges and fuel shortages hinder coordination

Operational strategy (amount in CHF millions)

