

CCCM SITE MONITORING: Taung Paw Camp

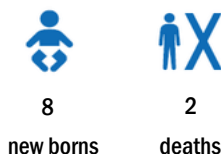
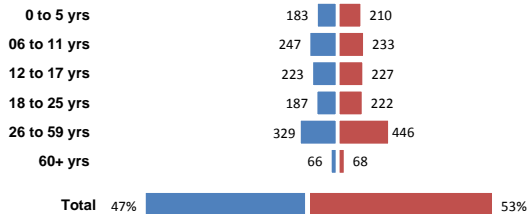
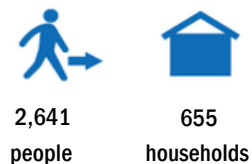
Township: Myebon (Rakhine, MYANMAR)

April-2018

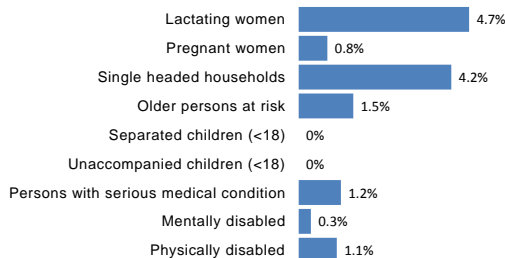
Geographic Data: Vil. Tract / Town : Ah Ngu

Village/Ward : Pyin Taw Che

Demographic data

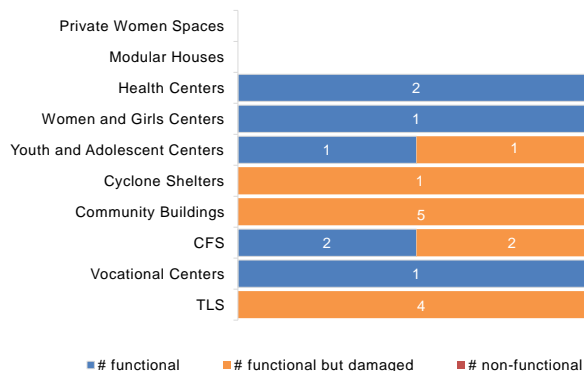


Vulnerabilities data

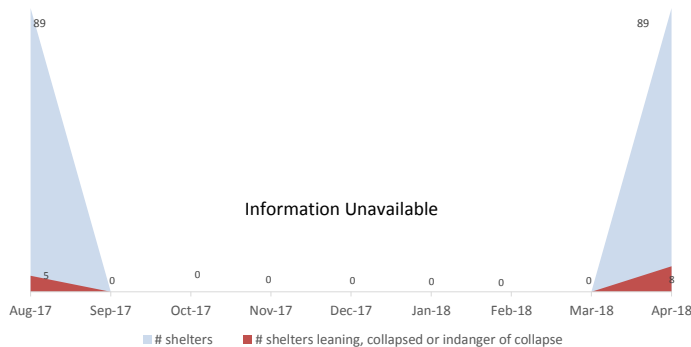


Camp Management or Focal Point Agency: RI

Community Infrastructure damage



Shelter rehabilitation and repair



Sector Overview



CCCM	# of coordinations meetings with CMCs	0
	# of meetings with service providers	1



Health	Health facility presence	Yes
	# of NGO clinics	1
	# of Government clinics	0
	IDPs access to nearby health facility	Yes

NFI

NFI	# of HHs receiving WaSH consumables (soap, towel)	0
	# of HHs receiving Sanitary Kits / Dignity Kits	0



Shelter	# of temporary shelters (8 – 10 units)	89
	# of informal / makeshift shelters	3
	Date of the last Shelter Cluster assessment	01-Apr-18

Functional Non-functional

	# Lightings at Latrines	0	0
	#Lighting at other areas of camps	0	0
WASH	# of Hand Pumps	0	0
	# of Ponds	2	4
	# of Latrines	197	0
	# of Solid Waste Management System	17	0



Service Delivery Actors in the Camp

