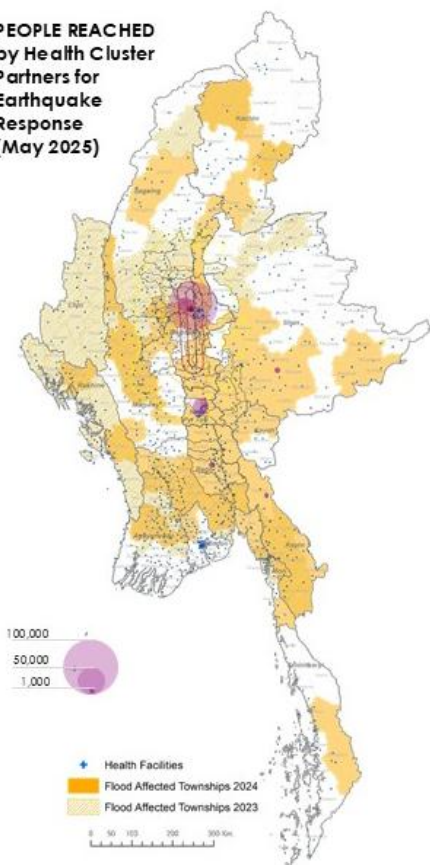


**PEOPLE REACHED
by Health Cluster
Partners for
Earthquake
Response
(May 2025)**



Highlights

- Two months after the devastating **earthquake**, 21 health partners managed to deliver health services to 165,411 people (37% of the target) in 48 out of 58 townships affected by the earthquake. Several mobile health teams were forced to cease operations as they were not provided with necessary approvals by the authorities, leaving some earthquake-affected populations with no access to health services.
- Despite sporadic cases of **Acute Watery Diarrhoea (AWD)** cases, no major disease outbreaks reported. Lack of a comprehensive surveillance system continues to severely impede rapid detection of outbreaks, with many outbreaks potentially occurring unreported.
- As part of **monsoon preparedness**, joint health and WASH AWD Action Plans are being reviewed to enhance **AWD Readiness**. Increase in **malaria** and **dengue** cases reported from areas with heavy **pre-monsoon rains**.
- Chronic low immunization coverage is posing a significant risk of outbreaks of vaccine-preventable diseases like **measles and polio**.
- Resurgence of **COVID-19** cases in neighbouring Thailand and India as proxy indicator of potential increase in cases in Myanmar, in view of low testing rate resulting in poor capacity to detect cases. Vaccines remain effective with current variants (NB.1.8.1 (XDV), LF.7, and LP.8.1, with lineage ties to JN.1), and existing COVID-19 guidance remains valid, available [here](#). **Health partners are asked to conduct COVID-19 testing using Rapid Diagnostics Tests.**

Health cluster action

Earthquake Response

- Out of the total of 165,411 people reached with health services in earthquake affected areas, the majority were in Mandalay (61%), followed by Nay Pyi Taw (19%) and Sagaing (17%). Most health partners were only allowed to operate in Mandalay.
- Health partners that were provided with approvals to continue delivering health services in earthquake affected areas, are planning to continue their operations up to July-August 2025.
- Mental health problems are normal after experiencing a traumatic event like an earthquake, and experiencing loss of livelihoods and loved ones. Health partners are asked to refer people in need of mental health support to specialised care.
- No data available on health facility functionality due to perceived sensitivities.

State/Region	# reached
Mandalay	100,673
Nay Pyi Taw	31,135
Sagaing	28,619
Shan (South)	3,281
Kayin	946
Bago (East)	757
Total	165,411

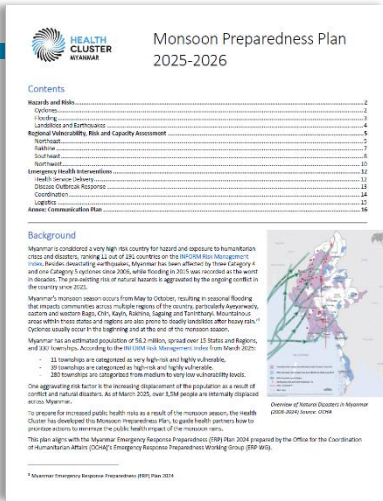


Mercy Malaysia's Emergency Medical Team (EMT) treated 150 patients per day in Kyaukse General Hospital in Mandalay

Monsoon Preparedness Plan 2025-26

Health Cluster issued its **Monsoon Preparedness Plan 2025-26** aimed at guiding health partners on specific preparedness interventions they should take. The plan focuses on public health risks limited to monsoon-related hazards.

Typically, the plan is updated on a yearly basis at national and sub-national level through interactive workshops in May, but these were not held because of the earthquake. Instead, joint health and WASH AWD Readiness workshops will be conducted on 2-6 June 2025, initiated by the WASH Cluster, in close collaboration with other relevant clusters like Nutrition, Protection, and Camp Management.



Attacks on Health Care

The number of deadly attacks on health care in Myanmar between 1 and 30 May 2025 as reported and verified through WHO's **Surveillance System for Attacks on Health Care (SSA)** is significantly higher as compared to previous years, with a total of 36 deaths reported in the first 5 months of 2025, as compared to 9 deaths in the same reporting period in 2024, and 10 in 2023.

As per data collected by **Insecurity Insight**, a total of 97 attacks on health care were reported in Myanmar between 1 and 30 May 2025, resulting in 17 deaths, as compared to 5 deaths in the same reporting period in 2024.

WHO's **Surveillance System for Attacks on Health Care (SSA):**

Insecurity Insight:

Annual data ⓘ					
Attacks		Deaths		Injuries	
2025	15	2025	36	2025	69
2024	31	2024	51	2024	101
2023	70	2023	14	2023	21



Mines Advisory Group (MAG) offering Explosive Ordnance Risk Education (EORE) Safety Briefings:

Stay Safe: Sign Up for MAG's EORE Safety Briefings

- Online
- Every 1st, 2nd and 3rd Tuesday of the month - 9:00 to 11:30 AM
- in Myanmar Language

Register here: Training Registration Form -သင်တန်းလျှောက်ထားရန် ဖောင်

Mine Action Victim Assistance

Myanmar is confirmed to have the **highest incident rates of landmine and other explosive ordnance casualties** in the world during 2023, with 1,052 casualties reported. Data from 2024 show a further increase of 1,082 casualties. Actual numbers are expected to be much higher. All of Myanmar's States and Regions are suspected to be contaminated.

To raise awareness about the risk of unexploded ordnances and landmines dislocated as a result of the earthquake, the **Mine Action Area of Responsibility** mapped earthquake affected townships with incidents of landmine and other explosive ordnances.

Health partners are asked to express their interest to become part of the **Mine Action Area of Responsibility** to ensure an increased number of survivors of explosive hazard accidents receive appropriate Victim Assistance.

Challenges

- **Access restrictions and data sensitivities** are severely impeding the Health Cluster's ability to share relevant data with partners, including available health facility functionality data, in spite of strict adherence to data sharing protocols.
- Dependence on local procurement of pharmaceuticals is **increasing the risk of poor-quality drugs** in the absence of a list of prequalified suppliers. Delays with market assessment of 'reliable suppliers' and Quality Assurance training using WHO HQ's Good Storage and Distribution Practices (GSDP) tools are debilitating the Health Cluster from supporting partners with this type of key information.

Next steps

- Hybrid review sessions of **joint health-WASH AWD Action Plans** to enhance readiness for AWD as part of monsoon preparedness on **2-6 June 2025** for Southeast (Hpa-An), Northeast (Myitkyina), Northwest (Mandalay) and Rakhine (Sittwe)
- Training for health cluster partners on **5W reporting**:
 - **4 June 2025** for Northwest Region (online)
 - **11 June 2025** for Kayah and Southern Shan in Taunggyi (in person)

From Framework to Field: Myanmar Earthquake Response

EMT EMERGENCY MEDICAL TEAMS GLOBAL MONTHLY CALL

FROM FRAMEWORK TO FIELD:
MYANMAR EARTHQUAKE RESPONSE

PERSPECTIVES FROM WHO, EMTS & RESPONSE PARTNERS ON
COORDINATION & LESSONS FROM THE FIELD.

03 JUNE 2025
10:00-11:30 CEST

Scan QR code to
Register

<https://extranet.who.int/emt/emteams@who.int>

World Health Organization

- 📅 Tuesday, 3 June 2025
- 🕒 10:00–11:30 CEST / 14:30–16:00 MMT
- 📍 Microsoft Teams | Registration required

👉 Register here and share your questions in advance
<https://lnkd.in/eU2MYPnJ>

Health Cluster Donors

Myanmar Humanitarian Fund (MHF), European Civil Protection and Humanitarian Aid Operations (ECHO), European Union (EU), Global Alliance for Vaccines and Immunisation (Gavi), Italian Government, Japan Government, Korea International Cooperation Agency (KOICA), and the United Kingdom's Foreign, Commonwealth and Development Office (FCDO)