

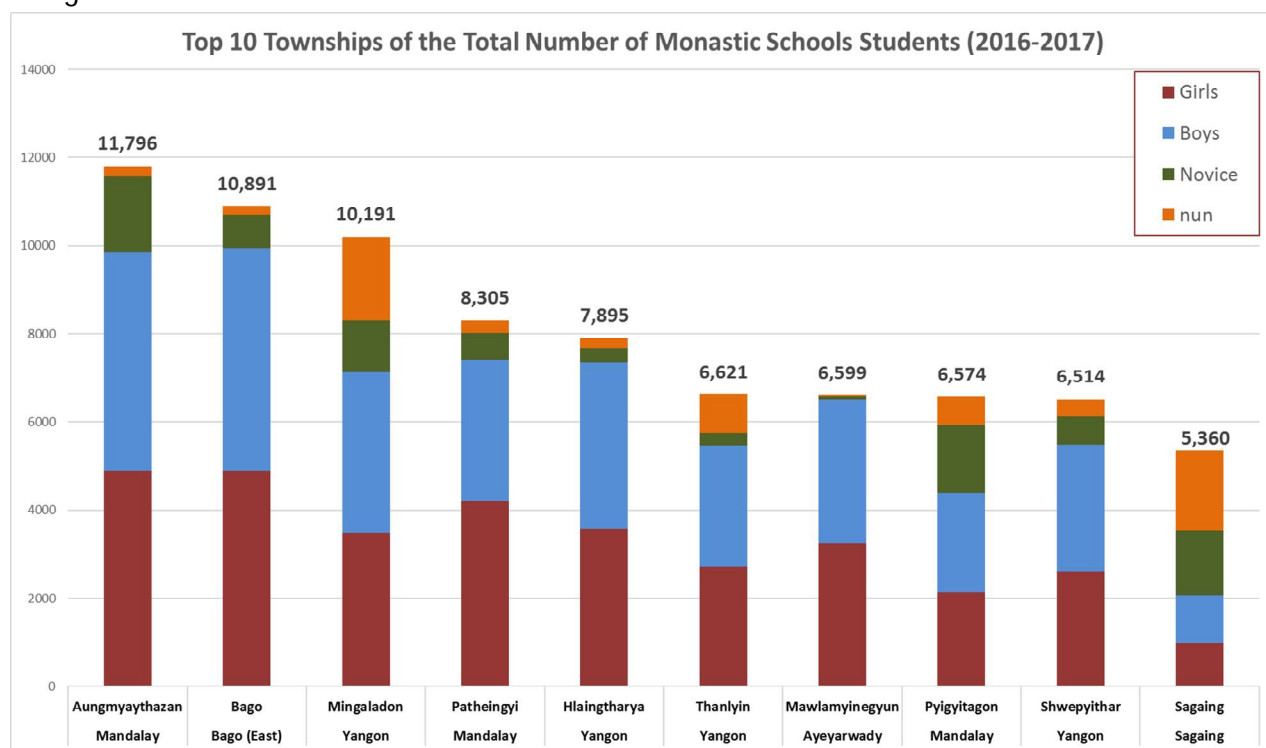
Monastic Education in Myanmar: Trends over the 5 year period from 2012-13 to 2016-17¹

MIMU has produced two Monastic Education Infographics over the period 2012/2017 based on data shared by the Ministry of Religious Affairs. These show, for each separate year:

- The relative concentration of Monastic schools by State/Region and by Township (where there are more/less)
- The number and type of schools (primary, post-primary, middle or high schools)
- The number and type of students (novices, nuns, or other boys and girls)

Using this data we can identify some key trends over this five-year period – these are noted below and would benefit from further sectoral analysis to explore the implications of the changing situation:

- **303,061 students attended registered monastic schools across Myanmar in 2016.** 12% were young novices and nuns, and 88% were boys and girls who are not part of the monastic order. There are marginally more boys than girls (51:49), and many more novices than nuns (65:35). The vast majority of children in monastic education are in the primary school levels between grades 1-4 (72%). Yangon and Mandalay account for 44% of the total number of children in monastic education as reported to the Ministry of Religious Affairs.

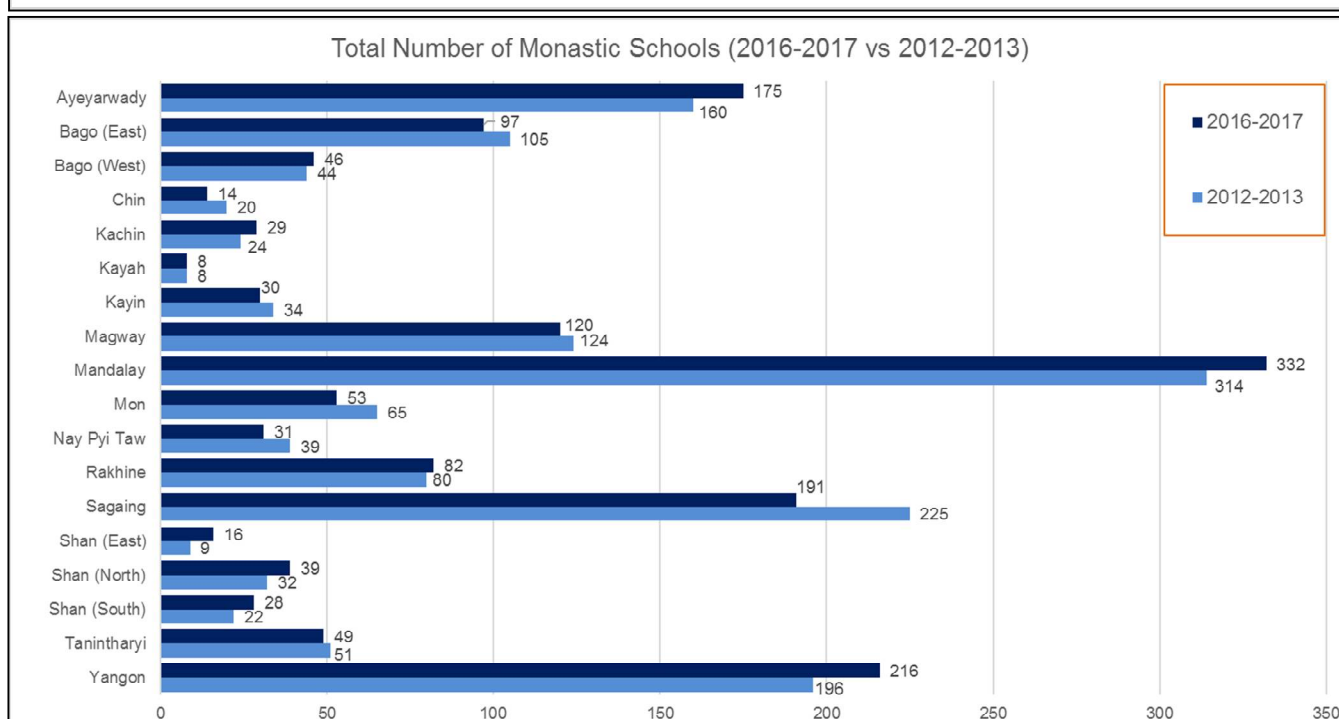
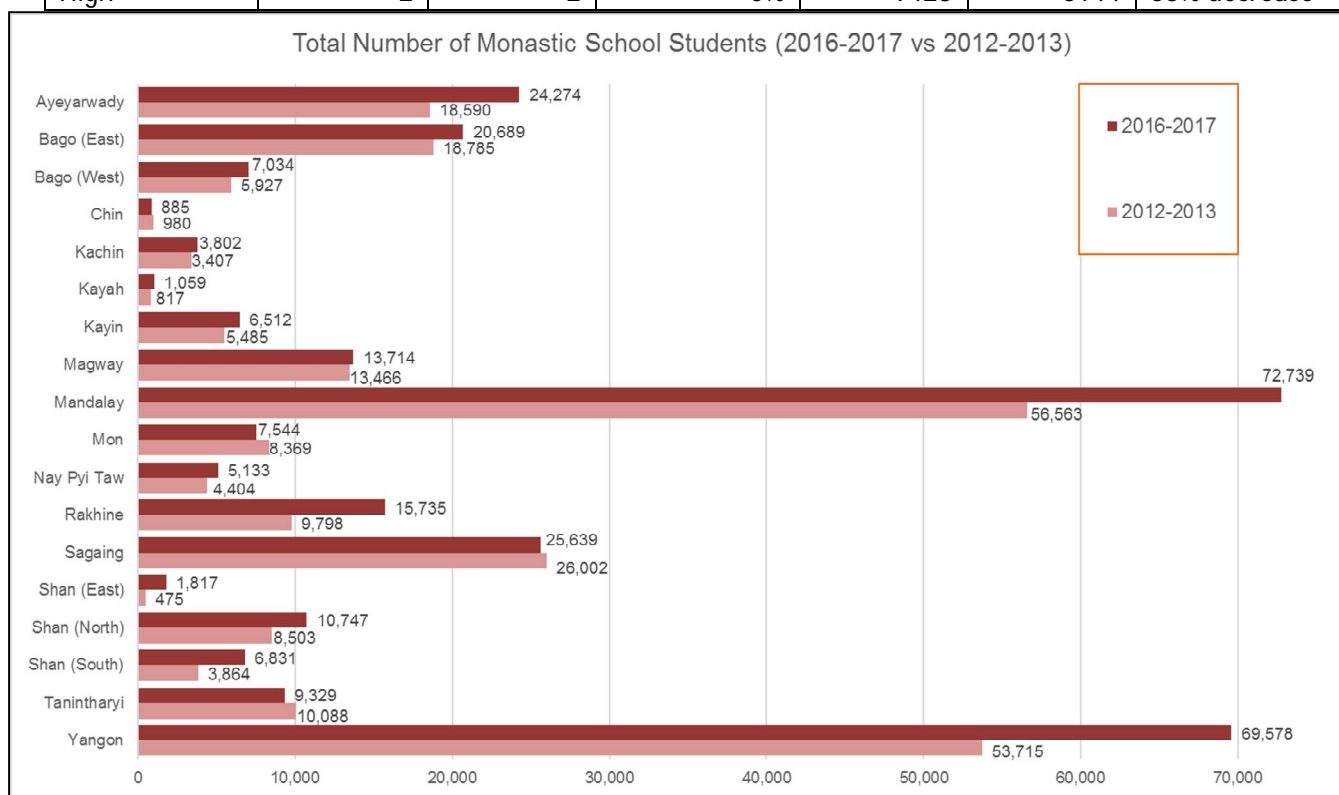


- **There has been a 22% increase in the number of children recorded as enrolled in monastic education over the period 2012 to 2017 (53,823 more children).** This increase has been mainly in Shan (East) (283% - from 475 children reportedly enrolled in 2012 to 1,817 in 2016), followed by Shan (South) (77%) and Rakhine (61%).

¹ Based on data from the Ministry of Religious Affairs, 2012-2013 and 2016-2017

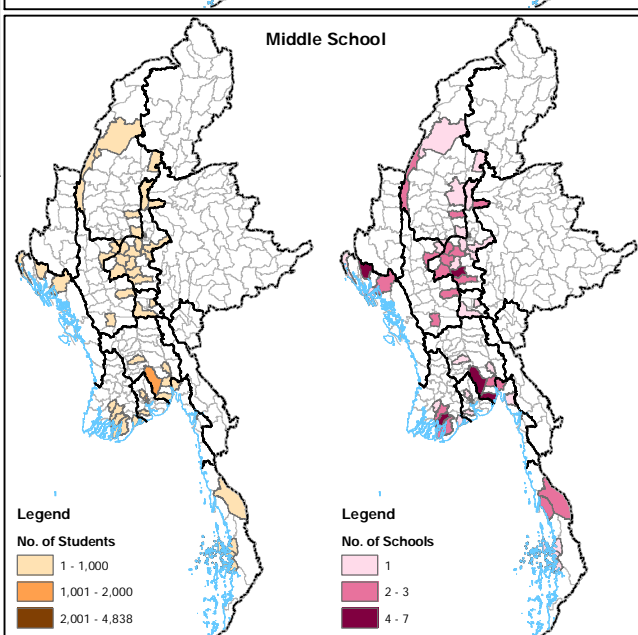
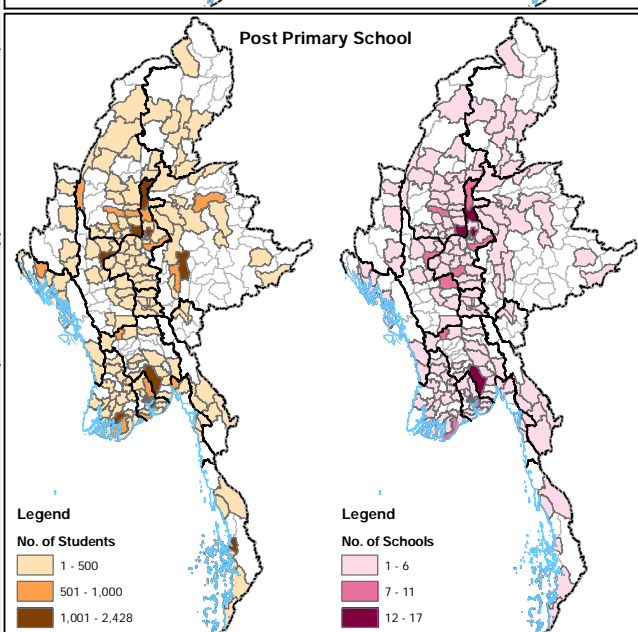
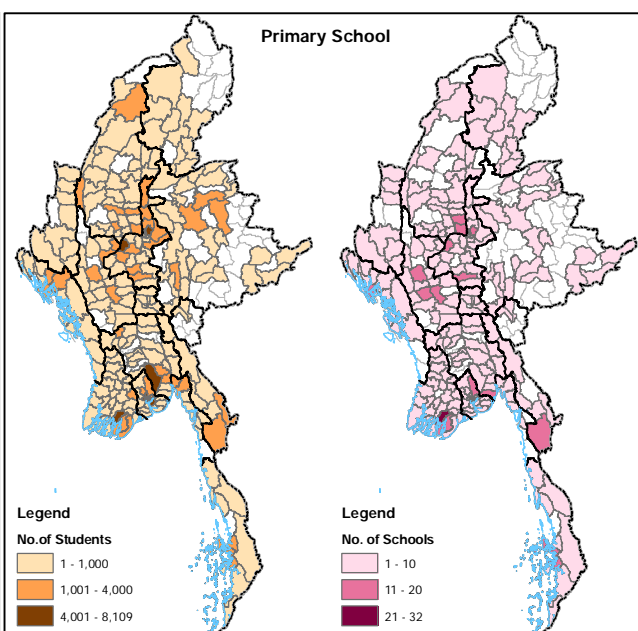
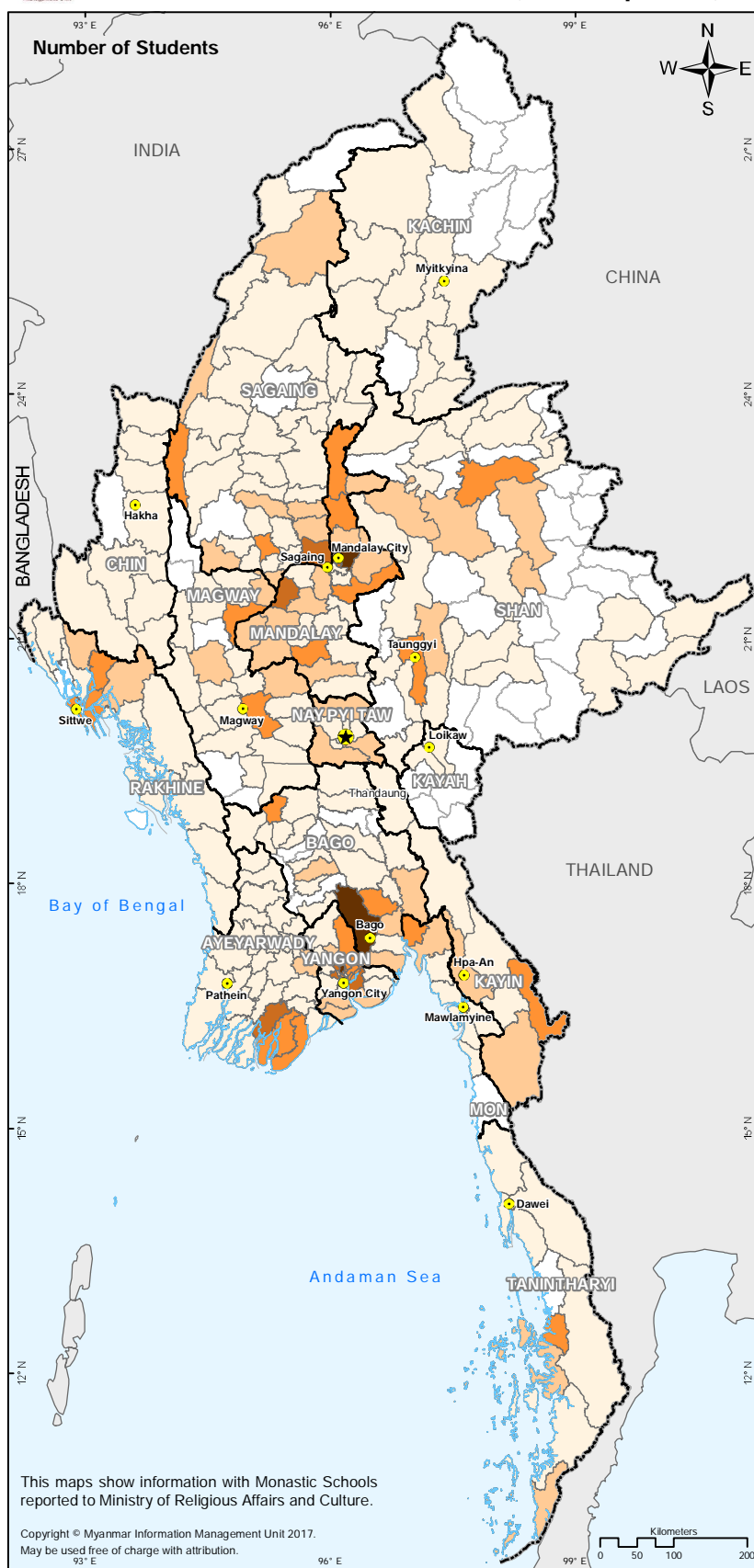
- Based on this data, the number of children in monastic education has decreased in 4 states/regions, most in Mon and Chin States (10% in each), followed by Tanintharyi (8%) and Sagaing Regions (1%).

Level of School	Number of Schools			Number of Students		
	2012-2013	2016-2017	Changes	2012-2013	2016-2017	Changes
Primary	1105	932	19% decrease	101484	219522	54% increase
Post Primary	333	518	36% increase	95851	57176	68% decrease
Middle	112	104	8% decrease	42480	20219	110% decrease
High	2	2	0%	9423	6144	53% decrease









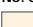






No. of Schools and Students in Monastic Education in Myanmar

(Township Level) 2016-2017



No. of High Schools = 2 and No. of Students in High Schools = 6,144 in Mandalay Region.

Legend

	Capital
	State/Region Capital
	Shore and Stream
	Township Boundary
	State/Region Boundary
	International Boundary
	No. of Students
	1 - 1,000
	1,001 - 2,000
	2,001 - 5,000
	5,001 - 8,000
	8,001 - 11,796
	No Monastic Education Reported

Map ID: MIMU962v06

Creation Date: 22 February 2017.A3

Projection/Datum: Geographic/WGS84

Data Sources: Ministry of Religious Affairs and Culture

Base Map: MIMU

Boundaries: WFP/MIMU

Place names: Ministry of Home Affairs (GAD)

translated by MIMU

Map produced by the MIMU - info.mimu@undp.org; www.themimu.info