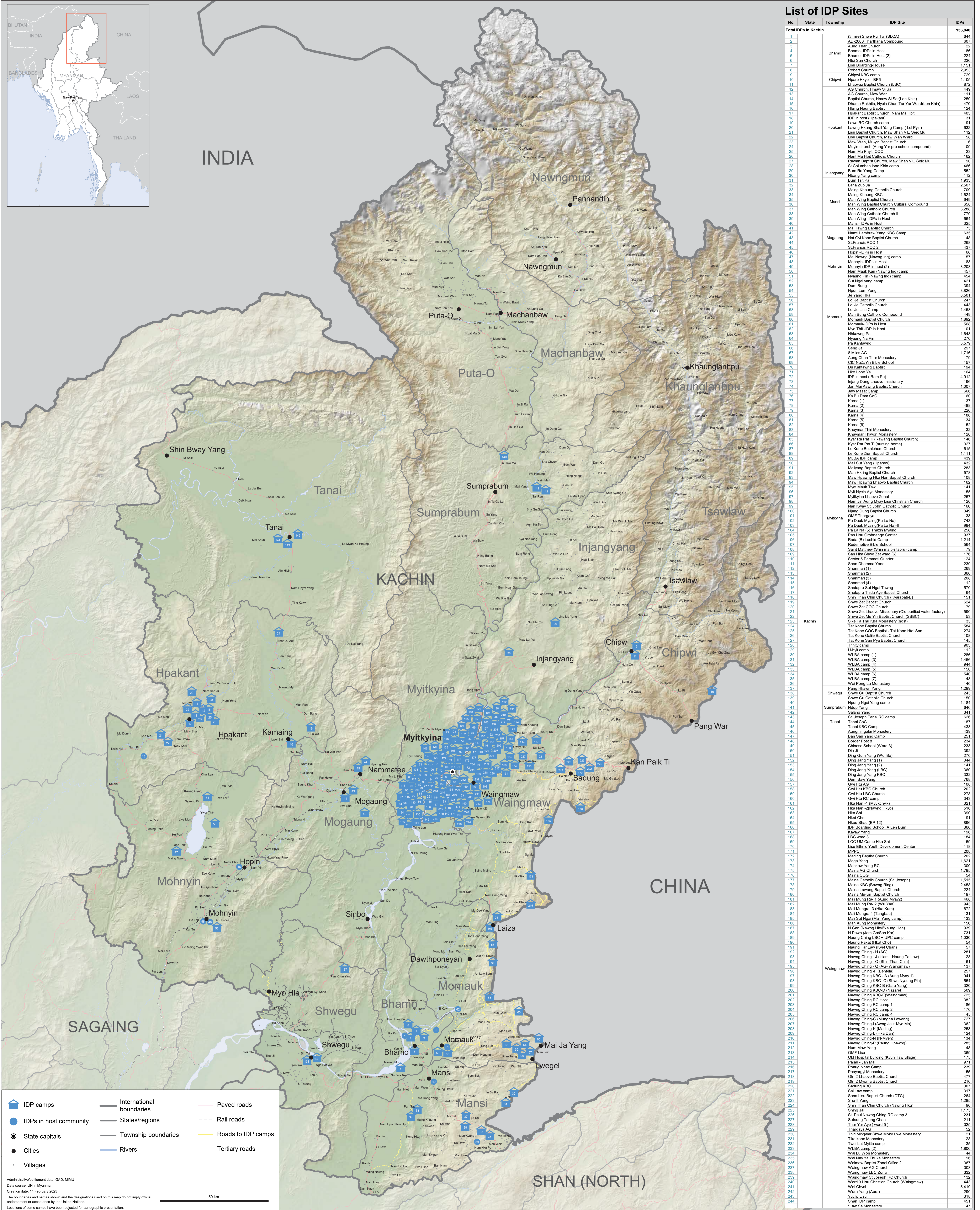




MYANMAR

IDP Sites in Kachin State

As of 30 November 2024



List of IDP Sites

No.	State	Township	IDP Site	IDPs
Total IDPs in Kachin 136,840				
1	Bhamo	Bhamo	(3 nbs) Shwe Pyi Tar (SLCA)	644
2			AD-2003 Thantana Compound	607
3			Aung Thar Church	22
4			Bhamo- IDPs in Host	86
5			Bhamo- IDPs in Host (2)	224
6			Hoi San Church	236
7			Liau Boarding-House	1,151
8			Robert Church	2,953
9			Chipwi KBC camp	729
10			Hpaare Hyer - BPS	1,105
11			Lhaovo Baptist Church (LBC)	872
12			AG Church, Hmaw Si Sa	449
13			Baptist Church, Maw Wan	114
14			Baptist Church, Hmaw Si Sa (Lon Khin)	250
15			Dhama Rakhta, Nyein Chan Tar Yar Ward(Lon Khin)	470
16			Hing Naung Baptist	124
17			Hpakant Baptist Church, Nam Ma Hpat	403
18			IDP in host (Hpakant)	31
19			Lawa RC Church camp	191
20			Lawang Hkang Shat Yang Camp (Lei Pyn)	632
21			Liau Baptist Church, Maw Shan VII, Seik Mu	112
22			Liau Baptist Church, Maw Wan Ward	58
23			Maw Wan, Muyen Baptist Church	6
24			Muyen church (Aung Yar pre-school compound)	109
25	Nam Ma Phye, COC	23		
26	Nant Ma Hpat Catholic Church	162		
27	Rawan Baptist Church, Maw Shan VII, Seik Mu	90		
28	St Columban Iene Khe camp	466		
29	Bum Ra Yang Camp	552		
30	Nyang Yang camp	112		
31	Bum Tai Pa	1,933		
32	Lana Zup Ja	2,507		
33	Maing Khaung Catholic Church	709		
34	Maing Khaung KBC	1,624		
35	Man Wing Baptist Church	649		
36	Man Wing Baptist Church Cultural Compound	658		
37	Man Wing Catholic Church	3,288		
38	Man Wing Catholic Church II	779		
39	Man Wing IDPs in Host	664		
40	Mansi- IDPs in Host	325		
41	Ma Hawing Baptist Church	75		
42	Nant Lamraw Yang KBC Camp	535		
43	Nat Gyi Kone Baptist Church	48		
44	St Francis RCC 1	289		
45	St Francis RCC 2	437		
46	Hopin IDPs in Host	86		
47	Mai Naung (Nawang Ing) camp	57		
48	Moeyin IDPs in Host	66		
49	Mohyin IDP in host (2)	3,203		
50	Nam Maung Kan (Nawang Ing) camp	457		
51	Nyauing Pa (Nawang Ing) camp	454		
52	Sui Ngai yang camp	421		
53	Dum Bang	394		
54	Houn Lum Yang	3,826		
55	Je Yang Hka	8,501		
56	Loi Je Baptist Church	247		
57	Loi Je Catholic Church	443		
58	Loi Je Liu Camp	1,438		
59	Man Bung Catholic Compound	449		
60	Momaux Baptist Church	1,892		
61	Momaux IDPs in Host	101		
62	Mwo Thi IDP in Host	568		
63	Nikawng Pa	1,648		
64	Nyauing Na Pin	270		
65	Pa Kathawng	3,579		
66	Seng Ja	297		
67	St Miles AG	1,716		
68	Aung Chan Thar Monastery	179		
69	CIC Na Za Yin Bible School	157		
70	Du Kathawng Baptist	194		
71	Hko Lone Ye	164		
72	IDP in host (Ram Pu)	4,912		
73	Inyang Dzung Lhaovo missionary	196		
74	Jan Mai Kawng Baptist Church	1,007		
75	Jan Mbat Camp	666		
76	Ka Bu Dam COC	60		
77	Kama (1)	137		
78	Kama (2)	488		
79	Kama (3)	226		
80	Kama (4)	186		
81	Kama (5)	134		
82	Kama (6)	62		
83	Khamyar Thai Monastery	32		
84	Khamyar Thawon Monastery	120		
85	Kyar Ra Pat Ti (Rawang Baptist Church)	146		
86	Kyar Ra Pat Ti (nursing home)	327		
87	Le Kone Bethlehem Church	615		
88	Le Kone Zun Baptist Church	1,111		
89	MLBA IDP camp	439		
90	Mai Sui Yang Hpaung	432		
91	Malyang Baptist Church	283		
92	Man Hkang Baptist Church	578		
93	Maw Hpaung Hka Nain Baptist Church	108		
94	Maw Hpaung Lhaovo Baptist Church	162		
95	Myat Maik Taung	56		
96	Moi Nyein Aye Monastery	127		
97	Myikyna Lhaovo Zonal	250		
98	Nam An Aung Mye Lhaovo Christian Church	120		
99	Nan Kway St. John Catholic Church	160		
100	Nyang Dzung Baptist Church	349		
101	OMF Thawng	133		
102	Pa Daik Myaing(Pa La Na)	743		
103	Pa Daik Myaing(Pa La Na) II	994		
104	Pa La Na (6) Thawng Myaing	298		
105	Pan Liu Orphanage Center	837		
106	Rada (B) Lachao Camp	1,214		
107	Redemptive Bible School	964		
108	Saint Matthew (Shan ma Isatpan) camp	79		
109	San Hsa Shwe Zet ward (6)	176		
110	Sector 3 Panmali Quarter	124		
111	Shan Dhamma Yone	239		
112	Shannar (1)	209		
113	Shannar (2)	360		
114	Shannar (3)	208		
115	Shannar (4)	112		
116	Shatsagu Sui Ngai Yang	570		
117	Shatsagu Thida Aye Baptist Church	64		
118	Shin Than Chan Church (Kyarap-8)	158		
119	Shwe Zet Baptist Church	624		
120	Shwe Zet COC Church	73		
121	Shwe Zet Lhaovo Missionary (OMI purified water factory)	590		
122	Shwe Zet Mu Yin Baptist Church (SBBC)	79		
123	Sika Ta Thu Kha Monastery (host)	54		
124	Tat Kone Baptist Church	384		
125	Tat Kone COC Baptist - Tat Kone Hoi San	274		
126	Tat Kone Galle Baptist Church	108		
127	Tat Kone San Eye Baptist Church	145		
128	Trinity camp	903		
129	Uybat camp	112		
130	W.LBA camp (1)	1,456		
131	W.LBA camp (3)	1,456		
132	W.LBA camp (4)	944		
133	W.LBA camp (5)	150		
134	W.LBA camp (6)	540		
135	W.LBA camp (7)	148		
136	Wai Pong La Monastery	140		
137	Pang Hkawn Yang	1,299		
138	Shwe Gu Baptist Church	243		
139	Shwe Gu Catholic Church	150		
140	Hingng Ngai Yang camp	1,184		
141	Nasap Yang	546		
142	Saling Yang	341		
143	St Joseph Tanai RC camp	626		
144	Tanai COC	187		
145	Tanai KBC Camp	433		
146	Aungmyethazan Monastery	239		
147	Ban Shan Yang Camp	451		
148	Border Post 8	234		
149	Chinese School (Ward 3)	233		
150	Di J	392		
151	Ding Gum Yang (Woi Ba)	270		
152	Ding Jang Yang (1)	344		
153	Ding Jang Yang (2)	141		
154	Ding Jang Yang (LBC)	360		
155	Ding Jang Yang KBC	332		
156	Dum Baw Yang	768		
157	Gwi Hui AG	108		
158	Gwi Hui KBC Church	292		
159	Gwi Hui LBC Church	278		
160	Gwi Hui RC camp	343		
161	Hka Nan -1 (Myakkyik)	321		
162	Hka Nan -2(Nawang Hkyo)	516		
163	Hsat Cho	163		
164	Hsat Cho	191		
165	Hwa Shau (BP 12)	896		
166	IDP Boarding School, A Len Bum	366		
167	Kayaw Yang	196		
168	LBC ward 3	184		
169	LCC LM camp Hka Shi	59		
170	Liu Ethnic Youth Development Center	118		
171	MPPC	202		
172	Maing Baptist Church	292		
173	Maga Yang	1,621		
174	Mahkaw Yang RC	300		
175	Maina AG Church	1,795		
176	Maina COG	54		
177	Maina Catholic Church (St Joseph)	1,515		
178	Maina COG (Bawng Rin)	2,458		
179	Maina Lawang Baptist Church	224		
180	Maina Muyen Baptist Church	197		
181	Mai Mung Ra-1 (Aung Myay2)	488		
182	Mai Mung Ra-2 (Wu Yan)	943		
183	Mai Mung Ra-3 (Hka Kung)	672		
184	Mai Mung Ra 4 (Tangbau)	131		
185	Mai Sui Ngai (Mali Yang camp)	133		
186	Nam Aung Monastery	156		
187	N Gan (Nawang Hky/Nawang Hee)	939		
188	N Pawn (Jam Ga San Kar)	731		
189	Nawang Chng LBC + UPC camp	1,030		
190	Nawang Pakat (Hkat Cho)	54		
191	Nawang Tar Law (Kyet Chan)	51		
192	Nawang Chng - H (AG)	281		
193	Nawang Chng - J (Islam - Nawang Ta Law)	128		
194	Nawang Chng - O (Shin Than Chin)	81		
195	Nawang Chng - Q (AG - Wangmaw)	137		
196	Nawang Chng - F (Bhehla)	257		
197	Nawang Chng KBC - A (Aung Myay 1)	197		
198	Nawang Chng KBC - C (Shwe Nyauing Pin)	554		
199	Nawang Chng KBC-B (Gara Yang)	320		
200	Nawang Chng KBC-D (Hawant)	509		
201	Nawang Chng KBC-E(Wangmaw)	725		
202	Nawang Chng RC Host	382		
203	Nawang Chng RC camp 1	186		
204	Nawang Chng RC camp 2	170		
205	Nawang Chng RC camp 4	45		
206	Nawang Chng-G (Mungna Lawang)	727		
207	Nawang Chng-H (Aung Ja + Myo Ma)	362		
208	Nawang Chng-I (Madang)	253		
209	Nawang Chng-J (Hsa Daw)	124		
210	Nawang Chng-N (N-Myen)	134		
211	Nawang Chng-P (Puang Hpaung)	285		
212	Nam New Yang	46		
213	OMF Liu	369		
214	Old Hospital building (Kyun Tat village)	175		
215	Palau - Jem Ma	971		
216	Phaung Nhsae Camp	239		
217	Phayagyi Monastery	55		
218	QF - 2 Lhaovo Baptist Church	477		
219	QF - 2 Myona Baptist Church	210		
220	Saung KBC	307		
221	Sai Law camp	317		
222	Sana Liu Baptist Church (DTC)	284		
223	Shan Yang	1,285		
224	Shin Than Chan Church (Nawang Hku)	96		
225	Shing Jai	1,175		
226	St. Paul Nawang Chng RC camp 3	231		
227	Sutaung Taung Chae	211		
228	Thar Yar Aye (Ward 5)	325		
229	Thawng AG	52		
230	Thi Minglar Shwe Moke Lwe Monastery	211		
231	Thi Kone Monastery	28		
232	Twel Lat Myta camp	135		
233	W.LBA camp (2)	1,806		
234	Wai La Wun Monastery	44		
235	Wai Nye Ya Thuka Monastery	96		
236	Wangmaw Baptist Zonal Office 2	387		
237	Wangmaw AG Church	337		
238	Wangmaw LBC Zonal	332		
239	Wangmaw St Joseph RC Church	132		
240	Ward 3 Lhaovo Christian Church (Wangmaw)	443		
241	Woi Chya	5,419		
242	Wura Yang (Aua)	290		
243	Yucip Liu	316		
244	Shan IDP camp	451		
	*Law Sa Monastery	47		

Legend:

- IDP camps (Blue house icon)
- IDPs in host community (Blue circle icon)
- State capitals (Black circle icon)
- Cities (Black dot icon)
- Villages (Small black dot icon)
- International boundaries (Thick black line)
- States/regions (Thin black line)
- Township boundaries (Dashed black line)
- Rivers (Blue line)
- Paved roads (Red line)
- Rail roads (Black line with cross-ticks)
- Roads to IDP camps (Yellow line)
- Tertiary roads (Grey line)

Administrative/settlement data: GAD, MMU
 Data source: UN in Myanmar
 Creation date: 14 February 2025
 The boundaries and names shown and the designations used on this map do not imply official endorsement or acceptance by the United Nations.
 Locations of some camps have been adjusted for cartographic presentation.

50 km

* Location not confirmed