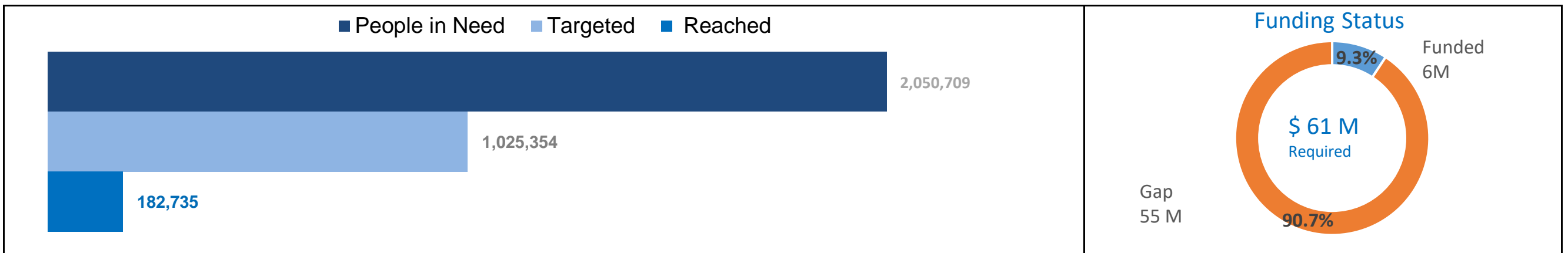




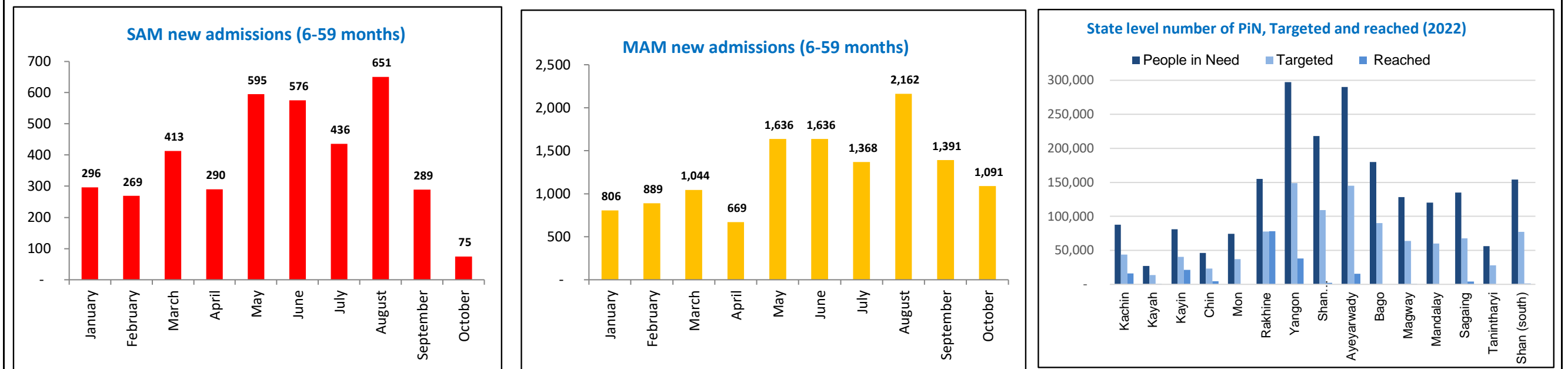
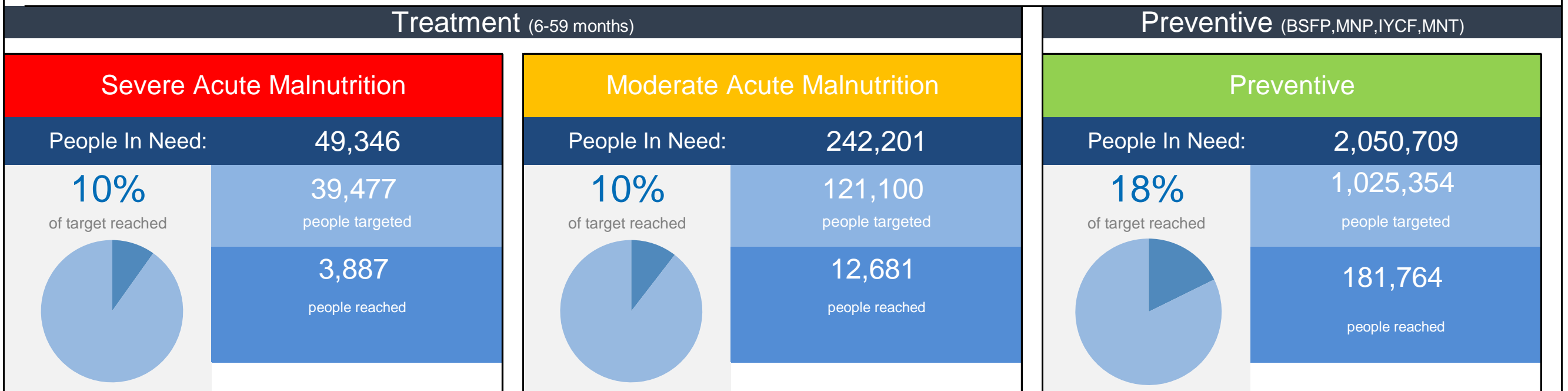
CLUSTER OBJECTIVES

As per the HRP

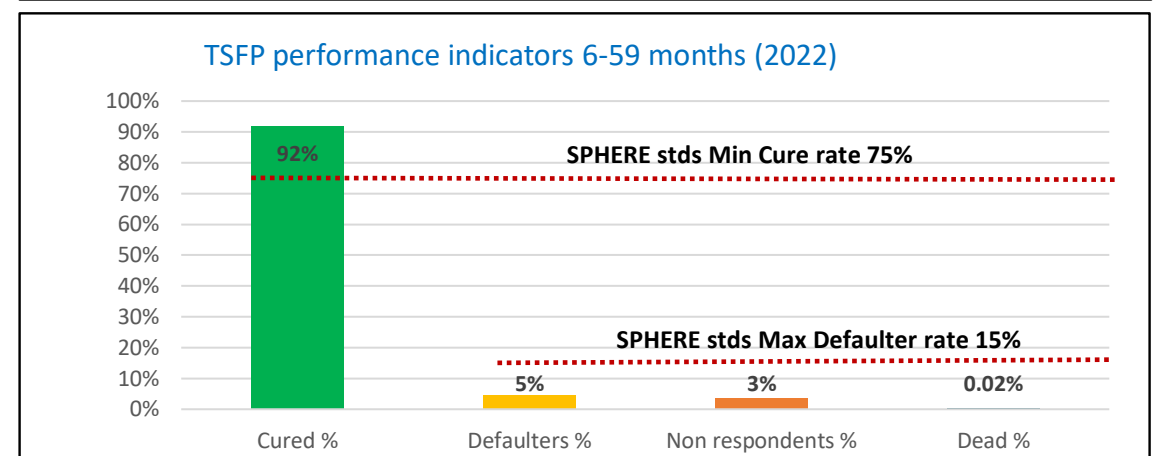
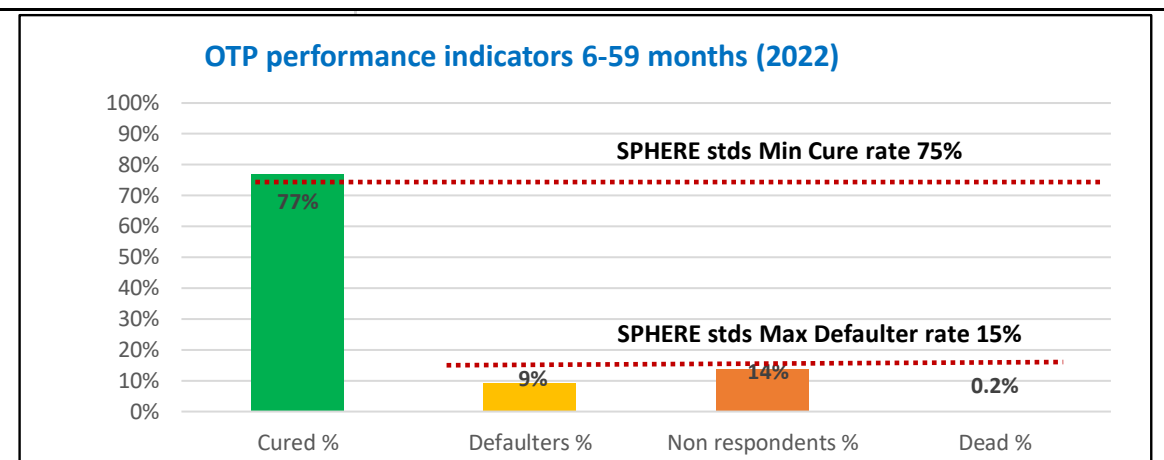
- 1 Specific Objective 1: Children and women with acute malnutrition access appropriate management services.
- 2 Specific objective 2: Nutritionally vulnerable children and women access preventivenutrition-specific services.



Nutrition Response is Broken Down into Treatment and Preventive Response



| | | | |
|----------------------|--------|----------------------|--------|
| MNT PLW Reached | 42909 | MNP 6-59 Reached | 109160 |
| MNT PLW Target | 363835 | MNP 6-59 Target | 661519 |
| Percentage to target | 12% | Percentage to target | 17% |
| BSFP PLW Reached | 16880 | BSFP 6-59 Reached | 58247 |
| BSFP PLW Target | 70046 | BSFP 6-59 Target | 117155 |
| Percentage to target | 24% | Percentage to target | 50% |
| IYCF PLW Reached | 56268 | TSFP PLW Reached | 3255 |
| IYCF PLW Target | 363835 | TSFP PLW Target | 16217 |
| Percentage to target | 15% | Percentage to target | 20% |



Reporting Partners (40): ACF, AYO, CARE, CDN, CERA, CPI, CSI, ENDO, HDI, HKI, HPA, IPP, IRC, KBC, KMSS, MAM, MHAA, MHDO, MM, MSF, Nyein, PCM, PDN, PHCD, PIN, PLAN, PSSAG, PUI, RI, SCI, SNF, SSSCB, STH, TDH, TSD, WCM, WFP, WHH, WPN, WV, UNICEF