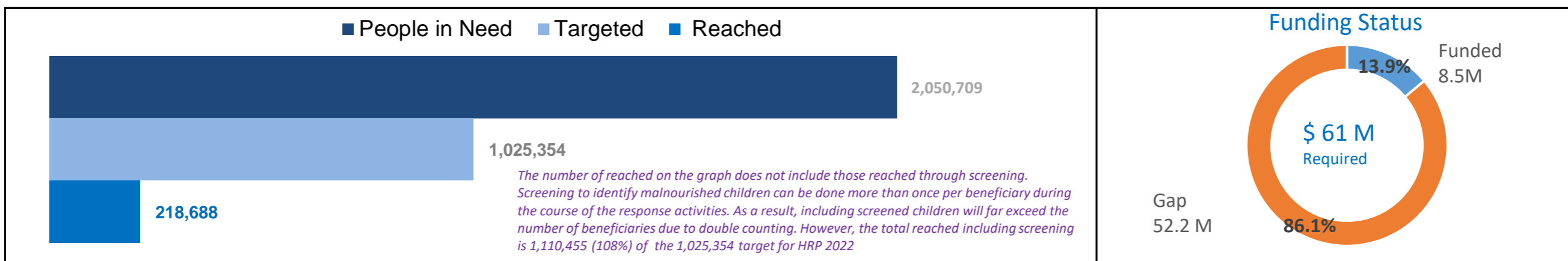




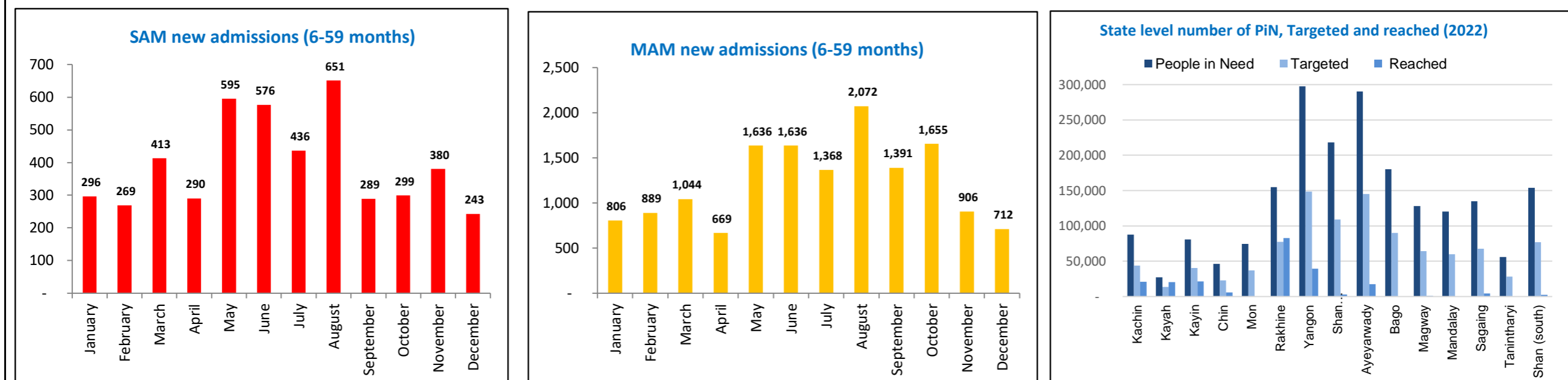
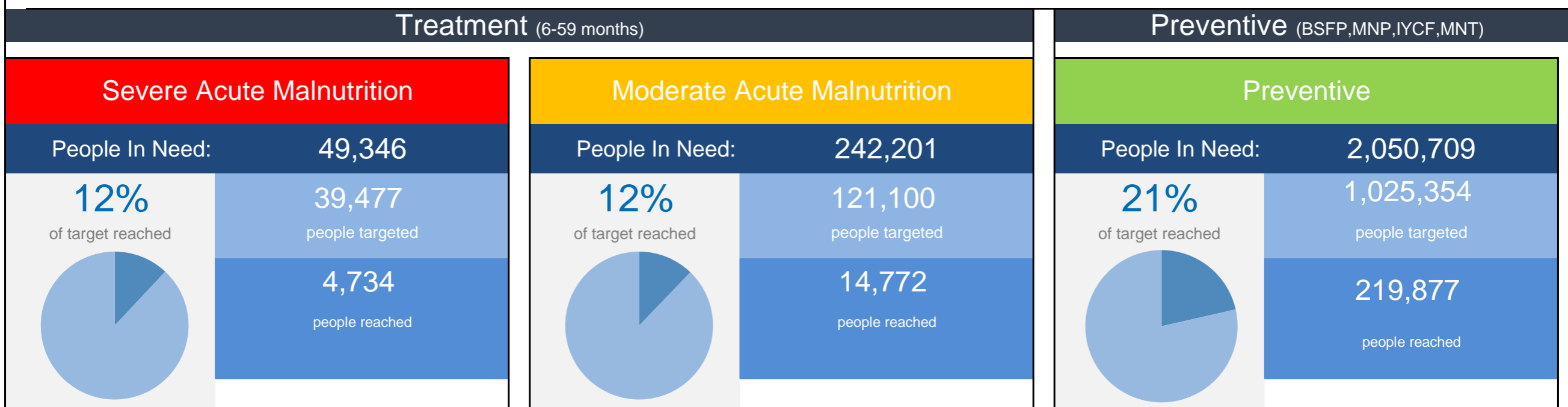
## CLUSTER OBJECTIVES

As per the HRP

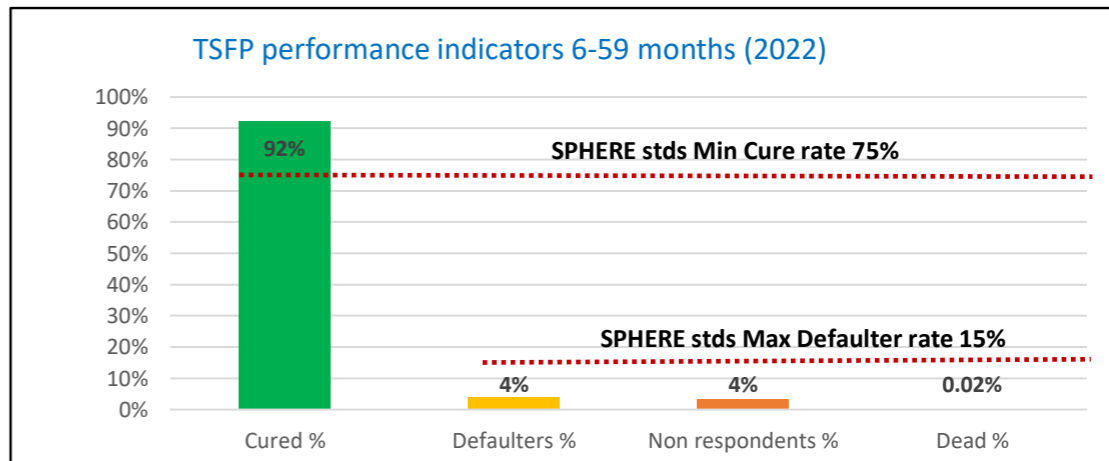
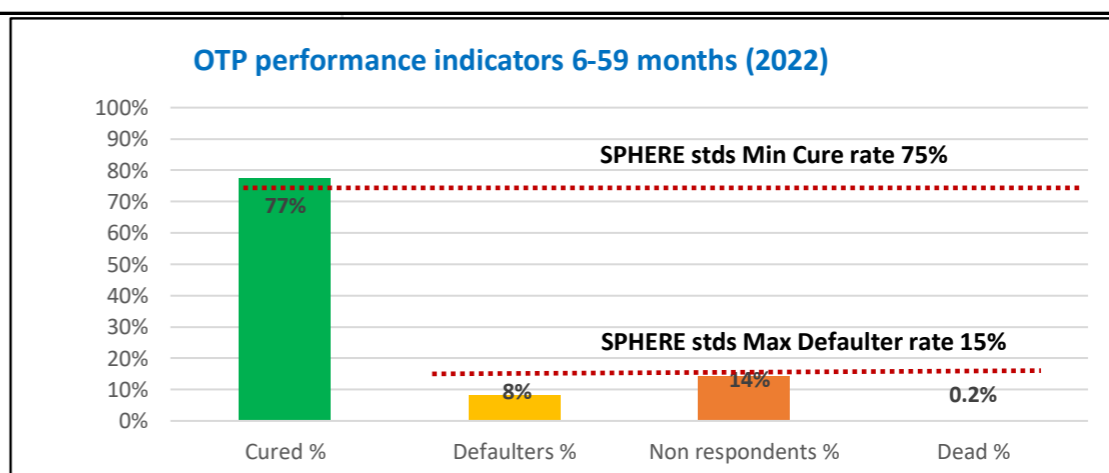
- 1 Specific Objective 1: Children and women with acute malnutrition access appropriate management services.
- 2 Specific objective 2: Nutritionally vulnerable children and women access preventive nutrition-specific services.



### Nutrition Response is Broken Down into Treatment and Preventive Response



MNT PLW Reached: <b>64880</b> MNT PLW Target: <b>363835</b> Percentage to target: <b>18%</b>	MNP 6-59 Reached: <b>112469</b> MNP 6-59 Target: <b>661519</b> Percentage to target: <b>17%</b>
BSFP PLW Reached: <b>27186</b> BSFP PLW Target: <b>70046</b> Percentage to target: <b>39%</b>	BSFP 6-59 Reached: <b>76045</b> BSFP 6-59 Target: <b>117155</b> Percentage to target: <b>65%</b>
IYCF PLW Reached: <b>70950</b> IYCF PLW Target: <b>363835</b> Percentage to target: <b>20%</b>	TSFP PLW Reached: <b>3609</b> TSFP PLW Target: <b>16217</b> Percentage to target: <b>22%</b>



Reporting Partners (40): ACF, AYO, CARE, CDN, CERA, CPI, CSI, ENDO, HDI, HKI, HPA, IPP, IRC, KBC, KMSS, KYDO, MAM, MHAA, MHDO, MM, MSF, Nyein, PCM, PDN, PHCD, PIN, PLAN, PSSAG, PUI, RI, SCI, SNF, SSSYCB, STH, TDH, TSD, WCM, WFP, WHH, WPN, WV, UNICEF