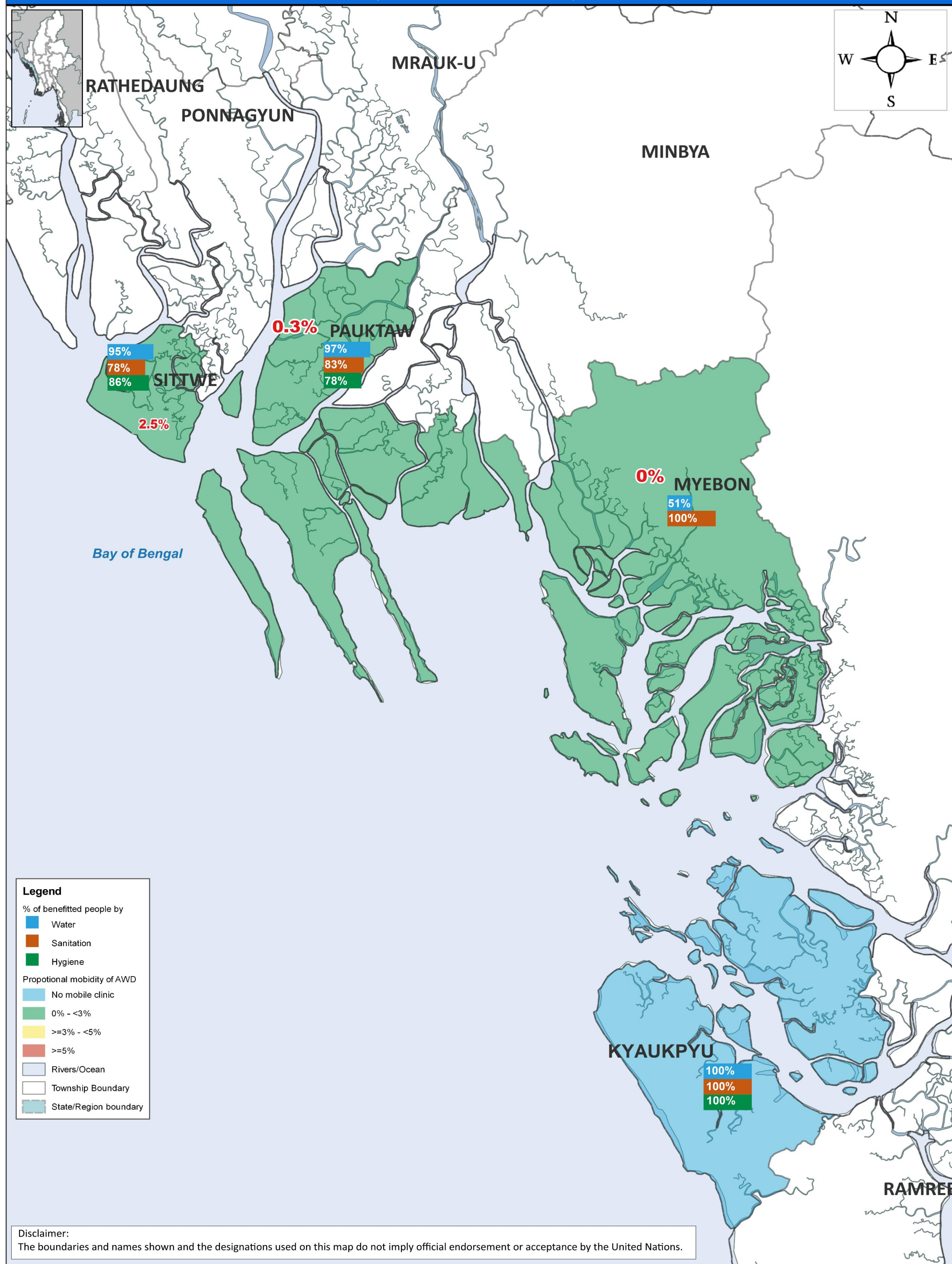


WASH & HEALTH Integration , RAKHINE STATE
(October - December 2022)



HEALTH

Source of information

The information of acute watery diarrhea and influenza like illness are received from Rakhine Early Warning, Alert and Response System (EWARS). Note that real-time EWARS monitoring is practiced, and that necessary actions are independent of this analysis.

Detailed information for standard operating procedure - <http://bit.ly/33tBDiX> and database manual - <http://bit.ly/36ghhfN>

Formula for proportional morbidity: Numerator is the number of acute watery diarrhea cases (OR) number of Influenza like illness (new cases only) divided by the denominator of total number of consultations in the same area during the specified time period.

Contact Us:

CURTIN NIEMI, Tamara
WHE Technical Officer,
Health Cluster Coordinator curtinniemi@who.int
WHO Yangon Office

Hedi ben Mustapha
Health Cluster | Information Management Officer
South-East Asia | WHO Myanmar Office
benhe@who.int
Skype: live:13290cbdbb90a07e

WASH

Source of information

The information is coming form WASH partners' quarterly 4W report.

For more detail information : Follow the link:
https://drive.google.com/open?id=0B_b4O8K5B0rKa2Y3dF9sU1dUeTg

Contact Us:

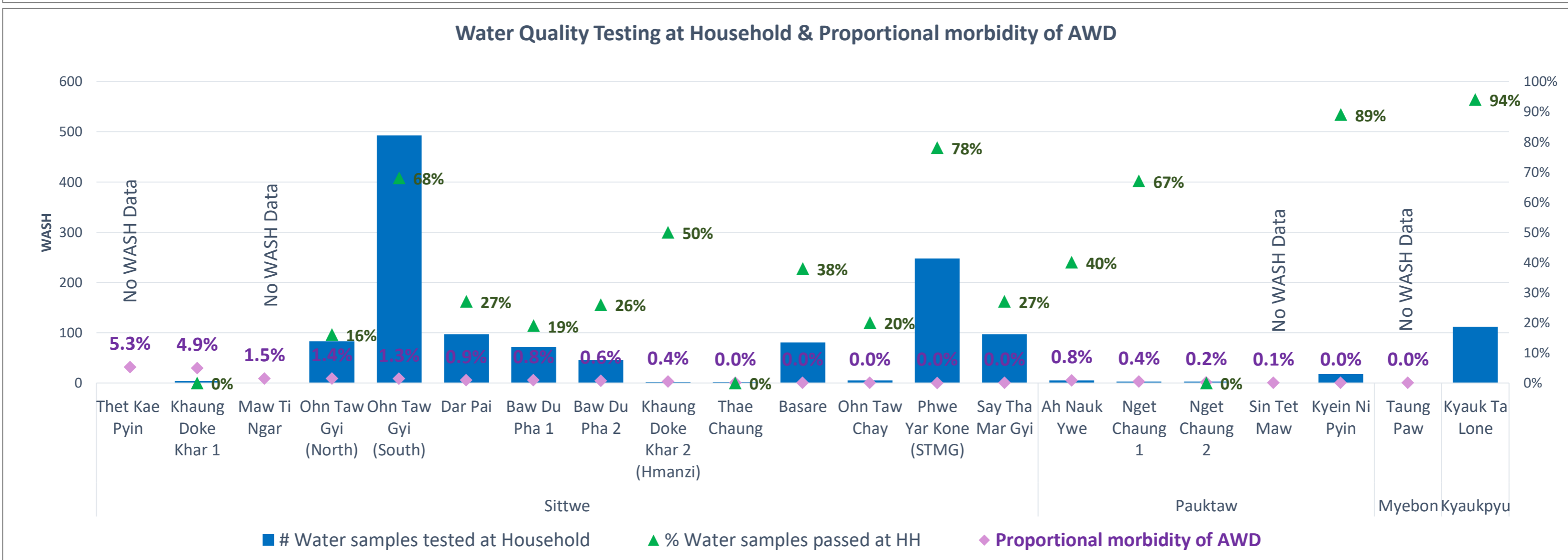
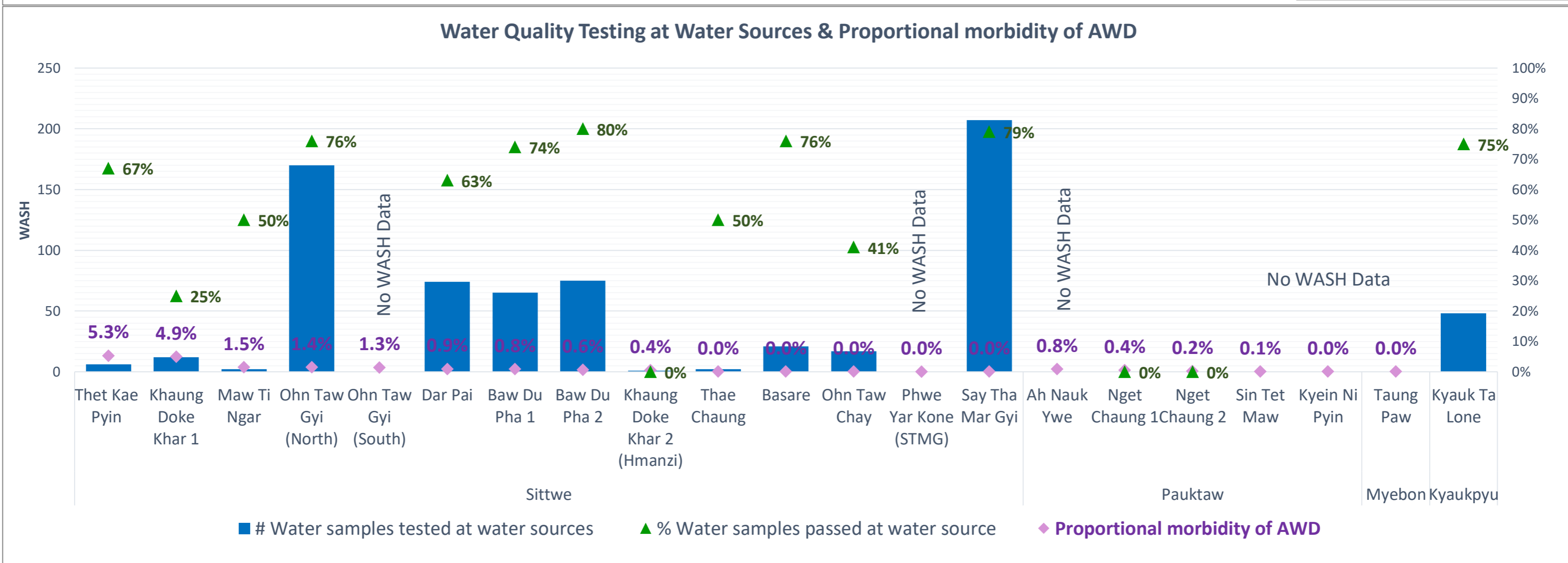
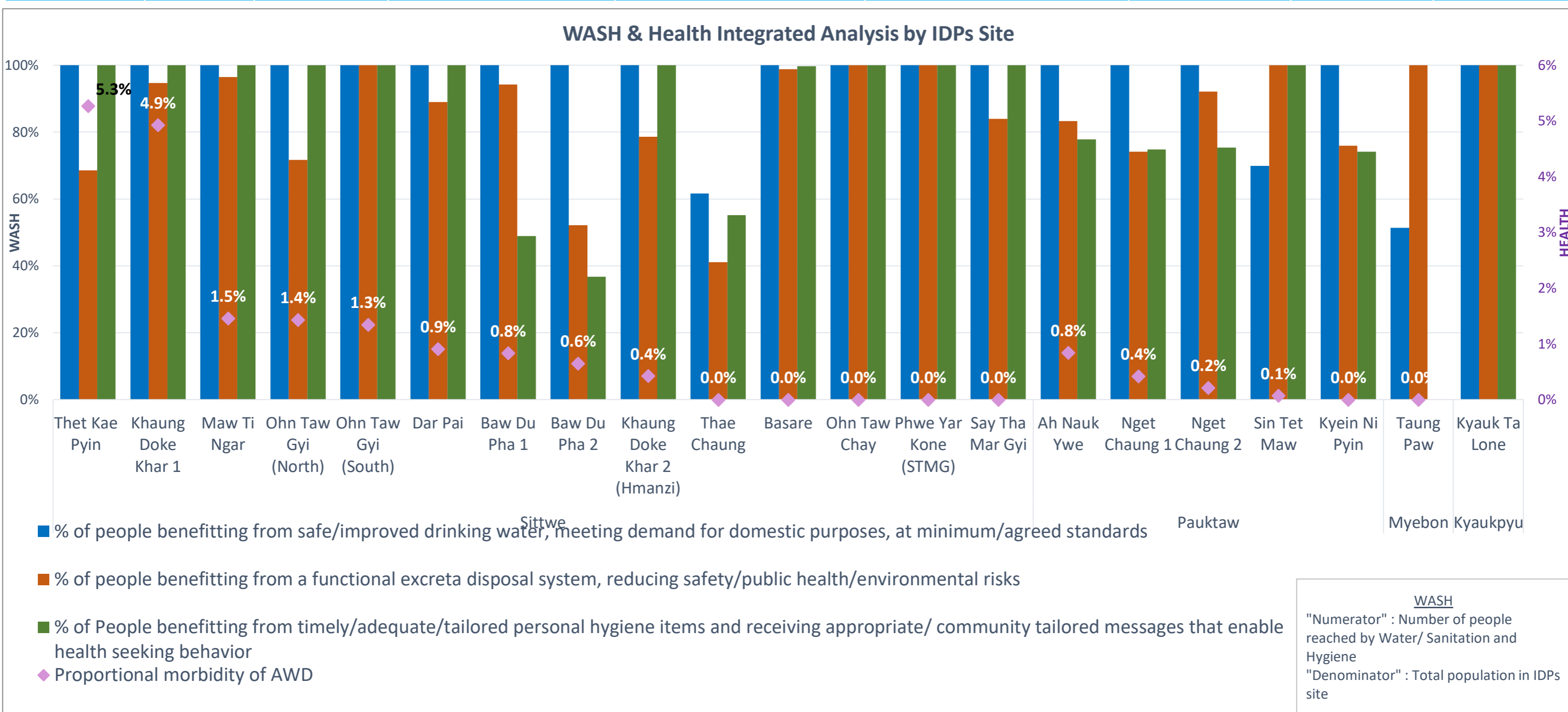
Eyad Aldubai
Myanmar WASH Cluster Coordinator
ealdubai@unicef.org
UNICEF Yangon Office

Mee Mee Thaw
WASH Cluster Information Management Officer,
(+95) 0976 073 2063

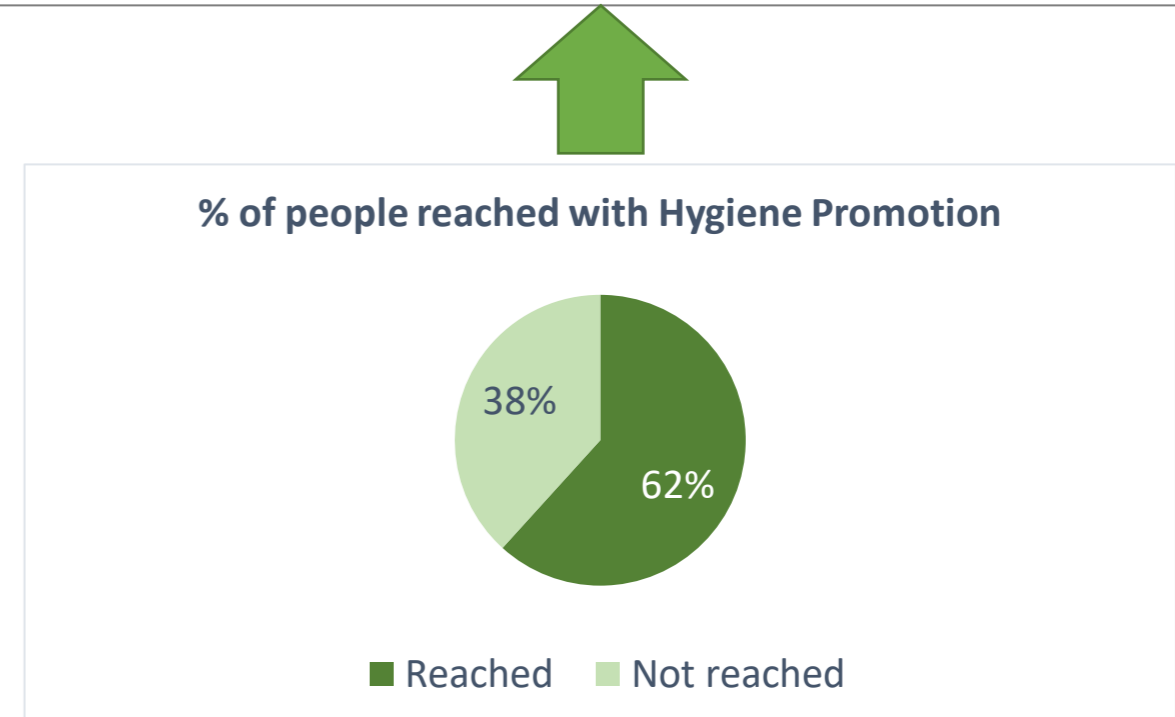
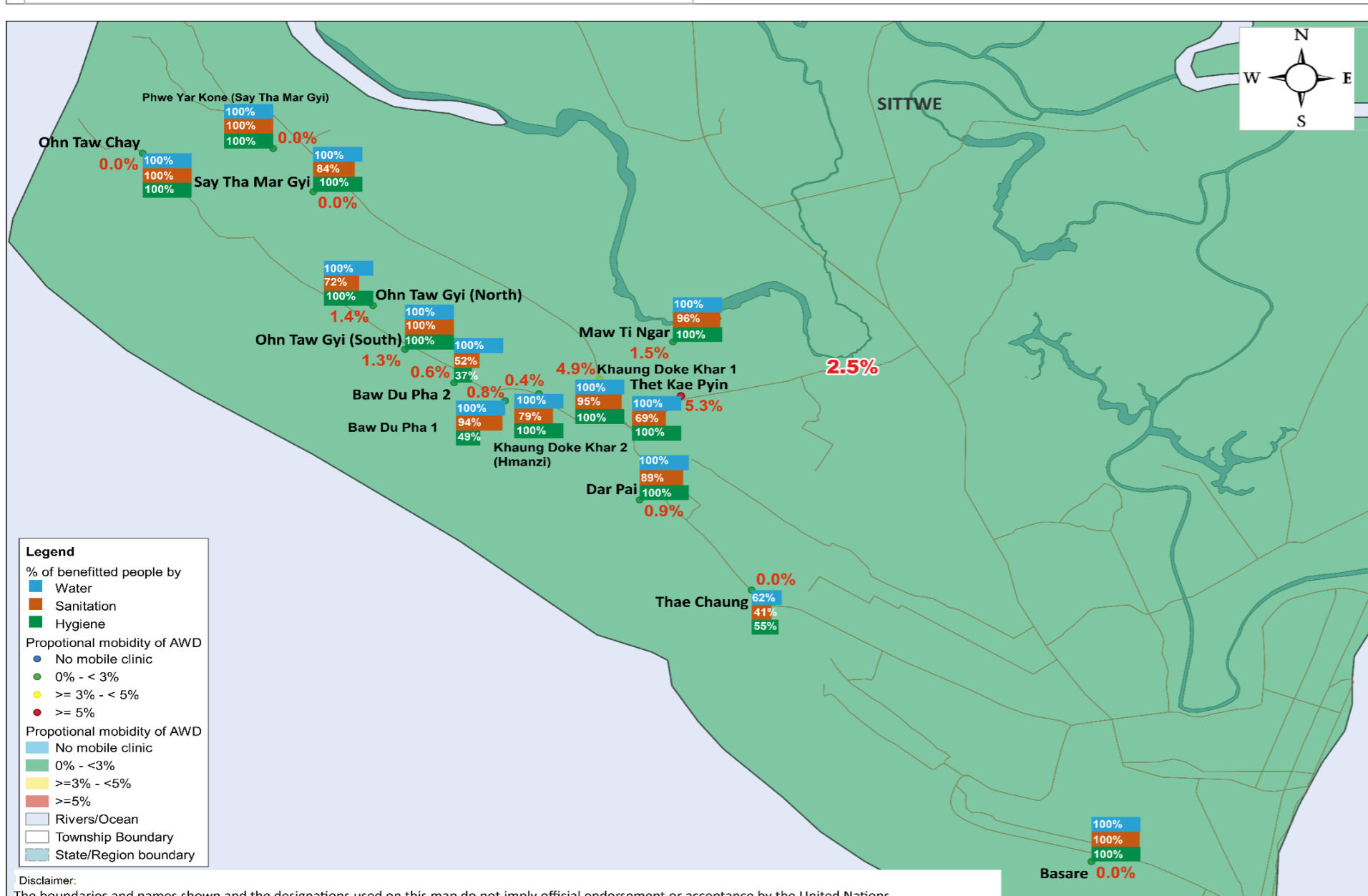
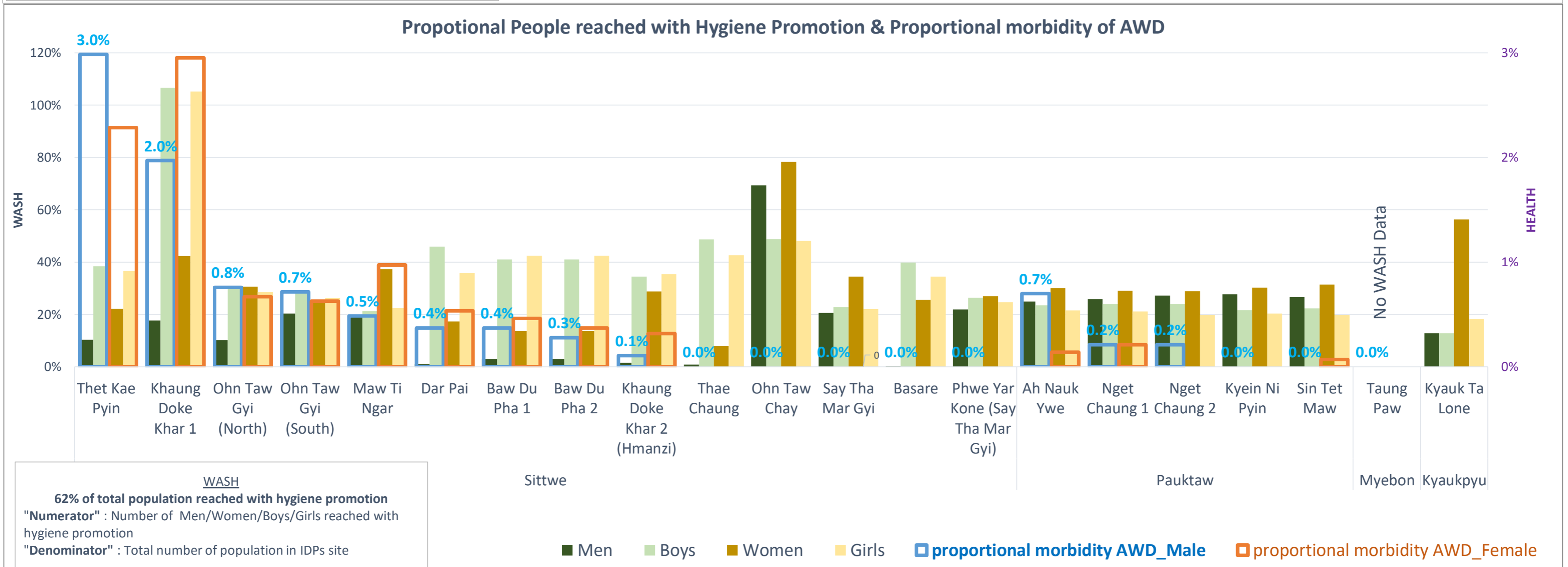
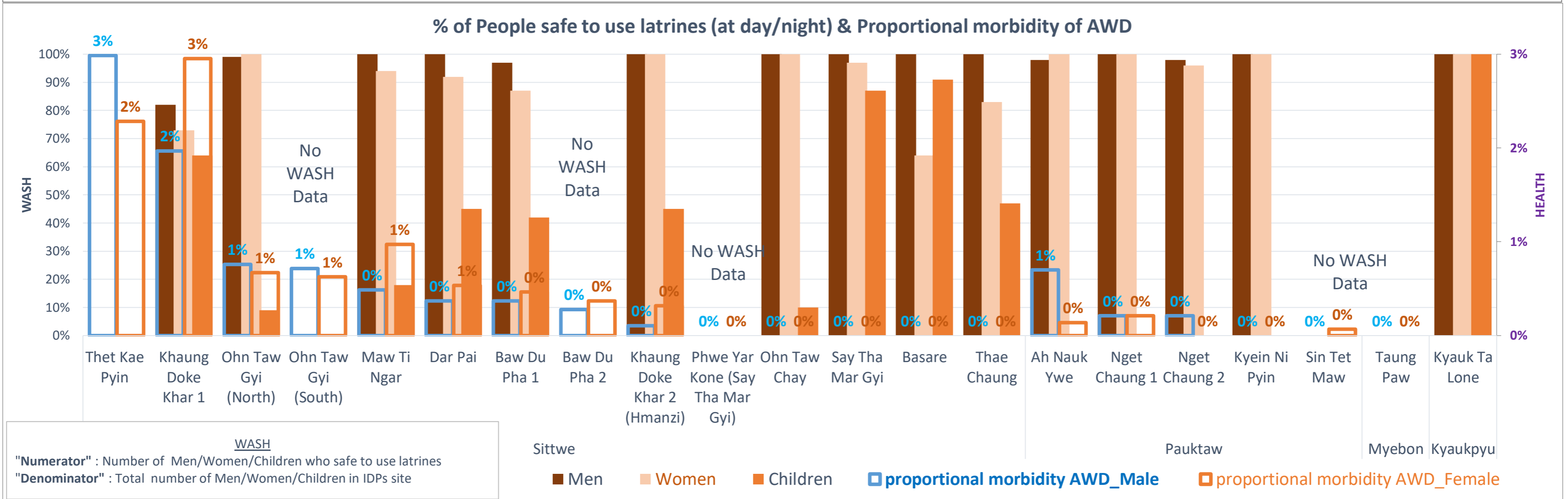
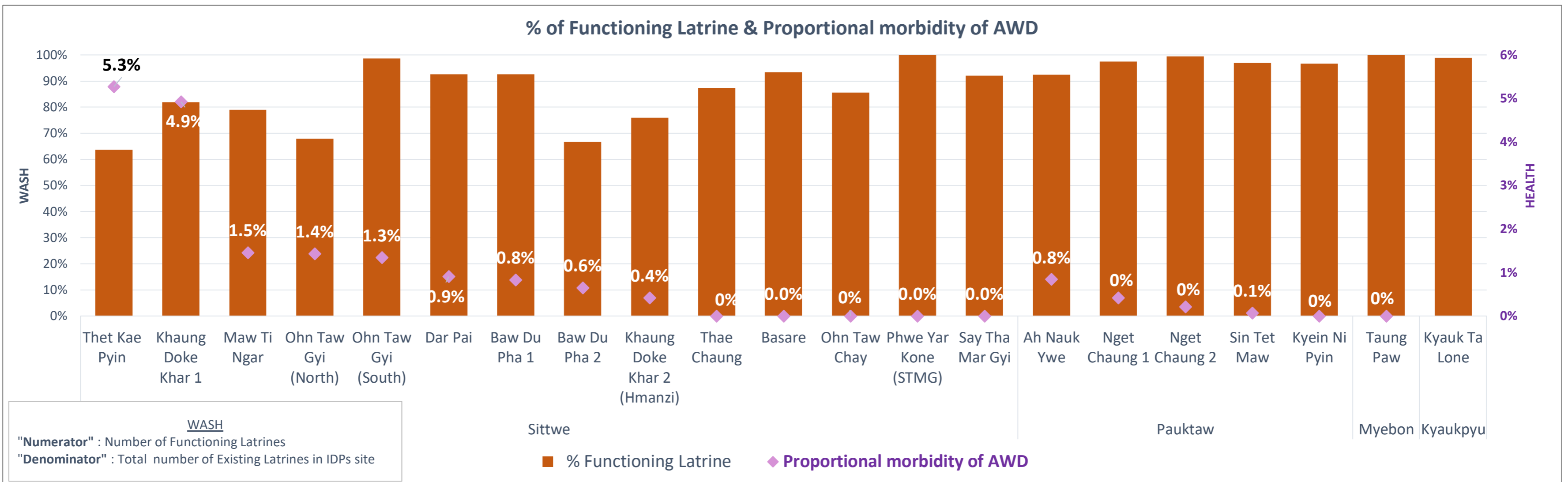
mthaw@unicef.org,
UNICEF Yangon Office

WASH Indicators	Definition	Corresponding 4W sub indicator	Parameter/Assumptions
Number of women, men, boys and girls benefitting from safe/improved drinking water, meeting demand for domestic purposes, at minimum/agreed standards	Safe water: fecal coliform count of 0 organisms per 100 ml of water Improved source of water: type of water source that, by nature of its construction or through active intervention, is likely to be protected from outside contamination, in particular from contamination with fecal matter. Domestic purposes: bathing, drinking and cooking	# of functional improved water sources (Handpump) in the site operating at the end of the reporting period # of functional improved water sources (tapstand/hand dug well) in the site operating at the end of the reporting period # of people who received safe drinking water (through household water filters or centralized water treatment system) # of litres of water supplied by water boating/trucking during water scarcity to total population in the site period	Improved water sources: tapstand/Hand dug well 400 PPL, Hand Pump 500 PPL, Tank, Water Boating/Trucking, Distribution System (max: 15L/P/D, min 5-7.5L/P/D : 8 hr tapstand open,
Number of targeted women, men, boys and girls benefitting from a functional excreta disposal system, reducing safety/public health/environmental risks	Functioning excreta disposal system: system which leads to safe disposal of excreta, so that it does not contaminate the environment, water, food or hands, is essential for ensuring a healthy environment and for protecting personal health.	# of functional adult latrines that meet design requirements in the site operating during reporting period # of functional children latrines that meet design requirements in the site operating during reporting period # of persons with disabilities with adapted sanitation option	Camp: 20people : 1latrine
Number of targeted women, men, boys and girls benefitting from timely and/or adequate and/or tailored personal hygiene items and receiving appropriate/ community tailored messages that enable health seeking behavior		# of people (men) receiving consultation, hygiene promotion messages and sessions during reporting period # of people (women) receiving consultation, hygiene promotion messages and sessions during reporting period # of people (boys) receiving consultation, hygiene promotion messages and sessions during reporting period # of people (girls) receiving consultation, hygiene promotion messages and sessions during reporting period # of affected households receiving a sufficient quantity of soap during the reporting period # of affected women and girls receiving a sufficient quantity of sanitary pads during the reporting period	# of people receiving consultation, hygiene promotion messages and sessions during reporting period (OR) # of people receiving basic Hygiene items

WATER, SANITATION AND HYGIENE						HEALTH		
Township	Total Sites	Total PoP	# of people benefitting from safe/improved drinking water, meeting demand for domestic purposes, at minimum/agreed standards	# of people benefitting from a functional excreta disposal system, reducing safety/public health/environmental risks	# of People benefitting from timely and/or adequate and/or tailored personal hygiene items and receiving appropriate/ community tailored messages that enable health seeking behavior	Total consultations	Cases of Acute watery diarrhea	Proportional morbidity of AWD
Kyaukpyu	1	1,086	1,086	1,086	1,086			
Myebon	1	2,920	1,500	2,920	-	241	-	0.0%
Pauktaw	5	24,835	23,974	20,669	19,439	3,744	10	0.3%
Sittwe	14	98,105	93,133	76,463	84,150	25,395	636	2.5%
Grand Total	21	126,946	119,693	101,138	104,675	29,380	646	2.2%



RAKHINE STATE - IDP sites (2022 - Qtr 4 - HEALTH & WASH Integrated Analysis, October - December 2022)



Source of information
 The information of acute watery diarrhea and influenza like illness are received from Rakhine Early Warning, Alert and Response System (EWARS). Note that real-time EWARS monitoring is practiced, and that necessary actions are independent of this analysis.

Detailed information for standard operating procedure - <http://bit.ly/33tBDiX> and database manual - <http://bit.ly/36ghhfn>

Formula for proportional morbidity: Numerator is the number of acute watery diarrhea cases (OR) number of Influenza like illness (new cases only) divided by the denominator of total number of consultations in the same area during the specified time period.