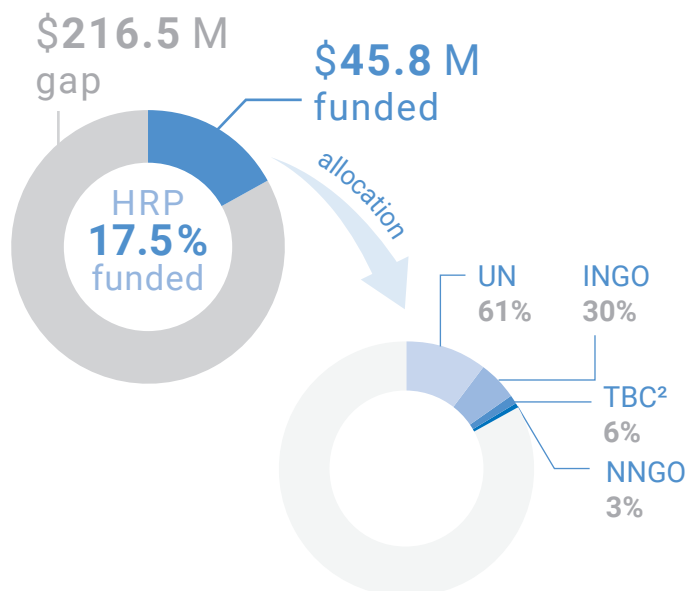


\$262.3 M

Humanitarian Response Plan
requirements for 2020¹

All amounts are in US dollars



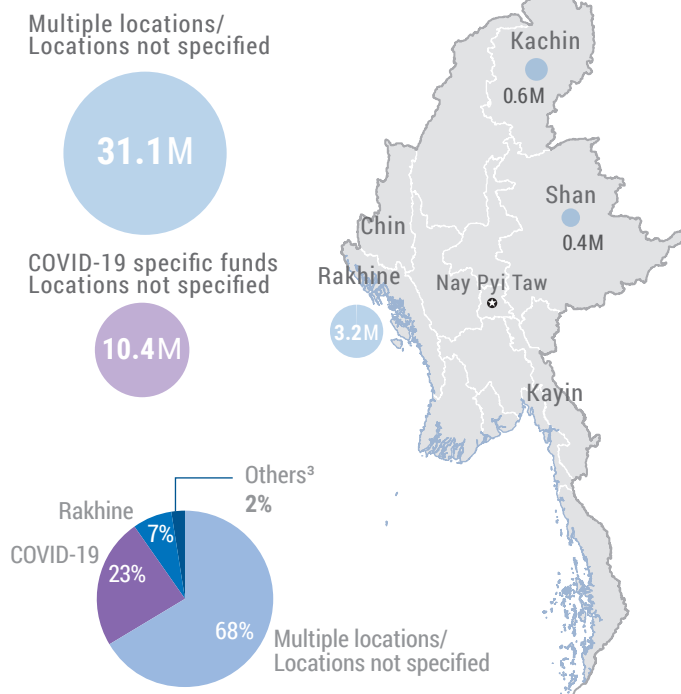
1. Including COVID-19 requirements of \$46 M.

2. "To be confirmed (TBC)" refers to MHF contributions which have not yet been allocated and for which recipients have not yet been specified.



HRP FUNDING BY GEOGRAPHIC AREA

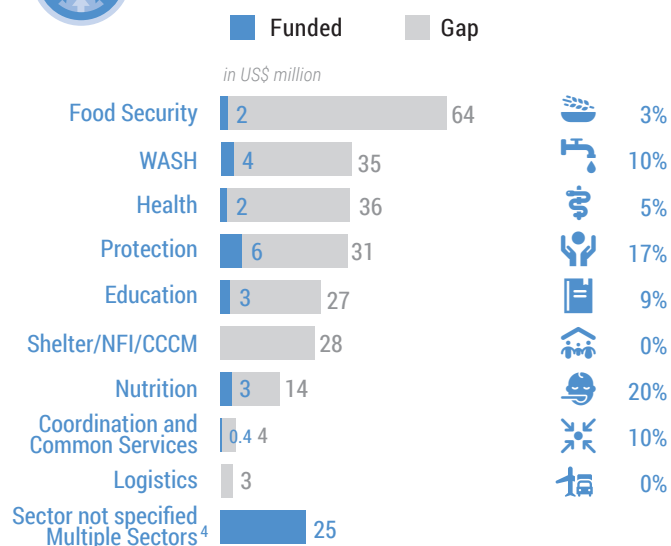
in US\$



3. "Others" includes contributions to Kachin and Shan states.

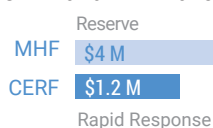


HRP FUNDING BY SECTOR



4. Information by sector was not available at the time of reporting.

CERF and MHF⁵ allocations up to 1 May 2020

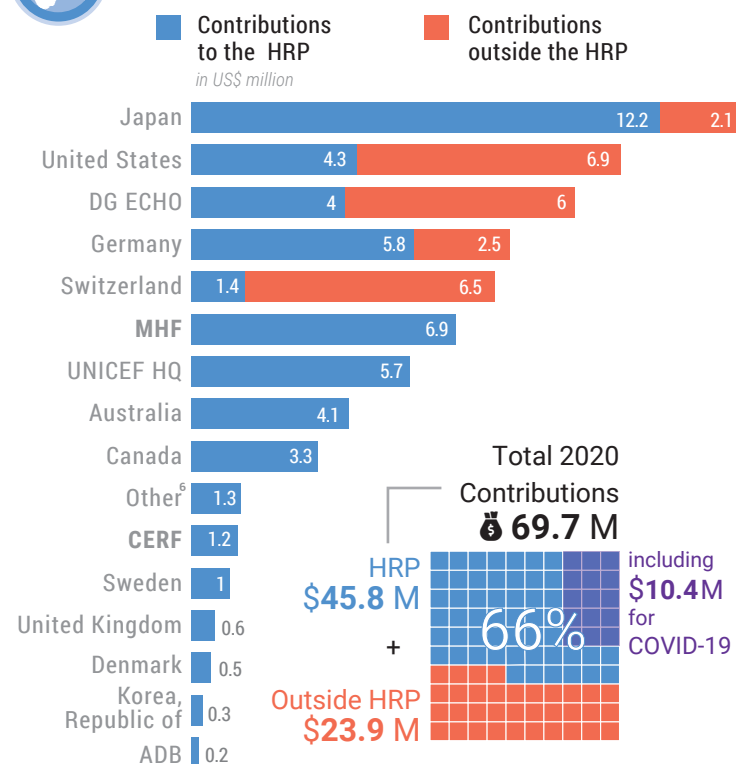


The COVID-19 Addendum to the 2020 Myanmar HRP has mobilized 23 per cent of its requirements (\$10.4 million) at the time of reporting.

5. The Myanmar Humanitarian Fund (MHF) is a country-based pooled fund managed by OCHA Myanmar.



DONOR CONTRIBUTIONS



6. "Others" includes the private sector and lateral transfers from UN agencies headquarters to their country offices.