

United Nations Network



For Nutrition and Food Security

2015: Urban Yangon nutrition stakeholder mapping as preparation for developing a concept note for a joint proposal



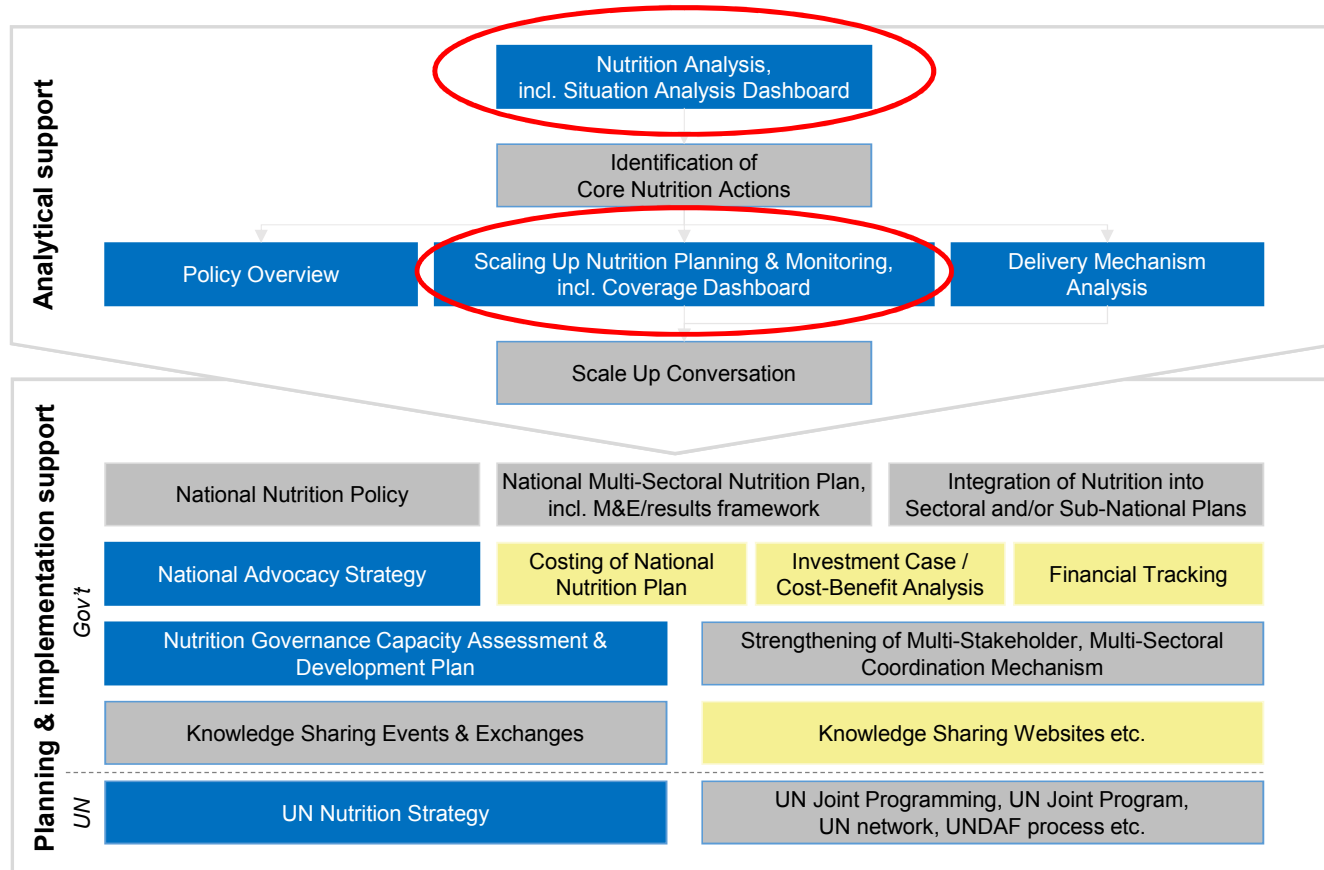
Working together to improve nutrition and food security, supported by UN REACH
REACH in Myanmar is funded by Global Affairs Canada

REACH pursues 4 outcomes leading to developmental impact

Theory of Change



Support to analysis and strengthening nutrition governance



Source: REACH Secretariat

WFP/REACH urban nutrition mapping exercise: process

- Recruited consultant (Michael Slingsby)
- Introduced the mapping methodology (REACH/BCG/SUN PMT)
- Selected core nutrition actions (based on UN REACH Compendium and draft Myanmar government CNAs being developed by SUN MSP)
- Developed the multi-stakeholder contact database
- Conducted interviews with stakeholders (*project activities and implementation townships, interventions, coverage, target groups, timeline, budgets*)
- Inputted data onto SUN PMT templates
- Collated data and compiled tables
- Worked with MIMU to transfer data to make **maps**
- Submitted database and maps to WFP
- Made recommendations to WFP for joint programme concept note



Scaling Up Nutrition Planning & Monitoring Tool (SUN PMT) Training guide

February 2016



REACH

ACCELERATING THE SCALE-UP OF FOOD AND NUTRITION ACTIONS



Output of Scaling Up Nutrition Planning & Monitoring Tool has 4 elements supporting a scale-up discussion

Qualitative view	Quantitative view	Guidance for scaling up nutrition	Continuous monitoring
<p>Recap nutrition situation* and nutrition actions <i>Who does what where?</i></p>	<p>Coverage <i>What % of the target group is covered?</i></p>	<p>Guidance for a stakeholder dialogue <i>How & where to scale up nutrition?</i></p>	<p>Implementation monitoring <i>Are targets achieved over time?</i></p>
<ol style="list-style-type: none"> 1 What is the nutrition situation of a country/ region? 2 Who are the key stakeholders? What are their roles? 3 Which stakeholders are doing what where? 	<ol style="list-style-type: none"> 4 What % of the target group is covered nationally; via which delivery mechanisms? 5 What % of target groups are covered per action? 6 What % of the target group is covered per region? 7 For each region, who is reaching what % of the target group? 	<ol style="list-style-type: none"> 8 What are the stunting levels (e.g. prevalence)? What is the action intensity per region? 9 Which regions are not adequately addressed? 10 Are children receiving the nutrition actions they may need? 11 Where are there action gaps in addressing key nutrition problems? 	<ol style="list-style-type: none"> 12 Is the target group coverage improving over time? 13 Are targets achieved as defined in the national plan?

*Note: The REACH Scaling Up Nutrition Planning & Monitoring Tool uses outputs from the REACH Multi-sectoral Nutrition Overview and Situation Analysis Dashboard

A5

What delivery mechanisms are typically used for the implementation of each action?



Blank template in appendix

Predefined set of actions/Predefined set of delivery mechanisms	Hospital/Clinic	Health centers	Health outreach workers	Midwife	Agricultural extension workers	Farmer field schools	Agri. business centers / Farmer coops	Pre-school facilities	Primary schools	Secondary schools	Universities	Radio	TV	Billboards	Newspaper	Text message	Internet/Social media	Mass campaigns	Youth groups	Community-based organizations	Community h with volunteers	Women/Mother groups	Traditional birth attendants	Traditional healers	Community leaders	Social service centers	Social service outreach workers	Shops	Pharmacies	Producers	Wholesalers	Religious centers	Micro-credit agencies	NGOs	UN agencies			
Promote optimal breastfeeding practices (e.g. BFHI, BFCI)	✓	✓	✓	✓		✓						✓	✓	✓	✓	✓	✓			✓	✓	✓	✓		✓									✓	✓			
Promote optimal complementary feeding practices	✓	✓	✓	✓		✓						✓	✓	✓	✓	✓	✓				✓	✓	✓	✓											✓	✓		
Provide specialized nutritious products for complementary feeding	✓	✓	✓	✓																✓	✓	✓	✓					✓								✓	✓	
Provide vitamin A supplements	✓	✓	✓					✓										✓																		✓	✓	
Provide vitamin D supplements	✓	✓	✓	✓																																✓	✓	
Provide iron supplements	✓	✓	✓	✓					✓	✓								✓												✓						✓	✓	
Provide iron/folic acid / iron supplements	✓	✓	✓	✓					✓	✓								✓												✓						✓	✓	
Provide multiple micronutrient supplements	✓	✓	✓	✓					✓	✓											✓									✓						✓	✓	
Provide zinc supplements	✓	✓	✓	✓																																✓	✓	
Provide iodine supplements	✓	✓	✓	✓																										✓						✓	✓	
Provide calcium supplements	✓	✓	✓	✓																										✓						✓	✓	
Provide therapeutic feeding for SAM	✓	✓	✓																		✓															✓	✓	
Provide supplementary feeding for MAM	✓	✓	✓					✓													✓									✓						✓	✓	
Provide insecticide treated bed nets	✓	✓	✓	✓				✓	✓												✓	✓	✓						✓	✓			✓			✓	✓	
Provide intermittent preventive treatment of malaria	✓	✓	✓	✓																				✓					✓							✓	✓	
Provide deworming tablets	✓	✓	✓					✓	✓									✓																		✓	✓	
Carry out insecticide spraying			✓		✓															✓	✓								✓							✓	✓	
Provide diarrhoea treatment with ORS/ORS-zinc	✓	✓	✓																		✓								✓	✓						✓	✓	
Promote prevention of mother to child transfer of HIV (PMTCT)	✓	✓	✓	✓																	✓	✓	✓													✓	✓	
Provide ARV medication	✓	✓	✓																																		✓	✓
Provide specialized nutritious products in case of disease (HIV/AIDS or TB)	✓	✓	✓																	✓	✓															✓	✓	
Promote professionally assisted births/obstetrics	✓	✓	✓	✓																																	✓	✓
Provide child health checks, including growth monitoring promotion	✓	✓	✓																																		✓	✓
Promote ante-natal care visits, incl. counselling on optimal maternal nutrition practices	✓	✓	✓									✓	✓	✓	✓	✓	✓				✓	✓	✓	✓	✓										✓	✓		
Promote post-natal care visits	✓	✓	✓	✓								✓	✓	✓	✓	✓	✓				✓	✓	✓	✓											✓	✓		
Promote the prevention of adolescent pregnancies	✓	✓	✓						✓	✓		✓	✓	✓	✓	✓	✓			✓	✓	✓	✓	✓										✓	✓	✓		

Note: The delivery mechanisms specified here refer to the primary mechanisms normally used for executing the 'actual' action.

Distinct Count of Organization	Column Labels																	Grand Total	
Row Labels	Agriculture	Coordination	DisasterRiskReduction	Education	Food	Governance	Health	Infrastructure	Livelihoods	NonFoodItems	Nutrition	Other	PeaceBuildingConflictPrevention	PrivateSectorDevelopment	Protection	Shelter	SocialProtection	WASH	Grand Total
(blank)	2	3	1	3		5	1	3	1	1		2		2	6	1			20
Ahlonge				2	1	1	6		2					1	2				11
Bahan		2		3	1		3		1				1		2				10
Botahaung			1	1	2		4		2				2						10
Cocokyun				1															1
Dagon				3	1		5		2				1	1					9
Dagon Myothit (East)	1		1	1	1		4		3						3				10
Dagon Myothit (North)				4	1		10		4				1		5				20
Dagon Myothit (Seikkan)			2	2			5		2						4			1	10
Dagon Myothit (South)				2			5		2						4				11
Dala	3	1	1	6	1		8	2	4				2		6	1			23
Dawbon				2	1		4		2				1		3				9
Hlaing				2	1		7		2				1		3				12
Hlaingtharya			1	6	1	3	16		3				1	1	9	1		2	35
Insein				6	1		10		7					1	8				25
Kamaryut				3	1		5		2				1		2				12
Kawhmu				2	2		5		3						3			1	16
Kayan	1			1	1		3												5
Kungyangon			1	4	2		6		2										13
Kyauktada			2	3	1		5		1				1		1				12
Kyeemyindaing				3	2		7		1			1			4	1		1	11
Lanmadaw				2	1		4		2										8
Latha				1	1		5		1				1						7
Mayangone	1			3	1		7		2										19
Mingaladon				5	2	1	11	1	5					2	6			1	23
Mingalartaungnyunt				2	1		6		3					2	3				12
North Okkalapa				5	1		13		5					1	5				25
Pabedan				1	1		5		2					1					8
Pazundaing				1	1		4		1					1	1				6
Sanchaung				1	1		5		1				1		3				9
Seikgyikanaungto				1	1		4		1						1				7
Seikkan				1			1												2
Shwepyithar	1			7	2	2	13		5		1		1		7			3	32
South Okkalapa				2	1		6		2				1		2				10
Taikkyi	1			2	1		4		2	1			2		2				12
Tamwe				2	1	1	6		1				2		3			1	13
Thaketa				4	1		8		3				2		5				18
Thingangyun				3	2	3	10		3				1		4			1	20
Thongwa	1			1	1		3												6
Yangon City				2		4	6					2			3				15
Yankin				1	1	4	5		1				1		2				10
Grand Total	7	6	8	26	5	12	36	5	19	2	6	2	4	4	29	5	2	7	99

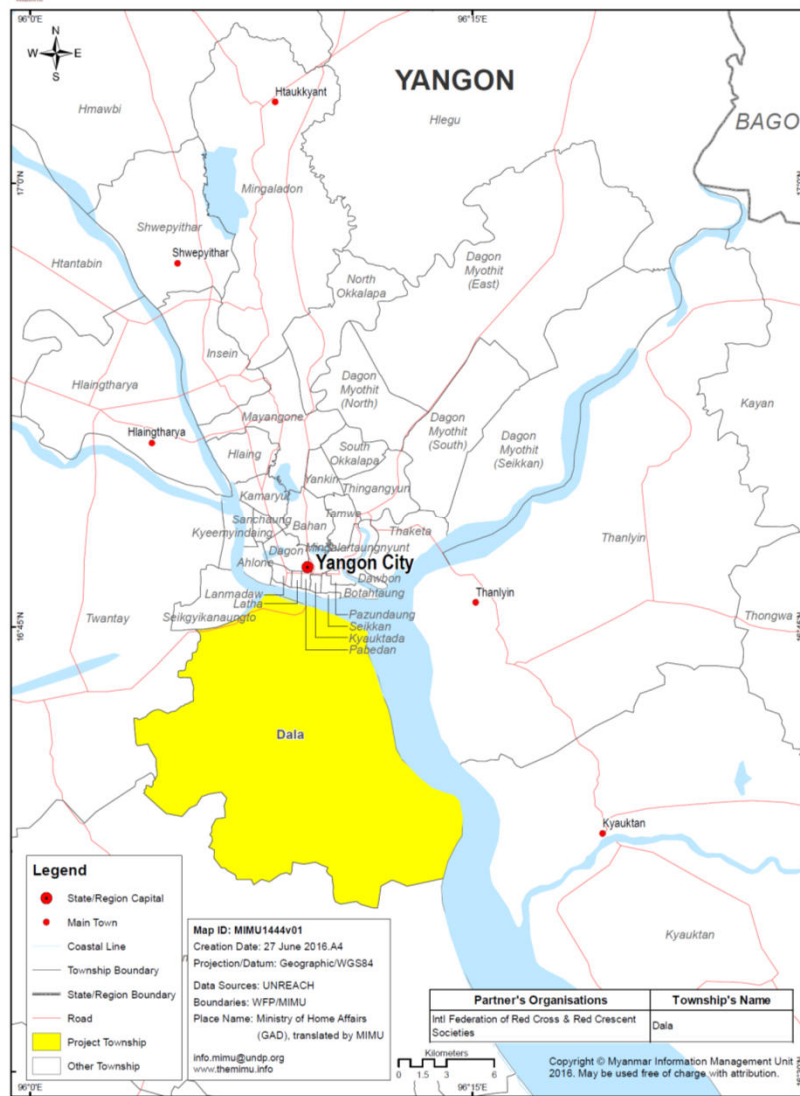
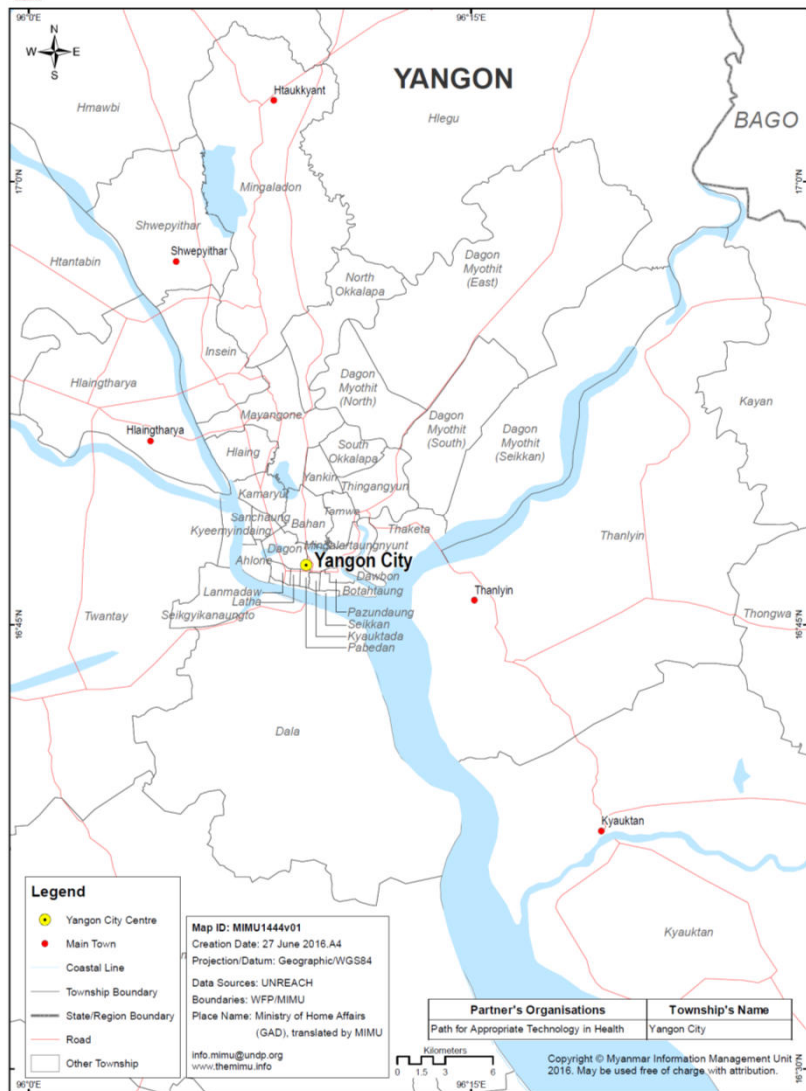
Most listed type of activities:

- Health 56**
- Protection 29**
- Education 26**
- Livelihoods 19**
- Nutrition 6**

Townships with most activities listed:

- Hlaingtharya 35**
- Shwepyithar 32**
- Insein 25**
- North Okkalapa 25**
- Mingaladon 23**
- Dala 23**

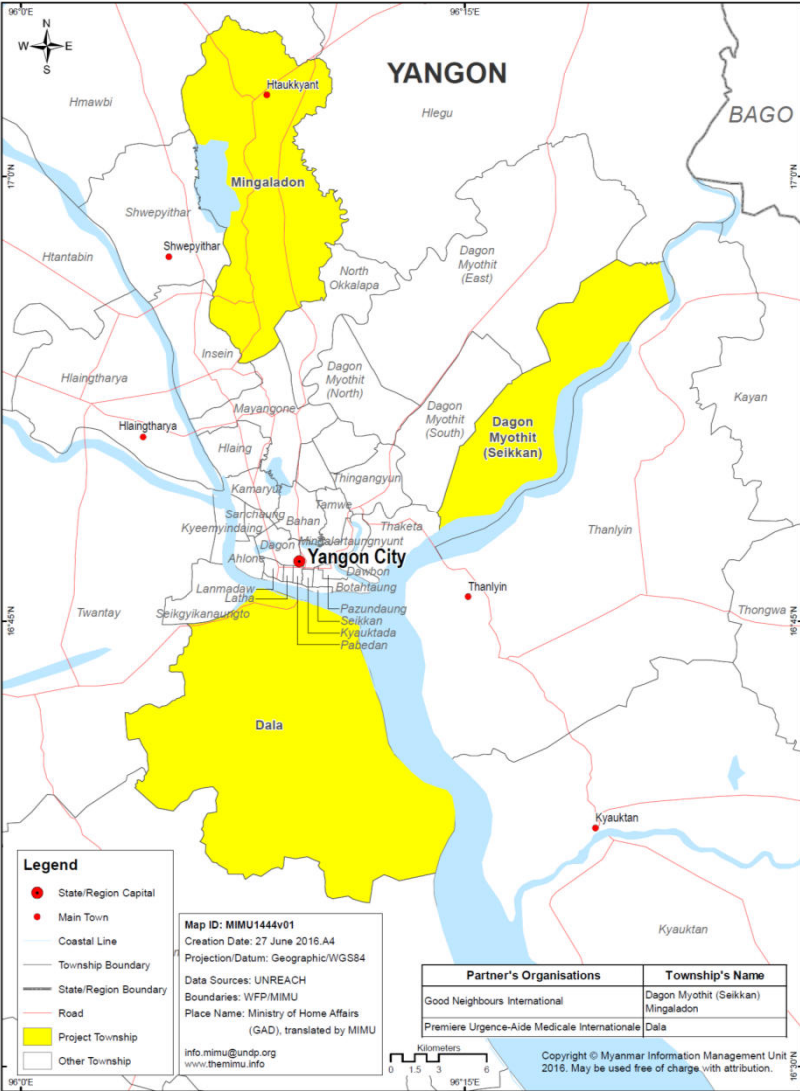
Distinct Count of Township	Column Labels																			
Row Labels	Agriculture	Coordination	DisasterRiskReduction	Education	Food	Governance	Health	Infrastructure	Livelihoods	NonFoodItems	Nutrition	Other	PeaceBuildingConflictPrevention	PrivateSectorDevelopment	Protection	Shelter	SocialProtection	WASH	Grand Total	
ACTED									3											3
Action Aid Myanmar															1					1
Africa Asia Development Relief Foundation				1																1
American Red Cross			2																	2
Ar Yone Oo Social Development Association			1			1										2				4
Asian Development Bank								1												1
Association for Aid and Relief, Japan					6										13				1	17
Association François-Xavier Bagnoud							34		35				32							35
Better and Undisruptive Delivery Support							1													1
BRAC									10											10
British Council				3																3
Burnet Institute Myanmar							24													24
CARE International in Myanmar															6					6
Center for Vocational Training									1											1
CESVI Foundation						2													3	3
Charity Oriented Myanmar		1				7									1					7
ChildFund Myanmar															3					3
Danish Church Aid													1							1
Danish International Development Agency				1																1
Diakonia									1						5					6
Eden Centre for Disabled children				10											1					10
Entrepreneurs du Monde									2											2
Family Health International							11													11
Food & Agriculture Organization	1																			1
Forever Humanitarian & Development Projects				1											1					2
Good Neighbours International				2	1		3		3		2				3	1	2	3		3
Good Sleep														1						1





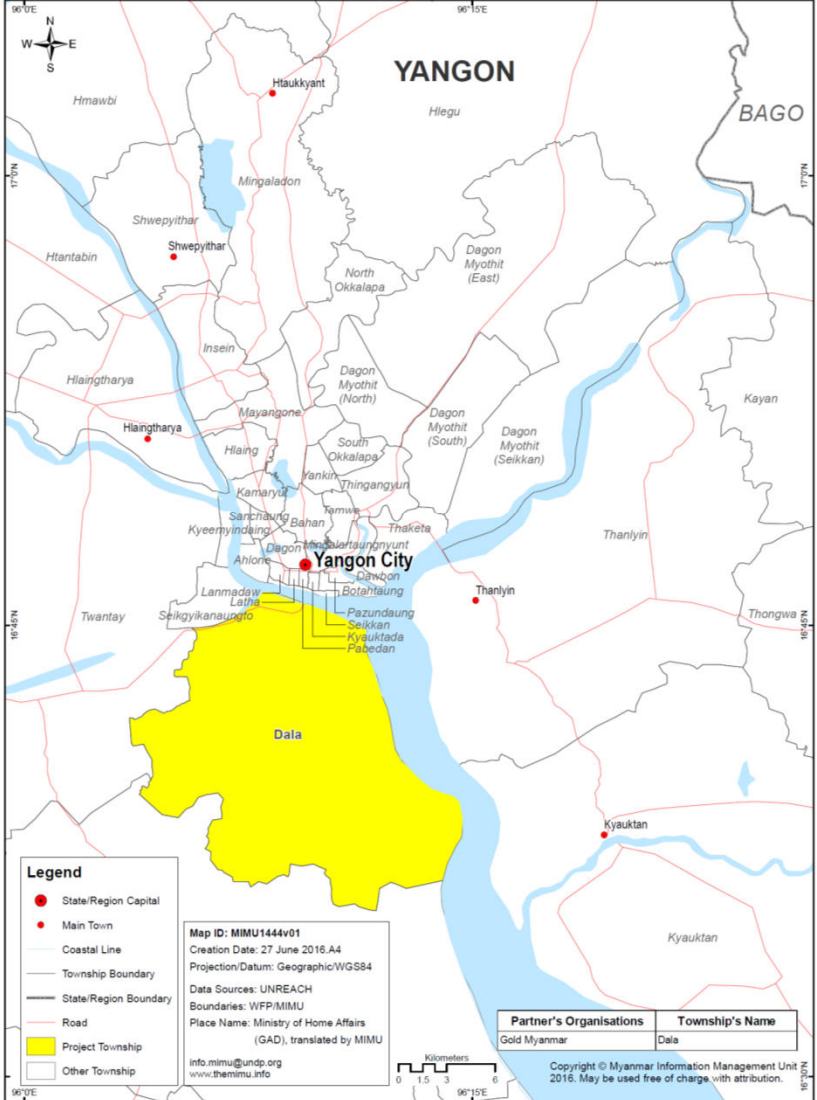
Myanmar Information Management Unit

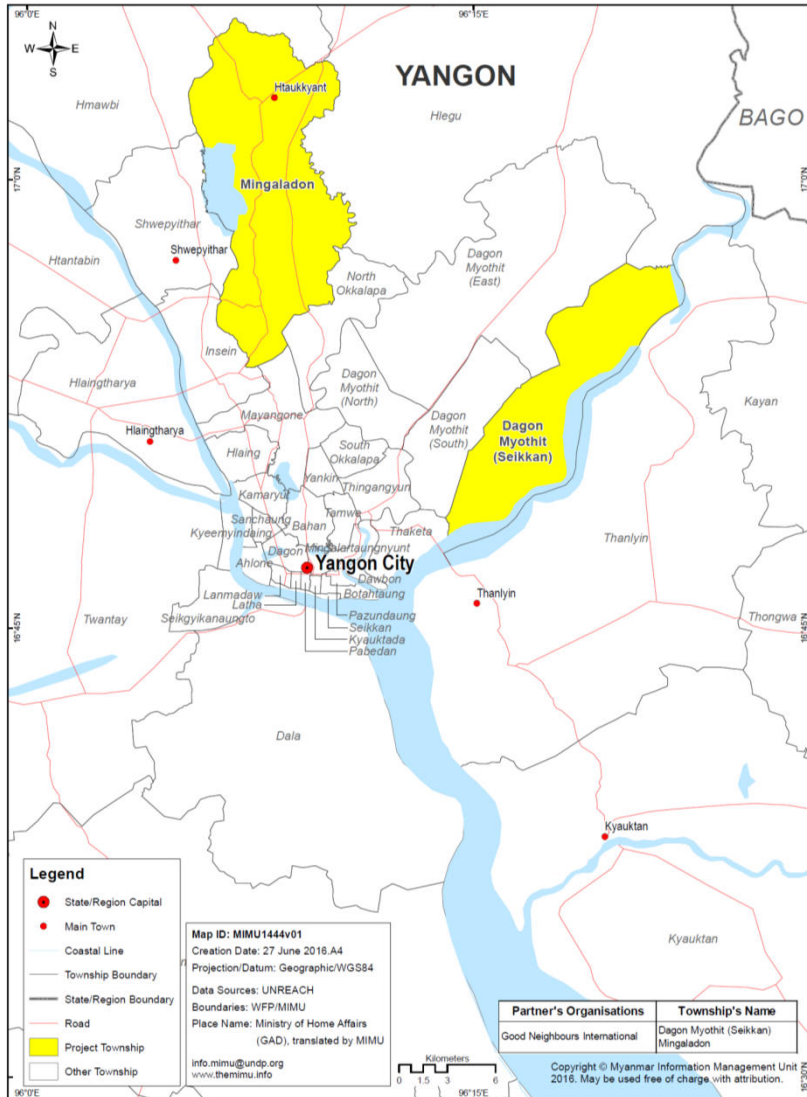
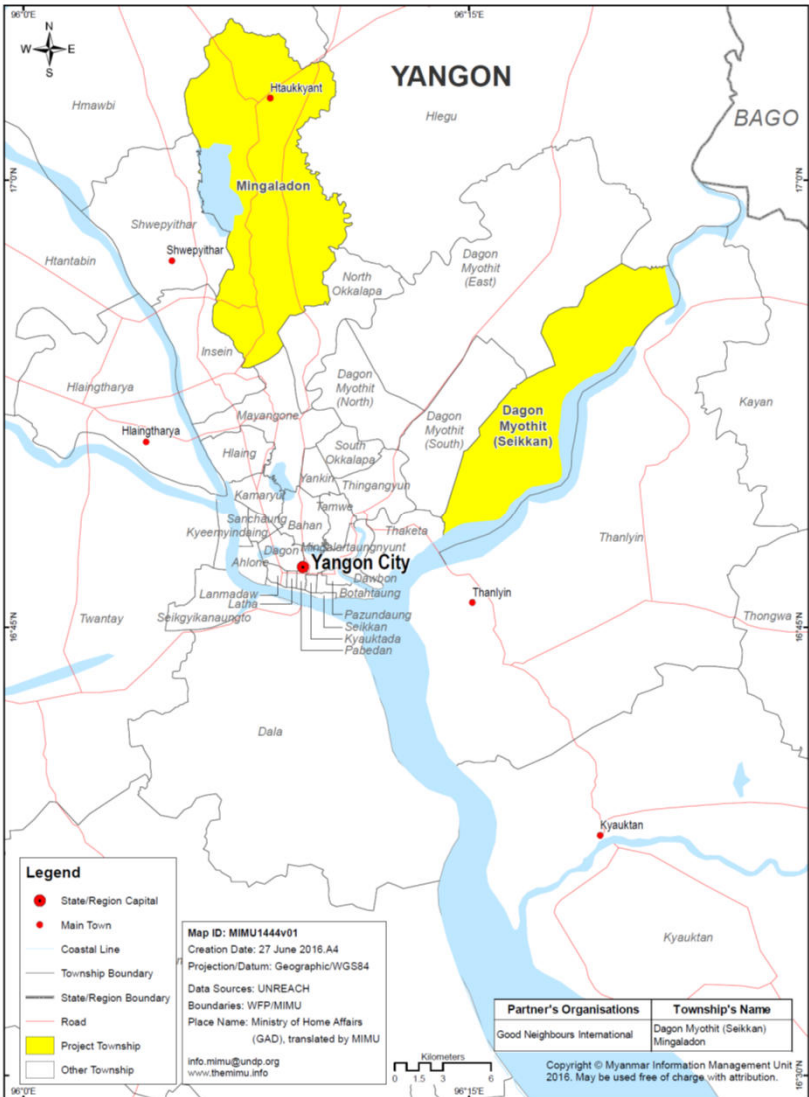
Infant and Young Child Feeding Practices



Myanmar Information Management Unit

Management Of Acute Malnutrition

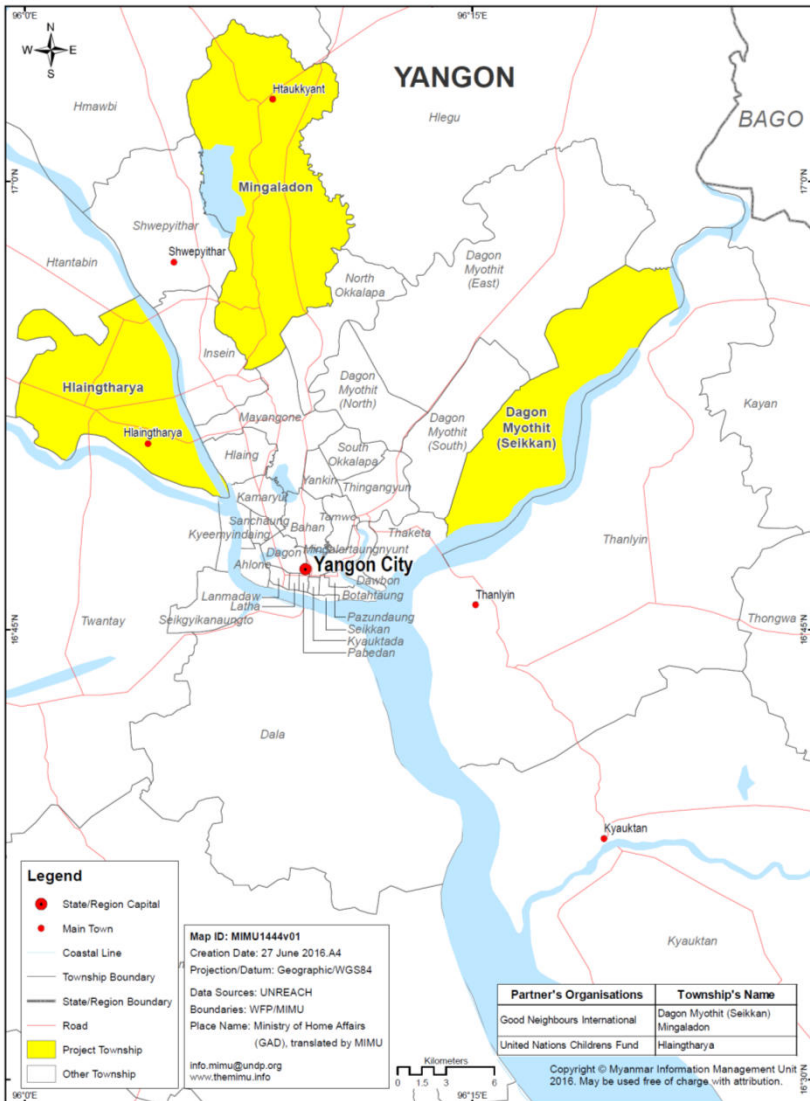






Myanmar Information Management Unit

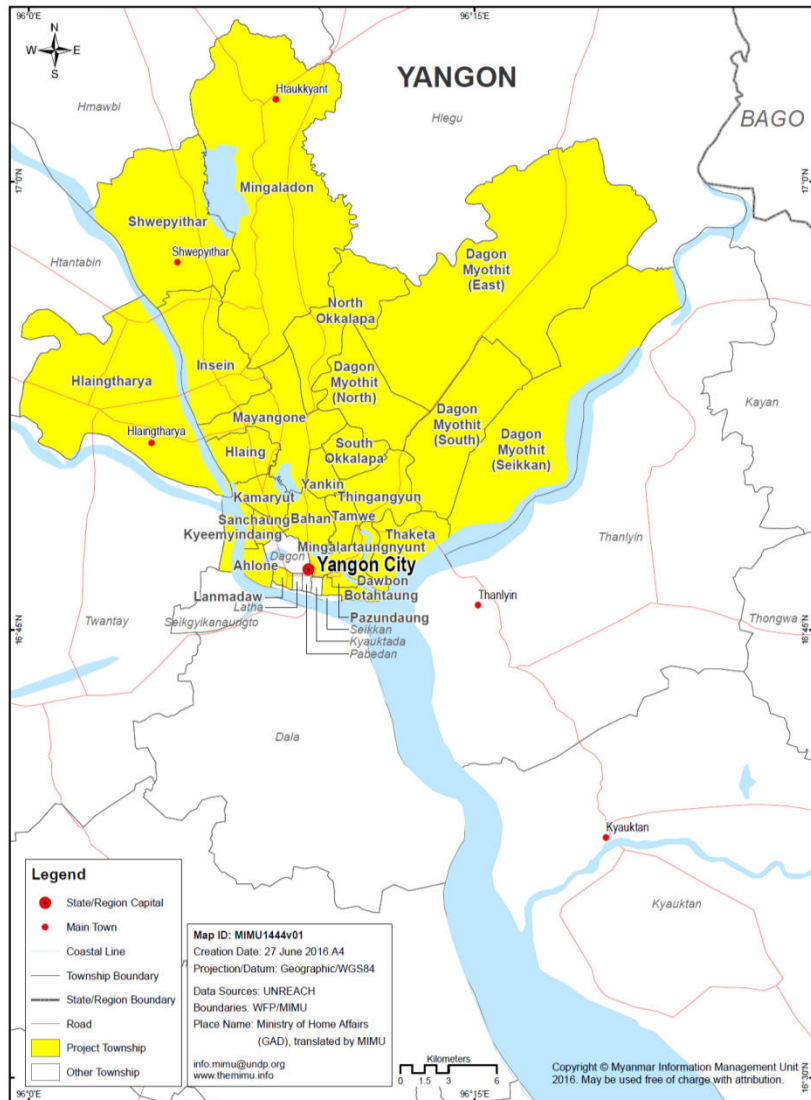
Water, Sanitation and Hygiene (WASH)



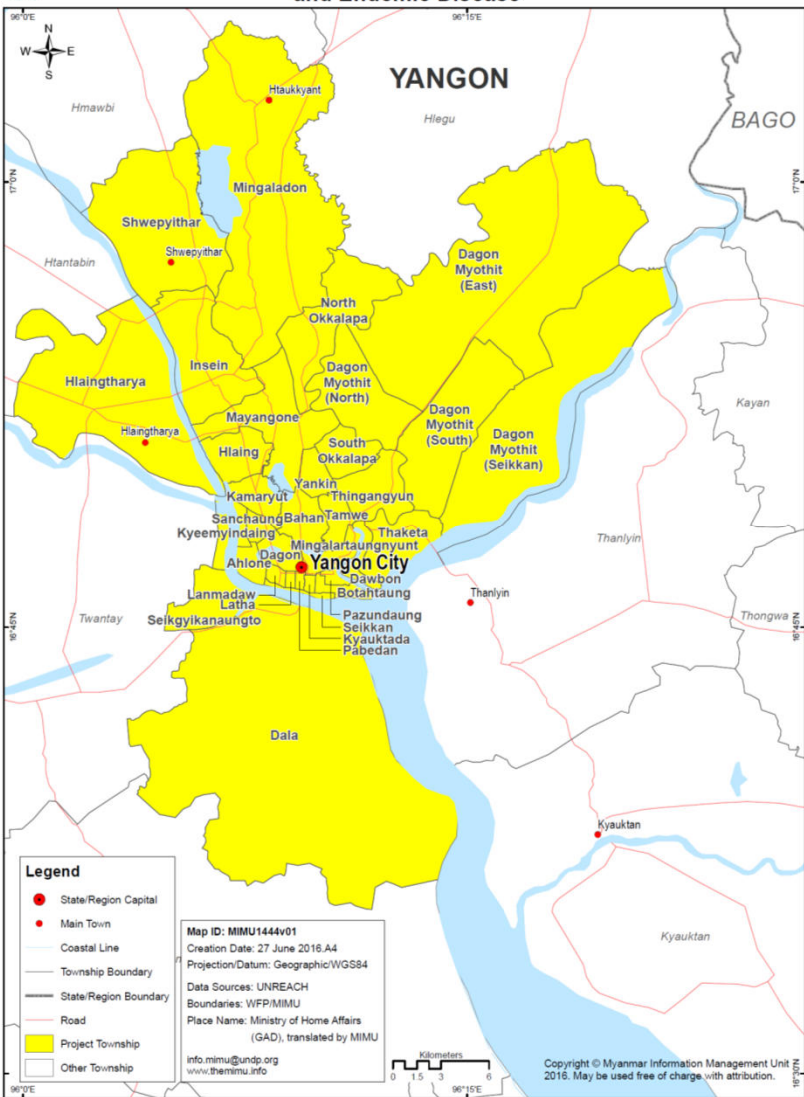


Myanmar Information Management Unit

Maternal New Born and Adolescent Health and Care



Partner's Organisations	Township's Name
Burnet Institute Myanmar	Dagon Myothit (South), Insein, Mingaladon
Marie Stopes International	Shwepyithar, Thaketa, Thingangyun
Population Services International	Ahlon, Bahan, Botahtaung, Dagon Myothit (Seikkan), Dagon Myothit (East), Dagon Myothit (North), Dagon Myothit (South), Dala, Dawbon, Hlaing, Hlaingtharya, Insein, Kamaryut, Kyeemyindaing, Lanmadaw, Mayangone, Mingaladon, Mingalartaungnyunt, North Okkalapa, Pazundaung, Sanchaung, Shwepyithar, South Okkalapa, Tamwe, Thaketa, Thingangyun, Yankin
United Nations Population Fund	Hlaingtharya, Shwepyithar
World Vision	Dagon Myothit (Seikkan)
JSI	Hlaingtharya, Shwepyithar



Disclaimer: The names shown and the boundaries used on this map do not imply official endorsement or acceptance by the United Nations.

Partner's Organisations	Township's Name
Association François-Xavier Bagnoud	Ahlon, Bahan, Botahtaung, Dagon, Dagon Myothit (North), Dagon Myothit (South), Dala, Dawbon, Hlaing, Hlaingtharya, Insein, Kamaryut, Kyauktada, Lanmadaw, Latha, Mayangone, Mingaladon, Mingalartaungnyunt, North Okkalapa, Pabedan, Pazundaung, Sanchaung, Shwepyithar, South Okkalapa, Tamwe, Thaketa, Thingangyun, Yankin
Burnet Institute Myanmar	Ahlon, Dagon Myothit (Seikkan), Dagon Myothit (East), Dagon Myothit (North), Dagon Myothit (South), Hlaingtharya, Kyauktada, Kyeemyindaing, North Okkalapa, Pabedan, Sanchaung, Shwepyithar, South Okkalapa, Tamwe, Thingangyun, Yankin, Latha, Mingalartaungnyunt
International Organization for Migration	Mingaladon, North Okkalapa, Shwepyithar
International Union Against Tuberculosis and Lung Disease/The Union	Thaketa
Marie Stopes International	Thaketa, Thingangyun
Médecins du Monde	Ahlon, Botahtaung, Dagon, Dagon Myothit (North), Dagon Myothit (South), Dagon Myothit (East), Hlaing, Hlaingtharya, Insein, Kamaryut, Kyauktada, Kyeemyindaing, Lanmadaw, Latha, Mayangone, Mingaladon, Mingalartaungnyunt, North Okkalapa, Pabedan, Pazundaung, Sanchaung, Shwepyithar, South Okkalapa, Tamwe, Thaketa, Thingangyun, Yangon City
Médecins Sans Frontières - Holland	Dagon Myothit (South), Dagon Myothit (North), Dawbon, Hlaing, Hlaingtharya, Insein, Mayangone, Mingaladon, North Okkalapa, Shwepyithar, Thaketa, Thingangyun
Myanmar Positive Group	North Okkalapa
Myanmar Red Cross Society	Seikgyikanaungto
Phoenix Association	Hlaingtharya
Population Services International	Ahlon, Bahan, Botahtaung, Dagon, Dagon Myothit (Seikkan), Dagon Myothit (East), Dagon Myothit (North), Dagon Myothit (South), Dala, Dawbon, Hlaing, Hlaingtharya, Insein, Kamaryut, Kyauktada, Kyeemyindaing, Lanmadaw, Latha, Mayangone, Mingaladon, Mingalartaungnyunt, North Okkalapa, Pabedan, Pazundaung, Sanchaung, Seikkan, Shwepyithar, South Okkalapa, Tamwe, Thaketa, Thingangyun, Yankin
Premiere Urgence-Aide Medicale Internationale	Dala, Seikgyikanaungto
Pyi Gyi Khin	Ahlon, Botahtaung, Dagon, Dagon Myothit (North), Dagon Myothit (Seikkan), Hlaing, Kyauktada, Kyeemyindaing, Latha, Mayangone, Mingaladon, North Okkalapa, Sanchaung, Shwepyithar, Yankin
United Nations Children's Fund	Ahlon, Dagon Myothit (North), Hlaing, Hlaingtharya, Insein, Kyeemyindaing, Mayangone, Mingaladon, Mingalartaungnyunt, North Okkalapa, Seikgyikanaungto, Thingangyun, Yankin
KT Care Foundation	Dagon Myothit (North), Hlaingtharya

Partner's Organisations	Township's Name
World Food Programme	Ahlon, Bahan, Botahtaung, Dagon Myothit (East), Dagon Myothit (North), Dagon Myothit (Seikkan), Dagon Myothit (South), Dala, Dawbon, Hlaing, Hlaingtharya, Kamaryut, Kyauktada, Kyeemyindaing, Lanmadaw, Latha, Mingaladon, Mingalartaungnyunt, North Okkalapa, Pabedan, Pazundaung, Sanchaung, Seikgyikanaungto, Shwepyithar, Tamwe, Thaketa, Thingangyun, Yankin, Insein
Medical Action Myanmar	Hlaingtharyar, Shwepyithar

Analysis and gaps

- No examples of baseline data or targets being established.
- The scale and scope of actions were based on funds available
- No information available on indicator definition or size of target groups
- Very few programmes extend beyond the end of 2016, either because of a change in donor policy or short term cycle of funding
- Apart from DFAT supporting the Burnett Institute, there is little donor or multilateral support for urban programmes apart from funding to INGO general fund
- Budgets disaggregated by townships have not been available, including those given to the government's national programmes