

# **Humanitarian IM Activities**

**Myanmar IM Networking Meeting**  
**14 June 2023**

# WHAT IS A FLASH APPEAL?



- A flash appeal is an inter-agency humanitarian response strategy to a major disaster that requires a coordinated response beyond the capacity of the government plus any single agency. The appeal addresses acute needs for a common planning horizon, normally up to six months.
- The Resident and/or Humanitarian Coordinator (RC/HC) triggers the process in consultation with the humanitarian country team (HCT, comprising UN and non-UN partners and actors) and the affected government (though not depending on permission of the government).
- The decision to develop a flash appeal is based on a rapid appraisal of a disaster's scale and severity, compared to available government capacity
- The flash appeal outlines roles and responsibilities, specific sectoral response plans, and activities needing funding.
- It should be issued, as a rapid first edition, within a week of a triggering event.
- It is a concise document based on available information and reasonable inference, focusing on urgent humanitarian needs. (Early recovery projects can be included in this rapid first edition to the extent that they address time-critical needs, have a strong advantage in starting immediately and a rapid impact on affected populations and/or relief activities.)
- A scheduled general revision takes place about a month after the appeal's initial publication to incorporate more complete information, improved and in-depth assessments, and more clearly defined early recovery projects. If considered necessary, the appeal may be developed into or succeeded by a consolidated appeal, or other similar appeal, if an inter-agency response is needed beyond six months.
- Flash appeals should include priority projects from all key humanitarian organizations – UN and non-UN – on the ground. It should take into account the actions and plans of entities not in the appeal (for example government, and – usually – the Red Cross and Red Crescent Movement).

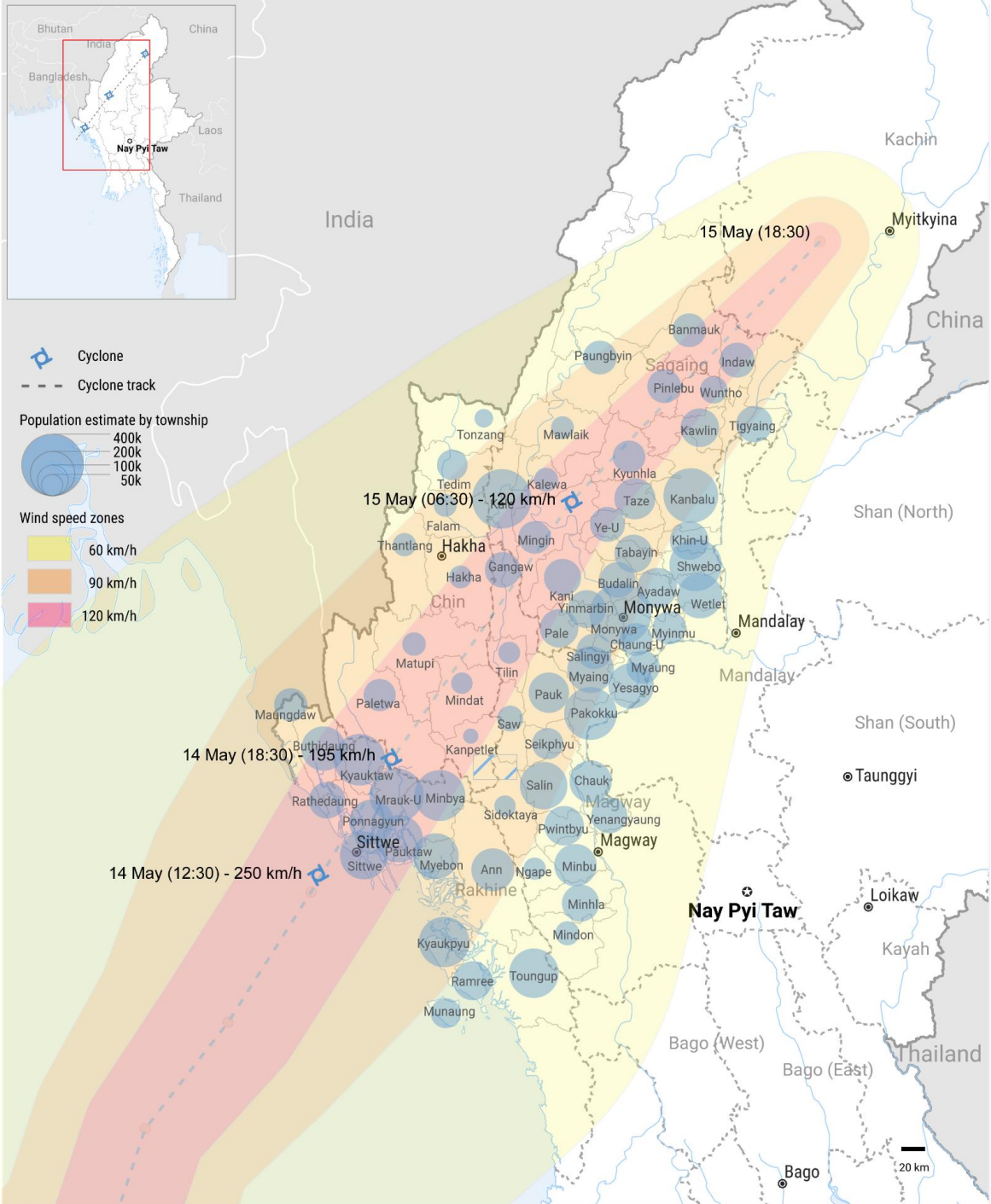
# AFFECTED PEOPLE BY WIND SPEED ZONES

Cyclone Mocha as of 16 May 2023

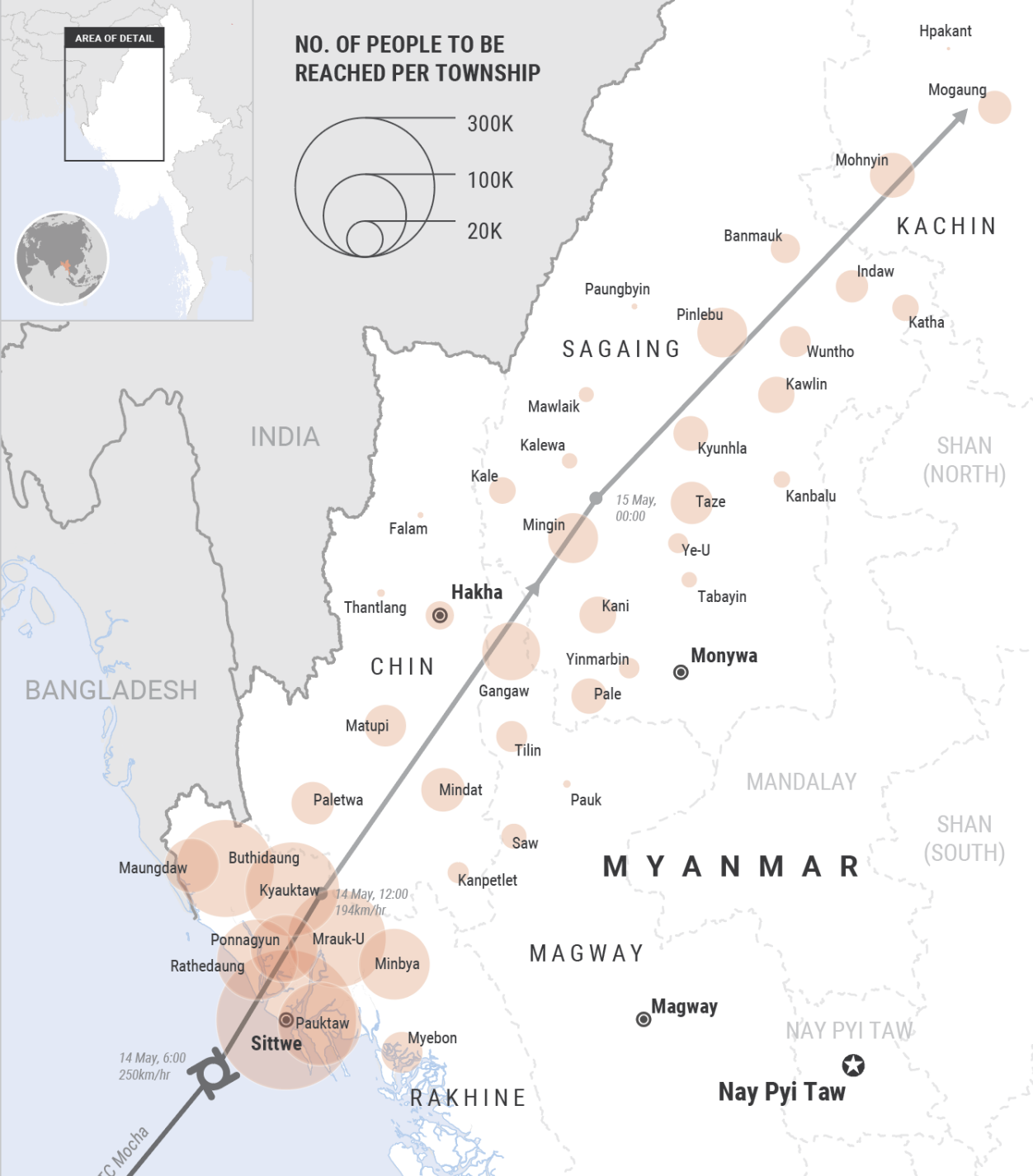
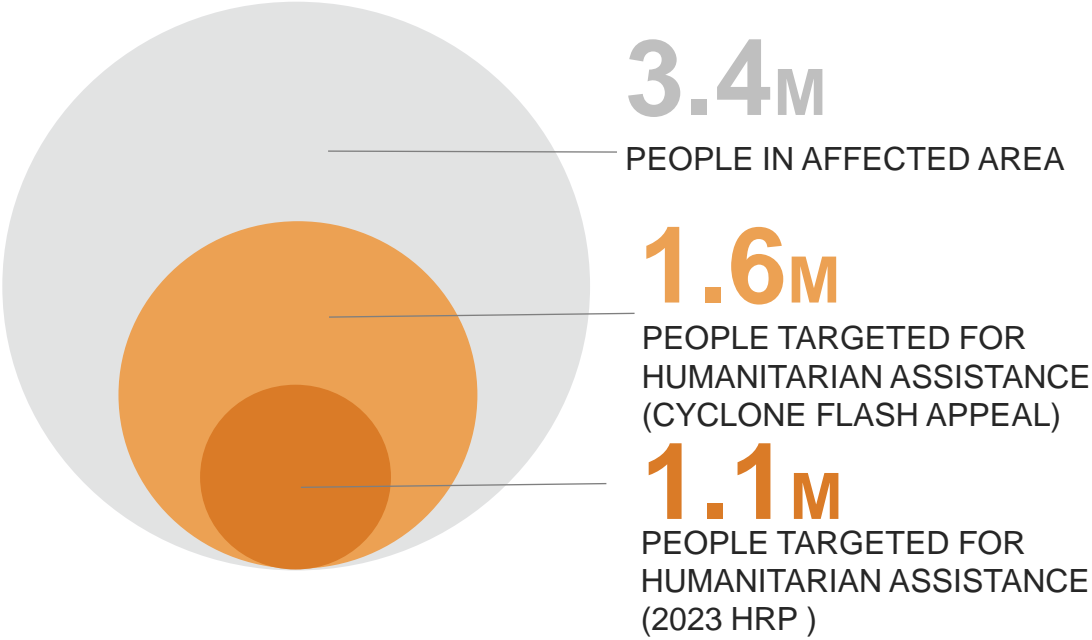
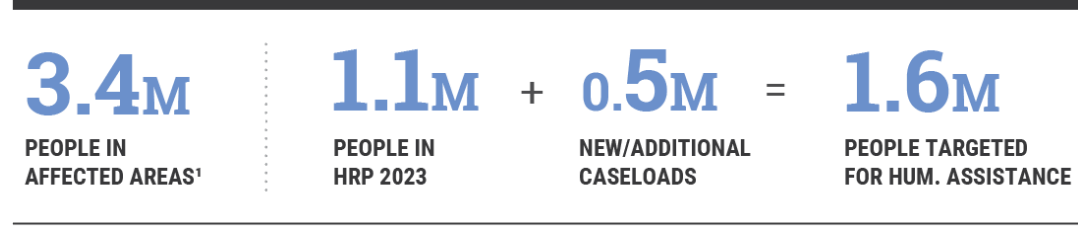
Wind speed zone	# of people
Over 120km/h (64 kt)	3.4M
90-120 km/h (50 kt)	4.5M
60-90km/h (34 kt)	13.5M

 3.4M

PEOPLE LIVING IN THE MOST AFFECTED AREAS  
(120 KM/H+)



# MOCHA FLASH APPEAL OVERVIEW



# KEY NUMBERS – MOCHA FLASH APPEAL



3.4M

PEOPLE IN AFFECTED

AREA



1.6M

PEOPLE

TARGETED



\$333M

FUNDING  
REQUIREMENT  
(US\$)

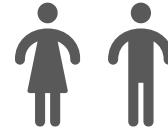
# DISAGGREGATED FIGURES



FEMALE



CHILDREN (<18)



ADULTS (18-60)



ELDERLY (60+)



DISABILITY

---

**1.6M**

PEOPLE  
TARGETED

**824k**

(53%)

**538k**

(34%)

**874k**

(56%)

**153k**

(10%)

**236k**

(15%)

---

# CYCLONE MOCHA

## FLASH APPEAL

### KEY FIGURES

3.4M

PEOPLE IN  
AFFECTED AREA



EDUCATION



FOOD  
SECURITY



HEALTH



NUTRITION



PROTECTION



SHELTER/  
NFI/CCM



WASH



COORD. &  
COMMON  
SERVICES

#### IMMEDIATE PRIORITY GAPS

1.1M + 0.5M = 1.6M

PEOPLE IN  
HRP 2023

NEW/ADD'L  
CASELOAD

TOTAL CYCLONE  
RESPONSE

339K

163K

502K

534K

500K

1M

252K

177K

429K

104K

41K

104K

800K

351K

1.2M

390K

267K

657K

549K

262K

549K

#### TOTAL REQUIREMENTS (US\$)

210.8M + 122.5M = \$333.2M

ALREADY COSTED  
IN HRP 2023

ADDITIONAL  
REQUIREMENTS

TOTAL  
REQUIREMENTS

22.0M

6.5M

28.6M

48.6M

26.1M

74.6M

11.6M

11.5M

23.1M

8.4M

4.3M

12.7M

47.2M

20.7M

67.9M

35.1M

36.1M

71.2M

37.9M

15.2M

53.1M

2M

2M

Thank you! 😊