

MIMU



- MapX Basic Concepts

June 2021

Basic Concepts – MapX

What is?

- MapX is an online open-source application for spatial data visualization
- It is hosted on a Swiss cloud infrastructure
- It is currently available in five languages (English, French, Spanish, Dari & Pashto)
- No programming capacity is required for accessing geospatial data, conducting data analysis, and building story maps
- MapX has been optimized for low Internet bandwidths and connectivity
- MapX has been developed following interoperability standards



What can be displayed?

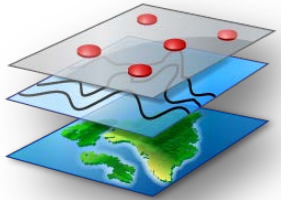
- Spatial data stored in the MapX database (vector)
- Spatial data streamed from external sources (raster and vector)
- Statistical data and charts associated to the geospatial data
- Products for story telling based on spatial data, text, images, videos and whatever other content is needed (story maps)



Basic Concepts – MapX

What is a source layer in MapX:

- Spatial data that can be displayed through the use of views
- A source layer can be stored in MapX (vector layer)
- External repositories (vector and raster layers)
- New vector sources are added through MapX UI and their metadata is managed by their publisher



What is a view in MapX?

- Object that can be selected for visualization through the MapX web interface



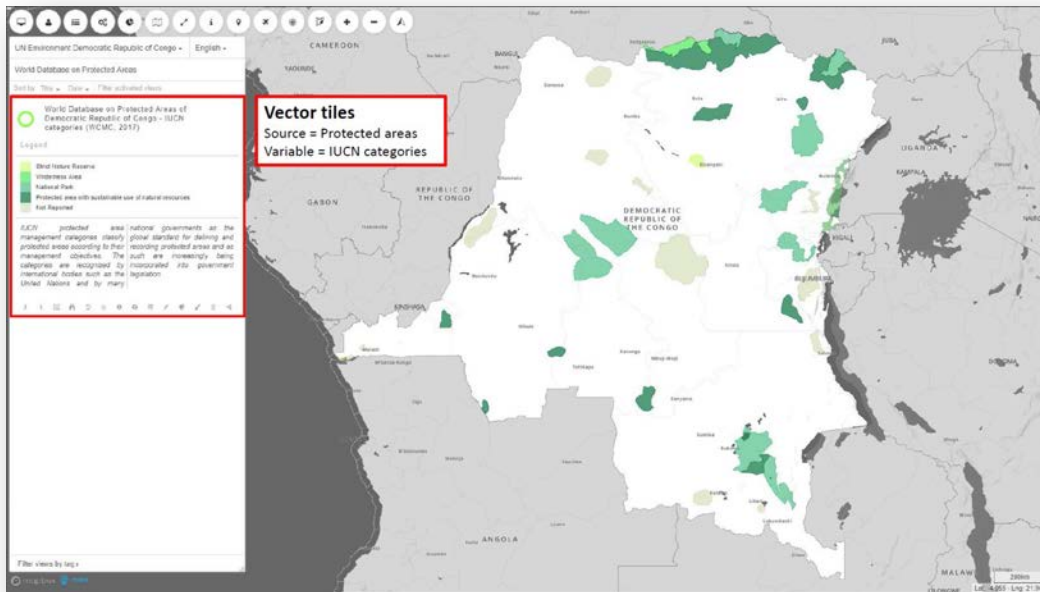
Link between a view and a source layer

- A view is strictly related to one source layer
- Metadata of the source layer can be consulted from view's properties
- If the license/source permits allows it, the source layer can be downloaded from the view

Basic Concepts – MapX

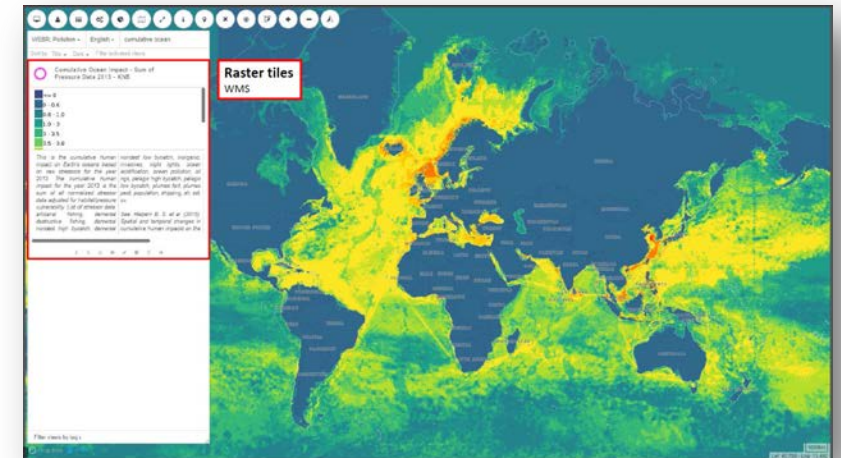
Vector

- Visualization of a vector source layer stored in the MapX database
- A custom style can be created (& edited) with a quick and easy tool
- Multiple functionalities available: access to the attribute table, data download, overlap analysis, filters, time-slider, transparency



Raster

- Raster datasets cannot be stored in the MapX database
- Raster datasets can be fetched via WMS (Web Map Service) or WMTS (Web Map Tile Service) queries
- If available, the legend can be fetched via a GetLegendGraphic query
- Style can not be edited in MapX. Functionalities are considerably reduced for raster tiles compared to vector tiles



Basic Concepts – MapX

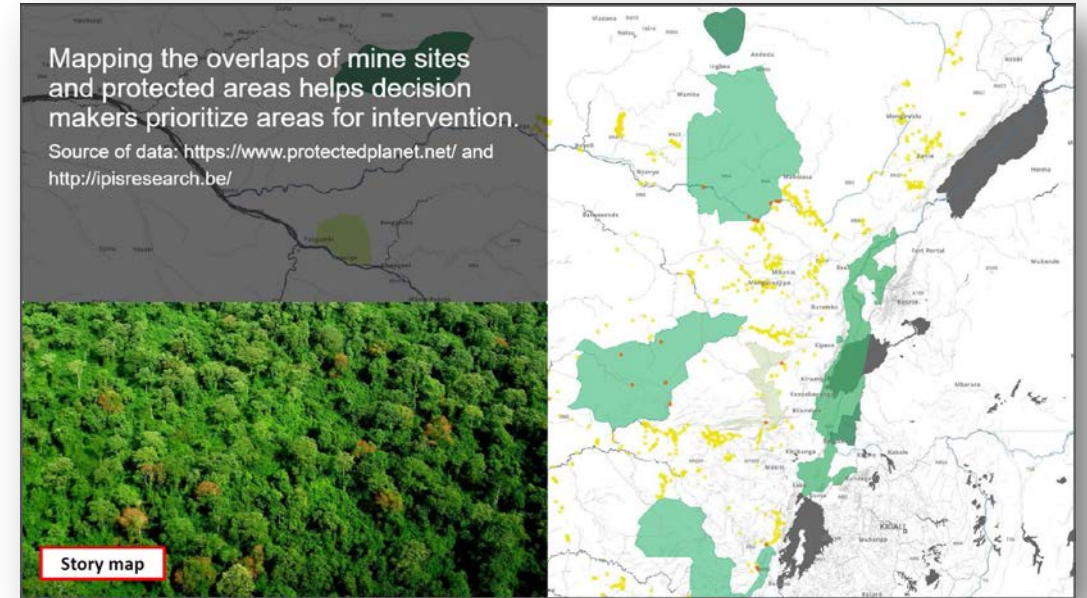
Custom Code

- Advanced type of view where the user codes its own view and legend
- Requires programming skills (JavaScript, HTML, CSS, Mapbox)
- High flexibility and up-to-date data streaming



Story Maps

- Visualization of an ensemble of data, among which views, for telling purposes
- Spatial data, text, images & videos can be used to build a story map



Basic Concepts – MapX

Projects

- MapX offers dedicated environments called “Projects” where users can find geospatial data
- Related to a theme (e.g. biodiversity), a convention (e.g. Minamata), an institution /organization (e.g. UN Electric) or a specific location (e.g. Haiti)
- Can be directly managed by MapX partners or by the MapX Team and can be public or private
- User rights can be set per project



Users

- MapX features multiple and flexible user access levels to datasets, analytical tools as well as data sharing and publication features
- The user management system is secure and offers an incremental approach for each user category
- Each user is assigned a role that defines its access to the application's different components
- Roles are assigned by projects: Public Users, Members, Publishers, Administrators



MIMU - MapX

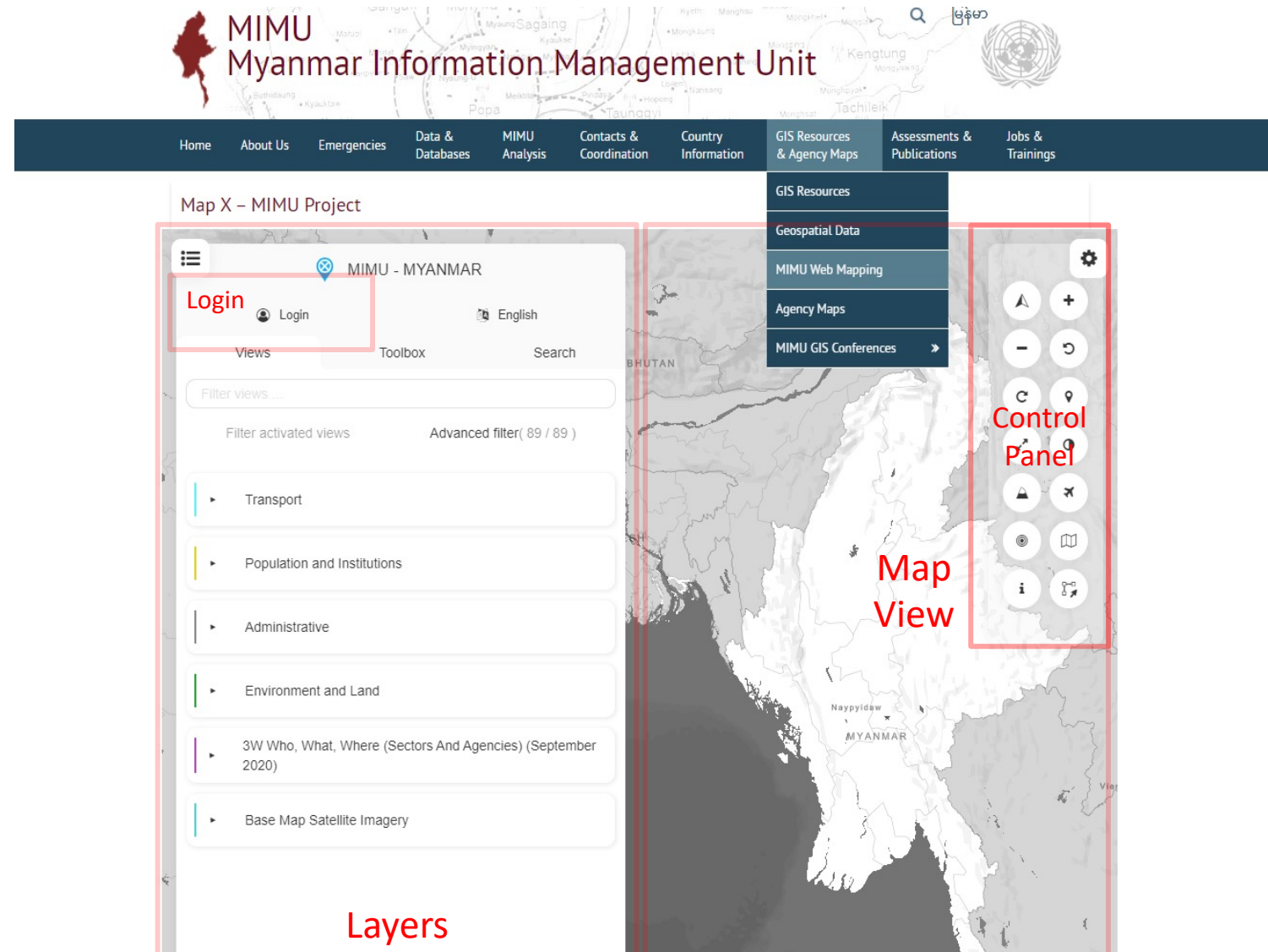
Map X is already integrated into MIMU website

Under the section:

- GIS Resources & Agency Maps
 - MIMU Webmapping

<https://themimu.info/mimu-mapx>

- If the user needs to download available layers, must login
- For that, Click in “Login”, enter the mail account and immediately the user will receive a code in the mailbox to enter



Basic Concepts – Contents of Technical Explanation

- Access to MapX into MIMU Website
- Explanation of the panels
 - Layers
 - Map
 - Control Panel
- Panel Layer
 - Explanation Categories
 - Turn on/off layers
 - Tools of layers
- Map composer
- Login. How to login
 - Benefits of login
 - Create of layers (point, line, polygon)
 - Download specific layers. Notification panel and send to mail
 - Where to download geospatial data