

MIMU



The Myanmar 3W

Comparison Analysis (2020 – May 2021)

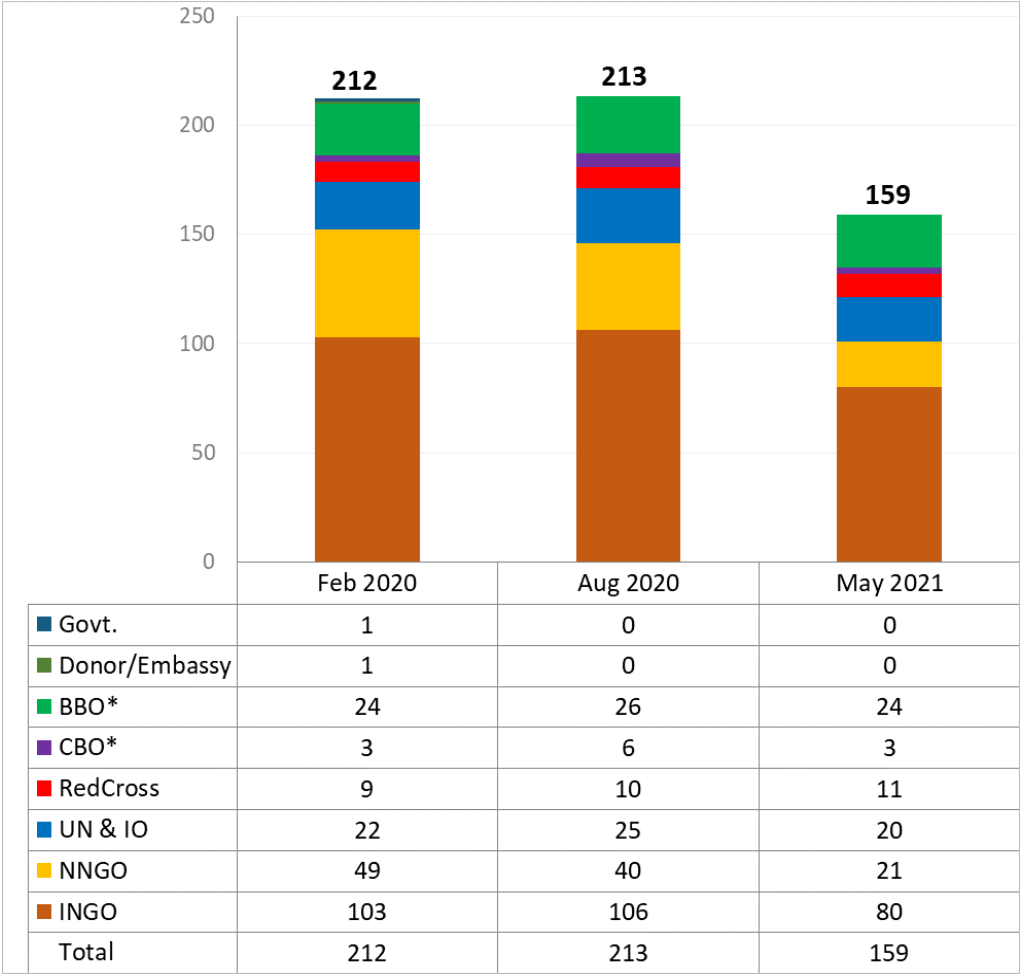
September 2021

3W Comparison Analysis

This analysis reviews the reach of agencies' activities reported in the 3W rounds in 2020 and 2021:

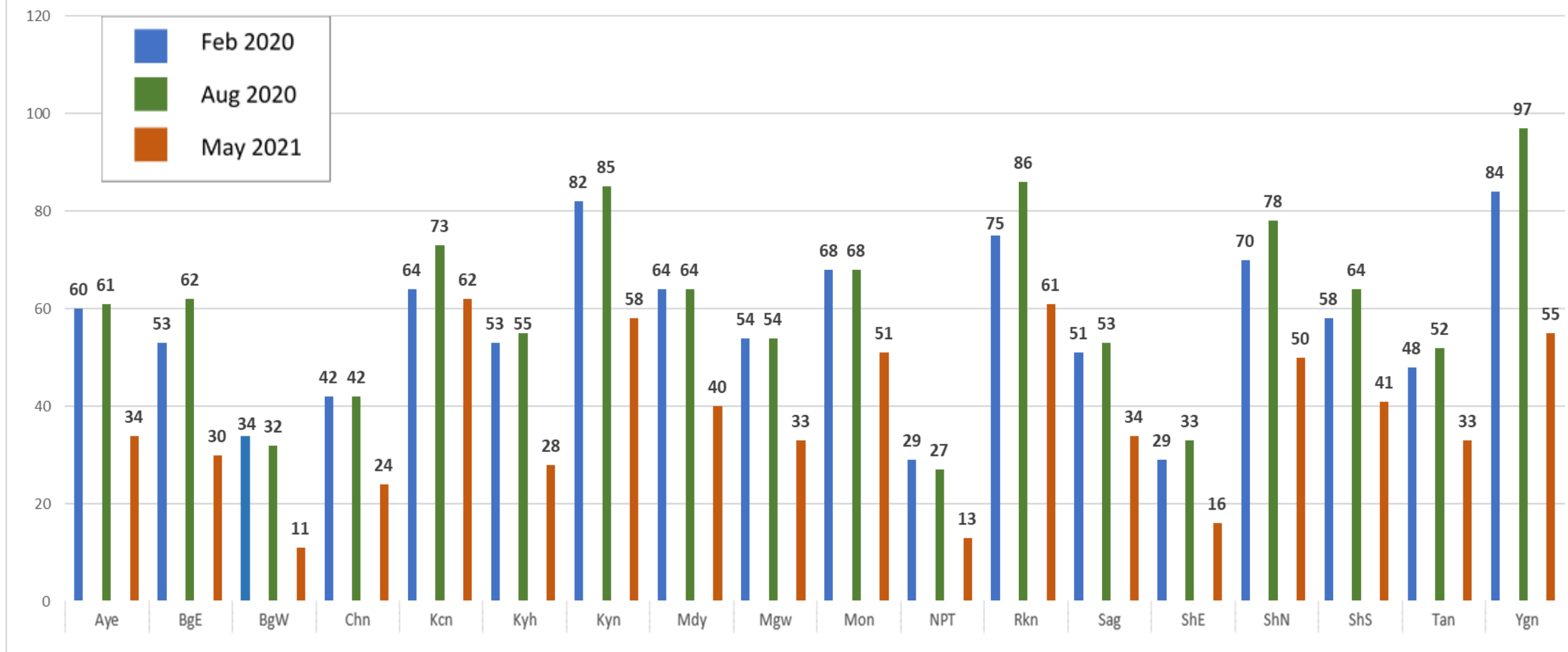
- 1) 3W updates as of **28th February 2020**
- 2) 3W updates as of **28th August 2020**
- 3) 3W updates as of **31st May 2021**

No. of Organizations reporting 3W Updates



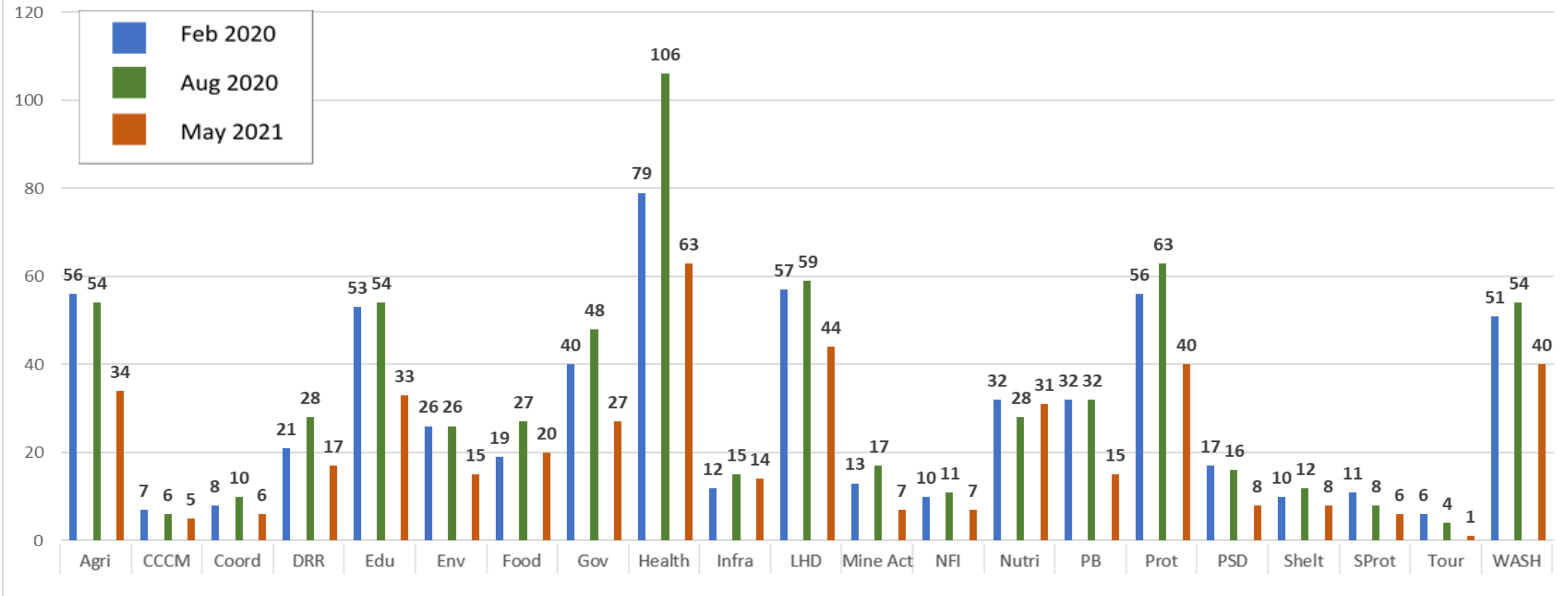
There was a 27% reduction in the number of reporting agencies in May 2021 compared to Aug 2020
(54 less agencies reporting including 26 INGOs, and 19 NNGOs)

Total Number of Organizations by State/Region



Yangon (29 less reporting organizations), followed by Ayeyarwady (26), Kayah (25), Kayin and Mandalay (24 in each), Bago (23), Magway (21) and Shan (north) (20). The lowest change was in Kachin State (only 2 organizations less).

Total Number of Organizations by Sector



Agriculture was the most affected (22 less organizations reporting), followed by the Education Sector (20), Peace Building and Conflict Prevention (17) and Health and Protection (16 in each).

No. of Projects by State/Region

State/ Region	No. of Projects		Difference
	Aug 20	May 21	
Ayeyarwady	120	66	54
Bago	105	47	58
Chin	83	45	38
Kachin	173	148	25
Kayah	97	51	46
Kayin	186	126	60
Magway	104	53	51
Mandalay	128	82	46
Mon	134	101	33
Nay Pyi Taw	53	19	34
Rakhine	192	136	56
Sagaing	98	62	36
Shan	203	96	107
Tanintharyi	112	72	40
Yangon	210	119	91
Grand Total	814	608	206

Comparing the 2021 3W round with the last one in 2020, less activities were reported as Under Implementation (92% in 2020 to 74% in 2021) with higher numbers of activities reported as Completed/Ended (6% to 14%) or Suspended (from 0.4% in 2020 to 10% suspended in 2021).

Project Status	Aug 2020		May 2021	
	No. of Activities per Location	%	No. of Activities per Location	%
Under Implementation	142,674	92%	99,246	74%
Completed/Ended	9,342	6%	18,135	14%
Suspended due to access/security constraints			7,897	6%
Suspended due to funding constraints			191	0.1%
Suspended for other reasons			5,402	4%
Suspended total	674	0.4%	13,490	10%
Planned	1,787	1%	3,022	2%
Grand Total	154,477	100%	133,893	100%

No. of Village Tracts/Towns and Camps by State/Region

State/Region	VTs and Towns				Camps			
	Feb 2020	Aug 2020 (A)	May 2021 (M)	A- M	Feb 2020	Aug 2020 (A)	May 2021 (M)	A- M
Ayeyarwady	1,948	1,952	1,933	19				
Bago (East)	551	532	455	77				
Bago (West)	632	639	588	51				
Chin	485	485	482	3				
Kachin	414	488	406	82	138	135	132	3
Kayah	87	84	72	12				
Kayin	395	394	368	26				
Magway	1,402	1,412	1,233	179				
Mandalay	1,182	1,234	1,113	121				
Mon	402	390	258	132				
Nay Pyi Taw	165	167	136	31				
Rakhine	974	966	814	152	46	46	42	4
Sagaing	1,543	1,641	1,451	190				
Shan (East)	135	155	127	28				
Shan (north)	694	716	618	98	36	35	29	6
Shan (South)	341	393	312	81				
Tanintharyi	285	285	134	151				
Yangon	549	557	484	73				
Grand Total	12,184	12,490	10,984	1,506	220	216	203	13
% of total VTs/Towns and Camps in Myanmar	85%	87%	77%		95%	94%	89%	

The reduction in reach of reported activities since August 2020 was greatest in

- Sagaing (190 less VTs/towns),
- Magway (179),
- Rakhine (152),
- Tanintharyi (151) and
- Mon (132).

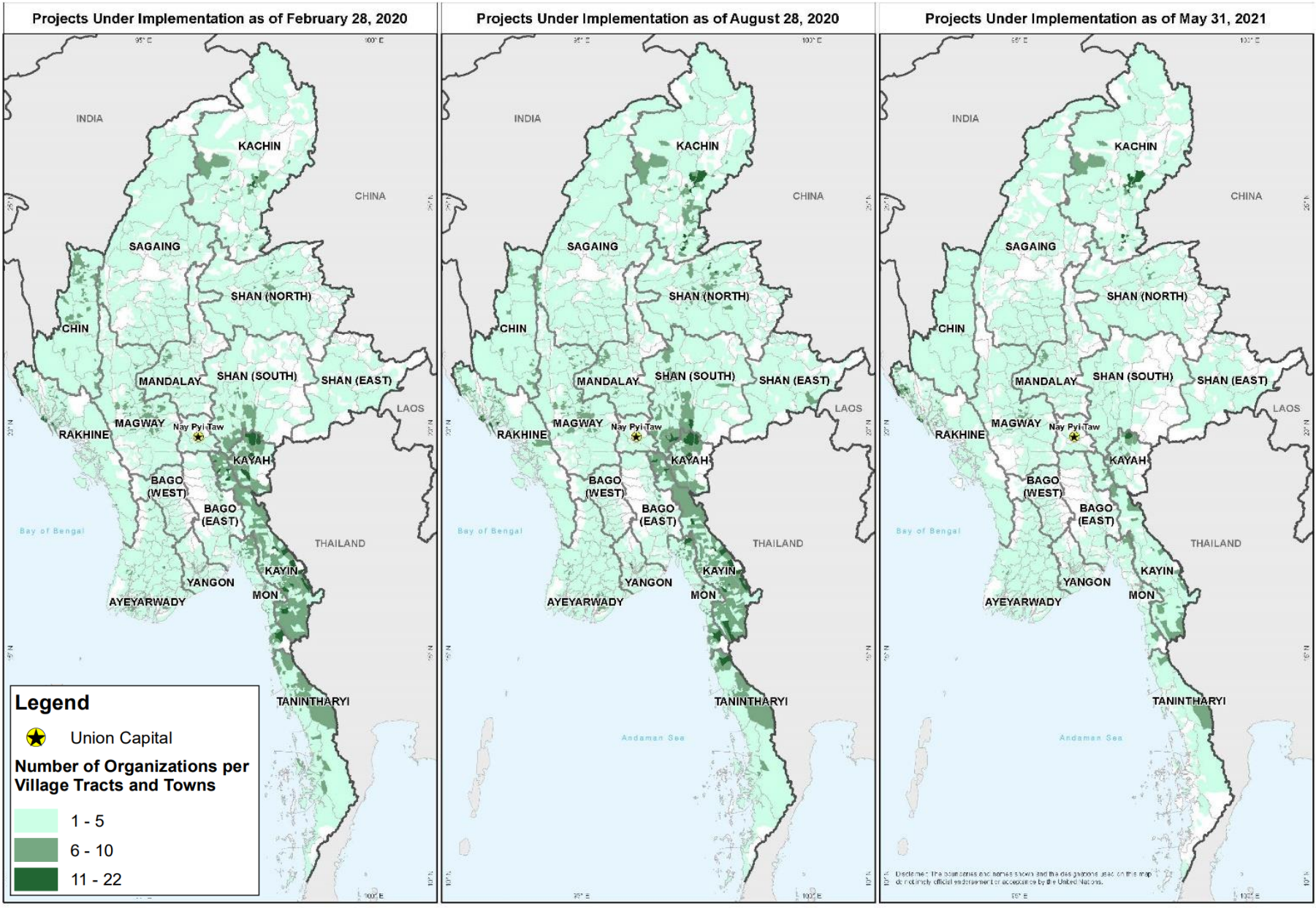
No. of Village Tracts/Towns and Camps by Sector

Sector	VTs and Towns			Camps		
	Aug 2020 (A)	May 2021 (M)	A-M	Aug 2020 (A)	May 2021 (M)	A-M
Agriculture	7,668	6,932	736	26	23	3
CCCM	163	81	82	163	154	9
Coordination	99	77	22			
Disaster Risk Reduction	254	206	48	11	3	8
Education	2,169	556	1,613	62	79	-17
Environment	1,349	715	634			
Food	293	378	-85	152	144	8
Governance	950	464	486	7	0	7
Health	5,468	3,398	2,070	161	111	50
Infrastructure	429	120	309		8	-8
Livelihoods	6,719	5,394	1,325	118	97	21
Mine Action	504	337	167	25	23	2
Non-Food Items	106	47	59	37	19	18
Nutrition	939	1,106	-167	151	135	16
Peace Building/ Conflict Prevention	214	61	153	98	84	14
Private Sector Development	95	21	74			
Protection	1,837	1,165	672	191	140	51
Responsible Tourism	22	0	22			
Shelter	120	83	37	157	155	2
Social Protection	73	28	45	19	16	3
WASH	2,359	482	1,877	127	151	-24

A significant decrease in the reported reach of all sectors other than Nutrition, Food and Coordination – the reduction was greatest in

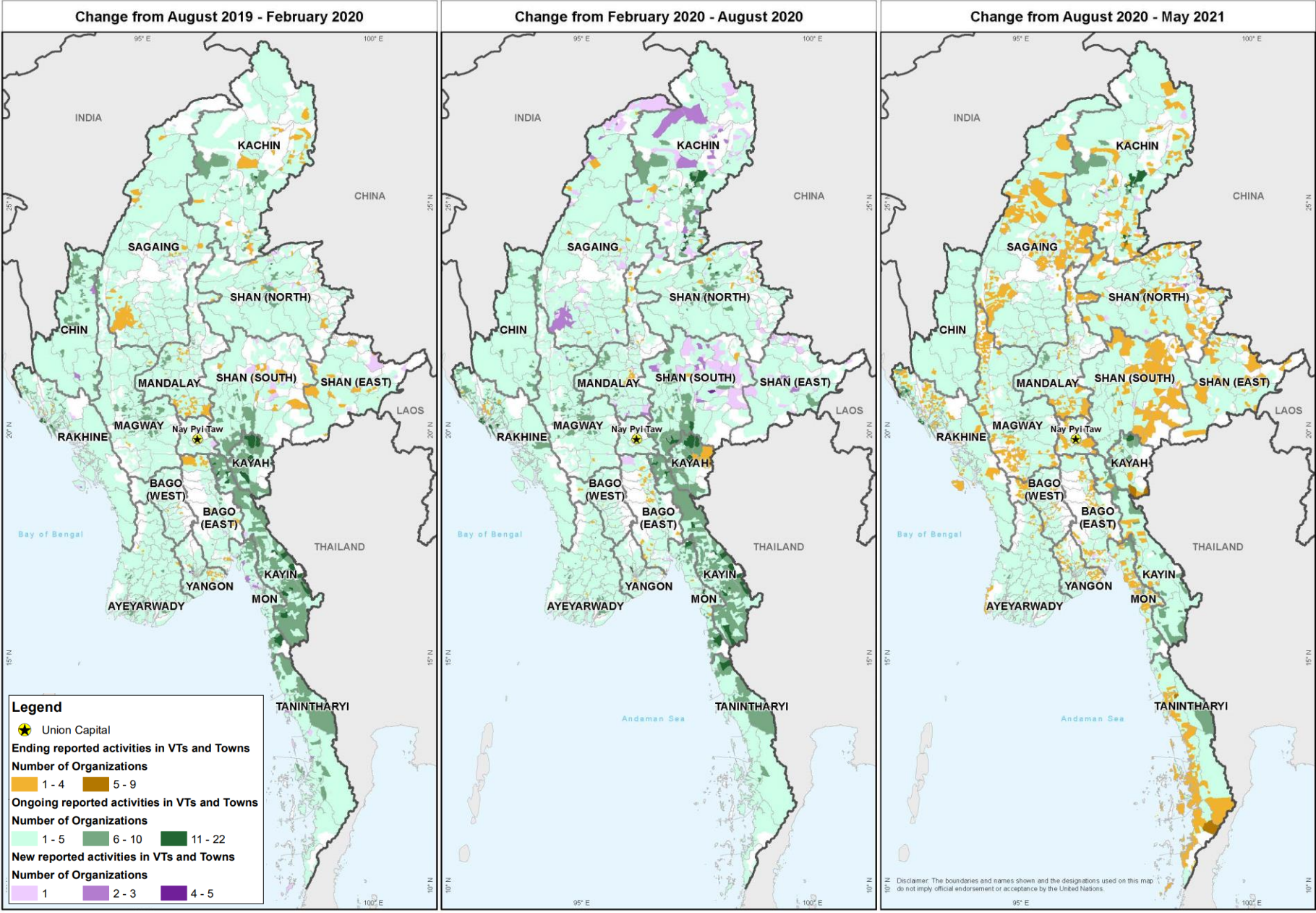
- WASH (80%, 1,877 less village tracts/towns),
- Education (74%, 1,613),
- Health (38%, 2,070) and
- Livelihoods (20%, 1,325).

Number of Organizations reporting Projects under implementation by Village Tract



	Total VTs	VTs with activities	%
Feb 20	1,4304	12,184	85
Aug 20	1,4304	12,490	87
May 21	1,4303	10,984	77

Change in reported activities by Village Tract



MIMU Weblinks to access the MIMU 3W Products

1. [Comparison Analysis](#)
2. Overviews
 - [Countrywide Overview](#)
 - [Rakhine Overview](#) and [One-Pager](#)
 - [Kachin Overview](#) and [One-Pager](#)
 - [Southeastern Myanmar Overview](#)
 - [Shan One-Pager](#)
3. Dashboards
 - [Township Dashboard](#)
 - [Village Tract Dashboard](#)
4. Project Focus Maps
 - [Rakhine](#)
 - [Kachin](#)
 - [Shan](#)
5. [Other Static Maps at Township and Village Tract Level](#)
6. 3W data in Excel (Limited distribution - Available on request)

Tentative Schedule of the next 3W round

Thank you for your attention!

MIMU



Myanmar Information Management Unit

The Office of the UN RC/HC

First Floor, No. 5, Kanbawza Street, Bahan Township, Yangon.



Ei Ei Thein

Data Manager

Email : ei.ei.thein@undp.org

Mobile : 09-451655539