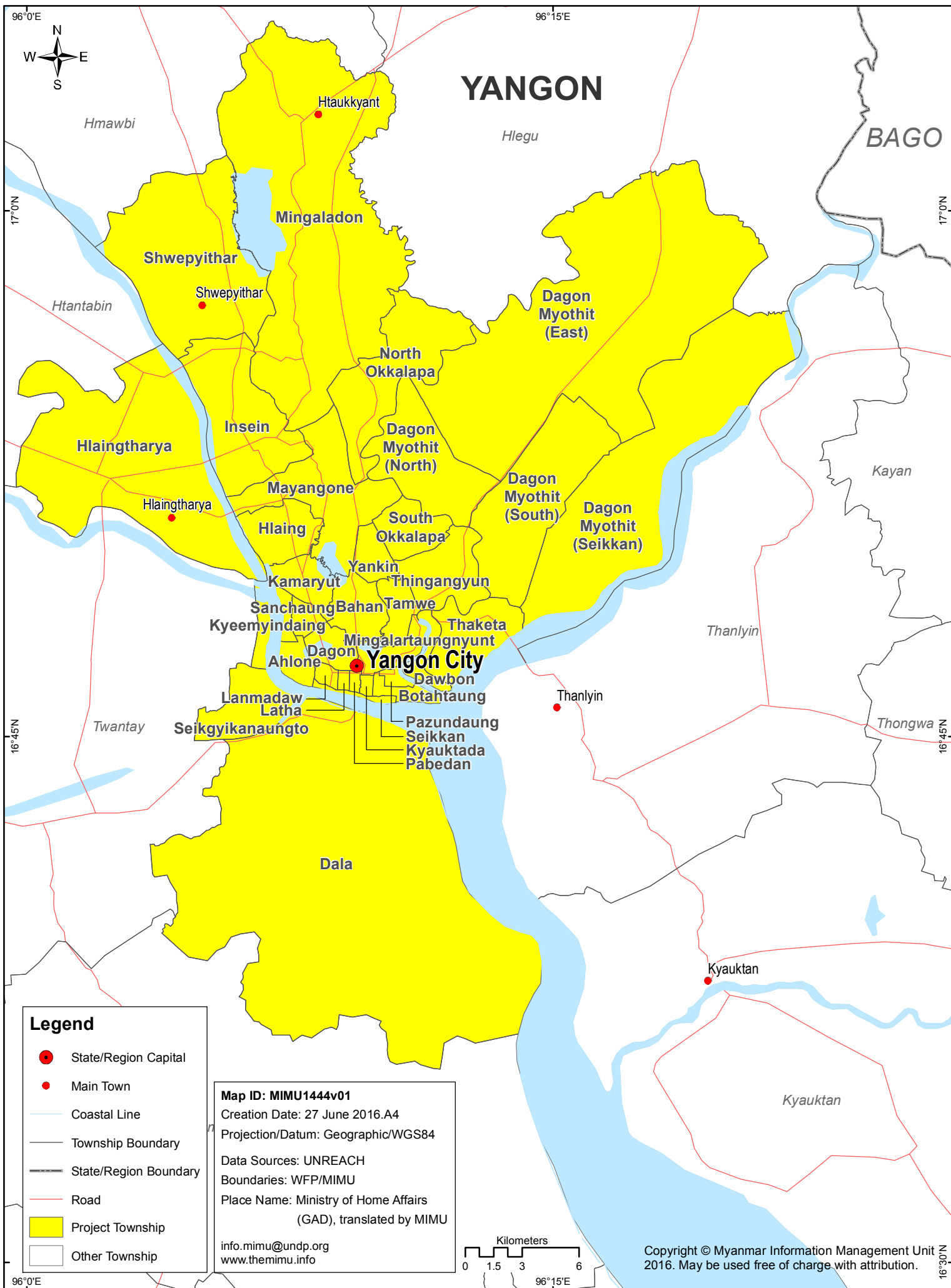


Prevention and Management of Soil, Food and Water Borne, and Endemic Disease



Partner's Organisations	Township's Name
Association François-Xavier Bagnoud	Ahlone, Bahan, Botahtaung, Dagon, Dagon Myothit (North), Dagon Myothit (South), Dala, Dawbon, Hlaing, Hlaingtharya, Insein, Kamaryut, Kyauktada, Lanmadaw, Latha, Mayangone, Mingaladon, Mingalartaungnyunt, North Okkalapa, Pabedan, Pazundaung, Sanchaung, Shwepyithar, South Okkalapa, Tamwe, Thaketa, Thingangyun, Yankin
Burnet Institute Myanmar	Ahlone, Dagon Myothit (Seikkan), Dagon Myothit (East), Dagon Myothit (North), Dagon Myothit (South), Hlaingtharya, Kyauktada, Kyeemyindaing, North Okkalapa, Pabedan, Sanchaung, Shwepyithar, South Okkalapa, Tamwe, Thingangyun, Yankin, Latha, Mingalartaungnyunt
International Organization for Migration	Mingaladon, North Okkalapa, Shwepyithar
International Union Against Tuberculosis and Lung Disease/The Union	Thaketa
Marie Stopes International	Thaketa, Thingangyun
Médecins du Monde	Ahlone, Botahtaung, Dagon, Dagon Myothit (North), Dagon Myothit (South), Dagon Myothit (East), Hlaing, Hlaingtharya, Insein, Kamaryut, Kyauktada, Kyeemyindaing, Lanmadaw, Latha, Mayangone, Mingaladon, Mingalartaungnyunt, North Okkalapa, Pabedan, Pazundaung, Sanchaung, Shwepyithar, South Okkalapa, Tamwe, Thaketa, Thingangyun, Yangon City
Médecins Sans Frontières - Holland	Dagon Myothit (South), Dagon Myothit (North), Dawbon, Hlaing, Hlaingtharya, Insein, Mayangone, Mingaladon, North Okkalapa, Shwepyithar, Thaketa, Thingangyun
Myanmar Positive Group	North Okkalapa
Myanmar Red Cross Society	Seikgyikanaungto
Phoenix Association	Hlaingtharya
Population Services International	Ahlone, Bahan, Botahtaung, Dagon, Dagon Myothit (Seikkan), Dagon Myothit (East), Dagon Myothit (North), Dagon Myothit (South), Dala, Dawbon, Hlaing, Hlaingtharya, Insein, Kamaryut, Kyauktada, Kyeemyindaing, Lanmadaw, Latha, Mayangone, Mingaladon, Mingalartaungnyunt, North Okkalapa, Pabedan, Pazundaung, Sanchaung, Seikkan, Shwepyithar, South Okkalapa, Tamwe, Thaketa, Thingangyun, Yankin
Premiere Urgence-Aide Medicale Internationale	Dala, Seikgyikanaungto
Pyi Gyi Khin	Ahlone, Botahtaung, Dagon, Dagon Myothit (North), Dagon Myothit (Seikkan), Hlaing, Kyauktada, Kyeemyindaing, Latha, Mayangone, Mingaladon, North Okkalapa, Sanchaung, Shwepyithar, Yankin
United Nations Childrens Fund	Ahlone, Dagon Myothit (North), Hlaing, Hlaingtharya, Insein, Kyeemyindaing, Mayangone, Mingaladon, Mingalartaungnyunt, North Okkalapa, Seikgyikanaungto, Thingangyun, Yankin
KT Care Foundation	Dagon Myothit (North), Hlaingtharya

Partner's Organisations	Township's Name
World Food Programme	Ahlone, Bahan, Botahtaung, Dagon Myothit (East), Dagon Myothit (North), Dagon Myothit (Seikkan), Dagon Myothit (South), Dala, Dawbon, Hlaing, Hlaingtharya, Kamaryut, Kyauktada, Kyeemyindaing, Lanmadaw, Latha, Mingaladon, Mingalartaugnyunt, North Okkalapa, Pabedan, Pazundaung, Sanchaung, Seikgyikanaungto, Shwepyithar, Tamwe, Thaketa, Thingangyun, Yankin, Insein
Medical Action Myanmar	Hlaingtharyar, Shwepyithar