

2019 Inter-Censal Survey

Objectives

- To estimate the country's population and socio-economic statistics between 2014 and 2024 period
- To determine population growth, changes in population structure in terms of age and sex distribution and other socio-demographic and economic characteristics of the population as compared with 2014 Census
- To use Inter-censal Survey data as inputs for evidence-based plans for the development of the country (for example: Myanmar Sustainable Development Plan – MSDP)

Four Major Phases

Preparatory Work
(June, 2018 to October, 2019)

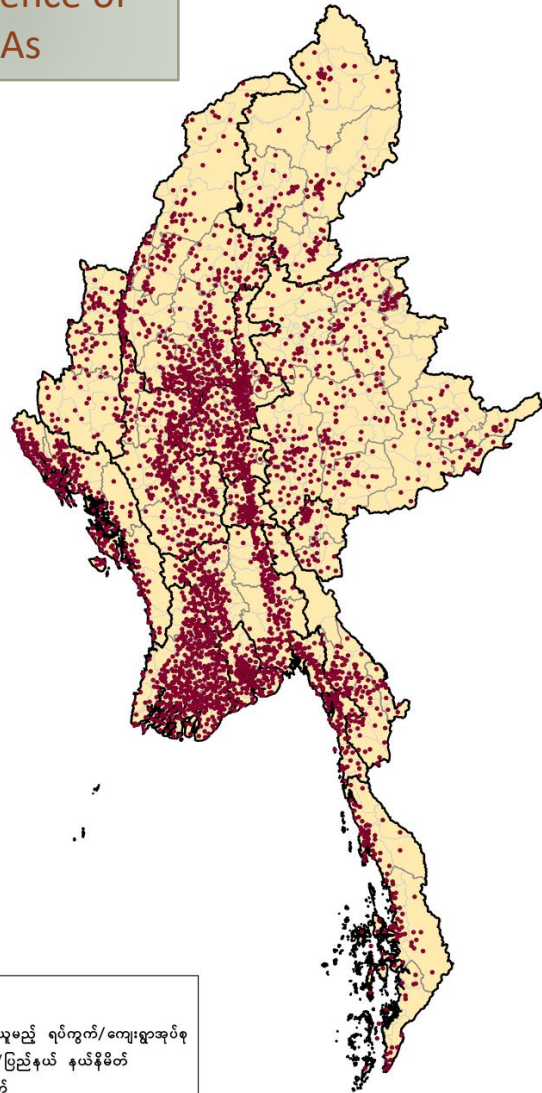
Field Operations
(November, 2019 to January, 2020)

Data Processing
(December, 2019 to September, 2020)

**Data Analysis, Survey Products and
Dissemination (June to November, 2020)**

Facts and Figures

Prevalence of
EAs



■ The 2019 ICS was collected nationwide ...

- Number of Enumeration Areas(EA) 3,960
- Number of Households 132,092
- Population 548,553

■ Available Indicators

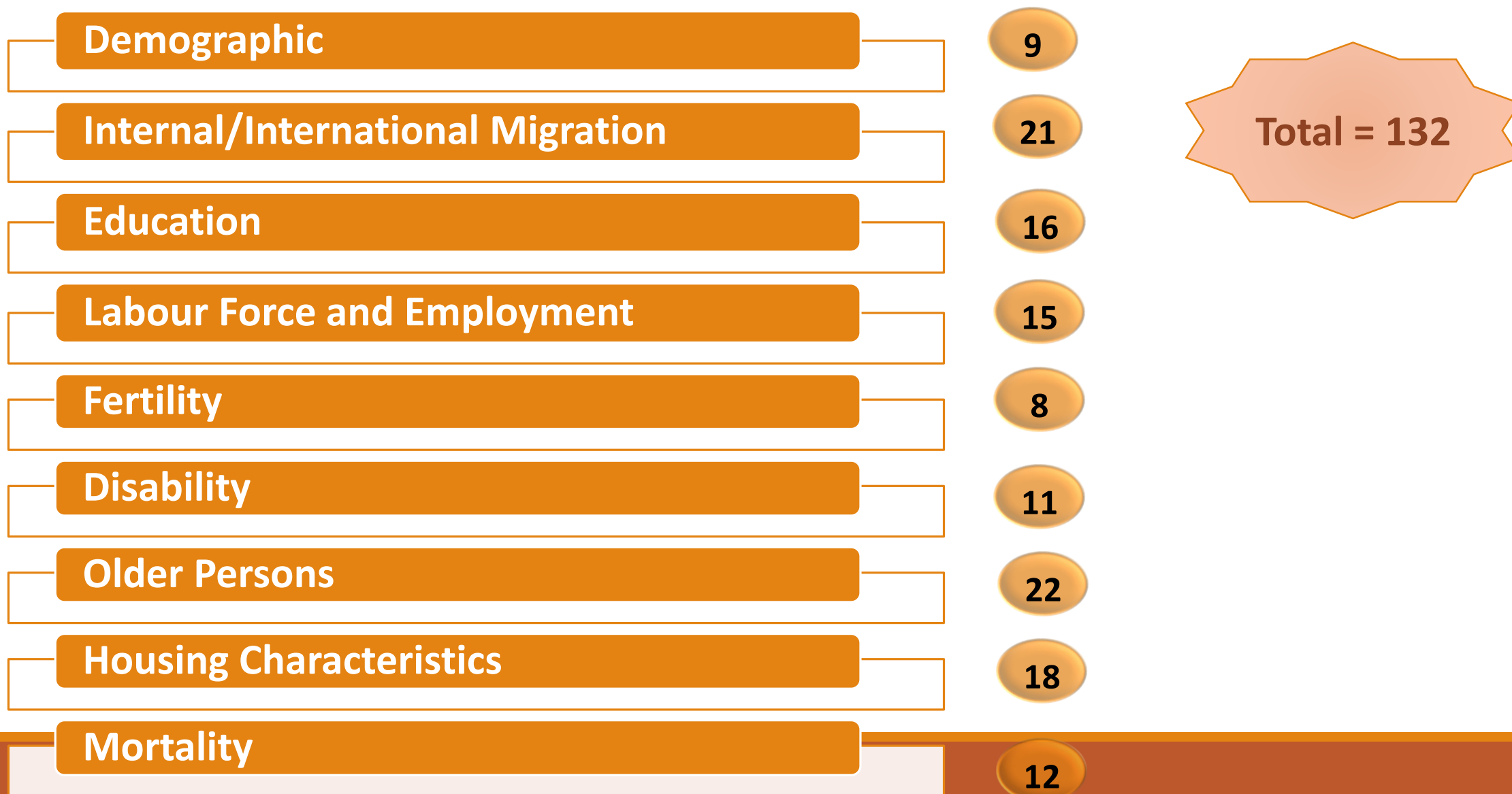
- Union
- Urban/Rural
- State/Region Level
- District Level

Status of Enumeration								
State/Region	Sample EAs			Enumerated EAs			Non-enumerated EAs	
	Urban	Rural	Total	Urban	Rural	Total	Total	(%)
Kachin	58	115	173	58	110	168	5	2.9
Kayah	16	52	68	16	50	66	2	2.9
Kayin	55	128	183	55	115	170	13	7.1
Chin	23	75	98	21	60	81	17	17.4
Sagaing	91	408	499	91	407	498	1	0.2
Tanintharyi	36	110	146	36	109	145	1	0.7
Bago	72	277	349	72	273	345	4	1.2
Magway	47	296	343	47	293	340	3	0.9
Mandalay	141	353	494	141	349	490	4	0.8
Mon	39	112	151	39	110	149	2	1.3
Rakhine	37	236	273	21	51	72	201	73.6
Yangon	286	121	407	286	120	406	1	0.3
Shan	130	399	529	127	303	430	99	18.7
Ayeyarwaddy	63	424	487	63	423	486	1	0.2
Naypyitaw	31	85	116	30	84	114	2	1.7
Total	1125	3191	4316	1103	2857	3960	356	8.3

The effects of non-enumeration in Rakhine state

- Out of 273 total sampled EAs, only 72 EAs were able to be enumerated which account 25% of total sampled EAs.
- All EAs in Myauk U and Maungdaw districts could not be conducted totally. So, it is not possible to produce district level indicators.
- In Sittwe and Kyaukpyu districts, only few EAs could be conducted and it's not possible to produce district level indicators.
- Therefore, the data for state level do not represent for the whole Rakhine state.

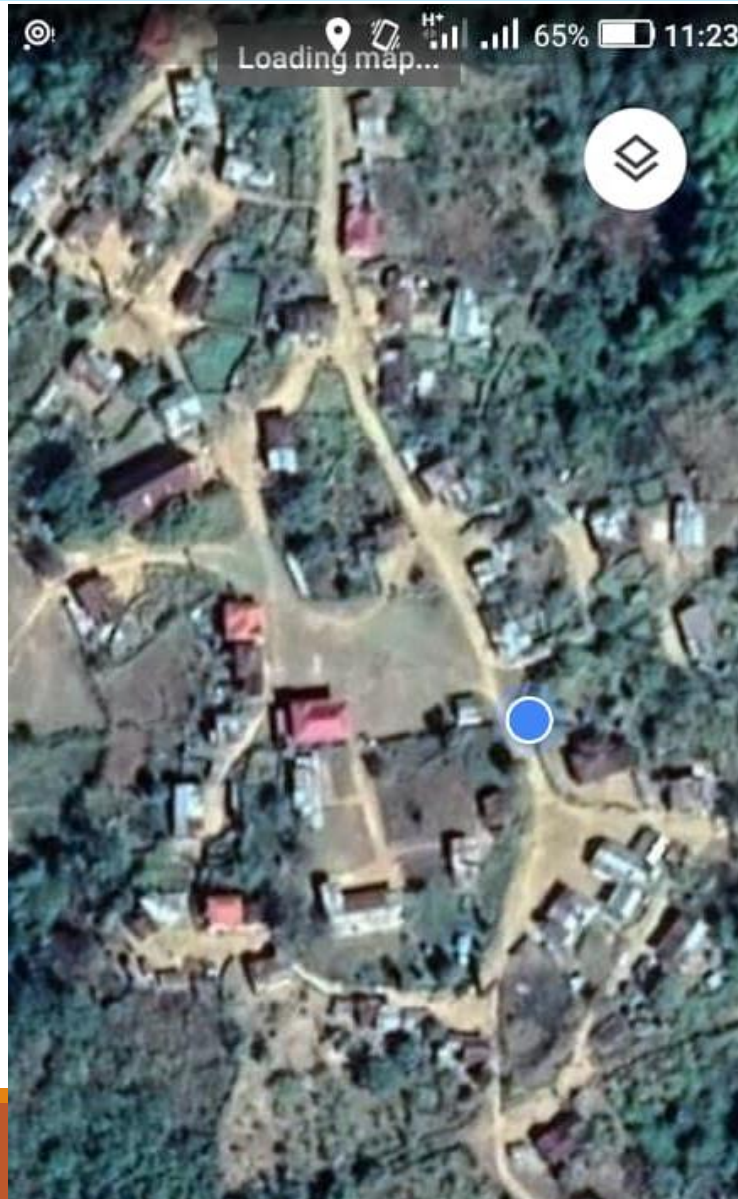
Available Indicators



Process and Methodology

- ◆ The questionnaire of 2019 ICS contains 110 questions.
- ◆ Mobile tablet using Computer Assisted Personal Interviewing (CAPI) system
- ◆ The draft of the Main Report developed and waiting for endorsement
- ◆ The information from the survey can support the COVID – 19 response as a base-line.
- ◆ 2019 ICS was conducted just before COVID – 19 started, thus it is possible to analyse the situation before and after

Mapping, Structure Listing and Digitalization



Available Information

- ◆ Summary of Indicators
- ◆ Population Characteristics
- ◆ Education
- ◆ Labour Force
- ◆ Migration
- ◆ Fertility and Mortality
- ◆ Disability
- ◆ Older Population
- ◆ Housing
- ◆ WASH

Notes:

- ◆ Sample Survey; Not Census
- ◆ Information on 2019 is based on conventional household populations only.
- ◆ Most of the indicators are available down to the district levels
- ◆ Weighted numbers



1

Provisional Results

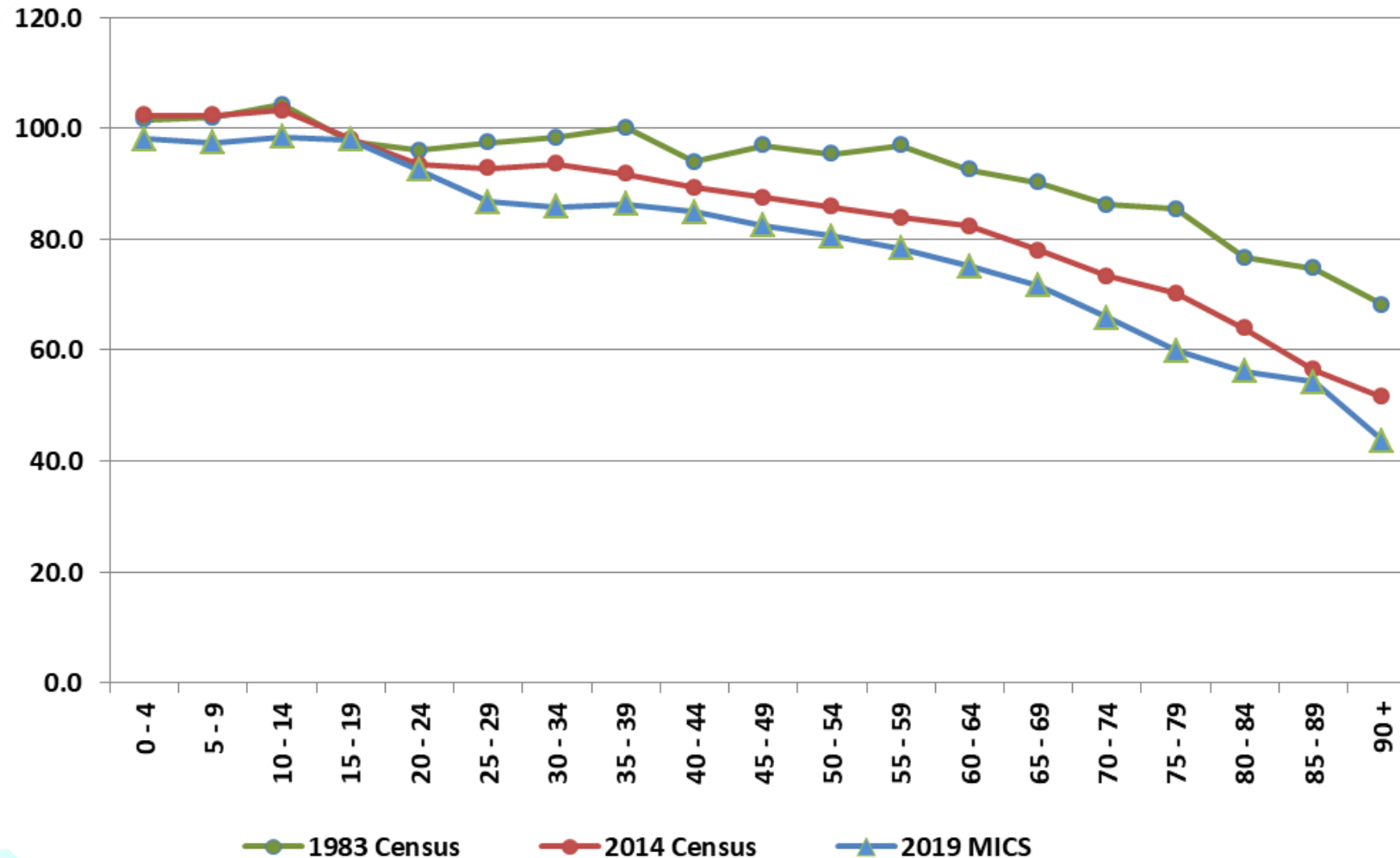
Population Characteristics

Growth Rate

	1983 Census* (millions)	2014 Census* (millions)	2019 ICS* (millions)
Conventional Household Population	33.7	47.9	51.1
Annual Growth Rate	2.02	0.89	0.88

* 2019 ICS conducted only conventional households.

Sex Ratios (Number of males per 100 females)



1983 = 98.6

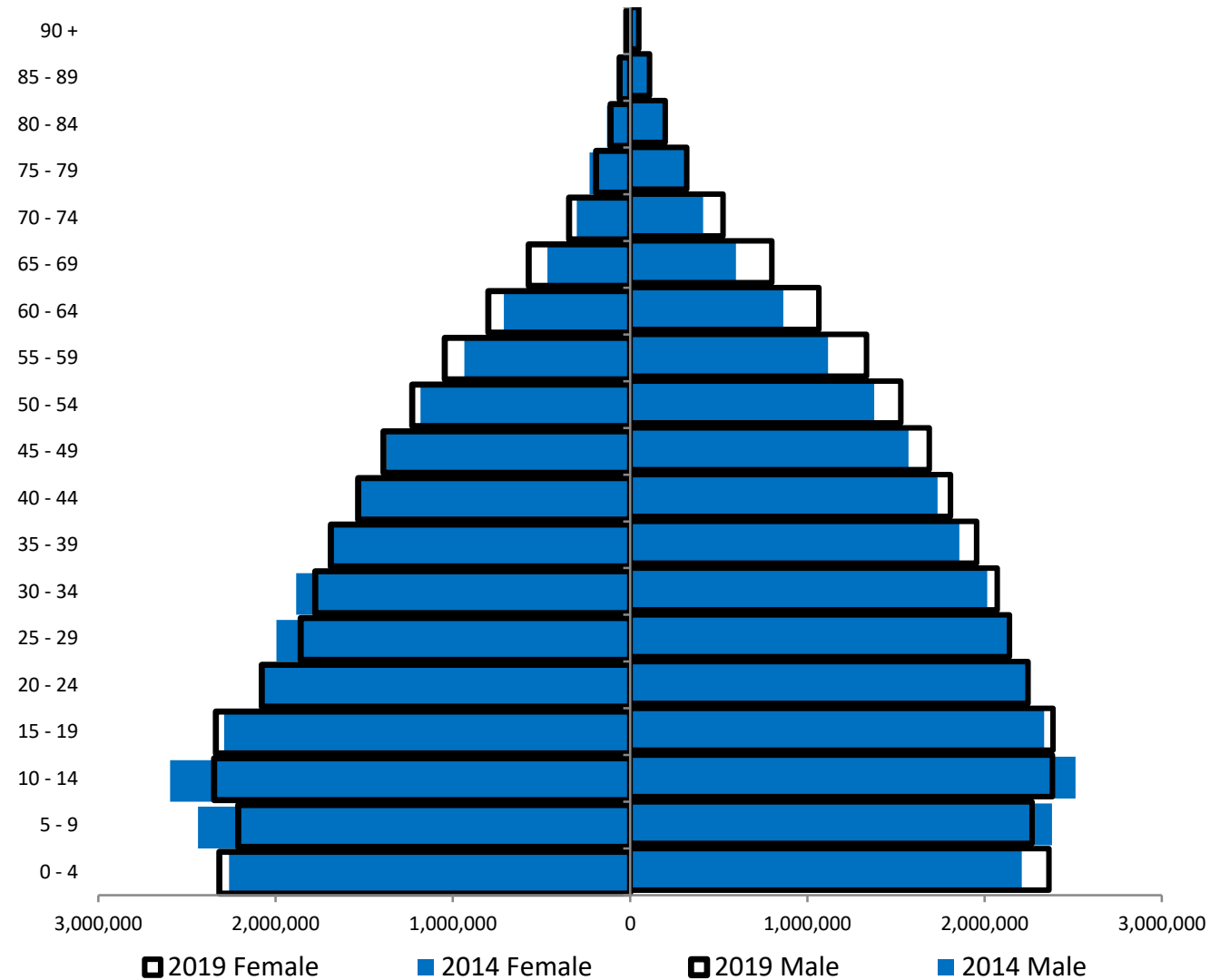
2014 = 93.0

2019 = 88*

* Based on conventional households only.

Age Structure

Age group	1983 Census	2014 Census	2019 ICS
0-14	38.6	28.6	27.2
15-64	57.5	65.6	66.4
65+	3.9	5.8	6.4
Median age	20.2	27.1	28.2

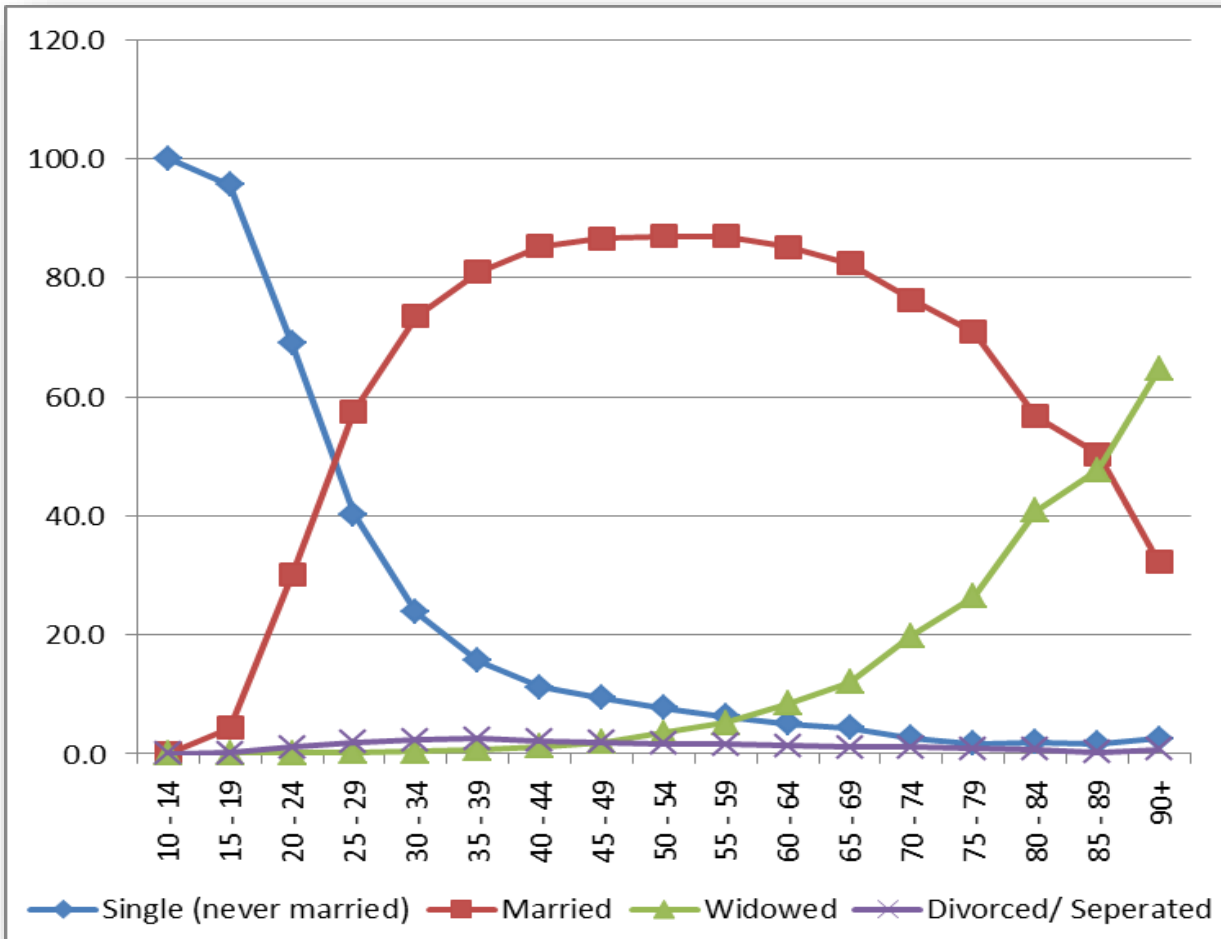


Dependency ratio

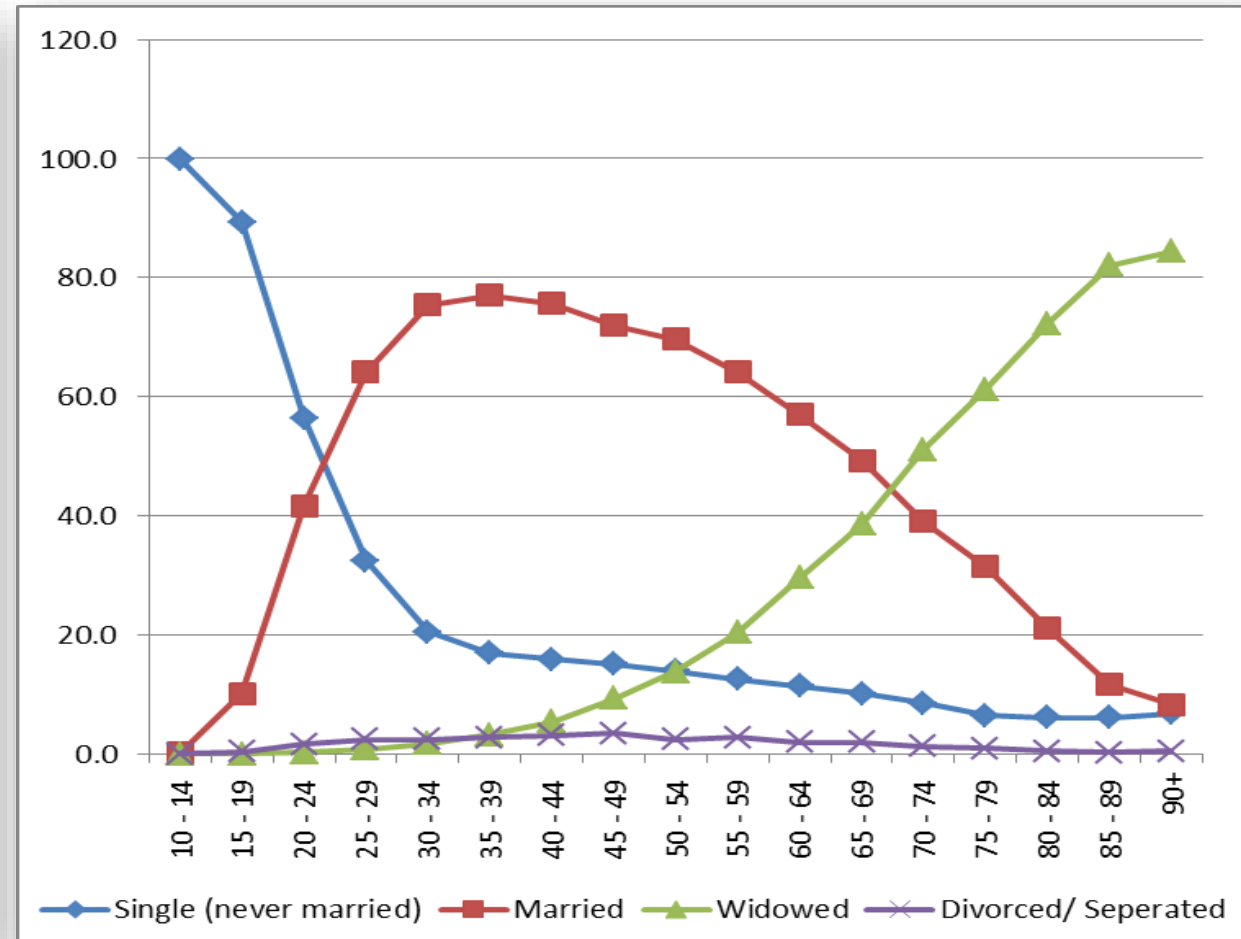
	1983 Census	2014 Census	2019 ICS
Total dependency ratio	73.9	52.5	50.6
Child dependency ratio (0-14)	67.1	43.7	40.9
Old dependency ratio (65+)	6.8	8.8	9.7
Ageing index	10.2	20.1	23.7

Marital Status

Male



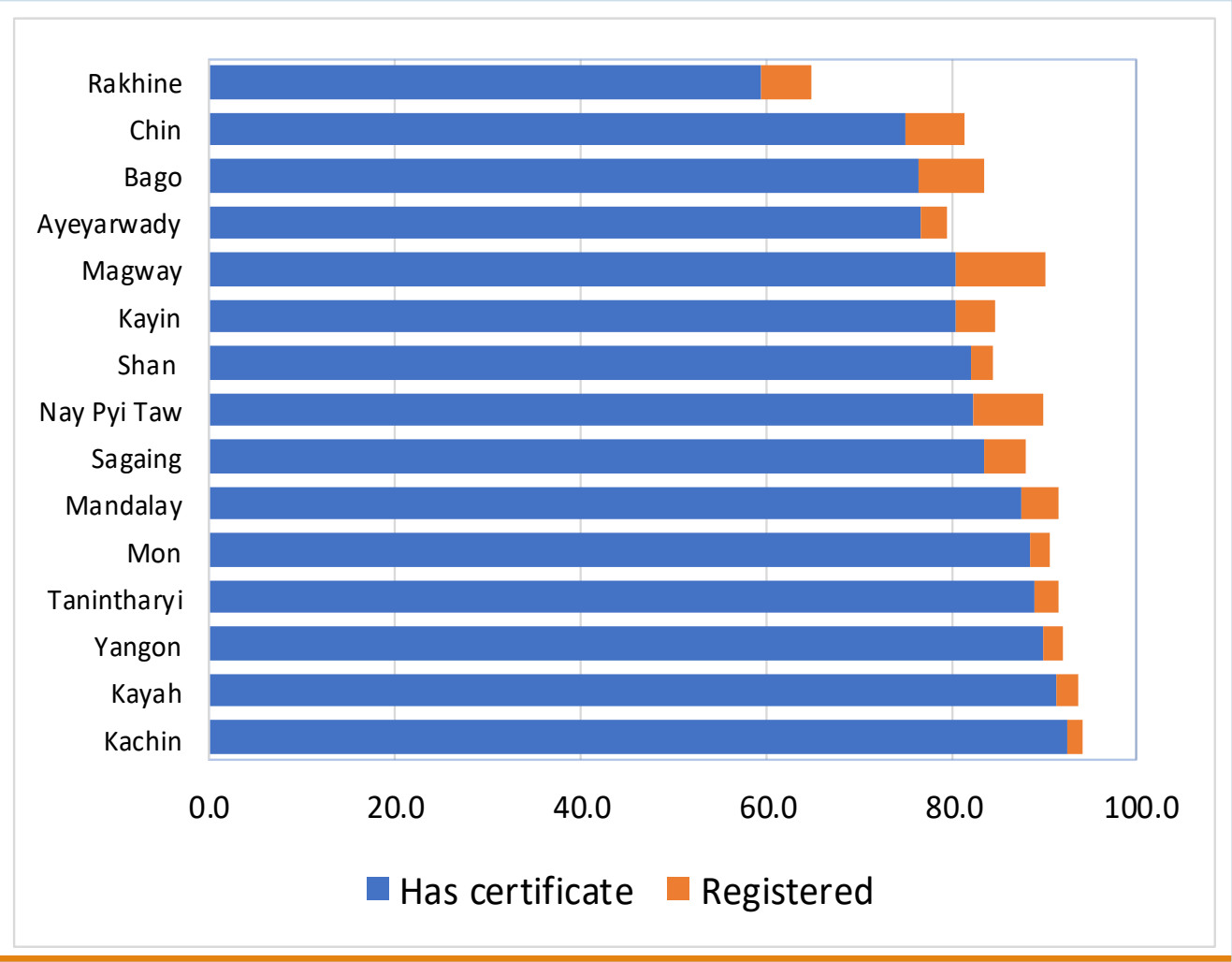
Female



Household size and Head of Household

Household Size	1983 Census	2014 Census	2019 ICS
1 person	4.1	4.6	5.5
2 persons	9.1	12.4	13.9
3 persons	13.7	19.9	22.6
4 persons	16.0	21.3	24.5
5 persons	15.8	16.5	16.7
6 persons	13.7	10.9	9.5
7 persons and more	27.6	14.3	9.8
Average Household size	5.2	4.4	4.6
Female Headed Households(%)	20.8	23.7	23.2

Birth Registration



Birth Registration	Union	Urban	Rural
Has certificate	81.7	91.6	78.5
Registered	4.2	2.1	4.8
Neither	13.4	5.5	15.9

Bank Account

Residence	Yes	No
Union	13.0	86.5
Urban	25.2	74.1
Rural	7.6	92.0
Kachin	11.6	87.7
Kayah	12.9	86.2
Kayin	5.8	94.0
Chin	10.4	87.8
Sagaing	7.1	92.6
Tanintharyi	10.8	88.7

Residence	Yes	No
Bago	12.6	87.2
Magway	10.7	89.0
Mandalay	13.2	86.3
Mon	10.5	89.2
Rakhine	8.7	91.1
Yangon	27.1	72.2
Shan	11.4	87.7
Ayeyawady	7.3	92.3
Nay Pyi Taw	12.2	87.6



Provisional Results

Education

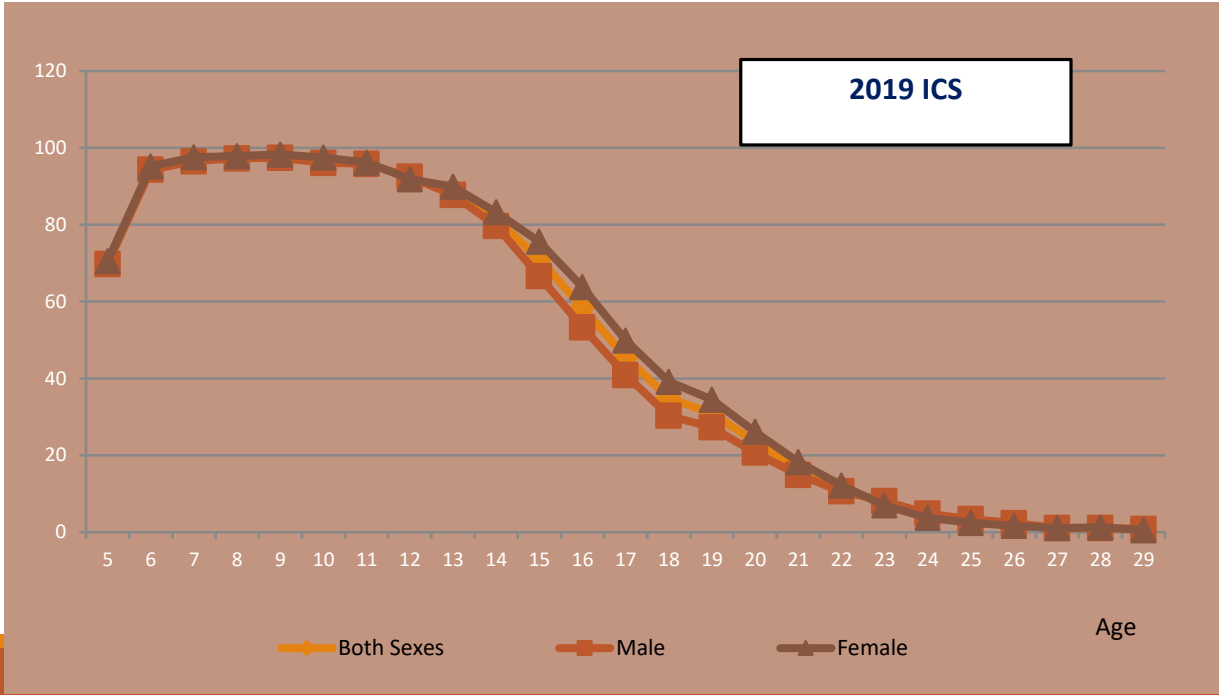
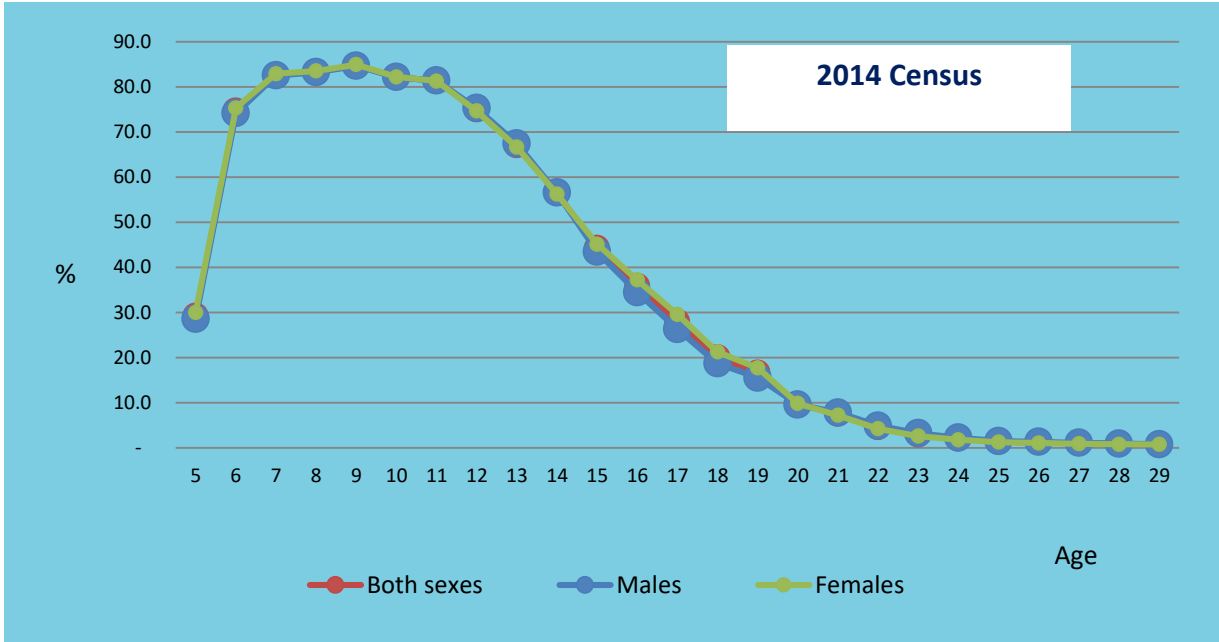


Literacy and Numeracy (15 years and over)

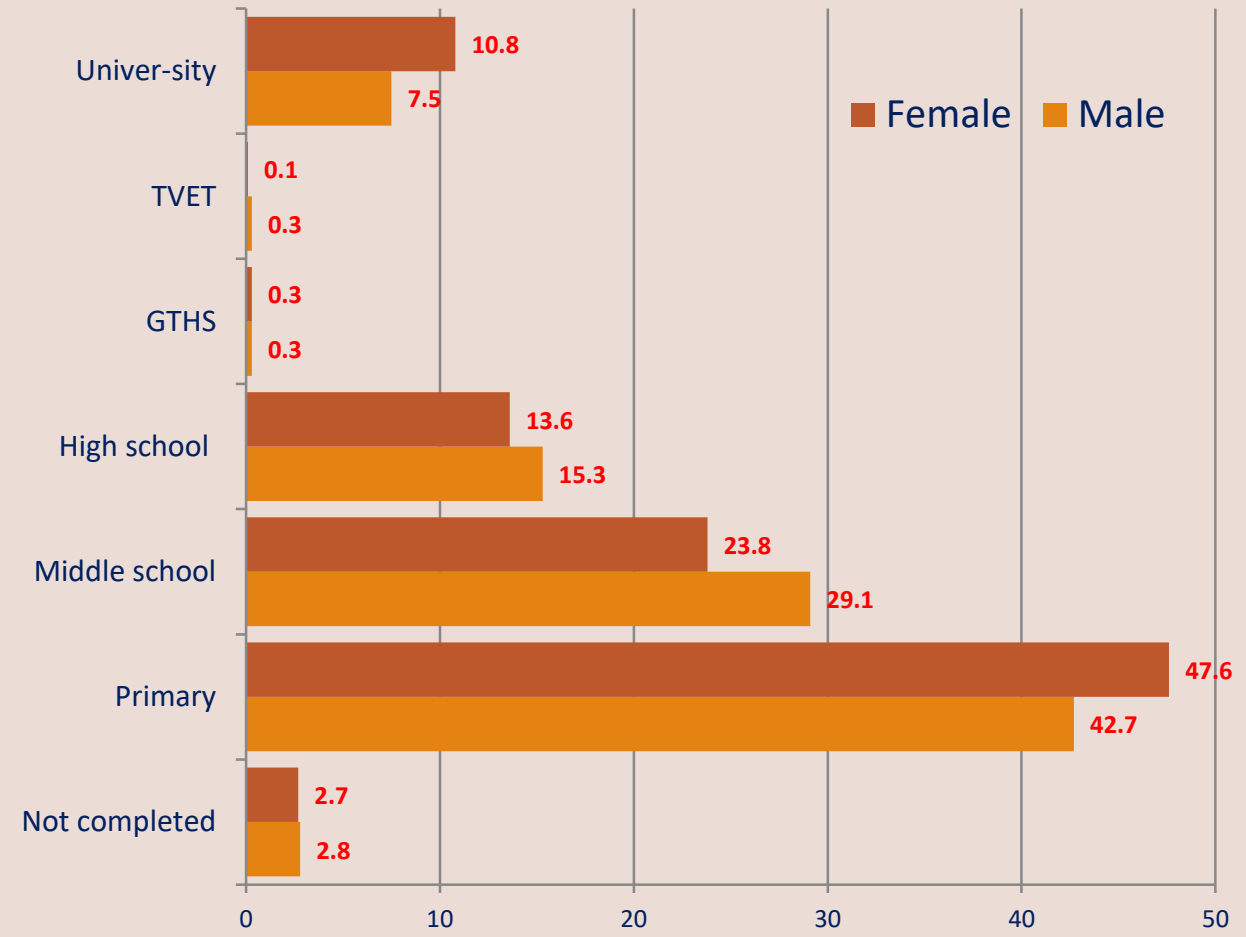
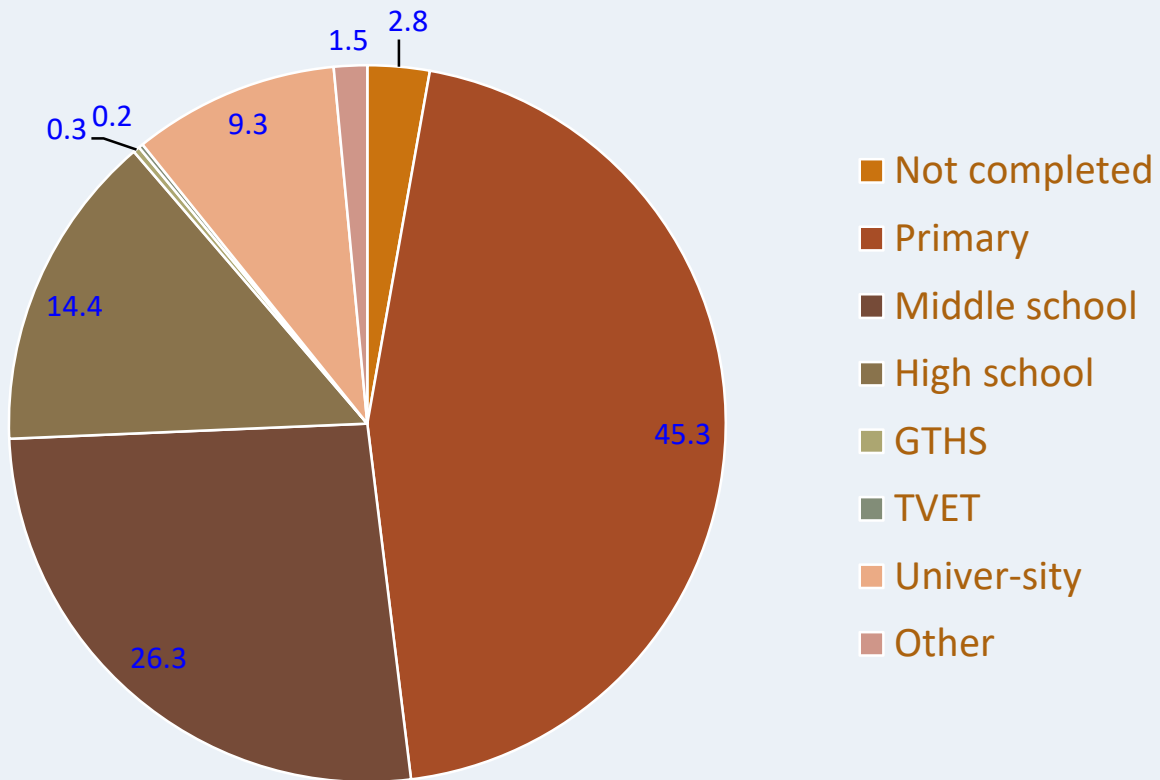
Census/ Survey	Literacy			Numeracy		
	Male	Female	Total	Male	Female	Total
1983 Census	82.0	71.3	76.6	-	-	-
2014 Census	92.6	86.9	89.5	-	-	-
2019 ICS	92.4	86.3	89.1	92.4	87.1	89.5

School Attendance

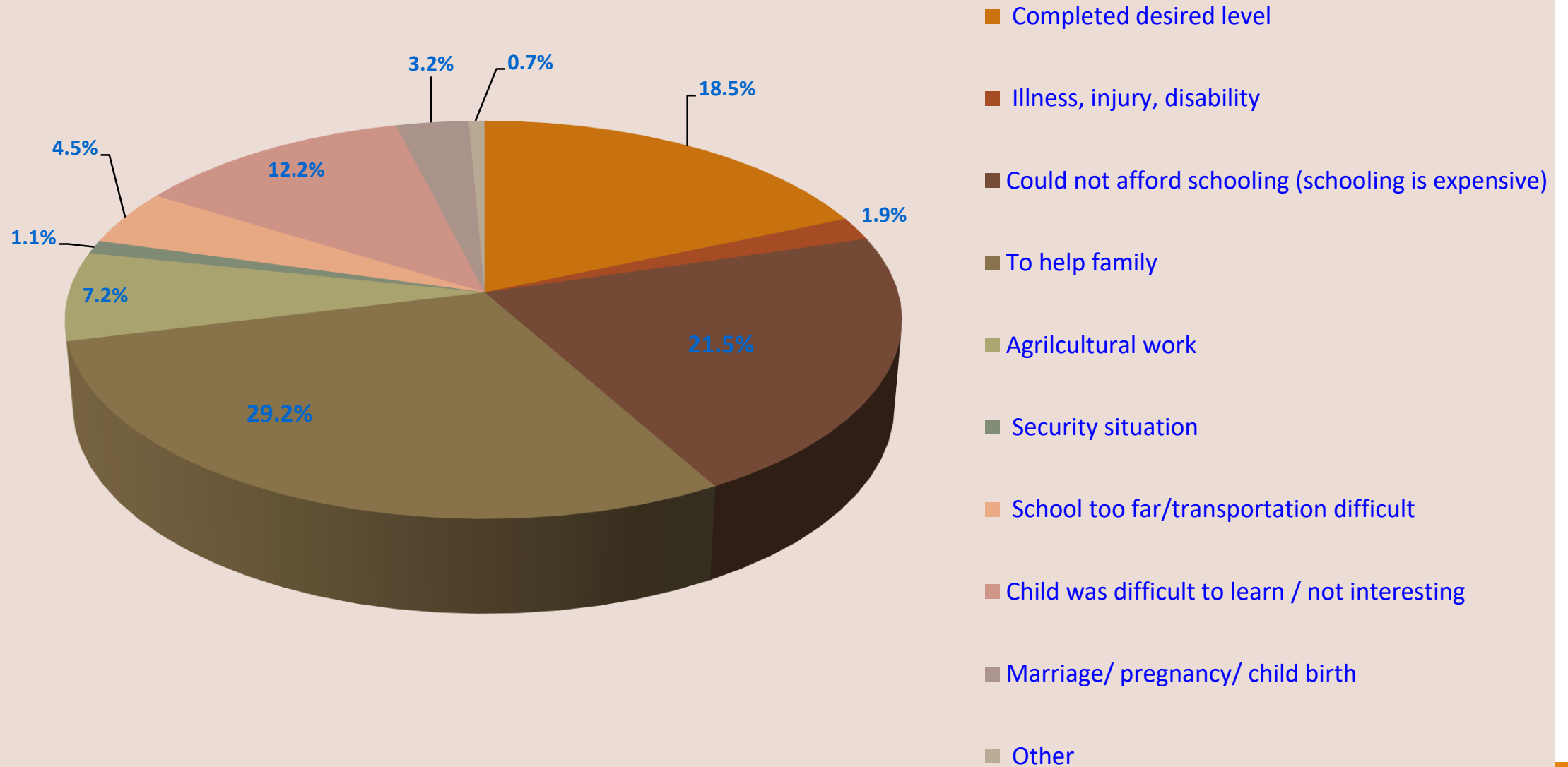
Age group	Never Attended (2019 ICS)		
	Both Sexes	Male	Female
3-8	34.7	35.4	34.1
6-9	2.5	2.9	2.2
10-13	1.5	1.7	1.3
14-15	2	2.2	1.7
15-24	3.2	3.4	3
25+	10.8	8.2	12.9
60+	20.9	13	26.3



Highest Grades (5 years and over)



Main reasons for stop schooling





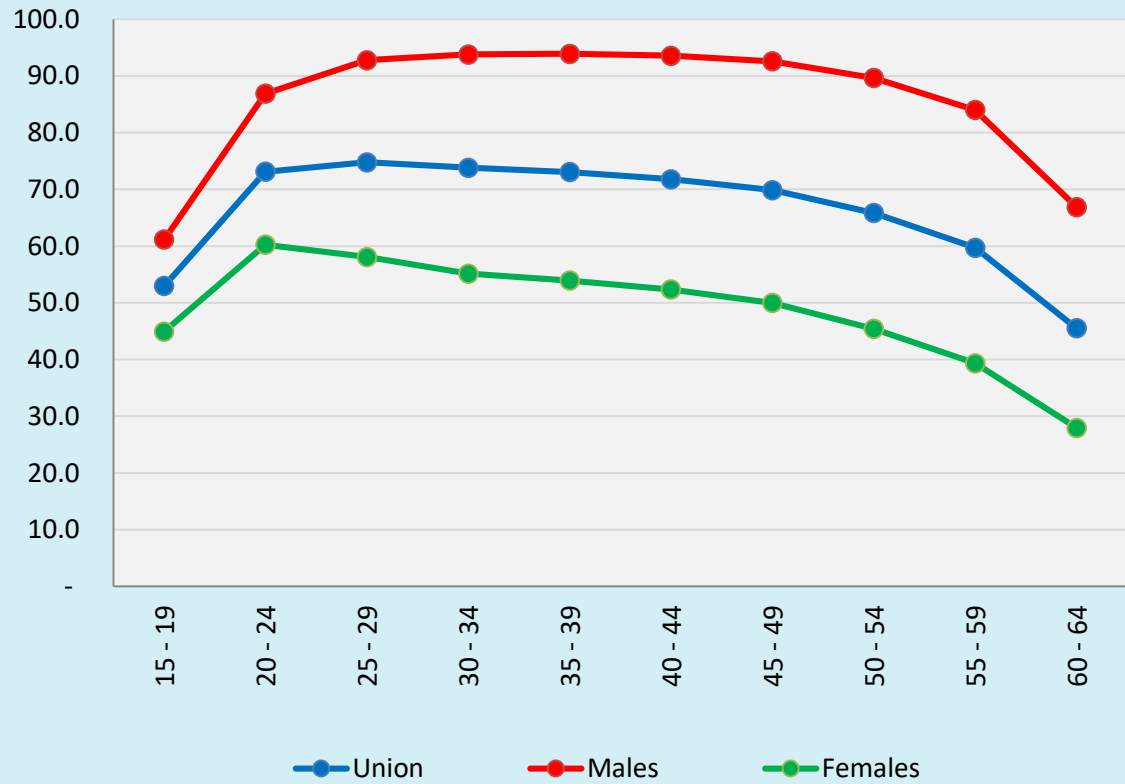
Provisional Results

Labour Force

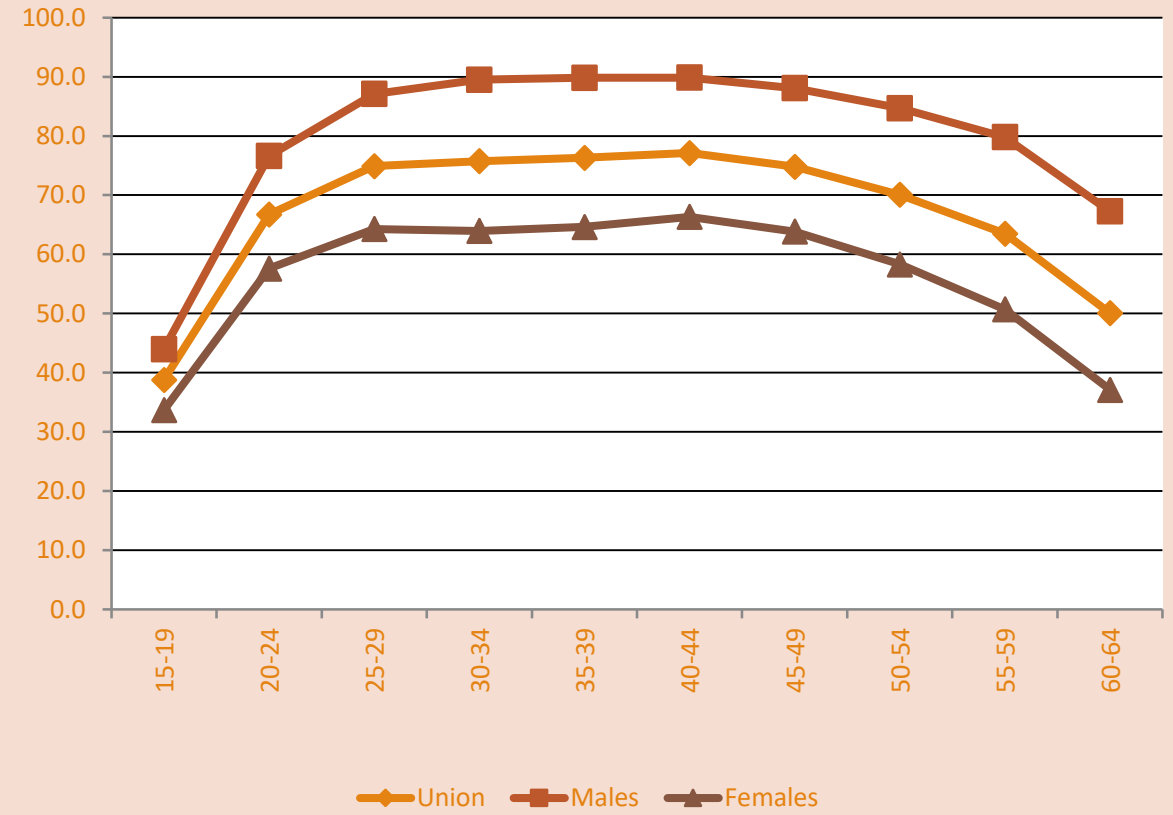


Labour Force participation rate

2014 Census

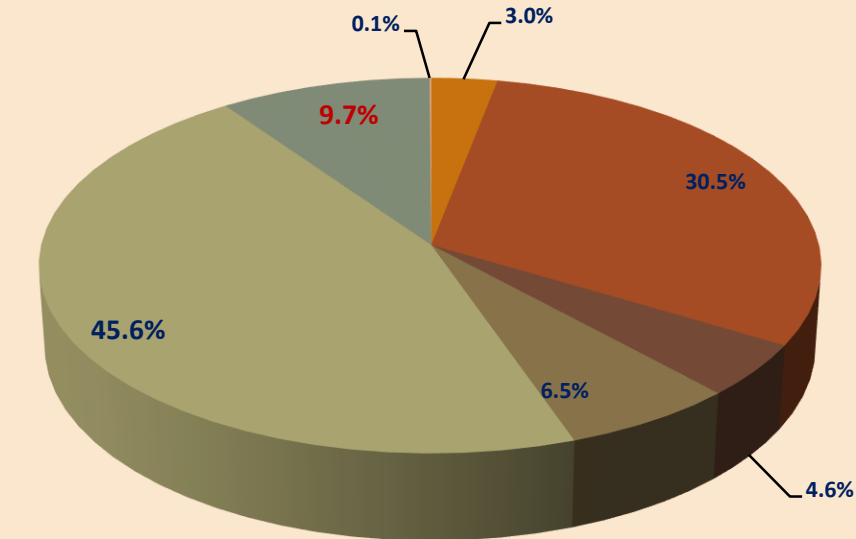


2019 ICS



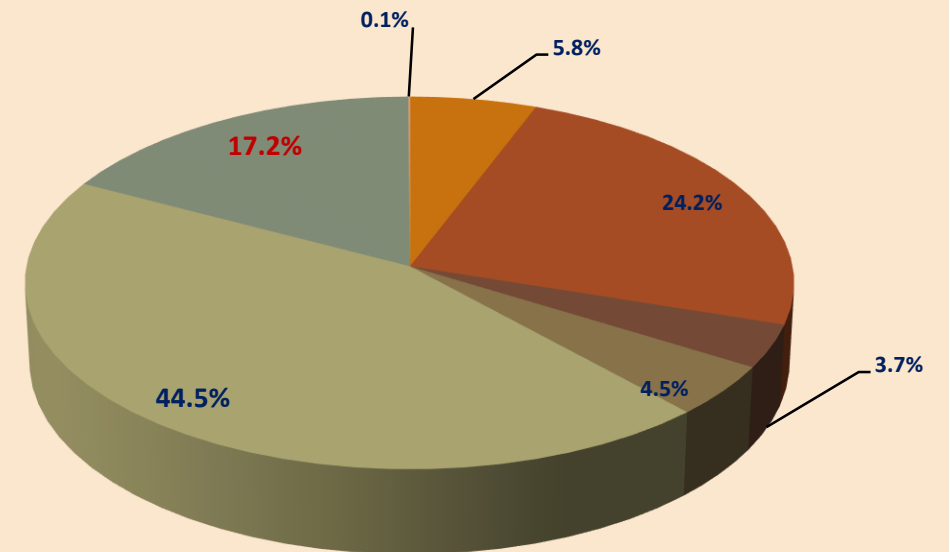
Current Activity Status

Male



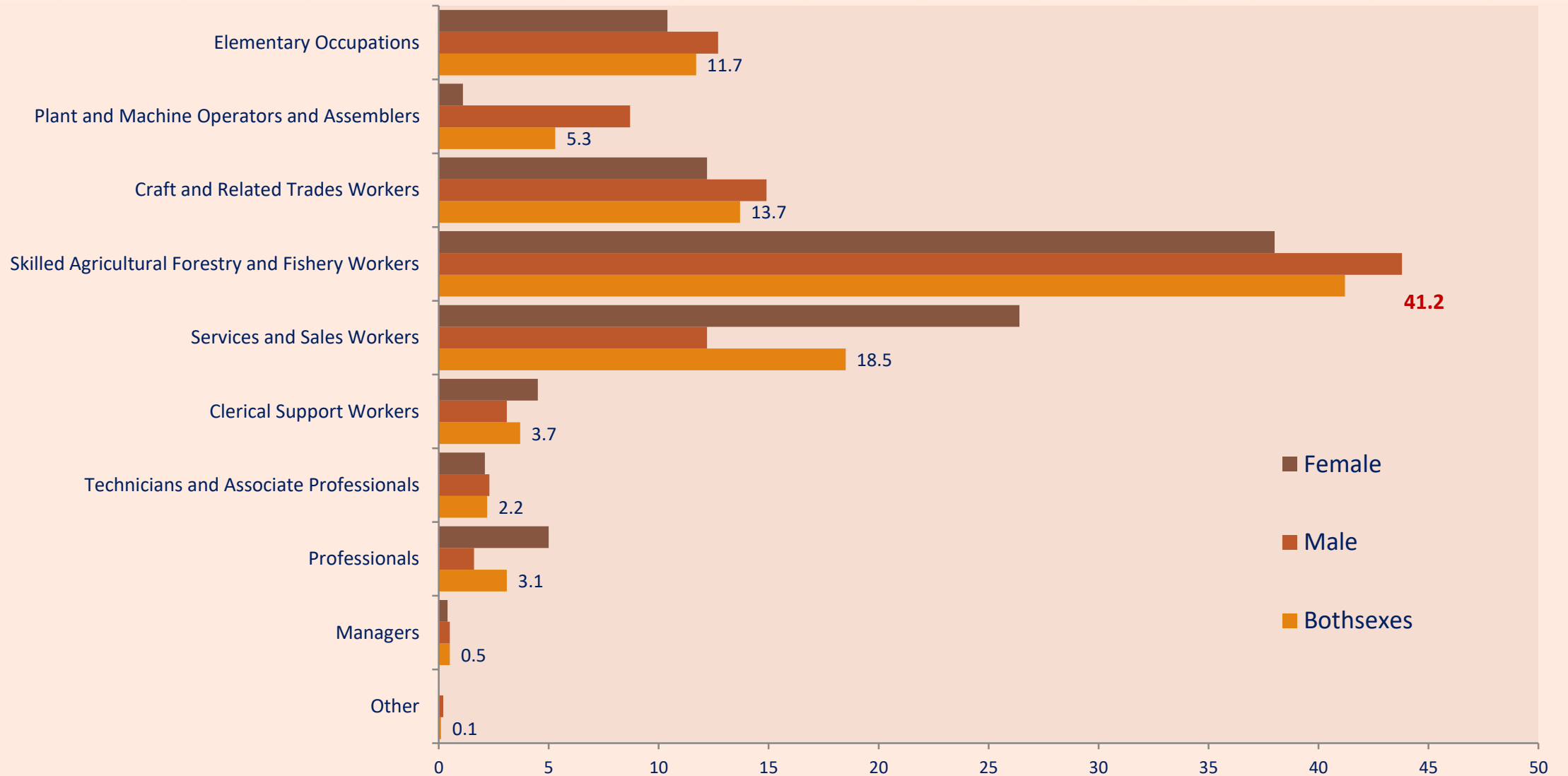
- Employee (Government)
- Employee (Private)
- Paid apprentice/ intern
- Worked as an employer (with regular employees)
- Own account worker (without regular employees)
- Helping without pay in a household/ family business
- Other specify

Female

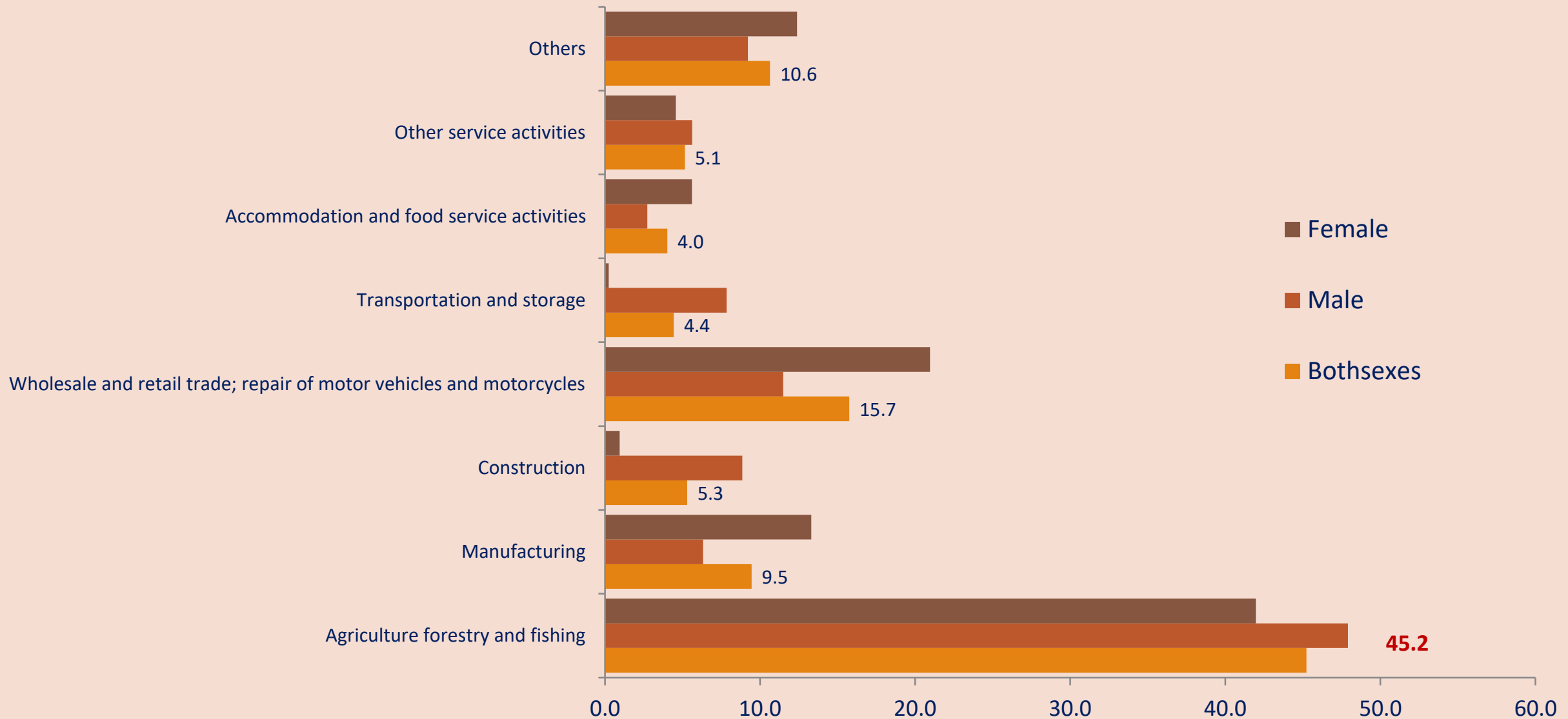


- Employee (Government)
- Employee (Private)
- Paid apprentice/ intern
- Worked as an employer (with regular employees)
- Own account worker (without regular employees)
- Helping without pay in a household/ family business
- Other specify

Occupation (10 years and over)



Industry (10 years and over)



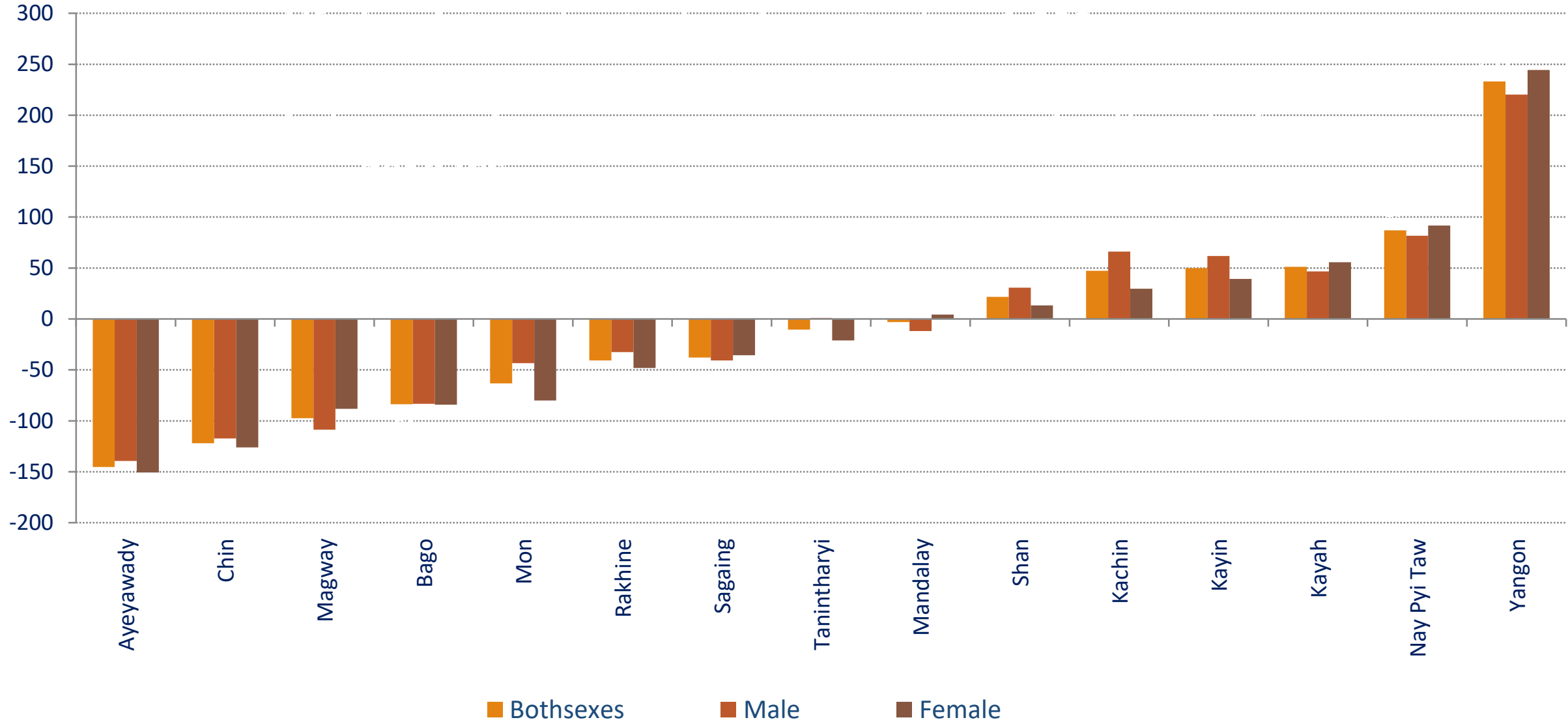


4

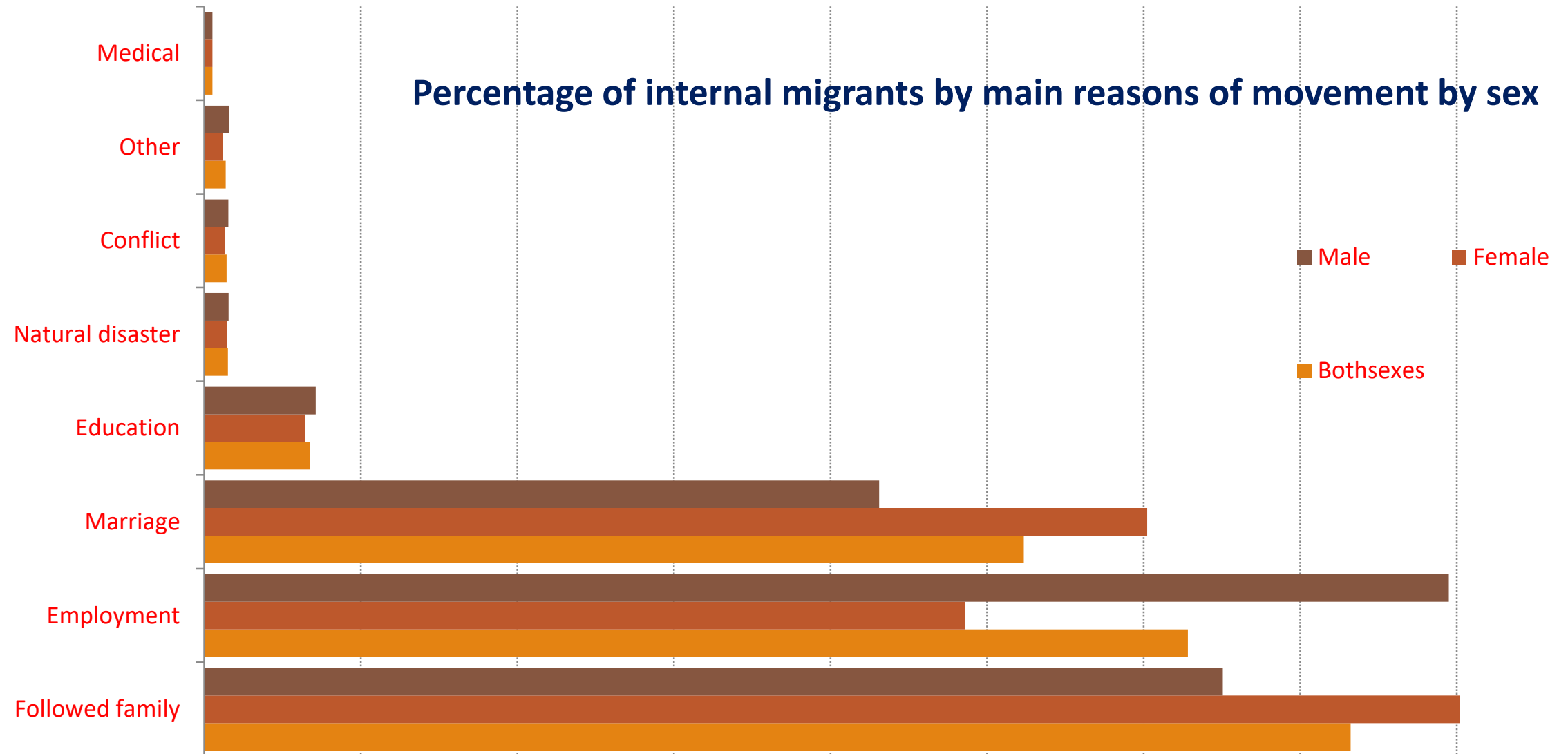
Provisional Results

Migration

Lifetime internal net migration



Reasons of movement



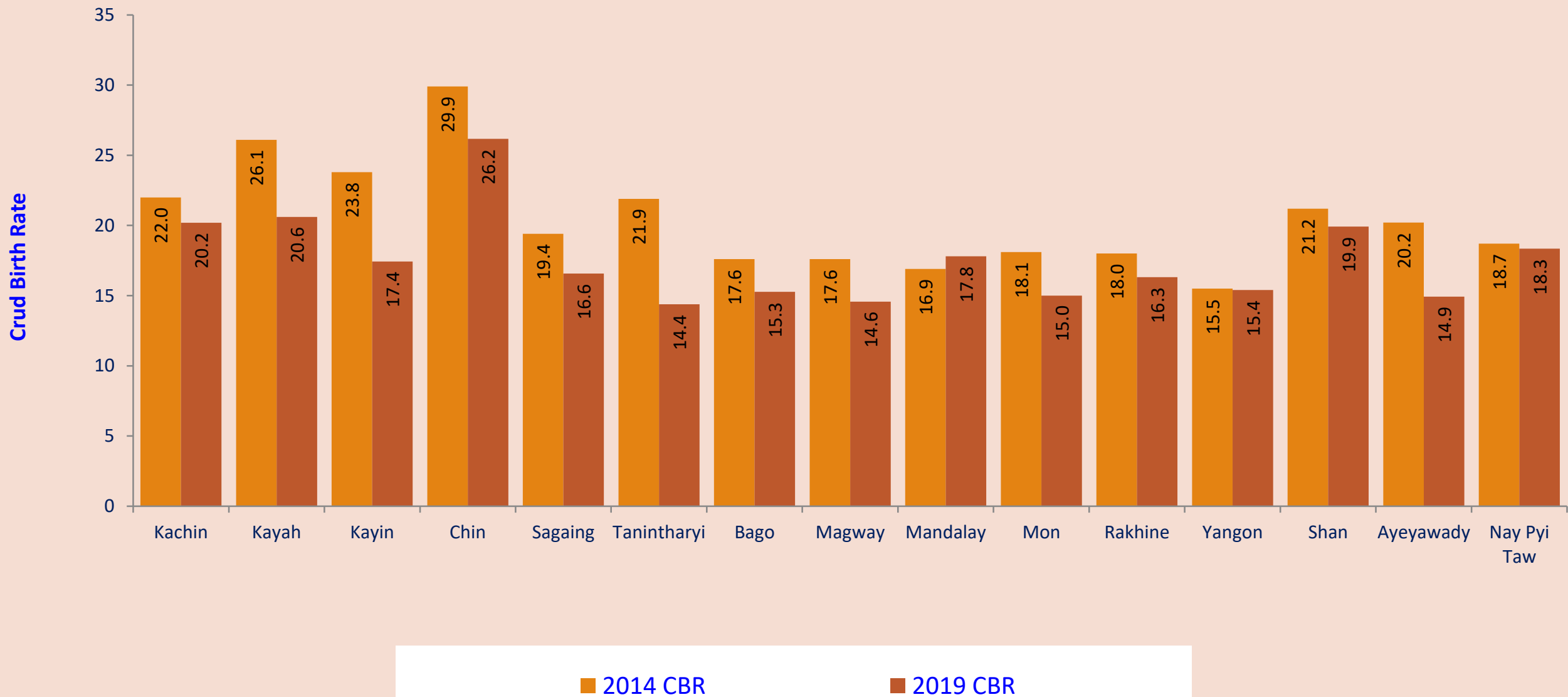


Provisional Results

Fertility and Mortality

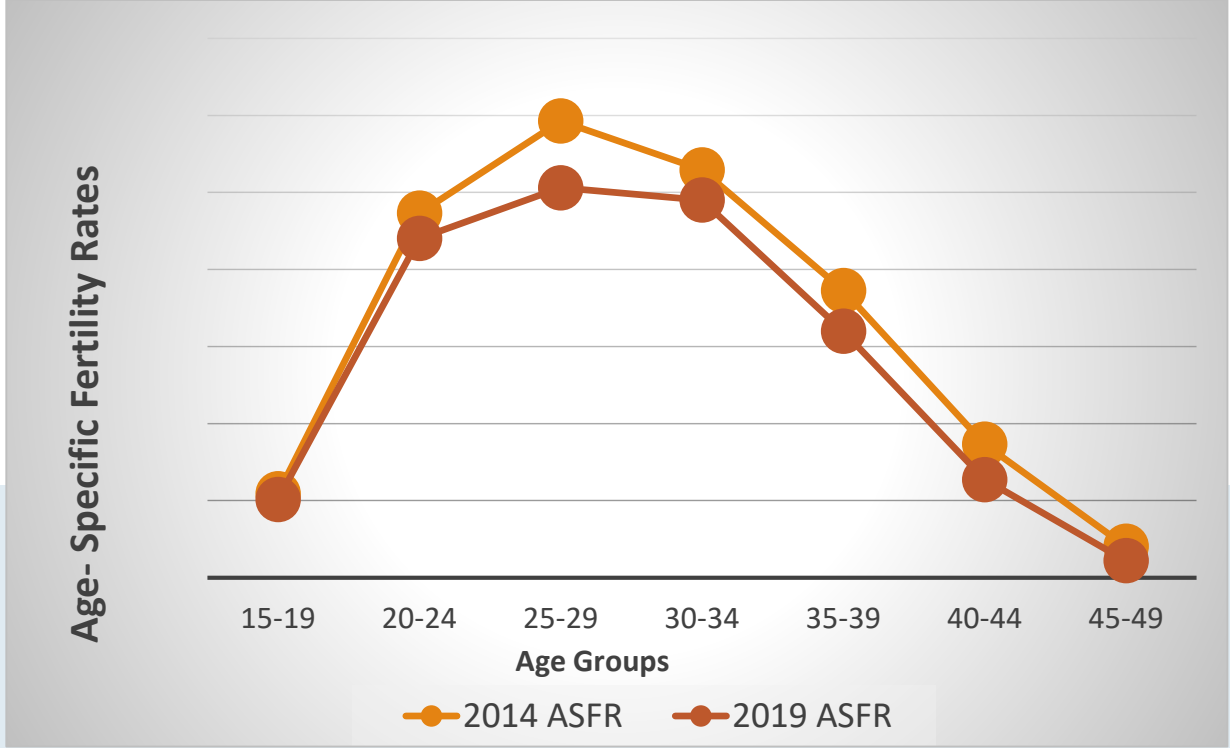
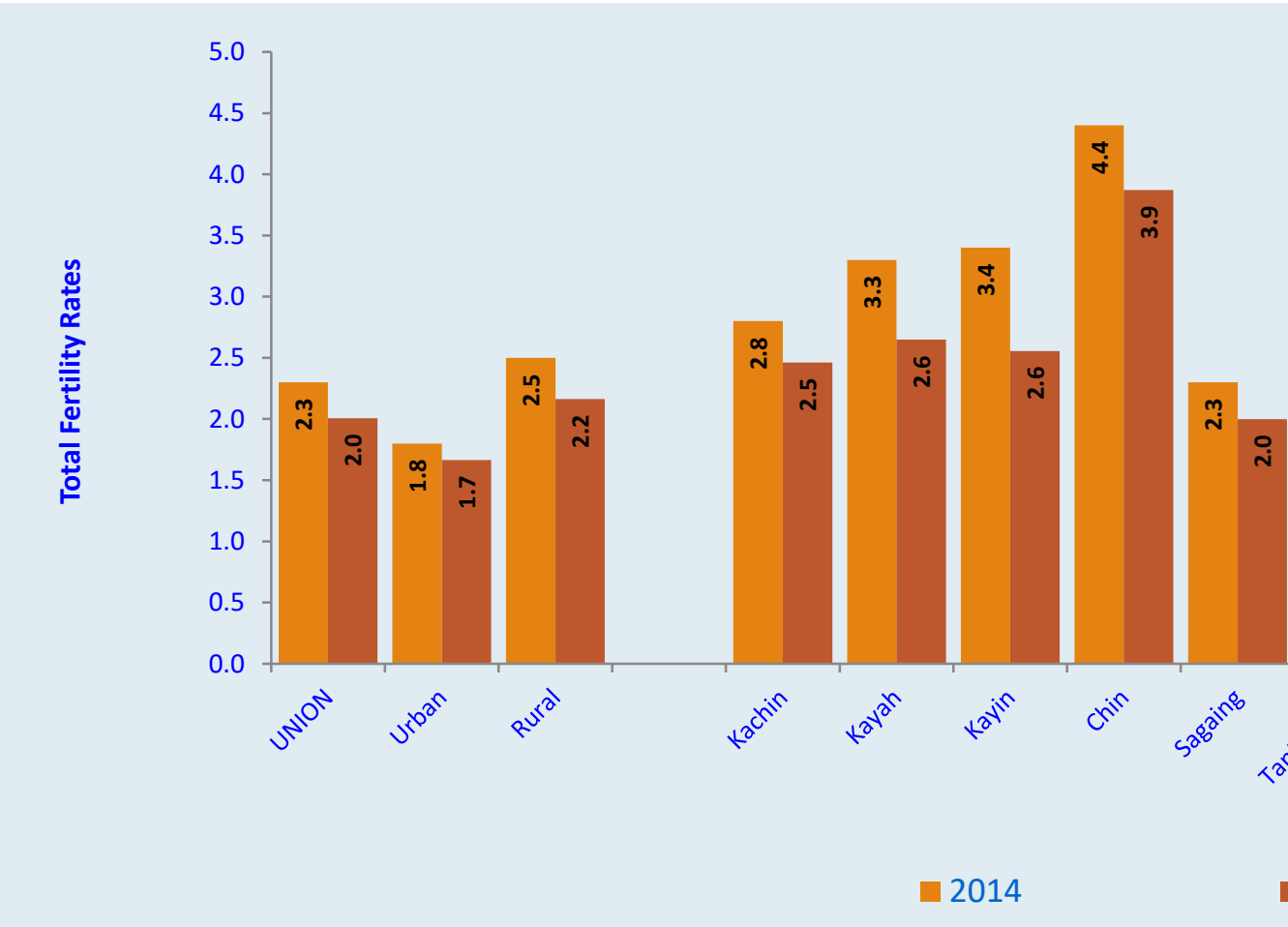


Crude Birth Rate (CBR)

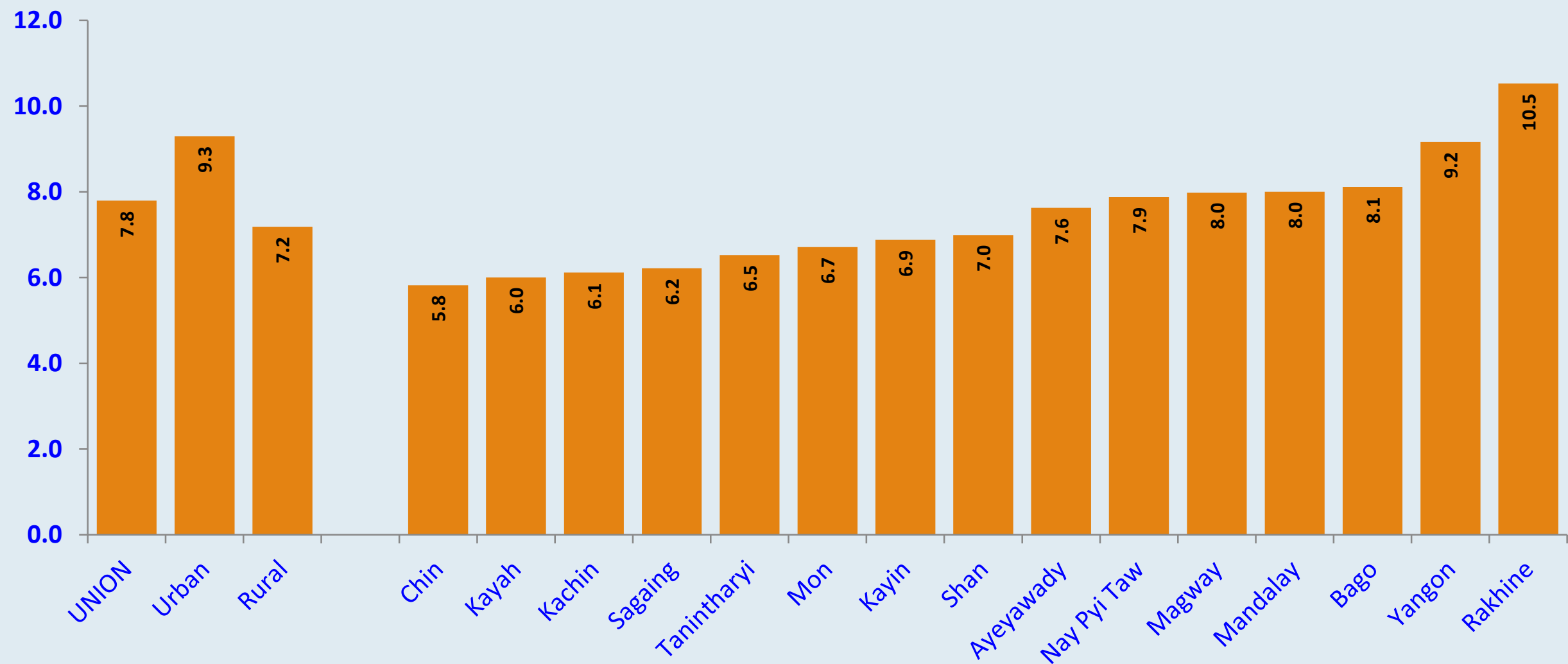


Age Specific Fertility Rate (ASFR)

Total Fertility Rate (TFR)



Crude Death Rate (CDR)



Early Age Mortality and Life Expectancy

	Infant Mortality Rate		Child Mortality Rate		Under Five Mortality Rage		Life Expectancy at birth	
	2014 Census	2019 ICS	2014 Census	2019 ICS	2014 Census	2019 ICS	2014 Census	2019 ICS
Union	61.8	30.9	10.0	7.0	71.8	37.7	64.7	69.4
Urban	41.0	22.3	5.3	4.1	46.3	26.3	65.2	71.9
Rural	67.2	34.1	11.6	8.2	78.8	42.1	64.7	68.5
Male	69.9	39.4	11.4	9.1	81.3	48.2	60.2	66.5
Female	53.6	21.1	8.4	4.4	62.0	25.4	69.3	73.3



Provisional Results

Disability

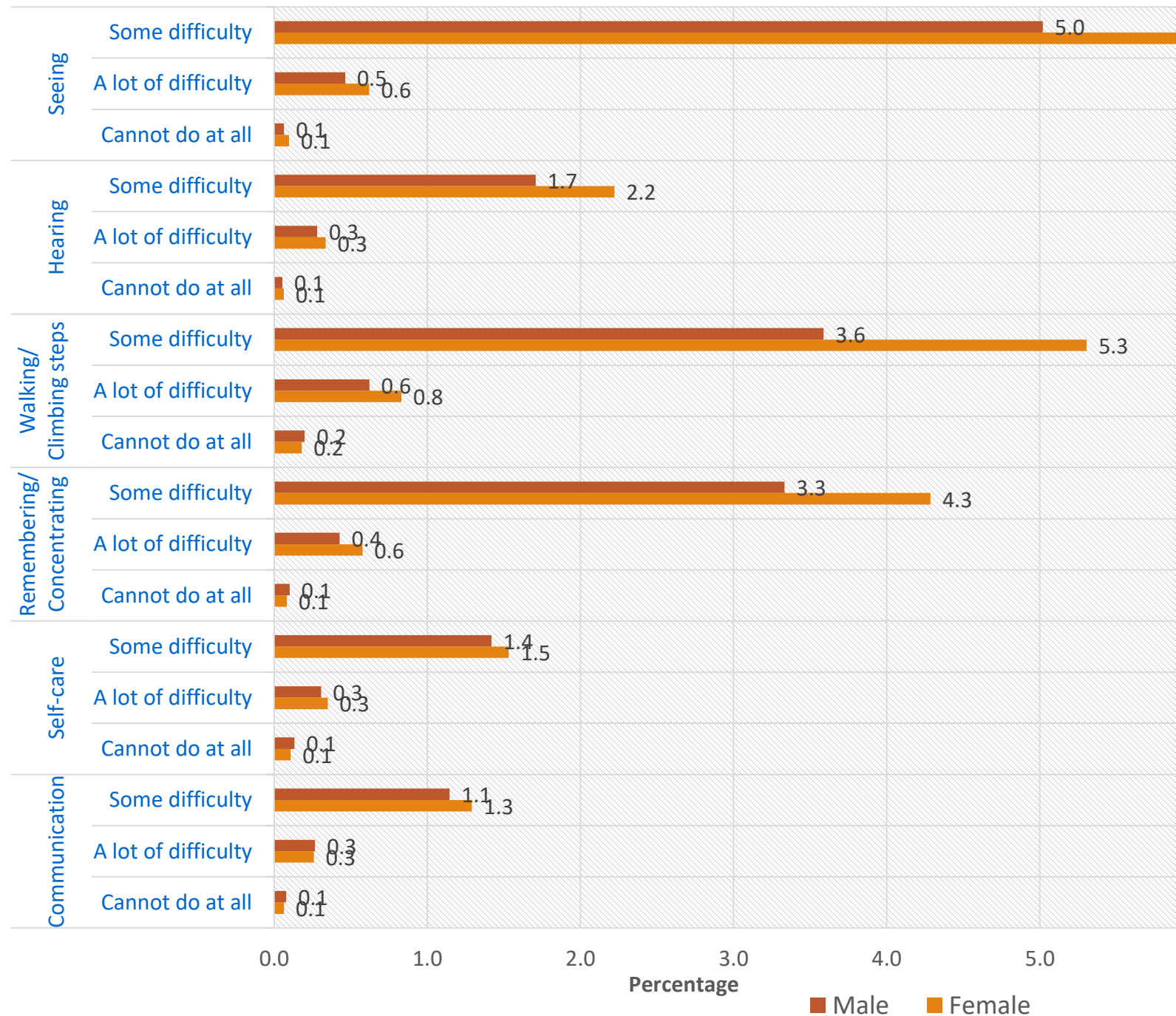


Disability Rate

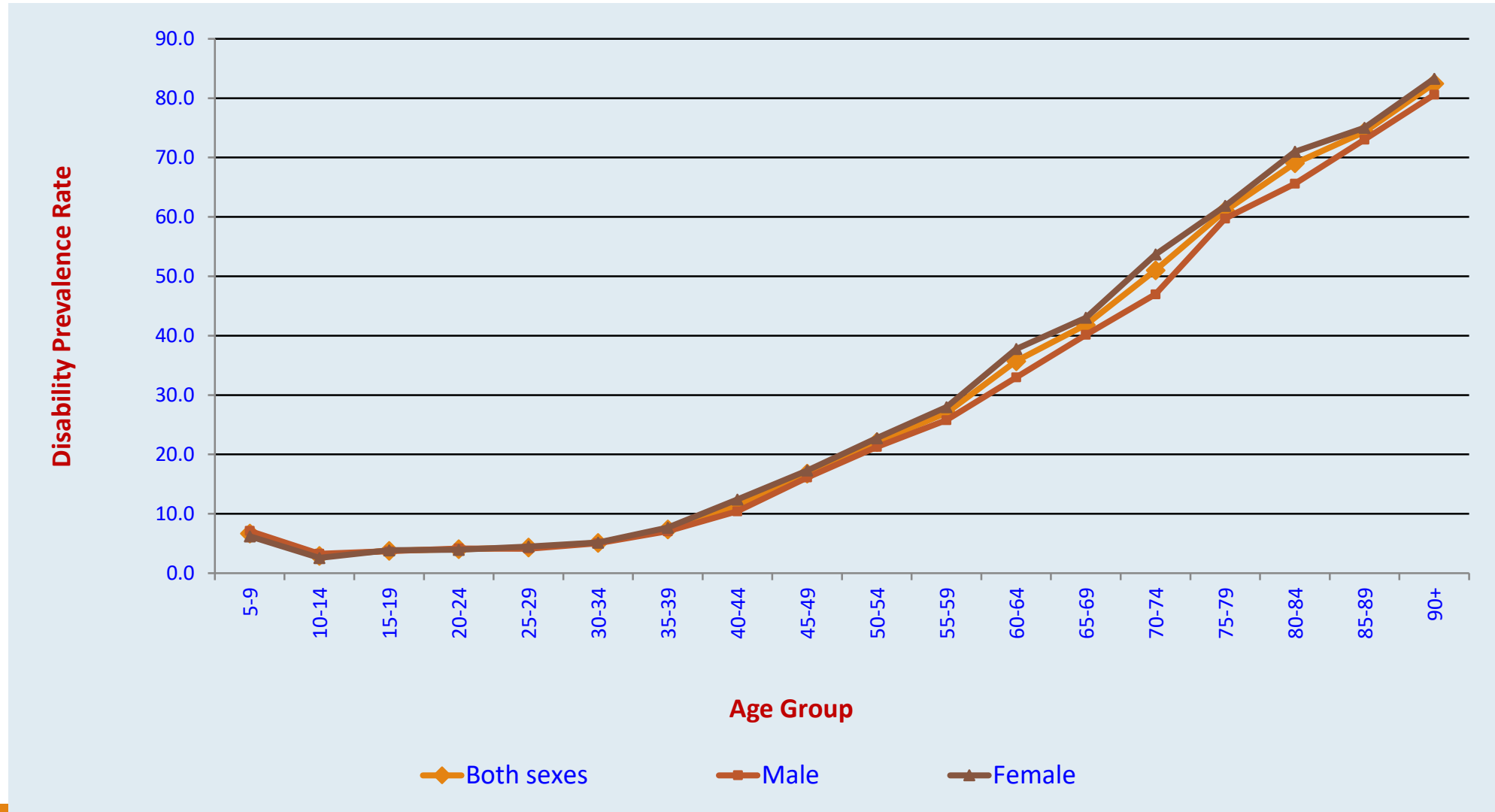
Type of Disability	Union	Urban	Rural	Male	Female
Disability prevalence rate (%)	12.8	12.3	13.1	11.6	13.9
Seeing	6.3	6.4	6.2	5.5	6.9
Hearing	2.4	1.9	2.5	2	2.6
Walking/ Climbing steps	5.4	5.4	5.4	4.4	6.3
Remembering/Concentrating	4.4	3.4	4.9	3.9	4.9
Self-care	1.9	1.6	2.1	1.9	2
Communication	1.6	1.3	1.7	1.5	1.6

Disability Rate

- Seeing = 6.3%
- Walking/climbing = 5.4%
- Remembering/
concentrating = 4.4%
- Hearing = 2.4%
- Self-care = 1.9%
- Communication = 1.6%



Disability Rate





Provisional Results

Older Population



Older Population

Indicator of ageing	1983 Census*	2014 Census*	2019 ICS**
0-14	38.6	28.6	27.2
15-59	55.1	62.5	62.8
60 and over	6.4	8.9	10.1
Median age	20.2	27.1	28
Ageing index	16.5	31.1	37.2
Potential support ratio	8.7	7.0	6.2
Parent support ratio	1.7	3.7	3.4

Note: * Enumerated population, ** Population in conventional households only

Type of Pension, allowance and benefit

Type of pension, allowance/benefits	Both Sexes	Male	Female
With any type of pension, allowance/benefits	14.2	16.0	13.0
A - Work pension	6.5	8.8	4.9
B - Veteran's pension, war widow's pension	2.1	2.8	1.7
C - Family pension	2.4	1.2	3.2
D - Social pension	1.6	1.6	1.6
E - Invalid or Disability allowance pension	0.4	0.4	0.4
F - Sickness allowance	0.9	0.7	1.0
G – Other	1.1	1.0	1.1
H - Don't know	0.1	0.1	0.1



Provisional Results

Housing



Type of Housing

Type of housing unit	2014 Census			2019 ICS		
	Union	Urban	Rural	Union	Urban	Rural
Condominium/Apartment/ flat	4.5	12.4	1.4	5.7	16.8	1.4
Bungalow/ brick house	6.8	13.3	4.2	10.5	16.4	8.3
Semi-pucca house	6.5	11.0	4.8	13.1	17.8	11.3
Wooden House	41.2	37.4	42.7	40.0	32.8	42.8
Bamboo House	37.4	23.6	42.7	26.6	13.8	31.5
Hut (2-3 years)	1.9	0.8	2.3	3.0	1.2	3.7
Hut (1 year)	0.9	0.5	1.0	0.6	0.4	0.7

Number of Rooms

Number of rooms (s)	Union	Urban	Rural
1	16.5	20.4	15.0
2	33.9	30.4	35.3
3	28.8	25.1	30.3
4	13.1	13.2	13.0
5	4.9	6.5	4.3
6	1.8	2.5	1.5
7	0.4	0.9	0.2
8 +	0.6	1.0	0.4

Energy sources for Lighting

Source of Lighting	2014 Census			2019 ICS		
	Union	Urban	Rural	Union	Urban	Rural
Grid electricity (government grid/ border country grid/ community based grid)	32.4	77.5	14.9	53.0	90.9	38.4
Generator (Private)	9.3	5.8	10.7	3.5	2.1	4.0
Solar system energy	8.7	1.4	11.5	29.1	2.7	39.3
Wind and water mill	1.6	0.8	1.9	0.8	0.6	0.9
Kerosene	8.1	0.5	11.0	0.5	0.1	0.6
Candle	20.7	7.2	26.0	4.3	1.6	5.3
Rechargeable battery	17.0	6.3	21.1	8.7	2.0	11.3

Energy sources for Cooking

Type of cooking fuel	2014 Census			2019 ICS		
	Union	Urban	Rural	Union	Urban	Rural
Grid electricity (Government grid/ border country grid/ community based grid)	16.4	44	5.6	37.7	72.5	24.1
Kerosene	0.2	0	0.3	0	0	0
LPG	0.8	2.2	0.2	0.5	1.4	0.2
Bio Gas				1.1	2.2	0.6
Firewood	69.2	25.6	86.2	53.3	12.5	69.1
Charcoal	11.8	26.5	6.1	6.4	10.3	4.9

Availability of communication and related amenities

Availability of communication and related amenities	2014 Census			2019 ICS		
	Union	Urban	Rural	Union	Urban	Rural
Radio	35.5	27.2	38.8	19.1	13.9	21.2
Television Set	49.5	75.8	39.2	59.3	83.3	50.0
Landline/fixed-line telephone	4.8	9.4	3.1	4.3	6.9	3.3
Mobile phone	32.9	63.5	21.0	85.8	94.9	82.2
Computer	3.5	10.2	0.8	5.4	15.1	1.7
Internet access at home (through landline or mobile connection)	6.2	17.0	2.0	56.0	74.7	48.8
% with none of the items	30.3	14.8	36.4	9.4	2.6	12.0

Availability of transportation items

Availability of transportation items	2014 Census			2019 ICS		
	Union	Urban	Rural	Union	Urban	Rural
Car/Pickup/ Truck/ Van	3.1	8.1	1.2	7.8	16.6	4.5
Motorcycle/ moped/ tuk tuk	38.7	41.2	37.7	59.4	58	60
Bicycle	35.9	46.9	31.7	36.7	43.5	34.1
Four-wheel tractor	2.5	1.4	2.9	3.3	1.5	4
Canoe/ boat	3.9	0.6	5.1	3.5	0.5	4.7
motored boat	2.2	0.5	2.8	3.1	0.6	4.1
Cart (bullock/ horse)	21.6	2.5	29.1	16.2	1.6	21.9



Provisional Results

WASH



Drinking Water

	2014 Census	2019 ICS
Pipe	9.0	16.9
Borehole or tube well	31.4	27.3
Protected well/spring	18.9	14.1
Rain water	3.1	2.0
Package water (bottled water)	10.2	21.7
Improved drinking water	72.6	82.0
Unprotected well/spring	5.3	3.2
Delivered water		2.0
Surface water (river, stream, dam, lake, pond, canal...)	19.8	12.5
Others	2.3	0.3
Unimproved drinking water	27.4	18.0

Toilet Facility

	2014 Census	2019 ICS
Flush / pour flush	74.3	85.3
Pit latrine	7.8	6.1
Flush to open drain		0.9
Flush to don't know where		0.1
Pit latrine without slab / Open pit	2.7	1.6
Container based sanitation		0.1
Hanging toilet / hanging latrine		0.8
No facility / Bush / Field	14.4	4.9
Others	0.8	0.2

What will be the next?

- ◆ Main Report Launch
- ◆ Dissemination Workshops for Main Report
- ◆ Thematic Reports
- ◆ Consultation Meetings

Provisional Results Report of 2019 ICS









- ◆ Myanmar Version of Provisional Results Report (PDF) can be downloaded at...
- ◆ <http://www.dop.gov.mm/en/publication-category/provisional-result>

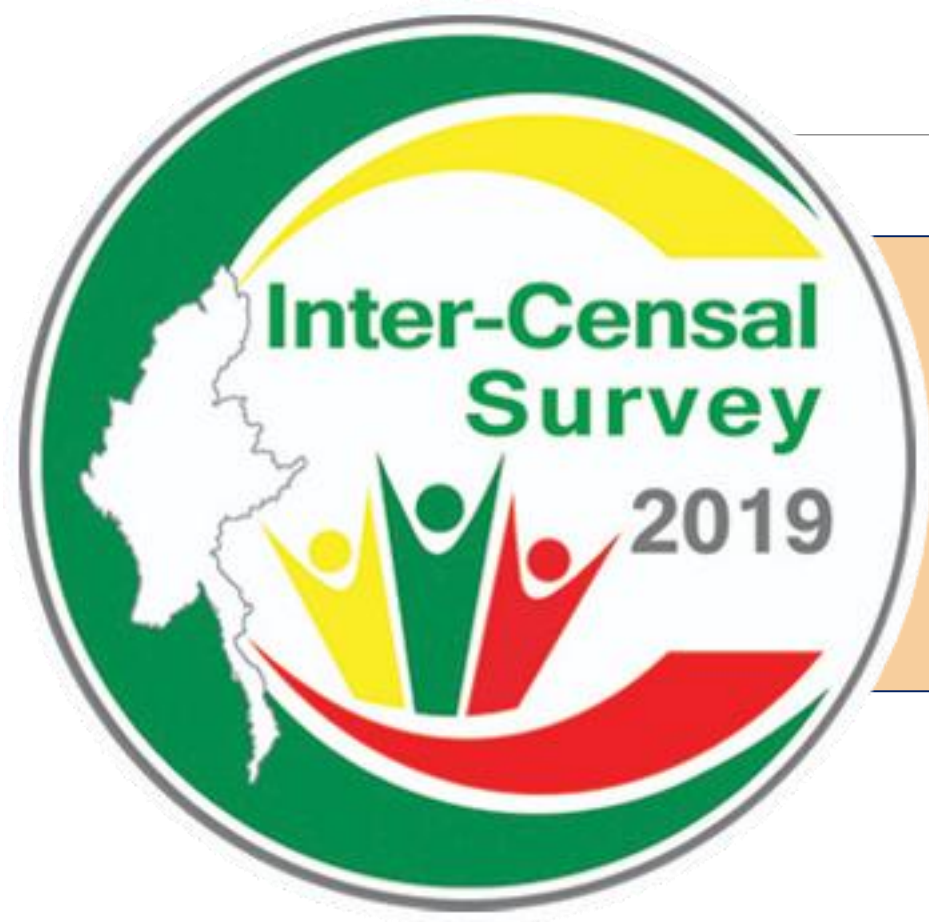


Tables are available in excel formats (Myanmar & English Version)

- ◆ Myanmar & English Version of Data files can be downloaded at...

- ◆ <http://www.dop.gov.mm/en/data-and-maps-category/provisional-result>

Title	Upload Date	Language	State/Region	File Type	File Size	
2019 INTER-CENSAL SURVEY -WASH	31 Aug 2020	English		xlsx	31.03 KB	
2019 INTER-CENSAL SURVEY -POPULATION	31 Aug 2020	English		xlsx	56.53 KB	
2019 INTER-CENSAL SURVEY -OLDER PERSONS	31 Aug 2020	English		xlsx	59.47 KB	
2019 INTER-CENSAL SURVEY -LABOUR FORCE	31 Aug 2020	English		xlsx	70.26 KB	
2019 INTER-CENSAL SURVEY -HOUSING	31 Aug 2020	English		xlsx	72.33 KB	
2019 INTER-CENSAL SURVEY -FERTILITY AND MORTALITY	31 Aug 2020	English		xlsx	63.74 KB	
2019 INTER-CENSAL SURVEY -EDUCATION	31 Aug 2020	English		xlsx	120.81 KB	
2019 INTER-CENSAL SURVEY -DISABILITY	31 Aug 2020	English		xlsx	37.37 KB	



Thank You!!!