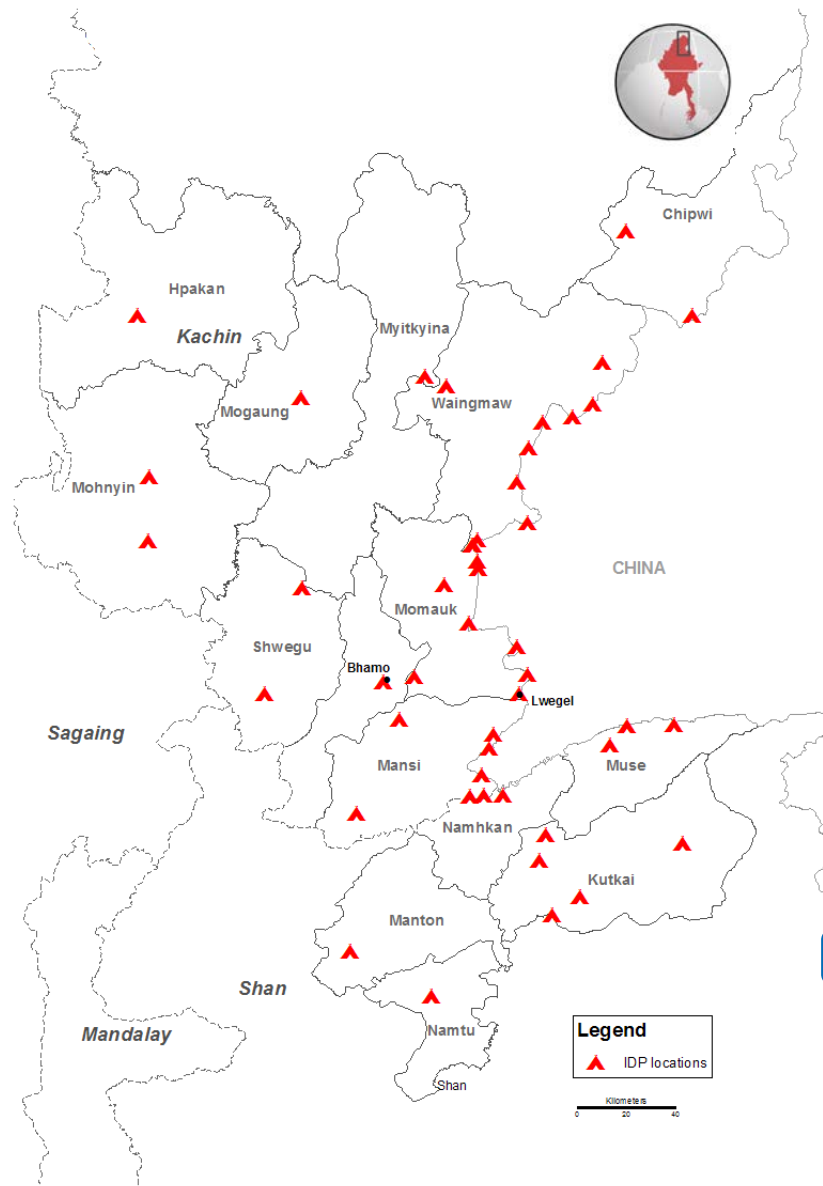


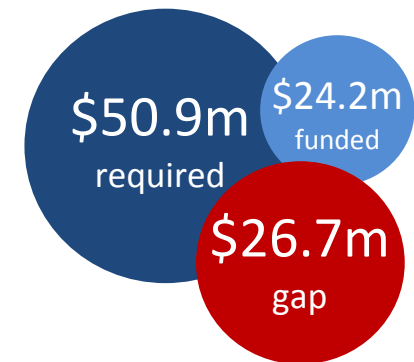
The conflict in Kachin and northern Shan States has displaced an estimated 100,000 people, who are in need of humanitarian assistance. As of 30 September, the number of registered internally displaced people (IDPs) staying in camps in Kachin and in northern Shan States was nearly 91,000, including over 52,000 in areas beyond the Government's control.

A total of 15 inter-agency cross-line missions have been conducted to non-government controlled areas since December 2011, covering only approximately 58 per cent of IDPs (more than 30,000 out of 52,000). Some inter-agency missions have been cancelled due to the security situation and poor road conditions. Full and sustained access to all displaced people, along with adequate funding, is essential to provide the necessary assistance to all people in need.



Access for the UN and international organisations to IDPs in areas beyond Government control remains limited. Local NGOs, who have been providing assistance for IDPs in these areas, require the support of international humanitarian partners to respond to the unmet needs of prolonged displacement.

## KACHIN RESPONSE PLAN FUNDING UPDATE Mar 2013 to Dec 2013

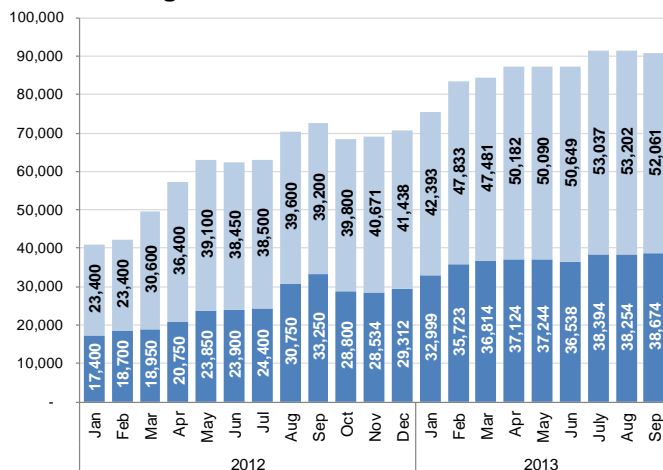


as of 30 September 2013



UN humanitarian assistance has regularly reached approximately **40,000** people in the Government controlled areas in two years while more than **30,000** people in the areas beyond Government control were intermittently reached through inter-agency missions.

IDP Figures 2012/2013



■ Areas where Government's services are available  
■ Areas where Government's services are not available

The boundaries and names shown and the designation used on this map do not imply official endorsement or acceptance by the United Nations.