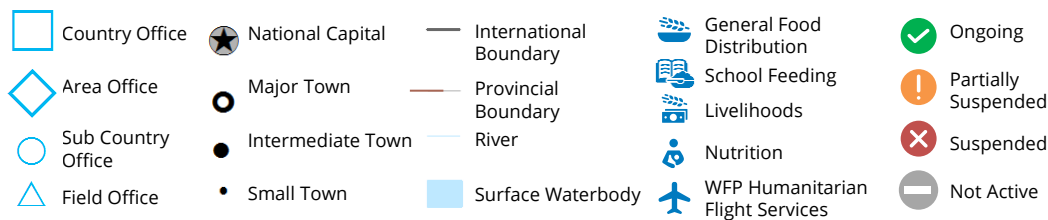
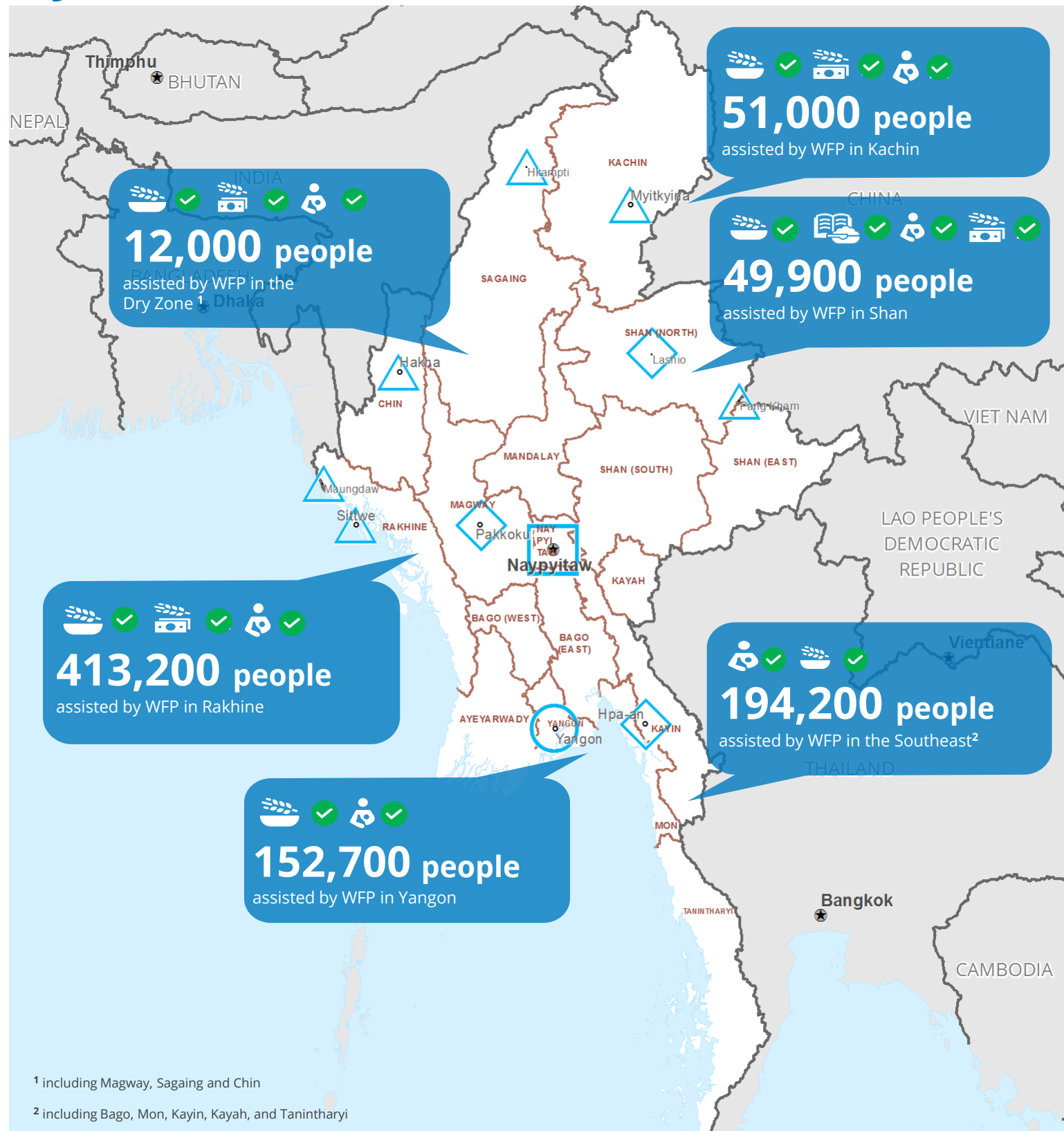


Myanmar



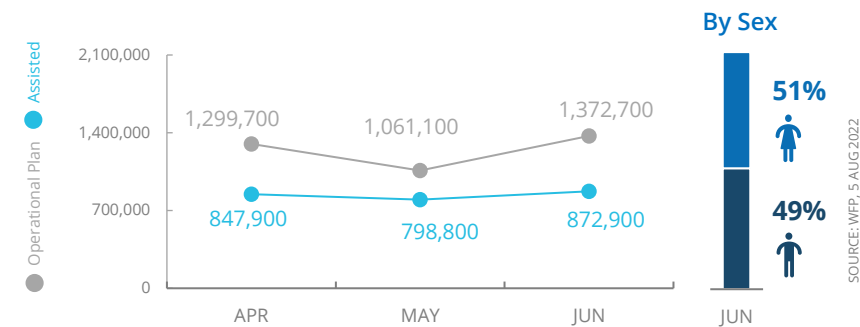
Data sources: WFP, UNGIWG, GAUL, OCHA.

The designations employed and the presentation of material in the map do not imply the expression of any opinion on the part of WFP concerning the legal or constitutional status of any country, territory, city or sea, or concerning the delimitation of its frontiers.

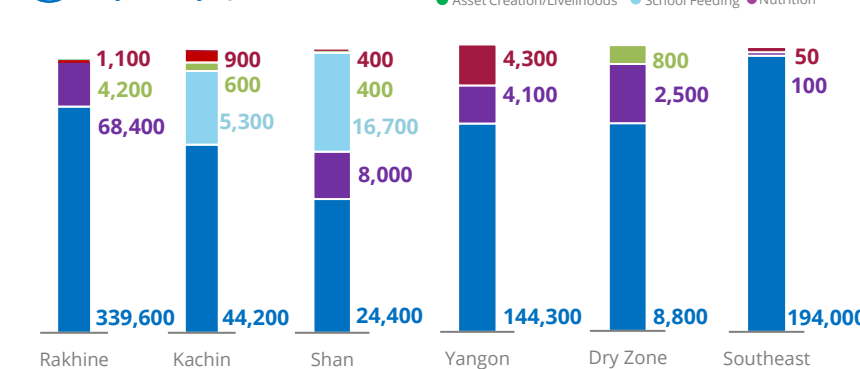
© World Food Programme 2022



PEOPLE ASSISTED Myanmar Country Strategic Plan



OPERATIONAL PROFILE By Activity – June 2022



FUNDING

Net funding requirements (6 months – US\$)
August 2022 – January 2023

Myanmar Country Strategic Plan (CSP)

us\$60m

Emergency Relief Assistance

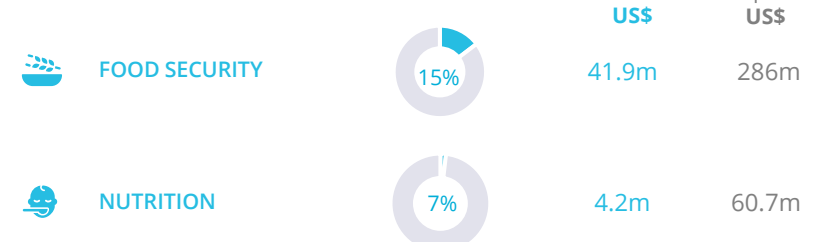
us\$41.5m

2022 Humanitarian Response Plan
January – December 2022

10%

Contributions: US\$ 86.8m
Requirements: US\$ 825.7m

WFP-LED AND SUPPORTED SECTORS



WFP Emergency Classification: Corporate Attention

For more information, see the latest [Country Brief](#)

[Myanmar Country Strategic Plan \(2018-2022\)](#)

