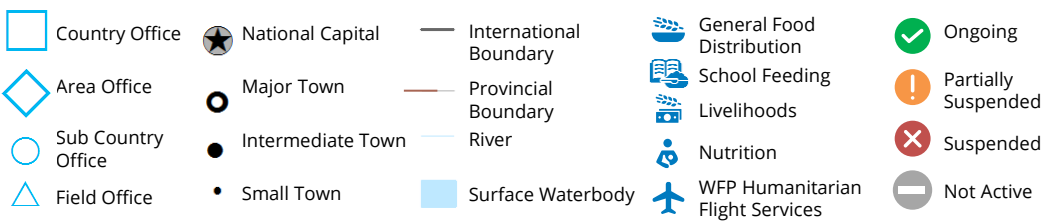
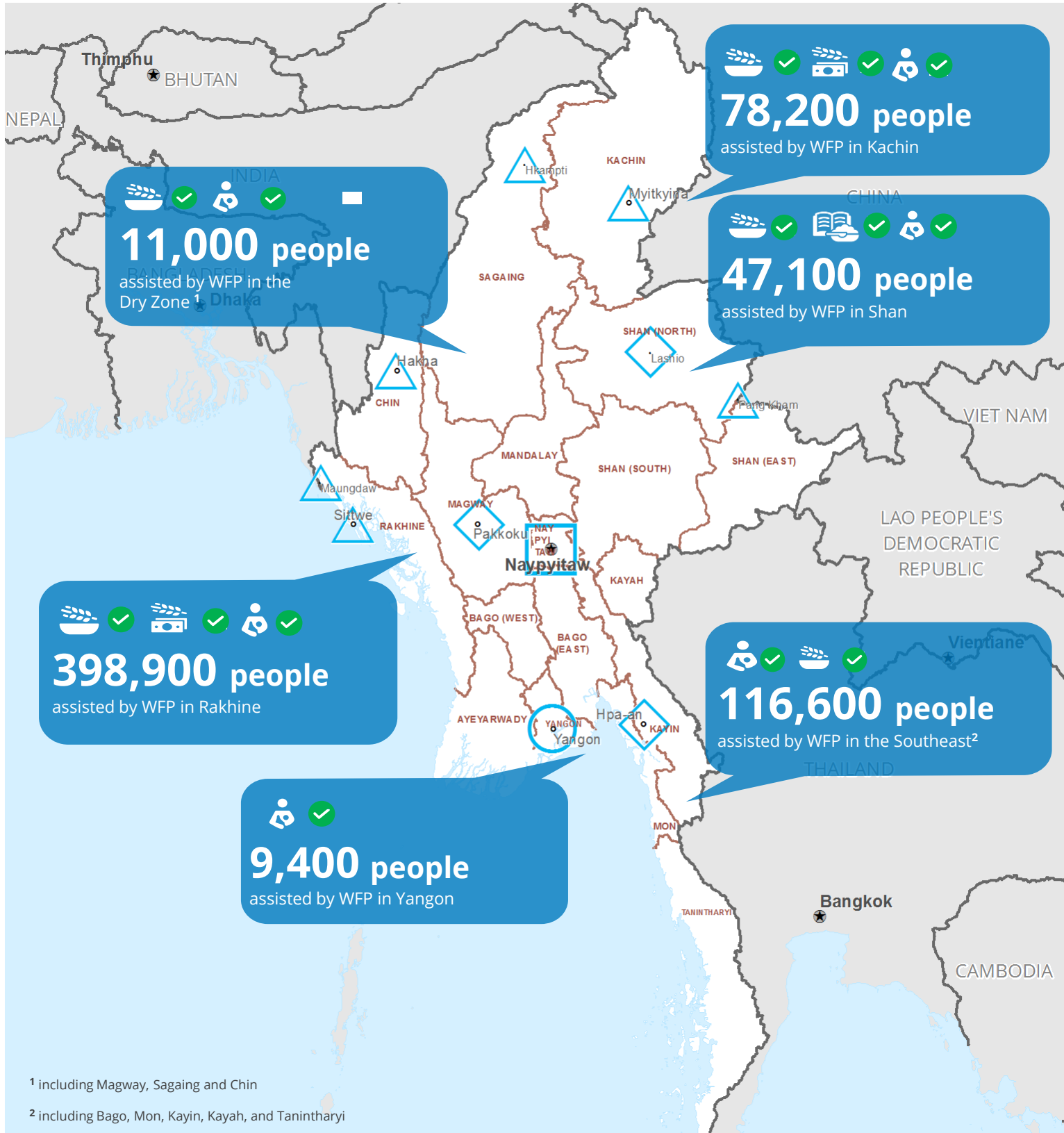


# Myanmar

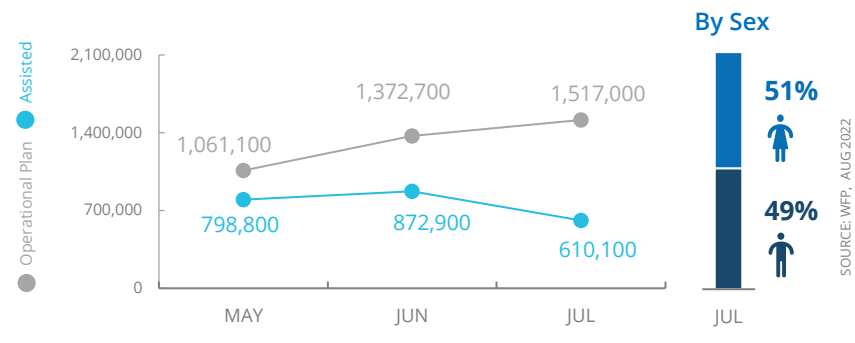


Data sources: WFP, UNGIWG, GAUL, OCHA.

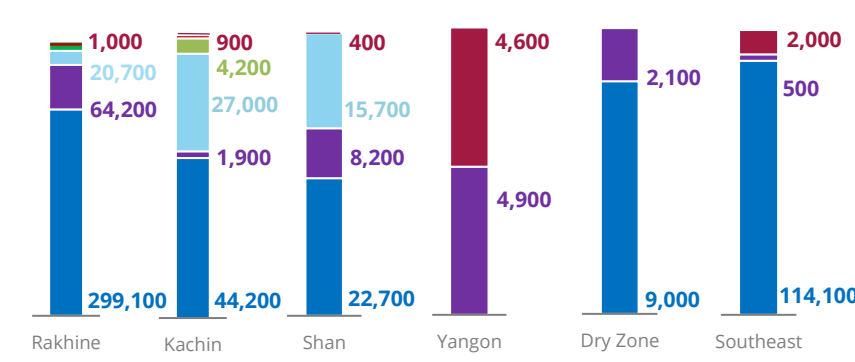
The designations employed and the presentation of material in the map do not imply the expression of any opinion on the part of WFP concerning the legal or constitutional status of any country, territory, city or sea, or concerning the delimitation of its frontiers.

© World Food Programme 2022

## PEOPLE ASSISTED Myanmar Country Strategic Plan



## OPERATIONAL PROFILE By Activity – July 2022



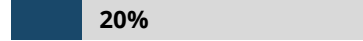
## FUNDING

**Net funding requirements** (6 months – US\$)  
September 2022 – February 2023

Myanmar Country Strategic Plan (CSP)

Emergency Relief Assistance

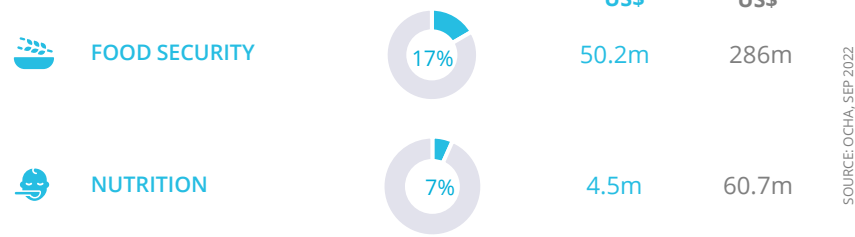
**2022 Humanitarian Response Plan**  
January – December 2022



**US\$67.7m**  
**US\$48.2m**

**Contributions: US\$ 165.8m**  
**Requirements: US\$ 825.7m**

## WFP-LED AND SUPPORTED SECTORS



## WFP Emergency Classification: Corporate Attention

[For more information, see the latest Country Brief](#)

[Myanmar Country Strategic Plan \(2018-2022\)](#)

