



CCCM SITE MONITORING: Khaung Doke Khar Camp



March-2018



Township: Sittwe (Rakhine, MYANMAR)

Geographic Data: Vil. Tract / Town : Khaung Doke Kar

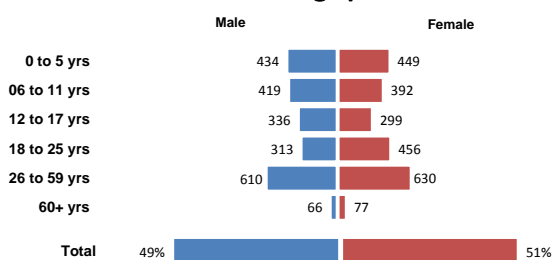
Village/Ward : Khaung Doke Kar

 
4,481 people 799 households

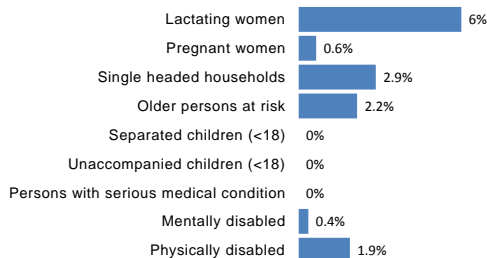
 
52% children 3% elderly

 
9 new borns 0 deaths

Demographic data

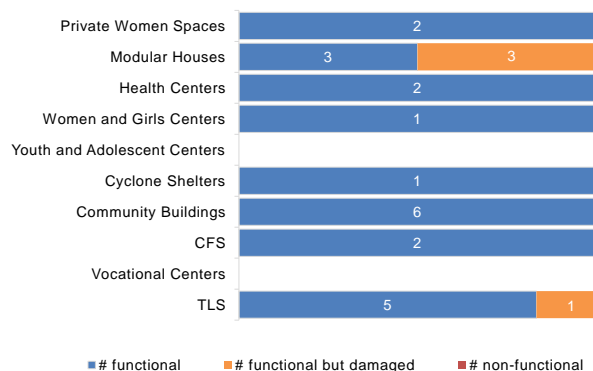


Vulnerabilities data

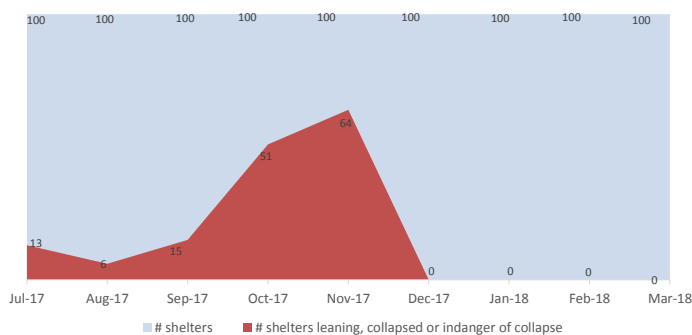


Camp Management or Focal Point Agency: LWF

Community infrastructure damage



Shelter rehabilitation and repair



Sector Overview



CCCM	# of coordinations meetings with CMCs	2
	# of meetings with service providers	2
Community Based Group		
	# of meetings held	
Camp Based Disaster Management Committee (CBDMC)		0
Peer to Peer Grandfather and Grandmother Group		1
Nutrition group		1
Mother Group (MG)		1
Food Management Committee (FMC)		2
Father Group		1
Child Protection Group		1



Health	Health facility presence	Yes
	# of NGO clinics	2
	# of Government clinics	0
	IDPs access to nearby health facility	Yes

NFI

NFI	# of HHs receiving WaSH consumables (soap, towel)	799
------------	---	-----



	# of HHs receiving Sanitary Kits / Dignity Kits	799
Shelter	# of temporary shelters (8 – 10 units)	100
	# of informal / makeshift shelters	0
	Date of the last Shelter Cluster assessment	01-Jan-18



	Functional	Non-functional
# Lightings at Latrines	0	0
#Lighting at other areas of camps	0	0
WASH		
# of Hand Pumps	59	8 (12%)
# of Ponds	0	0
# of Latrines	200	0
# of Solid Waste Management System	0	0



Service Delivery Actors in the Camp

