

CCCM SITE MONITORING: Nget Chaung 2 Camp


March-2018


Township: Pauktaw (Rakhine, MYANMAR)


Geographic Data: Vil. Tract / Town : Pon Nar Gyi


Village/Ward : Cha Eik

Demographic data

 **4,079**
people

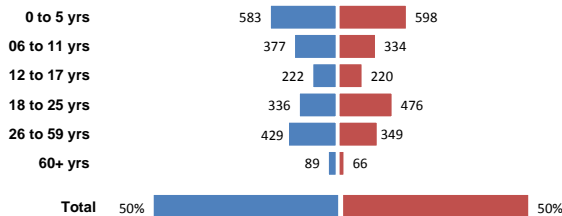
 **905**
households

 **57%**
children

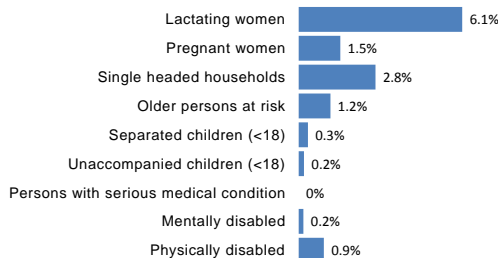
 **4%**
elderly

 **3**
new borns

 **1**
deaths

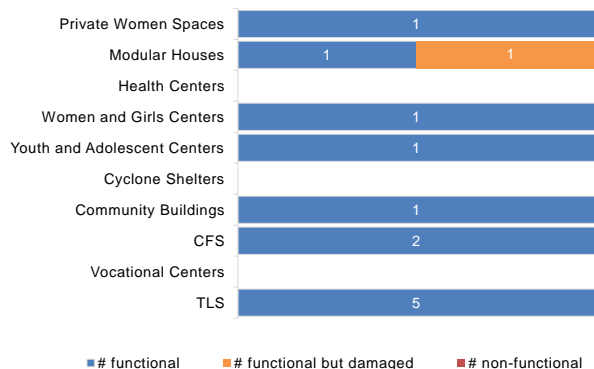


Vulnerabilities data

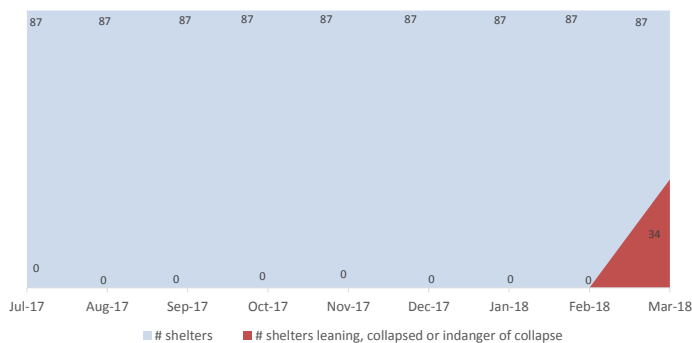


Camp Management or Focal Point Agency: LWF

Community infrastructure damage



Shelter rehabilitation and repair



Sector Overview



CCCM	# of coordinations meetings with CMCs	1
	# of meetings with service providers	1
Community Based Group	# of meetings held	
Youth Development Group (YDG)		1
Women Development Group (WDG)		1
Parent Teacher Association (PTA)		1
Fire Safety Volunteer Group (FSVG)		1
Child Development Group (CDG)		1
Camp Management Committee (CMC)		1



Health	Health facility presence	No
	# of NGO clinics	0
	# of Government clinics	0
	IDPs access to nearby health facility	Yes

NFI

NFI	# of HHs receiving WaSH consumables (soap, towel)	905
------------	---	-----



	# of HHs receiving Sanitary Kits / Dignity Kits	905
Shelter	# of temporary shelters (8 – 10 units)	87
	# of informal / makeshift shelters	160
	Date of the last Shelter Cluster assessment	01-Mar-18



	Functional	Non-functional
# Lightings at Latrines	0	0
#Lighting at other areas of camps	0	0
WASH		
# of Hand Pumps	5	0
# of Ponds	6	6
# of Latrines	122	16 (12%)
# of Solid Waste Management System	5	0



Service Delivery Actors in the Camp

