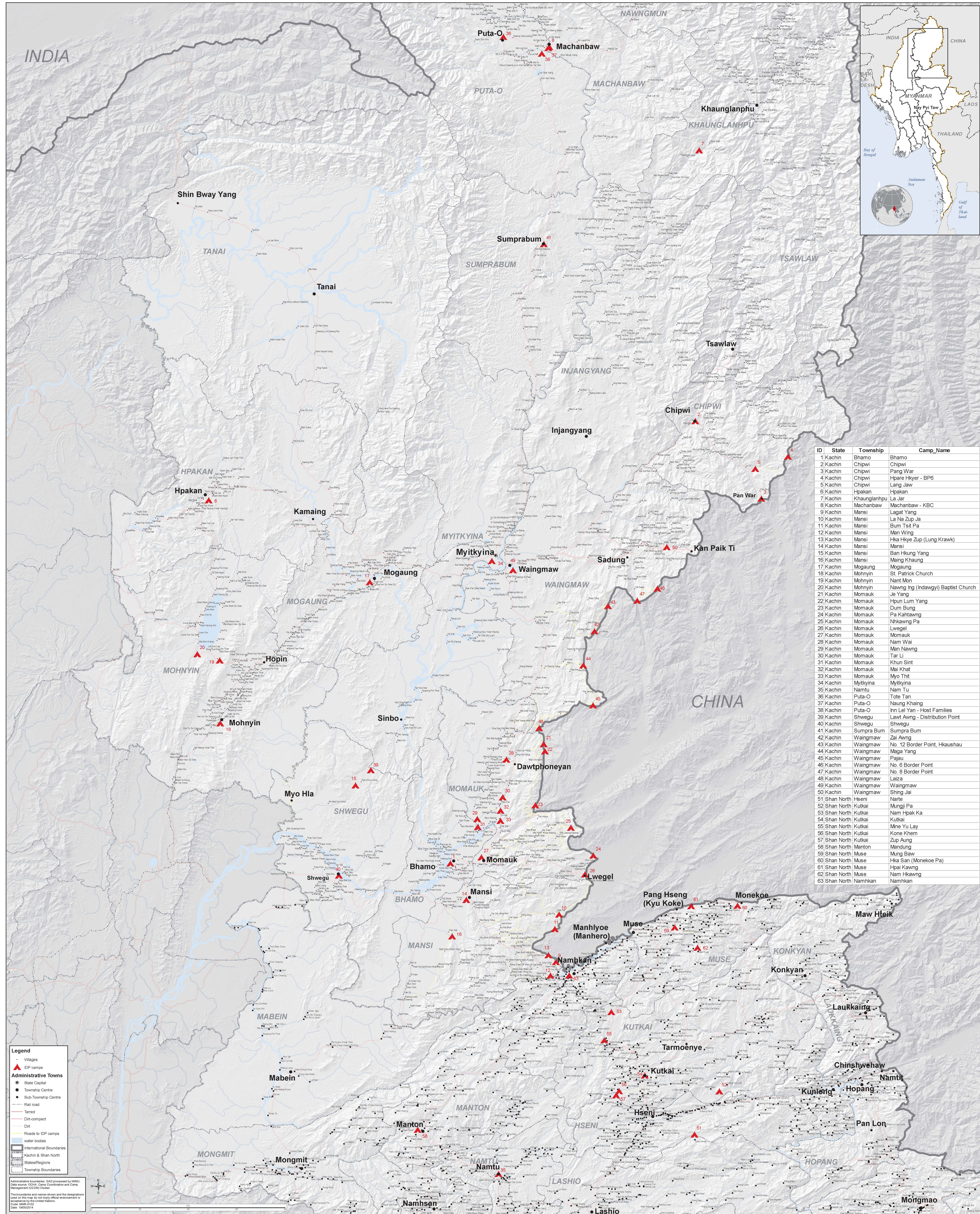


# MYANMAR: IDP Sites in Kachin and northern Shan States (1 May 2014)



ID	State	Township	Camp Name
1	Kachin	Bhamo	Bhamo
2	Kachin	Chipwi	Chipwi
3	Kachin	Chipwi	Pang War
4	Kachin	Chipwi	Hpare Hkyer - BP6
5	Kachin	Chipwi	Lang Jaw
6	Kachin	Hpakant	Hpakant
7	Kachin	Khaunglanphu	La Jar
8	Kachin	Machanbaw	Machanbaw - KBC
9	Kachin	Mansi	Lagat Yang
10	Kachin	Mansi	La Na Zup Ja
11	Kachin	Mansi	Bum Tset Pa
12	Kachin	Mansi	Man Wing
13	Kachin	Mansi	Hka Hkye Zup (Lung Krawk)
14	Kachin	Mansi	Mansi
15	Kachin	Mansi	Ban Hkung Yang
16	Kachin	Mansi	Maing Khaung
17	Kachin	Mogaung	Mogaung
18	Kachin	Mohnyin	St. Patrick Church
19	Kachin	Mohnyin	Nant Mon
20	Kachin	Mohnyin	Nawng Ing (Indawgyi) Baptist Church
21	Kachin	Momaik	Je Yang
22	Kachin	Momaik	Hpun Lum Yang
23	Kachin	Momaik	Dum Bung
24	Kachin	Momaik	Pa Khaung
25	Kachin	Momaik	Nhkawng Pa
26	Kachin	Momaik	Lwegel
27	Kachin	Momaik	Momaik
28	Kachin	Momaik	Nam Wai
29	Kachin	Momaik	Man Nawng
30	Kachin	Momaik	Tar Li
31	Kachin	Momaik	Khun Sint
32	Kachin	Momaik	Mai Khat
33	Kachin	Momaik	Myo Thit
34	Kachin	Myitkyina	Myitkyina
35	Kachin	Nanttu	Nanttu
36	Kachin	Putao	Tote Tan
37	Kachin	Putao	Naung Khaung
38	Kachin	Putao	Inn Lei Yan - Host Families
39	Kachin	Shwegu	Lawt Awng - Distribution Point
40	Kachin	Shwegu	Shwegu
41	Kachin	Sumpra Bum	Sumpra Bum
42	Kachin	Waingmaw	Zai Awng
43	Kachin	Waingmaw	No. 12 Border Point, Hkaushau
44	Kachin	Waingmaw	Maga Yang
45	Kachin	Waingmaw	Pajau
46	Kachin	Waingmaw	No. 6 Border Point
47	Kachin	Waingmaw	No. 8 Border Point
48	Kachin	Waingmaw	Laiza
49	Kachin	Waingmaw	Waingmaw
50	Kachin	Waingmaw	Shing Jai
51	Shan North	Hseni	Narte
52	Shan North	Kutkai	Mungji Pa
53	Shan North	Kutkai	Nam Hpak Ka
54	Shan North	Kutkai	Kutkai
55	Shan North	Kutkai	Mine Yu Lay
56	Shan North	Kutkai	Kone Khem
57	Shan North	Kutkai	Zup Aung
58	Shan North	Manton	Mandung
59	Shan North	Muse	Mung Baw
60	Shan North	Muse	Hka San (Monekoe Pa)
61	Shan North	Muse	Hpai Kawng
62	Shan North	Muse	Nam Hkawang
63	Shan North	Namkhan	Namkhan

**Legend**

- Villages
- IDP camps
- Administrative Towns
  - State Capital
  - Township Centre
  - Sub-Township Centre
- Rail road
- Tarred
- Dirt-compact
- Dirt
- Roads to IDP camps
- water bodies
- International Boundaries
- Kachin & Shan North
- States/Regions
- Township Boundaries

Administrative boundaries: DAC processed by MIMU  
 Data source: OCHA, Camp Coordination and Camp Management (CCCM) Cluster  
 The boundaries and names shown and the designations used on this map do not imply official endorsement or acceptance by the United Nations.  
 Code: MMR-0102  
 Date: 11/05/2014