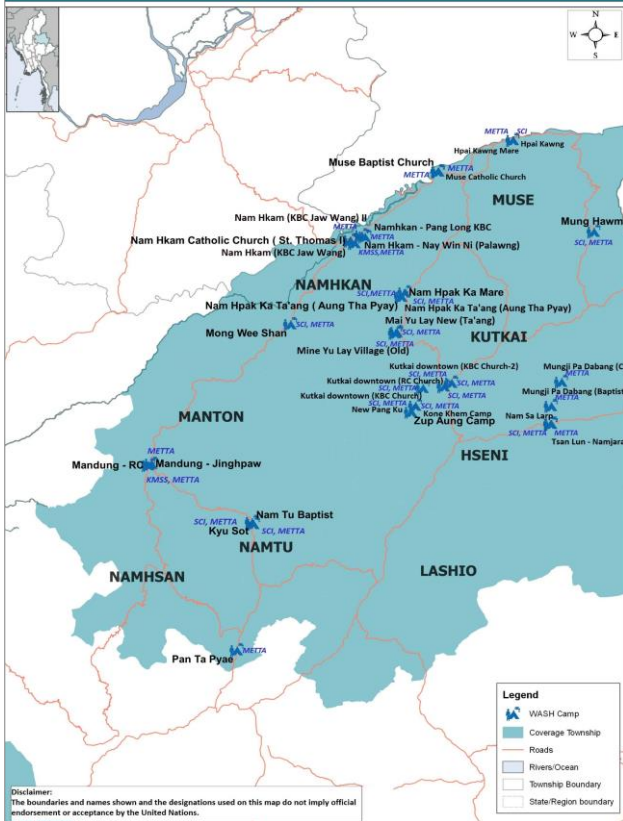


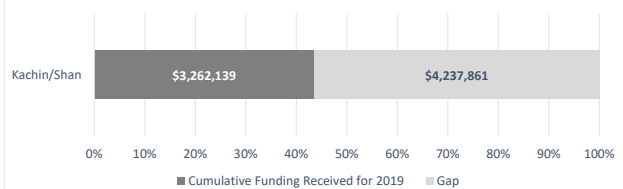
WASH Cluster 2019 Q3 - 4W, NORTHERN SHAN STATE (as of 30 September 2019)



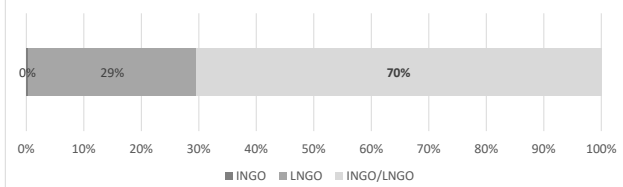
Gap in active camps / township	Partners	Total population	% Water Gap	% Sanitation Gap	% Hygiene Gap
Hseni	SCI, Metta	615	37%	37%	0%
Kutkai	SCI, Metta	6889	29%	35%	5%
Lashio	Metta	1670	100%	94%	0%
Manton	KMSS, Metta	370	0%	20%	0%
Muse	SCI, Metta	1667	60%	0%	13%
Namhkan	KMSS, Metta, SCI	1972	25%	35%	1%
Namhsan	Metta	1120	100%	100%	0%
Namtu	SCI, Metta	773	26%	12%	0%
Nawngkhio	Metta	53	100%	100%	0%
<b>Total</b>	<b>(in active camps)</b>	<b>15,129</b>	<b>45%</b>	<b>41%</b>	<b>4%</b>

Gap in village / township	Partners	Total population	% Water Gap	% Sanitation Gap	% Hygiene Gap
Laukkaing (Kokang SAZ)	HPA	4171	77%	19%	0%
<b>Total</b>	<b>(in active camps)</b>	<b>4,171</b>	<b>77%</b>	<b>19%</b>	<b>0%</b>

Funding Received/Gap as of 2019-Q3 (US\$)

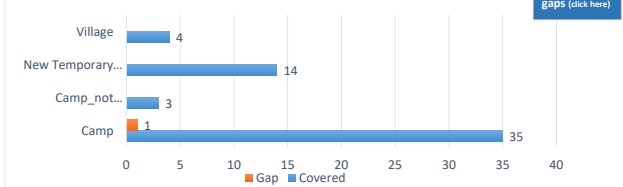


Kachin/Shan Funding Splits INGO, LNGO



DONORS: GFFO, HARP, OFDA, SANYA, MHF, FFO, USAID, AA (Caritas), ECHO, MoFA Lux, WHH-AA, Canada, UNICEF

Number of Sites - Coverage/Gaps



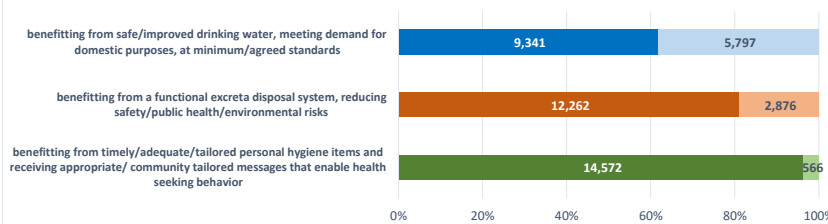
Accountability to Affected Population

AAP- independent cluster team monitoring (5)

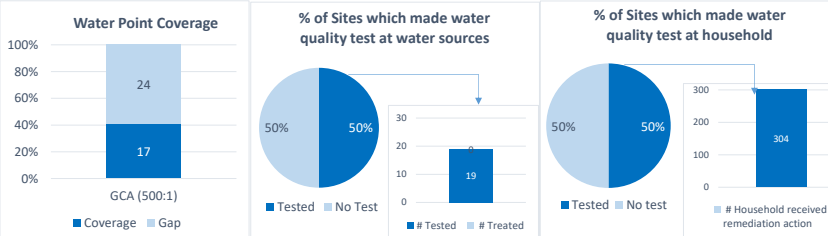


Specific WASH community feedback (click here)

Number of ppl Covered against 2019 HRP targets

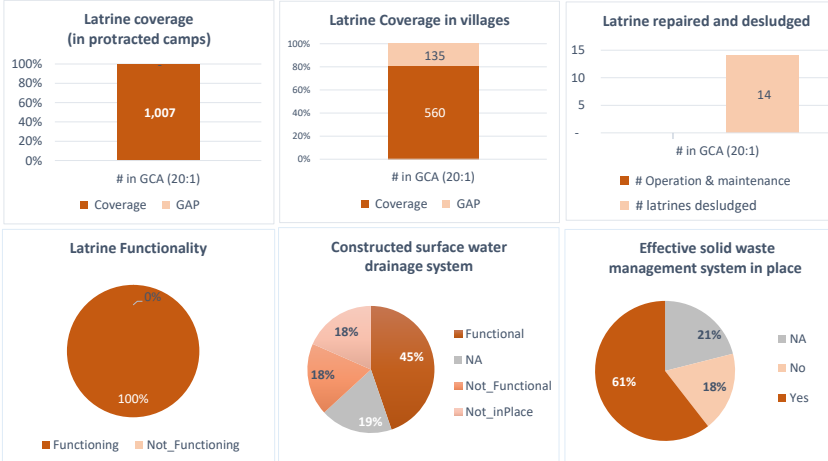


Water Quantity & Water Quality in protracted camps

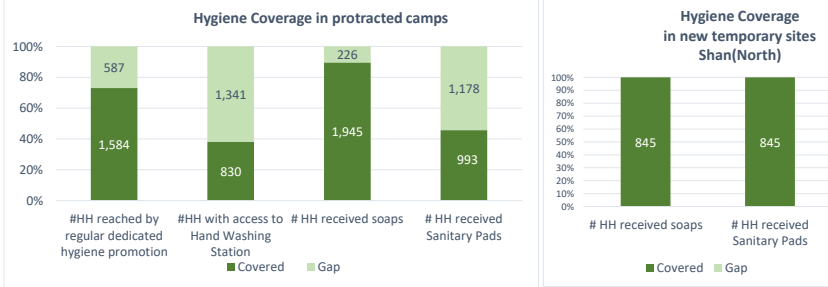


Sanitation Facilities

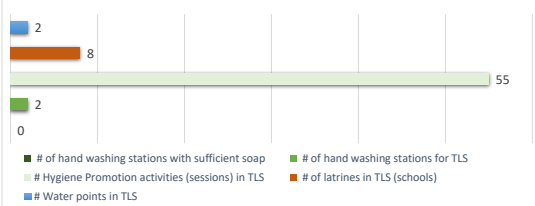
Sanitation services



Hygiene Items



WASH in Temporary Learning Spaces



% Sites with TLS/CFs

