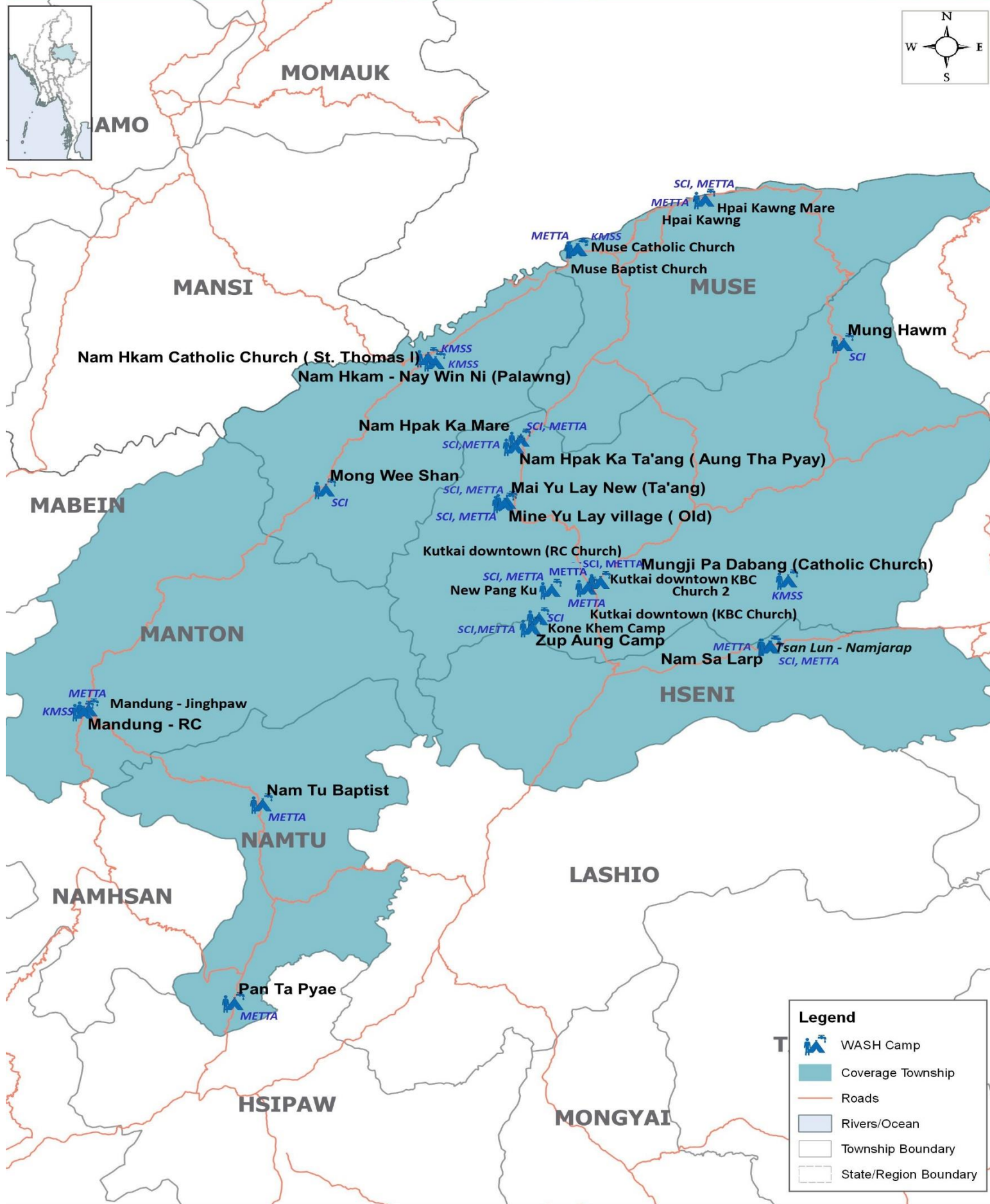


WASH Cluster 2019 Q1\_4 W, NORTHERN SHAN STATE (as of 31 March 2019)



**AAP**

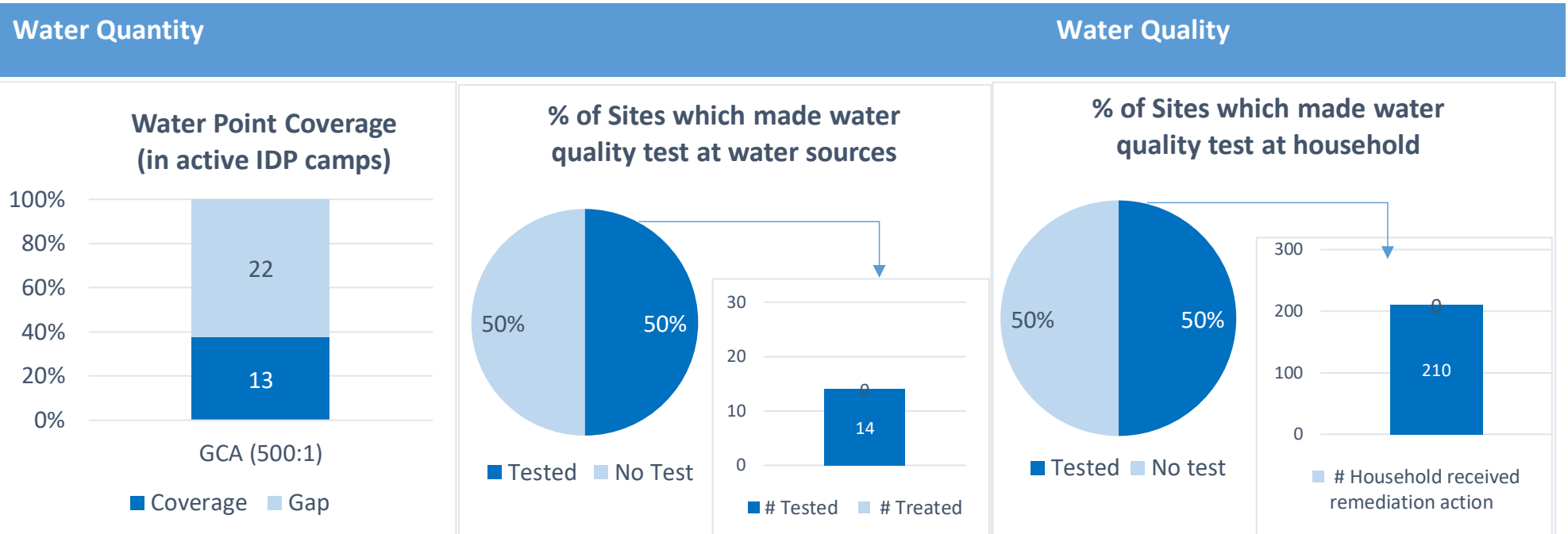
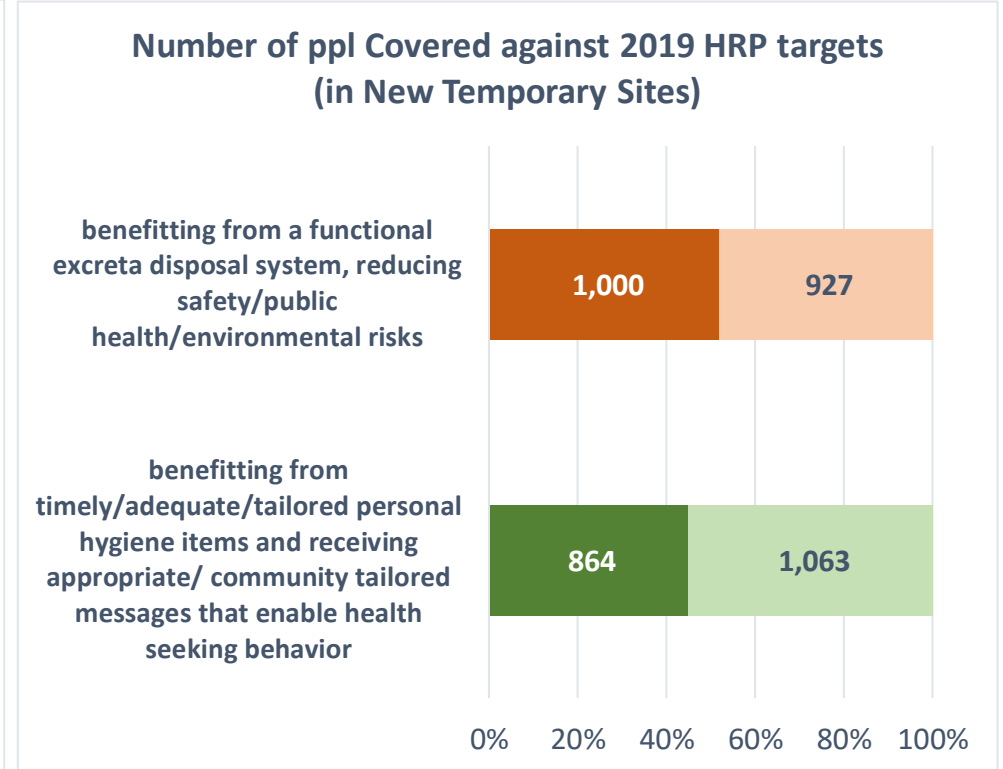
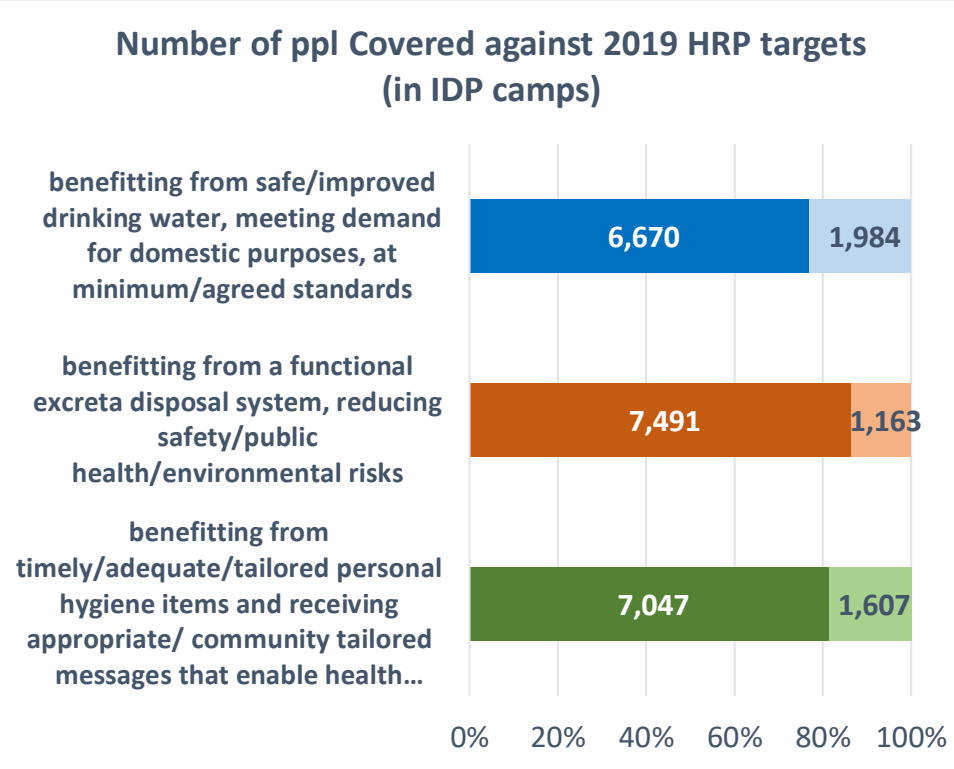
**WATER**  
- Water Shortage in dry season

**SANITATION**  
- No Sanitation issue

**HYGIENE**  
- No Hygiene issue

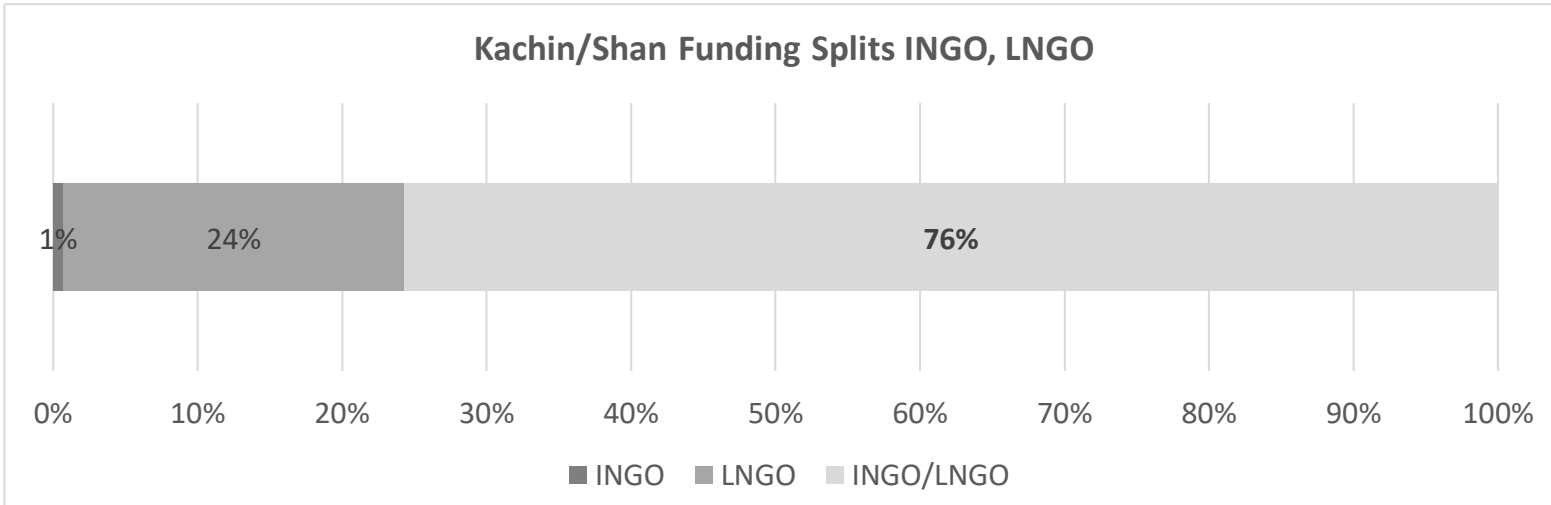
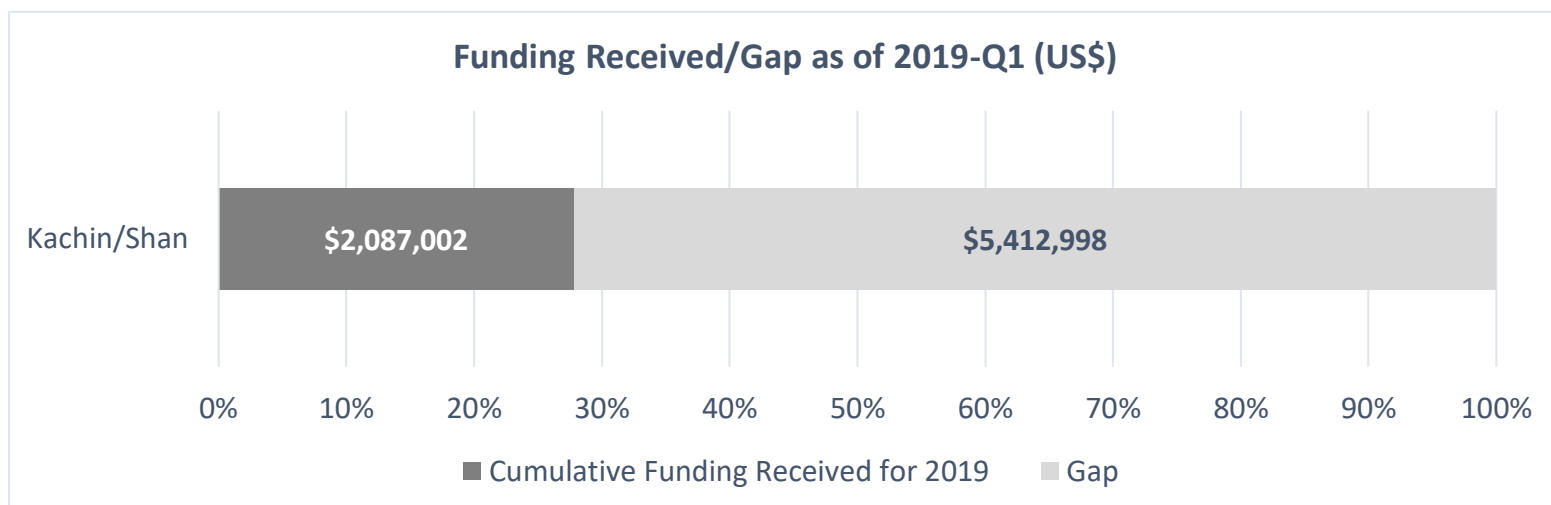
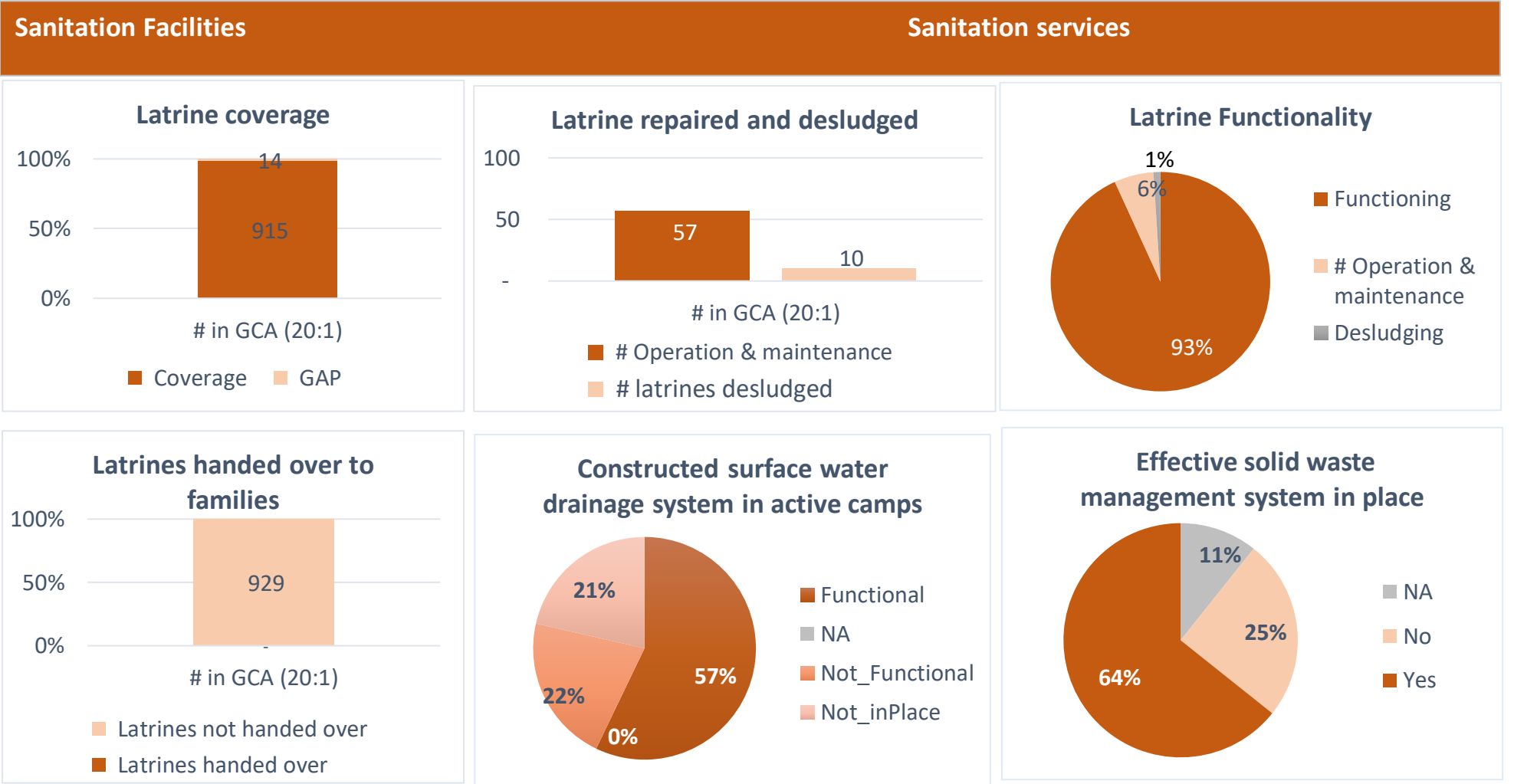
WASH Cluster conducted 13 emergency joint assessment with OCHA and UNHCR.

**Cluster Team**  
# Field visits  
**8**



Gap in active camps / township	Partners	Total population	% Water Gap	% Sanitation Gap	% Hygiene Gap
Hseni	SCI, Metta	341	0%	0%	0%
Kutkai	KBC, KMSS, SCI, Metta	4557	3%	8%	6%
Manton	KMSS, Metta	317	0%	3%	0%
Muse	KMSS, SCI, Metta	1594	62%	0%	62%
Namhkan	KMSS, SCI	1055	7%	29%	0%
Namtu	Metta	472	100%	32%	6%
<b>Total (in active camps)</b>		<b>8,336</b>	<b>20%</b>	<b>10%</b>	<b>15%</b>

Gap in new temporary sites / township	Partners	Total population	% Water Gap	% Sanitation Gap	% Hygiene Gap
Hseni	SCI	1927	100%	48%	55%
<b>Total (in active camps)</b>		<b>1,927</b>	<b>100%</b>	<b>48%</b>	<b>55%</b>



**DONORS:** CIDA, DFID, ECHO, GFFO, HARP, Irish Aid, LDS, MHF, MoFA Lux, UNICEF, WHH-BMZ, AA (Caritas), SANYA, FFO, USAID, OFDA

