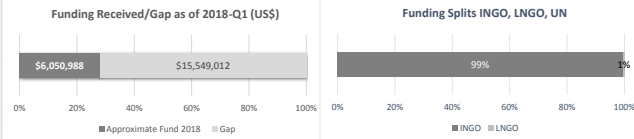
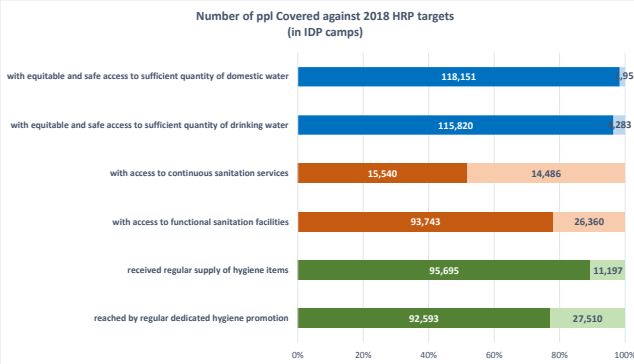
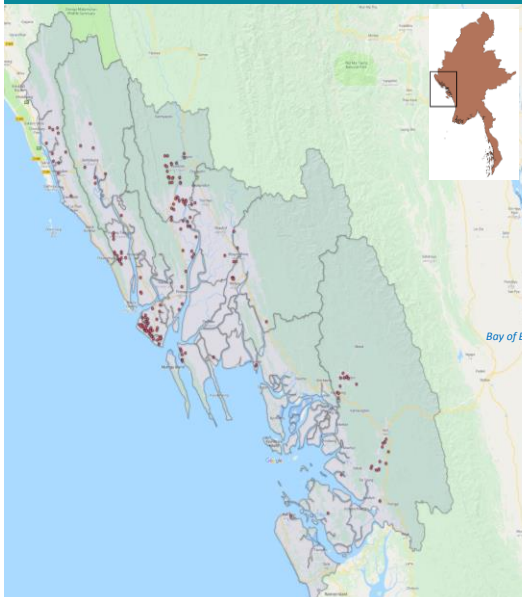
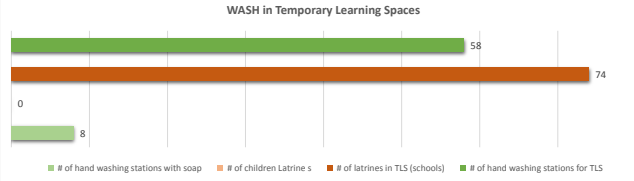
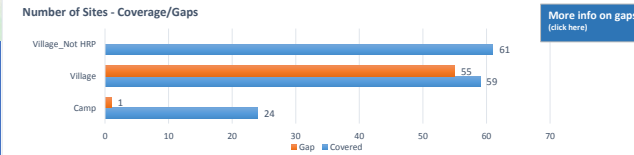


RAKHINE STATE (2018-Qtr 1- 4W Analysis, as of 31 March 2018)



DONORS: BMZ, DRC internal, ECHO, German Humanitarian Assistance (AA), GIZ, HARP, HIF, LIFT, MidP, MHF, OFDA, Ole Kirk's Foundation, SDC, UNICEF, USA, USA (OFDA)



Gap in active camps / township	Partners	Total population	% Water Gap	% Sanitation Gap	% Hygiene Gap
Ann	Arche Nova	14,817	100%	100%	100%
Buthidaung	MHDO	7,969	54%	98%	100%
Kyaukpyu	Oxfam	992	0%	0%	100%
Kyauktaw	CDN, MA, UK	19,012	96%	98%	100%
Maungdaw	MHDO	10,023	59%	98%	100%
Myebon	Ri	3,052	28%	0%	100%
Pauktaw	DRC, SCI, SI	30,391	13%	31%	89%
Rathedaung	MHDO	13,182	31%	80%	100%
Sittwe	CDN, DRC, MA, UK, Oxfam, SCI, SI	115,814	8%	50%	65%
<b>Total (in active camps)</b>		<b>215,252</b>	<b>51%</b>	<b>76%</b>	<b>89%</b>

