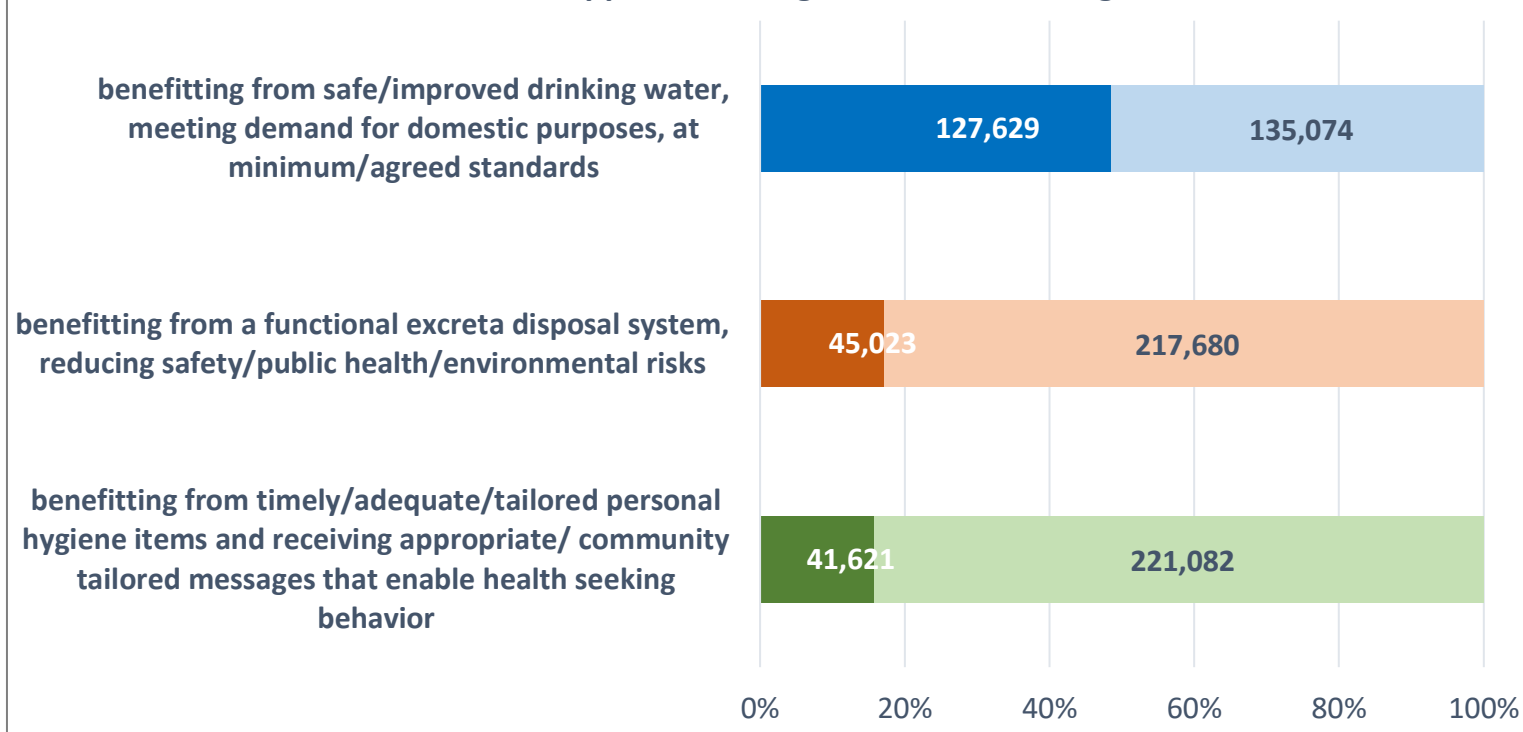
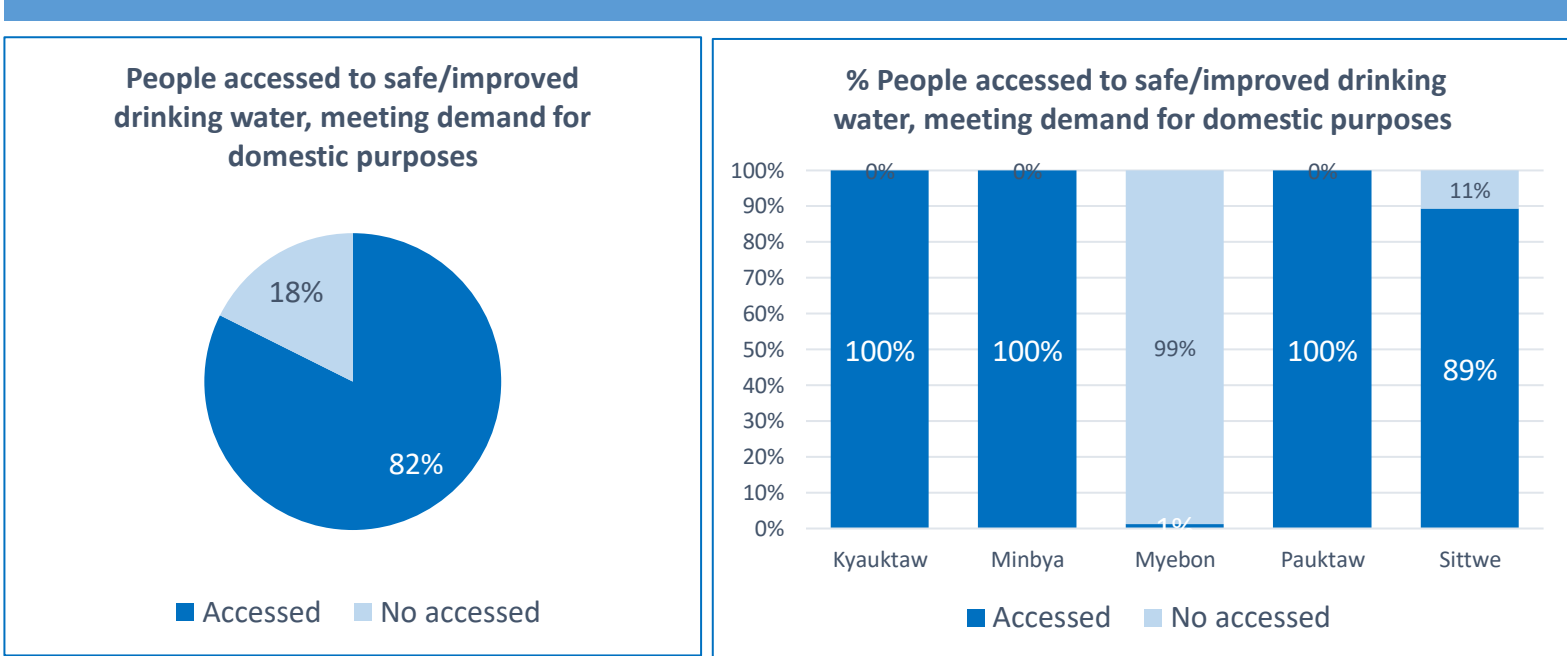


RAKHINE STATE - non-IDP Sites (2020 - Qtr 3 - 4W Analysis, as of 30 September 2020)

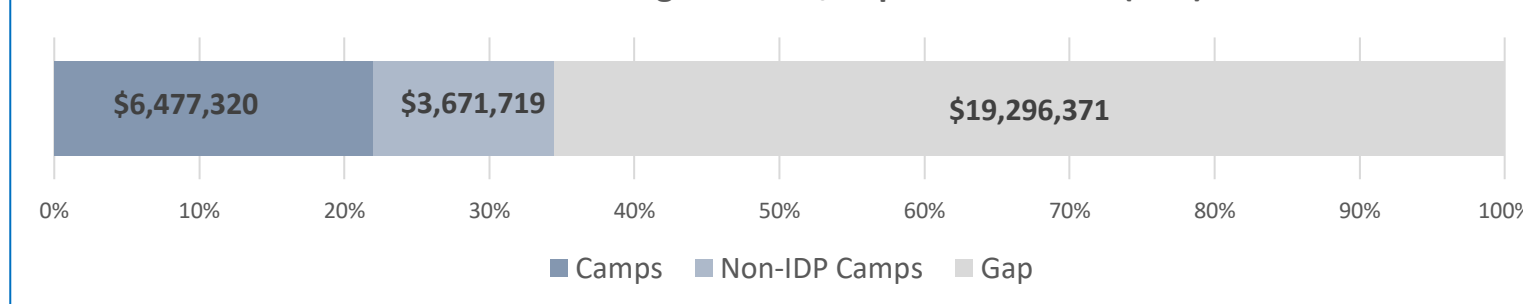
Number of ppl Covered against 2020 HRP targets



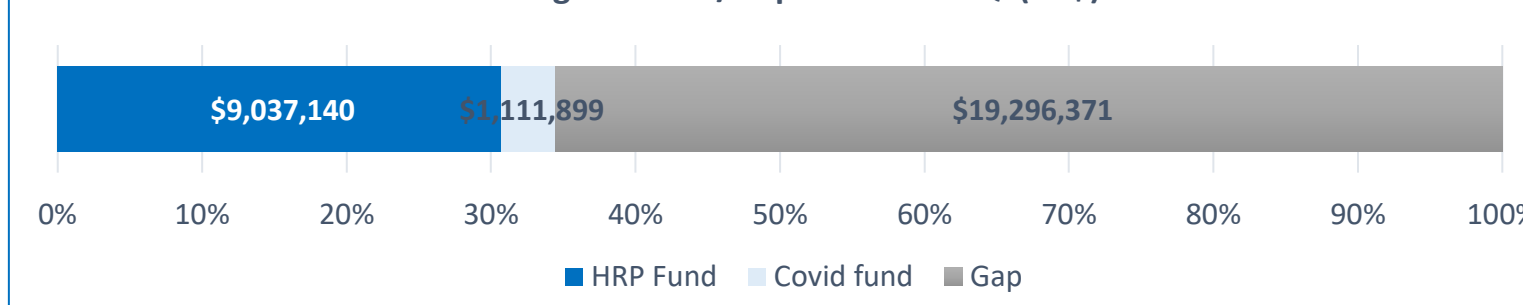
WATER Quantity



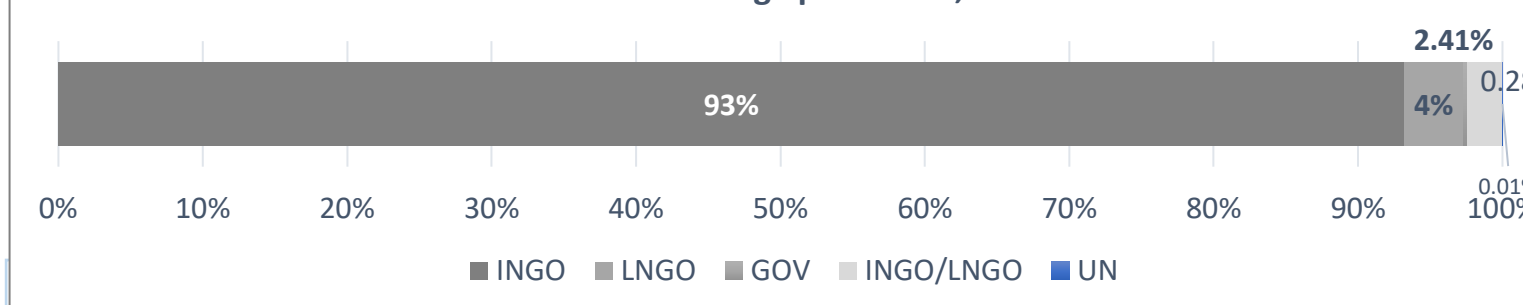
Cumulative Funding Received/Gap as of 2020-Q3(US\$)



Cumulative Funding Received/Gap as of 2020-Q3(US\$)

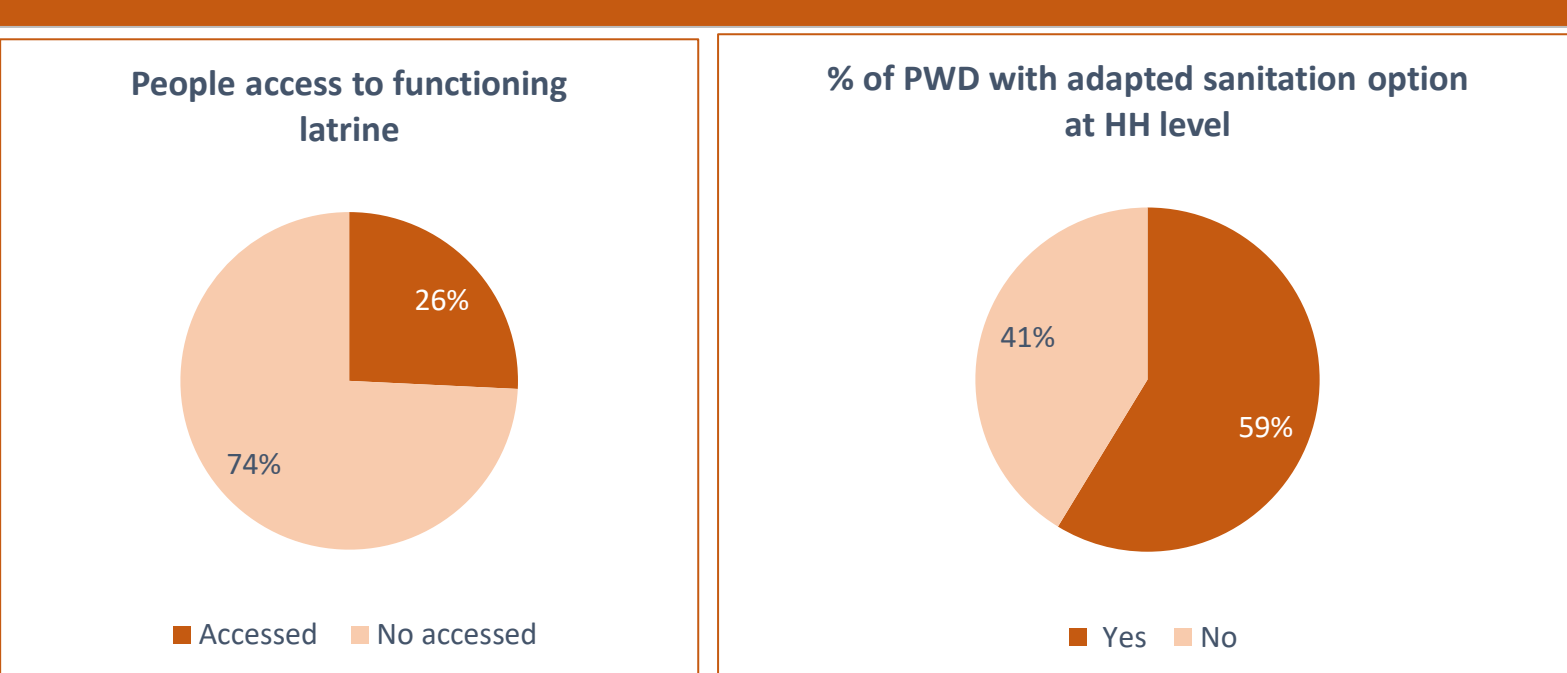


Rakhine Funding Splits INGO, LNGO

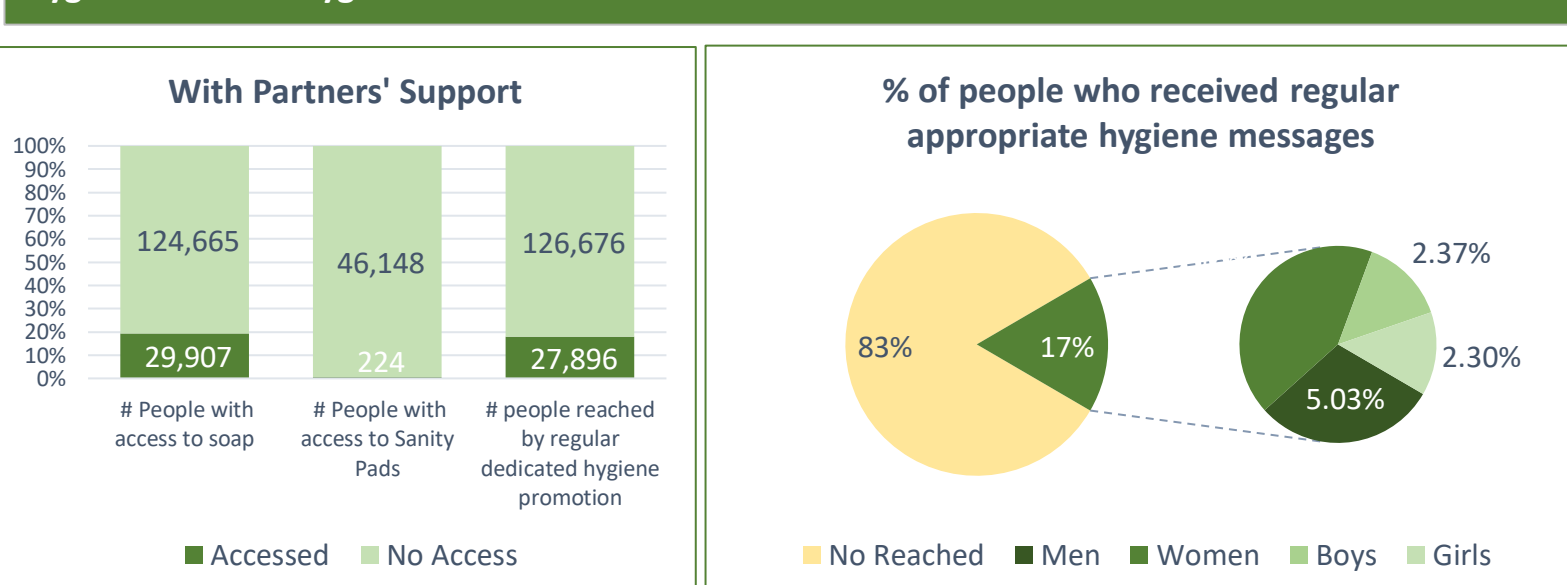


DONORS: AA, ADH, BHA-USAID, BMZ, CDC, DFID/HARP, ECHO, FFO, GAC, GHA (AA), GIZ, IR Mauritius, IR UK, IR USA, MA HQ, MA-UK HQ, MHF, OFDA, SIDA, UASID/Japan-fund, ZOA, UNICEF, HARP-F

Sanitation in communities



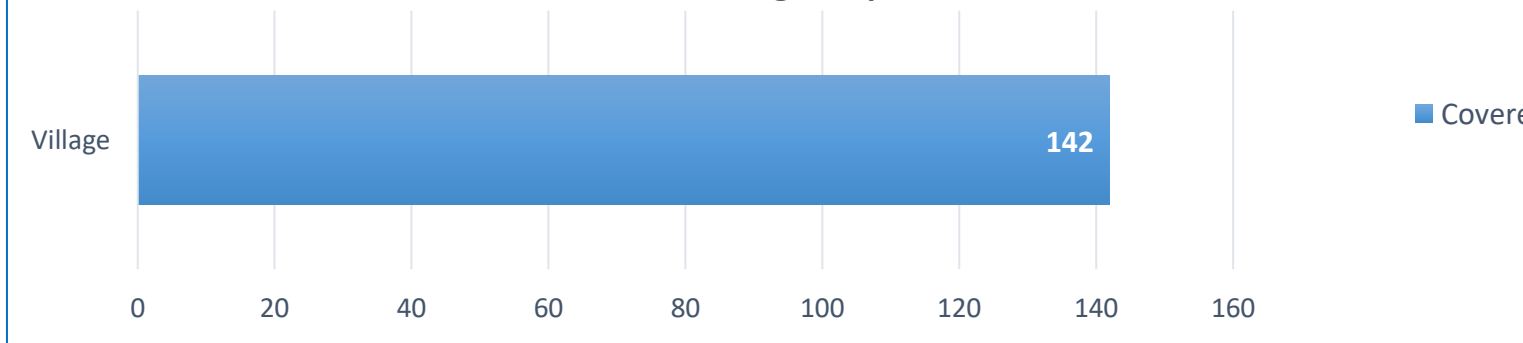
Hygiene Items & Hygiene Promotion



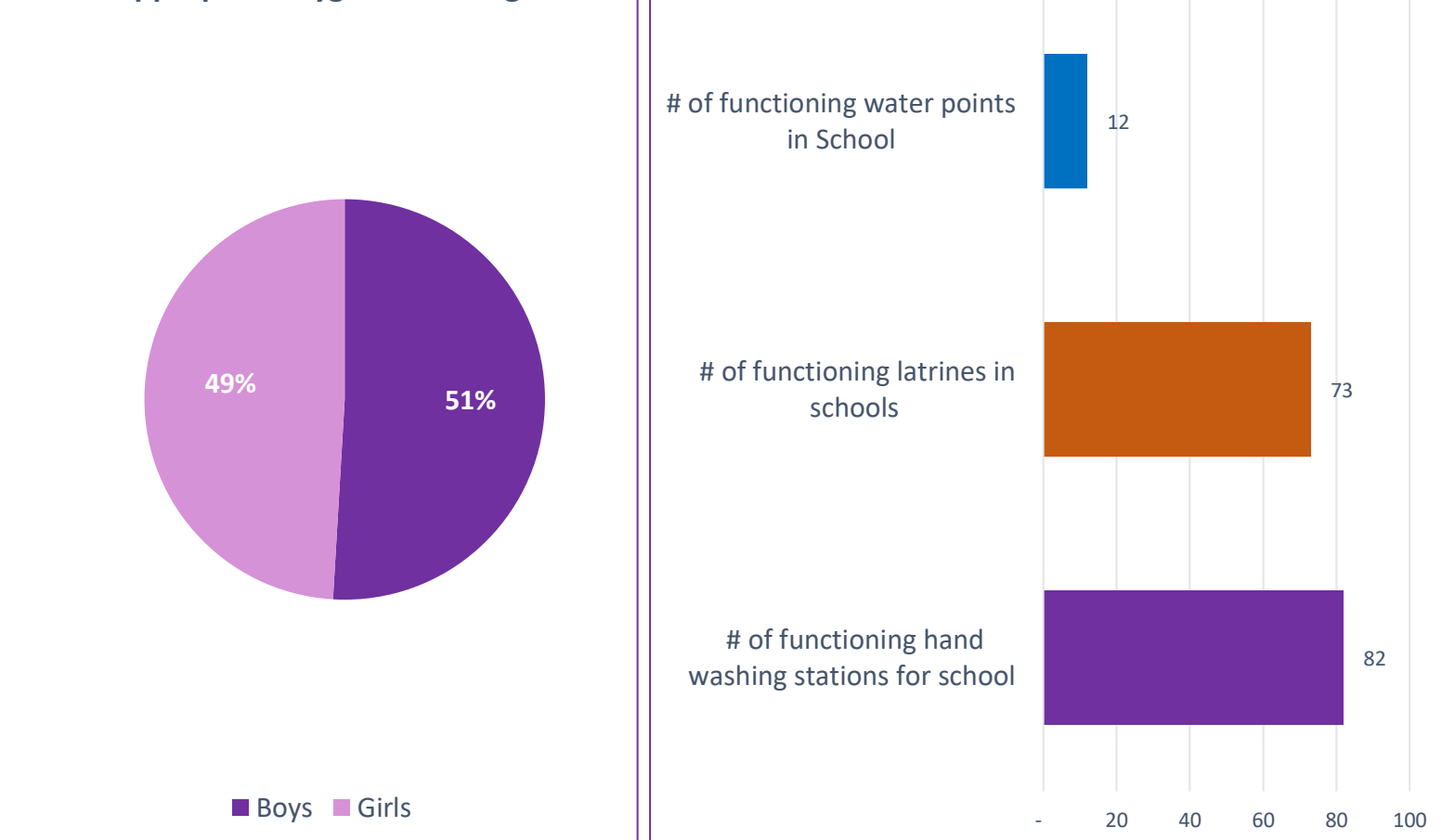
Education - WASH in School

Gap in active villages/ Township	Partners	# of villages	Total population	% People benefitting from safe/improved drinking water, meeting demand for domestic purposes	% People benefitting from a functional excreta disposal system, reducing safety/public health/environmental risks	%People benefitting from personal hygiene items and receiving appropriate hygiene message
Kyauktaw	CDN	1	365	100%	18%	0%
Minbya	ACF	34	24,963	100%	51%	0%
Myebon	RI	27	16,824	1%	1%	17%
Pauktaw	SCI, SI	14	15,380	100%	11%	29%
Sittwe	CDN, MA-UK, OXSI(Oxfam), OXSI(SI)	66	97,040	89%	26%	30%
Total	(in active villages)	142	154,572	83%	26%	24%

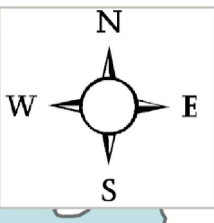
Number of Sites - Coverage/Gaps



% of Students received appropriate hygiene messages



WASH Cluster 2020 Q3_4 W , RAKHINE STATE (Non-IDP sites)
(as of 30 September 2020)



- Legend**
- WASH Village
 - Coverage Township
 - Roads
 - Rivers/Ocean
 - Township Boundary
 - State/Region boundary

Disclaimer:
The boundaries and names shown and the designations used on this map do not imply official endorsement or acceptance by the United Nations.