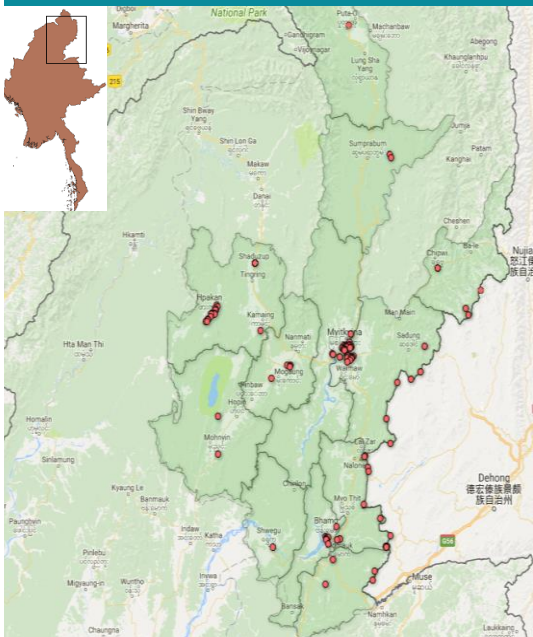
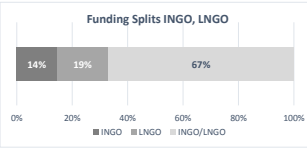
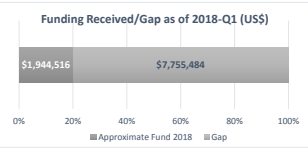
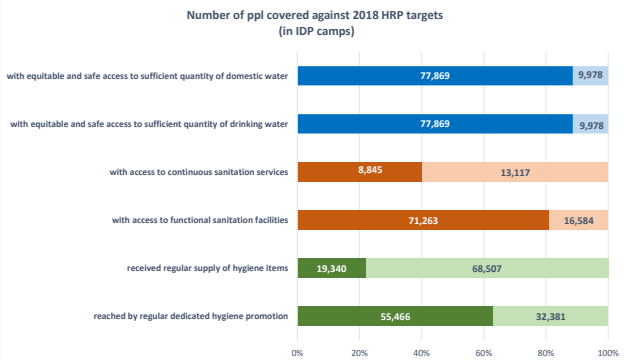


KACHIN STATE (2018-Qtr 1- 4W Analysis, as of 31 March 2018)



Gap in active camps / township	Partners	Total population	% Water Gap	% Sanitation Gap	% Hygiene Gap
Bhamo	Metta_Si	8,716	18%	30%	45%
Chipwi	KBC_KMSS_Shalom	2,422	45%	8%	100%
Hpakant	KBC_KMSS_KBC_Shalom	3,617	12%	22%	100%
Mansi	KBC_KMSS_Metta_SCI_WPN	11,851	0%	9%	70%
Mogaung	KBC_KMSS	431	0%	12%	100%
Mohryin	KBC_KMSS	165	0%	29%	100%
Momauk	KMSS_Metta_Si_KBC_WPN	27,450	11%	20%	68%
Myitkyina	KBC_KMSS_Shalom	7,412	0%	22%	100%
Putao	KBC	281	0%	43%	100%
Shwegu	Metta	428	0%	0%	0%
Sumpabum	KBC	815	100%	0%	100%
Tanai	KMSS	936	51%	63%	100%
Waingmaw	KBC_KMSS_Metta_Shalom	23,194	3%	20%	100%
<b>Total (in active camps)</b>		<b>87,718</b>	<b>11%</b>	<b>21%</b>	<b>87%</b>



DONORS: CIDA, DFID, ECHO, GFFO, HARP, Irish Aid, LDS, MHF, MoFA Lux, UNICEF, WHH-BMZ

