

The MIMU 3W gathers inputs from participating humanitarian and development agencies on **Who is doing What, Where**, across Myanmar. This exercise is currently conducted every 6 months, gathering information on agencies' activities at village/township level (MIMU Village level 3W) as well as in IDP camps (MIMU Camp 3W).

174 agencies contributed to the April 14 3W, providing information on their activities in the 18 sectors and 133 sub-sectors defined through the existing technical/sector working groups. There is still likely to be under-reporting of the specific activities of field-based local NGOs and CBOs.

**This Overview describes Projects under Implementation at township, village tract or village level** in Rakhine, reported as of March 28, 2014. It *does not include* IDP-response activities (camp and village based projects) – these are reflected separately in the MIMU Camp 3W products.

Further information on **planned and recently completed** projects is available from the 3W dataset, published on the MIMU website.

## 1. Organizations active at Village level in Rakhine

In total, 47 agencies reported activities in Rakhine state, 40 engaged in non-IDP response activities and 7 in IDP Response activities (108 IDP camps and 181 villages). With under-reporting of village-based health activities in this round, the number of villages with activities related to the conflict may be higher.

For the development focused (non-IDP response) activities, 40 organizations reported projects currently under implementation in Rakhine that are village or township based (note that this analysis does not include camp-based activities for internally displaced populations). The majority are NGOs. There is some level of agency activity reported in most village tracts, with agencies most concentrated in Sittwe (19 agencies), and in the townships close to and north of Sittwe (Myebon, Kyaukpyu, Pauktaw and Minbya with 10-14 agencies active in each of these townships).

### Agencies reporting non-IDP response Activities

Organisation Type	INGO	NNGO	UN	Red Cross	CBO*	Donor	Embassy	BBO*	Total
<b>Countrywide</b>	<b>76</b>	<b>60</b>	<b>13</b>	<b>4</b>	<b>2</b>	<b>1</b>	<b>1</b>	<b>17</b>	<b>174</b>
<b>Rakhine</b>	<b>18</b>	<b>12</b>	<b>6</b>	<b>2</b>	<b>2</b>				<b>40</b>
BBO* - Border-based Organization				CBO* - Community Based Organization					

## 2. Projects by Sector (Village-level 3W)

125 projects were reported in 14 sectors in 676 villages across Rakhine State - the number of villages is expected to be higher given the under-reporting of health activities. This represents 18% of the total projects reported to the countrywide 3W.

In terms of the number of agencies: Sittwe township has the highest concentration of active organisations (21 agencies), followed by Myebon (15 agencies), Pauktaw and Rathedaung (13 agencies in each), and Buthidaung and Mrauk-U (12 agencies active in each)

In terms of the frequency of project interventions:

- **Health is the most widespread intervention** with 12 organizations reportedly implementing 33 projects in 140 village tracts. In terms of geographic spread, some level of health activity was reported in all 17 townships, though it is reportedly more concentrated in the townships of Sittwe, Maungdaw, Buthidaung, Mrauk-U, Myebon, Thandwe and Toungup. The majority of health interventions are TB Programme (139 village tracts), with a significantly lower number of interventions in other sub-sectors – Reproductive Health Care (17 village tracts), Basic Health Care (17 village tracts) and Malaria Programme (16 village tracts).

*\*\*This round saw an under-reporting of the village tracts and villages with health sector activities in Rakhine - from 450 VTs and 811 villages six months ago to 140 VTs and no villages specified in this round.*

## Overview of the April 2014 3W RAKHINE – Village level / Non-IDP Response

- **Agriculture is the second most commonly reported sector** with activities under implementation by 6 agencies in 268 villages in 7 of the 17 townships in Rakhine – projects are spread over 9 townships, with marginally more in Myebon. The main activities; Agriculture Development (246 villages), with a significantly lower number of interventions in other sub-sectors - Agriculture Inputs, Agriculture Water Resources and Forestry (46 villages), and Capacity Building (38 villages).
- **Protection is the third main sector** with agency activities in 203 villages and 94 village tracts across 13 of the 17 townships in Rakhine, particularly in Myebon (6 projects), Sittwe (5), Mrauk U and Munaung (4 projects in each). These were almost exclusively in 2 sub-sectors - Child Protection (155 villages) and Promoting Gender Equality and Empowerment of Women (55 villages).
- **DRR is the fourth main sector** in Rakhine with 7 organizations active in 162 villages in 10 of the 17 townships. DRR activities are most frequently Community based Disaster Preparedness and Risk Reduction (162 villages), Preparedness and Response Programmes (39 villages), Public Awareness, Education and Training (34 villages) and Multi-hazard Early Warning Systems (29 villages).
- **Non-Agricultural Livelihood/Infrastructure is the fifth main sector of agency activities** with 11 organizations implementing activities in 134 villages (82 village tracts/towns), in 9 of the 17 townships with slightly more projects in Myebon, Maungdaw and Buthidaung. The majority of interventions are Cash for Work (81 villages), Social Recovery (77 villages), Income Generation (66 villages) and Vocational Training (53 villages).
- There is far less activity reported at village level in other sectors; Environment (5 agencies, 88 villages), WASH (5 agencies, 48 villages), Education (7 agencies, 41 villages), Nutrition (6 agencies, 40 villages), Governance (4 agencies, 36 villages), Shelter (2 agencies, 3 villages), Peace Building/ Conflict Prevention (2 agencies across 6 townships), Food and Coordination (1 agency active in each).

Summary Report by Sector in RAKHINE STATE DEVELOPMENT Projects Under Implementation as of March 28, 2014					
Sector	No. of Projects	No. of Organizations	No. of Townships	No. of Village Tracts/Towns	No. of Villages/Wards
Agriculture	8	6	7	135	268
Coordination	1	1	0	0	0
Disaster Risk Reduction	8	7	10	97	162
Education	10	7	11	24	41
Environment	7	5	6	44	88
Food	2	1	3	0	0
Governance	11	4	7	24	36
Health	33	12	17	140**	0**
Logistics	0	0	0	0	0
Mine Action	0	0	0	0	0
Non-Agricultural Livelihoods/ Infrastructure	16	11	9	82	134
Nutrition	9	6	9	48	40
Peace Building/ Conflict Prevention	2	2	6	3	0
Protection	20	11	13	94	203
Shelter	2	2	8	2	3
WASH	8	5	5	36	48
<b>Grand Total (All Sectors)</b>	<b>125 (18%)</b>	<b>40 (23%)</b>	<b>17 (100%)</b>	<b>428 (41%)</b>	<b>676 (17%)</b>

\*\* under-reporting of VT/village level health activities (see note above)

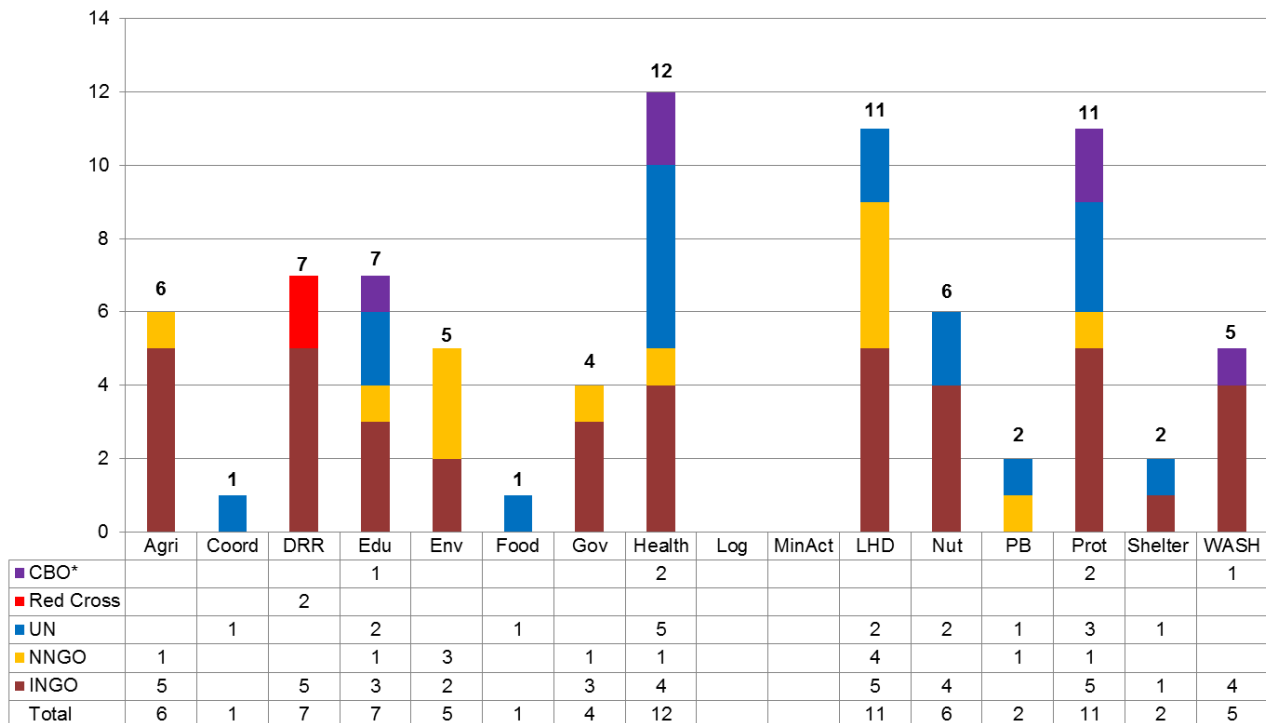
## Overview of the April 2014 3W RAKHINE – Village level / Non-IDP Response

Development Projects Under Implementation by Township, RAKHINE (as of March 28, 2014)						
Township	No. of Projects	No. of Organizations	Village Tracts/Towns		No. of Villages/Wards	
			Number	% of total 3W	Number	% of total 3W
Ann	6	3	1	3	1	0
Buthidaung	16	7	78	100	0	0
Gwa	13	9	23	70	68	39
Kyaukpyu	20	11	53	98	160	58
Kyauktaw	15	9	9	11	14	5
Maungdaw	30	9	73	74	50	14
Minbya	18	10	21	34	54	20
Mrauk-U	19	9	8	9	11	4
Munaung	1	1	0	0	0	0
Myebon	26	14	33	65	91	58
Pauktaw	21	11	27	51	69	35
Ponnagyun	8	7	2	2	1	0
Ramree	11	5	27	53	59	29
Rathedaung	12	8	6	7	8	4
Sittwe	47	19	19	70	26	28
Thandwe	13	6	12	19	17	6
Toungup	15	7	35	67	47	22
<b>Grand Total (Rakhine State)</b>	<b>125 (18%)</b>	<b>40 (23%)</b>	<b>428</b>	<b>41</b>	<b>676</b>	<b>17</b>

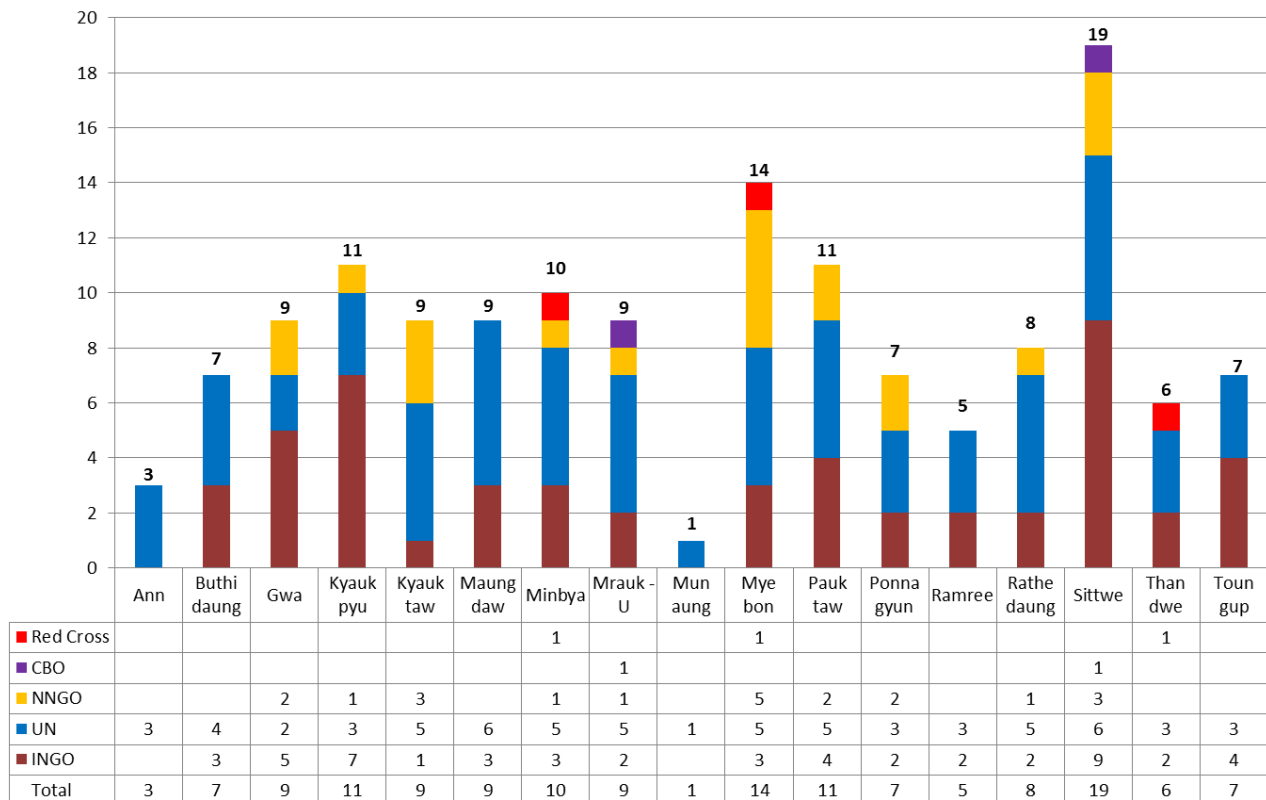
No. of Organizations by Sector and Township in RAKHINE (as of March 28, 2014)																	
Township	Agriculture	Coordination	Disaster Risk Reduction	Education	Environment	Food	Governance	Health	Logistics	Mine Action	Non-Agricultural Livelihoods/ Infrastructure	Nutrition	Peace Building/ Conflict Prevention	Protection	Shelter	WASH	Tsp - Total Orgs
Ann				1				3									3
Buthidaung	1			2		1		4			1	2	1	1		1	7
Gwa			1	1	3		1	3									9
Kyaukpyu	2		1		1		1	3			1	1		4	1	1	11
Kyauktaw								3			2	2	1	2	1		9
Maungdaw	2		1	3		1		6			3	4	1	1		3	9
Minbya	2		1	1				2			4	1		2	1		10
Mrauk-U				1			1	4			3			3	1	1	9
Munaung								1									1
Myebon	2		1	1	2		1	4			3	3		3	1		14
Pauktaw	2		1		1			2			4	3		3	2		11
Ponnagyun	1							3					1	2			7
Ramree							1	2						2	1		5
Rathedaung			1	3	1	1		3				1	1				8
Sittwe			2	2	1		1	6			3	2	1	7	1	1	19
Thandwe			1	2				4						1			6
Toungup			1	3			1	4						1			7
Sector Total	6	1	7	7	5	1	4	12	0	0	11	6	2	11	2	5	

## Overview of the April 2014 3W RAKHINE – Village level / Non-IDP Response

**No. of Organizations by Sector in Rakhine**



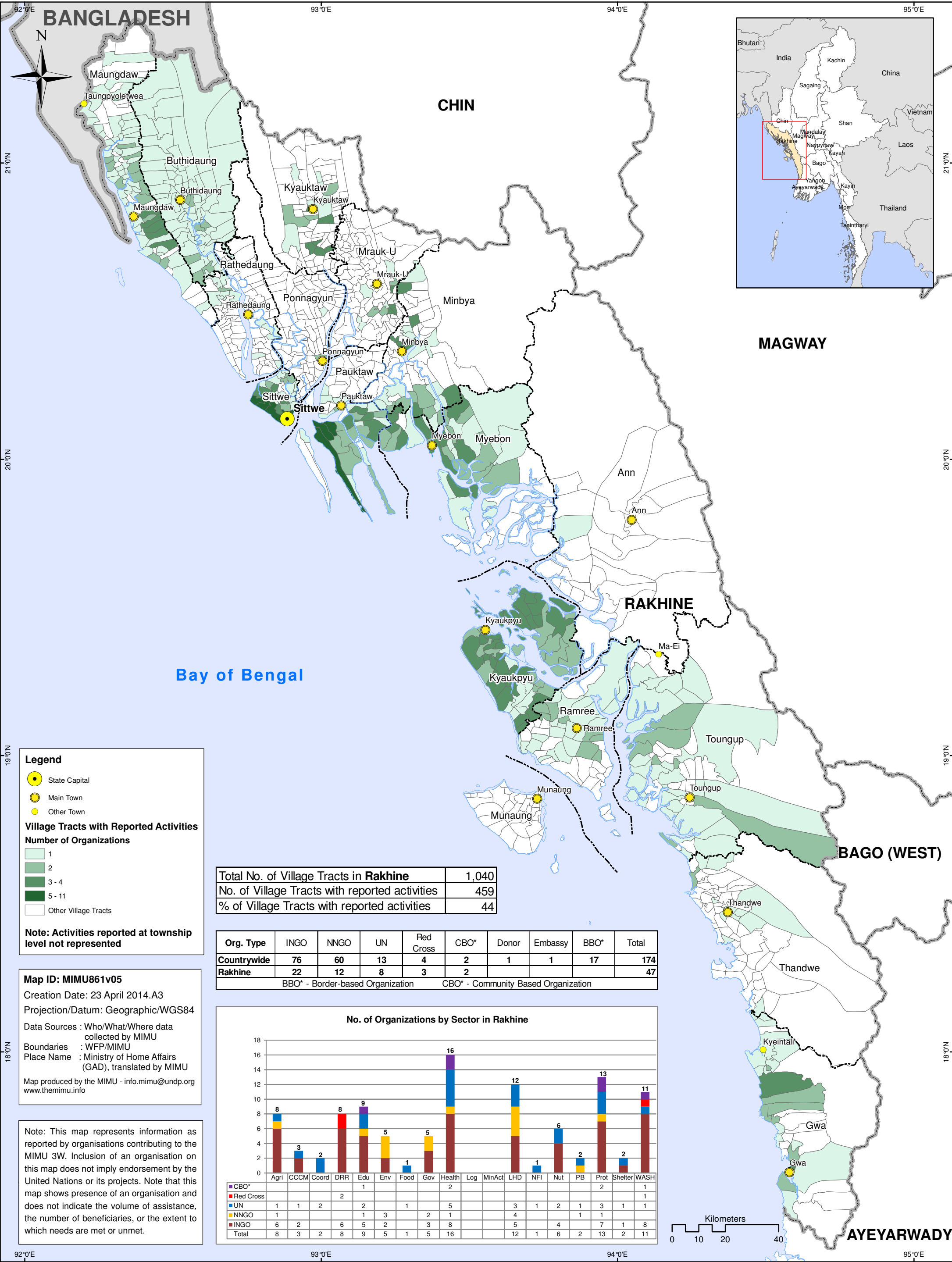
**No. of Organization by Township in Rakhine**



RAKHINE STATE

All Projects Under Implementation (Village Tract Level)

March 28, 2014





**RAKHINE STATE - Organisation Presence at Township Level by Sector**  
**Projects Under Implementation**  
**March 28, 2014**

Township	Township pCode	Agriculture	CCCM	Coordination	Disaster Risk Reduction	Education	Environment	Food	Governance	Health	Logistics	Mine Action	Non-agricultural livelihoods/ Infrastructure	Non-Food Items	Nutrition	Peace Building/ Conflict Prevention	Protection	Shelter	WASH	Count of Orgs.
Ann	MMR012014					UNICEF				UNICEF, UNFPA, WHO										3
Buthidaung	MMR012010	ACF				UNICEF, WFP		WFP		Malteser, UNICEF, WHO, WFP			ACF		ACF, WFP	UNHCR	Tdh-L		ACF	7
Gwa	MMR012017				ACTED	BAJ	DCA, MERN, WCS		COM	PSI, UNICEF, WHO										9
Kyaukpyu	MMR012011	IRC, OXFAM			PLAN		MSN	WFP	NPA	PSI, UNICEF, WHO			OXFAM	UNHCR	SCI		OXFAM, SCI, UNHCR, Tdh-L	UNHCR	OXFAM	12
Kyauktaw	MMR012004	FAO						WFP	GDI	MSF-CH, UNICEF, WHO			KBC (Kayin), UNDP	UNHCR	UNICEF, WFP		UNHCR, GDI	UNHCR	OXFAM, UNICEF	11
Maungdaw	MMR012009	ACF, CARE			CARE	CARE, UNICEF, WFP		WFP		Malteser, UNICEF, UNHCR, UNFPA, WHO, WFP			ACF, CARE, UNDP		ACF, CARE, Malteser, WFP	UNHCR	UNICEF		ACF, CARE, Malteser	9
Minbya	MMR012005	FAO, IRC, SCI			MRCS & IFRC	STM		WFP		IRC, UNICEF, WHO			SCI, STM, UNDP, UNHCR	UNHCR	WFP		UNHCR, Tdh-L	UNHCR	UNICEF	11
Mrauk-U	MMR012003	FAO				ABCD		WFP	SCI	ABCD, UNICEF, UNFPA, WHO			RMO, UNDP, UNHCR	UNHCR			ABCD, UNHCR, Tdh-L	UNHCR	ABCD, UNICEF	11
Munaung	MMR012012									UNICEF										1
Myebon	MMR012006	IRC, SCI	UNHCR		MRCS & IFRC	UNICEF	MERN, SVS	WFP	SCI	MMA, RI, UNICEF, UNFPA, WHO			MHDO, SCI, STM	UNHCR	SCI, UNICEF, WFP		RI, UNICEF, UNHCR, Tdh-L	UNHCR	RI	15
Not Specified		RTA		UNFPA					NPA	UNFPA							NPA			3
Pauktaw	MMR012007	DRC, FAO, IRC, SCI	UNHCR		OXFAM	SCI	MERN	WFP		UNICEF, UNFPA, WHO			MHDO, SCI, UNDP, UNHCR	UNHCR	SCI, UNICEF, WFP		DRC, SCI, UNHCR	DRC, UNHCR	DRC, SCI, Solidarites, UNICEF	14
Ponnagyun	MMR012002	IRC							GDI	UNICEF, WHO							Tdh-L, GDI			6
Ramree	MMR012013		UNHCR					WFP	AAM	UNICEF, WHO				UNHCR			SCI, UNHCR	UNHCR		6
Rathedaung	MMR012008				OXFAM	BAJ, UNICEF, WFP	MERN	WFP		IRC, UNICEF, UNFPA, WHO					WFP	UNHCR			Solidarites, UNICEF	10
Sittwe	MMR012001	FAO	DRC, LWF, UNHCR	UNOCHA	ACF, LWF, OXFAM	BAJ, LWF, SCI, UNICEF	MERN	WFP	SCI, GDI	ACF, AFXB, IRC, Malteser, MERCY, PSI, UNICEF, UNFPA, UA, WHO			AFXB, UNICEF, UNDP, UNHCR	UNHCR	ACF, SCI, UNICEF, WFP		DRC, LWF, SCI, UNICEF, UNHCR, UNFPA, UA, Tdh-L, GDI	UNHCR	ACF, DRC, Malteser, MRCS, OXFAM, SCI, Solidarites, UNICEF	26
Thandwe	MMR012015				FRC & CRC	BAJ, UNICEF				PSI, UNICEF, UNFPA, WHO				UNHCR			UNICEF			7
Toungup	MMR012016				PLAN	BAJ, PLAN, UNICEF			SCI	PSI, UNICEF, UNFPA, WHO							SCI			7

## RAKHINE - Summary of Organizations' Sub Sectors Interventions Development Projects Under Implementation as of March 28, 2014

Sector_Cluster	Sub Sector	No. of Projects	No. of Organizations	No. of Townships	No. of Village Tracts/ Towns	No. of Villages/ Wards
Agriculture	Agricultural Extension	3	3	3	19	22
	Agricultural Inputs	2	1	1	18	46
	Agriculture Development	2	2	6	118	246
	Agriculture Water Resources	2	1	1	18	46
	Capacity Building (Agricultural Livelihood)	3	3	4	20	38
	Fisheries	3	3	4	18	22
	Forestry	2	1	1	18	46
	Livestock and poultry	2	2	2	12	28
	Plant Production	1	1	1	12	18
	Provision of paddy plantation & cultivation	2	2	3	11	1
<b>Sector Total (AGRICULTURE)</b>		<b>8</b>	<b>6</b>	<b>7</b>	<b>135</b>	<b>268</b>
Coordination	Information Management	1	1			
<b>Sector Total (Coordination)</b>		<b>1</b>	<b>1</b>			
Disaster Risk Reduction	Community based Disaster Preparedness and Risk Reduction	6	6	10	97	162
	Hazard, vulnerability and risk assessment	2	2	4	16	19
	Multi - hazard Early Warning Systems	1	1	1	10	29
	Policy and Institutional development	1	1	3	5	4
	Preparedness and Response Programs	4	4	4	19	39
	Public Awareness, Education and Training	2	2	4	15	34
<b>Sector Total (DRR)</b>		<b>8</b>	<b>7</b>	<b>10</b>	<b>97</b>	<b>162</b>
Education	Early Childhood Development	3	3	5	7	8
	Food for Education	1	1	3		
	Non-Formal Education	3	2	5		
	Quality Basic Education/Formal Education	3	3	8	17	33
<b>Sector Total (EDUCATION)</b>		<b>10</b>	<b>7</b>	<b>11</b>	<b>24</b>	<b>41</b>
Environment		7	5	6	44	88
<b>Sector Total (Environment)</b>		<b>7</b>	<b>5</b>	<b>6</b>	<b>44</b>	<b>88</b>
Food	Food For Work	1	1	1		
	General Food Distribution	1	1	3		
<b>Sector Total (FOOD)</b>		<b>2</b>	<b>1</b>	<b>3</b>	<b>0</b>	<b>0</b>

# **RAKHINE - Summary of Organizations' Sub Sectors Interventions** **Development Projects Under Implementation as of March 28, 2014**

Sector_Cluster	Sub Sector	No. of Projects	No. of Organizations	No. of Townships	No. of Village Tracts/ Towns	No. of Villages/ Wards
Governance	Access to Justice	2	2	1	3	3
	Economic and Development policy/planning	1	1	1		
	Elections	1	1	1	1	
	Human Rights Promotion and Advocacy	4	3	2	18	30
	Rule of Law	1	1			
	Strengthening civil society	4	3	5	7	6
<b>Sector Total (GOVERNANCE)</b>		<b>11</b>	<b>4</b>	<b>7</b>	<b>24</b>	<b>36</b>
Health	Basic Health Care	2	2	2	17	
	Control of Communicable Diseases	2	2	3		
	Coordination	1	1	1		
	Disease surveillance	1	1	1		
	Health Education	2	2	3		
	HIV/AIDS Programme	7	6	8		
	Malaria Programme	4	4	16	16	
	Reproductive Health Care	5	4	11	17	
	Revitalization of existing HS - HR	2	2	2		
	Revitalization of existing HS- Equipment&Supplies	2	2	2		
	TB Programme	4	4	5	139	
	Women and Child Health	1	1	17		
<b>Sector Total (HEALTH)</b>		<b>33</b>	<b>12</b>	<b>17</b>	<b>**140</b>	<b>**0</b>
Non-Agricultural Livelihoods/ Infrastructure	Cash For Work	5	5	8	50	81
	Income Generation	5	5	9	40	66
	Micro-Finance	2	2	4	13	18
	Rehabilitation-Community Infrastructure & Facility	3	2	6	10	
	Social Recovery	5	5	6	37	77
	Vocational Training	4	4	8	34	53
<b>Sector Total (NON-AGRICULTURAL LIVELIHOODS/INFRASTRUCTURE)</b>		<b>16</b>	<b>11</b>	<b>9</b>	<b>82</b>	<b>134</b>

**\*\* NOTE: This 3W round has seen under reporting of Health Activities at Village Tract and Village Level in Rakhine.**



## RAKHINE - Summary of Organizations' Sub Sectors Interventions Development Projects Under Implementation as of March 28, 2014

Sector_Cluster	Sub Sector	No. of Projects	No. of Organizations	No. of Townships	No. of Village Tracts/ Towns	No. of Villages/ Wards
Nutrition	Infant and young child feeding	2	2	1	8	21
	Inpatient Therapeutic Programme (ITP)	2	2	3	2	
	Nutrition Survey	1	1	3	16	19
	Nutritional Surveillance	1	1	1		
	Outpatient Therapeutic Programme (OTP)	2	2	6	11	
	Supplementary Feeding	3	3	8	27	
<b>Sector Total (NUTRITION)</b>		<b>9</b>	<b>6</b>	<b>9</b>	<b>48</b>	<b>40</b>
Peace Building/	Conflict transformation and Peacebuilding	2	2	6	3	
<b>Sector Total (PEACE BUILDING/CONFLICT PREVENTION)</b>		<b>2</b>	<b>2</b>	<b>6</b>	<b>3</b>	
Protection	Awareness Raising on Protection Issues	1	1	8		
	Child Protection	6	4	8	79	155
	Child Protection in Emergencies	1	1	1	1	2
	Family Tracing	1	1	7		
	Gender Based Violence	3	2	8		
	Promoting Gender Equality and Empowerment of Women	4	3	4	20	55
	Protection Assessment	1	1	8		
	Vulnerable Populations in Emergencies	3	2	8	4	5
<b>Sector Total (PROTECTION)</b>		<b>20</b>	<b>11</b>	<b>13</b>	<b>94</b>	<b>203</b>
Shelter	Shelter Assessment	1	1	8		
	Shelter Coordination	1	1	8		
	Shelter Support	1	1	1	2	3
<b>Sector Total (SHELTER)</b>		<b>2</b>	<b>2</b>	<b>8</b>	<b>2</b>	<b>3</b>
WASH	Assessment	1	1	1	17	25
	Construction & Rehabilitation -Sanitation Facility	2	2	2	10	
	Construction & Rehabilitation -Water Facility	3	3	3	10	
	Environmental Sanitation	1	1	1		
	Hygiene Promotion	3	3	3	19	23
	Safe Water Supply	2	2	2	18	21
<b>Sector Total (WASH)</b>		<b>8</b>	<b>5</b>	<b>5</b>	<b>36</b>	<b>48</b>
<b>Grand Total (All Sectors)</b>		<b>125 (18%)</b>	<b>40 (23%)</b>	<b>17 (100%)</b>	<b>428 (41%)</b>	<b>676 (17%)</b>