

Overview of the October 2014 3W for SOUTH EAST of Myanmar

Bago (East), Kayah, Kayin, Mon, Shan (East), Shan (South) and Tanintharyi

The MIMU 3W gathers inputs from participating agencies on Who is doing What, Where across Myanmar. It is currently conducted every 6 months.

189 agencies participated in the October 2014 3W, providing information on their activities in 19 sectors and 142 sub-sectors which have been defined by technical/sector working groups. There is still likely to be under-reporting of the specific activities of field-based local NGOs and CBOs.

This overview of the 3W results in the South East of Myanmar (SE) covers activities reported in Bago (East), Kayah, Kayin, Mon, Shan (East), Shan (South) and Tanintharyi.

The following tables and chart describe projects under implementation as of November 3, 2014. Further information on planned and recently completed projects is available from the 3W dataset, published on the MIMU website and through the MIMU 3W Dashboard which shows agencies' activities to Township level.

The South East of Myanmar comprises 84 Townships, 2,471 Village tracts and 16,608 Villages (as per the MIMU Place Codes). GPS coordinates have been obtained for 61% of these villages in the SE (10,109 villages) through agencies' active support to the MIMU Place Code initiative. Efforts continue to confirm GPS coordinates for the remaining 6,499 villages. Chaungzon, Thanbyuzayat, Mudon and Ye Townships have the best rates of village mapping (availability of GPS coordinates), while Shwegyin, Hpapun and Kyunsu Townships have the lowest level of mapped villages.

Agencies were found to be active in all 84 of townships throughout the South East and the activities coverage at Village Tract level is 71% (1,760 village tract) and at Village level is 31% (5,585 villages).

1. Active Organizations

A total of 126 organizations reported projects under implementation across the South East (SE). The majority are NGOs (109 agencies, 25 of whom are border-based – namely 20 CBOs, 3 NNGOs and 2 INGOs). In terms of project spread, Kayin had the highest concentration of agencies (64), followed by Mon (56 agencies), Kayah (52), Tanintharyi (49), Shan South (47), Bago East (42). The lowest reported concentration is in Shan East (17 agencies).

Org. Type	INGO	NNGO	UN	Red Cross	CBO*	Donor	Embassy	BBO*	Total
Countrywide	82	60	14	4	2	1	1	25	189
South East	57	27	11	4	1	1	0	25	126
BBO* - Border-based Organization					CBO* - Community Based Organization				

2. Projects by Sector

362 projects were reported across the SE in 17 sectors, making up 50% of the total projects reported to the 3W. No organization reported activities in the CCCM and Logistics sectors.

- Health is the most widespread intervention among agencies in the SE** with 47 agencies (38 of them NGOs and 4 Red Cross agencies) reportedly implementing some form of health activity through 122 projects in 3,351 villages across 1,290 village tracts in 83 townships. The majority are Malaria Programme activities (2,450 villages), followed by Reproductive Health Care (1,024 villages), Women and Child Health (705 villages), TB Programme (671) and Control of Communicable Diseases (636). Health activities are found in all the states/regions but most concentrated in Kayin and Mon. The Health sector has a higher number of UN agencies than in other sectors of activity.

Overview of the October 2014 3W for SOUTH EAST of Myanmar

Bago (East), Kayah, Kayin, Mon, Shan (East), Shan (South) and Tanintharyi

- **Protection is the second most commonly reported sector** with activities under implementation by 49 agencies in 1,506 villages in 706 village tracts across 60 townships. These consist mainly of activities around Civil Documentation (1,049 villages), but also activities focused on Child Protection (178 villages) and Promoting Gender Equality and Empowerment of Women (173 villages). Protection assessments were reportedly being conducted in 206 village tracts throughout the South East. Protection agencies were found to be widespread in all states and regions except in Shan (East) where there were few agencies reporting activities. Most of the activities are implemented by NGOs/CBOs (46 agencies). Border-based agencies tend to be more active in the Protection sector than in other sectors of activity in the SE with 21 BBOs reporting protection projects under implementation.
- **Non-Agricultural Livelihoods and Infrastructure is the third main sector** with 22 agencies implementing 35 projects reaching 1,089 villages in 47 townships (354 village tracts). These are mainly Microfinance interventions (808 villages), followed by Income Generation activities (276 villages), Social Recovery (207), Vocational Education and Training (203) and Cash-for-work interventions (127). Non-Agricultural Livelihood activities are most numerous in Kayin, Mon and Kayah, and least in Shan East.

Other sectors in order of spread of activities are:

- **Education** - under implementation in 960 villages in 527 village tracts by 23 organizations (19 of them NGOs), most frequently Early Childhood Development / ECD (748 villages), followed by support to the Quality Basic Education (146) and Non-Formal Education / NFE support (96). Food for Education activities were reported in 29 village tracts, however village level data was not reported. Agency activities were found to be more concentrated in Kayin, followed by Kayah, Mon and Tanintharyi.
- **Agriculture** – 20 organizations reported activities in 731 villages in 45 townships, the main subsectors being Agricultural Inputs (464 villages), Capacity Building (111), Agriculture Development (89), Agriculture Extension (80) and Agricultural Alternative Development (73).
- **Governance** activities are reported by 20 agencies reaching 351 villages, mostly focused on Strengthening Civil Society (200 villages) and Institutional Strengthening and Public Administration Reform (119 villages).
- **WASH** - 17 organizations in 293 villages, most frequently focused in Construction/Rehabilitation of Water Facilities (143), Sanitation Facilities (121), Safe Water Supply (104) and Hygiene Promotion (66).
- **Disaster Risk Reduction** / DRR activities are reported by 9 agencies in 160 villages in 115 village tracts across 17 townships, mostly focused on Community-based Disaster Preparedness and Risk Reduction (124 villages) and Public Awareness, Education and Training (36 villages).
- **Mine Action** activities are reported by 12 agencies in 137 villages across 88 village tracts (26 townships). These are mainly in Mine Risk Education (129 villages).
- **Peacebuilding/Conflict Prevention** activities were reported by 10 agencies reaching 76 villages with activities in Conflict Transformation and Peacebuilding (40 villages), Civil Administration (23) and Support for Durable Solutions for Returnees (13).
- **Non-Food Items** activities mainly focusing on NFI distribution are reported by 1 agency reaching 55 villages in 2 townships.
- **Environment** activities are reported by 10 agencies, reaching 53 villages in 11 townships.
- **Nutrition** activities are reported by 3 agencies reaching 37 villages, mostly in Supplementary Feeding (21 villages) and Infant and Young Child Feeding (16).
- **Food** activities are reported by 13 agencies reaching 57 village tracts in 26 townships, all related to General Food Distribution (29 villages but likely with under-reporting).
- **Shelter activities** (Permanent Shelter activities) were reported in 1 township by 1 agency (1 village).
- **Private Sector Development activities** – a new addition in this 3W round to capture emerging work in this sector - have been reported by 2 agencies, reaching 6 townships. Being new, these activities are very likely under-reported in this round.

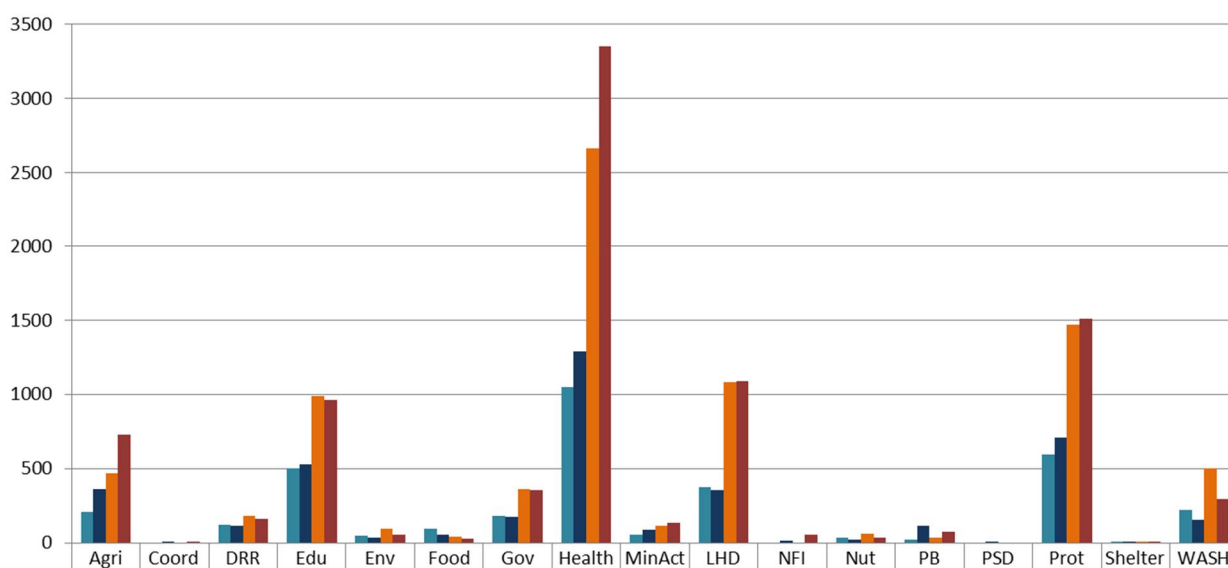
Overview of the October 2014 3W for SOUTH EAST of Myanmar

Bago (East), Kayah, Kayin, Mon, Shan (East), Shan (South) and Tanintharyi

Summary Reports by Sector in SOUTH EAST of Myanmar with Projects Under Implementation as of Nov. 3, 14.

Sector	No. of Projects	No. of Organizations	No. of Townships	No. of Village Tract/ Town	No. of Village/Ward
Agriculture	26	20	45	363	731
Coordination	3	3	3	9	10
Disaster Risk Reduction	13	9	17	115	160
Education	46	23	83	527	960
Environment	12	10	11	31	53
Food	4	13	26	57	29
Governance	36	20	41	174	351
Health	122	47	83	1,290	3,351
Mine Action	13	12	26	88	137
Non-Agricultural Livelihoods/ Infrastructure	35	22	47	354	1,089
Non-Food Items	1	1	2	15	55
Nutrition	5	3	21	21	37
Peace Building/ Conflict Prevention	21	10	33	117	76
Private Sector Development	2	2	6	1	
Protection	55	49	60	706	1,506
Shelter	1	1	1	2	1
WASH	17	17	31	151	293
Grand Total (All Sectors)	362 (50%)	126 (67%)	84 (100%)	1,760 (71%)	5,585 (31%)
	(% of Total in Countrywide)		(% of Total in South East of Myanmar)		

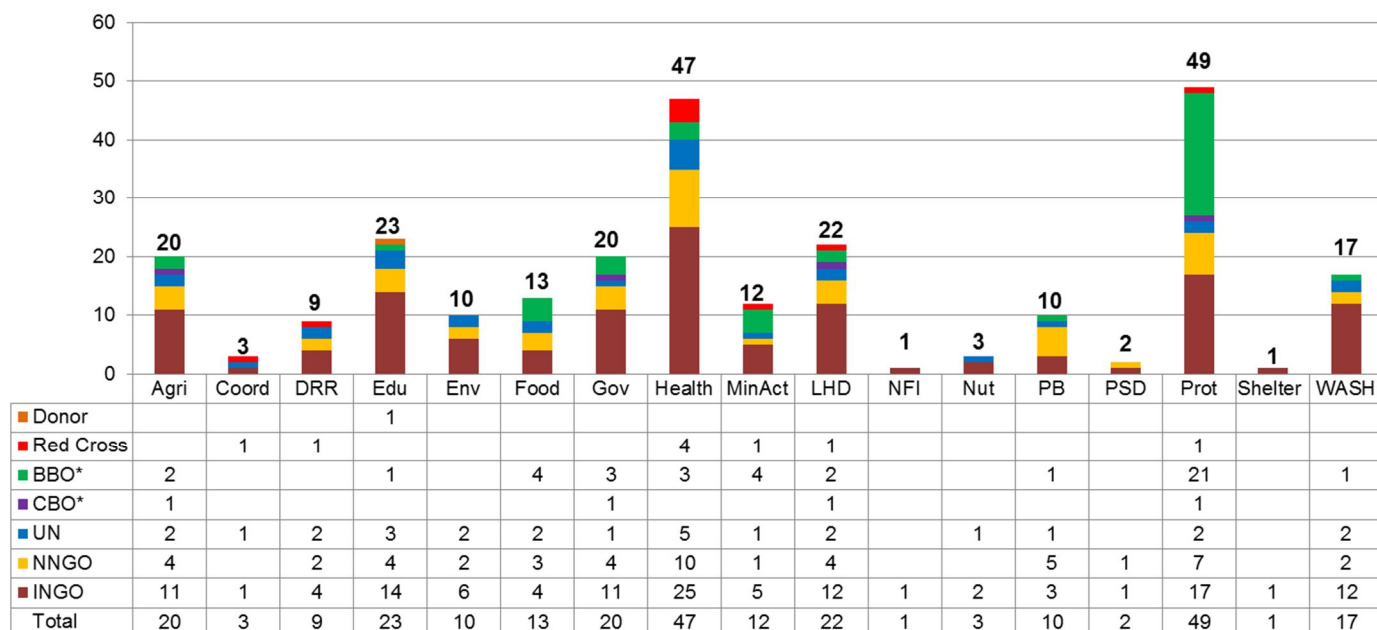
Reporting Status on the Village Tract (VT) / Village Level



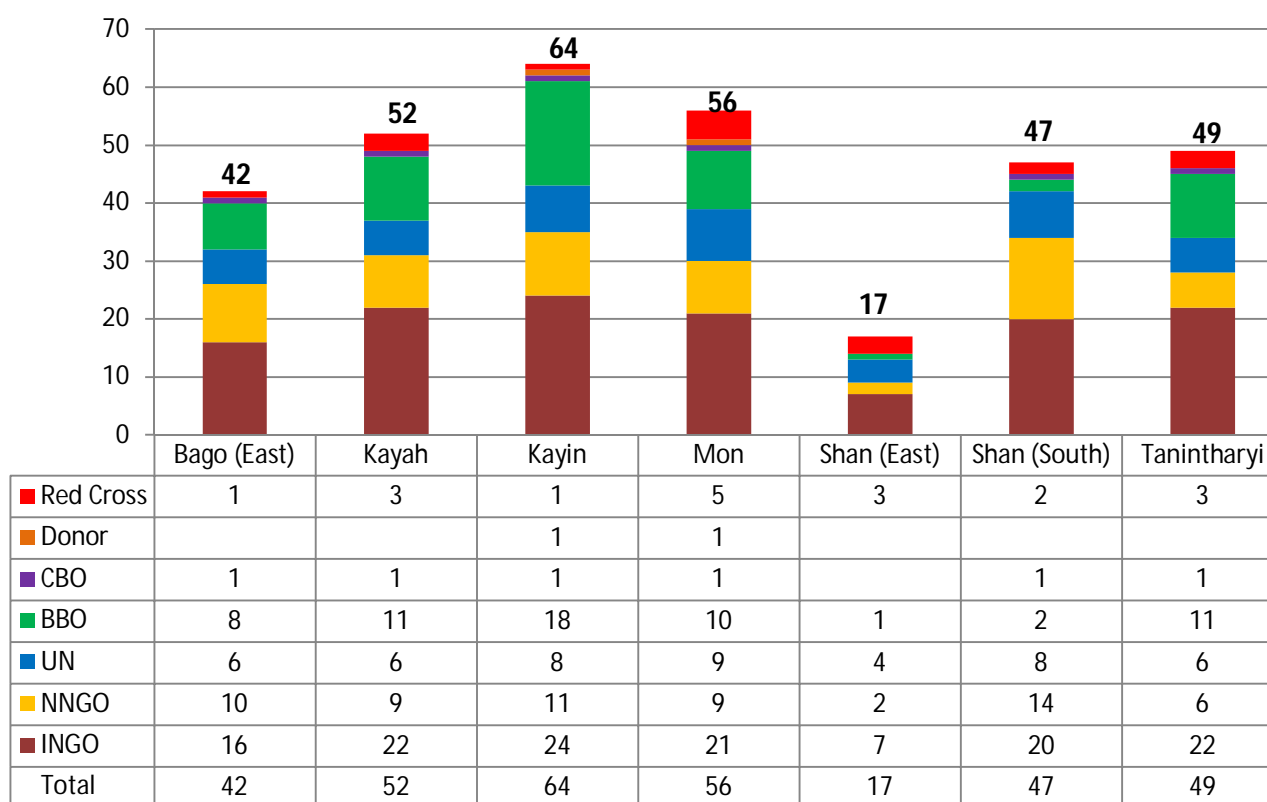
Overview of the October 2014 3W for SOUTH EAST of Myanmar

Bago (East), Kayah, Kayin, Mon, Shan (East), Shan (South) and Tanintharyi

No. of Organizations by Sector in South East of Myanmar



No. of Organizations by State/Region in South East of Myanmar



Overview of the October 2014 3W for SOUTH EAST of Myanmar

Bago (East), Kayah, Kayin, Mon, Shan (East), Shan (South) and Tanintharyi

No. of Organizations by Sector by Type of Organization (as of November 3, 2014)

Sector	INGO	NNGO	UN	CBO*	BBO*	Red Cross	Donor	Total
Agriculture	11	4	2	1	2			20
Coordination	1		1			1		3
DRR	4	2	2			1		9
Education	14	4	3		1		1	23
Environment	6	2	2					10
Food	4	3	2		4			13
Governance	11	4	1	1	3			20
Health	25	10	5		3	4		47
Mine Action	5	1	1		4	1		12
Non-Agricultural LH/ Infrastructure	12	4	2	1	2	1		22
Non-Food Items	1							1
Nutrition	2		1					3
Peace Building/ Conflict Prevention	3	5	1		1			10
Private Sector Development	1	1						2
Protection	17	7	2	1	21	1		49
Shelter	1							1
WASH	12	2	2		1			17

No. of Organizations by Sector and State/Region (as of November 3, 2014)

State/ Region	Agriculture	Coordination	Disaster Risk Reduction	Education	Environment	Food	Governance	Health	Mine Action	Non-agricultural livelihoods/ Infrastructure	Non-Food Items	Nutrition	Peace Building/ Conflict Prevention	Private Sector Development	Protection	Shelter	WASH	S/R Total
Bago (East)	5	1	3	5		5	5	16	4	4		1	3		9		2	42
Kayah	6	1		8	1	2	9	18	9	8	1	2	4	1	21		3	52
Kayin	5	1	4	13		6	11	26	6	11		1	5		16		9	64
Mon	6	2	4	8		5	10	23	3	8		2	3		18		5	56
Shan (East)	3	1	3	3	1	2	1	10		1			1		6			17
Shan (South)	7	2	1	6	5	3	7	16		5		1	5	1	16		1	47
Tanintharyi	1	1	1	8	4		10	16	2	5		1	2		19	1	5	49
Sector Total	20	3	9	23	10	13	20	47	12	22	1	3	10	2	49	1	17	

South East of Myanmar - Summary of Organizations' Sub Sectors Interventions Projects Under Implementation as of November 3, 2014

Sector	Sub Sector	No. of Projects	No. of Organizations	No. of Townships	No. of Village Tract/ Town	No. of Village/Ward
Agriculture	Agricultural Alternative Development	5	3	6	18	73
	Agricultural Extension	4	4	7	30	80
	Agricultural Inputs	9	8	33	290	464
	Agricultural Research	1	1	1	5	10
	Agriculture Development	6	6	10	34	89
	Agriculture Water Resources	1	1	1	1	1
	Agro-Industry	1	1	2	7	10
	Capacity Building (Agricultural Livelihood)	7	7	11	49	111
	Forestry	4	4	7	8	12
	Livestock and poultry	4	4	6	15	17
	Plant Production	4	4	14	13	27
	Provision of paddy plantation & cultivation	3	3	6	20	29
Sector Total (AGRICULTURE)		26	20	45	363	731
Coordination	General Coordination	1	1	2	9	10
	Information Management	1	1			
Sector Total (COORDINATION)		3	3	3	9	10
Disaster Risk Reduction	Community based Disaster Preparedness and Risk Reduction	7	7	10	95	124
	Hazard, vulnerability and risk assessment	2	1	3		
	Policy and institutional development	2	1	1		
	Preparedness and Response Programs	2	2	3	8	10
	Public Awareness, Education and Training	4	3	9	20	36
Sector Total (DISASTER RISK REDUCTION)		13	9	17	115	160
Education	Early Childhood Development	11	6	55	395	748
	Food for Education	1	1	7	29	
	Non-Formal Education	12	9	77	75	96
	Quality Basic Education/Formal Education	15	13	41	80	146
Sector Total (EDUCATION)		46	23	83	527	960
Sector Total (ENVIRONMENT)		12	10	11	31	53
Food	Food For Work	1	2	2	6	
	General Food Distribution	2	8	15	40	29
Sector Total (FOOD)		4	13	26	57	29

South East of Myanmar - Summary of Organizations' Sub Sectors Interventions Projects Under Implementation as of November 3, 2014

Sector	Sub Sector	No. of Projects	No. of Organizations	No. of Townships	No. of Village Tract/ Town	No. of Village/Ward
Governance	Access to Justice	4	4	4	6	5
	Economic and Development policy/planning	4	4	10	16	14
	Elections	1	1	6	6	
	Housing, Property and Land Reform	4	4	8	1	
	Human Rights Monitoring	2	2	24	2	
	Human Rights Promotion and Advocacy	6	6	28	19	16
	Institutional Strengthening and Public Administration Reform	2	2	5	20	119
	Media and flow of information	3	3	11		
	Monitoring & Reporting Mechanism on GCRV	2	2	17		
	Rule of Law	3	3	2	1	
	Strengthening civil society	17	13	38	126	200
	Transparency/Accountability	1	1	1	1	
Sector Total (GOVERNANCE)		36	20	41	174	351
Health	Basic Health Care	16	11	33	124	241
	Community Home Based Care	3	3	6	30	41
	Control of Communicable Diseases	3	4	46	444	636
	Disease surveillance	2	2	10		
	Harm Reduction	3	1	1		
	Health Assessment	1	1	1	1	1
	Health Education	8	7	16	175	245
	HIV/AIDS Programme	24	17	76	172	228
	Malaria Programme	20	16	79	1,015	2,450
	Mental Health and Psychosocial Support	1	1	1	6	8
	Reproductive Health Care	9	8	58	639	1,024
	Revitalization of existing HS - HR	2	2	9	43	47
	Revitalization of existing HS - Infrastructure	3	2	10	16	16
	Revitalization of existing HS- Equipment&Supplies	1	1	8		
	TB Programme	9	8	50	472	671
	Women and Child Health	21	13	56	169	705
Sector Total (HEALTH)		122	47	83	1,290	3,351

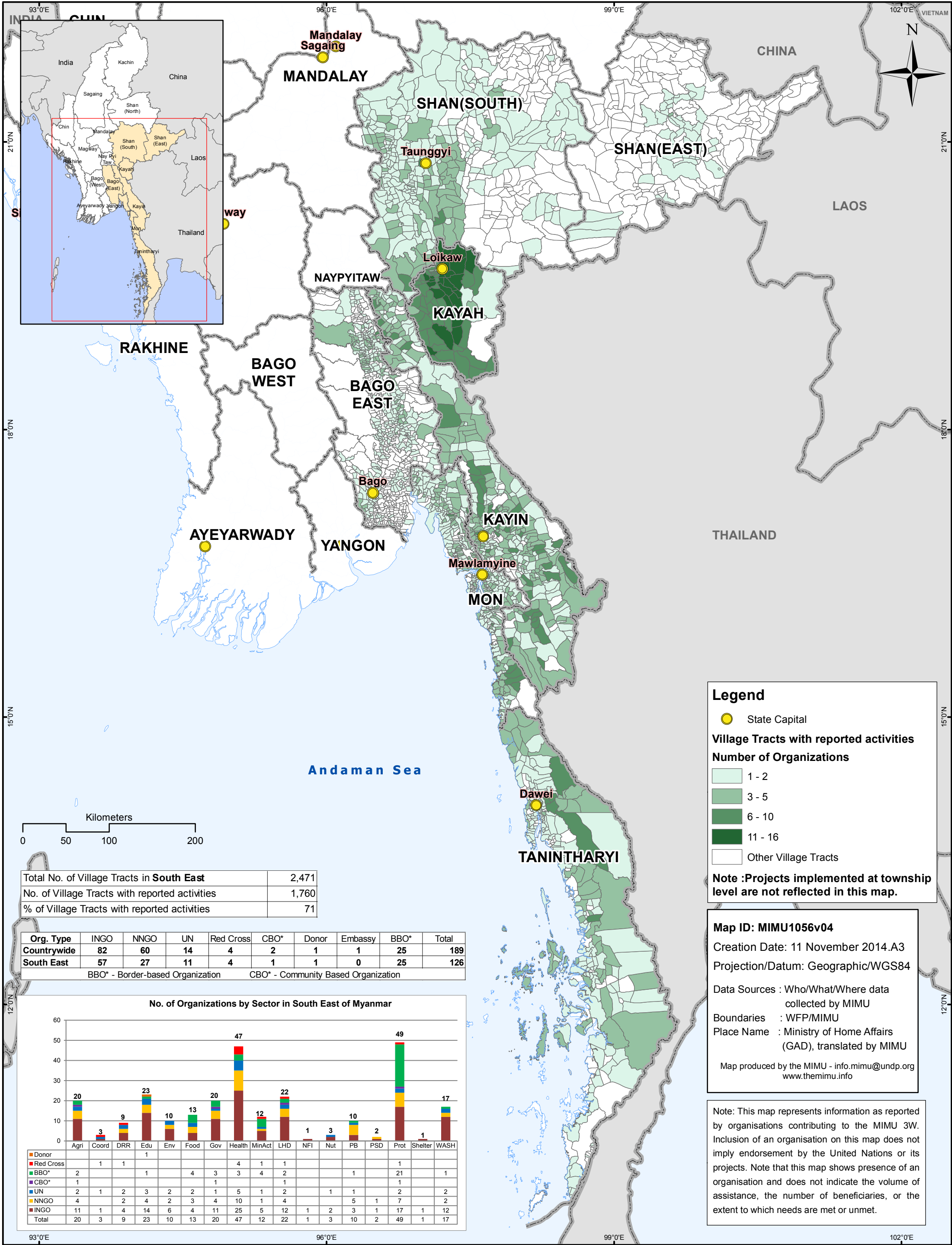
South East of Myanmar - Summary of Organizations' Sub Sectors Interventions Projects Under Implementation as of November 3, 2014

Sector	Sub Sector	No. of Projects	No. of Organizations	No. of Townships	No. of Village Tract/ Town	No. of Village/Ward
MineAction	Advocacy	1	2	5	16	27
	Mine-Risk Education	7	9	26	80	129
	Victim Assistance	5	5	5	9	8
Sector Total (MINE ACTION)		13	12	26	88	137
Non- Agricultural Livelihoods/ Infrastructure	Cash for work	1	1	9	72	127
	Income Generation	13	11	31	140	276
	Micro-Finance	6	9	20	194	808
	Rehabilitation-Community Infrastructure & Facility	6	6	12	15	12
	Social Recovery	8	5	27	125	207
	Vocational Education and Training	9	9	18	113	203
Sector Total (NON-AGRICULTURAL LIVELIHOODS/ INFRASTRUCTURE)		35	22	47	354	1,089
NonFoodItems	NFI Distribution	1	1	2	15	55
Sector Total (NON-FOOD ITEMS)		1	1	2	15	55
Nutrition	Infant and young child feeding	2	2	5	6	16
	Inpatient Therapeutic Programme (ITP)	1	1	7		
	Multiple Micronutrient Supplementation	1	1	14		
	Supplementary Feeding	1	1	3	15	21
Sector Total (NUTRITION)		5	3	21	21	37
Peace Building Conflict Prevention	Civil administration	1	1	2	5	23
	Conflict transformation and Peacebuilding	15	9	28	49	40
	Customs and border control	1	1	2		
	Demobilization of adult combatants	2	2	7	1	
	Rehabilitation of conflict-affected infrastructure	1	1	1	1	
	Support for durable solutions for returnees	3	2	11	85	13
Sector Total (PEACE BUILDING/ CONFLICT PREVENTION)		21	10	33	117	76
Private Sector Development	Access to finance and financial inclusion	1	1	1	1	
	Other private sector support	1	1	1	1	
	Public-Private partnerships	1	1	5		
	Skills Development	1	1	1	1	
	Small and Medium Enterprises Development	1	1	1	1	
Sector Total (PRIVATE SECTOR DEVELOPMENT)		2	2	6	1	

South East of Myanmar - Summary of Organizations' Sub Sectors Interventions Projects Under Implementation as of November 3, 2014

Sector	Sub Sector	No. of Projects	No. of Organizations	No. of Townships	No. of Village Tract/ Town	No. of Village/Ward
Protection	Awareness Raising on Protection Issues	8	9	32	34	56
	Child Protection	15	7	37	124	178
	Child Protection in Emergencies	1	1	1		
	Civil Documentation	1	1	29	394	1,049
	Community Based Protection (Groups)	3	3	3	10	15
	Durable Solution - IDP/Returnee Housing, Land and Property	2	2	3	1	
	Gender Based Violence	5	5	8	4	
	Human Trafficking	2	3	5	30	44
	Persons with Disabilities	2	2	5	42	70
	Promoting Gender Equality and Empowerment of Women	11	12	29	105	173
	Protection Assessment	1	16	23	206	
	Vulnerable Populations in Emergencies	1	1	4	8	7
Sector Total (PROTECTION)		55	49	60	706	1,506
Shelter	Permanent Shelter	1	1	1	2	1
Sector Total (SHELTER)		1	1	1	2	1
WASH	Assessment	1	1	3		
	Construction & Rehabilitation -Sanitation Facility	6	6	16	48	121
	Construction & Rehabilitation -Water Facility	8	7	23	92	143
	Environmental Sanitation	1	2	4	4	19
	Hygiene Promotion	7	8	13	52	66
	Safe Water Supply	6	6	23	69	104
Sector Total (WASH)		17	17	31	151	293
Grand Total (All Sectors)		362 (50%)	126 (67%)	84 (100%)	1,760 (71%)	5,585 (31%)
		(% of Total in Countrywide)		(% of Total in South East of Myanmar)		

SOUTH EAST REGION
All Projects Under Implementation (Village Tract Level)
November 3, 2014



State/ Region	Township	Township Pcode	Agriculture	CCCM	Coordinat ion	Disaster Risk Reduction	Education	Environment	Food	Governance	Health	Logis tics	Mine Action	Non-Agricultural Livelihoods/ Infrastructure	Non- Food Items	Nutrition	Peace Building/ Conflict Prevention	Private Sector Development	Protection	Shelter	WASH	Count of Orgs.
Bago (East)	Bago	MMR007001	FAO, IDE/Proximity				BIMM, KBC (Kayin), UNICEF, NotSpecifiedOrg			COM	IHA, MSI, MPG, MNMA, PSI, WHO			KBC (Kayin), BRAC		UNICEF	DCA		UNICEF, Tdh-L			16
Bago (East)	Daik-U	MMR007007	IDE/Proximity				BIMM, KBC (Kayin)				PSI, UNFPA, WHO			KBC (Kayin)					Tdh-L			7
Bago (East)	Htantabin	MMR007014	IDE/Proximity, SCI/FLD			CACH, KMSS	KBC (Kayin), UNICEF			KHRG, SCI/FLD	MNMA, PSI, WHO, MAM		UNHCR, DCA-CM (KTWG)	KBC (Kayin)					KHRG		NotSpecified Org	14
Bago (East)	Kawa	MMR007003	IDE/Proximity				KBC (Kayin)				PSI, WHO								Tdh-L			5
Bago (East)	Kyaukkyi	MMR007011	IDE/Proximity				KBC (Kayin), UNICEF		TBC (CIDKP)	KHRG	MHAA, MNMA, TBC (KWO), WHO		UNHCR, DCA-CM (CIDKP), DCA-CM (KTWG)	KBC (Kayin)			AYO, NPA		KHRG, TBC (CIDKP & KORD)		TBC (BPHWT), NotSpecified Org	17
Bago (East)	Kyauktaga	MMR007006	IDE/Proximity				BIMM, KBC (Kayin)				BIMM, PSI, UNICEF, WHO, MAM			DCA, KBC (Kayin)					Tdh-L		NotSpecified Org	10
Bago (East)	Not Specified		NotSpecifiedOrg		UNFPA	UN- Habitat				NPA	UNFPA		ICRC	NotSpecifiedOrg			NPA		NPA			5
Bago (East)	Nyaunglebin	MMR007005	IDE/Proximity				KBC (Kayin)			KHRG	BIMM, PSI, WHO, TBC (KDHW)		DCA-CM (KTWG)	DCA					KHRG, Tdh-L			10
Bago (East)	Oktwin	MMR007013	IDE/Proximity, SCI/FLD				KBC (Kayin), WV			SCI/FLD, WV	PSI, UNICEF, UNFPA, WHO, WV, MAM			DCA, KBC (Kayin)		UNICEF			SCI/FLD, TLMM, WV		NotSpecified Org	12
Bago (East)	Phyu	MMR007012	IDE/Proximity				KBC (Kayin)				PSI, WHO, MAM			DCA, KBC (Kayin)		UNICEF			Tdh-L		NotSpecified Org	9
Bago (East)	Shwegyin	MMR007008					KBC (Kayin), UNICEF		TBC (CIDKP)	KHRG	AFXB, BIMM, MHAA, MNMA, PSI, TBC (KWO), WHO		DCA-CM (CIDKP), DCA-CM (KTWG)	DCA, KBC (Kayin)			NPA		KHRG, Tdh-L, TBC (CIDKP & KORD)		NotSpecified Org	18
Bago (East)	Taungoo	MMR007009	AAM, IDE/Proximity, SCI/FLD			UN- Habitat	BIMM, KBC (Kayin)		AAM	KHRG, SCI/FLD	MPG, PSI, RDS, UNICEF, UNFPA, WHO, MAM		DCA-CM (KTWG)	DCA, KBC (Kayin)		UNICEF	DCA, NPA		KHRG, NYWCA, SCI/FLD, TLMM, Tdh-L		TBC (BPHWT), NotSpecified Org	22
Bago (East)	Thanatpin	MMR007002									MHAA, PSI, WHO			DCA, BRAC								5
Bago (East)	Waw	MMR007004	IDE/Proximity				BIMM				PSI, UNICEF, UNFPA, WHO								Tdh-L			7
Bago (East)	Yedashe	MMR007010	IDE/Proximity				KBC (Kayin)				PSI, UNICEF, UNFPA, WHO, MAM					UNICEF			Tdh-L			8
Kayah	Bawlakhe	MMR002005	PACT				KBC (Kayin), UNICEF			PACT, NotSpecifiedOrg	IRC, IOM, PACT, UNICEF, WHO, CPI		MC, DCA-CM (KnSWDC)				TBC (KnWO), NotSpecified Org		NRC, NotSpecifiedOrg, TBC (KnWO & KEG), TBC (KSWDC), TBC (KSWDC & KEG), TBC (KSWDC & KnWO & KEG)		PACT	17
Kayah	Demoso	MMR002002	ACF, DRC, TBC (KnE)				CARE, KBC (Kayin), NRC, PCF, UNICEF		TBC (KnSWDC)	AAM, COM, SCI/FLD	ACF, CARE, BIMM, IRC, IOM, IFRC, KBC (Kayin), MNMA, PSI, UNICEF, WHO, WV, CPI		DRC, MC, UNHCR, MAG, DCA-CM (KnSWDC)	DRC, UNDP, UNHCR	ACF	ACF	STH, TBC (KnWO), NotSpecified Org		CARE, DRC, NRC, SCI/FLD, TBC (KnWO), Thingaha, UNHCR, TBC (KLHRC), TBC (KSWDC)		ACF	32
Kayah	Hpasawng	MMR002006	DRC, PACT, TBC (KnE)				KBC (Kayin), UNICEF			PACT	IRC, IOM, PACT, UNICEF, WHO, MAM, CPI		DRC, MC, DCA-CM (KnSWDC)	DRC			NPA, TBC (KnWO), NotSpecifiedOrg		DRC, NRC, TBC (KLHRC), TBC (KSWDC & KEG)		PACT	18
Kayah	Hpruso	MMR002003	ACF, TBC (KnE)				KBC (Kayin), PCF, UNICEF		TBC (KnSWDC)	AAM, SCI/FLD	BIMM, IRC, IOM, KBC (Kayin), MHAA, MNMA, UNICEF, WHO, MAM, CPI		MC, DCA-CM (KnSWDC)	UNDP	ACF		NPA, STH, TBC (KnWO), NotSpecifiedOrg		NRC, SCI/FLD, TBC (KnWO), CFM, TBC (KLHRC), TBC (KSWDC)		ACF	27
Kayah	Loikaw	MMR002001	DRC, TBC (KnE), NotSpecifiedOrg				KBC (Kayin), UNICEF, WV, WEI, NotSpecifiedOrg	NotSpecifiedOrg		SCI/FLD, UNDP, GDI, NotSpecifiedOrg	IRC, IOM, IFRC, KBC (Kayin), MERLIN, MNMA, PSI, WHO, WV, CPI		MAG, WEI, DCA-CM (KnSWDC), NotSpecifiedOrg	ACTED, DRC, SCI/FLD, WV, NotSpecifiedOrg		UNICEF	NPA, STH, TBC (KnWO), NotSpecifiedOrg	NotSpecifiedOrg	DRC, MRCS, NRC, SCI/FLD, TBC (KnWO), UNICEF, WV, Tdh-L, NotSpecifiedOrg, TBC (KSWDC)		IRC	29
Kayah	Mese	MMR002007					KBC (Kayin), UNICEF		TBC (KnSWDC)		IRC, IOM, MERLIN, WHO		DCA-CM (CIDKP), DCA-CM (KnSWDC)				TBC (KnWO), NotSpecified Org		NRC, TBC (KSWDC & KEG), TBC (KSWDC & KnWO)			14
Kayah	Not Specified		NotSpecifiedOrg		UNFPA					NPA			ICRC	NotSpecifiedOrg			NPA		NPA, NotSpecifiedOrg			4
Kayah	Shadow	MMR002004	DRC, TBC (KnE)				KBC (Kayin), UNICEF			NotSpecifiedOrg	IRC, IOM, KBC (Kayin), MERLIN, TBC (KnWO), WHO, CPI		MAG, DCA-CM (KnSWDC)	DRC			NPA, TBC (KnWO), NotSpecified Org		DRC, NRC, TBC (KSWDC)		IRC	17
Kayin	Hlaingbwe	MMR003002	IDE/Proximity			IOM, Malteser	ADRA, KBC (Kayin), Malteser, NRC, SVS, UNICEF, UNHCR		TBC (KORD)	AAM, KHRG, SCI, SCI/FLD, NotSpecifiedOrg	IRC, Malteser, MHAA, PSI, SCI, TBC (KWO), UNICEF, UNHCR, WHO, WV, MalariaCons, TBC (KDHW), CPI		AAR, DCA-CM (CIDKP), DCA-CM (KTWG), NotSpecifiedOrg	CDA, DCA, UNDP, WV		UNICEF	DCA, NPA		KHRG, NRC, SCI, SCI/FLD, TBC (KORD & KWO)		Malteser, PWJ, SVS, UNHCR, NotSpecified Org	34
Kayin	Hpa-An	MMR003001	HAI, IDE/Proximity			HAI, IOM, Malteser, UN- Habitat	KBC (Kayin), Malteser, NRC, SCI, UNICEF, UNHCR, WV, NotSpecifiedOrg		TBC (KORD)	AAM, COM, IRC, KHRG, SCI, SCI/FLD, UNDP, NotSpecifiedOrg	BIMM, HAI, ICRC, IRC, Malteser, MHAA, MPG, MNMA, PSI, SCI, TBC (KWO), UNICEF, WHO, WV, EMW, MalariaCons, TBC (KDHW)		DCA-CM (CIDKP), DCA-CM (KTWG)	ADRA, CDA, DCA, HAI, UNDP, WV, TBC (KED)		UNICEF	DCA, IOM		KHRG, MSI, NRC, SCI/FLD, UNICEF, UNHCR, WV		Malteser, UNHCR, TBC (BPHWT)	39
Kayin	Hpapun	MMR003003	HAI, IDE/Proximity			HAI	HAI, KBC (Kayin), UNICEF		TBC (KORD)	AAM, IRC, KHRG, SCI/FLD	CDA, HAI, MHAA, TBC (KWO), UNICEF, MAM, TBC (KDHW), CPI		DCA-CM (CIDKP), DCA-CM (KTWG)	DCA, KBC (Kayin)					HAI, KHRG, NRC, SCI/FLD, TBC (KORD & KWO)		HAI, TBC (BPHWT)	21
Kayin	Kawkareik	MMR003006	HAI, MHDO			HAI, IOM	HAI, KBC (Kayin), NRC, SDC, UNICEF, UNHCR		TBC (CIDKP)	AAM, KHRG, SCI, SCI/FLD	HAI, KBC (Kayin), MHAA, MNMA, PSI, SCI, TBC (KWO), UNICEF, UNHCR, WHO, MAM, PU-AMI, URC, MalariaCons, TBC (KDHW), CPI		DCA-CM (CIDKP), DCA-CM (KTWG)	DCA, KBC (Kayin), UNDP		UNICEF	IOM, NPA		HAI, KHRG, NRC, SCI, SCI/FLD, TBC (CIDKP & KHRG)		HAI, SVS, UNICEF, TBC (BPHWT)	32
Kayin	Kyainseikgyi	MMR003007					KBC (Kayin), SVS, SDC, UNICEF		TBC (KORD)	AAM, KHRG, SCI/FLD, HURFOM, NotSpecifiedOrg	MNMA, TBC (KWO), UNICEF, MAM, URC, CPI		DCA-CM (CIDKP), DCA-CM (KTWG)	DCA, KBC (Kayin), SCI/FLD, TBC (MRDC)		UNICEF	DCA		KHRG, NRC, SCI/FLD, TBC (CIDKP & KHRG & KESAN, TBC (HURFOM & MRDC)		CWS, SVS, UNHCR	24
Kayin	Myawaddy	MMR003005					KBC (Kayin), UNICEF, SIS		TBC (CIDKP), WFP	AAM, KHRG	IOM, MHAA, MNMA, PSI, SCI, TBC (KWO), UNICEF, WHO, MalariaCons, CPI		DCA-CM (KTWG)	KBC (Kayin)			IOM, NPA		KHRG, NRC, UNICEF, TBC (CIDKP & KHRG)		TBC (BPHWT)	21
Kayin	Not Specified		NotSpecifiedOrg		UNFPA					DCA, NPA			ICRC	DCA, NotSpecifiedOrg			NPA		NPA, NotSpecifiedOrg			5
Kayin	Thandaunggyi	MMR003004	DM, HAI, IDE/Proximity			HAI	HAI, KBC (Kayin), UNICEF, UNHCR		TBC (KORD)	AAM, KHRG, SCI/FLD	BIMM, DM, HAI, PSI, TBC (KWO), UNICEF, UNHCR, WHO, MAM, CPI		UNHCR, DCA-CM (KTWG)	DCA, HAI, KBC (Kayin), SCI/FLD			DCA, DM, GDI		HAI, KHRG, NRC, SCI/FLD, UNICEF, TBC (KESAN & KORD)		HAI, UNICEF, UNHCR, NotSpecifiedOrg	22
Mon	Bilin	MMR011010	FAO, IDE/Proximity, WC			IOM, WC	KBC (Kayin), UNICEF, UNHCR		TBC (KORD), WFP	KHRG	IOM, MPG, PSI, TBC (KWO), UNICEF, UNHCR, WHO, WC		DCA-CM (CIDKP), DCA-CM (KTWG)	WC		WC			KHRG, NRC		UNHCR, WC	17
Mon	Chaungzon	MMR011003			NotSpecifiedOrg		KBC (Kayin), UNICEF			SCI, HURFOM	PSI, UNICEF, WHO, TBC (KDHW)			UNDP					Lanthit, TLMM			11
Mon	Kyaikmaraw	MMR011002	FAO		NotSpecifiedOrg		KBC (Kayin), UNICEF, UNHCR		WFP	HURFOM	AFXB, IOM, PSI, TBC (KWO), UNICEF, UNHCR, WHO, MAM			SCI					Tdh-L, HURFOM			15
Mon	Kyaikto	MMR011009	IDE/Proximity, WC			WC	KBC (Kayin), UNICEF			KHRG, MEET	AFXB, IOM, MNMA, PSI, UNICEF, WHO, WC, MalariaCons					UNICEF, WC			KHRG, NRC, Tdh-L		WC	14
Mon	Mawlamyine	MMR011001	FAO, HAI			HAI	AFXB, KBC (Kayin), UNICEF, WV, NotSpecifiedOrg		WFP	COM, UNDP, HURFOM	AFXB, FHI 360, HAI, IHA, IOM, IFRC, JRC, MSI, MPG, MRCS, MNMA, PSI, UNICEF, WHO, WV, EMW, MalariaCons			HAI, MRCS, SCI, UNDP		UNICEF	AYO, IOM, NPA		AFXB, MSI, MRCS, Thingaha, UNICEF, WV, Tdh-L, NP, NotSpecifiedOrg, HURFOM			30
Mon	Mudon	MMR011005	FAO				UNICEF		WFP	HURFOM	AFXB, IHA, IOM, MPG, MNMA, PSI, UNICEF, WHO, MAM			SCI					HURFOM			13

State/ Region	Township	Township Pcode	Agriculture	CCCM	Coordinat ion	Disaster Risk Reduction	Education	Environment	Food	Governance	Health	Logis tics	Mine Action	Non-Agricultural Livelihoods/ Infrastructure	Non- Food Items	Nutrition	Peace Building/ Conflict Prevention	Private Sector Development	Protection	Shelter	WASH	Count of Orgs.
Mon	Not Specified		NotSpecifiedOrg		UNFPA		NPA			DCA, NPA			ICRC	NotSpecifiedOrg			NPA		NPA			5
Mon	Paung	MMR011008	IDE/Proximity				AFXB, UNICEF			HURFOM	AFXB, MPG, PSI, UNICEF, WHO, MAM, MalariaCons			UNDP		UNICEF			AFXB			10
Mon	Thanbyuzayat	MMR011004					KBC (Kayin), UNICEF, WV		WFP	SCI/FLD, HURFOM	IHA, IOM, MPG, PSI, UNICEF, WHO, WV, MalariaCons		DCA-CM (KTWG)	UNDP, WV					SCI/FLD, UNICEF, WV, Tdh-L, HURFOM			15
Mon	Thaton	MMR011007	AFXB, IDE/Proximity, WC			IOM, WC	AFXB, KBC (Kayin), UNICEF, UNHCR		AFXB	KHRG, HURFOM	IOM, MSI, MPG, MNMA, PSI, TBC (KWO), UNICEF, UNHCR, WHO, WC, EMW		DCA-CM (CIDKP), DCA-CM (KTWG)	DCA, WC		UNICEF, WC	NPA		KHRG, MSI, NRC, TLMM, UNICEF, UNHCR		AFXB, UNHCR, WC, TBC (BPHWT)	23
Mon	Ye	MMR011006	FAO			IOM, UN- Habitat	KBC (Kayin), SDC, UNICEF		WFP	SCI/FLD, TBC (HURFOM), HURFOM	IOM, MSI, MPG, MNMA, PSI, UNICEF, WHO, MAM, CPI						IOM, NPA		MSI, NRC, SCI/FLD, UNHCR, Tdh-L, HURFOM, TBC (HURFOM & MRDC)		UNHCR, NotSpecified Org	23
Shan (East)	Ho Tawng (Ho Tao)	MMR016320					UNICEF, WFP				Malteser											3
Shan (East)	Kengtung	MMR016001	SWISSAID, WV				UNICEF, WV	SWISSAID	WFP		IFRC, JRC, Malteser, MRCS, PSI, UNICEF, WHO, WV			SWISSAID					MRCS, SWISSAID, WV, Tdh-L			11
Shan (East)	Mong Hpen	MMR016319					UNICEF, WFP		WFP		Malteser											3
Shan (East)	Mong Kar	MMR016322					UNICEF, WFP				WHO											3
Shan (East)	Mong Pawk	MMR016321					UNICEF, WFP				Malteser, MRCS											4
Shan (East)	Monghpyak	MMR016010					UNICEF				IFRC, Malteser, PSI, WHO											5
Shan (East)	Monghsat	MMR016006	TBC (SSDF)				UNICEF				Malteser, PSI, UNICEF, WHO											5
Shan (East)	Mongkhet	MMR016002					UNICEF				Malteser, MRCS, PSI, UNICEF, WHO											5
Shan (East)	Mongla	MMR016005					UNICEF		WFP		Malteser, PSI											4
Shan (East)	Mongping	MMR016007					UNICEF				Malteser, MRCS, PSI, UNICEF, WHO											5
Shan (East)	Mongton	MMR016008					UNICEF				Malteser, MRCS, PSI, UNICEF, WHO								TBC (SSDF)			6
Shan (East)	Mongyang	MMR016003					UNICEF				Malteser, PSI, WHO											4
Shan (East)	Mongyawng	MMR016011					UNICEF				Malteser, MRCS, PSI, UNICEF, WHO											5
Shan (East)	Nam Hpai	MMR016323					UNICEF, WFP															2
Shan (East)	Not Specified				UNFPA					NPA	UNFPA						NPA					2
Shan (East)	Tachileik	MMR016009				CACH, IFRC, KMSS	UNICEF, WV		WFP		Malteser, MANA, MRCS, PSI, UNICEF, UNFPA, WHO, WV								UNICEF, WV			12
Shan (South)	Hopong	MMR014003	FAO, IDE/Proximity, SWISSAID, UNODC				SAETENAR, UNICEF	SWISSAID			MRCS, PSI, UNICEF, UNFPA, WHO			SWISSAID, UNDP			MC, STH		NRC, PGK, SWISSAID, Tdh-L			16
Shan (South)	Hsihseng	MMR014004	FAO, IDE/Proximity, SWISSAID				SAETENAR, UNICEF, WFP	SWISSAID		SCI/FLD	MRCS, PSI, RI, UNICEF, UNFPA, WHO			SWISSAID			STH		NRC, SCI/FLD, STH, SWISSAID			14
Shan (South)	Kalaw	MMR014005	FAO, IDE/Proximity				KBC (Kayin), UNICEF	MIID			MPG, PGK, PSI, UNFPA, WHO			PGMF			MC, STH	MC	PGK, STH, Tdh-L			14
Shan (South)	Kunhing	MMR014014					UNICEF				Malteser, MRCS, PSI, UNICEF, WHO											5
Shan (South)	Kyethi	MMR014015					UNICEF				MSF-H, PSI, WHO											4
Shan (South)	Laihka	MMR014012					UNICEF				MRCS, MNMA, PSI, RI, WHO								Tdh-L, TBC (SSDF)			8
Shan (South)	Langkho	MMR014018	TBC (SSDF)				UNICEF				PSI, UNICEF, WHO											4
Shan (South)	Lawksawk	MMR014008	FAO, IDE/Proximity				SAETENAR, UNICEF				MRCS, PSI, WHO						MC	MC				8
Shan (South)	Loilen	MMR014011	UNODC				SAETENAR, UNICEF				MPG, PSI, UNFPA, WHO								STH			8
Shan (South)	Mawkmai	MMR014020					UNICEF				PSI, RI, WHO											4
Shan (South)	Monghsu	MMR014017					UNICEF				MSF-H, PSI, WHO								Tdh-L			5
Shan (South)	Mongkaing	MMR014016				MCS	UNICEF				MRCS, PSI			MCS							MCS	4
Shan (South)	Mongnai	MMR014019					UNICEF				MRCS, PSI, UNICEF, WHO											4
Shan (South)	Mongpan	MMR014021					UNICEF				PSI, WHO								TBC (SSDF)			4
Shan (South)	Nansang	MMR014013					UNICEF				MRCS, PSI, UNFPA											4
Shan (South)	Not Specified				UNFPA		NotSpecifiedOrg			NPA							NPA		NPA, NotSpecifiedOrg			3
Shan (South)	Nyaungshwe	MMR014002	FAO, IDE/Proximity, MCS		MIID	MCS	KBC (Kayin), UNICEF	MIID, MERN, UNDP, UNESCO		DCA, SCI	PSI, WHO			DCA, MCS, PGMF			MC, STH, GDI	MC	NGOGG, STH		MCS	18
Shan (South)	Pekon	MMR014010	DM				KBC (Kayin), RMECG, SAETENAR, UNICEF, WFP		WFP	SCI, SCI/FLD, GDI	DM, MRCS, PSI, UNICEF, UNFPA, WHO, TBC (KDHW)						DM, STH, GDI		SCI/FLD, STH, UNICEF			15
Shan (South)	Pindaya	MMR014006	SWISSAID				SAETENAR, UNICEF	SWISSAID			MRCS, PSI, UNICEF, UNFPA, WHO			SWISSAID, PGMF			MC	MC	PGK, STH, SWISSAID			11
Shan (South)	Pinlaung	MMR014009	IDE/Proximity				KBC (Kayin), SAETENAR, UNICEF			DCA	PSI, WHO			PGMF				MC	NGOGG, NRC, STH			12
Shan (South)	Taunggyi	MMR014001	FAO, IDE/Proximity, SWISSAID				KBC (Kayin), SAETENAR, UNICEF	SWISSAID	WFP	COM, UNDP	MPG, MRCS, MNMA, PGK, PSI, UNICEF, UNFPA, WHO, EMW			SWISSAID		UNICEF	MC, NPA, STH, GDI		AAM, MRCS, NYWCA, NRC, STH, SWISSAID, Thingaha, UNICEF, TDH NL, Tdh-L			27
Shan (South)	Ywangan	MMR014007					SAETENAR, UNICEF	MERN			AFXB, IFRC, MRCS, PSI, UNFPA, WHO			PGMF								10
Tanintharyi	Bokpyin	MMR006010					KBC (Kayin), UNICEF				JRC, MSF-CH, PSI, UNICEF, UNHCR, WHO											7
Tanintharyi	Dawei	MMR006001					KBC (Kayin), NRC, UNICEF, UNHCR, NotSpecifiedOrg	WCS		COM, NotSpecifiedOrg	IHA, JRC, MSI, MSF-CH, MPG, MNMA, PSI, UNICEF, WHO, WV, CFM, EMW, CPI		DCA-CM (KTWG)			UNICEF	NPA		AAM, MRCS, NRC, TBC (CIDKP), UNICEF, WV, CFM, TBC (TRIP NET)		UNHCR, TBC (BPHWT), NotSpecified Org	28
Tanintharyi	Kawthoung	MMR006009					BIMM, UNICEF, WV	Oikos			JRC, MPG, MNMA, PSI, UNICEF, WHO, WV					UNICEF	IOM		UNICEF, WV			10
Tanintharyi	Kyunsu	MMR006006					KBC (Kayin), UNICEF			MC	JRC, MNMA, PSI, WHO								NotSpecified Org			8
Tanintharyi	Launglon	MMR006002					BIMM, UNICEF			WV, HURFOM	JRC, MSF-CH, MPG, PSI, UNICEF, WHO, WV								NRC, WV			10
Tanintharyi	Myeik	MMR006005					BIMM, KBC (Kayin), PDO, UNICEF, WV			SCI/FLD	JRC, MPG, PSI, WHO, WV, EMW			KBC (Kayin)		UNICEF			NRC, SCI/FLD, WV, Tdh-L		UNHCR, WV, NotSpecifiedOrg	15
Tanintharyi	Not Specified		NotSpecifiedOrg		UNFPA	UN- Habitat		DCA, WWF		DCA, NPA			ICRC	DCA, NotSpecifiedOrg					NPA, NotSpecifiedOrg			7
Tanintharyi	Palaw	MMR006007					KBC (Kayin), UNICEF, WV				JRC, PSI, WHO, WV		DCA-CM (KTWG)				NPA		AFXB, NRC, TBC (CIDKP)	NRC	NRC, UNHCR, NotSpecifiedOrg	13
Tanintharyi	Tanintharyi	MMR006008					KBC (Kayin), NRC, UNICEF, WV			KHRG, SCI/FLD	JRC, MPG, MNMA, PSI, TBC (KWO), UNICEF, UNHCR, WHO, WV		DCA-CM (KTWG)	SCI/FLD		UNICEF			KHRG, NRC, SCI/FLD, TBC (KWO), TBC (CIDKP), WV, TBC (KHRG)			16
Tanintharyi	Thayetchaung	MMR006003					KBC (Kayin), NRC, UNICEF				JRC, MSF-CH, MPG, PSI, TBC (KWO), UNHCR, WHO, WV		DCA-CM (KTWG)	KBC (Kayin)					AFXB, NRC, WV			13
Tanintharyi	Yebyu	MMR006004					BIMM, KBC (Kayin), UNICEF			TBC (HURFOM), HURFOM	JRC, MSF-CH, MPG, PSI, TBC (KWO), WHO, MAM, CPI			DCA, KBC (Kayin), TBC (MRDC)					NRC, TBC (HURFOM), HURFOM, TBC (HURFOM & MRDC)		NotSpecifiedOrg	18