

## Overview of the Oct. 2013 3W for TANINTHARYI

The MIMU 3W gathers inputs from participating agencies on Who is doing What, Where in Myanmar. It is currently conducted every 6 months.

159 agencies participated in the October 13 3W, providing information on their activities in 18 sectors and 133 sub-sectors which have been defined by technical/sector working groups. There is still likely to be under-reporting of the specific activities of field-based local NGOs and CBOs.

This overview of the reported 3W results in Tanintharyi describes projects under implementation as of October 23, 2013. Further information on proposed and recently completed projects is available from the 3W dataset, published on the MIMU website.

### 1. Active Organizations in Tanintharyi

A total of 26 organizations reported projects under implementation in Tanintharyi. The majority are NGOs/CBOs, only one of which is border-based. There is some level for agency activity reported in most village tracts, with agencies more concentrated in Dawei, Myeik and Tanintharyi townships.

Org. Type	INGO	NNGO	UN	Red Cross	CBO*	Donor	Embassy	BBO*	Total
Countrywide	74	56	13	3	3	2	1	7	159
Tanintharyi	14	3	4	1	1	1		2	26
BBO* - Border-based Organization					CBO* - Community Based Organization				

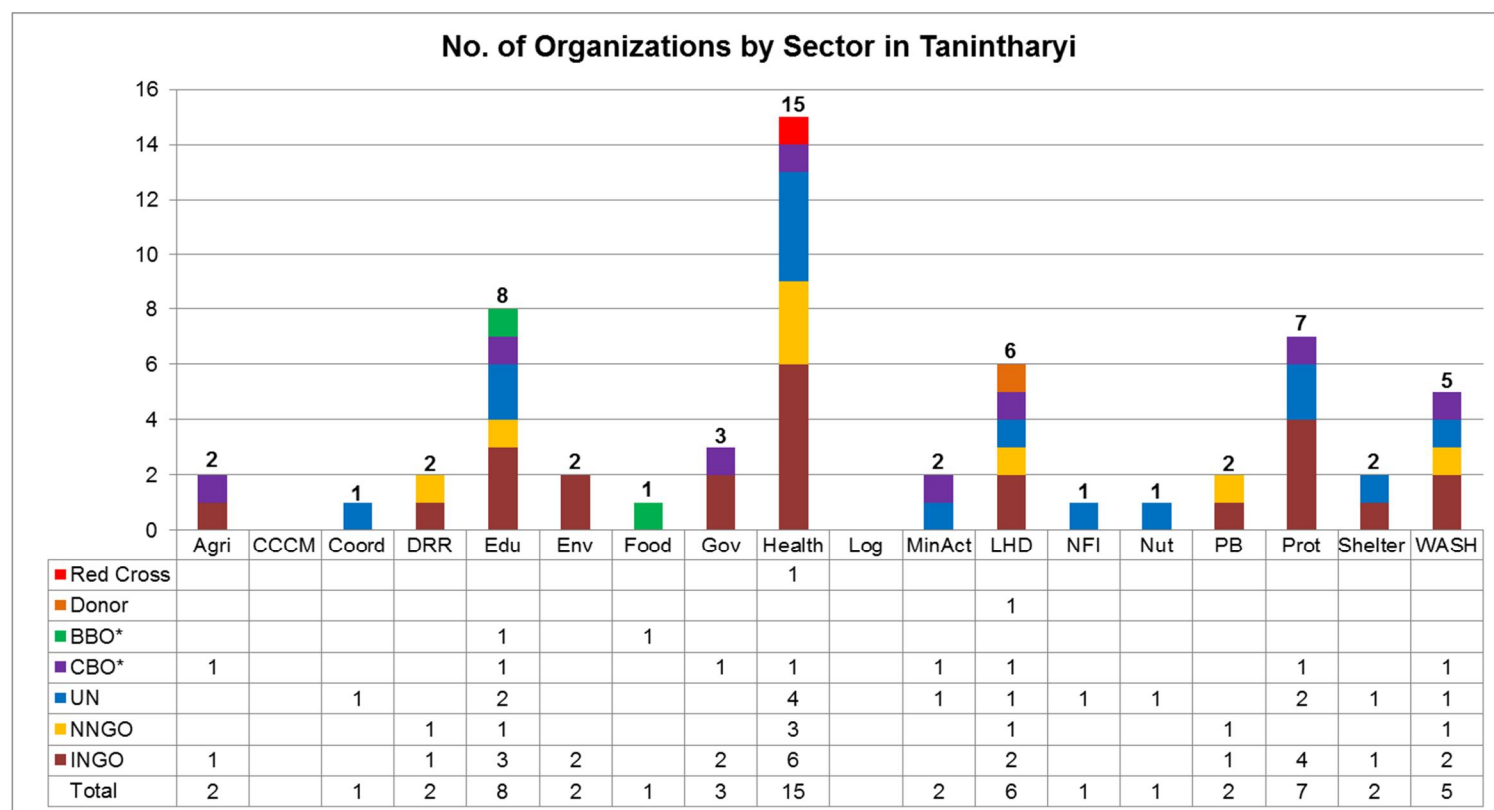
### 2. Projects by Sector

91 projects were reported in 16 sectors (14% of the total projects reported to the 3W). The ranking of project interventions mirrors that for the rest of the South East, though the sub-sector focus within the sectors may be different.

- Health is the most widespread intervention with 15 organizations reportedly implementing 37 projects in 403 villages. There is some level of health activity in all 10 townships, though more concentrated in the townships of Dawei, Myeik and Tanintharyi. The majority of health interventions are Malaria Programme (342 villages), TB Programme (130), Reproductive Health Care (92) and Women and Child Health (56).
- Protection is the second most commonly reported sector with activities by 7 agencies in 115 villages, mostly in Child Protection (98 villages).
- Education is the third main sector in Tanintharyi with organizations active in 86 villages (8 organizations), most frequently in ECD (42 villages), support to Quality Basic Education (27) and NFE (22).
- WASH is the fourth main sector of agency activities, mainly through health promotion activities (59 villages).
- There is far less attention to other sectors; Non-agricultural livelihoods (6 agencies, 19 villages), Governance (3 agencies), DRR (2 agencies, 14 villages), and Agriculture (2 agencies, 7 villages).

## Overview of the Oct. 2013 3W for TANINTHARYI

Summary Reports by Sector in Tanintharyi Region with Projects Under Implementation as of 23rd October 2013					
Sector	No. of Projects	No. of Organizations	No. of Township	No. of Village Tracts/Towns	No. of Villages/Wards
Agriculture	2	2	3	5	7
CCCM					
Coordination	2	1	2		
Disaster Risk Reduction	3	2	1	3	14
Education	15	8	10	56	86
Environment	2				
Food	1	1	1	3	
Governance	7	3	4	11	15
Health	37	15	10	196	403
Mine Action	2	2	2	5	6
Non-Agricultural Livelihoods/ Infrastructure	8	6	9	12	19
Non-Food Items	1	1	2	2	1
Nutrition	3	1	4		
Peace Building/Conflict Prevention	7	2	2		
Protection	17	7	8	66	115
Shelter	2	2	6	4	4
WASH	7	5	6	44	59
<b>Grand Total (All Sectors)</b>	<b>91 (14%)</b>	<b>26 (16%)</b>	<b>10 (100%)</b>	<b>197 (75%)</b>	<b>451 (36%)</b>



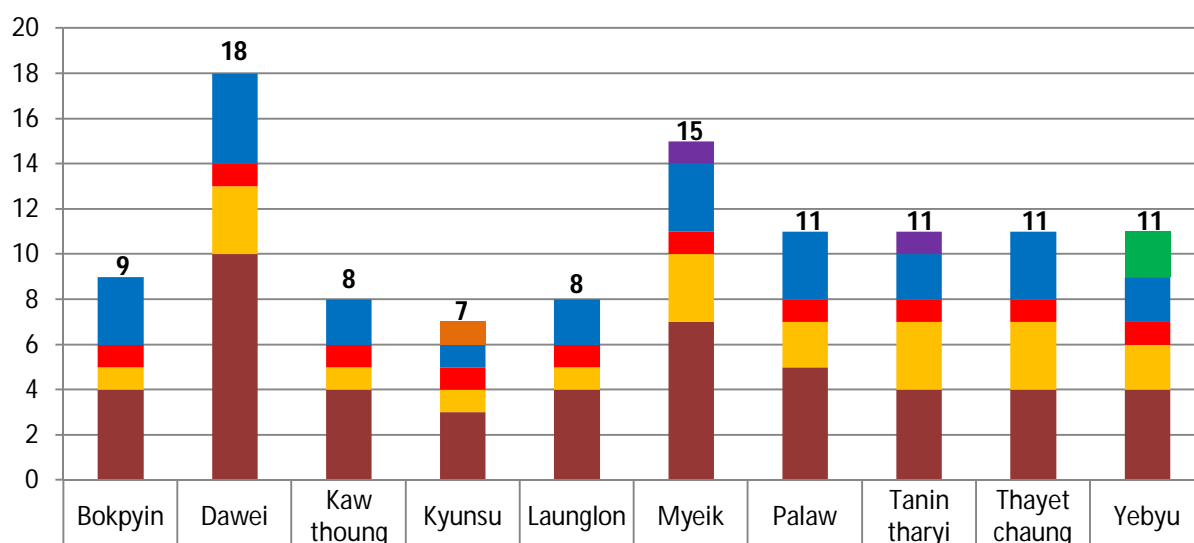
## Overview of the Oct. 2013 3W for TANINTHARYI

No. of Organizations by Sector and type of Organization (as of October 23, 2013)								
Sector	INGO	NNGO	UN	CBO*	BBO*	Donor	Red Cross	Total
Agriculture	1			1				2
CCCM								
Coordination			1					1
DRR	1	1						2
Education	3	1	2	1	1			8
Environment	2							2
Food					1			1
Governance	2			1				3
Health	6	3	4	1			1	15
Logistics								
Mine Action			1	1				2
Non-Agricultural LH/Infrastructure	2	1	1	1		1		6
Non-Food Items			1					1
Nutrition			1					1
Peace Building/Conflict Prevention	1	1						2
Protection	4		2	1				7
Shelter	1		1					2
Wash	2	1	1	1				5

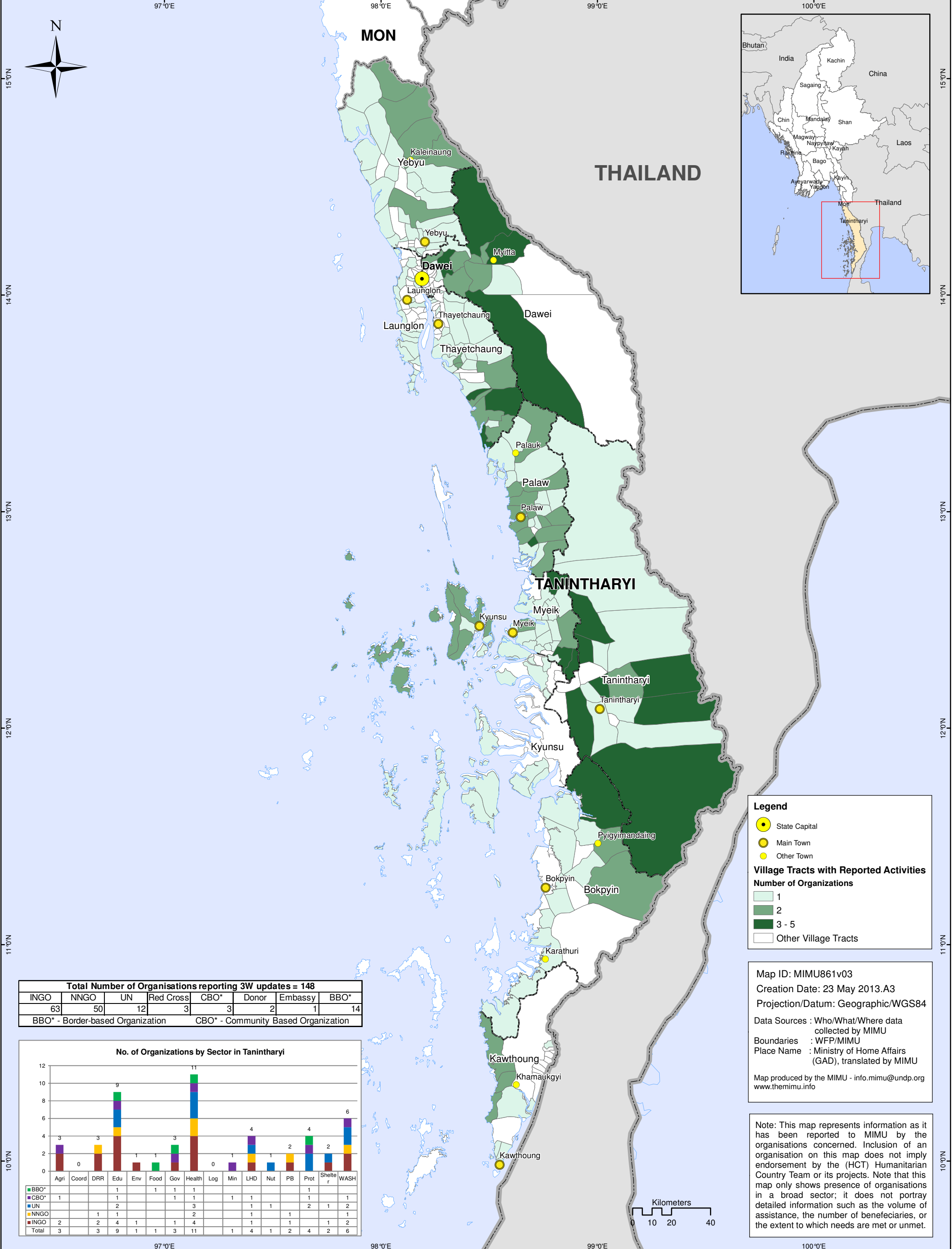
No. of Organizations by Sector and Township ( as of October 23, 2013)																			
Township	Agriculture	CCCM	Coordination	Disaster Risk Reduction	Education	Environment	Food	Governance	Health	Logistics	Mine Action	Non-agricultural livelihoods/ Infrastructure	Non-Food Items	Nutrition	Peace Building/ Conflict Prevention	Protection	Shelter	WASH	Tsp. Total
Bokpyin					3	1			7			1					1	1	9
Dawei	1		1		5			1	12			3		1	2	5	2	2	18
Kawthoung					2	1			7					1		2			8
Kyunsu				2	1				3			1							7
Launglon					1			1	7			1				1			8
Myeik	2		1		6			1	10		1	4	1	1		4	1	4	15
Palaw					3				7			2			2	1	2	3	11
Tanintharyi	1				5			1	10		2	2	1	1		3	1	3	11
Thayetchaung					2				8			2				3	1	2	11
Yebyu					2		1		7			1				1			11
Sector Total	2		1	2	8	2	1	3	15		2	6	1	1	2	7	2	5	

## Overview of the Oct. 2013 3W for TANINTHARYI

### No. of Organizations by Township in Tanintharyi



Donor				1						
CBO						1		1		
BBO										2
UN	3	4	2	1	2	3	3	2	3	2
Red Cross	1	1	1	1	1	1	1	1	1	1
NNGO	1	3	1	1	1	3	2	3	3	2
INGO	4	10	4	3	4	7	5	4	4	4
Grand Total	9	18	8	7	8	15	11	11	11	11



# Who/What/Where - Tanintharyi - Organisation Presence at Township Level by Sector as of 23 April 2013 (Projects Under Implementation)

Township	Township_pCode	Agriculture	Coordination	Disaster Risk Reduction	Education	Environment	Food	Governance	Health	Mine_Action	Non-agricultural livelihoods/ Infrastructure	Nutrition	Peace Building/ Conflict Prevention	Protection	Shelter	WASH	Count of Orgs.
Bokpyin	MMR006010				NRC, UNICEF, UNHCR	Oikos			MSF-CH, PSI, UNICEF, UNHCR, FFH		UNHCR			UNHCR	NRC, UNHCR	NRC, UNHCR	7
Dawei	MMR006001	CARITAS-Thai, WV			ADRA, CARITAS-Thai, KDN, MNEC, UNICEF, UNHCR			NPA	IHA, MSF-CH, PSI, UNICEF, UNHCR, WFP, FFH		CARITAS-Thai, KDN		KDN, NPA	UNICEF, UNHCR	UNHCR	UNHCR	13
Kawthoung	MMR006009			WV	ADRA, UNICEF	Oikos			MSF-CH, PSI, UNICEF			UNICEF		UNICEF		UNICEF	6
Kyunsu	MMR006006			KDN, AAM	UNICEF				MSF-CH, PSI								5
Launglon	MMR006002				UNICEF				MSF-CH, PSI, UNICEF							UNICEF	3
Myeik	MMR006005	CARITAS-Thai		WV	CARITAS-Thai, UNICEF, UNHCR, WV				KDN, MSF-CH, PSI, UNHCR, FFH		CARITAS-Thai, KDN, UNHCR			UNHCR,	UNHCR	KDN, UNHCR	9
Palaw	MMR006007	WV			UNICEF, UNHCR				KDN, MSF-CH, PSI, UNHCR, WFP, FFH		KDN		KDN, NPA	UNHCR	UNHCR	KDN, UNHCR	9
Tanintharyi	MMR006008				NRC, UNICEF, UNHCR			KHRG	KDN, MSF-CH, PSI, PU-AMI, UNICEF, UNHCR, FFH, TBC (KWO)		UNHCR	UNICEF		KHRG, UNHCR	NRC, UNHCR	KDN, NRC, UNHCR	11
Thayetchaung	MMR006003				UNICEF, UNHCR				KDN, MSF-CH, PSI, UNHCR, WFP, FFH, TBC (KWO)		KDN			UNHCR	UNHCR	KDN, UNHCR	8
Yebyu	MMR006004				UNICEF, UNHCR		TBC (MRDC)	NPA	MSF-CH, PSI, UNICEF, UNHCR, FFH, TBC (KWO)					UNHCR	UNHCR	NPA	8
Not Specified												UNICEF	NPA	UNHCR			3

## Tanintharyi Region - Summary of Organizations' Sub Sectors Interventions

### Projects Under Implementation as of 23 October 2013

Sector	Sub Sector	No. of Projects	No. of Organizations	No. of Townships	No. of Village Tracts/Towns	No. of Villages/Wards
Agriculture	Capacity Building (Agricultural Livelihood)	1	1	2	4	5
	Livestock and poultry	1	1	2	4	5
	Provision of paddy plantation & cultivation	1	1	2	2	2
<b>Sector Total (AGRICULTURE)</b>		<b>2</b>	<b>2</b>	<b>3</b>	<b>5</b>	<b>7</b>
Coordination	General Coordination	1	1	2		
	Information Management	1	1			
<b>Sector Total (COORDINATION)</b>		<b>2</b>	<b>1</b>	<b>2</b>		
DisasterRiskReduction	Community based Disaster Preparedness and Risk Reduction	3	2	1	3	14
<b>Sector Total (DRR)</b>		<b>3</b>	<b>2</b>	<b>1</b>	<b>3</b>	<b>14</b>
Education	Early Childhood Development	3	2	7	27	42
	Food for Education	1	1	2	4	5
	Non-Formal Education	7	4	10	22	22
	Quality Basic Education/Formal Education	5	4	7	16	27
<b>Sector Total (EDUCATION)</b>		<b>15</b>	<b>8</b>	<b>10</b>	<b>56</b>	<b>86</b>
<b>Environment</b>		<b>2</b>	<b>2</b>	<b>2</b>		
Food	General Food Distribution	1	1	1	3	
<b>Sector Total (FOOD)</b>		<b>1</b>	<b>1</b>	<b>1</b>	<b>3</b>	
Governance	Human Rights Promotion and Advocacy	2	1	1		
	Institutional Strengthening and Public Administration Reform	1	1	1		
	Strengthening civil society	5	3	4	11	15
	Transparency/Accountability	1	1	1		
<b>Sector Total (GOVERNANCE)</b>		<b>7</b>	<b>3</b>	<b>4</b>	<b>11</b>	<b>15</b>
Health	Basic Health Care	4	3	4	19	40
	Control of Communicable Diseases	2	2	7		
	Disease surveillance	1	1	1		
	Health Education	4	4	10	20	5
	HIV/AIDS Programme	12	9	10	10	31
	Malaria Programme	6	6	10	178	342
	Reproductive Health Care	3	3	9	43	92
	Revitalization of existing HS - HR	1	1	1		
	Revitalization of existing HS - Infrastructure	1	1	2	2	2
	Revitalization of existing HS- Equipment&Supplies	1	1	1		
	TB Programme	5	5	10	72	130
	Women and Child Health	8	3	7	33	56
<b>Sector Total (HEALTH)</b>		<b>37</b>	<b>15</b>	<b>10</b>	<b>196</b>	<b>403</b>

# Tanintharyi Region - Summary of Organizations' Sub Sectors Interventions

## Projects Under Implementation as of 23 October 2013

Sector	Sub Sector	No. of Projects	No. of Organizations	No. of Townships	No. of Village Tracts/Towns	No. of Villages/Wards
Mine Action	Mine-Risk Education	1	1	2	4	5
	Victim Assistance	1	1	1	1	1
<b>Sector Total (MINE ACTION)</b>		<b>2</b>	<b>2</b>	<b>2</b>	<b>5</b>	<b>6</b>
Non-Agricultural Livelihoods/Infrastructure	Income Generation	3	3	5	7	9
	Micro-Finance	3	2	6	5	5
	Rehabilitation-Community Infrastructure & Facility	3	2	5	6	11
	Social Recovery	1	1	2	4	5
<b>Sector Total (NON-AGRICULTURAL LIVELIHOODS/INFRASTRUCTURE)</b>		<b>8</b>	<b>6</b>	<b>9</b>	<b>12</b>	<b>19</b>
NonFoodItems	NFI Distribution	1	1	2	2	1
<b>Sector Total (NON-FOOD ITEMS)</b>		<b>1</b>	<b>1</b>	<b>2</b>	<b>2</b>	<b>1</b>
Nutrition	Inpatient Therapeutic Programme (ITP)	1	1	2		
	Multiple Micronutrient Supplementation	1	1	3		
<b>Sector Total (NUTRITION)</b>		<b>3</b>	<b>1</b>	<b>4</b>		
Peace Building/Conflict Prevention	Conflict transformation and Peacebuilding	4	2	2		
	Rehabilitation of conflict-affected infrastructure	1	1	1		
	Support for durable solutions for returnees	1	1	2		
<b>Sector Total (PEACE BUILDING/CONFLICT PREVENTION)</b>		<b>7</b>	<b>2</b>	<b>2</b>		
Protection	Awareness Raising on Protection Issues	3	1	2		
	Child Protection	11	5	7	56	98
	Community Based Protection (Groups)	2	1	1	10	15
	Family Tracing	1	1	1		
	Human Trafficking	1	1	1	1	5
	Promoting Gender Equality and Empowerment of Women	1	1	2	4	5
	Protection Assessment	1	1	5		
<b>Sector Total (PROTECTION)</b>		<b>17</b>	<b>7</b>	<b>8</b>	<b>66</b>	<b>115</b>
Shelter	Permanent Shelter	1	1	2	4	4
	Shelter Assessment	1	1	6		
<b>Sector Total (SHELTER)</b>		<b>2</b>	<b>2</b>	<b>6</b>	<b>4</b>	<b>4</b>
WASH	Construction & Rehabilitation -Sanitation Facility	2	2	4	4	5
	Construction & Rehabilitation -Water Facility	3	2	4	7	8
	Hygiene Promotion	5	5	6	44	59
<b>Sector Total (WASH)</b>		<b>7</b>	<b>5</b>	<b>6</b>	<b>44</b>	<b>59</b>
<b>Grand Total (All Sectors)</b>		<b>96 (15%)</b>	<b>26 (16%)</b>	<b>10 (100%)</b>	<b>197 (75%)</b>	<b>451 (36%)</b>