

Overview of the Apr. 2014 3W for SOUTH EAST of Myanmar

(Bago (East), Kayah, Kayin, Mon, Shan (East), Shan (South) and Tanintharyi)

The MIMU 3W gathers inputs from participating agencies on Who is doing What, Where in Myanmar. It is currently conducted every 6 months.

174 agencies participated in the April 2014 3W, providing information on their activities in 18 sectors and 133 sub-sectors which have been defined by technical/sector working groups. There is still likely to be under-reporting of the specific activities of field-based local NGOs and CBOs.

This overview of the 3W results in South East Myanmar covers activities reported in Bago East, Kayah, Kayin, Mon, Shan East, Shan South and Tanintharyi.

The following tables and chart describe projects under implementation as of April 28, 2014. Further information on proposed and recently completed projects is available from the 3W dataset, published on the MIMU website.

1. Active Organizations

A total of 104 organizations reported projects under implementation across the SE. The majorities are NGOs (90 agencies, 17 of whom are border-based). In terms of project spread, 53 agencies reported activities in Kayin, followed by Mon (49 agencies), Shan South (42), Kayah (40), Bago East (38), Tanintharyi (35), and a lower reported concentration in Shan East (15 agencies).

Org. Type	INGO	NNGO	UN	Red Cross	CBO*	Donor	Embassy	BBO*	Total
Countrywide	76	60	13	4	2	1	1	17	174
South East	48	25	10	1	1	1	1	17	104
BBO* - Border-based Organization					CBO* - Community Based Organization				

2. Projects by Sector

327 projects were reported in 15 sectors, making up 47% of the total projects reported to the 3W.

- **Health is the most widespread intervention** with 42 agencies reportedly implementing some form of health activities through 117 projects in 2,666 villages spread across all 84 townships. The majority are Malaria Programme activities (1,339 villages), followed by Reproductive Health Care (966 villages) and Health Education (945) villages. Health activities are found in all the states/regions but most concentrated in Kayin and Mon.
- **Protection is the second most commonly reported sector** with activities under implementation by 28 agencies in 1,472 villages. These consisted mainly of activities around Civil Documentation (922 villages), Child Protection (366 villages) and Promoting Gender Equality and Empowerment of Women activities (133 villages). Protection agencies are widely spread in all states and regions except few agencies reported in Shan (East).
- **Non-Agricultural Livelihoods and Infrastructure is the third main sector** is with 21 agencies implementing 34 projects reaching 1,081 villages in 55 townships. These are mainly Microfinance interventions (731 villages), followed by income Generation activities (310 villages), Social Recovery (204), Vocational Training (199) and Cash-for-work interventions (127). Non-Agricultural Livelihoods activities are more numerous in Kayin, Mon and Kayah with the least activities reported in Shan East.

Overview of the Apr. 2014 3W for SOUTH EAST of Myanmar

(Bago (East), Kayah, Kayin, Mon, Shan (East), Shan (South) and Tanintharyi)

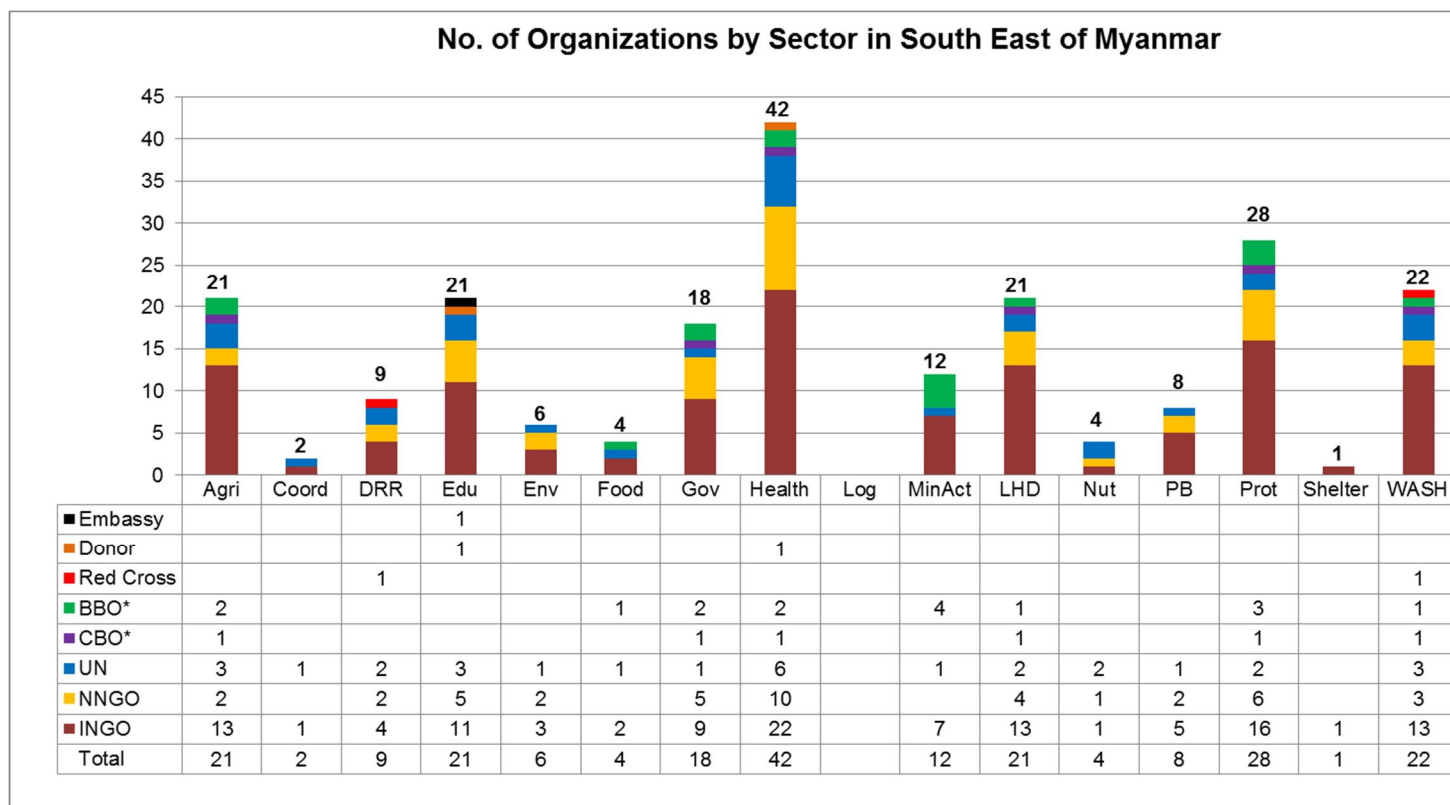
Other sectors in order of spread of activities are:

- **Education** - under implementation in 989 villages by 21 organizations, most frequently ECD (785 villages), support to the Quality Basic Education (131), followed by NFE support (53) and Food for Education (47). Agency activities are more concentrated in Kayin, Mon, Shan (South), Kayah and Bago (East).
- **WASH** - 22 organizations in 500 villages, most frequently focused in Construction/Rehabilitation of Water Facilities (260), Construction/Rehabilitation of Sanitation Facilities (153), Safe Water Supply (98) and Hygiene Promotion (91).
- **Agriculture** – 21 organizations reporting activities in 469 villages in 41 townships, the main subsectors being Agriculture Inputs (167 villages), Agriculture Development (125), Agricultural Alternative Development (119), Provision of paddy plantation & cultivation (114), and Capacity Building (95).
- **Governance** activities are reported by 18 agencies reaching 358 villages, mostly focused on Strengthening Civil Society (172 villages) and Institutional Strengthening and Public Administration Reform (119 villages).
- **Disaster Risk Reduction** / DRR activities are reported by 9 agencies reaching 179 villages, mostly focused on Community based Disaster Preparedness and Risk Reduction (102 villages) and Public Awareness, Education and Training (78 villages).
- **Mine Action** activities are reported by 12 agencies reaching 112 villages, mostly in Mine Risk Education (107 villages).
- **Environment** activities are reported by 6 agencies reaching 93 villages in 11 townships.
- **Nutrition** activities are reported by 4 agencies reaching 61 villages, mostly in Multiple Micronutrient Supplementation (61 villages)
- **Food** activities are reported by 4 agencies reaching 40 villages, mostly focused on General Food Distribution (29 villages).
- **Peacebuilding/Conflict Prevention** activities reported by 8 agencies reaching 33 villages with activities in Conflict Transformation and Peacebuilding (20) and Support for Durable Solutions for Returnees (13).
- **Shelter activities** mainly focusing on Permanent Shelter activities are reported by 1 agency reaching in 9 villages in 2 townships.

Summary Reports by Sector in SOUTH EAST of Myanmar: Projects Under Implementation as of Apr 28, 2014					
Sector	No. of Projects	No. of Organizations	No. of Townships	No. of Village Tract/ Town	No. of Village/Ward
Agriculture	30	21	41	210	469
Coordination	2	2	1		
Disaster Risk Reduction	12	9	17	120	179
Education	45	21	84	504	989
Environment	7	6	11	46	93
Food	7	4	30	93	40
Governance	33	18	84	180	358
Health	117	42	84	1047	2666
Mine Action	13	12	17	51	112
Non-Agricultural Livelihoods/ Infrastructure	34	21	55	373	1081
Nutrition	7	4	25	37	61
Peace Building/ Conflict Prevention	15	8	32	23	33
Protection	45	28	84	593	1472
Shelter	1	1	2	5	9
WASH	27	22	32	224	500
Grand Total (All Sectors)	327 (47%)	104 (60%)	84 (100%)	1614 (65%)	5275 (30%)
	(% of Total in Countrywide)		(% of Total in South East of Myanmar)		

Overview of the Apr. 2014 3W for SOUTH EAST of Myanmar

(Bago (East), Kayah, Kayin, Mon, Shan (East), Shan (South) and Tanintharyi)



No. of Organizations by Sector by Type of Organization (as of April 28, 2014)

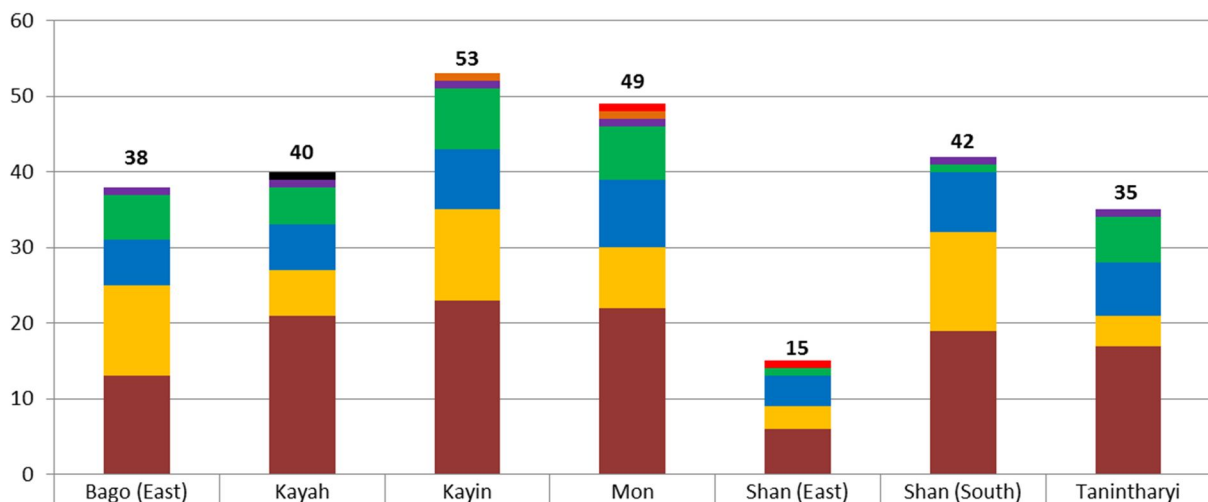
Sector	INGO	NNGO	UN	CBO*	BBO*	Red Cross	Donor	Embassy	Total
Agriculture	13	2	3	1	2				21
Coordination	1		1						2
DRR	4	2	2			1			9
Education	11	5	3				1	1	21
Environment	3	2	1						6
Food	2		1		1				4
Governance	9	5	1	1	2				18
Health	22	10	6	1	2		1		42
Logistics									
Mine Action	7		1		4				12
Non-Agricultural LH/ Infrastructure	13	4	2	1	1				21
Nutrition	1	1	2						4
Peace Building/ Conflict Prevention	5	2	1						8
Protection	16	6	2	1	3				28
Shelter	1								1
WASH	13	3	3	1	1	1			22

Overview of the Apr. 2014 3W for SOUTH EAST of Myanmar

(Bago (East), Kayah, Kayin, Mon, Shan (East), Shan (South) and Tanintharyi)

State/ Region	Agriculture	Coordination	Disaster Risk Reduction	Education	Environment	Food	Governance	Health	Logistics	Mine Action	Non-Agricultural Livelihoods/ Infrastructure	Nutrition	Peace Building/ Conflict Prevention	Protection	Shelter	WASH	State/Region Total
Bago (East)	4	1	2	7		2	7	13		2	5	1	4	12		1	38
Kayah	6	1		7		1	6	11		7	7	2	2	14		6	40
Kayin	7	1	4	13	1	1	11	26		6	11	1	5	14		9	53
Mon	9	1	4	9		2	8	22		1	8	2	2	17		6	49
Shan (East)	2	1	1	3	1	1	2	9			1			5		2	15
Shan (South)	8	2	1	8	4	2	8	12			6	2	2	14		4	42
Tanintharyi	3	1	2	6	1	1	8	14			6	1	4	14	1	5	35
Sector Total	21	2	9	21	6	4	18	42		12	21	4	8	28	1	22	

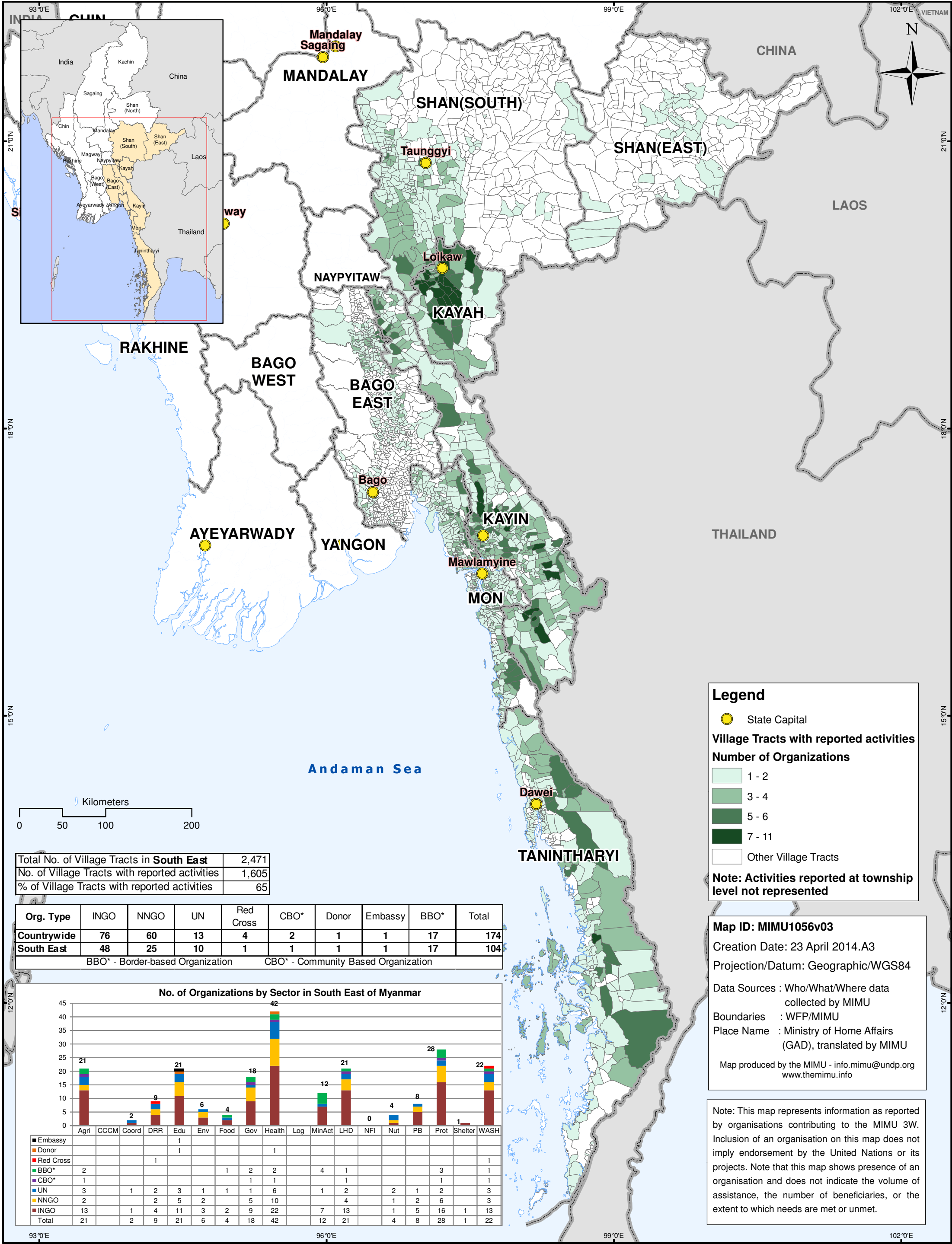
No. of Organizations by State/Region in South East of Myanmar



Red Cross				1	1		
Embassy		1					
Donor			1	1			
CBO	1	1	1	1		1	1
BBO	6	5	8	7	1	1	6
UN	6	6	8	9	4	8	7
NNGO	12	6	12	8	3	13	4
INGO	13	21	23	22	6	19	17
Total	38	40	53	49	15	42	35

SOUTH EAST REGION
All Projects Under Implementation (Village Tract Level)

March 28, 2014



SOUTH EAST - Organisation Presence at Township Level by Sector
Projects Under Implementation
March 28, 2014

State_Region	Township	Township pCode	Agriculture	CCCM	Coordina tion	Disaster Risk Reduction	Education	Environment	Food	Governance	Health	Logist ics	Mine Action	Non-agricultural livelihoods/ Infrastructure	Non-Food Items	Nutrition	Peace Building/ Conflict Prevention	Protection	Shelter	WASH	Count of Orgs.
Bago (East)	Bago	MMR007001	FAO			UN- Habitat	KDN, KBC (Kayin), PDO, UNICEF,			COM, PTE	MSI, MNMA, PSI, WHO			KBC (Kayin)		UNICEF	DCA	PTE, SCI, UNICEF, Tdh-L			16
Bago (East)	Daik-U	MMR007007					KBC (Kayin), PDO			PTE	PSI, UNFPA, WHO			KBC (Kayin)				PTE, Tdh-L			7
Bago (East)	Htantabin	MMR007014	SCI/FLD			KMSS	EHSC, KBC (Kayin), UNICEF			KHRG, PTE, SCI/FLD	PSI, SCI/FLD, WHO, MAM		UNHCR	KBC (Kayin)			NPA	KHRG, PTE, SCI/FLD			12
Bago (East)	Kawa	MMR007003					KBC (Kayin), PDO			PTE	PSI, WHO							PTE			5
Bago (East)	Kyaukkyi	MMR007011					KBC (Kayin), UNICEF		TBC	KHRG, PTE	TBC (KWO), WHO		UNHCR, DCA-CM (CIDKP)	KDN, KBC (Kayin)			NPA,	KHRG, PTE, SCI, TBC (KESAN)			14
Bago (East)	Kyauktaga	MMR007006					KBC (Kayin), PDO			PTE	BIMM, PSI, UNICEF, WHO			DCA, KBC (Kayin)				PTE, Tdh-L			9
Bago (East)	Not Specified				UNFPA					NPA	UNFPA							NPA			3
Bago (East)	Nyaunglebin	MMR007005					KBC (Kayin), PDO		TBC	KHRG, PTE	PSI, WHO			DCA, KDN			NPA	KHRG, PTE, Tdh-L			11
Bago (East)	Oktwin	MMR007013	SCI/FLD				KBC (Kayin), PDO, WV			PTE, SCI/FLD, WV	PSI, SCI/FLD, UNICEF, UNFPA, WHO, WV, MAM			DCA, KBC (Kayin)		UNICEF		PTE, SCI/FLD, TLMM, WV		TBC (KORD)	13
Bago (East)	Phyu	MMR007012					KBC (Kayin)			PTE	PSI, WHO, MAM			DCA, KBC (Kayin)		UNICEF		PTE, Tdh-L			8
Bago (East)	Shwegyin	MMR007008					KBC (Kayin), PDO, UNICEF		TBC	KHRG, PTE	AFXB, BIMM, PSI, RMO, TBC (KWO), WHO		DCA-CM (CIDKP)	DCA, KBC (Kayin), RMO			NPA,	KHRG, PTE, Tdh-L			17
Bago (East)	Taungoo	MMR007009	AAM, SCI/FLD			UN- Habitat	KDN, KBC (Kayin), PDO		AAM, TBC	KHRG, PTE, SCI/FLD, GDI	PSI, SCI/FLD, UNICEF, UNFPA, WHO, MAM			DCA, KBC (Kayin)		UNICEF	DCA, KDN, NPA	KHRG, NYWCA, PTE, SCI, SCI/FLD, TLMM, Tdh-L, GDI			21
Bago (East)	Thanatpin	MMR007002								PTE	PSI, WHO			DCA				PTE, Tdh-L			5
Bago (East)	Waw	MMR007004					PDO			PTE	PSI, UNICEF, UNFPA, WHO							PTE			6
Bago (East)	Yedashe	MMR007010					KBC (Kayin)			PTE	PSI, UNICEF, UNFPA, WHO, MAM					UNICEF		PTE, Tdh-L			8
Kayah	Bawlakhe	MMR002005					KBC (Kayin), UNICEF		TBC	PACT,	FFH, PACT, PSI, UNICEF, WHO						NPA	NRC, SCI, SDI			12
Kayah	Demoso	MMR002002	ACF, SCI/FLD				AVSI, CARE, KBC (Kayin), UNICEF		TBC	AAM, COM, SCI/FLD	CARE, BIMM, FFH, KBC (Kayin), PSI, SCI/FLD, UNICEF, WHO, WV		CRS, IRC, DCA-CM (KSWDC)	IRC, UNDP, UNHCR			CARE, NPA	CARE, NRC, SCI, SCI/FLD, SDI, Thingaha, CFM		ACF, CARE, UN- Habitat	27
Kayah	Hpasawng	MMR002006	DRC				KBC (Kayin), UNICEF		TBC		PACT, PSI, UNICEF, WHO		DRC, FSD	DRC			NPA	DRC, NRC, SCI			11
Kayah	Hpruso	MMR002003	ACF, SCI/FLD				AVSI, KBC (Kayin), UNICEF		TBC	AAM, SCI/FLD	BIMM, FFH, KBC (Kayin), PSI, SCI/FLD, UNICEF, WHO		CRS, DCA-CM (KSWDC)	IRC, UNDP			NPA	NRC, SCI, SCI/FLD, SDI, CFM		ACF	21
Kayah	Loikaw	MMR002001	DRC, SCI/FLD, TBC (KnE),				AVSI, BC, KBC (Kayin), UNICEF, WV,		TBC	SCI/FLD	FFH, KBC (Kayin), PSI, SCI/FLD, WHO, WV		CRS, DRC, IRC, WEI, DCA-CM (KSWDC)	SCI/FLD, WV		UNICEF,	NPA	DRC, NRC, SCI/FLD, SDI, UNICEF, WV, Tdh-L		DRC, IRC, SCI/FLD	23
Kayah	Mese	MMR002007					KBC (Kayin), UNICEF				BIMM, FFH, WHO		DCA-CM (CIDKP)				NPA	NRC			8
Kayah	Not Specified				UNFPA					NPA								NPA,			3
Kayah	Shadow	MMR002004	DRC				KBC (Kayin), UNICEF		TBC		FFH, KBC (Kayin), TBC (KnWO), WHO		IRC, DCA-CM (KSWDC)	DRC, UNHCR			NPA	DRC, NRC, UNHCR, CFM		IRC	15
Kayin	Hlaingbwe	MMR003002	SCI/FLD, TBC (KORD), UNDP			IOM, Malteser	KDN, KBC (Kayin), Malteser, SCI, SVS, UNICEF, UNHCR	NAG	TBC	ADRA, AAM, KHRG, KDN, SCI, SCI/FLD	ADRA, FFH, IRC, KDN, Malteser, PSI, SCI, SCI/FLD, TBC (KWO), UNICEF, UNHCR, WHO, WV, MalariaCons		ADRA, AAR, DCA-CM (CIDKP),	DCA, KDN, UNDP, WV		UNICEF	DCA	KHRG, NRC, SCI, SCI/FLD, UNHCR, TBC (KESAN)		ADRA, Malteser, PWJ, SVS, TBC (KORD)	30
Kayin	Hpa-An	MMR003001	HAI, SCI/FLD			HAI, IOM, Malteser, UN-Habitat	KDN, KBC (Kayin), Malteser, NRC, SCI, UNICEF, WV,	NAG	TBC	AAM, COM, KHRG, KDN, SCI, SCI/FLD, GDI	BIMM, HAI, IRC, KDN, Malteser, MNMA, PSI, SCI, SCI/FLD, TBC (KWO), UNICEF, WHO, WV, EMW, MalariaCons		DCA-CM (CIDKP), DCA-CM (KTWG)	BAJ, DCA, HAI, KDN, SCI, UNDP, WV, TBC (KESAN)		UNICEF	DCA, IOM, KDN, GDI	KHRG, NRC, SCI, SCI/FLD, UNICEF, UNHCR, WV, Tdh-L, GDI, TBC (KESAN)		Malteser	34
Kayin	Hpapun	MMR003003	HAI, SCI/FLD, TBC (KORD)			HAI	HAI, KBC (Kayin), UNICEF		TBC	AAM, KHRG, SCI/FLD	BIMM, HAI, SCI/FLD, TBC (KWO), UNICEF		DCA-CM (CIDKP)	DCA, KBC (Kayin)				HAI, KHRG, NRC, SCI/FLD, TBC (KESAN)		HAI, TBC (KORD)	14
Kayin	Kawkareik	MMR003006	HAI, MHDO, SCI/FLD			HAI	HAI, KBC (Kayin), SCI, SDC, UNICEF		TBC	AAM, KHRG, SCI, SCI/FLD, GDI	FFH, HAI, KBC (Kayin), PSI, SCI, SCI/FLD, TBC (KWO), UNICEF, WHO, PU-AMI, URC, MalariaCons		DCA-CM (CIDKP)	DCA, KDN, KBC (Kayin), UNDP		UNICEF	IOM, GDI	HAI, KHRG, NRC, SCI, SCI/FLD, GDI, TBC (KESAN)		HAI, UNICEF, UNHCR	26
Kayin	Kyainseikgyi	MMR003007	CWS, SCI/FLD				KDN, KBC (Kayin), SVS, UNICEF		TBC	AAM, KHRG, KDN, SCI/FLD, GDI	FFH, KDN, PSI, SCI/FLD, SDC, TBC (KWO), UNICEF, MAM, URC		DCA-CM (CIDKP)	DCA, KDN, KBC (Kayin), SCI/FLD		UNICEF	DCA, NPA, GDI	KHRG, NRC, SCI/FLD, GDI, TBC (KESAN)		SCI/FLD, SVS, TBC (KORD), UNHCR	23
Kayin	Myawaddy	MMR003005					KBC (Kayin), UNICEF		TBC	AAM, KHRG, GDI	IOM, PSI, SCI, TBC (KWO), UNICEF, WHO, MalariaCons			KBC (Kayin)			IOM, GDI	KHRG, NRC, UNICEF, Tdh-L, GDI, TBC (KESAN)			15
Kayin	Not Specified				UNFPA		PDO			DCA, NPA				DCA,			NPA	NPA,			5

State_Region	Township	Township pCode	Agriculture	CCCM	Coordina tion	Disaster Risk Reduction	Education	Environment	Food	Governance	Health	Logist ics	Mine Action	Non-agricultural livelihoods/ Infrastructure	Non- Food Items	Nutrition	Peace Building/ Conflict Prevention	Protection	Shelter	WASH	Count of Orgs.
Kayin	Thandaunggyi	MMR003004	HAI, SCI/FLD			HAI	HAI, KBC (Kayin), NRC, UNICEF		TBC	AAM, DM, KHRG, SCI/FLD, GDI	BIMM, DM, HAI, PSI, SCI/FLD, TBC (KWO), UNICEF, WHO, MAM		UNHCR	DCA, HAI, KDN, KBC (Kayin), SCI/FLD			DCA, NPA, GDI	HAI, KHRG, NRC, SCI/FLD, TLMM, UNICEF, Tdh-L, GDI, TBC (KESAN)		HAI, SCI/FLD, TBC (KORD), UNICEF	23
Mon	Bilin	MMR011010	FAO, TBC (KORD), WC			IOM, WC	KBC (Kayin), UNICEF		TBC	KHRG, PTE	IOM, PSI, TBC (KWO), UNICEF, WHO, WC, WV		DCA-CM (CIDKP)	KDN, WC		WC		KHRG, NRC, PTE, SCI, Tdh-L		TBC (KORD), UNHCR, WC	19
Mon	Chaungzon	MMR011003	UNDP				KBC (Kayin), UNICEF			PTE, SCI	PSI, UNICEF, WHO			UNDP				PTE, TLMM			8
Mon	Kyaikmaraw	MMR011002	CWS, FAO				KBC (Kayin), UNICEF			PTE	AFXB, IOM, PSI, TBC (KWO), UNICEF, WHO, MAM			SCI				PTE, Tdh-L			13
Mon	Kyaikto	MMR011009	WC			WC	KBC (Kayin), UNICEF			KHRG, PTE	AFXB, IOM, PSI, UNICEF, WHO, WC, MalariaCons			WC		UNICEF, WC		KHRG, NRC, PTE, Tdh-L, TBC (KESAN)		WC	13
Mon	Mawlamyine	MMR011001	FAO, HAI			HAI	AFXB, KDN, KBC (Kayin), UNICEF, WV,			COM, PTE, UNDP	AFXB, CARE, FHI 360, HAI, IHA, IOM, MSI, MNMA, PSI, UNICEF, WHO, WFP, WV, EMW, MalariaCons			HAI, SCI, UNDP		UNICEF	IOM, NPA	AFXB, PTE, Thingaha, UNICEF, UNHCR, WV, Tdh-L, NP,		MRCS	29
Mon	Mudon	MMR011005	FAO				UNICEF			PTE	AFXB, IOM, MNMA, PSI, UNICEF, WHO, MAM			KDN, SCI				PTE			11
Mon	Not Specified				UNFPA		PDO,			DCA, NPA							NPA	NPA			6
Mon	Paung	MMR011008					AFXB, UNICEF			PTE	AFXB, PSI, UNICEF, WHO, MAM, MalariaCons			UNDP		UNICEF		AFXB, PTE, SCI			9
Mon	Thanbyuzayat	MMR011004	SCI/FLD				KBC (Kayin), UNICEF, WV			PTE, SCI/FLD	IOM, PSI, SCI/FLD, UNICEF, WHO, WV, MAM, MalariaCons			KDN, UNDP, WV				PTE, SCI/FLD, UNICEF, WV, Tdh-L			13
Mon	Thaton	MMR011007	AFXB, WC			WC	AFXB, KBC (Kayin), UNICEF		AFXB, TBC	KHRG, PTE	BIMM, IHA, IOM, MSI, MNMA, PSI, TBC (KWO), UNICEF, WHO, WC		DCA-CM (CIDKP)	DCA, WC		UNICEF, WC	NPA	KHRG, NRC, PTE, SCI, TLMM, UNICEF, UNHCR, Tdh-L, TBC (KESAN)		AFXB, UNHCR, WC	24
Mon	Ye	MMR011006	FAO, SCI/FLD			IOM, UN-Habitat	KBC (Kayin), SDC, UNICEF			PTE, SCI/FLD	IOM, KDN, MSI, PSI, SCI/FLD, SDC, UNICEF, WHO, MAM			KDN			IOM	NRC, PTE, SCI/FLD, UNHCR, Tdh-L, TBC (HURFOM)		KDN	17
Shan (East)	Ho Tawng (Ho Tao)	MMR016320					UNICEF, WFP			PTE	Malteser							PTE		Malteser	4
Shan (East)	Kengtung	MMR016001	SWISSAID, WV				UNICEF, WV	SWISSAID		PTE	Malteser, MMA, PSI, UNICEF, WHO, WFP, WV			SWISSAID				PTE, SCI, SWISSAID, WV		Malteser, MRCS	11
Shan (East)	Mong Hpen	MMR016319					UNICEF, WFP			PTE	Malteser							PTE		Malteser	4
Shan (East)	Mong Kar	MMR016322					UNICEF, WFP			PTE	WHO, WFP							PTE			4
Shan (East)	Mong Pawk	MMR016321					UNICEF, WFP			PTE	Malteser							PTE		Malteser	4
Shan (East)	Monghpyak	MMR016010					UNICEF			PTE	PSI, WHO							PTE, SCI			5
Shan (East)	Monghsat	MMR016006					UNICEF		TBC	PTE	MMA, PSI, UNICEF, WHO							PTE			6
Shan (East)	Mongkhet	MMR016002					UNICEF			PTE	PSI, UNICEF, WHO							PTE			4
Shan (East)	Mongla	MMR016005					UNICEF			PTE	Malteser, PSI							PTE		Malteser	4
Shan (East)	Mongping	MMR016007					UNICEF			PTE	PSI, UNICEF, WHO							PTE			4
Shan (East)	Mongton	MMR016008					UNICEF		TBC	PTE	PSI, UNICEF, WHO							PTE			5
Shan (East)	Mongyang	MMR016003					UNICEF			PTE	Malteser, PSI, WHO							PTE			5
Shan (East)	Mongyawng	MMR016011					UNICEF			PTE	PSI, UNICEF, WHO							PTE, SCI			5
Shan (East)	Nam Hpai	MMR016323					UNICEF, WFP			PTE								PTE			3
Shan (East)	Not Specified				UNFPA					NPA	UNFPA										2
Shan (East)	Tachileik	MMR016009				MRCS	UNICEF, WV			PTE	Malteser, MANA, MMA, PSI, UNICEF, UNFPA, WHO, WFP, WV							PTE, SCI, UNICEF, WV		Malteser	12
Shan (South)	Hopong	MMR014003	FAO, SWISSAID, UNODC				UNICEF	SWISSAID		PTE	MMA, PSI, UNICEF, UNFPA, WHO			SWISSAID, UNDP			MC	NRC, PTE, PGK, SWISSAID			13
Shan (South)	Hsihseng	MMR014004	ADRA, FAO, SCI/FLD, SWISSAID				SAETENAR, UNICEF, WFP	SWISSAID	WFP	NPA, PTE, SCI/FLD	PSI, SCI/FLD, UNICEF, UNFPA, WHO			SWISSAID		WFP		NRC, PTE, SCI/FLD, SWISSAID		ADRA	13
Shan (South)	Kalaw	MMR014005					AVSI, KBC (Kayin), UNICEF	IID, UNDP		PTE	UNION, PGK, PSI, UNFPA, WHO			PACT			MC, NPA	PTE, PGK, Tdh-L			15
Shan (South)	Kunhing	MMR014014					UNICEF			NPA, PTE	PSI, WHO							PTE			5
Shan (South)	Kyethi	MMR014015					UNICEF			PTE	PSI, WHO							PTE			4
Shan (South)	Laihka	MMR014012					AVSI, UNICEF			PTE	PSI, WHO							PTE			5
Shan (South)	Langkho	MMR014018					UNICEF			NPA, PTE	PSI, UNICEF, WHO							PTE			5

State_Region	Township	Township pCode	Agriculture	CCCM	Coordina tion	Disaster Risk Reduction	Education	Environment	Food	Governance	Health	Logist ics	Mine Action	Non-agricultural livelihoods/ Infrastructure	Non-Food Items	Nutrition	Peace Building/ Conflict Prevention	Protection	Shelter	WASH	Count of Orgs.
Shan (South)	Lawksawk	MMR014008	FAO				SAETENAR, UNICEF			PTE	MMA, PSI, WHO							PTE			7
Shan (South)	Loilen	MMR014011	UNODC				AVSI, UNICEF			PTE	PSI, UNFPA, WHO							PTE			7
Shan (South)	Mawkmai	MMR014020					UNICEF			PTE	PSI, WHO							PTE			4
Shan (South)	Monghsu	MMR014017					PDO, UNICEF			PTE	PSI, WHO							PTE, Tdh-L			6
Shan (South)	Mongkaing	MMR014016				MCS	UNICEF			PTE	PSI			MCS				PTE		MCS	4
Shan (South)	Mongnai	MMR014019					AVSI, UNICEF			PTE	PSI, UNICEF, WHO							PTE			5
Shan (South)	Mongpan	MMR014021					UNICEF, WFP		TBC	PTE	PSI, WHO					WFP		PTE			6
Shan (South)	Nansang	MMR014013					UNICEF			PTE	MMA, PSI, UNFPA							PTE			5
Shan (South)	Not Specified				UNFPA					NPA								NPA,			3
Shan (South)	Nyaungshwe	MMR014002	ADRA, FAO, UNDP		IID	MCS	KBC (Kayin), UNICEF, WFP	IID, MERN, UNDP	WFP	DCA, PTE, SCI	PSI, WHO			DCA, MCS, PACT				PTE, TDH NL		ADRA, MCS	16
Shan (South)	Pekon	MMR014010	DM, SCI/FLD				AVSI, KBC (Kayin), SAETENAR, UNICEF, WFP		WFP	DM, PTE, SCI, SCI/FLD	DM, PSI, SCI/FLD, UNICEF, UNFPA, WHO							PTE, SCI/FLD, UNICEF		UN- Habitat	13
Shan (South)	Pindaya	MMR014006	NPA, SWISSAID				SAETENAR, UNICEF	SWISSAID, UNDP		PTE	PSI, UNICEF, UNFPA, WHO			NPA, PACT, SWISSAID				PTE, PGK, SWISSAID		NPA, UN- Habitat	12
Shan (South)	Pinlaung	MMR014009					AVSI, KBC (Kayin), UNICEF			DCA, PTE	PSI, WHO			PACT				NRC, PTE		UN- Habitat	10
Shan (South)	Taunggyi	MMR014001	FAO, SWISSAID				AVSI, KDN, KBC (Kayin), PDO, SAETENAR, UNICEF	SWISSAID, UNDP		COM, NPA, PTE, GDI	UNION, MMA, PGK, PSI, UNICEF, UNFPA, WHO, WFP, EMW			SWISSAID		UNICEF	MC, NPA	AAM, NYWCA, NRC, PTE, SWISSAID, Thingaha, UNICEF, TDH NL, Tdh-L, GDI			28
Shan (South)	Ywangan	MMR014007					UNICEF	MERN		PTE	AFXB, PSI, UNFPA, WHO			PACT				PTE			8
Tanintharyi	Bokpyin	MMR006010					KBC (Kayin), NRC, UNICEF				FFH, MSF-CH, PSI, UNICEF, WHO										7
Tanintharyi	Dawei	MMR006001					KDN, KBC (Kayin), NRC, UNICEF, WV,		TBC	COM, TBC (Kwekalu)	FFH, IHA, MSF-CH, PSI, UNICEF, WHO, WFP, WV, CFM, EMW			KDN,		UNICEF	KDN,	AAM, NRC, SCI, UNICEF, WV, CFM, Tdh-L, TBC (KESAN)			23
Tanintharyi	Kawthoung	MMR006009					UNICEF, WV				MSF-CH, PSI, UNICEF, WHO, WV					UNICEF	IOM	UNICEF, WV			6
Tanintharyi	Kyunsu	MMR006006				AAM, UN- Habitat	KBC (Kayin), UNICEF			MC	MSF-CH, PSI, WHO										8
Tanintharyi	Launglon	MMR006002					UNICEF			WV	MSF-CH, PSI, UNICEF, WHO, WV							WV			5
Tanintharyi	Myeik	MMR006005	SCI/FLD,				KBC (Kayin), NRC, UNICEF, WV		TBC	SCI/FLD	FFH, KDN, MSF-CH, PSI, SCI/FLD, WHO, WV, EMW			KDN, KBC (Kayin),		UNICEF		SCI/FLD, WV, Tdh-L		KDN, UNHCR, WV	15
Tanintharyi	Not Specified				UNFPA			DCA		DCA, NPA				DCA,			NPA	NPA,			4
Tanintharyi	Palaw	MMR006007					KBC (Kayin), UNICEF, WV		TBC		FFH, KDN, MSF-CH, PSI, WHO, WV			KDN				AFXB, NRC	NRC	KDN, NRC, UNHCR	13
Tanintharyi	Tanintharyi	MMR006008	SCI/FLD				KBC (Kayin), UNICEF, WV		TBC	KHRG, SCI/FLD	FFH, KDN, MSF-CH, PSI, SCI/FLD, TBC (KWO), UNICEF, UNHCR, WHO, WV			SCI/FLD		UNICEF		KHRG, SCI/FLD, WV, TBC (KESAN)	NRC	KDN, NRC, SCI/FLD	15
Tanintharyi	Thayetchaung	MMR006003					KBC (Kayin), UNICEF				FFH, KDN, MSF-CH, PSI, TBC (KWO), WHO, WV			KDN, KBC (Kayin)				AFXB, NRC, SCI, WV, TBC (KESAN)		KDN	13
Tanintharyi	Yebyu	MMR006004					KBC (Kayin), UNICEF		TBC		FFH, MSF-CH, PSI, TBC (KWO), WHO			DCA, KBC (Kayin)				NRC, SCI, TBC (HURFOM), TBC (KESAN)			13

South East of Myanmar - Summary of Organizations' Sub Sectors Interventions

Projects Under Implementation as of April 28, 2014

Sector	Sub Sector	No. of Projects	No. of Organizations	No. of Townships	No. of Village Tract/ Town	No. of Village/Ward
Agriculture	Agricultural Alternative Development	4	3	7	43	119
	Agricultural Assessment	1	1	3	28	44
	Agricultural Extension	4	4	6	19	55
	Agricultural Inputs	9	7	15	84	167
	Agricultural Research	3	3	5	37	68
	Agriculture Development	9	8	20	59	125
	Agriculture Water Resources	1	1	2	2	
	Capacity Building (Agricultural Livelihood)	4	4	8	52	95
	Forestry	2	2	2	8	10
	Livestock and poultry	3	3	5	12	31
	Pest / disease control	1	1	1	3	9
	Plant Production	5	5	15	16	30
	Provision of paddy plantation & cultivation	5	5	21	82	114
Sector Total (AGRICULTURE)		30	21	41	210	469
Coordination	Not Specified	1	1	1		
	Information Management	1	1			
Sector Total (COORDINATION)		2	2	1		
Disaster Risk Reduction	Community based Disaster Preparedness and Risk Reduction	7	7	10	75	102
	Policy and institutional development	1	1	2		
	Preparedness and Response Programs	2	1	2		
	Public Awareness, Education and Training	3	3	8	46	78
Sector Total (DISASTER RISK REDUCTION)		12	9	17	120	179
Education	Early Childhood Development	13	6	55	422	785
	Food for Education	2	1	9	14	47
	Non-Formal Education	18	10	83	35	53
	Quality Basic Education/Formal Education	16	12	42	74	131
Sector Total (EDUCATION)		45	21	84	504	989
Environment		7	6	11	46	93
Sector Total (ENVIRONMENT)		7	6	11	46	93

South East of Myanmar - Summary of Organizations' Sub Sectors Interventions

Projects Under Implementation as of April 28, 2014

Sector	Sub Sector	No. of Projects	No. of Organizations	No. of Townships	No. of Village Tract/ Town	No. of Village/Ward
Food	Food + Cash For Work	1	1	2	9	11
	Food For Work	1	1	1	2	
	General Food Distribution	5	4	28	82	29
Sector Total (FOOD)		7	4	30	93	40
Governance	Access to Justice	2	2	7	5	5
	Economic and Development policy/planning	2	2	8	15	14
	Elections	1	1	6	6	
	Human Rights Monitoring	1	1	16		
	Human Rights Promotion and Advocacy	8	6	32	33	53
	Institutional Strengthening and Public Administration Reform	2	2	2	20	119
	Media and flow of Information	1	1	1		
	Monitoring & Reporting Mechanism on GCRV	1	1	16		
	Rule of Law	1	1	6		
	Strengthening civil society	20	15	83	122	172
Sector Total (GOVERNANCE)		33	18	84	180	358
Health	Basic Health Care	19	11	21	133	318
	Community Home Based Care	3	3	5	40	61
	Control of Communicable Diseases	5	5	45	114	190
	Coordination	1	1	3	23	40
	Disease surveillance	2	2	10		
	Harm Reduction	1	1	1		
	Health Assessment	3	2	3	7	20
	Health Education	13	7	28	345	945
	HIV/AIDS Programme	28	20	79	196	288
	Malaria Programme	19	14	80	702	1339
	Reproductive Health Care	16	11	53	558	966
	Revitalization of existing HS - HR	2	3	9	46	64
	Revitalization of existing HS - Infrastructure	4	3	4	8	8
	Revitalization of existing HS- Equipment&Supplies	1	1	8		
	TB Programme	11	9	49	424	592
	Vector control methods	1	1	3	26	39
	Women and Child Health	19	11	53	147	306
Sector Total (HEALTH)		117	42	84	1047	2666

South East of Myanmar - Summary of Organizations' Sub Sectors Interventions Projects Under Implementation as of April 28, 2014

Sector	Sub Sector	No. of Projects	No. of Organizations	No. of Townships	No. of Village Tract/ Town	No. of Village/Ward
MineAction	Advocacy	1	1	1		
	Mine-Risk Education	8	9	15	45	107
	Victim Assistance	5	4	7	12	17
Sector Total (MINE ACTION)		13	12	17	51	112
Non- Agricultural Livelihoods/ Infrastructure	Cash for work	1	1	9	72	127
	Income Generation	16	12	37	158	310
	Micro-Finance	6	7	18	177	731
	Rehabilitation-Community Infrastructure & Facility	7	5	22	43	73
	Social Recovery	6	3	26	123	204
	Vocational Training	7	6	20	110	199
Sector Total (NON-AGRICULTURAL LIVELIHOODS/ INFRASTRUCTURE)		34	21	55	373	1081
Nutrition	Inpatient Therapeutic Programme (ITP)	1	1	7		
	Monitoring Breast Milk Substitutes	1	1	5		
	Multiple Micronutrient Supplementation	3	3	17	37	61
	Nutrition Assessment with W/H	1	1	3	28	44
	Nutrition Survey	1	1	3	26	42
	Outpatient Therapeutic Programme (OTP)	1	1	4		
	Supplementary Feeding	2	2	4	26	42
Sector Total (NUTRITION)		7	4	25	37	61
Peace Building/ Conflict Prevention	Conflict transformation and Peacebuilding	12	7	30	19	20
	Customs and border control	1	1	2		
	Support for durable solutions for returnees	2	1	4	4	13
Sector Total (PEACE BUILDING/ CONFLICT PREVENTION)		15	8	32	23	33

South East of Myanmar - Summary of Organizations' Sub Sectors Interventions

Projects Under Implementation as of April 28, 2014

Sector	Sub Sector	No. of Projects	No. of Organizations	No. of Townships	No. of Village Tract/ Town	No. of Village/Ward
Protection	Awareness Raising on Protection Issues	7	7	22	27	48
	Child Protection	16	6	39	219	366
	Child Protection in Emergencies	1	1	1		
	Civil Documentation	1	1	26	329	922
	Community Based Protection (Groups)	3	2	2	10	15
	Family Tracing	1	1	25		
	Gender Based Violence	5	4	5	14	41
	Housing, Land and Property (IDP, returnee)	2	3	19	22	
	Human Trafficking	2	2	5	30	48
	Persons with Disabilities	1	1	5	42	67
	Promoting Gender Equality and Empowerment of Women	9	9	79	94	133
	Protection Assessment	1	1	1	1	
	Vulnerable Populations in Emergencies	1	1	3	5	12
Sector Total (PROTECTION)		45	28	84	593	1472
Shelter	Permanent Shelter	1	1	2	5	9
Sector Total (SHELTER)		1	1	2	5	9
WASH	Construction & Rehabilitation -Sanitation Facility	9	9	16	61	153
	Construction & Rehabilitation -Water Facility	10	9	17	125	260
	Environmental Sanitation	2	2	3	10	31
	Hygiene Promotion	8	8	14	66	91
	Safe Water Supply	7	6	14	45	98
Sector Total (WASH)		27	22	32	224	500
Grand Total (All Sectors)		327 (47%)	104 (60%)	84 (100%)	1614 (65%)	5275 (30%)
		(% of Total in Countrywide)		(% of Total in South East of Myanmar)		