

Overview of the Oct. 2013 3W for SOUTH EAST of Myanmar

(Bago (East), Kayah, Kayin, Mon, Shan (East), Shan (South) and Tanintharyi)

The MIMU 3W gathers inputs from participating agencies on Who is doing What, Where in Myanmar. It is currently conducted every 6 months.

159 agencies participated in the October 2013 3W, providing information on their activities in 18 sectors and 133 sub-sectors which have been defined by technical/sector working groups. There is still likely to be under-reporting of the specific activities of field-based local NGOs and CBOs.

This overview of the 3W results in South East Myanmar covers activities reported in Bago East, Kayah, Kayin, Mon, Shan East, Shan South and Tanintharyi.

The following tables and chart describe projects under implementation as of October 23, 2013. Further information on proposed and recently completed projects is available from the 3W dataset, published on the MIMU website.

1. Active Organizations

A total of 80 organizations reported projects under implementation across the SE. The majority are NGOs (65 agencies, 7 of whom are border-based). In terms of project spread, 41 agencies reported activities in Shan South, followed by Mon (37 agencies), Kayin (35), Kayah (32) Bago East (27), Tanintharyi (26), and a lower reported concentration in Shan East (13 agencies).

Org. Type	INGO	NNGO	UN	Red Cross	CBO*	Donor	Embassy	BBO*	Total
Countrywide	74	56	13	3	3	2	1	7	159
South East	41	17	11	1	1	2		7	80
BBO* - Border-based Organization					CBO* - Community Based Organization				

2. Projects by Sector

265 projects were reported in 16 sectors, making up 40% of the total projects reported to the 3W.

- Health is the most widespread intervention with 39 agencies reportedly implementing some form of health activities through 103 projects in 5,585 villages across 85 townships. The majority are Health Education and Malaria Programme activities. Health activities are found in all the S/R but most concentrated in Mon and Kayin
- Protection is the second most commonly reported sector with activities by 17 agencies in 1,368 villages. These consisted mainly of activities around Civil Documentation in 895 villages, Child Protection (319 villages) and IDP/returnee-focused Housing, Land and Property activities (248 villages). Protection agencies are more numerous in Kayah, Mon and Shan South.
- Non-Agricultural Livelihoods and Infrastructure is the third main sector is with 15 agencies implementing 30 projects reaching 1,273 villages in 53 townships. These are mainly Microfinance interventions (997 villages), followed by income Generation activities (350 villages), Social Recovery (247), Vocational Training (205) and Cash-for-work interventions (133). Non-Agricultural Livelihoods activities are more numerous in Kayin, Mon and Shan South, with very few reported in Shan East.

Other main sectors are:

- Education - under implementation in 774 villages by 20 organizations, most frequently ECD (354 villages), support to the Quality Basic Education (262), followed by Food for Education (113) and NFE support (105). Agency activities are more concentrated in Mon and Kayin. The extent to which there is overlap in these activities at village level can be explored through a more detailed analysis of the 3W village level dataset.

Overview of the Oct. 2013 3W for SOUTH EAST of Myanmar

(Bago (East), Kayah, Kayin, Mon, Shan (East), Shan (South) and Tanintharyi)

- WASH - 18 organizations in 690 villages, most frequently focused in Construction/Rehabilitation of Water Facilities (378), Hygiene Promotion (306) and Construction/Rehabilitation of Sanitation Facilities (209).
- Agriculture – 18 organizations in 430 villages in 27 townships , the main subsectors being Livestock and Poultry, Capacity Building, Agriculture Development and Agricultural Extension.

Among the newer sectors included in the 3W to capture work in emerging areas:

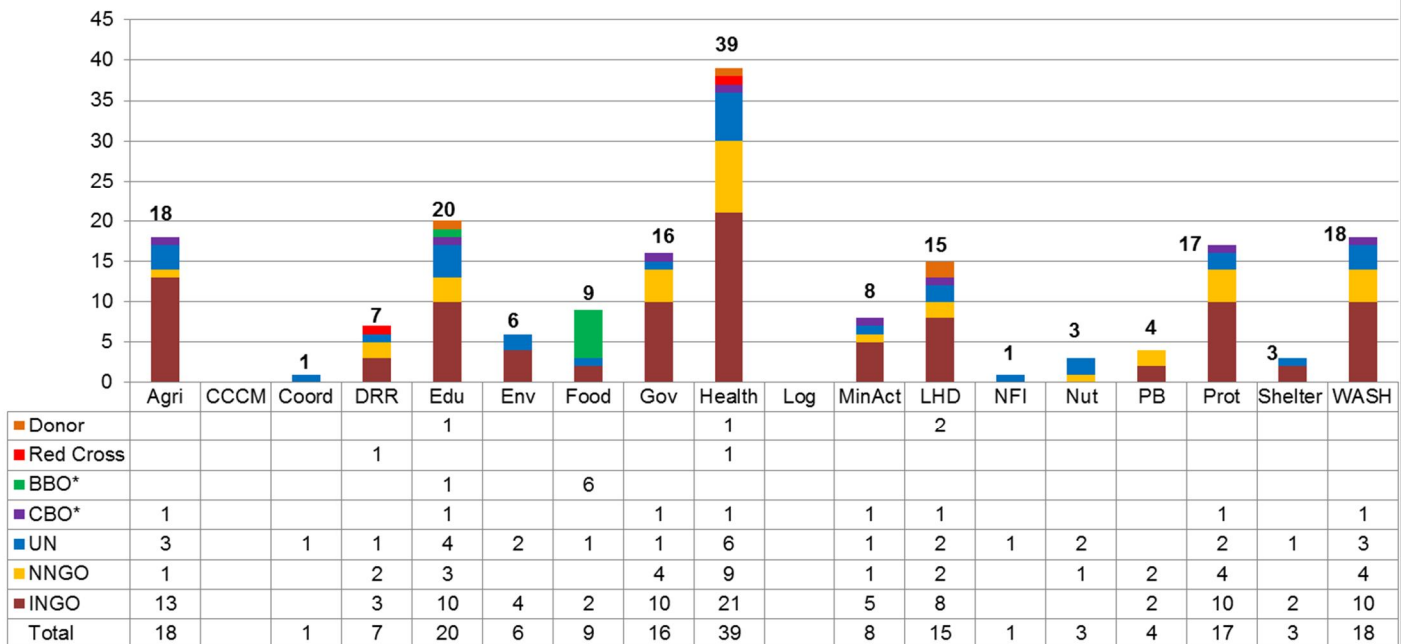
- Governance activities are reported by 16 agencies reaching 152 villages, mostly focused on Strengthening Civil Society.
- Peacebuilding/Conflict Prevention activities reported by 4 agencies reaching 47 villages with activities in Conflict Transformation and Peacebuilding (34) and Support for Durable Solutions for Returnees (13).
- Mine Action activities reaching 128 villages, mostly in Mine Risk Education.

Summary Reports by Sector in SOUTH EAST of Myanmar with Projects Under Implementation as of 23 October 2013					
Sector	No. of Projects	No. of Organizations	No. of Township	No. of Village Tracts/Towns	No. of Villages/ Wards
Agriculture	24	18	27	156	430
CCCM					
Coordination	2	1	6		
Disaster Risk Reduction	8	7	10	64	92
Education	47	20	63	404	774
Environment	7	6	9	30	85
Food	11	9	17	55	37
Governance	30	16	78	101	152
Health	103	39	85	1,294	5,585
Logistics					
Mine Action	11	8	23	83	128
Non-Agricultural Livelihoods/ Infrastructure	30	15	53	365	1,273
Non-Food Items	4	1	10	40	46
Nutrition	4	3	23	9	13
Peace Building/ Conflict Prevention	16	4	29	32	47
Protection	39	17	83	504	1,368
Shelter	3	3	26	7	8
WASH	24	18	44	360	690
Grand Total (All Sectors)	265 (40%)	80 (50%)	84 (100%)	1,583 (64%)	7,168 (43%)

Overview of the Oct. 2013 3W for SOUTH EAST of Myanmar

(Bago (East), Kayah, Kayin, Mon, Shan (East), Shan (South) and Tanintharyi)

No. of Organizations by Sector in South East of Myanmar



No. of Organizations by Sector by type of Organization (as of October 23, 2013)

Sector	INGO	NNGO	UN	CBO	BBO	Donor	Red Cross	Total
Agriculture	13	1	3	1				18
CCCM								
Coordination			1					1
Disaster Risk Reduction	3	2	1				1	7
Education	10	3	4	1	1	1		20
Environment	4		2					6
Food	2		1		6			9
Governance	10	4	1	1				16
Health	21	9	6	1		1	1	39
Logistics								
Mine Action	5	1	1	1				8
Non-Agricultural LH/ Infrastructure	8	2	2	1		2		15
Non-Food Items			1					1
Nutrition		1	2					3
Peace Building/ Conflict Prevention	2	2						4
Protection	10	4	2	1				17
Shelter	2		1					3
WASH	10	4	3	1				18

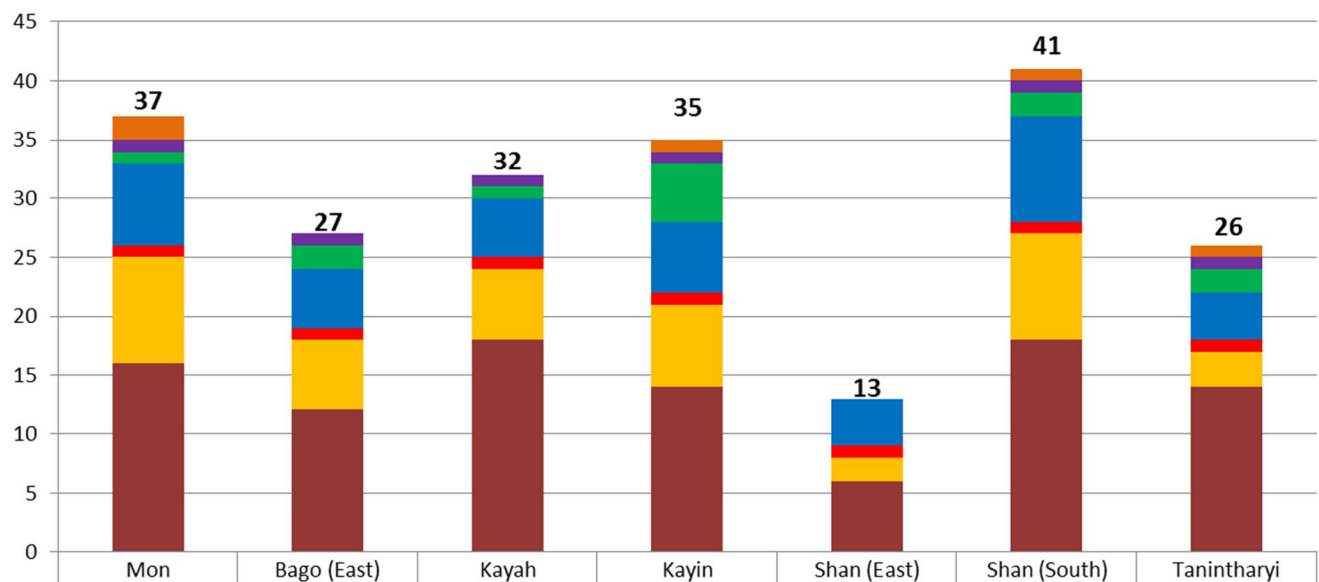
Overview of the Oct. 2013 3W for SOUTH EAST of Myanmar

(Bago (East), Kayah, Kayin, Mon, Shan (East), Shan (South) and Tanintharyi)

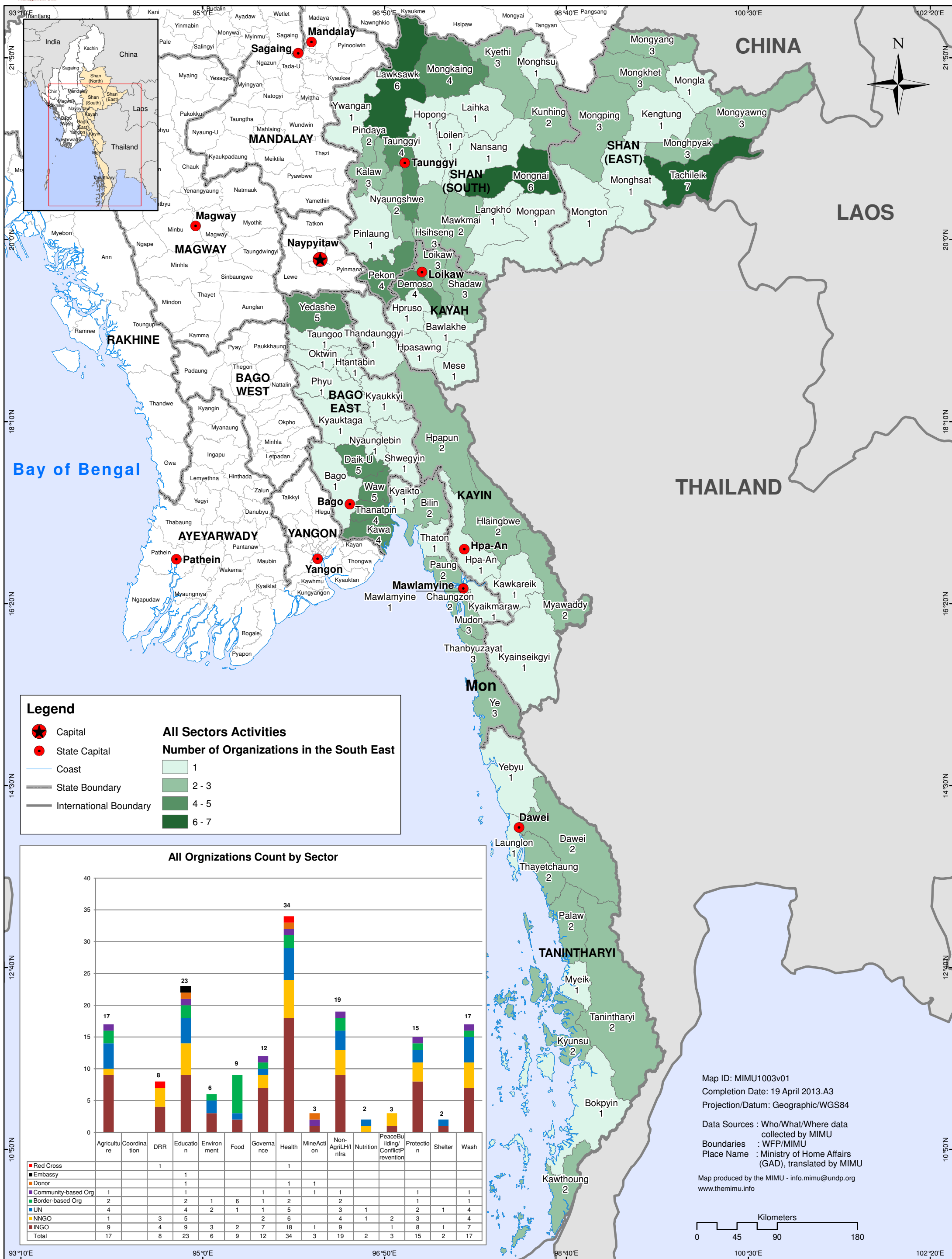
No. of Organizations by Sector and State (as of October 23, 2013)

State/ Region	Agriculture	CCCM	Coordination	Disaster Risk Reduction	Education	Environment	Food	Governance	Health	Logistics	Mine Action	Non-agricultural livelihoods/ Infrastructure	Non-Food Items	Nutrition	Peace Building/ Conflict Prevention	Protection	Shelter	WASH	S/R Total
Bago (East)	3		1	1	6		3	4	13		3	4		1	3	8	1	1	27
Kayah	4		1		8		1	6	10		5	5	1	2	2	10	1	6	32
Kayin	5		1	2	12		4	8	20		6	9	1	1	3	7	3	6	35
Mon	3		1	2	11		1	6	21		1	9		1	1	10	1	6	37
Shan (East)	2			1	2	1		2	9			1			1	5		1	13
Shan (South)	9			1	9	4	3	6	14		1	8		2	2	10		6	41
Tanintharyi	2		1	2	8	2	1	3	15		2	6	1	1	2	7	2	5	26
Sector Total	18		1	7	20	6	9	16	39		8	15	1	3	4	17	3	18	

No. of Organizations by State/Region in South East of Myanmar



Donor	2			1		1	1
CBO	1	1	1	1		1	1
BBO	1	2	1	5		2	2
UN	7	5	5	6	4	9	4
Red Cross	1	1	1	1	1	1	1
NNGO	9	6	6	7	2	9	3
INGO	16	12	18	14	6	18	14
Grand Total	37	27	32	35	13	41	26



Who/What/Where - South East of Myanmar - Organization Presence at Township Level by Sector
as of 11 April 2013 (Projects Under Implementation)

State/ Region	Township	Township Code	Agriculture	Coordination	Disaster_Risk_Reduction	Education	Environment	Food	Governance	Health	Logistics	Mine_Action	Non_agricultural_livelihoods_Infrastructure	Nutrition	Peace_Building_Conflict_Prevention	Protection	Shelter	Wash	Count of Organizations
Bago (East)	Bago	MMR007001	FAO		CWS	KDN, PDO, UNICEF, YF			PTE	MSI, PSI, UNICEF, UNFPA, MRCS&IFRC						SC, Tdh-L, PTE			13
Bago (East)	Daik-U	MMR007007				PDO, UNICEF			PTE	PSI, UNFPA						PTE			5
Bago (East)	Htantabin	MMR007014			KMSS	UNICEF			KHRG, PTE	PSI						KHRG, PTE		UNICEF	5
Bago (East)	Kawa	MMR007003				PDO, UNICEF			PTE	PSI						PTE			4
Bago (East)	Kyaukkyi	MMR007011				UNICEF		TBC (CIDKP), TBC (KORD)	KHRG, PTE	UNFPA, TBC (KWO), MRCS&IFRC			KDN			KHRG, PTE			9
Bago (East)	Kyauktaga	MMR007006				PDO, UNICEF, YF			PTE	PSI, UNICEF						PTE			5
Bago (East)	Not Specified								NPA				ACTED	UNICEF	NPA				3
Bago (East)	Nyaunglebin	MMR007005				PDO, UNICEF			KHRG, PTE	PSI, UNFPA			KDN			KHRG, Tdh-L, PTE		UNICEF	8
Bago (East)	Oktwin	MMR007013	SCI/FLD		CWS	PDO, UNICEF, SCI/FLD			SCI/FLD, PTE	PSI, UNICEF, UNFPA, SCI/FLD		SCI/FLD	Metta, SCI/FLD			SCI/FLD, PTE		UNICEF, SCI/FLD	8
Bago (East)	Phyu	MMR007012				UNICEF			NPA, PTE	PSI, UNFPA				UNICEF		PTE			5
Bago (East)	Shwegyin	MMR007008	KORD			PDO, UNICEF			KHRG, PTE	AFXB, PSI, UNFPA, TBC (KWO)			KORD, RMO			KHRG, Tdh-L, PTE			11
Bago (East)	Taungoo	MMR007009	SCI/FLD		CWS	KDN, PDO, UNICEF, SCI/FLD			KHRG, NPA, SCI/FLD, PTE	PSI, UNICEF, UNFPA, SCI/FLD		SCI/FLD	Metta, SCI/FLD	UNICEF	KDN, NPA	KHRG, SC, TLMI, Tdh-L, SCI/FLD, PTE	SCI/FLD		14
Bago (East)	Thanatpin	MMR007002				UNICEF			PTE	PSI, UNFPA						PTE			4
Bago (East)	Waw	MMR007004				PDO, UNICEF			PTE	PSI, UNICEF, UNFPA						PTE			5
Bago (East)	Yedashe	MMR007010				UNICEF			PTE	PSI, UNICEF, UNFPA			Metta	UNICEF		PTE			5
Kayah	Bawlake	MMR002005							MC	PSI, UNICEF, FFH						NRC			5
Kayah	Demoso	MMR002002	ACF, Metta, NPA, SCI/FLD			AVSI, UNICEF, YF, SCI/FLD			MC, AAM, SCI/FLD	CARE, PSI, SDI, UNICEF, FFH, SCI/FLD, TBC (KnWO)	SCI/FLD	CARE, Metta, SCI/FLD	SDI		CARE, Metta, NRC, Thingaha, SCI/FLD		ACF, UNICEF, SCI/FLD	16	
Kayah	Hpasawng	MMR002006						TBC (KnSWDC)	MC	PSI, UNICEF						NRC			5
Kayah	Hpruso	MMR002003	ACF, NPA, SCI/FLD			AVSI, UNICEF, YF, SCI/FLD		TBC (KnSWDC)	MC, AAM, SCI/FLD	ACF, PSI, UNICEF, FFH, SCI/FLD	SCI/FLD	Metta, SCI/FLD	SDI		NRC, SCI/FLD		ACF, UNICEF, SCI/FLD	14	
Kayah	Loikaw	MMR002001	CARITAS-Thai, SCI/FLD			AVSI, CARITAS-Thai, UNICEF, WV, YF, SCI/FLD	TBC (KnE)		MC, NPA, UNDP, SCI/FLD	PSI, FFH, SCI/FLD	SCI/FLD	SCI/FLD			NRC, Tdh-L, UNICEF, UNHCR, SCI/FLD		SCI/FLD	15	
Kayah	Mese	MMR002007							MC	PSI						NRC			3
Kayah	Not Specified				CARE							SDC		UNICEF	NPA				4
Kayah	Shadaw	MMR002004						TBC (KnSWDC)	MC, AAM	PSI, FFH				SDI		NRC, SCI/FLD			8
Kayin	Hlaingbwe	MMR003002	ADRA, SCI/FLD, TBC (KORD)		CWS	ADRA, KDN, NRC, SC, SDC, UNICEF, WV, SCI/FLD			ADRA, KHRG, KDN, SC, SCI/FLD	ADRA, CDA, KDN, PSI, SC, SDC, UNICEF, SCI/FLD, TBC (KWO)		ADRA, SCI/FLD	KDN, SC, SCI/FLD			KHRG, NRC, SCI/FLD		ADRA, Malteser, UNHCR, SCI/FLD	16
Kayin	Hpa-An	MMR003001	ADRA, SCI/FLD		CWS	ADRA, BC, KDN, NRC, UNICEF, SCI/FLD			ADRA, KHRG, KDN, NPA, UNDP, SCI/FLD	ADRA, BIM, CDA, KDN, MANA, PSI, SC, UNICEF, UNFPA, SCI/FLD, TBC (KWO)		SCI/FLD	KDN, SC, SCI/FLD	UNICEF	KDN	KHRG, NRC, Tdh-L, UNICEF, SCI/FLD	CDA, KORD, Malteser, UNHCR, SCI/FLD	21	
Kayin	Hpapun	MMR003003	KORD, SCI/FLD, TBC (KORD)			ADRA, UNICEF, SCI/FLD		TBC (KORD), TBC	KHRG, SCI/FLD	ADRA, PSI, UNICEF, SCI/FLD, TBC (KWO)		SCI/FLD	KORD, SCI/FLD, TBC (KORD)			KHRG, NRC, SCI/FLD	SCI/FLD		10
Kayin	Kawkareik	MMR003006	SCI/FLD			MNEC, NRC, SC, SDC, UNICEF, SCI/FLD		TBC (CIDKP)	KHRG, SC, SCI/FLD	CDA, PSI, SC, UNICEF, FFH, SCI/FLD, TBC (KWO)		SCI/FLD	KORD, KDN, SC, SCI/FLD			KHRG, NRC, SCI/FLD	UNICEF, UNHCR, SCI/FLD	15	
Kayin	Kyainseikgyi	MMR003007	SCI/FLD, TBC (KORD)			ADRA, KDN, MNEC, UNICEF, SCI/FLD		TBC (CIDKP), TBC (MRDC)	KHRG, KDN, SCI/FLD	KDN, PSI, UNICEF, SCI/FLD, TBC (KWO)		SCI/FLD	KDN, SCI/FLD, TBC (KORD)			KHRG, NRC, SCI/FLD	SCI/FLD		12
Kayin	Myawaddy	MMR003005				ADRA, UNICEF		TBC (CIDKP)	KHRG	IOM, PSI, SC, UNICEF, TBC (KWO)						KHRG, NRC, UNICEF			9
Kayin	Not Specified					PDO							UNHCR	UNICEF	NPA				4
Kayin	Thandaunggyi	MMR003004	HAI, Metta, SCI/FLD			Metta, UNICEF, SCI/FLD, KNGY		TBC (KORD)	KHRG, NPA, SCI/FLD	HAI, PSI, SC, UNICEF, SCI/FLD, TBC (KWO)		SCI/FLD	HAI, KDN, Metta, SCI/FLD			KHRG, NRC, Tdh-L, UNICEF, SCI/FLD	NRC	SCI/FLD	14
Mon	Bilin	MMR011010	FAO, KORD, TBC (KORD)			ADRA, UNICEF, UNHCR			KHRG, UNDP, PTE	MRCS & IFRC, IOM, PSI, UNICEF, UNHCR, WC, WFP, TBC (KWO)			KDN			KHRG, UNHCR, PTE		UNHCR, WC	16
Mon	Chaungzon	MMR011003	NPA		CWS	UNICEF, YF			PTE	MRCS & IFRC, PSI, UNICEF			Metta			SC, TLMI, PTE			10
Mon	Kyaikmaraw	MMR011002	FAO, NPA			ADRA, MNEC, UNICEF, UNHCR, YF			UNDP, PTE	AFXB, IOM, PSI, UNICEF, UNHCR, WFP, TBC (KWO)			Metta, UNHCR			UNHCR, PTE	UNHCR	UNHCR	15
Mon	Kyaikto	MMR011009				UNICEF, UNHCR			KHRG, UNDP, PTE	MRCS & IFRC, AFXB, PSI, UNICEF, UNHCR, WC						KHRG, Tdh-L, UNHCR, PTE	UNHCR	UNHCR, WC	10
Mon	Mawlamyine	MMR011001	FAO			AFXB, CWS, KDN, MNEC, UNICEF, WV			NPA, PTE	MRCS & IFRC, AFXB, CARE, IHA, IOM, MSI, PSI, UNICEF, WFP			UNHCR		NPA	AFXB, Tdh-L, Thingaha, UNICEF, UNHCR, PTE		CDA	20
Mon	Mudon	MMR011005	FAO, NPA			MNEC, UNICEF, UNHCR, YF			PTE	AFXB, BIM, CARE, IOM, PSI, UNICEF, UNHCR, WFP			KDN, Metta			UNHCR, PTE		UNHCR	15
Mon	Not Specified				CARE	PDO							ACTED, UNHCR	UNICEF	NPA				6
Mon	Paung	MMR011008	NPA			AFXB, UNICEF			PTE	AFXB, PSI, UNICEF			Metta			AFXB, UNHCR, PTE		UNHCR	7
Mon	Thanbyuzayat	MMR011004	NPA, SCI/FLD		WV	MNEC, UNICEF, UNHCR, WV, YF, SCI/FLD			SCI/FLD, PTE	MRCS & IFRC, IHA, IOM, PSI, UNICEF, UNHCR, WFP, SCI/FLD	SCI/FLD	KDN, Metta, SCI/FLD				Tdh-L, UNICEF, UNHCR, SCI/FLD, PTE		UNHCR, SCI/FLD	16
Mon	Thaton	MMR011007	AFXB			AFXB, UNICEF, UNHCR		AFXB	KHRG, PTE	MRCS & IFRC, BIM, MSI, PSI, UNICEF, UNHCR, WC, TBC (KWO)			UNHCR		NPA	KHRG, TLMI, Tdh-L, UNICEF, UNHCR, PTE		AFXB, UNHCR, WC	14
Mon	Ye	MMR011006	FAO, SCI/FLD			MNEC, SDC, UNICEF, UNHCR, YF, SCI/FLD			NPA, SCI/FLD, PTE	MRCS & IFRC, CARE, IOM, KDN, MSI, PSI, SDC, UNICEF, WFP, SCI/FLD	SCI/FLD	KDN, UNHCR, SCI/FLD				Tdh-L, UNHCR, SCI/FLD, PTE		KDN, UNHCR, SCI/FLD	17
Shan (East)	Ho Tawng (Ho Tao)	MMR016320							PTE	Malteser						PTE		Malteser	2
Shan (East)	Kengtung	MMR016001	SWISSAID, WV			UNICEF,													

South East of Myanmar - Summary of Organizations' Sub Sectors Interventions Projects Under Implementation as of 23 October 2013

Sector	Sub Sector	No. of Projects	No. of Organizations	No. of Townships	No. of Village Tracts/Towns	No. of Villages/Wards
Agriculture	Agricultural Alternative Development	3	2	4	15	75
	Agricultural Extension	5	4	5	20	63
	Agricultural Inputs	8	8	11	29	81
	Agricultural Research	3	3	3	13	27
	Agriculture Development	5	5	7	28	89
	Agriculture Water Resources	2	2	3	12	41
	Capacity Building (Agricultural Livelihood)	3	3	19	73	99
	Fisheries	1	1	1	6	11
	Forestry	2	2	5	14	26
	Livestock and poultry	3	3	19	73	99
	Pest / disease control	1	1	1	3	9
	Plant Production	5	5	7	24	47
	Provision of paddy plantation & cultivation	5	5	7	26	44
	Agricultural Assessment					
	Agro-Industry					
Sector Total (AGRICULTURE)		24	18	27	156	430
CCCM	Camp Management					
	Camp Coordination					
	Capacity Building and Training					
	Community Tool Kit Distribution					
Sector Total (CCCM)						
Coordination	General Coordination	1	1	6		
	Information Management	1	1			
	Civil Military Coordination					
	Information & Communications Technology					
	Security Management					
Sector Total (COORDINATION)		2	1	6		
Disaster Risk Reduction	Community based Disaster Preparedness and Risk Reduction	7	6	8	62	90
	Public Awareness, Education and Training	1	1	2	2	2
	Hazard, vulnerability and risk assessment					
	Mainstreaming of DRR into development					
	Multi - hazard Early Warning Systems					
	Policy and institutional development					
	Preparedness and Response Programs					
Sector Total (DRR)		8	7	10	64	92
Education	Disaster Preparedness Response in Education	1	1	2		
	Early Childhood Development	16	6	43	178	354
	Food for Education	2	2	18	74	113
	Non-Formal Education	17	10	48	89	105
	Quality Basic Education/Formal Education	19	14	43	157	262
Sector Total (EDUCATION)		47	20	63	404	774
Environment		7	6	9	30	85

South East of Myanmar - Summary of Organizations' Sub Sectors Interventions Projects Under Implementation as of 23 October 2013

Sector	Sub Sector	No. of Projects	No. of Organizations	No. of Townships	No. of Village Tracts/Towns	No. of Villages/Wards
Food	Food For Work	2	1	3	7	9
	General Food Distribution	9	8	14	48	28
	Food For Training					
	Food + Cash For Work					
Sector Total (FOOD)		11	9	17	55	37
Governance	Economic and Development policy/planning	4	3	11		
	Human Rights Promotion and Advocacy	7	4	10	22	48
	Institutional Strengthening and Public Administration Reform	5	4	19		
	Media and flow of information	3	2	5		
	Strengthening civil society	16	9	74	81	104
	Transparency/Accountability	1	1	15		
	Access to Justice					
	Elections					
	Housing, Property and Land Reform					
	Human Rights Monitoring					
	Legislative Reform					
	Monitoring & Reporting Mechanism on GCRV					
	Public sector financial management					
	Rule of Law					
Sector Total (GOVERNANCE)		30	16	78	101	152
Health	Basic Health Care	14	8	32	91	218
	Community Home Based Care	2	2	3	15	19
	Control of communicable diseases	6	5	44	77	167
	Coordination	1	1	3	26	39
	Disease surveillance	1	1	7		
	Health Assessment	3	2	3	7	17
	Health Education	14	10	46	604	3967
	HIV/AIDS Programme	34	20	77	133	235
	Malaria Programme	15	13	68	748	1474
	Reproductive health care	13	7	51	219	400
	Revitalization of existing HS - HR	2	2	8	5	17
	Revitalization of existing HS - Infrastructure	3	3	11	29	31
	Revitalization of existing HS- Equipment&Supplies	2	2	9		
	TB Programme	10	8	47	388	551
	Vector control methods	1	1	3	26	39
	Women and Child Health	15	7	48	74	198
	Harm Reduction					
	Health Care Waste Management					
	Mental Health and Psychosocial Support					
Sector Total (HEALTH)		103	39	85	1,294	5,585
Logistics						

South East of Myanmar - Summary of Organizations' Sub Sectors Interventions Projects Under Implementation as of 23 October 2013

Sector	Sub Sector	No. of Projects	No. of Organizations	No. of Townships	No. of Village Tracts/Towns	No. of Villages/Wards
Mine Action	Advocacy	1	1	1		
	Mine-Risk Education	7	6	22	76	120
	Victim Assistance	3	2	4	7	8
	Humanitarian Clearance of Mines and ERW					
	Stockpile Destruction					
Sector Total (MINE ACTION)		11	8	23	83	128
Non-Agricultural Livelihoods/ Infrastructure	Cash for work	1	1	8	71	133
	Income Generation	14	10	34	188	350
	Micro-Finance	9	7	42	238	997
	Rehabilitation-Community Infrastructure & Facility	8	5	21	22	38
	Social Recovery	5	4	23	144	247
	Vocational Training	6	4	17	108	205
Sector Total (NON-AGRICULTURAL LIVELIHOODS/INFRASTRUCTURE)		30	15	53	365	1,273
Non-Food Items	NFI Distribution	4	1	10	40	46
	NFI Assessment					
	NFI Coordination					
Sector Total (NON-FOOD ITEMS)		4	1	10	40	46
Nutrition	Inpatient Therapeutic Programme (ITP)	1	1	7		
	Multiple Micronutrient Supplementation	2	2	16	9	13
	Outpatient Therapeutic Programme (OTP)	1	1	3		
	Nutrition Assessment with W/H					
	Nutritional Surveillance					
	Supplementary Feeding					
	Direct Feeding Programme					
	Monitoring Breast Milk Substitutes					
	Nutrition Assessment with MUAC					
	Nutrition Survey					
	Routine Micronutrient Supplementation Programme					
Sector Total (NUTRITION)		4	3	23	9	13
Peace Building/ Conflict Prevention	Conflict transformation and Peacebuilding	12	4	26	28	34
	Demobilization of adult combatants	1	1	6		
	Rehabilitation of conflict-affected infrastructure	1	1	1		
	Support for durable solutions for returnees	2	1	5	4	13
	Civil administration					
	Customs and border control					
	Demobilization of children					
Sector Total (PEACE BUILDING/CONFLICT PREVENTION)		16	4	29	32	47

South East of Myanmar - Summary of Organizations' Sub Sectors Interventions Projects Under Implementation as of 23 October 2013

Sector	Sub Sector	No. of Projects	No. of Organizations	No. of Townships	No. of Village Tracts/Towns	No. of Villages/Wards
Protection	Awareness Raising on Protection Issues	6	4	15	14	22
	Child Protection	14	6	39	194	319
	Child Protection in Emergencies	1	1	1		
	Civil Documentation	1	1	18	268	895
	Community Based Protection (Groups)	4	3	4	14	25
	Family Tracing	1	1	19		
	Housing, Land and Property (IDP, returnee)	1	1	14	190	248
	Human Trafficking	4	2	5	30	48
	Persons with Disabilities	1	1	3	39	49
	Promoting Gender Equality and Empowerment of Women	4	4	71	76	113
	Protection Assessment	3	1	16	10	12
	Sexual and Gender Based Violence	4	3	5	13	42
	Vulnerable Populations in Emergencies	1	1	1	1	1
	Psychosocial Activities (Other than CFS)					
Sector Total (PROTECTION)		39	17	83	504	1,368
Shelter	Permanent Shelter	2	2	4	7	8
	Shelter Assessment	1	1	25		
	Temporary Shelter					
	IEC production					
	Shelter Cash					
	Shelter Coordination					
	Shelter Maintenance					
	Shelter Support					
Sector Total (SHELTER)		3	3	26	7	8
WASH	Construction & Rehabilitation -Sanitation Facility	8	8	22	114	209
	Construction & Rehabilitation -Water Facility	12	9	26	179	378
	Environmental Sanitation	4	4	6	40	80
	Hygiene Promotion	8	7	30	228	306
	Safe Water Supply	8	6	16	63	126
	Environmental Sanitation					
Sector Total (WASH)		24	18	44	360	690
Grand Total (All Sectors)		265 (40%)	80 (50%)	84 (100%)	1,583 (64%)	7,168 (43%)