

## Overview of the October 2013 3W

### RAKHINE – VILLAGE LEVEL 3W

The MIMU 3W gathers inputs from participating humanitarian and development agencies on Who is doing What, Where, across Myanmar. This exercise is currently conducted every 6 months.

159 agencies participated in the October 13 3W, providing information on their activities in the 18 sectors and 133 sub-sectors which have been defined through the existing technical/sector working groups. There is still likely to be under-reporting of the specific activities of field-based local NGOs and CBOs.

This overview of the reported 3W results in Rakhine describes projects under implementation at township/village level as of October 23, 2013. It *does not include* information on humanitarian activities underway in IDP camps which are part of the MIMU Camp 3W exercise conducted at the same time. Products of the Camp 3W are currently being prepared.

Further information on proposed and recently completed projects is available from the 3W dataset, published on the MIMU website.

## 1. Organizations Active in Rakhine at village level

A total of 40 organizations reported projects under implementation in Rakhine that are village or township based (note that this analysis does not include camp-based activities for internally displaced populations). The majority are NGOs. There is some level for agency activity reported in most village tracts, with agencies most concentrated in Sittwe (21 agencies), and in the townships close to and north of Sittwe (Myebon, Rathedaung, Pauktaw, Buthidaung, Mrauk-U, Maungdaw, Minbya and Kyaukpyu with 10-15 agencies active in each of these townships).

Org. Type	INGO	NNGO	UN	Red Cross	CBO*	Donor	Embassy	BBO*	Total
<b>Countrywide</b>	<b>74</b>	<b>56</b>	<b>13</b>	<b>3</b>	<b>3</b>	<b>2</b>	<b>1</b>	<b>7</b>	<b>159</b>
<b>Rakhine</b>	<b>20</b>	<b>10</b>	<b>7</b>	<b>2</b>	<b>1</b>				<b>40</b>
BBO* - Border-based Organization					CBO* - Community Based Organization				

## 2. Projects by Sector (Village-level 3W)

130 projects were reported in 14 sectors (20% of the total projects reported to the countrywide 3W). In terms of the frequency of project interventions:

- **Health is the most widespread intervention** with 16 organizations reportedly implementing 46 projects in 811 villages. There is some level of health activity in all 17 townships, though more concentrated in the townships of Sittwe, Buthidaung and Maungdaw. The majority of health interventions are Health Education (734 villages), with a significantly lower number of interventions in other sub-sectors - Malaria Programme (59 villages), Basic Health Care (40 villages). Other activities reported at village tract level were TB Programme (140 village tracts) and Reproductive Health Care (49 village tracts).
- **Agriculture is the second most commonly reported sector** with activities under implementation by 10 agencies in 450 villages in 11 of the 17 townships in Rakhine. The main activities; Agriculture Development (290 villages), Agriculture Inputs (209 villages), Capacity Building (72 villages) and Fisheries (67 villages).
- **Protection is the third main sector** with agency activities in 206 villages across 13 of the 17 townships in Rakhine. The main activities - Child Protection (153 villages), Promoting Gender Equality and Empowerment of Women (55 villages) and Community Based Protection activities (10 villages).
- **DRR is the fourth main sector** in Rakhine with 7 organizations active in 177 villages in 10 of the 17 townships, most frequently in support to Community based Disaster Preparedness and Risk Reduction (151 villages), Public Awareness, Education and Training (48 villages) and Hazard, Vulnerability and Risk Assessment (33 villages).

## Overview of the October 2013 3W

### RAKHINE – VILLAGE LEVEL 3W

- **WASH is the fifth main sector of agency activities** with 6 organizations implementing activities in 132 villages (70 village tracts/towns), in 7 of the 17 townships. The majority of WASH interventions are Construction & Rehabilitation -Water Facility (100 villages) and Hygiene Promotion (32 villages).
- There is far less attention to other sectors; Non-Agricultural Livelihoods/ Infrastructure (9 agencies, 109 villages), Environment (4 agencies, 99 villages), Nutrition (6 agencies, 69 villages), Education (8 agencies, 25 villages), Shelter (3 agencies, 17 villages), Peace Building/ Conflict Prevention (2 agencies, 17 villages), Governance (3 agencies across 6 townships) and Food and Logistics (1 agency).

#### Summary Report by Sector in RAKHINE with DEVELOPMENT Projects Under Implementation as of October 23, 2013

Sector	No. of Projects	No. of Organizations	No. of Township	No. of Village Tracts/Towns	No. of Villages/Wards
Agriculture	17	10	11	200	450
Coordination					
Disaster Risk Reduction	12	7	10	113	177
Education	16	8	17	15	25
Environment	5	4	6	47	99
Food	1	1	3		
Governance	8	3	6	4	5
Health	46	16	17	450	811
Logistics	1	1	1		
Mine Action					
Non-Agricultural Livelihoods/ Infrastructure	13	9	10	65	109
Nutrition	8	6	8	63	69
Peace Building/ Conflict Prevention	3	2	17	17	17
Protection	23	8	13	96	206
Shelter	3	3	9	11	17
WASH	8	6	7	70	132
<b>Grand Total (All Sectors)</b>	<b>130 (20%)</b>	<b>40 (25%)</b>	<b>17 (100%)</b>	<b>714 (69%)</b>	<b>1527 (39%)</b>

#### Summary Report by Township in RAKHINE with DEVELOPMENT Projects Under Implementation as of October 23, 2013

Sector	No. of Projects	No. of Organizations	Village Tracts/Towns		No. of Villages/Wards	
			Number	%	Number	%
Ann	7	4	2	7	2	1
Buthidaung	33	12	78	100	99	27
Gwa	9	9	28	85	83	47
Kyaukpyu	12	10	54	100	162	58
Kyauktaw	10	7	8	10	12	4
Maungdaw	43	11	85	87	100	29
Minbya	16	11	26	42	60	22
Mrauk-U	18	12	94	100	254	100
Munaung	3	2	1	3	1	1

**Overview of the October 2013 3W  
RAKHINE – VILLAGE LEVEL 3W**

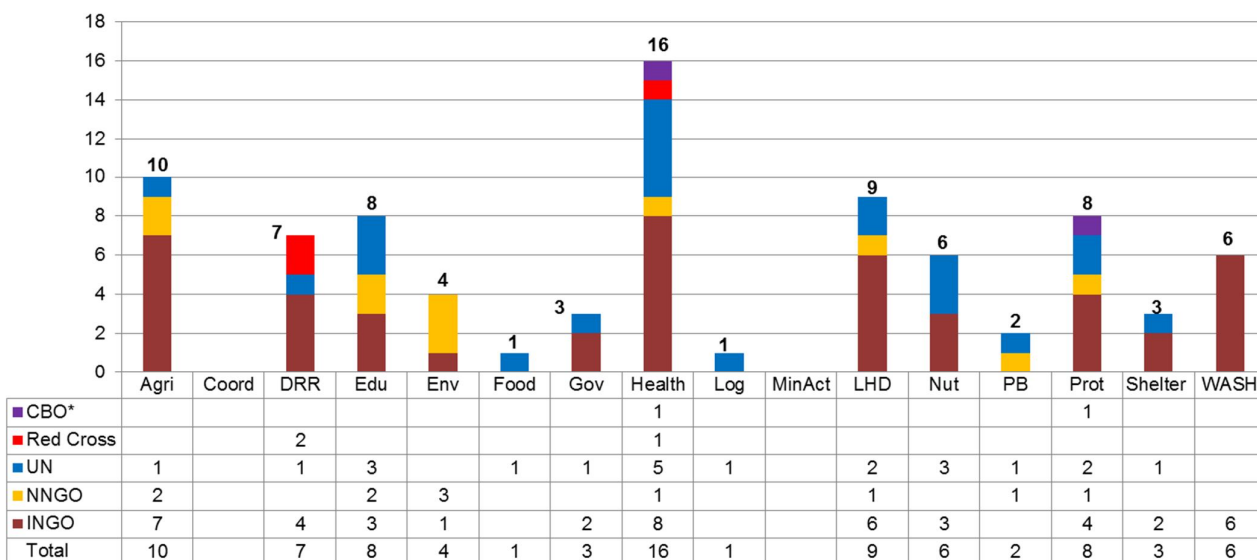
Myebon	24	15	37	73	101	64
Pauktaw	21	13	32	60	96	49
Ponnagyun	8	5	92	100	202	100
Ramree	6	4	19	37	36	18
Rathedaung	22	13	88	100	214	100
Sittwe	42	21	22	81	39	42
Thandwe	8	5	11	17	15	5
Toungup	11	7	37	71	51	23
<b>Grand Total (All Sectors)</b>	<b>130 (20%)</b>	<b>40 (25%)</b>	<b>714</b>	<b>69</b>	<b>1527</b>	<b>39%</b>

**No. of Organizations by Sector and Township in RAKHINE (as of 23 October 2013)**

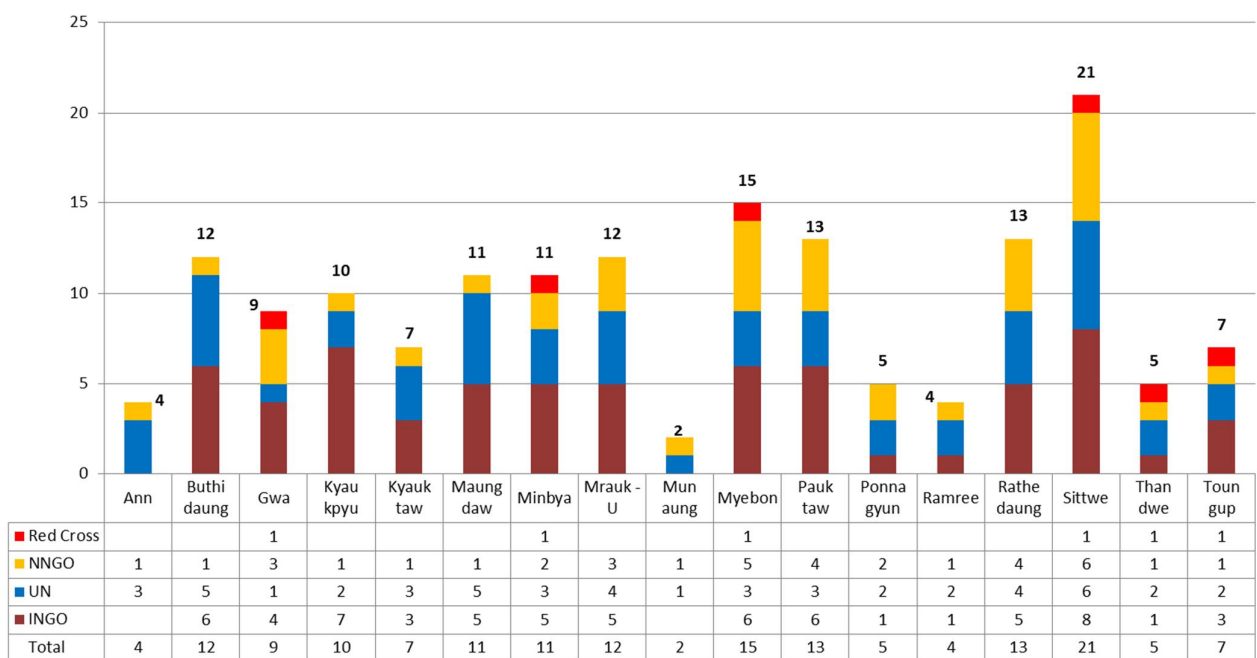
Township	Agriculture	Coordination	Disaster Risk Reduction	Education	Environment	Food	Governance	Health	Logistics	Mine Action	Non-Agricultural Livelihoods/Infrastructure	Nutrition	Peace Building/Conflict Prevention	Protection	Shelter	WASH	Township-Total
Ann				1				3					1				4
Buthidaung	3			2		1		8			3	4	2	2		2	12
Gwa	1		2	1	2		1	2					1				9
Kyaukpyu	2		1	1	1			2			1		1	4	1		10
Kyauktaw				2				3			1	1	1	1	1		7
Maungdaw	3		1	2		1	1	8	1		3	5	2	1	1	3	11
Minbya	2		1	2			2	2			2	2	1	2	1		11
Mrauk-U	1			3			1	3			2		1	4	1		12
Munaung				1				1					1				2
Myebon	4		2	1	2		1	2			3	2	1	6	2	1	15
Pauktaw	3		2	3	2			3			1	2	1	2	1	3	13
Ponnagyun				3				2					1				5
Ramree				1				1					1	2	1		4
Rathedaung	1		3	4	2	1		5			1	1	2	1		1	13
Sittwe			2	4	2		3	11			1	2	1	5	1	2	21
Thandwe			1	1				3					1	1			5
Toungup			1	2				4					1	1		1	7
<b>Sector Total</b>	<b>10</b>		<b>7</b>	<b>8</b>	<b>4</b>	<b>1</b>	<b>3</b>	<b>16</b>	<b>1</b>		<b>9</b>	<b>6</b>	<b>2</b>	<b>8</b>	<b>3</b>	<b>6</b>	

## Overview of the October 2013 3W RAKHINE – VILLAGE LEVEL 3W

**No. of Organizations by Sector in Rakhine**



**No. of Organization by Township in Rakhine**



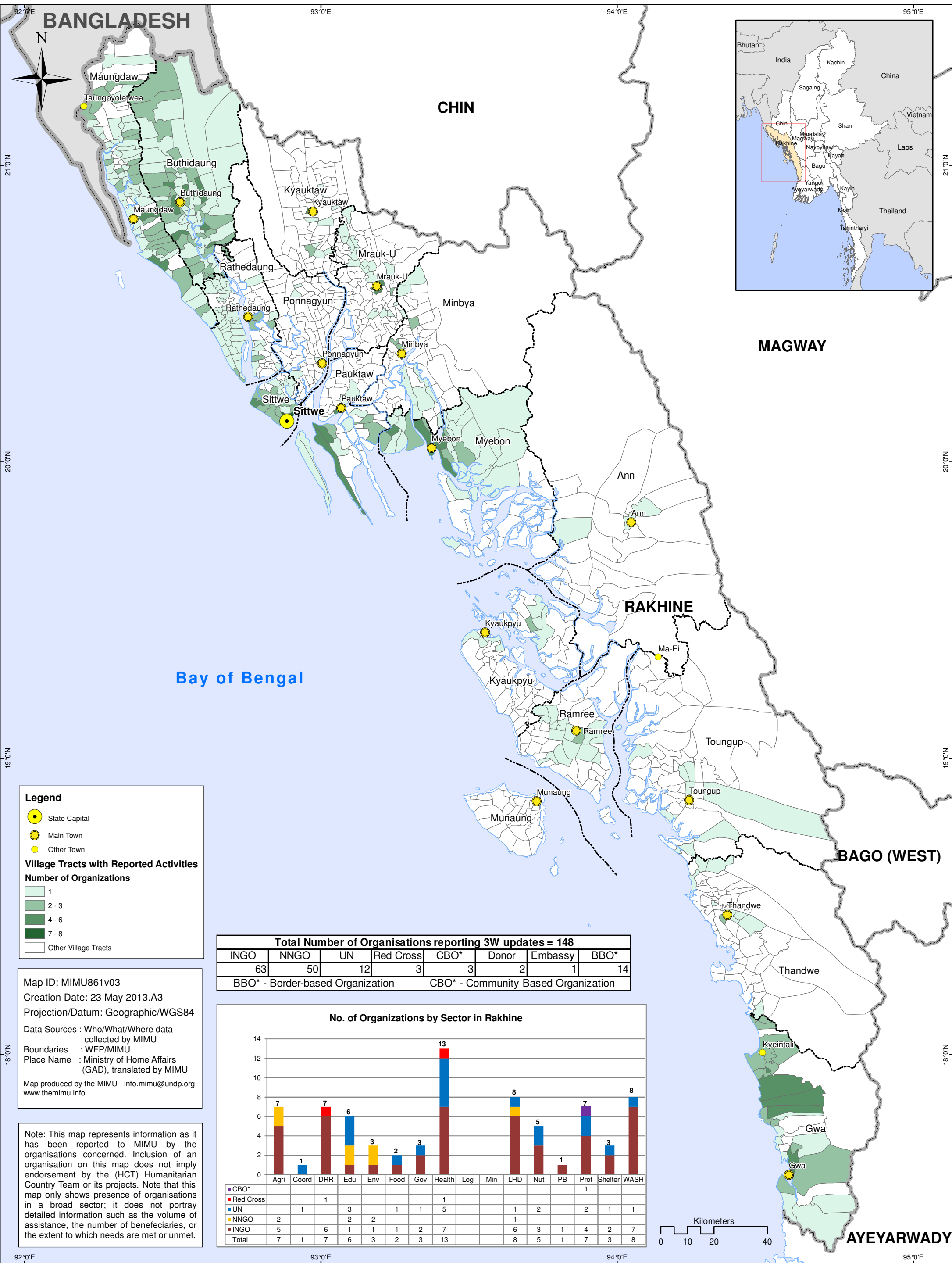
Location of UN/INGO/NGO Projects Currently Under Implementation  
Rakhine State (Village Tract Level)  
Reported to MIMU as of 15 May 2013



Schweizerische Eidgenossenschaft  
Confédération suisse  
Confederazione Svizzera  
Confederaziun svizra

Embassy of Switzerland in Myanmar

Myanmar Information  
Management Unit





# Who/What/Where - Rakhine - Organisation Presence at Township Level by Sector as of 15 May 2013 (Projects Under Implementation)

Township	Township_pCode	Agriculture	Coordination	Disaster Risk Reduction	Education	Environment	Food	Governance	Health	Mine Action	Non-agricultural livelihoods/ Infrastructure	Nutrition	Peace Building/ Conflict Prevention	Protection	Shelter	WASH	Count of Orgs.
Ann	MMR012014			CWS	RTA, UNICEF				MRCS & IFRC, UNICEF, UNFPA								5
Buthidaung	MMR012010	CARE, CDN, RTA			RTA, UNICEF, WFP		WFP		MRCS & IFRC, Malteser, MSF-H, UNICEF, UNFPA, WFP		CDN, UNHCR	ACF, UNICEF, WFP		UNHCR		CARE	11
Gwa	MMR012017	Swanyee		ACTED, MRCS & FRC	RTA, UNICEF	MERN, Oikos		NPA	MRCS & IFRC, PSI, UNICEF								10
Kyaukpyu	MMR012011			CWS	RTA, UNICEF	MSN	WFP		MRCS & IFRC, ACF, UNICEF, UNFPA			ACF		OXFAM, UNHCR		OXFAM, UNICEF	10
Kyauktaw	MMR012004				RTA, UNICEF		WFP	UNDP	MRCS & IFRC, MSF-H, UNICEF, UNFPA, WHO			UNICEF		UNHCR		UNICEF	8
Maungdaw	MMR012009	CARE, RTA			RTA, UNICEF, UNHCR, WFP		WFP		MRCS & IFRC, Malteser, MSF-H, UNICEF, UNHCR, UNFPA, WFP		BAJ, UNHCR	ACF, Malteser, UNICEF, WFP		Tdh-L, UNICEF, UNHCR	CARE	CARE, Malteser	12
Minbya	MMR012005	IRC			RTA, UNICEF		WFP	NPA, UNDP	MRCS & IFRC, MSF-H, UNICEF, UNFPA, WHO			UNICEF		Tdh-L, UNHCR		UNICEF	11
Mrak-U	MMR012003	MC			RTA, UNICEF, YF		WFP	UNDP	MRCS & IFRC, JOICFP, MSF-H, UNICEF, UNFPA, WHO		MC	UNICEF		SCI, UNHCR		UNICEF	12
Munaung	MMR012012			CWS	UNICEF				MRCS & IFRC, UNICEF								3
Myebon	MMR012006	DRC, IRC		Malteser, PLAN	RTA, UNICEF		WFP		MRCS & IFRC, UNICEF, UNFPA, WHO		DRC, IRC, MHDO	UNICEF		Tdh-L, UNICEF, UNHCR	Malteser	Malteser, Solidarites, UNICEF	13
Pauktaw	MMR012007	CDN, DRC		Malteser, OXFAM	BAJ, RTA, UNICEF, YF		SCI, WFP		MRCS & IFRC, Malteser, MSF-H, UNICEF, UNFPA, WHO		MHDO	UNICEF		SCI, UNHCR		DRC, SCI, Solidarites, UNICEF	16
Ponnagyun	MMR012002				RTA, UNICEF, YF				MRCS & IFRC, UNICEF, UNFPA							UNICEF	5
Ramree	MMR012013				RTA, UNICEF		WFP	AAM	MRCS & IFRC, UNICEF, UNFPA					UNHCR		OXFAM, UNICEF	8
Rathedaung	MMR012008			Malteser, OXFAM	RTA, UNICEF, WFP, YF		WFP	UNDP	MRCS & IFRC, JOICFP, Malteser, UNICEF, UNHCR, UNFPA					SCI, UNHCR		Malteser, UNICEF	12
Sittwe	MMR012001		UNOCHA	CWS, Malteser, OXFAM	RTA, UNICEF, YF		SCI, WFP	NPA	MRCS & IFRC, ACF, AFXB, Malteser, MSF-H, MERCY, PSI, UNICEF, UNFPA, WFP, WHO		AFXB	ACF, SCI, UNICEF		DRC, Phoenix, SCI, Tdh-L, UNICEF, UNHCR	Malteser, UNICEF	CDN, DRC, Malteser, SCI, Solidarites, UNICEF	23
Thandwe	MMR012015			CWS, MRCS & FRC	RTA, UNICEF	Oikos			MRCS & IFRC, PSI, UNICEF, UNFPA					UNICEF			8
Toungup	MMR012016			CWS	RTA, UNICEF				MRCS & IFRC, PSI, UNICEF, UNFPA								6
Not Specified				CARE								UNICEF	NPA	UNHCR			4

Note: WHO Projects data which was received in May 2013 may not be included in all the 3W Maps.

**RAKHINE - Summary of Organizations' Sub Sectors Interventions**  
**Projects Under Implementation as of October 23, 2013**

Sector	Sub Sector	No. of Projects	No. of Organizations	No. of Townships	No. of Village Tracts/ Towns	No. of Villages/ Wards
Agriculture	Agricultural Assessment	1	1	2	19	24
	Agricultural Extension	2	2	2	14	19
	Agricultural Inputs	7	7	10	90	209
	Agricultural Research	1	1	1	1	1
	Agriculture Development	5	5	6	137	290
	Agriculture Water Resources	2	2	2	16	41
	Capacity Building (Agricultural Livelihood)	4	3	4	40	72
	Fisheries	3	3	7	36	67
	Livestock and poultry	2	2	2	8	12
	Plant Production	1	1	1	1	2
	Provision of paddy plantation & cultivation	4	3	4	21	34
<b>Sector Total (AGRICULTURE)</b>		<b>17</b>	<b>10</b>	<b>11</b>	<b>200</b>	<b>450</b>
Disaster Risk Reduction	Community based Disaster Preparedness and Risk Reduction	9	7	10	96	151
	Hazard, vulnerability and risk assessment	2	2	5	24	33
	Multi - hazard Early Warning Systems	1	1	1	10	29
	Policy and Institutional development	1	1	3	5	4
	Preparedness and Response Programs	4	3	4	10	29
	Public Awareness, Education and Training	3	3	4	22	48
<b>Sector Total (DRR)</b>		<b>12</b>	<b>7</b>	<b>10</b>	<b>113</b>	<b>177</b>
Education	Early Childhood Development	6	4	10	10	17
	Non-Formal Education	5	3	17	1	
	Quality Basic Education/Formal Education	4	4	9	3	7
<b>Sector Total (EDUCATION)</b>		<b>16</b>	<b>8</b>	<b>17</b>	<b>15</b>	<b>25</b>
Environment		5	4	6	47	99
<b>Sector Total (Environment)</b>		<b>5</b>	<b>4</b>	<b>6</b>	<b>47</b>	<b>99</b>
Food	Food For Work	1	1	3		
	General Food Distribution	1	1	3		
<b>Sector Total (FOOD)</b>		<b>1</b>	<b>1</b>	<b>3</b>		
Governance	Economic and Development policy/planning	1	1	3		
	Human Rights Promotion and Advocacy	3	1	1		
	Institutional Strengthening and Public Administration Reform	2	2	4		
	Media and flow of Information	1	1	3		
	Strengthening civil society	4	2	5	4	5
	Transparency/Accountability	1	1	2		
<b>Sector Total (GOVERNANCE)</b>		<b>8</b>	<b>3</b>	<b>6</b>	<b>4</b>	<b>5</b>

**RAKHINE - Summary of Organizations' Sub Sectors Interventions**  
**Projects Under Implementation as of October 23, 2013**

Sector	Sub Sector	No. of Projects	No. of Organizations	No. of Townships	No. of Village Tracts/ Towns	No. of Villages/ Wards
Health	Basic Health Care	6	5	8	76	40
	Community Home Based Care	1	1	2		
	Control of Communicable Diseases	2	2	4		
	Coordination	4	2	4		
	Disease surveillance	1	1	1		
	Health Education	6	5	7	307	734
	HIV/AIDS Programme	12	9	8	3	
	Malaria Programme	5	5	13	92	59
	Mental Health and Psychosocial Support	1	1	2	4	
	Reproductive Health Care	10	5	11	49	
	Revitalization of existing HS - HR	1	1	2		
	Revitalization of existing HS - Infrastructure	1	1	1		
	Revitalization of existing HS- Equipment&Supplies	1	1	1		
	Revitalization of existing HS-equipment & supplies	1	1	1		
	Revitalization of existing HS-HR	1	1	1		
	TB Programme	8	6	7	140	
	Women and Child Health	5	3	17		
<b>Sector Total (HEALTH)</b>		<b>46</b>	<b>16</b>	<b>17</b>	<b>450</b>	<b>811</b>
Logistics		1	1	1		
<b>Sector Total (Logistics)</b>		<b>1</b>	<b>1</b>	<b>1</b>		
Non-Agricultural Livelihoods/ Infrastructure	Cash For Work	6	6	8	47	85
	Income Generation	7	7	9	48	77
	Micro-Finance	1	1	1	1	2
	Rehabilitation-Community Infrastructure & Facility	3	3	3	18	11
	Social Recovery	2	2	7	27	51
	Vocational Training	7	5	9	34	52
<b>Sector Total (NON-AGRICULTURAL LIVELIHOODS/INFRASTRUCTURE)</b>		<b>13</b>	<b>9</b>	<b>10</b>	<b>65</b>	<b>109</b>
Nutrition	Direct Feeding Programme	1	1	1		
	Inpatient Therapeutic Programme (ITP)	2	2	3	2	
	Nutritional Surveillance	2	2	3	6	6
	Outpatient Therapeutic Programme (OTP)	2	2	7	10	
	Supplementary Feeding	4	4	3	27	
<b>Sector Total (NUTRITION)</b>		<b>8</b>	<b>6</b>	<b>8</b>	<b>63</b>	<b>69</b>



**RAKHINE - Summary of Organizations' Sub Sectors Interventions**  
**Projects Under Implementation as of October 23, 2013**

Sector	Sub Sector	No. of Projects	No. of Organizations	No. of Townships	No. of Village Tracts/ Towns	No. of Villages/ Wards
Peace Building/ Conflict Prevention	Conflict transformation and Peacebuilding	3	2	17	17	17
<b>Sector Total (PEACE BUILDING/CONFLICT PREVENTION)</b>		<b>3</b>	<b>2</b>	<b>17</b>	<b>17</b>	<b>17</b>
Protection	Awareness Raising on Protection Issues	8	1	9		
	Child Protection	9	5	9	81	153
	Child Protection in Emergencies	1	1	1	1	2
	Civil Documentation	1	1	1		
	Community Based Protection (Groups)	1	1	1	6	10
	Family Tracing	1	1	6		
	Promoting Gender Equality and Empowerment of Women	2	1	1	17	55
	Protection Assessment	1	1	3		
	Sexual and Gender Based Violence	1	1	8		
	Vulnerable Populations in Emergencies	1	1	8		
<b>Sector Total (PROTECTION)</b>		<b>23</b>	<b>8</b>	<b>13</b>	<b>96</b>	<b>206</b>
Shelter	Permanent Shelter	1	1	1	2	2
	Shelter Assessment	1	1	8		
	Shelter Coordination	1	1	8		
	Shelter Maintenance	1	1	3	7	11
	Shelter Support	1	1	1	2	4
	Temporary Shelter	1	1	3	7	11
<b>Sector Total (SHELTER)</b>		<b>3</b>	<b>3</b>	<b>9</b>	<b>11</b>	<b>17</b>
WASH	Assessment	1	1	1		
	Construction & Rehabilitation -Sanitation Facility	4	4	5	15	9
	Construction & Rehabilitation -Water Facility	7	5	5	51	100
	Environmental Sanitation	3	3	3	4	5
	Hygiene Promotion	5	5	6	30	32
	Safe Water Supply	3	3	4	13	5
<b>Sector Total (WASH)</b>		<b>8</b>	<b>6</b>	<b>7</b>	<b>70</b>	<b>132</b>
<b>Grand Total (All Sectors)</b>		<b>130 (20%)</b>	<b>40 (25%)</b>	<b>17 (100%)</b>	<b>714 (69%)</b>	<b>1527 (39%)</b>