

The MIMU 3W gathers inputs from participating humanitarian and development agencies on **Who is doing What, Where**, across Myanmar. This exercise is currently conducted every 6 months, gathering information on agencies' activities at village/township level (MIMU Village level 3W) as well as in IDP camps (MIMU Camp 3W).

205 agencies contributed to the April 15 3W, providing information on their activities in the 19 sectors and 145 sub-sectors defined through the existing technical/sector working groups. There is still likely to be under-reporting of the specific activities of field-based local NGOs and CBOs.

**This Overview describes reported Projects under Implementation with Non-IDP beneficiaries at township, village tract or village level** in Rakhine as of March 25, 2015. Hence it includes activities with mixed beneficiary populations (non-IDP and IDP), but does not include interventions which were specified as "IDP-only".

Further information on **planned and recently completed** projects is available from the 3W dataset, published on the MIMU website and, at a glance, through the **MIMU 3W Township Dashboard**, <http://themimu.info/3w-dashboard>

## 1. Organizations active at Village level in Rakhine

In total, 58 agencies reported activities in Rakhine state - 22 are engaged in non-IDP response activities only (1,190 villages), 35 are engaged in activities which target IDP and Non-IDP beneficiaries (288 villages) and 1 is active in IDP-only response activities (85 IDP camps and 115 villages). In all there were 141 village or township based projects in Rakhine (non-IDP and mixed beneficiary groups), and 41 camp-based projects (IDP only).

For the development focused (non-IDP response) activities, 57 organizations reported 141 projects under implementation in Rakhine that are village or township based. The majority are NGOs. There is some level of agency activity reported in most village tracts, with agencies most concentrated in Sittwe (28 agencies), and in the townships close to and north of Sittwe (Pauktaw, Mrauk-U, Myebon, Minbya and Kyauktaw with 12-16 agencies active in each of these townships).

### Agencies reporting Activities in Rakhine State

Organisation Type	INGO	NNGO	UN	Red Cross	CBO*	Donor	Embassy	BBO*	Total
<b>Countrywide</b>	<b>89</b>	<b>60</b>	<b>16</b>	<b>9</b>	<b>2</b>	<b>1</b>	<b>1</b>	<b>27</b>	<b>205</b>
<b>Rakhine (All Projects)</b>	<b>27</b>	<b>14</b>	<b>11</b>	<b>3</b>	<b>3</b>	<b>0</b>	<b>0</b>	<b>0</b>	<b>58</b>
- Only Non-IDP Response	9	10	2	0	1	0	0	0	22
- Both Non-IDP and IDP Response	18	4	9	2	2	0	0	0	35
- Only IDP Response	0	0	0	1	0	0	0	0	1
BBO* - Border-based Organization      CBO* - Community Based Organization									

## 2. Projects by Sector (Village-level 3W)

141 projects were reported in 16 sectors in 1,302 villages across Rakhine, representing 19% of the total projects reported to the countrywide 3W.

In terms of the number of agencies: Sittwe township has the highest concentration of active organisations (28 agencies), followed by Minbya, Mrauk-U and Pauktaw (16 agencies active in each), Myebon (15 agencies), Kyaukphyu (13 agencies), Kyauktaw and Maungdaw (12 agencies active in each)

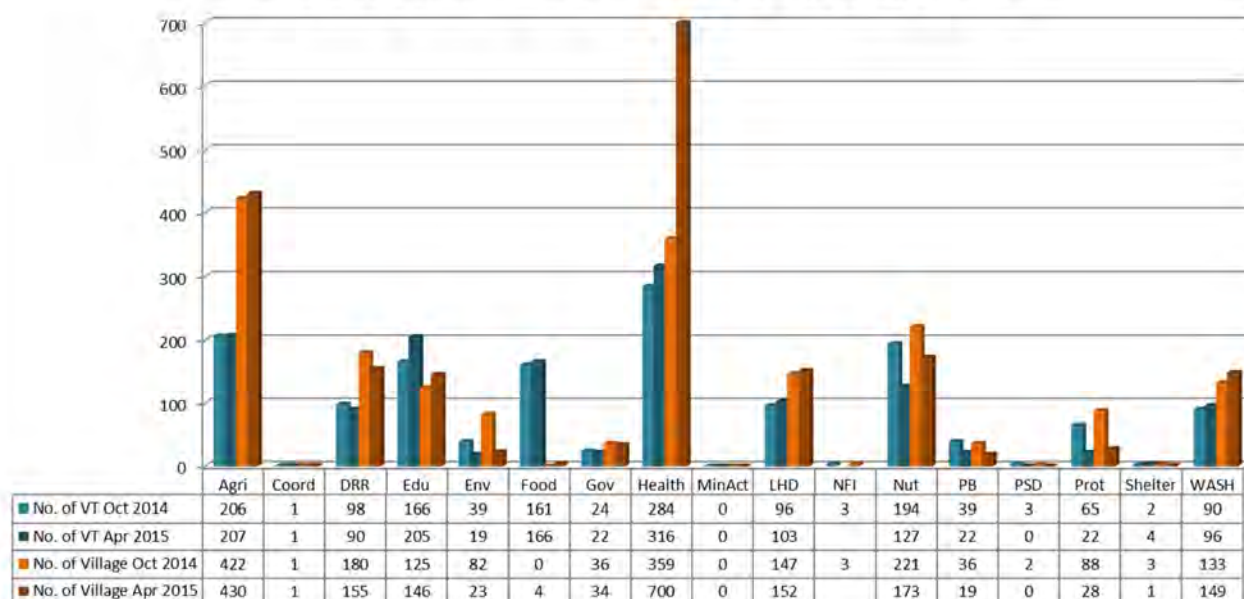
In terms of the frequency of project interventions:

- **Health is the most widespread intervention** with 17 organizations reportedly implementing 30 projects in 700 villages across Rakhine State. In terms of geographic spread, some level of health activity was reported in all 17 townships, though it is reportedly more concentrated in the townships of Sittwe (11 agencies), with a significantly lower number of interventions in other township – Maungdaw and Mrauk-U (6 agencies in each) and Buthidaung (5 agencies). The majority of health interventions are Malaria Programme (354 villages), Basic Health Care (287), TB Programme (132) and Health Education (102) with a significantly lower number of interventions in other sub-sectors – Mental Health and Psychosocial Support (29 villages) and Reproductive Health Care (22).

- **Agriculture is the second most commonly reported sector** with activities reportedly under implementation by 13 agencies in 430 villages in 9 of the 17 townships in Rakhine. The main activities; Agriculture Development (302 villages), Agriculture Inputs (197), Forestry (120), and Agriculture Water Resources (103).
- **Nutrition is the third main sector** with agency activities reported in 173 villages and 127 village tracts across 11 townships in Rakhine, particularly in Maungdaw (4 agencies). The most frequent activities are Nutrition Assessment with MUAC (91 villages) and Infant and Young Child Feeding (57).
- **DRR is the fourth main sector** in Rakhine with 11 organizations active in 155 villages in 9 of the 17 townships. DRR activities are most frequently Community based Disaster Preparedness and Risk Reduction (149 villages) with a significantly lower number of interventions in other sub-sectors Preparedness and Response Programmes (20 villages), Public Awareness, Education and Training (12 villages) and Hazard, vulnerability and risk assessment (6 villages).
- **Non-Agricultural Livelihood/Infrastructure is the fifth main sector of agency activities** with 12 organizations implementing activities in 152 villages (103 village tracts/towns), in 10 of the 17 townships with slightly more organizations in Maungdaw, Minbya, Buthidaung, Myebon and Sittwe with 4-3 agencies active in each of these townships. The majority of interventions are Social Recovery (99 villages) and Income Generation (78).
- There is far less activity reported at village level in other sectors; The food sector agencies likely to be under-reporting at village level information (4 agencies, 166 village Tracts). Others were WASH (10 agencies, 149 villages), Education (15 agencies, 146 villages), Governance (5 agencies, 34 villages), Protection (10 agencies, 28 villages), Environment (3 agencies, 23 villages), Peace Building/ Conflict Prevention (2 agencies, 19 villages), CCCM, Coordination and Shelter (2 agencies, 1 village/ward in each) and Non-Food Items (1 agency, 4 townships). No projects were reported as under implementation for the Private Sector Development and Mine Action Sectors.

<b>Summary Report by Sector in RAKHINE State with Non-IDPs Response Projects Under Implementation as of March 25, 2015</b>					
<b>Sector_Cluster</b>	<b>No. of Projects</b>	<b>No. of Organizations</b>	<b>No. of Townships</b>	<b>No. of Village Tracts/ Towns</b>	<b>No. of Villages/ Wards</b>
Agriculture	14	13	9	207	430
CCCM	2	2	2	2	1
Coordination	2	2	1	1	1
Disaster Risk Reduction	16	11	9	90	155
Education	20	15	15	205	146
Environment	5	3	5	19	23
Food	1	4	5	166	4
Governance	9	5	5	22	34
Health	30	17	17	316	700
Mine Action	0	0	0	0	0
Non-Agricultural Livelihoods/ Infrastructure	16	12	10	103	152
Non-Food Items	2	1	4	0	0
Nutrition	12	7	11	127	173
Peace Building/ Conflict Prevention	3	2	4	22	19
Private Sector Development	0	0	0	0	0
Protection	14	10	11	22	28
Shelter	2	2	3	4	1
WASH	15	10	10	96	149
<b>Grand Total (All Sectors)</b>	<b>141 (19%)</b>	<b>58 (28%)</b>	<b>17 (100%)</b>	<b>578 (56%)</b>	<b>1,302 (33%)</b>
	<b>% of Total Countrywide</b>		<b>% of Total in Rakhine State</b>		

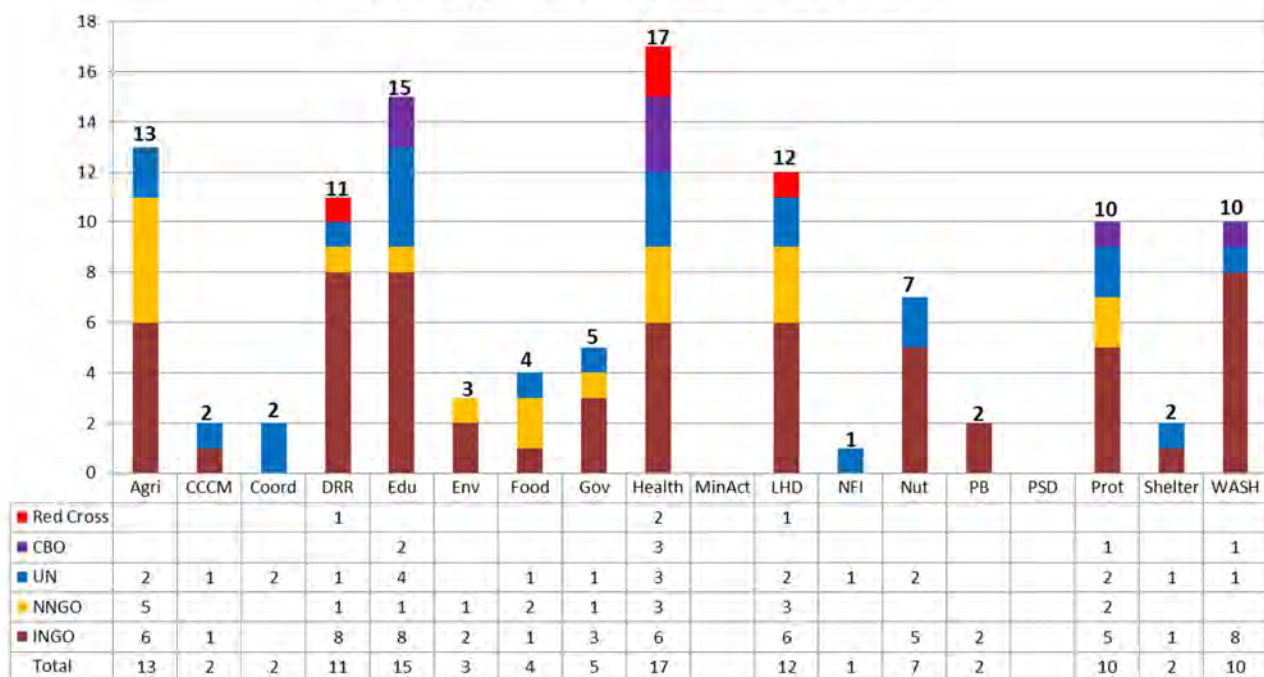
Reporting Status on the Village Tract (VT) / Village Level



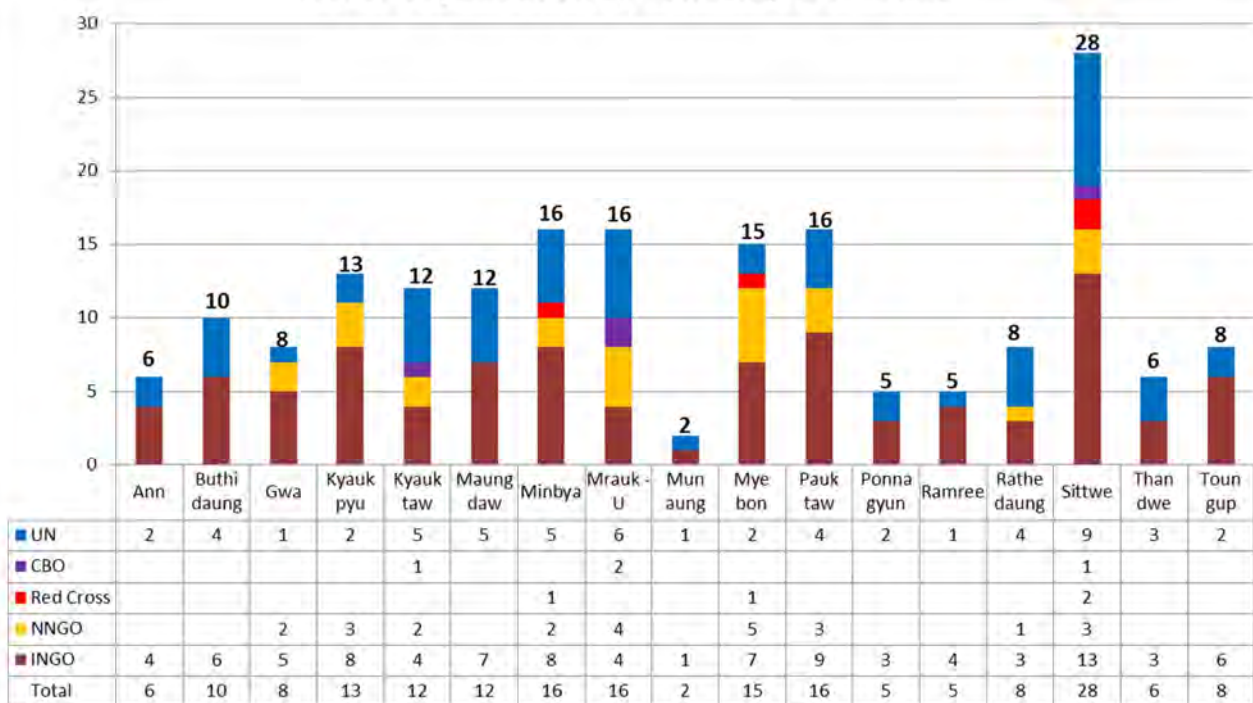
No. of Organizations by Sector and Township in RAKHINE (as of March 25, 2015)

Township	Agriculture	CCCM	Coordination	Disaster Risk Reduction	Education	Environment	Food	Governance	Health	Mine Action	Non-Agricultural Livelihoods/ Infrastructure	Non-Food Items	Nutrition	Peace Building/ Conflict Prevention	Private Sector Development	Protection	Shelter	WASH	Tsp-Total Orgs
Ann		1		1	1				4		1						1		6
Buthidaung	3			1	3		3		5		3	1	3	1		2		2	10
Gwa					1	2		1	4										8
Kyaukpyu	4			2	1				3				1			2		1	13
Kyauktaw	1				1				4		2		3					2	12
Maungdaw	3			2	4		2		6		4	1	4	1		1	1	2	12
Minbya	3			2	3				4		4		3			2			16
Mrauk-U	3				4			1	6		2		2	1		3		2	16
Munaung									2										2
Myebon	6			4	1	1			1		3		3			3			15
Pauktaw	4			1	1	1			4		2		3			3		2	16
Ponnagyun									3							1		1	5
Ramree					2			1	2										5
Rathedaung					3	1	1		2		1	1	1	1		1		2	8
Sittwe	3	1	1	5	2	1	2	2	11		3		3			5		4	28
Thandwe					1		2		3			1				2	1		6
Toungup				3	3			1	3				1					2	8
Not Specified			1	1	1	1		1	1							1			1
<b>Sector Total</b>	<b>13</b>	<b>2</b>	<b>2</b>	<b>11</b>	<b>15</b>	<b>3</b>	<b>4</b>	<b>5</b>	<b>17</b>		<b>12</b>	<b>1</b>	<b>7</b>	<b>2</b>		<b>10</b>	<b>2</b>	<b>10</b>	

### No. of Organizations by Sector in Rakhine



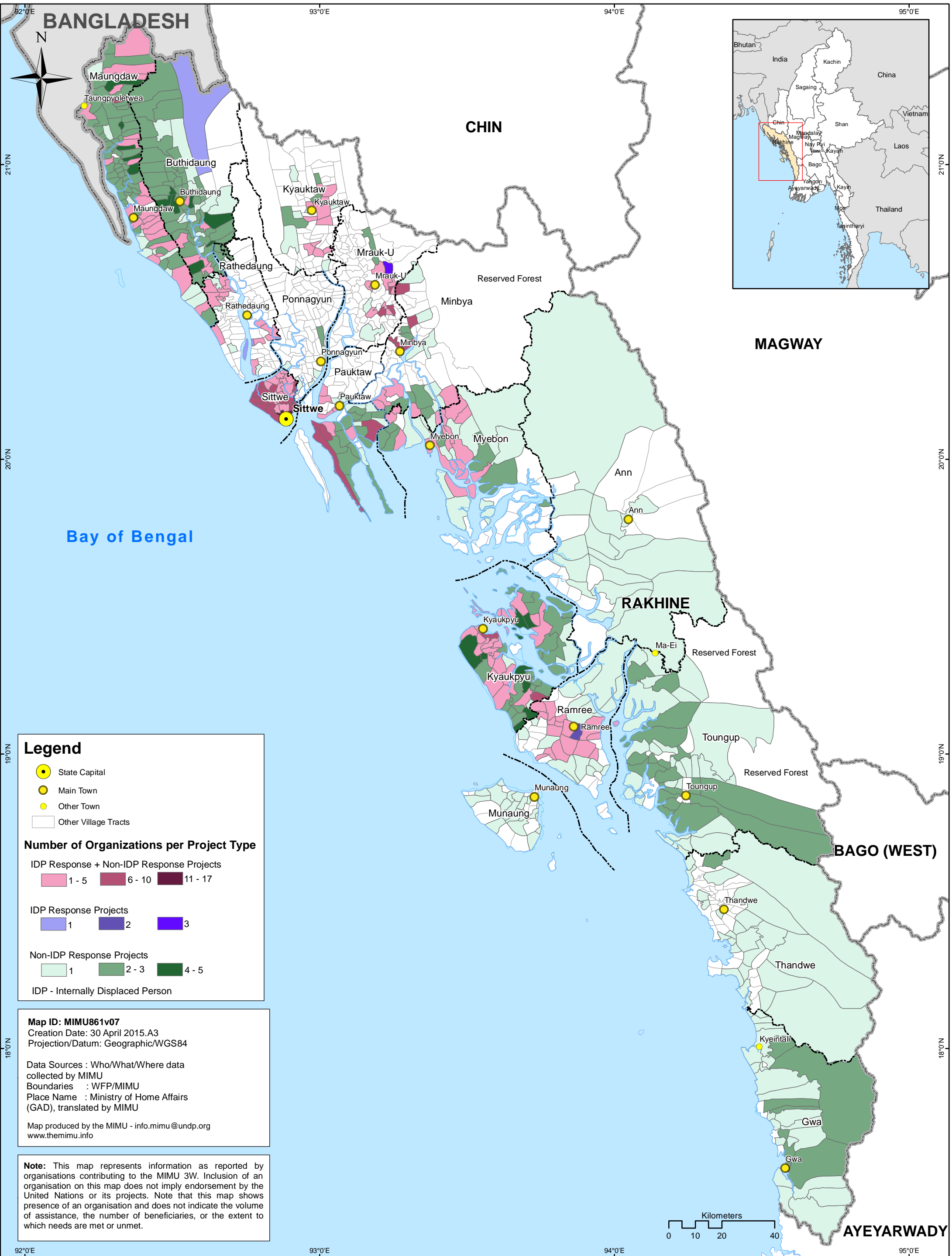
### No. of Organization by Township in Rakhine





# Projects by Beneficiary Type - Rakhine State

Reported to the MIMU, March 25, 2015 (Village Tract Level)





RAKHINE STATE - Organizations' Presence at Township Level by Sector  
Projects Under Implementation as of Mar 25, 2015



Township	Township Pcode	Agriculture	CCCM	Coordinat ion	Disaster Risk Reduction	Education	Environment	Food	Governance	Health	Logist ics	Mine Action	NonAgricultural Livelihoods Infrastructure	NonFood Items	Nutrition	Peace Building/ Conflict Prevention	Private Sector Development	Protection	Shelter	WASH	Count of Orgs.
Ann	MMR012014		LWF		LWF	LWF				PSI, UNICEF, UNFPA, URC			RI						LWF		6
Buthidaung	MMR012010	ACF, CARE, UNHCR			CARE	CARE, CFSI, WFP		WFP		ACF, Malteser, MSF-H, UNICEF, WHO			ACF, CARE, UNHCR	UNHCR	ACF, UNICEF, WFP	CFSI		UNHCR, Tdh-L		ACF, CARE	9
Gwa	MMR012017					BAJ	DCA, WCS		COM	MNMA, PSI, UNICEF, URC											8
Kyaukpyu	MMR012011	BLO, IRC, MSN, RTA	UNHCR		PLAN, UN- Habitat	BAJ		WFP		PSI, UNICEF, URC				UNHCR	SCI			UNICEF, UNHCR, Tdh-L	UNHCR	OXFAM, UNICEF	15
Kyauktaw	MMR012004	FAO	UNHCR			BIMM		WFP		KTCare, MSF-H, UNICEF, WHO			KBC (Kayin), UNDP	UNHCR	CDN, UNICEF, WFP			UNHCR	UNHCR	ABCD, OXFAM	13
Maungdaw	MMR012009	ACF, CARE, UNHCR			CARE, ACTED	CARE, CFSI, UNHCR, WFP		WFP		ACF, Malteser, MSF-H, PSI, UNICEF, WHO			ACF, CARE, UNDP, UNHCR	UNHCR	ACF, CARE, UNICEF, WFP	CFSI		UNICEF	UNHCR	ACF, CARE	11
Minbya	MMR012005	FAO, IRC, SCI	UNHCR		ACTED, IFRC	BAJ, STM, UNICEF		WFP		KTCare, MERCY, PSI, UNICEF, WHO			IRC, SCI, STM, UNDP	UNHCR	CDN, UNICEF, WFP			PLAN, UNHCR, Tdh-L	UNHCR	CDN	18
Mrauk-U	MMR012003	FAO, MEET, RI	LWF, UNHCR		LWF	ABCD, BIMM, UNICEF, Laywaddy		WFP	SCI	ABCD, KTCare, MERCY, UNICEF, UNFPA, WHO, Laywaddy			RMO, UNDP	UNHCR	CDN, UNICEF, WFP	RI		ABCD, MEET, UNHCR, MPSWA	LWF, UNHCR	ABCD, CDN	19
Munaung	MMR012012									UNICEF, URC											2
Myebon	MMR012006	IRC, MEET, MERN, RTA, SCI, IUCN	UNHCR		ACTED, CACH, IFRC, KMSS	BIMM, UNICEF	MERN	WFP		UNICEF, UNFPA, WHO			IRC, SCI, STM	UNHCR	SCI, UNICEF, WFP			MEET, RI, UNICEF, UNHCR, Tdh-L	UNHCR	RI	19
Pauktaw	MMR012007	FAO, IRC, RTA, SCI	UNHCR		ACTED	BIMM, UNICEF	MERN	WFP		IRC, KTCare, MSF-H, MERCY, UNICEF, UNFPA, WHO			SCI, UNDP	UNHCR	SCI, UNICEF, WFP			DRC, SCI, UNICEF, UNHCR, Tdh-L	LWF, UNHCR	SCI, Solidarites, UNICEF	20
Ponnagyun	MMR012002									PSI, UNICEF, UNFPA								Tdh-L		IRC	5
Ramree	MMR012013		UNHCR			BAJ, PCF		WFP	AAM	UNICEF, URC				UNHCR				UNHCR	UNHCR	UNICEF	7
Rathedaung	MMR012008					CFSI, UNHCR, WFP	MERN	WFP		IRC, MERCY, UNICEF, UNFPA, WHO			IRC, UNHCR	UNHCR	UNICEF	CFSI		UNHCR		IRC, Solidarites, UNICEF	10
Sittwe	MMR012001	FAO, RTA, RI	DRC, IOM, LWF, UNHCR	UNOCHA	ACTED, ACF, LWF, OXFAM, PLAN, UN- Habitat	BIMM, UNICEF	MERN	WFP	SCI, UNDP	ACF, ICRC, IRC, IFRC, MSF-H, MERCY, MPG, MRCS, PSI, UNICEF, UNFPA, UA, WHO			DRC, IFRC, UNDP	UNHCR	ACF, CDN, SCI, UNICEF, WFP			ACF, DRC, IRC, LWF, PLAN, SCI, UNICEF, UNHCR, UNFPA, Tdh-L	UNHCR	ACF, CDN, DRC, OXFAM, SCI, Solidarites, UNICEF	33
Thandwe	MMR012015					BAJ		WFP		PSI, UNICEF, URC				UNHCR				UNICEF, UNHCR	UNHCR		6
Toungup	MMR012016				DRC, PLAN, UN- Habitat	BAJ, DRC, PLAN			SCI	PSI, UNICEF, URC					PLAN					DRC, PLAN	8
Not Specified				UNFPA	UN- Habitat	UNESCO	MERN		NPA	UNFPA								NPA			5



RAKHINE STATE - Organizations' Presence at Township Level by Sector  
Projects Under Implementation as of Mar 25, 2015



Township	Township Pcode	Agriculture	CCCM	Coordinat ion	Disaster Risk Reduction	Education	Environment	Food	Governance	Health	Logist ics	Mine Action	NonAgricultural Livelihoods Infrastructure	NonFood Items	Nutrition	Peace Building/ Conflict Prevention	Private Sector Development	Protection	Shelter	WASH	Count of Orgs.
Ann	MMR012014		LWF		LWF	LWF				PSI, UNICEF, UNFPA, URC			RI						LWF		6
Buthidaung	MMR012010	ACF, CARE, UNHCR			CARE	CARE, CFSI, WFP		WFP		ACF, Malteser, MSF-H, UNICEF, WHO			ACF, CARE, UNHCR	UNHCR	ACF, UNICEF, WFP	CFSI		UNHCR, Tdh-L		ACF, CARE	9
Gwa	MMR012017					BAJ	DCA, WCS		COM	MNMA, PSI, UNICEF, URC											8
Kyaukpyu	MMR012011	BLO, IRC, MSN, RTA	UNHCR		PLAN, UN- Habitat	BAJ		WFP		PSI, UNICEF, URC				UNHCR	SCI			UNICEF, UNHCR, Tdh-L	UNHCR	OXFAM, UNICEF	15
Kyauktaw	MMR012004	FAO	UNHCR			BIMM		WFP		KTCare, MSF-H, UNICEF, WHO			KBC (Kayin), UNDP	UNHCR	CDN, UNICEF, WFP			UNHCR	UNHCR	ABCD, OXFAM	13
Maungdaw	MMR012009	ACF, CARE, UNHCR			CARE, ACTED	CARE, CFSI, UNHCR, WFP		WFP		ACF, Malteser, MSF-H, PSI, UNICEF, WHO			ACF, CARE, UNDP, UNHCR	UNHCR	ACF, CARE, UNICEF, WFP	CFSI		UNICEF	UNHCR	ACF, CARE	11
Minbya	MMR012005	FAO, IRC, SCI	UNHCR		ACTED, IFRC	BAJ, STM, UNICEF		WFP		KTCare, MERCY, PSI, UNICEF, WHO			IRC, SCI, STM, UNDP	UNHCR	CDN, UNICEF, WFP			PLAN, UNHCR, Tdh-L	UNHCR	CDN	18
Mrauk-U	MMR012003	FAO, MEET, RI	LWF, UNHCR		LWF	ABCD, BIMM, UNICEF, Laywaddy		WFP	SCI	ABCD, KTCare, MERCY, UNICEF, UNFPA, WHO, Laywaddy			RMO, UNDP	UNHCR	CDN, UNICEF, WFP	RI		ABCD, MEET, UNHCR, MPSWA	LWF, UNHCR	ABCD, CDN	19
Munaung	MMR012012									UNICEF, URC											2
Myebon	MMR012006	IRC, MEET, MERN, RTA, SCI, IUCN	UNHCR		ACTED, CACH, IFRC, KMSS	BIMM, UNICEF	MERN	WFP		UNICEF, UNFPA, WHO			IRC, SCI, STM	UNHCR	SCI, UNICEF, WFP			MEET, RI, UNICEF, UNHCR, Tdh-L	UNHCR	RI	19
Pauktaw	MMR012007	FAO, IRC, RTA, SCI	UNHCR		ACTED	BIMM, UNICEF	MERN	WFP		IRC, KTCare, MSF-H, MERCY, UNICEF, UNFPA, WHO			SCI, UNDP	UNHCR	SCI, UNICEF, WFP			DRC, SCI, UNICEF, UNHCR, Tdh-L	LWF, UNHCR	SCI, Solidarites, UNICEF	20
Ponnagyun	MMR012002									PSI, UNICEF, UNFPA								Tdh-L		IRC	5
Ramree	MMR012013		UNHCR			BAJ, PCF		WFP	AAM	UNICEF, URC				UNHCR				UNHCR	UNHCR	UNICEF	7
Rathedaung	MMR012008					CFSI, UNHCR, WFP	MERN	WFP		IRC, MERCY, UNICEF, UNFPA, WHO			IRC, UNHCR	UNHCR	UNICEF	CFSI		UNHCR		IRC, Solidarites, UNICEF	10
Sittwe	MMR012001	FAO, RTA, RI	DRC, IOM, LWF, UNHCR	UNOCHA	ACTED, ACF, LWF, OXFAM, PLAN, UN- Habitat	BIMM, UNICEF	MERN	WFP	SCI, UNDP	ACF, ICRC, IRC, IFRC, MSF-H, MERCY, MPG, MRCS, PSI, UNICEF, UNFPA, UA, WHO			DRC, IFRC, UNDP	UNHCR	ACF, CDN, SCI, UNICEF, WFP			ACF, DRC, IRC, LWF, PLAN, SCI, UNICEF, UNHCR, UNFPA, Tdh-L	UNHCR	ACF, CDN, DRC, OXFAM, SCI, Solidarites, UNICEF	33
Thandwe	MMR012015					BAJ		WFP		PSI, UNICEF, URC				UNHCR				UNICEF, UNHCR	UNHCR		6
Toungup	MMR012016				DRC, PLAN, UN- Habitat	BAJ, DRC, PLAN			SCI	PSI, UNICEF, URC					PLAN					DRC, PLAN	8
Not Specified				UNFPA	UN- Habitat	UNESCO	MERN		NPA	UNFPA								NPA			5

# **RAKHINE - Summary of Organizations' Sub Sectors Interventions** **Non-IDP Response Projects Under Implementation as of March 25, 2015**

Sector_Cluster	Sub Sector	No. of Projects	No. of Organizations	No. of Townships	No. of Village Tracts/ Towns	No. of Villages/ Wards
Agriculture	Agricultural Extension	1	2	2	21	21
	Agricultural Inputs	6	3	7	85	197
	Agriculture Development	4	3	7	137	302
	Agriculture Water Resources	2	1	2	38	103
	Capacity Building (Agricultural Livelihood)	3	3	7	36	69
	Fisheries	4	5	5	65	90
	Forestry	3	2	3	48	120
	Livestock and poultry	1	1	1	11	27
	Plant Production	1	1	1	1	2
	Provision of paddy plantation & cultivation	3	4	6	35	46
<b>Sector Total (AGRICULTURE)</b>		<b>14</b>	<b>13</b>	<b>9</b>	<b>207</b>	<b>430</b>
CCCM	Camp Management	1	1	1	2	1
	Capacity Building and Training	2	2	2	2	1
<b>Sector Total (CCCM)</b>		<b>2</b>	<b>2</b>	<b>2</b>	<b>2</b>	<b>1</b>
Coordination	General Coordination	1	1	1	1	1
	Information Management	2	2	1	1	1
<b>Sector Total (COORDINATION)</b>		<b>2</b>	<b>2</b>	<b>1</b>	<b>1</b>	<b>1</b>
Disaster Risk Reduction	Community based Disaster Preparedness and Risk Reduction	9	8	8	86	149
	Hazard, vulnerability and risk assessment	2	2	5	3	6
	Policy and institutional development	2	1	3		
	Preparedness and Response Programs	6	5	7	13	20
	Public Awareness, Education and Training	4	3	3	9	12
<b>Sector Total (Disaster Risk Reduction)</b>		<b>16</b>	<b>11</b>	<b>9</b>	<b>90</b>	<b>155</b>
Education	Early Childhood Development	4	4	4	22	22
	Food for Education	1	1	3	156	3
	Non-Formal Education	3	3	6		
	Quality Basic Education/Formal Education	12	9	11	99	130
<b>Sector Total (EDUCATION)</b>		<b>20</b>	<b>15</b>	<b>15</b>	<b>205</b>	<b>146</b>
<b>Sector Total (ENVIRONMENT) "No sub sector in Environment"</b>		<b>5</b>	<b>3</b>	<b>5</b>	<b>19</b>	<b>23</b>
Food	Food For Work	1	2	2	8	1
	General Food Distribution	1	2	3	162	3
<b>Sector Total (FOOD)</b>		<b>1</b>	<b>4</b>	<b>5</b>	<b>166</b>	<b>4</b>



# **RAKHINE - Summary of Organizations' Sub Sectors Interventions** **Non-IDP Response Projects Under Implementation as of March 25, 2015**

Sector_Cluster	Sub Sector	No. of Projects	No. of Organizations	No. of Townships	No. of Village Tracts/ Towns	No. of Villages/ Wards
Governance	Access to Justice	2	2	1	3	3
	Economic and Development policy/planning	2	2	1		
	Elections	1	1	1	1	
	Human Rights Promotion and Advocacy	3	3	2	18	30
	Institutional Strengthening and Public Administration Reform	1	1	1		
	Media and flow of Information	1	1	1		
	Rule of Law	1	1			
	Strengthening civil society	2	2	4	5	4
<b>Sector Total (GOVERNANCE)</b>		<b>9</b>	<b>5</b>	<b>5</b>	<b>22</b>	<b>34</b>
Health	Basic Health Care	8	7	8	124	287
	Control of Communicable Diseases	1	1	4		
	Health Education	5	4	7	43	102
	HIV/AIDS Programme	10	6	10		
	Malaria Programme	6	4	8	181	354
	Mental Health and Psychosocial Support	2	1	3	19	29
	Reproductive Health Care	4	4	12	17	22
	TB Programme	2	2	3	46	132
	Women and Child Health	3	1	17		
<b>Sector Total (HEALTH)</b>		<b>30</b>	<b>17</b>	<b>17</b>	<b>316</b>	<b>700</b>
Non-Agricultural Livelihoods/ Infrastructure	Income Generation	5	5	8	50	78
	Micro-Finance	1	1	3	12	16
	Rehabilitation-Community Infrastructure & Facility	7	5	7	32	20
	Social Recovery	4	4	7	46	99
	Vocational Education and Training	3	2	3	30	
<b>Sector Total (NON-ARGRICULTURAL LIVELIHOODS/ INFRASTRUCTURE)</b>		<b>16</b>	<b>12</b>	<b>10</b>	<b>103</b>	<b>152</b>
NonFoodItems	NFI Assessment	1	1	1		
	NFI Coordination	1	1	1		
	NFI distribution	1	1	3		
<b>Sector Total (NON-FOOD ITEMS)</b>		<b>2</b>	<b>1</b>	<b>4</b>		

# **RAKHINE - Summary of Organizations' Sub Sectors Interventions** **Non-IDP Response Projects Under Implementation as of March 25, 2015**

Sector_Cluster	Sub Sector	No. of Projects	No. of Organizations	No. of Townships	No. of Village Tracts/ Towns	No. of Villages/ Wards
Nutrition	Infant and young child feeding	5	4	9	34	57
	Inpatient Therapeutic Programme (ITP)	2	2	3	2	
	Multiple Micronutrient Supplementation	2	1	5		
	Nutrition Assessment with MUAC	2	2	6	27	91
	Nutrition Survey	2	2	4	16	19
	Outpatient Therapeutic Programme (OTP)	5	2	8	16	12
	Supplementary Feeding	3	3	8	77	18
<b>Sector Total (NUTRITION)</b>		<b>12</b>	<b>7</b>	<b>11</b>	<b>127</b>	<b>173</b>
Peace Building/ Conflict Prevention	Support for durable solutions for returnees	2	1	3	22	19
<b>Sector Total (PEACE BUILDING/ CONFLICT PREVENTION)</b>		<b>3</b>	<b>2</b>	<b>4</b>	<b>22</b>	<b>19</b>
Protection	Awareness Raising on Protection Issues	1	1	1		
	Child Protection	9	5	10	12	9
	Child Protection in Emergencies	1	1	2	4	3
	Promoting Gender Equality and Empowerment of Women	1	1			
	Protection assessment	2	1	3		
	Psychosocial Activities (Other than CFS)	1	1	1	5	5
	Vulnerable Populations in Emergencies	1	1	2	7	15
<b>Sector Total (PROTECTION)</b>		<b>14</b>	<b>10</b>	<b>11</b>	<b>22</b>	<b>28</b>
Shelter	Shelter Assessment	1	1	1		
	Shelter Coordination	1	1	1		
	Shelter Support	2	2	2	4	1
<b>Sector Total (SHELTER)</b>		<b>2</b>	<b>2</b>	<b>3</b>	<b>4</b>	<b>1</b>
WASH	Assessment/Studies	3	3	4	36	51
	Environmental Sanitation	2	1	3	4	8
	Excreta Disposal/Treatment/Management – Communal/Institutions	5	4	7	41	42
	Excreta Disposal/Treatment/Management – Household Level	4	3	4	22	18
	Hygiene Promotion & Behaviour Change	10	9	10	83	127
	Water Supply - Community	8	7	9	50	55
	Water Supply – Household Level	4	3	5	20	12
	Water Supply - Institutions	2	2	3	23	32
<b>Sector Total (WASH)</b>		<b>15</b>	<b>10</b>	<b>10</b>	<b>96</b>	<b>149</b>
<b>Grand Total (All Sectors)</b>		<b>141 (19%)</b>	<b>58 (28%)</b>	<b>17 (100%)</b>	<b>578 (56%)</b>	<b>1,302 (33%)</b>
		<b>% of Countrywide</b>		<b>% of Total in Rakhine State</b>		