

Overview of the April 2014 3W MON State

The MIMU 3W gathers inputs from participating agencies on Who is doing What, Where in Myanmar. It is currently conducted every 6 months.

174 agencies participated in the April 14 3W, providing information on their activities in 18 sectors and 133 sub-sectors which have been defined by technical/sector working groups. There is still likely to be under-reporting of the specific activities of field-based local NGOs and CBOs.

This overview of the reported 3W results in Mon describes projects under implementation as of April 28, 2014. Further information on proposed and recently completed projects is available from the 3W dataset, published on the MIMU website.

1. Active Organizations in Mon

A total of 49 organizations reported projects under implementation in Mon. The majority are NGOs (37 agencies, 7 of whom are border-based). There is some level for agency activity reported in most village tracts, with agencies more concentrated in Mawlamyine, Thaton, Bilin and Ye townships.

Org. Type	INGO	NNGO	UN	Red Cross	CBO*	Donor	Embassy	BBO*	Total
Countrywide	76	60	13	4	2	1	1	17	174
Mon	22	8	9	1	1	1		7	49
BBO* - Border-based Organization					CBO* - Community Based Organization				

2. Projects by Sector

120 projects were reported in 13 sectors (17% of the total projects reported to the 3W). The ranking of project interventions mirrors that for the rest of the South East, though the sub-sector focus within the sectors may be different. The MIMU Place Code database lists 1,183 villages in total across the state, 78% of which have GPS coordinates and can be mapped.

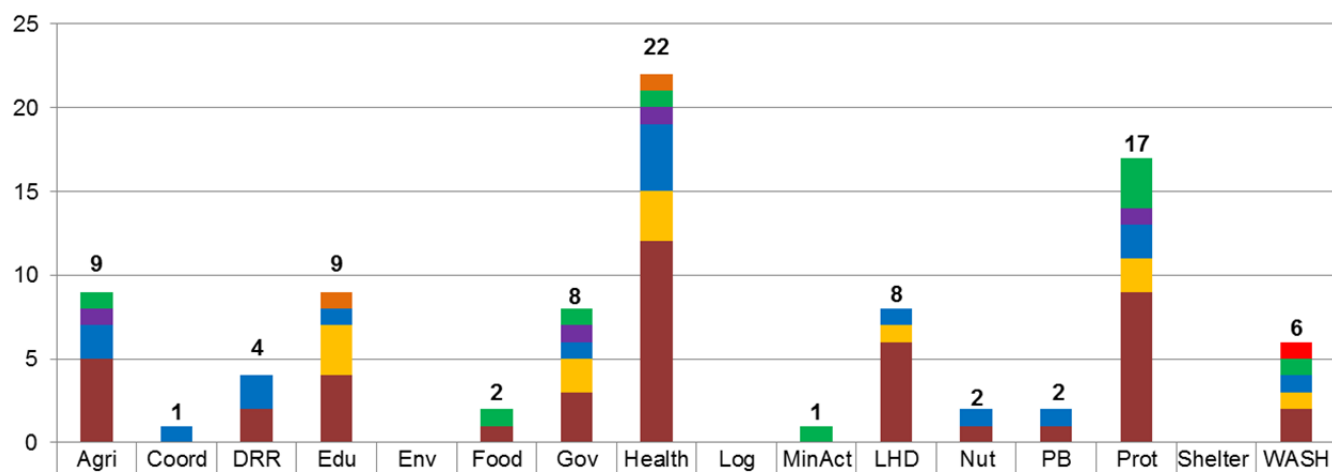
- Health is the most widespread intervention with 22 organizations reportedly implementing 53 projects in 767 villages. There is some level of health activity in all 10 townships, though more concentrated in the townships of Mawlamyine, Thaton, Ye and Thanbyuzayat. The majority of health interventions are Malaria Programme (370 villages), Reproductive Health Care (345 villages), Health Education (272 villages), TB Programme (254 villages), and HIV/AIDS Programme (206 villages).
- Protection is the second most commonly reported sector with activities by 17 agencies in 169 villages, mostly in Child Protection (55 villages) and Human Trafficking and Persons with Disabilities (39 villages).
- Non-Agriculture livelihoods sector is the third main sector of agency activities in 125 villages (8 organizations), mainly through income generation in 98 villages.
- Education is the fourth main sector in Mon with organizations active in 103 villages (9 organizations), most frequently in support to NFE (49 villages), Quality Basic Education (38 villages), and ECD (31 villages).
- Agriculture is the fifth main sector of agency activities, under implementation by 9 agencies in 98 villages, mainly through Agriculture inputs (88 villages).
- There is far less attention to other sectors; DRR (4 agencies, 76 villages), WASH (6 agencies, 64 villages), Nutrition (2 agencies 44 villages), Food (2 agencies, 19 villages), Governance (8 agencies, 8 villages), Mine Action (1 agency in 1 village), Peace Building and Conflict Prevention (2 agencies in 4 townships) and Coordination (1 agency).

Overview of the April 2014 3W MON State

Summary Reports by Sector in MON State with Projects Under Implementation as of Apr 28, 14.

Sector	No. of Projects	No. of Organizations	No. of Townships	No. of Village Tract/ Town	No. of Village/Ward
Agriculture	10	9	10	49	98
Coordination	1	1			
Disaster Risk Reduction	4	4	5	51	76
Education	17	9	10	57	103
Environment					
Food	2	2	2	9	19
Governance	14	8	10	9	8
Health	53	22	10	331	767
Mine Action	1	1	2	1	1
Non-Agricultural Livelihoods/ Infrastructure	9	8	10	75	125
Nutrition	4	2	5	28	44
Peace Building/ Conflict Prevention	3	2	4		
Protection	22	17	10	102	169
Shelter					
WASH	7	6	5	33	64
Grand Total (All Sectors)	120 (17%)	49 (28%)	10 (100%)	357 (95%)	854 (67%)
	(% of Total in Countrywide)		(% of Total in Mon State)		

No. of Organizations by Sector in Mon State



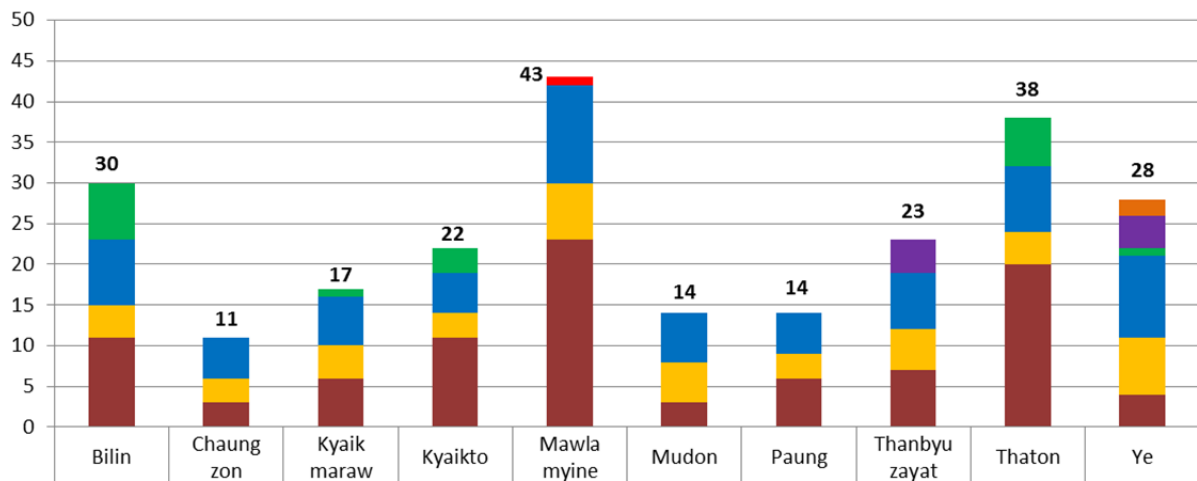
Overview of the April 2014 3W
MON State

No. of Organizations by Sector by Type of Organization (as of April 28, 2014)								
Sector	INGO	NNGO	UN	CBO*	BBO*	Red Cross	Donor	Total
Agriculture	5		2	1	1			9
Coordination			1					1
DRR	2		2					4
Education	4	3	1				1	9
Environment								
Food	1				1			2
Governance	3	2	1	1	1			8
Health	12	3	4	1	1		1	22
Logistics								
Mine Action					1			1
Non-Agricultural LH/ Infrastructure	6	1	1					8
Nutrition	1		1					2
Peace Building/ Conflict Prevention	1		1					2
Protection	9	2	2	1	3			17
Shelter								
WASH	2	1	1		1	1		6

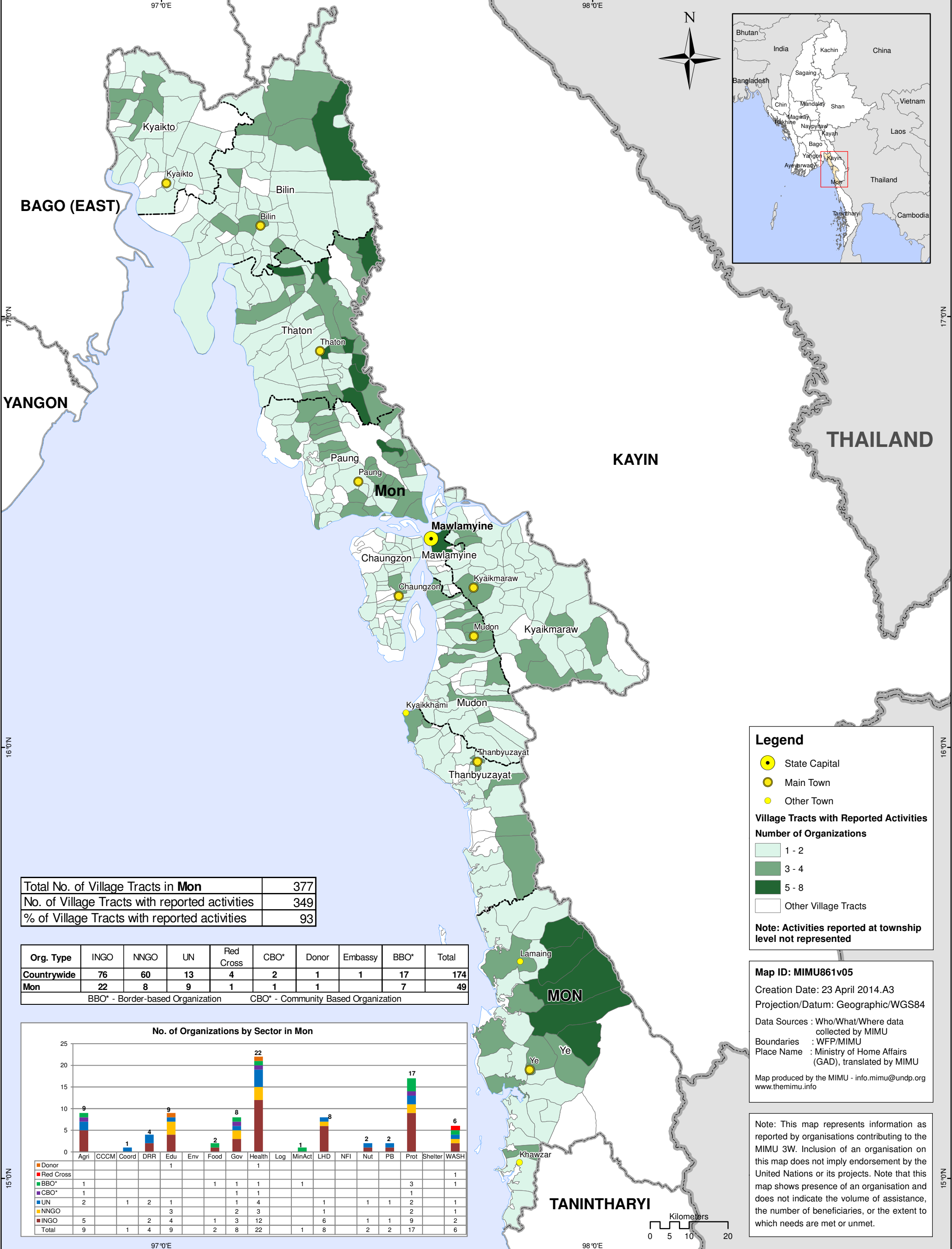
No. of Organizations by Sector and Township in Mon State (as of April 28, 2014)																	
Townships in Mon State	Agriculture	Coordination	Disaster Risk Reduction	Education	Environment	Food	Governance	Health	Logistics	Mine Action	Non-Agricultural Livelihoods/ Infrastructure	Nutrition	Peace Building/ Conflict Prevention	Protection	Shelter	WASH	State/Region Total
Bilin	3		2	2		1	2	8		1	2	1		5		3	30
Chaungzon	1			2			2	3			1			2			11
Kyaikmaraw	2			2			1	8			1		1	2			17
Kyaikto	1		1	2			2	7			1	2		5		1	22
Mawlamyine	2		1	6			3	15			3	1	2	9		1	43
Mudon	1			1			1	8			2			1			14
Paung				2			1	6			1	1		3			14
Thanbyuzayat	1			3			2	9			3			5			23
Thaton	2		1	3		2	2	10		1	2	2	1	9		3	38
Ye	2		2	3			2	10			1		1	6		1	28
Sector Total	9	1	4	9		2	8	22		1	8	2	2	17		6	

Overview of the April 2014 3W MON State

No. of Organizations by Township in Mon State



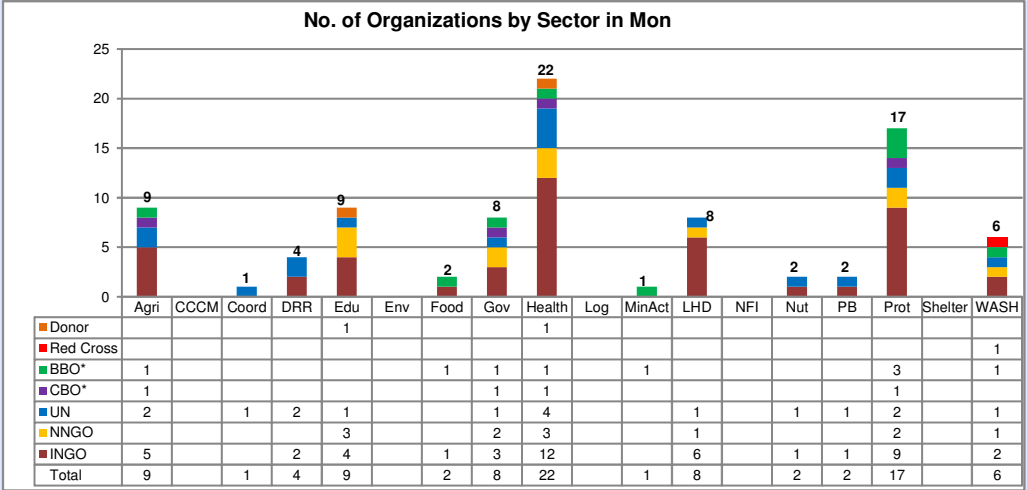
Red Cross				1					
Donor									2
CBO							4		4
BBO	7		1	3				6	1
UN	8	5	6	5	12	6	5	7	10
NNGO	4	3	4	3	7	5	3	5	7
INGO	11	3	6	11	23	3	6	7	4
Total	30	11	17	22	43	14	14	23	28



Total No. of Village Tracts in Mon	377
No. of Village Tracts with reported activities	349
% of Village Tracts with reported activities	93

Org. Type	INGO	NNGO	UN	Red Cross	CBO*	Donor	Embassy	BBO*	Total
Countrywide	76	60	13	4	2	1	1	17	174
Mon	22	8	9	1	1	1		7	49

BBO* - Border-based Organization CBO* - Community Based Organization



MON STATE - Organisation Presence at Township Level by Sector
Projects Under Implementation
March 28, 2014

Township	Township pCode	Agriculture	CCCM	Coordination	Disaster Risk Reduction	Education	Environment	Food	Governance	Health	Logistics	Mine Action	Non-agricultural livelihoods/ Infrastructure	Non-Food Items	Nutrition	Peace Building/ Conflict Prevention	Protection	Shelter	WASH	Count of Orgs.
Bilin	MMR011010	FAO, TBC (KORD), WC			IOM, WC	KBC (Kayin), UNICEF		TBC	KHRG, PTE	IOM, PSI, TBC (KWO), UNICEF, WHO, WC, WV		DCA-CM (CIDKP)	KDN, WC		WC		KHRG, NRC, PTE, SCI, Tdh-L		TBC (KORD), UNHCR, WC	19
Chaungzon	MMR011003	UNDP				KBC (Kayin), UNICEF			PTE, SCI	PSI, UNICEF, WHO			UNDP				PTE, TLMM			8
Kyaikmaraw	MMR011002	CWS, FAO				KBC (Kayin), UNICEF			PTE	AFXB, IOM, PSI, TBC (KWO), UNICEF, WHO, MAM			SCI				PTE, Tdh-L			13
Kyaikto	MMR011009	WC			WC	KBC (Kayin), UNICEF			KHRG, PTE	AFXB, IOM, PSI, UNICEF, WHO, WC, MalariaCons			WC		UNICEF, WC		KHRG, NRC, PTE, Tdh-L, TBC (KESAN)		WC	13
Mawlamyine	MMR011001	FAO, HAI			HAI	AFXB, KDN, KBC (Kayin), UNICEF, WV,			COM, PTE, UNDP	AFXB, CARE, FHI 360, HAI, IHA, IOM, MSI, MNMA, PSI, UNICEF, WHO, WFP, WV, EMW, MalariaCons			HAI, SCI, UNDP		UNICEF	IOM, NPA	AFXB, PTE, Thingaha, UNICEF, UNHCR, WV, Tdh-L, NP,		MRCS	29
Mudon	MMR011005	FAO				UNICEF			PTE	AFXB, IOM, MNMA, PSI, UNICEF, WHO, MAM			KDN, SCI				PTE			11
Not Specified				UNFPA		PDO,			DCA, NPA							NPA	NPA			6
Paung	MMR011008					AFXB, UNICEF			PTE	AFXB, PSI, UNICEF, WHO, MAM, MalariaCons			UNDP		UNICEF		AFXB, PTE, SCI			9
Thanbyuzayat	MMR011004	SCI/FLD				KBC (Kayin), UNICEF, WV			PTE, SCI/FLD	IOM, PSI, SCI/FLD, UNICEF, WHO, WV, MAM, MalariaCons			KDN, UNDP, WV				PTE, SCI/FLD, UNICEF, WV, Tdh-L			13
Thaton	MMR011007	AFXB, WC			WC	AFXB, KBC (Kayin), UNICEF		AFXB, TBC	KHRG, PTE	BIMM, IHA, IOM, MSI, MNMA, PSI, TBC (KWO), UNICEF, WHO, WC		DCA-CM (CIDKP)	DCA, WC		UNICEF, WC	NPA	KHRG, NRC, PTE, SCI, TLMM, UNICEF, UNHCR, Tdh-L, TBC (KESAN)		AFXB, UNHCR, WC	24
Ye	MMR011006	FAO, SCI/FLD			IOM, UN-Habitat	KBC (Kayin), SDC, UNICEF			PTE, SCI/FLD	IOM, KDN, MSI, PSI, SCI/FLD, SDC, UNICEF, WHO, MAM			KDN			IOM	NRC, PTE, SCI/FLD, UNHCR, Tdh-L, TBC (HURFOM)		KDN	17

MON State - Summary of Organizations' Sub Sectors Interventions Projects Under Implementation as of April 28, 2014

Sector	Sub Sector	No. of Projects	No. of Organizations	No. of Townships	No. of Village Tract/ Town	No. of Village/Ward
Agriculture	Agricultural Alternative Development	1	1	3	28	44
	Agricultural Assessment	1	1	3	28	44
	Agricultural Extension	1	1	1		
	Agricultural Inputs	4	4	5	40	88
	Agricultural Research	1	1	3	26	42
	Agriculture Development	3	3	4	31	52
	Agriculture Water Resources	1	1	1	1	
	Capacity Building (Agricultural Livelihood)	1	1	3	26	42
	Plant Production	1	1	5	1	1
	Provision of paddy plantation & cultivation	2	2	3	6	5
Sector Total (AGRICULTURE)		10	9	10	49	98
Coordination	Information Management	1	1			
Sector Total (COORDINATION)		1	1			
Disaster Risk Reduction	Community based Disaster Preparedness and Risk Reduction	2	2	3	26	35
	Policy and institutional development	1	1	1		
	Public Awareness, Education and Training	1	1	3	26	42
Sector Total (DISASTER RISK REDUCTION)		4	4	5	51	76
Education	Early Childhood Development	3	3	10	20	31
	Non-Formal Education	11	7	10	31	49
	Quality Basic Education/Formal Education	4	4	10	13	38
Sector Total (EDUCATION)		17	9	10	57	103
Food	General Food Distribution	2	2	2	9	19
Sector Total (FOOD)		2	2	2	9	19
Governance	Access to Justice	1	1			
	Economic and Development policy/planning	1	1	1		
	Elections	1	1	1	1	
	Human Rights Monitoring	1	1	3		
	Human Rights Promotion and Advocacy	4	3	4	1	
	Institutional Strengthening and Public Administration Reform	1	1	1		
	Media and flow of Information	1	1	1		
	Monitoring & Reporting Mechanism on GCRV	1	1	3		
	Rule of Law	1	1			
	Strengthening civil society	8	7	10	9	8
Sector Total (GOVERNANCE)		14	8	10	9	8

MON State - Summary of Organizations' Sub Sectors Interventions Projects Under Implementation as of April 28, 2014

Sector	Sub Sector	No. of Projects	No. of Organizations	No. of Townships	No. of Village Tract/ Town	No. of Village/Ward
Health	Basic Health Care	5	4	5	49	89
	Community Home Based Care	3	3	4	30	51
	Control of Communicable Diseases	4	4	10	71	142
	Coordination	1	1	3	23	40
	Disease surveillance	2	2	4		
	Health Assessment	1	1	1	1	
	Health Education	7	4	6	113	272
	HIV/AIDS Programme	12	11	10	160	206
	Malaria Programme	9	7	10	228	370
	Reproductive Health Care	9	6	10	211	345
	Revitalization of existing HS - HR	1	1	1		
	Revitalization of existing HS - Infrastructure	1	1	1	1	1
	Revitalization of existing HS- Equipment&Supplies	1	1	1		
	TB Programme	6	6	10	206	254
	Vector control methods	1	1	3	26	39
	Women and Child Health	6	5	10	37	58
Sector Total (HEALTH)		53	22	10	331	767
Mine Action	Mine-Risk Education	1	1	2	1	1
Sector Total (MINE ACTION)		1	1	2	1	1
Non-Agricultural Livelihoods/ Infrastructure	Cash for work	1	1	3	30	40
	Income Generation	4	4	6	63	98
	Micro-Finance	1	1	3	5	11
	Rehabilitation-Community Infrastructure & Facility	3	2	5	4	7
	Social Recovery	1	1	4	30	40
	Vocational Training	2	2	4	34	49
Sector Total (NON-AGRICULTURAL LIVELIHOODS/ INFRASTRUCTURE)		9	8	10	75	125
Nutrition	Inpatient Therapeutic Programme (ITP)	1	1	1		
	Monitoring Breast Milk Substitutes	1	1	1		
	Multiple Micronutrient Supplementation	2	2	4	28	44
	Nutrition Assessment with W/H	1	1	3	28	44
	Nutrition Survey	1	1	3	26	42
	Supplementary Feeding	1	1	3	26	42
Sector Total (NUTRITION)		4	2	5	28	44

MON State - Summary of Organizations' Sub Sectors Interventions Projects Under Implementation as of April 28, 2014

Sector	Sub Sector	No. of Projects	No. of Organizations	No. of Townships	No. of Village Tract/ Town	No. of Village/Ward
Peace Building/ Conflict Prevention	Conflict transformation and Peacebuilding	3	2	4		
Sector Total (PEACE BUILDING/ CONFLICT PREVENTION)		3	2	4		
Protection	Awareness Raising on Protection Issues	3	3	5	6	14
	Child Protection	6	4	6	35	55
	Civil Documentation	1	1	4	18	35
	Community Based Protection (Groups)	1	1	1		
	Family Tracing	1	1	7		
	Gender Based Violence	3	3	3	3	
	Housing, Land and Property (IDP, returnee)	1	2	3	3	
	Human Trafficking	2	2	2	26	39
	Persons with Disabilities	1	1	2	25	39
	Promoting Gender Equality and Empowerment of Women	3	3	10	5	5
	Protection Assessment	1	1	1	1	
Sector Total (PROTECTION)		22	17	10	102	169
WASH	Construction & Rehabilitation -Sanitation Facility	2	1	1		
	Construction & Rehabilitation -Water Facility	2	2	2	4	4
	Environmental Sanitation	1	1	1	4	19
	Hygiene Promotion	3	2	4	26	42
	Safe Water Supply	1	1	1		
Sector Total (WASH)		7	6	5	33	64
Grand Total (All Sectors)		120 (17%)	49 (28%)	10 (100%)	357 (95%)	854 (67%)
		(% of Total in Countrywide)		(% of Total in Mon)		