

Overview of the October 2013 3W

KAYAH

The MIMU 3W gathers inputs from participating agencies on Who is doing What, Where in Myanmar. It is currently conducted every 6 months.

159 agencies participated in the October 13 3W, providing information on their activities in 18 sectors and 133 sub-sectors which have been defined by technical/sector working groups. There is still likely to be under-reporting of the specific activities of field-based local NGOs and CBOs.

This overview of the reported 3W results in Kayah describes **projects under implementation** as of October 23, 2013. Further information on planned and recently completed projects is available from the 3W dataset, published on the MIMU website or available through our offices.

1. Active Organizations in Kayah

A total of 32 organizations reported projects under implementation in Kayah. The majority are NGOs/CBOs with one border-based organization. There is some level of agency activity reported in most village tracts, with agencies more concentrated in Demoso, Loikaw and Hpruso townships.

Org. Type	INGO	NNGO	UN	Red Cross	CBO*	Donor	Embassy	BBO*	Total
Countrywide	74	56	13	3	3	2	1	7	159
Kayah	18	6	5	1	1			1	32
BBO* - Border-based Organization CBO* - Community Based Organization									

2. Projects by Sector

81 projects were reported in 14 sectors (12% of the total projects reported to the 3W). In terms of the frequency of project interventions:

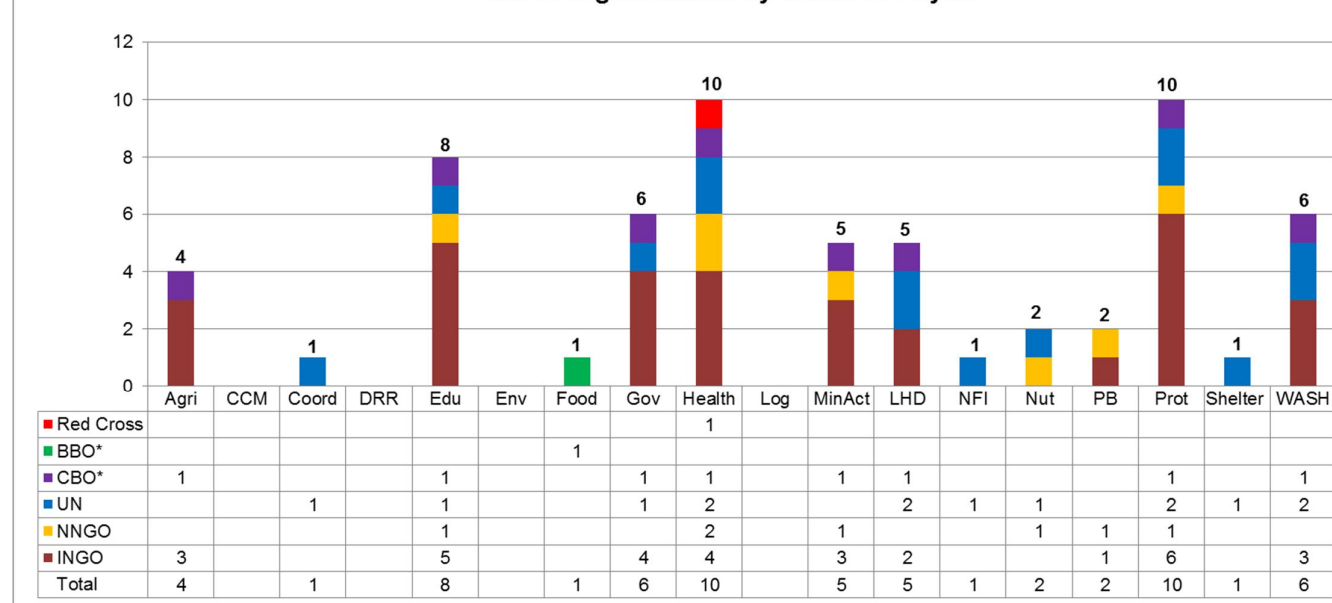
- Protection is the most widespread intervention with 10 organizations reportedly implementing 13 projects in 187 villages. The majority are focused on Civil Documentation (121 villages), Housing, Land and Property for IDPs/returnees (74 villages) and Child Protection (51 villages). Protection activities are found in all 7 townships but most concentrated in Demoso and Loikaw.
- Health is the second most widespread intervention with 10 organizations reportedly implementing 23 projects in 150 villages. There is some level of health activity in all 7 townships, though more concentrated in the townships of Demoso and Loikaw. The majority of health interventions are Malaria Programme (90 villages), Women and Child Health (67 villages), Health Education (45 villages) and TB Programme (36 villages).
- WASH is the third main sector of agency activities, reportedly through 6 projects under implementation in 136 villages. The majority of WASH interventions are Construction & Rehabilitation of Water Facilities (111 villages) and of Sanitation Facilities (90 villages).
- Agriculture is the fourth main sector with agency activities in 103 villages, mostly in Agriculture Water Resources (38 villages) and Agricultural Extension (33 villages).
- Non-Agricultural livelihoods is the fifth main sector with agency activities in 92 villages, mostly in Income Generation (79 villages), Social Recovery (69 villages), Cash for work and Vocational Training (40 villages).
- Education is the sixth main sector in Kayah with organizations active in 90 villages (8 organizations), most frequently in support to ECD (65 villages).
- There is far less attention to other sectors; Mine Action (5 agencies, 39 villages), Governance (6 agencies, 34 villages), Peace Building and Conflict Prevention (2 agencies, 14 villages), Non-Food Items (1 agency, 3 villages), Nutrition (2 agencies) and Shelter and Coordination (1 agency).

Overview of the October 2013 3W KAYAH

Summary Report by Sector in Kayah State with Projects Under Implementation as of October 23, 2013

Sector	No. of Projects	No. of Organizations	No. of Township	No. of Village Tracts/Towns	No. of Villages/Wards
Agriculture	5	4	3	30	103
CCCM					
Coordination	1	1			
Disaster Risk Reduction					
Education	13	8	3	29	90
Environment					
Food	1	1	3	8	
Governance	10	6	7	25	34
Health	23	10	7	49	150
Logistics					
Mine Action	6	5	6	16	39
Non-Agricultural Livelihoods/ Infrastructure	6	5	6	39	92
Non-Food Items	3	1	3	2	3
Nutrition	2	2	4		
Peace Building/ Conflict Prevention	3	2	7	13	14
Protection	13	10	7	69	187
Shelter	1	1	6		
WASH	6	6	4	36	136
Grand Total (All Sectors)	81 (12%)	32 (20%)	7 (100%)	71 (96%)	345 (67%)

No. of Organizations by Sector in Kayah

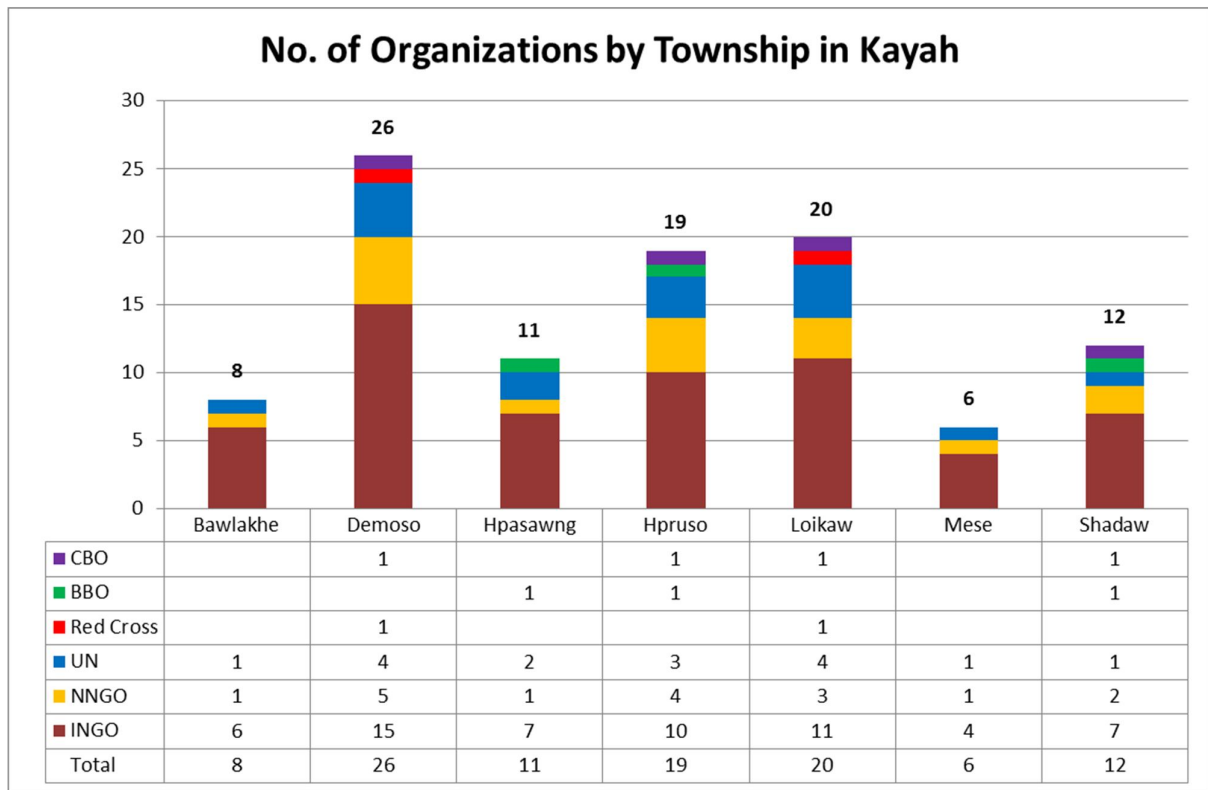


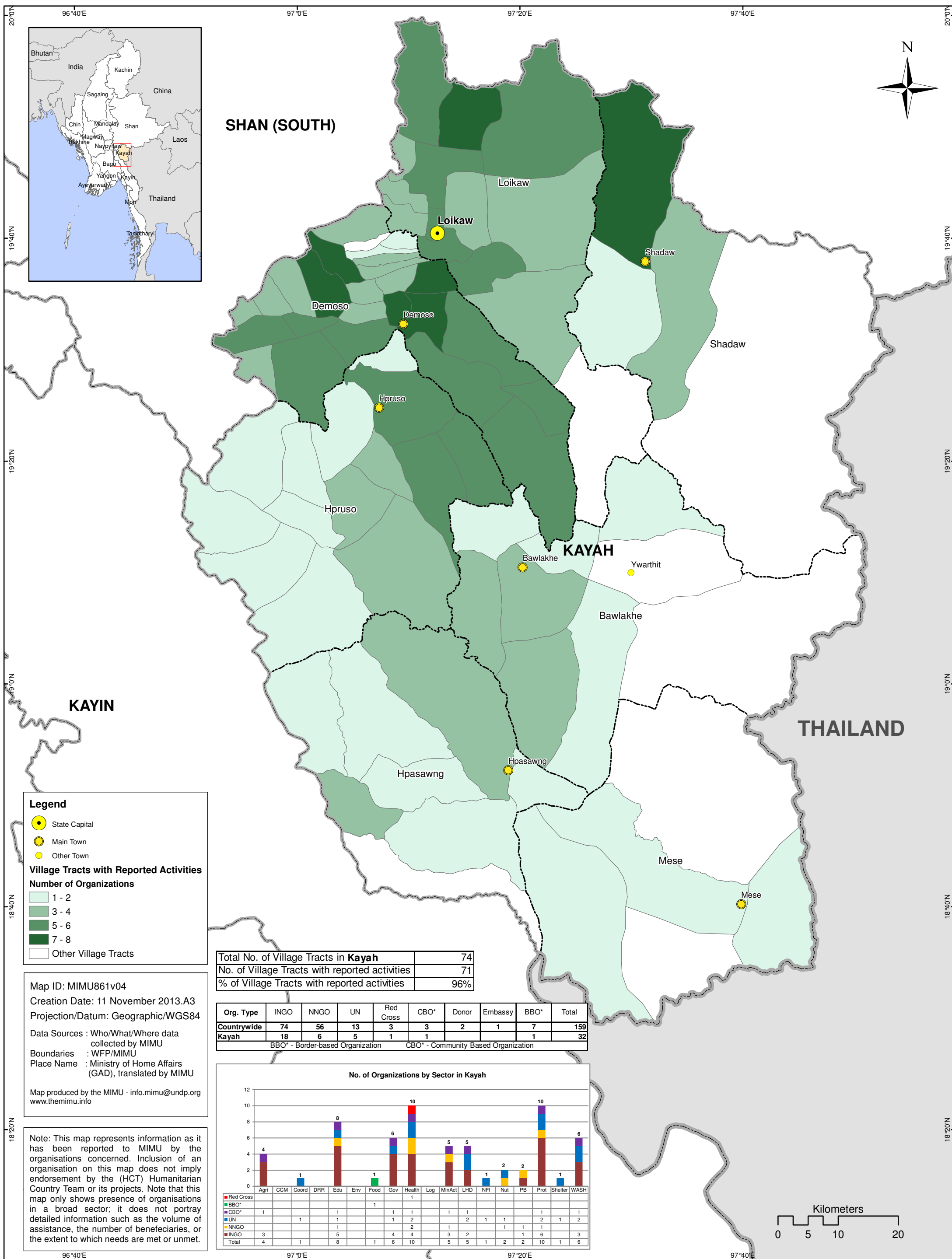
**Overview of the October 2013 3W
KAYAH**

No. of Organizations by Sector and type of Organization (as of October 23, 2013)							
Sector	INGO	NNGO	UN	CBO*	BBO*	Red Cross	Total
Agriculture	3			1			4
CCCM							
Coordination			1				1
Disaster Risk Reduction							
Education	5	1	1	1			8
Environment							
Food					1		1
Governance	4		1	1			6
Health	4	2	2	1		1	10
Logistics							
Mine Action	3	1		1			5
Non-Agricultural Livelihoods/ Infrastructure	2		2	1			5
Non-Food Items			1				1
Nutrition		1	1				2
Peace Building/ Conflict Prevention	1	1					2
Protection	6	1	2	1			10
Shelter			1				1
WASH	3		2	1			6

No. of Organizations by Sector and Township in Kayah (as of 23 October 2013)																			
Township	Agriculture	CCCM	Coordination	Disaster Risk Reduction	Education	Environment	Food	Governance	Health	Logistics	Mine Action	Non-agricultural livelihoods/ Infrastructure	Non-Food Items	Nutrition	Peace Building/ Conflict Prevention	Protection	Shelter	WASH	Tsp. Total
Bawlahe								2	4						1	2			8
Demoso	3				5			3	8		3	4	1	1	2	6	1	4	26
Hpasawng							1	1	3		2	1			1	2	1		11
Hpruso	2				4		1	3	4		2	3		1	2	4	1	2	19
Loikaw	2				6			4	6		3	5	1	1	2	6	1	2	20
Mese								1	1		1	1			1	1	1		6
Shadaw							1	1	2		2	1	1	1	1	4	1	2	12
Sector Total	4		1		8		1	6	10		5	5	1	2	2	10	1	6	

Overview of the October 2013 3W KAYAH





Myanmar - Who/What/Where - KAYAH - Organisation Presence at Township Level by Sector as of 23 October 2013 (Projects Under Implementation)

Township	Township pCode	Agriculture	CCCM	Coordi nation	Disaster Risk Reduction	Education	Environment	Food	Governance	Health	Logistics	Mine Action	Non-agricultural livelihoods/ Infrastructure	Non-Food Items	Nutrition	Peace Building /Conflict Prevention	Protection	Shelter	WASH	Count of Orgs.
Bawlakhe	MMR002005								MC, PACT	FFH, PACT, PSI, UNICEF						NPA	NRC, SCI			8
Demoso	MMR002002	ACF, CARE, SCI/FLD				AVSI, CARE, SCI/FLD, UNICEF, YF			AAM, MC, SCI/FLD	FFH, IRC, MRCS & IFRC, PSI, SCI/FLD, SDI, UNICEF, WV		DCA, SCI/FLD, MAG	CARITAS-Thai, SCI/FLD, UNDP, UNHCR	UNHCR	SDI	NPA, STH	CARE, NRC, SCI, SCI/FLD, Thingaha, CFM	UNHCR	ACF, CARE, SCI/FLD, UN-Habitat	26
Hpasawng	MMR002006							TBC (KnSWDC)	MC	PACT, PSI, UNICEF		DCA, MDCG	UNHCR			NPA	NRC, SCI	UNHCR		11
Hpruso	MMR002003	ACF, SCI/FLD				AVSI, SCI/FLD, UNICEF, YF		TBC (KnSWDC)	AAM, MC, SCI/FLD	FFH, PSI, SCI/FLD, UNICEF		DCA, SCI/FLD	SCI/FLD, UNDP, UNHCR		SDI	NPA, STH	NRC, SCI, SCI/FLD, CFM	UNHCR	ACF, SCI/FLD	19
Loikaw	MMR002001	CARITAS-Thai, SCI/FLD				AVSI, CARITAS-Thai, SCI/FLD, UNICEF, WV, YF			MC, NPA, SCI/FLD, UNDP	FFH, MRCS & IFRC, PSI, SCI/FLD, WHO, WV		DCA, SCI/FLD, WEI	CARITAS-Thai, SCI/FLD, UNDP, UNHCR, WV	UNHCR	UNICEF	NPA, STH	NRC, SCI/FLD, UNICEF, UNHCR, WV, Tdh-L	UNHCR	IRC, SCI/FLD	20
Mese	MMR002007								MC	FFH		DCA	UNHCR			NPA	NRC	UNHCR		6
Shadaw	MMR002004							TBC (KnSWDC)	MC	FFH, IRC		DCA, MAG	UNHCR	UNHCR	SDI	NPA	NRC, SCI/FLD, UNHCR, CFM	UNHCR	IRC, UNHCR	12
Not Specified				UNHCR		NRC			NPA							NPA	UNHCR			3

KAYAH - Summary of Organizations' Sub Sectors Interventions

Projects Under Implementation as of 23 October 2013

Sector	Sub Sector	No. of Projects	No. of Organizations	No. of Townships	No. of Village Tracts/ Towns	No. of Villages/ Wards
Agriculture	Agricultural Extension	1	1	2	9	33
	Agricultural Research	1	1	1	6	16
	Agriculture Water Resources	1	1	1	10	38
	Capacity Building (Agricultural Livelihood)	1	1	3	11	16
	Livestock and poultry	1	1	3	11	16
	Provision of paddy plantation & cultivation	1	1	2	10	17
Sector Total (AGRICULTURE)		5	4	3	30	103
Coordination	Information Management	1	1			
Sector Total (COORDINATION)		1	1			
Education	Early Childhood Development	5	4	3	23	65
	Food for Education	1	1	3	11	16
	Non-Formal Education	3	2	2		
	Quality Basic Education/Formal Education	5	5	3	4	11
Sector Total (EDUCATION)		13	8	3	29	90
Food	General Food Distribution	1	1	3	8	
Sector Total (FOOD)		1	1	3	8	
Governance	Economic and Development policy/planning	2	2	7		
	Human Rights Promotion and Advocacy	4	2	3	12	15
	Institutional Strengthening and Public Administration Reform	2	2	1		
	Media and flow of Information	1	1	1		
	Strengthening civil society	4	3	4	14	19
	Transparency/Accountability	1	1	1		
Sector Total (GOVERNANCE)		10	6	7	25	34
Health	Control of Communicable Diseases	1	1	1		
	Disease surveillance	1	1	1		
	Health Assessment	1	1	1	1	
	Health Education	4	3	4	26	45
	HIV/AIDS Programme	2	2	5	1	
	Malaria Programme	6	5	6	29	90
	Revitalization of existing HS - HR	1	1	1		
	Revitalization of existing HS- Equipment&Supplies	1	1	1		
	TB programme	3	2	1	9	36
	Women and Child Health	4	3	5	18	67
Sector Total (HEALTH)		23	10	7	49	150

KAYAH - Summary of Organizations' Sub Sectors Interventions

Projects Under Implementation as of 23 October 2013

Sector	Sub Sector	No. of Projects	No. of Organizations	No. of Townships	No. of Village Tracts/ Towns	No. of Villages/ Wards
Mine Action	Advocacy	1	1	1		
	Mine-Risk Education	4	4	6	15	38
	Victim Assistance	1	1	1	1	1
Sector Total (MINE ACTION)		6	5	6	16	39
Non- Agricultural Livelihoods/ Infrastructure	Cash for work	1	1	2	22	40
	Income Generation	3	3	3	35	79
	Micro-Finance	2	2	6	11	16
	Social Recovery	4	3	3	35	69
	Vocational Training	1	1	2	22	40
Sector Total (NON-AGRICULTURAL LIVELIHOODS/INFRASTRUCTURE)		6	5	6	39	92
Non-Food Items	NFI Distribution	3	1	3	2	3
Sector Total (Non-Food Items)		3	1	3	2	3
Nutrition	Inpatient Therapeutic Programme (ITP)	1	1	1		
	Outpatient Therapeutic Programme (OTP)	1	1	3		
Sector Total (NUTRITION)		2	2	4		
Peace Building/ Conflict Prevention	Conflict transformation and Peacebuilding	3	2	7	13	14
Sector Total (PEACE BUILDING/CONFLICT PREVENTION)		3	2	7	13	14
Protection	Awareness Raising on Protection Issues	1	1	1		
	Child Protection	5	4	6	23	51
	Civil Documentation	1	1	7	64	121
	Community Based Protection (Groups)	1	1			
	Family Tracing	1	1	1		
	Housing, Land and Property (IDP, returnee)	1	1	7	45	74
	Human Trafficking	1	1	1	3	4
	Promoting Gender Equality and Empowerment of Women	1	1	3	11	16
	Protection Assessment	1	1	2		
	Sexual and Gender Based Violence	2	2	1	10	39
	Vulnerable Populations in Emergencies	1	1	1	1	1
Sector Total (PROTECTION)		13	10	7	69	187
Shelter	Shelter Assessment	1	1	6		
Sector Total (SHELTER)		1	1	6		
WASH	Construction & Rehabilitation -Sanitation Facility	4	4	4	27	90
	Construction & Rehabilitation -Water Facility	5	5	4	34	111
	Hygiene Promotion	1	1	3	11	16
Sector Total (WASH)		6	6	4	36	136
Grand Total (All Sectors)		81 (12%)	32 (20%)	7 (100%)	71 (96%)	345 (67%)