



# **The Chin State Floods & Landslides: A Community-Led Response and Assessment**

**Chin Committee for Emergency Response and Rehabilitation (CCERR)**

**3<sup>rd</sup> December 2015**

## Background

Heavy rains have caused floods and landslides in several parts of Myanmar since June 2015. On 30 July, Cyclone Komen made landfall in Bangladesh, bringing strong winds and additional heavy rains to the country, which resulted in widespread flooding across 12 of the country's 14 states and regions (Ayeyarwady, Bago, Chin, Kachin, Kayin, Magwe, Mandalay, Mon, Rakhine, Sagaing, Shan Yangon). On 31 July 2015, the President declared Chin and Rakhine States, and Magwe and Sagaing Regions as natural disaster zones,<sup>1</sup> in accordance with Article 11 of the Natural Disaster Management Law.

As of 4 October, the National Disaster Management Committee (NDMC) of the Government of Myanmar (GoM) reported that 1,676,086 people have been temporarily displaced by floods and landslides in July and August. The majority of these people have since been able to return to their homes as flood waters have receded in most areas. A total of 132 people died: 125 during July and August, and 7 in June. Affected areas have suffered MMK 231.3 billion (US\$ 192.8 million) in direct economic losses, with the most severe impact in Rakhine State and Ayeyawaddy Region. Additionally, 487,550 houses were damaged by flooding and 38,951 houses were destroyed. A total of 1,146,275 acres of farmland were damaged, of which 872,667 acres were destroyed; 494,892 acres have since been re-cultivated.<sup>2</sup>

Chin State has witnessed state-wide destruction in the wake of Cyclone Komen. As of early September, the government reported that 20,449 people were affected here. Data from CCERR updated as of 14<sup>th</sup> November 2015 estimated that number to be as high as **54, 537 people**.

The multi-donor Post-Disaster Floods and Landslides Needs Assessment (PFLNA) said that **“unprecedented extreme rainfalls caused landslides in the Chin State**. Within the last seven days of July, over 30 percent more rain fell than in any other month over the past 25 years. The monthly rainfall of July measured at the weather station in Hakha would be equal to a 1-in-1,000-year rainfall. This explains the widespread and devastating landslides within Chin State and in particular the reactivation of a large, old, and deep-seated landslide on which—as a detailed geologic and geo-engineering study revealed (Win Myint, Kyaw Htun et al. 2015) —parts of Hakha had been built. Many affected areas are remote and were difficult to access, particularly in Chin State. Due to the massive damage and persisting landslide risks, geologists and engineers were assessing the feasibility of relocating the capital, Hakha, to a safer location.” The breakdown of basic infrastructure such as roads and bridges under the pressure of flooding and landslides has severed communications and supply lines in and out of many townships placing serious restriction on the delivery of humanitarian assistance<sup>3</sup>. Countless communities are yet to be reached months after the cyclone.

Even before the disaster, Chin State was by far the poorest region of the country, with 73% of the population living below the poverty line and 25% living in extreme poverty, according to UN statistics.<sup>4</sup> The impacts of Cyclone Komen are placing grave pressure on the Union's most vulnerable communities. Local agriculture production is currently only sufficient to feed 70 per cent of the population of the state<sup>5</sup>. The decimation of primary livelihoods in upland farm cultivation has placed already vulnerable populations at great risk, while extreme weather conditions and environmental degradation represent real threats to sustainable recovery.

The government has made efforts to respond to the floods across the country.<sup>6</sup> The ‘Myanmar Post Floods and Landslide Needs Assessment’ (PFLNA) was launched in Naypyitaw on 24<sup>th</sup> September. It

---

<sup>1</sup> Multi-sector Initial Rapid Assessment (MIRA), as of 3<sup>rd</sup> Sept 2015

<sup>2</sup> NNDMC/GoM Situation Report 6, 6<sup>th</sup> October 2015

<sup>3</sup> Chin State Government Data (collated by i-Chin as of 20<sup>th</sup> August 2015)

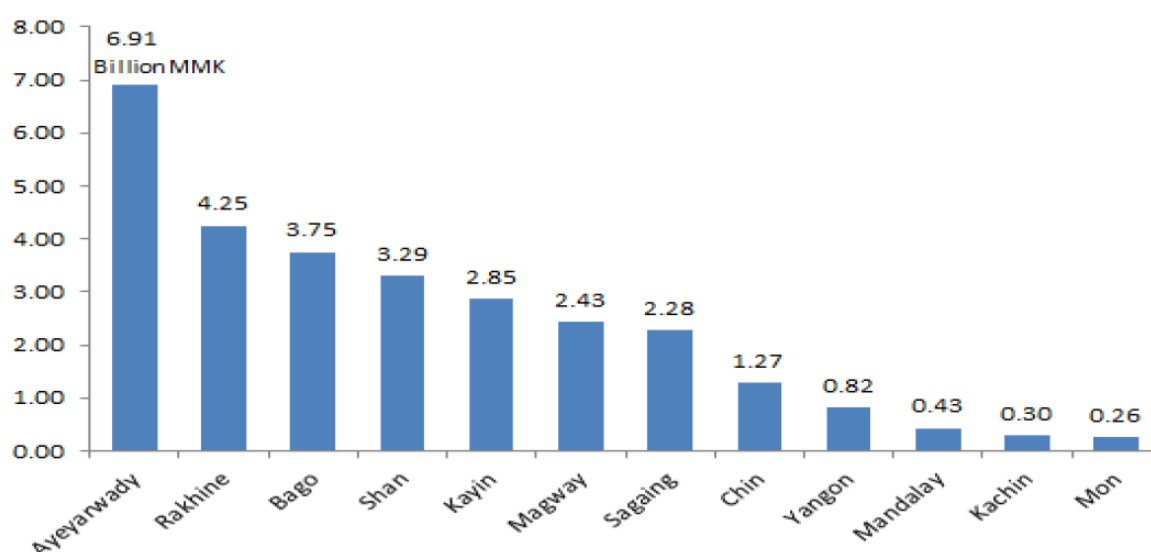
<sup>4</sup> Integrated Household Living Conditions Survey in Myanmar (2009-2010), June 2011

<sup>5</sup> Support to Chin State's Comprehensive 5-year Development Plan and Annual Planning 2016-2021, MIID, October 2014

<sup>6</sup> NNDMC/GoM Situation Report 6, 6<sup>th</sup> October 2015

was coordinated by the Ministry of Social Welfare, Relief and Resettlement and the Ministry of Construction, in collaboration with the World Bank, UN Agencies, the European Union (EU) and the Japan International Cooperative Agency (JICA). According to the government, a combined contribution of over MMK 187 billion (\$156 million) has been committed to the flood response. Of this, MMK42.2 billion is from the President's Reserve Fund, MMK 6.5 billion is from the National Government, and MMK 22.3 billion is from State/ Region Government or 38% of the total. The remaining 62% came from foreign governments, private sector and civil society.

As of 4 October, MMK 28.8 billion (\$24 million) has been spent for flood response activities by the Government. The table below shows Government expenditure by State/Region. **MMK 1.27 billion (or 4%) has been spent in Chin State.**<sup>7</sup>



Source: Ministry of Social Welfare, Relief and Resettlement (MoSWRR), Ministry of Education (MoE), Ministry of Border Affairs (MoBA), State and Regional Governments, as of 4 October 2015

On the ground, emergency relief and small-scale short-term recovery efforts have been carried out mostly by local Chin civil society groups, and some international agencies or their partner agencies. The Chin State Government (CSG) formed a 10-member committee to strengthen coordination to the flood response between the CSG and inter-agency partners. But this response is far from sufficient. Long-term strategic reconstruction and rehabilitation is desperately needed in order to build a more secure and sustainable future. This requires the resources and expertise of the highest levels of government in cooperation with development partners and Chin civil society.

## Need for Coordinated Multi-stakeholder Response

Delivery of aid to Chin State, and neighbouring Chin communities based in Rakhine State and Sagaing Region, has been difficult for two types of reasons: the terrain and the management of aid delivery. Given Chin State's isolation and the thin presence of development agencies on the ground, the emergency response has mostly been led by relief committees formed at village and township levels across the State.

Participants at the CCERR recovery planning workshop on 21st to 23rd October identified a number of problems with the response to date:

<sup>7</sup> ibid

1. Initial response has tended to be led by local Chin CSOs. When international agencies finally come in, they deliver aid without sufficient understanding of local context and actors – resulting in delivery of inappropriate aid
2. Earlier assessments of needs were only able to access small number of villages across the State. This has led to underestimates and inadequate responses.
3. Aid has not been shared fairly and transparently. There are difficulties in provision of aid to Chin communities when they are minorities in an area, such as in Rakhine State. Salai Isaac Khen of Gender and Development Institute (GDI), after his visit to Sittwe, Ponnagyun, Kyauktaw, and Paletwa in southern Chin State (which is only accessible via Rakhine State) observed that aid has largely been withheld by Rakhine community leaders from Mro and Khami communities living in Kyauktaw and Ponnagyun<sup>8</sup>.
4. Insufficient coordination between Gov't – NGOs – INGOs. Some of the same geographic areas are being prioritized by multiple agencies creating overlap, while some high need areas are not reached
5. Local aid committees have limited experience in responding to emergencies. They might not be able to make decisions with broad consultation, perhaps due to poor transportation and communications. They may have challenges when balancing between coordination and direct implementation responsibilities. If they do too much of the latter, they might not be able to ensure aid effectiveness broadly.
6. Information and access to isolated areas is limited. For example, upper Paletwa near Lemro and Kaladan Rivers, and the border towns to India in Tonzang, continues to be a major issue in the emergency phase

CCERR network members call for stronger coordination between civil society, international agencies and government from local to national and even international levels. This coordinated multi-stakeholder structure would help to ensure that:

- a. the response is adequate to the needs of Chin State, and designed with local communities
- b. aid is delivered to hard-to-reach locations, and reduces overlaps in other places
- c. aid is delivered with fairness, transparency and accountability
- d. the aid is managed more effectively i.e. by local response committees and humanitarian partners, and delivered more efficiently i.e. logistics, storage, data tracking, etc
- e. aid is delivered through a structure that separates quality assurance from direct implementation; in the CCERR structure, township aid committees i.e. Paletwa Relief and Rescue Committee should ideally oversee quality while local CBO i.e. MEET, deliver aid.
- f. a transparent and participatory governance of aid delivery can reduce the potential for conflict between communities when receiving aid
- g. the response is sensitive to groups that are more vulnerable i.e. single women-headed households, children, elderly, handicapped, etc

To facilitate the creation of this multi-stakeholder structure, the Chin Committee for Emergency Response and Rehabilitation (CCERR) was initiated by Chin political parties and civil society leaders based in Yangon in early August. CCERR consists of Chin political parties, religious organizations, Chin civil society and other local actors. The aim of CCERR is to consolidate and coordinate relief efforts in order to address short-, mid- and long-term challenges for a comprehensive and sustainable recovery. It is envisioned that this governance structure could also support future development and peace-building efforts in Chin State.

---

<sup>8</sup> Email update to CCERR from Salai Isaac Khen dated 11<sup>th</sup> September 2015

## Principles of CCERR

First and foremost, the CCERR seeks to **bring the voices of local people to the higher level on-going debates** about the nature and level of aid being decided by government, donors and NGOs responding to the flood recovery. The needs and the recommended responses are based on CCERR's consultations with local populations through its extensive social network down to nearly all villages in the state.

**CCERR bases its analysis of needs strictly on humanitarian grounds.** The needs are backed up by extensive local data down to the village level, which is regularly updated and analysed by CCERR secretariat. After the first CCERR meeting on 14-15 August in Yangon, damage assessments were carried out around Chin State by local relief groups. Because infrastructure, particularly roads and bridges, have largely been damaged in several townships, it has been much more difficult to conduct assessments of the situation (and to send through needed supplies). The data collected has been triangulated with government data such as the PFLNA, the MIRA and other assessments conducted by UN and NGOs to create this plan. This is necessary because many official assessments, due to access, are only able to take a small sample of villages; for example, the MIRA only covered 85 villages in Chin State—leading to an underestimation of the needs.

This focus on Chin areas does **not mean that CCERR promotes aid only for Chin communities at the expense of other ethnic groups.** CCERR tracks the needs of all affected groups in Chin State, such as the 40% Rakhine people living in Paletwa Township, or the small pockets of Burman people living in the state.

Though the greater focus is on Chin State, the inclusion of Chin minority enclaves in Rakhine, Magwe and Sagaing<sup>9</sup> are based on the fact that **they have less political capital to facilitate their access to aid.** For example, there are no Chin village tract leaders in Chin areas of Rakhine State. Other minority groups such as the M'ro and Khami<sup>10</sup> also face similar challenges in this state (but detailed information on these populations has been difficult for the CCERR to access). Given these enclave areas difficulty in accessing administrative decision-making in order to communicate their need for aid, Chin representatives from these areas are included into the CCERR network to strengthen their capacity to respond to local populations in these areas

## Activities to Date

Immediately after the flooding and landslides occurred, the CCERR sent a letter on 1<sup>st</sup> August 2015 to the president requesting urgent support, and air lift of relief items due to transport infrastructure destruction. This was followed by a press conference in Yangon on 3<sup>rd</sup> August targeting media, embassies and some development actors. In Yangon, the CCERR met on 14<sup>th</sup> and 15<sup>th</sup> August in Yangon to take stock of the extent of damage caused by the flooding earlier this month. The meeting was attended by 120 Chin people representing religious institutions, local Chin relief groups working on the ground, and a few representatives from INGOs.

Using data gathered through its local response committees, CCERR representatives were able to advocate on needs at the national levels. CCERR fed into a national level recovery planning meeting

---

<sup>9</sup> These three regions include enclaves in Townships in Northern Rakhine, namely Buthidaung, Kyauktaw, Mrauk U and Minbya; in Magway this includes Gangaw, Tilin, Saw and Sidoktaya Township; and in Sagaing this includes Kalay Township. The historic homeland of the Chin extends beyond the borders of modern day Chin State (Lian H. Sakhong, (2003), *In Search of Chin Identity: A Study in Religion, Politics and Ethnic Identity in Burma*.

<sup>10</sup> Although these groups are claimed by the Chin community as Chin sub-groups, the Government of Myanmar does not classify them as Chin.

on the 13<sup>th</sup> October 2015 led by the Ministry of Social Welfare and Ministry of Construction. Two representatives from CCERR participated. At this meeting, Chin State's needs were highlighted by the RCC led by UNDP. Chin State was also highlighted by the Secretary General Ban Ki Moon.

In addition, on 8<sup>th</sup> October, CCERR presented this data to UN Agencies and INGOs working on the flood response. There was great interest in the situation in Chin State, leading to a greater pledge of support. For example, the Asian Development Bank has asked CCERR to provide ideas for their Chin State Livelihoods Restoration Plan to be developed in next 3 months.

Most recently, CCERR held a three-day recovery planning workshop in Yangon for over 100 Chin representatives, half of them based in the field. The outputs from that workshop have been incorporated into this document.

This plan is meant to be used for: a) coordination of Chin people in responding to the flood for the relief and recovery stages; b) informing the allocation of funding from government and other donors to needy areas; c) monitoring gaps and quality of recovery activities carried out in Chin State for at least the next 1 year. Over at least the next year, CCERR field teams will continue to collect data at the village level, which the CCERR secretariat is receiving and analysing.

The CCERR continues to liaise with the central government on Chin State's relief and recovery needs.

## **CCERR Functions**

The CCERR has the following four main functions.

### Coordination

- Coordination within Chin: Coordination among different Chin actors- committees in affected areas, Chin Religious Organizations, Chin CSOs, Political parties, Chin National Front etc
- Data collection, dissemination, communication
- Coordination with government (State level and Union level). Linkages between Chin actors and government at multiple layers
- Coordination with development actors
- Coordination at township and local level

### Advocacy

- Advocacy to government on the short-term and long-term needs for Chin communities
- Advocacy to development actors on the short-term and long-term needs for Chin communities
- Awareness raising to Chin communities in country and abroad. Advocacy for more effective support to meet the short-term and long-term needs for Chin communities
- Engagement with media

### Formulation of Joint Strategy and Action Plan

- Develop CCERR strategy for early recovery and recovery with build back better principles
- Consult with government and development actors. Coordinate with them and jointly develop a strategy and action for recovery with concrete milestones
- Develop multi-stakeholder coordination/cooperation mechanism (government, development actors and civil society)

### Strengthening Civil Society, Monitoring and Learning

- Monitoring and local level interventions

- Monitoring at Chin state level and also in Sagaing, Magwe and Rakhine Chin communities
- Empower local committees/CSOs to watch and demand transparency and accountability for disaster response interventions by government, development actors and CSOs. This will lead to improve local governance- empowering local voices beyond disaster response in future.
- Enabling local actors to be familiar with best practices and to be able to engage more effectively

## **CCERR Structure**

### **Members**

1. Committees/Groups in affected areas
2. Township/Tribal based Associations/Committees in Yangon, and other part of Myanmar
3. Chin CSOs) E.g Chin Youth Network, Chin Women's Organizations Network, Chin Culture and Literature Committees (Universities)
4. Religious Organizations

### **Advisory Group**

Leaders from Chin Political Parties and other respected elders will be in advisory group to provide advice and guidance for CCERR.

### **Main Committee (50 persons)**

The main committee will be formed as per representation of stakeholders below.

#### **Religious Organizations/Institutions:**

- 1) Anglican Church- Sittwe Diocese (Paletwa)
- 2) Catholic Church- Hakha Diocese (Hakha)
- 3) Chin Baptist Convention (Falam)
- 4) Tedim Baptist Convention (Tedim)
- 5) Rakhine Baptist Convention (Kyauk Phyu)
- 6) Chin Buddhist Association (CBA)
- 7) Asho Baptist Churches Union (Pyay)
- 8) Global Chin Christian Fellowship (GCCF)
- 9) Norway Chin Christian Federation (NCCF)
- 10) Zomi Baptist Convention of Myanmar (ZBCM)

#### **Committees/Groups in affected areas:**

- 1) Thantlang Relief Committee
- 2) Paletwa Rescue and Rehabilitation Committee (PRRC)
- 3) Chin Relief Committee for Falam
- 4) Hakha Rescue Committee
- 5) Sumtu Relief Committee (Rakhine)
- 6) Zotung Relief Committee (N-Matupi)
- 7) Matupi Rescue Committee (MRC)
- 8) Chin Disaster Association (Mindat)
- 9) Chin Emergency Association (Mindat)
- 10) Kanpetlet Women's Network (KWN)
- 11) Kanpetlet Flood Relief Group (KFRG)
- 12) Chin Relief Committee Kalay (Sagaing)
- 13) Asho Relief Committee (Magwe)

### **Township Committees in Yangon, and other part of Myanmar:**

- 1) Matupi Township Association
- 2) Paletwa Township Association
- 3) Hakha Township Association
- 4) Tonzang Township Association
- 5) Tedim Township Association
- 6) Falam Township Association
- 7) Thantlang Township Association
- 8) Mindat Township Association
- 9) Kanpetlet Township Association

### **Chin CSOs/Media:**

- 1) Chin Media Network (Hakha)
- 2) Chin Natural Resource Watch Group (Kalay, Sagaing)
- 3) Tedim Youth Fellowship
- 4) Kha-Ca-Ya AKA Chin Literature and Culture Committee (Yangon)
- 5) Chin Women Organisations Network
- 6) Chin Youth Network/Organisation
- 7) M'ro Youth Action Group (Yangon)
- 8) Chin Green Network

### **Executive Committee**

The main committee will form executive committee to make management decisions. Working closely with the secretariat and technical support group, the main committee will assign members to form a Focal Team to support CCERR to carry out its functions.

### **Executive Committee members:**

- 1) Salai Cung Lian Thawng
- 2) Salai Isaac Khen
- 3) Salai Bawi Liang Mang
- 4) Saya Cin Khan Lian
- 5) Mai Sung Tin Par
- 6) Salai Aung Myint
- 7) Salai Joseph Kung Za Hmung
- 8) Salai Van Biak
- 9) Sayama Flora Bawi Nei Mawi
- 10) Sayama Hlawn Tin Cuai

### **Secretariat Office**

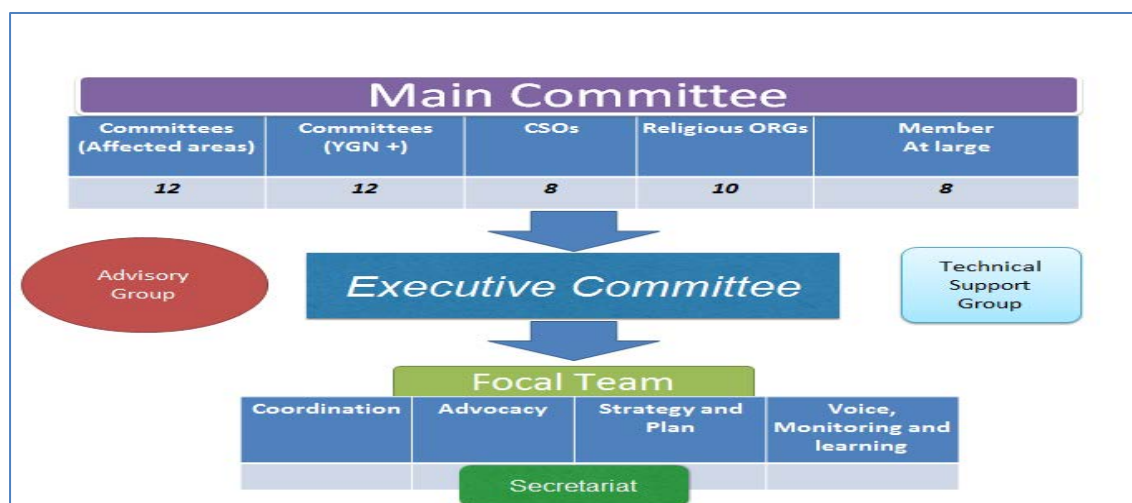
A small secretariat office with 2 full time staff for coordination will be set up and it will be embedded into one lead agency or a separate office. The secretariat office will coordinate executive and main committees, as well as other Chin committees and actors and implement CCERR decisions with focal group. It will also lead /facilitate coordination of CCERR with government and development partners/actors.

### **Technical Support Group**

A technical support group will be formed with experts who have technical capacity to contribute to CCERR purpose. It can be Chin experts as well as non-Chin experts (national or international)



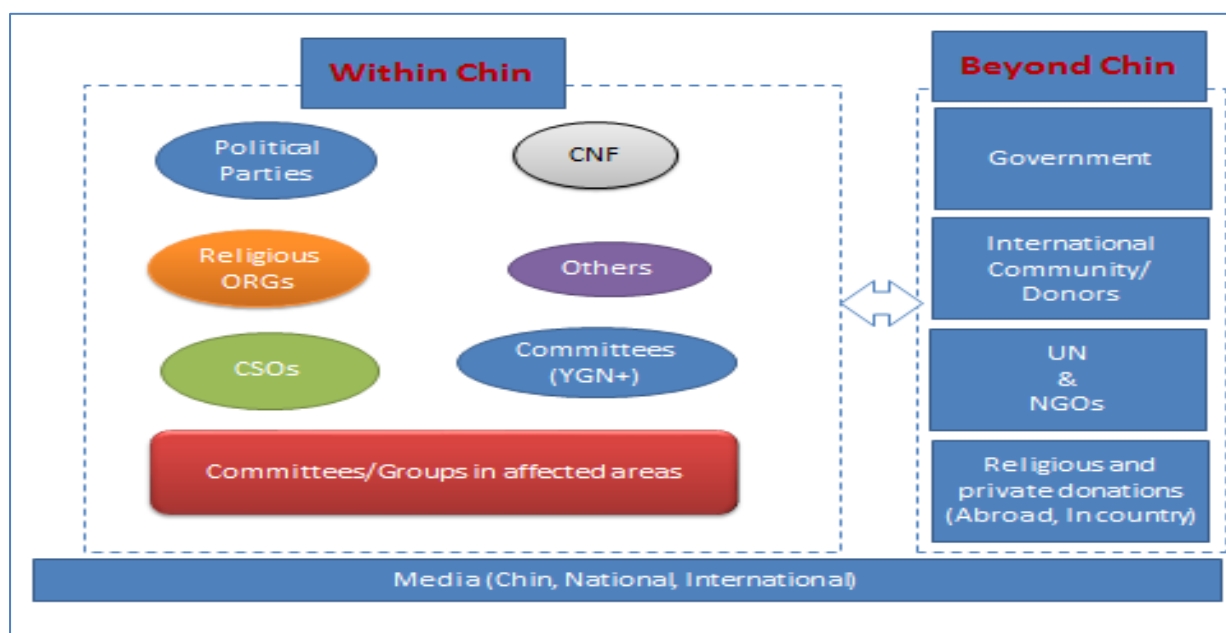
**Figure 1 CCERR Structure**



### Other key stakeholders

1. Government (State level and Union level)
2. Chin political Parties. They have involved in disaster response from the very beginning and participated in 1<sup>st</sup> Aug 2015 meeting, forming CCERR.
3. Chin National Front (CNF). It has involved in disaster response with CCERR from the beginning and jointly organized Press Conference (Aug 3) and Workshop (Aug 14-15) with CCERR. It will work closely with CCERR in relief and recovery efforts but will not be a member in CCERR.
4. Development actors – Donors, UN agencies, INGOs, LNGOs
5. Religious Organizations (beyond Chin) e.g Myanmar Council of Churches and foundations e.g Wai Lu Kyaw Foundation, KBZ etc

**Figure 2: Coordination within Chin and beyond Chin for disaster response and rehabilitation**



## Needs, Response to Date, Next Steps

The first national assessment-- the Multi-sectoral Initial Rapid Assessments (MIRA)—were conducted in 280 locations of 34 townships in Ayeyarwady, Bago, Chin, Magwe, Rakhine and Sagaing, covering close to 200,000 people (12.3 per cent of the affected people)<sup>11</sup>. In Chin State, the MIRA covered 85 villages which are only about 10% of all villages in Chin State. On 24<sup>th</sup> September, the PFLNA was launched in Nay Pyi Taw by the GoM in collaboration with the World Bank, UN agencies, the European Union and the Japan International Cooperation Agency.

Assessments have also been carried out by various ministries, the Chin State government and different sectoral cluster groups led by UN agencies.

All these official data sources are presented here against CCERR data organized by sector: Shelter; Food Security/ Livelihoods; Infrastructure (buildings, roads, bridges, etc.); Water Sanitation (WASH); Health; and Protection.

Under each sector, the analysis is organized according to: **a) needs; b) response to date** (where known); and **c) proposed next steps** largely drawing from the outputs of the recent CCERR recovery planning workshop from 21-23 October 2015.

## Population Affected

Total population in Chin State	478,690	Census		
Total people affected in Chin State	20,449	GoM 3/09/15	<b>54,537</b>	CCERR 20/10/15
Total displaced people in Chin State	10,525	MIRA 3/09/15	<b>19,921</b>	CCERR 20/10/15

As of early September, the government reported that 20,449 people were affected in Chin State. It is believed that “affected” indicates the number of people forcibly displaced due to the destruction of residence. Data from CCERR as of 20<sup>th</sup> October 2015 estimated that number to be as high as **54,537 people**. CCERR uses a broader lens with which to indicate “affected”, including damaged and destroyed households and those communities forced to relocate due to severe damage and destruction of surrounding farmland and transportation infrastructure. According to the preliminary Census results, this means that over 12% of the population of Chin State has been directly affected by the floods and landslides.

Multi-sector Initial Rapid Assessment (MIRA) showed that 10,525 were initially displaced, while CCERR data indicates that **19,921** are currently displaced across six townships. This data comes from a mix of CCERR township level data collection committees, and WFP’s data from partners. WFP definition of displaced is that people live in camps, temporary shelters, staying in other people’s houses, or staying in their own houses. The Chin State Government is updating its list of IDPs on a daily basis, and it is being used as the official registration list for IDPs. Of this, as of 11 November 2015, OCHA estimates that 5,265 persons have been still living in 19 temporary relocation sites across three townships.<sup>12</sup>

<sup>11</sup> Multi-sector Initial Rapid Assessment (MIRA), as of 3<sup>rd</sup> Sept 2015

<sup>12</sup> WASH Cluster Chin State Report, 19<sup>th</sup> Nov 2015

### Breakdown of affected and displaced populations

	Affected Households		Affected Population		Displaced	
Township	Town	Village	Family	Pop <sup>13</sup> .	Households	Population
Falam	35	1,503	1,538	7,690	252 <sup>14</sup>	
Hakha	984	323	1,307	6,535	884 <sup>15</sup>	4,254
Kanpetlet	46	552	598	2,990		
Matupi	116	892	1,008	5,040	36 <sup>16</sup>	180
Mindat		111	111	555	437 <sup>17</sup>	2,396
Paletwa	477	2,858	3,335	17,943	907 <sup>18</sup>	4,535
Tedim		442	442	2,210	361 <sup>19</sup>	2,466
Thantlang		1,191	1,191	6,548		
Tonzang		853	853	5,026	647 <sup>20</sup>	3,879
<b>Chin Tsp. Totals</b>	<b>1,658</b>	<b>8,725</b>	<b>10,383</b>	<b>54,537</b>	<b>3,524</b>	<b>19,921</b>
Rakhine		376	127	3,233		
Magwe		258	1,139	2,536		
Sagaing		388	3,434	19,003		5,689
<b>Grand Total</b>	<b>1,658</b>	<b>9,747</b>	<b>15,083</b>	<b>79,309</b>	<b>3,524</b>	<b>25,610</b>

Source: CCERR 20th November, 2015

## Shelter

### The Needs

Destroyed & damaged houses	<b>5,116</b>	CCERR, 20/10/15
Destroyed houses	2,925	MoWSRR 25/9/15
Damaged houses	1,000	Shelter Cluster estimate 25/9/15

<sup>13</sup> In this column of affected population, Paletwa and Tonzang are actual figures from township data collection teams; the other townships are estimates by multiplying affected households by 5 people.

<sup>14</sup> WFP Data relying on local partners; According to Chin Relief Committee-Falam, in addition to these displaced households, 23 out of 180 Villages out of 180 are being forced to relocate due to severe damage to farmland and access roads in area surrounding villages

<sup>15</sup> Hakha Rescue Committee

<sup>16</sup> Matupi township data collection team

<sup>17</sup> WFP Data relying on local partners

<sup>18</sup> Paletwa township data collection team

<sup>19</sup> Tedim township data collection team

<sup>20</sup> WFP Data relying on local partners

	House Destroyed or Damaged		Total
Township	Town	Village	
Falam	35	123	158
Hakha	984	323	1,307
Kanpetlet		290	290
Matupi	116	892	1,008
Mindat		111	111
Paletwa	287	842	1,129
Tedim		442	442
Thantlang		6	6
Tonzang		853	853
<b>Chin Tsp. Totals</b>	<b>1,234</b>	<b>3,882</b>	<b>5,116</b>
Rakhine		376	376
Magwe		258	258
Sagaing		388	388
<b>Grand Total</b>	<b>1,422</b>	<b>4,904</b>	<b>6,326</b>

Source: CCERR 20th November, 2015

Government data shows that 3,925 shelters were destroyed compared to CCERR's figure of 5116. Although Chin State does not have the largest number of houses destroyed, **it ranks second most serious as having the greatest number of houses totally destroyed.**<sup>21</sup> The most severe destruction and damage to houses has been in **Paletwa with 1,129 houses** and **Hakha with 1,307 houses**, per the above table..

A number of villages have already been evacuated, while many other villages are structurally insecure with livelihoods severely destabilised as roads, bridges and farmlands have yet to be rehabilitated following landslides and flooding. For example, the Chin Relief Committee-Falam reported that out of 180 villages in the township, 23 villages are being forced to relocate due to severe damage to farmland and access roads. Assessments carried out by the government estimate that **3,000 households** will need to be relocated to safer locations.

The Shelter Cluster<sup>22</sup> said recovery will take longer in Chin State because, "Mountainous area severely affected by landslide and access. Many households whose houses were destroyed or are now in unsafe locations are obliged to find temporary accommodation until new locations are identified and support for rebuilding is available. Because houses were damaged by ground instability

<sup>21</sup> Shelter Cluster SitRep as of 31<sup>st</sup> August 2015

<sup>22</sup> Shelter Cluster Sitrep dated 15<sup>th</sup> September 2015

almost all affected houses will need to be rebuilt elsewhere.” In landslide areas, they are awaiting the results of the government geological survey before there can be land allocation and rebuilding of new houses. This may take more than 6 months.

In the capital of Hakha alone, 884 families were still living in seven camps as of 19<sup>th</sup> October 2015 (Hakha Rescue Committee).<sup>23</sup> Most of the camps across Chin State are **below international humanitarian standards**, with many camp residents and relief committees holding serious concerns over the lack of winterization of camp shelters alongside the absence of proper drainage systems which, if developed, could markedly improve living conditions during the winter season.

There is **minimal reported shelter response for the population of Paletwa** where 1,129 houses<sup>24</sup> (CCERR data) are reported destroyed by landslides and flooding. While a small number of houses were repaired at the average cost of 16,816,000 Kyat, the remaining 907 households have not been repaired for reasons relating to severe damage to the house, damage to village infrastructure, or limited available resources for reconstruction. There are **no known camps in Paletwa to date**, as villagers are staying with their friends and family.

Paletwa Township is considered to be the most poverty prone township of Chin State. In travelling to Paletwa from Sittwe, it's necessary to travel by road to Kyauktaw (4 hours) and then take a boat up the Kaladan River from Kyauktaw to Paletwa (5 hours). As a result, local people are forced to cut trees and bamboo to rebuild by themselves. This puts more pressure on forest resources with deforestation in the Township at 50% already, and expected to rise to 80%. This depletion of forest resources has been exacerbated by illegal logging.

The response by the **government tends to recognize registered houses and land** (Paletwa & Rakhine) and **prioritizes those whose houses that are completely and not partially destroyed** (Tedin and Tonzang).<sup>25</sup> This means that those families whose land and homes remain unregistered may be unaccounted during government interventions, while those families whose houses have been recorded as partially destroyed may be overlooked during the distribution of aid and resources

### The Response to Date

# of shelter kits	# of HHs received cash grants	Permanent houses planned	Houses being constructed
4,650	46	732	380 in phase 1

Source: National Situation Report, Shelter Cluster, 9<sup>th</sup> November 2015<sup>26</sup>

This government supported housing reconstruction has only been started in Hakha.

### Housing Reconstruction

Per the Ministry of Construction, a total of 732 houses will be rebuilt in the new relocation site. Two private companies are constructing 380 houses (Phase 1) with unit area of 608 sq. feet under the supervision of the Relocation Committee and the Forest Department. The construction cost for a two bedroom timber house is about 4.4 million kyats and all costs are subsidized by the Union Government. The Chin State Government through cooperation with different Ministries is also planning basic infrastructure provisions such as roads, electricity and water supply. Other infrastructure needs including schools, clinics, markets, playgrounds and community areas are incorporated into the new town development plans. 352 relocation plots will be implemented (Phase 2) on the east side of Hakha-Falam road.

<sup>23</sup> Hakha Rescue Committee, 19<sup>th</sup> October 2015

<sup>24</sup> Per CCERR data, 20 October 2015

<sup>25</sup> CCERR Workshop discussions on 21-23 October 2015

<sup>26</sup> National Situation Report, Shelter Cluster, 9<sup>th</sup> November 2015

### *Camp Management Sub-standard*

The OCHA Coordinator in Hakha reported<sup>27</sup> that the camp management is constructing temporary shelters made of zinc roof, wood available in the region, tarpaulin and raised floor. They expressed the lack of technical aspects in building them. There are a number of concerns identified by the Shelter Coordinator in his visit to Kalay, Falam, Hakha in the second week of September:

- Tents tend to leak under heavy downpours.
- Camps including long houses do not meet minimum humanitarian standards.
- People in public buildings still need an appropriate solution.
- People in damaged houses are in need of a shelter solution.
- Host family's situations, which are not sustainable, should be addressed.

This was confirmed by Salai Isaac Khen's visit to Hakha from 8-11 September, he assessed that the temporary shelters constructed to date have been of low quality and discussed with the HRC that they be rebuilt with the Shelter Cluster's assistance. The Shelter Cluster is planning to put a technical advisor in Hakha to secure temporary shelters for the winter.<sup>28</sup>

Tedim has a similar situation. People are sleeping on uncovered ground or makeshift bedding from forest materials covered in tarpaulin. Many people are also staying in churches and beneath the local schools. Because of poor quality materials and overcrowding, people are very concerned with the approach of winter when the rain and wind will expose them to the elements. Government relocation programme only provides for families whose houses have been totally destroyed, but many shelters are partially destroyed and also need assistance.

### *Cash for Shelter*

The Shelter Cluster, in coordination with the Cash Working Group<sup>29</sup> proposed to give out cash to households to rebuild shelters, to purchase food, and to restart immediate livelihoods. Cluster leads have suggested values and definitions (in MMK) as per the matrix below. In practice only a few agencies have started to give cash grants for shelter including ADRA (100,000 to 200,000 MMK) and IFRC/MRCS (500,000 MMK).<sup>30</sup>

Impact		Shelter	Food	Agriculture/Livelihoods
High	Definition	Severe damage: Total loss or location no longer safe. (Govt grades C & D Sagaing)	Need for 3 months food support 13,000/person/month	50 – 100% potential production loss a) Livestock and land prep b) Agricultural kit
	Suggested Value	650,000	39,000/person	a) 160,000/HH b) 110,000/HH
Medium	Definition	Moderate damage – major repairs required (Govt grade B)	Need for 2 months food support 13,000/person/month	25 – 50% potential production loss a) Livestock and land prep b) Agricultural kit
	Suggested Value	325,000	26,000/person	a) 80,000/HH b) 55,000/HH
Low	Definition	Minor Damage : Cleaning, minor repairs	Need for 1 months food support	0 - 25% potential production loss

<sup>27</sup> Email dated 16<sup>th</sup> September 2015

<sup>28</sup> Shelter Cluster Sitrep 21 October 2015

<sup>29</sup> Cash Working Group minutes dated 15<sup>th</sup> September 2015

<sup>30</sup> Shelter Cluster SitRep as of 21 October 2015 & email dated 23 November 2014.

		(Govt grade A)	13,000/person/month	a) Livestock and land prep b) Agricultural kit
	Suggested Value	70,000	13,000/person	a) 40,000/HH b) 22,500/HH

### Development Agencies

From the Shelter coordination meeting on 16<sup>th</sup> September 2015<sup>31</sup>, INGOs reported the following response in Chin State:

**IOM:** Received 10,000 shelter kits, 2,000 tarpaulins and 10,000 mosquito nets. Of this, Chin State overall has received 3830 shelter kits in total.<sup>32</sup> All tarpaulins will be given to KMSS to distribute with local CBOs in Chin State, as well as whatever number of mosquito nets are needed there. IOM will also distribute 11,000 blankets in December and kitchen sets in January.

**IFRC/MRCS:** Establishing an office in Kalay to respond more to Chin State, starting with cash transfers. It has been giving non-food items to households in Paletwa.

**UNHCR:** Has given out family tents in Hakha (242), Falam (27), Tedim (169), Tonzang (79), Mindat (123) Matupi (41) and Kanpetlet (39).

**ADRA:** Is only working in Kalay for now, and has started giving out cash grants of between 1 to 2 lakh for shelter.

**KMSS and Hakha Rescue Committee:** are planning to construct more temporary shelters (550 units, 350 by KMSS and 200 by HRC) for displaced people in Hakha. KMSS is raising funds for the construction and there is no update about the funding at the meeting time. HRC would proceed to construct the mentioned temporary shelters.

There is **minimal reported shelter response for the population of Paletwa** where 1,129 houses<sup>33</sup> (CCERR data) are reported destroyed by landslide. IFRC has given out non-food items there (i.e. shelter tool kits, kitchen sets, hygiene kits, dignity kits)<sup>34</sup>.

Overall, **the response from the international community has not been as strong in Chin State as in other flood-affected areas**, mainly due to access. The Shelter Cluster strongly recommends donor and INGO support local CSOs in their response.

### Proposed Next Steps

The Shelter Cluster Strategy dated 10<sup>th</sup> November 2015 recommends: **“Upgrading of tents and improving living conditions during the temporary period, which may last a year before the construction of durable solutions by the local government and some shelter partners, is now a priority as the cold season begins.”** The Shelter Cluster recommends that winterization of shelters should be accomplished as soon as possible through the upgrading of emergency shelters, construction of temporary shelters, and distribution of heating solutions.

The PFLNA recommends that: “The recovery strategy outlined envisions government working in collaboration with partners to build on recent policy advances in housing and social protection and on the new provisional Myanmar National Building Code. The housing recovery program will allow government to partially finance and oversee a homeowner-driven repair and reconstruction program that will promote safe building practices.” It also suggested that perhaps the way shelter is constructed in Chin State might have to be rethought: “Furthermore, buildings in Chin State are often constructed on steep hillsides with timber posts used to support the housing structure on the

<sup>31</sup> Shelter Cluster Sitrep 16 September 2015

<sup>32</sup> Shelter Cluster National Situation Report dated 28<sup>th</sup> September 2015

<sup>33</sup> Per CCERR data, 20 October 2015.

<sup>34</sup> Shelter Cluster SitRep dated 21 October 2015.



"downhill" side. Whether this traditional building method needs to be modified to reduce risk and to give households the confidence to rebuild, or whether retrofitting of this style of house is advisable, is a question that will need to be answered during the house-to-house building assessment."

The CCERR recovery planning workshop proposes the following:

1. Camps need more technical support which has been requested to the Shelter Cluster leads in September 2015, especially with the coming of winter
2. IOM could also technically support with camp-management
3. Monetary and in-kind support i.e. materials, are needed for reconstruction of damaged houses
  - a. to prevent further deforestation, zinc sheets, formica tiles could be used in place of timber (which is locally preferred)
  - b. whether cash or material-support should be determined by local shelter committees; cash offers greater freedom for people to choose how they want to rebuild
4. A shelter committee, involving community members, should be formed to assist in designing appropriate shelters using sustainable ways
5. Camp management should be gender sensitive: Make sure that woman and children are not excluded from the benefits of shelter support or from the decision making process of reconstruction and management of funds
6. Wells and latrines need to be built along with houses
7. Community centres and religious buildings must be built in resettlement areas
8. At temporary shelter sites families request permanent plots of land for rebuilding their homes
9. If communities are resettled, villages will need to work out the boundaries of new village lands and cultivation lands, considering their previous arrangements
10. If resettled, communities need to have housing and farmland security
11. Unregistered houses and land (based on de facto use) should also be recognized by government assistance
12. Government and local committees should sit together with civil society groups to discuss reasonable ways to protect the environment and forests, i.e. to prevent more severe deforestation

## Food Security/Livelihoods

### The Needs

Farm fields destroyed (acres)	<b>5,911</b>	MoIA, 4/10/2015
Total fields destroyed (acres)	<b>15,918</b>	CCERR 20/10/2015
Upland fields (acres) (i.e. farmland for paddy, corn, etc.)	6,011	CCERR 20/10/2015
Lowland fields (acres) (i.e. riverside, lower fields, etc.)	7,523	CCERR 20/10/2015
Other fields (acres) (gardens, orchards)	2,383	CCERR 20/10/2015
Affected by landslides (acres)	<b>5,322</b>	MoIA, 31/08/2015
Damaged farmland re-cultivated (acres)	<b>371</b>	MoIA, 4/10/2015
Livestock damaged	<b>2,805</b>	CCERR 20/10/2015

The PFLNA stated that "as of September 16, 2015, the Ministry of Agriculture and Irrigation (MOAI) reported 601,116.3 ha of farmland (1,485,391 acres) had been flooded. This area represents around 20.4 percent of the total cultivated area in the affected areas (2.95 million ha, or 7.30 million acres). Of this flooded area, 196,277.8 ha (485,013 acres) were totally destroyed and are not expected to yield any crop... Damages in the agriculture sector also include the impact of landslides on 2,235.1 ha (5,523 acres) cultivated with paddy rice, tea, rubber, corn, and other crops in Chin and Shan.... Even



in regions with a smaller agricultural sector, the disaster has had a large impact. In Chin State, the K 9,515.3 million of total damages and losses represents 9.2 percent of agricultural regional GDP (4.1 percent of total regional GDP)."

In terms of impact on food security, the PFLNA says that "The production decrease will have a longer-term impacts on household income and food consumption which may lead to increased economic vulnerability and food insecurity...Agricultural land is still covered by water as well as mud, sand, and debris. This situation might hamper winter and summer crop production....Replanting has already been carried out in some regions/states, but the expected yield in these areas will quite likely be lower due to the delay in sowing and the impossibility of using good agricultural practices."

The PFLNA uses the FAO/WFP estimate for fields destroyed: "Approximately 2,154 hectares of agricultural land were destroyed by landslides across six townships in Chin State.<sup>35</sup>" The table above shows that there is huge discrepancy between the data reported by the MoIA and the CCERR—with the latter showing that almost **three times as many acres were destroyed** or 5,911 (MoIA) compared to **15,918 acres** recorded (CCERR).

Of the destroyed and damaged farmland only a fraction has been re-cultivated. Data recorded by Khamh Bawi Lian, Zotung Relief Committee, shows that 168 acres of lowland riverside paddy farms have been destroyed beyond rehabilitation, while 465 acres in the same northern area, Rezua region of Matupi Township, have been destroyed but may be rehabilitated over a 2-3 year timeframe. As a result of instances such as these and the overall scale of damage to valuable subsistence and commercial farmland there will likely be protracted food insecurity in Chin State. According to local estimates, food-insecurity is expected to continue until the end of 2016 (Oct-Nov).

---

<sup>35</sup> FAO and WFP 2015.

	Farm/Field Destroyed						Total Acres Destroyed	
	Upland Cultivation		Lowland Cultivation		Other/Garden			
	Acre	Est. Val	Acre	Est. Val	Acre	Est. Val	Acre	Est. Val
Falam			2500	1,330,061,000			2,500	
Hakha	405	6,685,000	467.00	35,067,500	188.00	6,439,680	1,060	48,192,180
Kanpetlet	1224.5	8,000,000	100.00	5,000,000	1300.00	25,000,000	2,625	
Matupi	326.855	95,000,000	1169.82	290,000,000			1,497	385,000,000
Mindat	84.7		121.72		80.85		287	
Paletwa	1708.6	468,993,000	927.75	444,715,800	88	61,554,000	2,724	975,262,800
Tedim	424.5	125,710,000	1985.75	574,430,000	205.50	130,000,130	2,616	830,140,130
Thantlang	1821		251.3		521.10		2,593	
Tonzang	16						16	
Chin State Total	6011.155		7523.34		2383.45		15,918	
Rakhine	131	50,500,000	9415.00	1,132,657,500	676.00	68,700,000	10,222	1,251,857,500
Magwe	1264.95		564.37		12.00	1,560,000	1,841	1,560,000
Sagaing					13.00		13	
Grand Total	7407.105		17502.71		3084.45		27,994	

Source: CCERR 20th November, 2015

The PFLNA states that “first estimates based on data from the Department of Livestock suggest that 274,260 animals were dead following the floods (around 0.6 percent of the herd in the affected areas, and 0.05 percent of the total national herd). Of these, 20,198 were large livestock (0.3 percent of the total number of cows, buffalos, pigs, and goats in the affected areas), and 254,062 were small livestock (0.7 percent of chickens and ducks in the affected areas).” The PFLNA does not mention livestock damage in Chin State, which is given below.

Township	Livestock Quantity
Falam	
Hakha	154
Kanpetlet	1,310
Matupi	157

<b>Mindat</b>	30
<b>Paletwa</b>	1,153
<b>Tedim</b>	
<b>Thantlang</b>	1
<b>Tonzang</b>	
<b>Chin State total</b>	<b>2,805</b>
<b>Rakhine</b>	907
<b>Magwe</b>	
<b>Sagaing</b>	5,424 <sup>36</sup>
<b>Grand Total</b>	<b>9,136</b>

Source: CCERR 20th November, 2015

According to the Agriculture & Livelihoods Impact Assessment carried out by FAO/WFP covering only four villages in Hakha and Falam townships, livelihoods recovery is challenged by several factors including continuing landslides; lost seeds (25% of seeds in villages surveyed); loss of farming tools such as ploughs, hoes, water tanks; and rise in food prices which have gone up an average of 35%; food stocks are half in local market. The crops affected most are paddy and maize.

In Southern Chin in Paletwa and parts of Rakhine State, half the population along the Kaladan River have been unable to replant because water levels are too high, and the water is too saline in that area. In addition rats have infested many parts of Paletwa, destroying the remaining crops.

These problems mean that replanting has been delayed in Chin State, leading to one of the lowest rates of replanting among all flood-affected states (371 acres). **As most people will not be able to plant winter crops, and planting is also not possible over the rainy season, this means that food aid or cash for food will required until the next harvest around October/November 2016.**

The PFLNA was not able to assess industry and commerce in Chin State: "Although Chin State was heavily affected, it was excluded from this survey because of time constraints and because there is less industry and commercial activity in this state relative to the other areas." In the recovery recommendations, the CCERR proposes that more off-farm livelihoods be supported as the return to agricultural livelihoods will likely take much longer than in other areas.

### The Response to Date

International donors have so far allocated over US\$2.7 million for livelihoods activities to purchase livestock, winter crops, agricultural support, cash-for-work, and other activities. The focus will be in Chin State, Rakhine, Sagaing, the Dry Zone and the Delta.<sup>37</sup>

Prior to the start of WFP food aid in many areas, many local Chin groups were supporting food delivery to affected areas. For example, Yangon-based CSOs sent rice to their respective townships. Since then, food needs have largely been met by the WFP, but CCERR field-based informants say that **some hard-reach-areas have not been reached** (such as Rezua near Matupi and Ru Village near Mindat), and **insufficient numbers** of affected households are still receiving food aid. For

<sup>36</sup> The large number in Sagaing is due to death of poultry.

<sup>37</sup> NNDMC/GoM Situation Report 6, 6<sup>th</sup> October 2015

example, in Matupi and Mindat, 20% of affected households are receiving food aid, while in Kanpetlet only 10% are receiving aid. Finally, **food aid coordination and storage needs to be better managed in the camps.**

The table below summarizes WFP's food donations to Chin State as of November 2015. It is delivering food to **17,683** people and cash grants (for food or assets) to **6,262** people. WFP with partners plan to continue food assistance **until early 2016** and have plans to start asset creation activities in coming months.

<b>As of November 2015</b>		
Falam	2211	
Tonzang	3879	
Mindat	2396	
Hakha	4012	
Paletwa	3362	Only started in Nov
Sami	1823	Only started in Nov
Total	<b>17683</b>	
Kalay	3262	Cash grants for food or assets
Tamu	2426	Cash grants for food or assets
Teddim	574	Cash grants for food or assets
Total	<b>6262</b>	

Source: WFP August Food Delivery Data

### Proposed Next Steps

The Food and Agriculture Organisation (FAO) is starting to coordinate delivery of seeds to the Chin State Government, but an integrated package of supports to livelihoods recovery will be needed for the winter planting season (only where fields have been cleared which is very little).<sup>38</sup> The State Agriculture Department said that **clearance of mud from farming fields is the first priority over the exploration of new farming areas.**

From the CCERR recovery planning workshop, the following recommendations were made:

#### Short-term

1. **Expand food aid coverage, particularly to hard-to-reach areas**
2. **At a minimum, rice, oil, and salt** is in high demand across Chin State
3. **Market prices** must be regulated
4. **Cash for work** should be introduced, but projects should be locally-driven
5. **Systematic food storage and distribution for camps is needed to ensure transparency** (it is suggested that IOM should be the technical lead for Camp Coordination and Camp Management (CCCM))
6. **To clean up farmland of debris, and building up the top soil**
7. **To start off –farm livelihoods**

#### Longer Term

1. Establish an **Agricultural Research Centre** to provide technical support to farmers such as crop research and the development of sustainable agriculture.
2. Seasonal crop analysis to grow more appropriate crops in different townships; these require improved storage, preservation

<sup>38</sup> OCHA-Hakha Coordination Meeting minutes, 7<sup>th</sup> September 2015

3. Develop more permanent agriculture as opposed to shifting cultivation
4. Provision of quality seeds and grains
5. Livestock replacement—appropriate to each area such as Mython for Chin Hills, but cattle for the lowlands of Sagaing and Magwe
6. Garden/orchard replantation
7. Training in livelihoods techniques: tracking market prices for crops, livestock caretaking, profitable gardening, food processing
8. If farmland cannot be restored, introduce vocational training with loans to start off-farm livelihoods
9. For relocated communities, they might have special needs i.e. difficulty in accessing farmlands; alternative livelihoods could be introduced
10. Protection of forested areas and the development of plantations for denuded areas to develop water catchment areas that have been affected; this supplies water needs, including for agriculture.
11. In lowlands of Magwe and Sagaing, need to rebuild irrigation canals
12. CCERR also advised<sup>39</sup> that there should be a different program for many of the Chin living in Rakhine State as their livelihoods are largely based around fishing – fishing nets and boats are needed rather than emergency crop alternatives.

## Infrastructure & Buildings

### The Needs

Damaged schools	64	MIRA 03/08/15	74	CCERR 20/10/15
Government buildings destroyed	38	Chin State Gov't 08/15	36	CCERR 20/10/15
Religious buildings destroyed	28	Chin State Gov't 08/15	48	CCERR 20/10/15
Commercial buildings destroyed			26	CCERR 20/10/15
Bridges destroyed	288	Chin State Gov't 08/15	369	CCERR 20/10/15
Roads destroyed	248	Chin State Gov't 08/15	377	CCERR 20/10/15
Roads destroyed in feet			301,798	CCERR 20/10/15

Again, the data on infrastructure shows that the official data tends to underestimate the extent of damage in Chin State. In nearly all types of infrastructural damage, CCERR data is higher.

This type of damage has been made more severe because, according to the PFLNA, “Much of Chin State’s damage, for example, was the result of landslides.” It goes on to say that “Road and rail infrastructure will remain vulnerable to further damage and total failure until permanent repair works can be completed. The Chin State road links of Hakha-Gangaw and Kale-Hakha as well as Kalewa-Monywa and Kawlin–Kyun Hla in Sagaing all remain particularly vulnerable. While there is no immediate threat from the monsoon rainfalls, further storms could re-sever links on the vulnerable road and rail network. Saturated soils in hilly areas are also vulnerable to earthquake-induced slope failures, so seismic risks to transport infrastructure are elevated until permanent repairs can be made. The development and implementation of revised design and construction standards as part of the recovery plan will address some of these risks.”

This infrastructural damage results in higher costs for recovery: “Chin State's recovery will be especially challenging. Due to the mountainous topography and limited roadway network, construction

<sup>39</sup> First CCERR Meeting on 14-15 August 2015

costs in Chin State are ordinarily around 30 percent higher than in other states, according to government figures. The landslides blocked and destabilized roads. Although roads are being reopened, major reconstruction projects will be required for full recovery of the road network. As shown in the transport sector chapter of this PFLNA, Chin State represents more than 30 percent of all disaster effects in the transport sector.”

The tables below show different types of infrastructural damage by township.

	<b>Bridge Destroyed</b>	
<b>Township</b>	<b>No.</b>	<b>Est. Val</b>
Falam	62	
Hakha	24	30,920,000
Kanpetlet	58	45,800,100
Matupi	41	
Mindat	60	51,378,000
Paletwa	27	67,704,350
Tedim	56	790,000,000
Thantlang	28	
Tonzang	13	
<b>Chin Tsp. Totals</b>	<b>369</b>	<b>985,802,450</b>
Rakhine	13	10,540,000
Magwe		
Sagaing		
<b>Grand Total</b>	<b>382</b>	<b>996,342,450</b>

Source: CCERR 20th November, 2015

The greatest number of bridges destroyed is in Falam, Mindat and Tedim.

	<b>Roads Destroyed</b>		
<b>Township</b>	<b>No.</b>	<b>Length ft</b>	<b>Est. Val</b>
Falam	122		
Hakha	21		17,000,000
Kanpetlet	29	411,840	48,260,000
Matupi		80,456	
Mindat	68	542	1,332,700,000
Paletwa	19	30,102	18,297,150
Tedim	40		7,644,020

Thantlang	78	190,698	
Tonzang			
<b>Chin Tsp. Totals</b>	<b>377</b>	<b>713,638</b>	<b>1,423,901,170</b>
Rakhine	19		55,700,000
Magwe			
Sagaing			
<b>Grand Total</b>	<b>396</b>	<b>713,638</b>	<b>1,479,601,170</b>

Source: CCERR 20th November, 2015

The greatest number of roads destroyed is in Falam, Thantlang and Mindat.

	Gov't Buildings Destroyed		School Destroyed		Religious Building Destroyed		Community Buildings Destroyed		Commercial Buildings Destroyed	Total Buildings Destroyed or Damaged
Township	No.	Est. Val	No.	Est. Val	No.	Est. Val	No.	Est. Val	No.	No.
Falam			2	35,000,000	8	55,290,000				10
Hakha	5		4	400,000	2		2			13
Kanpetlet			7	32,000,000	2	1,000,000			1	10
Matupi	7		1				2		18	28
Mindat	3		5		6		2		3	19
Paletwa	11	5,975,000	18	41,067,000	11	16,457,000	8	2,090,000	N/A	49
Tedim	4	8,000,000	15	30,000,000	15	30,000,000				34
Thantlang	3		5		1				4	19
Tonzang			1		1					2
Rakhine	3	2,700,000	12	48,686,500			1	460,000		16
Magwe			4		2					6
Sagaing										
<b>Grand Total</b>	<b>36</b>		<b>74</b>		<b>48</b>		<b>15</b>		<b>26</b>	<b>206</b>

Source: CCERR 20 November 2015

The greatest number of public buildings (Government buildings, schools, religious buildings, community buildings, commercial buildings) destroyed is in Paletwa, Tedim and Matupi.

## The Response to Date

### Schools

Across the country, the Ministry of Education spent MMK 4,374 million (US\$3.6 million) to clean and rehabilitate schools, to provide materials such as textbooks and uniforms, and to support nutrition in school.

The MIRA concluded that: “Despite these damages to infrastructure, education activities resumed in many locations either by doubling the shifts in functional schools or providing alternative/temporary learning spaces.”<sup>40</sup> There are a number of local efforts to rebuild schools: The Hakha Rescue Committee reported that children continue to attend school in Hakha close to the camps. Children are transported to and from school, and materials have been provided. Similarly, the Paletwa Relief and Rescue Committee built some schools.

### Roads

The CSG has been deploying heavy machinery to make roads passable but it has limited budget for this.<sup>41</sup> As of 5<sup>th</sup> September,<sup>42</sup> the Department for Rural Development already submitted information on damaged roads, bridges, water supply and electricity sources to the union level. The information published in the state newspaper is that JICA had MoU with the government for road construction in Chin and in Kachin state. However, the actual starting time is unknown.<sup>43</sup>

According to the PFLNA, “Based on the recovery plans discussed with the government, several larger initiatives have been proposed in Chin State including upgrading the Hakha-Gangaw, Kale-Falam-Hakha and Kalewa-Tamu roads. No comprehensive feasibility studies have been undertaken for these initiatives.”

The PFLNA also says efforts are being made to prepare a workforce for reconstructing infrastructure. It says that: “The Ministry of Labor, Employment and Social Security (MOLES) has designed a program to offer high-frequency training on carpentry, brick masonry, and ironwork in places such as Haka and Kalay in Chin State. With the collaboration of the Ministry of Construction and other relevant line ministries, MOLES will act as a focal ministry in designing and implementing training programs for elementary skills required in rural roadwork and reconstruction. The ministry plans to send mobile training teams, in conjunction with existing vocational training programs, to affected areas to train people in carpentry, masonry, electrical work, and bricklaying.”

## Proposed Next Steps

### Roads

1. Roads and bridges in and out of towns and roads to schools should be prioritised; these should not be temporary solutions but sustainably made;
  - a. For example, Paletwa– Matupi Rd should be reconstructed as soon as possible as this is very important to connect to Hakha and other areas of Chin State. Walking from Paletwa to Hakha takes 15-20 days.
2. There is a need to clear areas that are blocked by landslides, such as the area around Nga Sha Village – blocking Kaladan River. This is a national issue for Chin in Paletwa.
3. Village to Village roads are very important for social mobilisation and business purpose
4. Build back bridges, the majority of which have been destroyed in each township
  - a. Build dykes near at bridges to protect villages from high water

---

<sup>40</sup> Multi-sector Initial Rapid Assessment (MIRA), as of 3<sup>rd</sup> September 2015

<sup>41</sup> OCHA-Hakha Coordination Meeting minutes, 7<sup>th</sup> September 2015

<sup>42</sup> Reported by WASH Cluster (UNICEF) on 5<sup>th</sup> September 2015

<sup>43</sup> OCHA-Hakha Coordination Meeting minutes, 9<sup>th</sup> October 2015



- b. To restore former water course of streams and to extract large stones
- c. Construct bridges according to the predictions for flood levels
- 5. Motorbikes are the main form of transportation – supply parts and bikes for affected areas

### Buildings

- 1. Rebuild health centres, hospitals and dispensaries to meet the needs of the size of the local community, and to ensure there is enough medicine at the dispensaries.
- 2. Rebuild schools with proper latrines, water access, sports grounds; construct them according to the density of population in an area
- 3. Quality drainage systems to be developed
- 4. Government staff housing reconstruction
- 5. Community hall/building/ football ground reconstruction
- 6. Rice Bank reconstruction
- 7. Nursery schools& homes for the age reconstruction

### Governance

- 1. **Locally formed Independent Body** to inform appropriate reconstruction; to monitor construction companies for quality control; to negotiate with companies; to do stakeholder mapping to understand who is involved, who are the beneficiaries
- 2. Government should also support **local initiatives** for the rehabilitation of infrastructure
- 3. Use infrastructure construction to **create employment opportunities** for affected people

## WASH

### The Needs

% assessed locations without drinking water	46	MIRA
% assessed locations where nobody has access to latrines	37	MIRA

	Public Utilities Water/Energy Supply		
Township	No.	Water Pipe ft.	Est. Val
Falam	15		
Hakha	56		7,796,400
Kanpetlet	10		24,800,000
Matupi	56	35004	
Mindat			
Paletwa	71		39,295,500
Tedim		3.1	4,890,000
Thantlang	4	521.00	48
Tonzang			
<b>Chin Tsp. Totals</b>	<b>212</b>	<b>35528.1</b>	<b>76,781,948</b>
Rakhine	9		88,235,000
Magwe			
Sagaing			
<b>Grand Total</b>	<b>221</b>	<b>35528.1</b>	<b>165,016,948</b>

Source: CCERR, 20 November 2015

**Safe drinking water is among the top issues for community.** As of the end of September, the WASH Cluster estimated that **159 out of 238 affected villages still have WASH needs**<sup>44</sup>.

The greatest number of water pipes damaged is in Paletwa, Hakha and Matupi. These water pipes are connected to gravity-piped water systems, which according to the PFLNA “experienced localized destruction from substantial landslides.” Due to poor road access, materials cost have been higher than the others area and also delay implementation; materials such as Hard wood, Bamboo are very difficult to buy in Hakha.

Per the WASH Cluster minutes dated 25<sup>th</sup> August 2015<sup>45</sup>, the WASH needs and recommendations are as follows:

Area	Situation	Recommended Actions
Emergency Camps	Water supply is sufficient but there may be water shortages when the rains stop. Existing latrines coverage is enough.	The existing Gravity Flow Systems (GFS) need to be upgraded at least 2 new GFS need to be constructed in Tiddim. UNICEF supported the state Health department (SHD) in emergency latrines construction at all camps. The emergencies latrines were not accessible easily for children, disable and old aged people because latrines are constructed at the slope of a mountain. Solid waste management; separate bathing facilities for men & women; Hygiene awareness sessions are needed
Affected villages	It is hard to get the information for these villages	WASH Assessments are needed in each village
Schools	67 schools damaged; Water supply is needed in 33 schools; 66 latrines are also needed	Union level education already approved budget for those latrines. The fixing of water pipes in the 33 schools is estimated at MMK 89,925,000
Health Centres	Most WASH facilities have not been damaged	Rain Water Collection Tanks should be considered for health centres for better water storage

### The Response to Date

The table below shows WASH distributions by state/region per Ministry of Health data (4 October 2015).<sup>46</sup> Chin State has the fewest numbers of water points cleaned.

<sup>44</sup> WASH Cluster Meeting needs summary 26<sup>th</sup> September 2015

<sup>45</sup> WASH Cluster Meeting Minutes, 25<sup>th</sup> August 2015

<sup>46</sup> NNDMC/GoM Situation Report 6, 6<sup>th</sup> October 2015

State/Region	Water points cleaned	Purification tablets distributed	Hygiene kits distributed
Sagaing	45,773	10,752	3,571
Rakhine	28,124	174,451	26,608
Bago	19,146	-	319
Ayeyarwady	14,088	4,000	563
Magway	11,395	-	4,968
Kachin	9,522	17,000	336
Mandalay	4,518	-	330
Yangon	3,213	-	378
Mon	1,048	-	159
Shan	235	-	20
Chin	126	800	1,447
Kayin	-	-	300
<b>Total</b>		<b>137,188</b>	<b>207,003</b>
			<b>38,999</b>

The following agencies have been responding to WASH needs in Chin State. Most of the interventions are focused in the North, except for IRC in Paletwa.

### **Water Supply**

#### ***State DRD implementing affected village's water supply condition***

The table below is DRD implementing renovation and or rehabilitation of gravity flow water supply for floods/landslides affected villages in Chin State.

NO	Township	Affected villages	HH	Population	Remark
1	Thantlang	2	121	344	Implementation ongoing
2	Hakha	1	22	157	Implementation ongoing
3	Falam	22	1561	8002	Implementation ongoing
4	Tedim	4	313	1445	Implementation ongoing
5	Matupi	3	105	583	Implementation ongoing
6	Kanpetlet	2	45	307	Implementation ongoing
7	Paletwa	9	585	3604	Implementation ongoing
	7 Townships	43 villages	2752	14442	

State Department for Rural Development estimated renovation and rehabilitation cost for damage lists of village water systems and UNICEF provided budget for those 43 village's water supply rehabilitation and renovation. UNICEF assessed that there are still another 65 villages in Chin state that are in need of water facility renovation.

#### ***Hakha/Falam/Thantlang***

The existing relocation sites in Hakha 5 pipe water supply systems have been functioning and the population coverage of water supply was more than 100%. But 2 water sources here are not functioning

SCI provided 5 pipe water supply systems in 5 affected villages of Hakha Township.

KMSS Hakha offices has supported water supply system for 5 affected villages in Hakha, 2 affected villages in Falam and one affected village in Thantlang Townships.

Hakha Youth Volunteer (HYV) used its water treatment unit to produce 300 liter/hour; this water is being distributed with 5 gallon plastic buckets at camps

#### ***Tedim/Tonzang***

Two relocation sites can access water from Town Municipal pipe line.

- World Vision distributed drinking water in 2 camps at Tedim and provided pipe water system to two affected villages. It has conducted assessments in 16 villages.
- KPN is working in 11 villages in Tedim on water source renovation
- Ar Yone Oo is supporting 3 villages in Tonzang for installation of new water points
- KMSS-Kalay has renovated or rehabilitated village's water supply system in 15 affected villages of Tedim Township and 3 affected villages of Tonzang Township.

### **Sanitation**

82 semi-permanent latrines with hand washing points constructed by SCI in 5 relocation sites of Hakha. The existing emergency latrines decommission process not yet started in the camp. 8 public bathing spaces of 32 rooms have available in 5 relocations sites in Hakha. 75 latrine sanitary kits have been already distributed by SCI in Hakha camps. SCI have already procured communal refuse bin for 5 relocation sites.

In Tedim, 8 emergency latrines have been still using in current relocation site of indoor stadium but not cover the population. Some house hold already moved to near the government constructing relocation area and 4 temporary latrines only accessible. The government housing package excluded in household latrine and needed to support household latrines in that relocation sites.

### **Hygiene**

UNICEF provided US\$150,000 to SCI to put WASH facilities in the camps. 90 latrines will be constructed in the camps in Hakha. In 5 relocation sites, SCI has already formed WASH committees and starting to conduct hygiene education session.

KMSS- Kalay distributed 741 hygiene kits to 15 affected villages in Tedim and 3 affected villages in Tonzang. SCI has distributed 34 hygiene kits for Natzang village in Tonzang Township.

GDI distributed 1000 hygiene kits in Falam, Hakha, Paletwa, Tonzang and Tedim.

### **Proposed Next Steps**

What WASH Cluster in their Chin Report dated 19<sup>th</sup> November advised that more agencies are needed to address the WASH needs in the state. They also recommended that:

- Solid Waste management and water supply operation systems should be fixed in collaboration with Town Municipal Department.
- Protection needs to be integrated into the design of the WASH response

The CCERR network came up with the following recommendations:

1. **Continue distribution of clean water** particularly to displaced people, water purification tablets, water cleaning machines
2. **Drinking Water with pipes to villages (using gravity flow systems in the uplands); dig/clean wells in the lowlands of Sagaing and Magwe**
3. **Irrigation** needed
4. **Good drainage**
5. **Latrines with septic tanks** that are easily accessible for young and aged, also gender sensitive
6. **Sand filtration method or locally designed filtration** (such as those supported by IRC in Paletwa); this is particularly needed when vehicles and shifting cultivation practices can pollute rivers
7. **Projects could be more sustainable** if local people were given the resources and training to produce for themselves locally; explore use of local materials in the rebuilding

8. **Protection and Gender Issue:** Access to fresh water should be decided in consultation with the whole community, ensuring that the needs of vulnerable groups are met in the design (i.e. lighting for pathway of latrines, inside lockable latrine)
9. **Trainings** on water conversation techniques, water storage, sanitation

## Health & Nutrition

### The Needs

Damaged health facilities	7	MIRA	Total yes responses for last 2 weeks before MIRA assessment	
% locations with at least 1 health concern	75	MIRA	Malaria	40
% of locations with not enough health supplies	42	MIRA	Diarrhea	36
% of assessed locations with partial of fully destroyed health facilities	45	MIRA	Skin infections	19
% of assessed locations where health care is not available on site	55	MIRA	Trauma	18
% of assessed villages where people had health care once in 2 weeks	32	MIRA	Acute respiratory tract infection	18

**CCERR field teams have not yet gathered any data on health needs. This does not mean that there are no health needs. It probably means that field teams need training on monitoring health needs.**

Chin State tended to have access to less health care services even before the floods. The PFLNA says: “Access to and utilization of health services is still inadequate. This is due to geographical, financial, and cultural barriers, especially in the disaster-affected states and regions. For example, the proportion of births attended by skilled health personnel was 74.8 percent for the country in 2014, but only 53.8 percent in Chin State, 54.3 percent in Rakhine, and 67.4 percent in Ayeyarwaddy...In 2015, immunization coverage (pentavalent vaccine) was 38 percent in Chin State as of June, 63 percent in Magway as of August, 35 percent in Rakhine as of June, and 61 percent in Sagaing as of August.”<sup>47</sup> ...The Multiple Indicator Cluster Survey found that overall, 6.7 percent of children under five had diarrhea in the two weeks preceding the survey, *with the highest prevalence—13.1 percent—in Chin State*. Diarrhea and dysentery are among the six leading causes of mortality and morbidity in Myanmar.<sup>48</sup>

Malnutrition was a major concern in some areas prior to the floods, particularly in Chin and Rakhine states, and in Ayeyarwady and Magwe regions. The nutritional status of children could further decline in these regions, as well as in Bago and Sagaing regions, due to compromised water sources and inadequate access to nutritional food, resulting in increased mortality risks for children under five.<sup>49</sup>

### The Response to Date

#### Health Services

According to the GoM’s Situation Report dated 6<sup>th</sup> October 2015, “on a national level, Township Public Health Departments and Rapid Response Teams from the Central Epidemiology Unit are continuing camp management interventions to prevent the spread of communicable diseases. There is a risk of waterborne communicable diseases due to limited access to clean water sources for people returning

<sup>47</sup> Note that these were the data available at the time of the assessment.

<sup>48</sup> DHP 2013; MOH 2011.

<sup>49</sup> NNDMC/GoM Situation Report 6, 6<sup>th</sup> October 2015

to their home. Cleaning of water sources and the environment is being coordinated by Public Health Departments, local authorities, communities and humanitarian organizations. Prevention and control of vector-borne diseases like Dengue Haemorrhagic Fever and Japanese Encephalitis are also underway. All routine immunization services have resumed. The Early Warning Alert and Response System (EWARS) was established and is active.<sup>50</sup>

In Chin State, nine mobile clinics and 19 temporary clinics are operating in affected areas to provide essential health services and prevent communicable diseases. The Ministry of Health and humanitarian agencies have distributed bed nets, dignity kits, hygiene/ health kits, injectable contraceptives, clean delivery kits, and medicines.<sup>51</sup> According to the PFLNA, five primary-level health facilities in Chin State and Sagaing Region, including rural health centers and subcenters, had not yet resumed delivering health services as of October 1, 2015

In Hakha, the Health Recovery Committee is led by PuCung Hu. This committee has trained community members on hygiene, blood donations and fund management for purchase of medicine. The committee coordinates transportation for health care needs.

### *Treating Malnutrition*

Screening for malnutrition is also taking place in other parts of Rakhine and in Chin State to identify and support malnourished children. Humanitarian partners will start blanket supplementary feeding (with micronutrients) for 13,300 children between 6-59 months in October in Chin and Sagaing, as well as in Rakhine.<sup>52</sup>

### *Proposed Next Steps*

Local field teams have not collective information on health needs. There is likely a need to train them on how to monitor and track health needs in ongoing assessments.

1. **Immediate Need:** Warm coats for winter
2. **Mobile health care teams** needed (Mae Tao Clinic has trained some Chin Back Pack Health workers – unsure of their status regarding flood response); this is particularly needed for remote villages
3. **Psychosocial support** (UNFPA programme potential)
4. **Women's health needs**
  - a. hygiene kits, reproductive kits
  - b. Training and vaccination programme for pregnant women
  - c. Training of midwives
5. **Hospital for most part not well equipped** i.e. Samee
  - a. Doctors are often not there
  - b. Lack of regulation or proper training for pharmacies, medications poorly regulated.
  - c. Health care staff must be trained and provided from local population.
6. **Special nutrition** programme for children i.e. in all primary schools, and elderly population
7. **Illness Prevention:** Malaria and diarrhoea prevention; at the Hakha coordination meeting on 7th September 2015, the Chief Minister said mosquito nets are needed
8. HIV/TB patients treatment/medical assistant
9. Health education training and trainees

---

<sup>50</sup> NNDMC/GoM Situation Report 6, 6<sup>th</sup> October 2015

<sup>51</sup> ibid

<sup>52</sup> ibid

## Protection

### The Needs

% women report violence in the home	29	MIRA
% women unable to access services & resources	38	MIRA
% children increased risk moving in the area	30	MIRA

**CCERR field teams have not yet gathered any data on protection needs, although a few incidents have been reported. It probably means that field teams need training on monitoring health needs.**

In Chin State, it is not common practice for people to turn to psychosocial counselling. CCERR members believe that **most peoples' traumas need to be treated by addressing the material losses, while the counselling could be complementary to this.** On the other hand, there are specific examples of vulnerability that should be considered: there are many single women-headed households that face special needs such as in Paletwa, where women have to carry heavy rice bags over hills. There was one rape case reported in the Hakha camp on 23<sup>rd</sup> October<sup>53</sup>.

Humanitarian partners report that the safety of women and girls continues to be of serious concern, particularly where people are staying in temporary accommodations that are overcrowded, with little or no privacy. For example, an assessment on Gender Based Violence (GBV) conducted by Protection Sector Partners in Hakha Township, Chin State, identified GBV as a key concern.<sup>54</sup>

Based on lessons learnt from Cyclone Nargis, medium-term child protection concerns for townships that were severely affected include a possible rise in child trafficking, child labour and early marriage as families struggle to recover. The Government is prioritizing social protection of vulnerable groups, including children, the elderly, pregnant women and people with disabilities, as part of the recovery process. Strong social protection and support, including a presence of DSW social workers at township level, plays a key role in responding to violence, exploitation and abuse.<sup>55</sup>

### The Response to Date

As of end of September 2015, UNICEF<sup>56</sup> has been supporting GREEN in Hakha Township and Tedim Baptist Convention (TBC) in Tonzang and Tedim to deliver psycho-social support to affected communities, as well as child protection case management programming (identify children at risk of abuse/exploitation/neglect or survivors thereof). UNICEF is concerned that protection risks are likely to increase in the aftermath of natural disasters, such as trafficking, early marriage and child labour. UNICEF is running 10 temporary Child Friendly Spaces, in addition to 9 mobile teams who are providing psycho-social support in hard-to-reach and returnee areas. GREEN and TBC are collecting weekly data on their interventions – last week, over 2,000 boys and girls have been reached (in green). They aim to reach around 12,000 children with PSS over the coming two months.

---

<sup>53</sup> Source: UNICEF-Hakha and GDI

<sup>54</sup> *ibid*

<sup>55</sup> NNDMC/GoM Situation Report 6, 6<sup>th</sup> October 2015

<sup>56</sup> Email update from UNICEF dated 29<sup>th</sup> September 2015



Partner	State	Township	Duration	#CFS	#mob	# CFS	# mobile teams	TOTALS
GREEN	Chin	Hakha	3 months	8	4	860	812	1,672
Tedim Baptist Convention	Chin	Tedim, Tongzang	3 months	2	5	-	376	376
<b>TOTALS</b>				<b>10</b>	<b>9</b>	<b>860</b>	<b>1,188</b>	<b>2,048</b>

Source: UNICEF

Similarly, UNFPA is supporting Department of Social Welfare caseworkers in Chin State to provide a psychosocial response for both the general population as well as for the women and girls. They have established women friendly spaces and community level women's groups who can be provided with capacity to support each other and identify and refer cases of GBV to the health, legal or PSS support systems.

From a protection perspective for the long-term recovery planning, UNICEF is advocating Department of Social Welfare to have a more widespread presence at township level with trained case managers/social workers who can take on statutory cases of abuse/exploitation/violence – this needs to go hand in hand with NGO/CBO support, to work on awareness arising, identify survivors or those at risk of, monitor protection issues and assist non-statutory cases.

GDI is conducting Sphere standards trainings for local rescue committees in Teddim, Hakha and Paletwa. It will also conduct gender-based violence trainings and gender-needs assessments in early 2016.

Protection risks also exist in shelters<sup>57</sup>, as many families are likely to remain temporarily displaced in Hakha Township in particular. The Hakha Rescue Committee has a security committee to ensure that camps are safe, but there have been a few incidents of theft and one homicide. There is a need to monitor these groups and put into place security focal points to ensure the safety of camps, etc. Around Chin State, religious leaders continue to play an important role by leading prayers and continuing sermons.

### Proposed Next Steps

1. To use talk shows to give encouragement and healing to trauma (partner with UNFPA and UNICEF for this)
2. Special consideration should be given to vulnerable groups in the coordination of human services
3. GDI is planning to do a gender needs assessment for 5 townships: Tiddem, Falam, Hakha, Paletwa and Mindat
4. Vocational training for women
5. Sports facilities for youth and toys for children
6. Round table debate programmes for elderly

<sup>57</sup> Hakha Rescue Committee Meeting minutes, 3<sup>rd</sup> September 2015



## Building Back Better

Cyclone Komen has been described as one of the most far reaching natural disasters ever experienced in Myanmar and the worst in the recorded history of the Chin people. For a comprehensive recovery, all necessary resources must be made available to empower Chin civil society and local government. Now is the time for a show of strength based on unity, displaying to the world the efficiency and resilience of the country in the face of such widespread destruction.

This also represents an opportunity for the Union Government to earn the trust and support of local communities through swift, systematic and sustainable recovery efforts while building greater levels of trust in the peace building process. To this end, there is an urgent need for a coordinated effort between local relief groups, the government and development actors, both domestic and international. The effects of climate change and environmental degradation must also be considered if we are to build a more sustainable future. In summary, this is an opportunity to build back better.

The Myanmar Institute for Integrated Development (MIID) provided technical support to the Chin State Government in developing its Comprehensive 5-year Development Plan (2016-2021). This plan includes a wide menu of ideas for the holistic development of Chin State that can be considered when planning for the state's recovery. The plan said, "The biggest challenge facing Chin State is turnaround of the small holder agricultural sector to the point where households are producing a surplus for their own needs and that surplus can be sold to contribute to the economic growth of the state." This would require not only outside funding sources, but also an increase in the Chin state budget allocated to agriculture, which until now, is less than 3% of the 2014-15 budget (see Annex 1). The next section introduces the Plan's ideas for developing Chin State over the next five years.

## Food security & Livelihoods

**Diversify Shifting Agriculture:** Most cultivation in Chin State uses shifting agriculture, but in some areas where there is higher population density, the fallow period is becoming shorter and the crop yields are becoming lower. On less steep land, alternative income generation schemes can include: a) permanent pastures and fodder trees for intensively feeding cattle and Mithun i.e. a local ox; b) horticulture such as fruit trees and grape vines; c) intensifying production of Elephant Foot Yam and d) commercial forestry.

**Forestry** is already a major contributor to the household economy in Chin State. All households rely on locally cut wood for their heating and cooking and nearly all engage in cutting and selling some firewood for cash. Most of this activity is *informal and unregistered* and there is some danger of the resource being depleted. The issues facing Chin's forestry sector are: (a) the shortening of shifting cultivation cycles, which means less secondary forest for household fuel wood; (b) land issues that impede the establishment of community forests in some areas; (c) uncontrolled burning for shifting cultivation is causing significant loss of permanent forest; and (d) the need to substantially upgrade technical knowledge of sustainable forest management, from the household level to the State level. The potential of the Chin's forestry sector is very significant. The forests are possibly the State's largest economic resource and there is considerable potential for: (a) increased benefits from the introduction of sustainable forest management practices; (b) investment in community forest initiatives; and (c) investment in the sustainable use of the rich diversity of forest products such as pine resin and medicinal plants including orchids and elephant foot yam.

**Backyard fisheries** are considered to have the potential to improve household/local community nutrition. At present there is some small-scale fish production in Chin State, however, the technology applied is very weak and there has been little effort made in selecting species that would best suit the

environmental conditions. With Chin's abundant rainfall there is considerable potential to expand fish production.

**Addressing Climate Change in Agriculture:** In Chin State less than 3% of the land is irrigated, leading farming communities to rely on high-risk rain-fed agriculture. Natural disasters such as this recent flood, droughts, and rat infestations resulting in severe food shortages in the past make Chin communities highly vulnerable to food insecurity. Water storage facilities need to be developed for irrigation and would be the most effective way to address the problem. This would allow double cropping. If considered together with hydropower, storage systems could fill dual roles of generating electricity and providing water for irrigation, particularly dry season irrigation. Sales of electricity could be used to cover the development costs and increase in agricultural production from irrigation would benefit both farmers and the economy of the State.

**Improving Agricultural Output:** Increasing the output of crops whether that be for maize, upland rice, paddy rice or for fruit trees or grape vines currently being grown should be a priority. While some improved rice and maize seed does get distributed each year by the Department of Agriculture and Irrigation, it is not sufficient to meet demand or make a significant contribution to an increase in production. The same applies for fruit tree crops where there exist significant price differences and market preferences for modern superior tasting varieties of fruit. It is important to plant the best available varieties because of substantial establishment costs and long growing periods for trees. On-farm seed multiplication can ensure sufficient improved seed are available to supply all farmers willing to use it. The new Agricultural College in Chin State would be an ideal site for testing and organizing seed multiplication initiatives.

Another way to increase crop yield is the supply of plant nutrients in the form of fertilizers. So far, chemical fertilizers are not used in Chin State, but modest amounts might help with productivity. The judicious use of chemical fertilizer on rice and maize has been shown to provide a 30% increase in grain yield and it is ironic that Chin currently has a shortfall of about 30% meeting its grain requirements.

**Livestock-Raising:** At present the main constraints facing livestock producers relate to: a) lack of effective support for disease control; b) poor nutrition and husbandry at farm level; and, c) lack of credit for starting or expanding a livestock enterprise. The potential for livestock production lies in: a) large amounts of land currently left fallow as part of the shifting cultivation cycle which could produce vast amounts of green fodder to feed cattle, Mithun and goats; b) improving the delivery of disease control procedures that could substantially increase production in all species at a minimum cost; c) intensive livestock production in households that have switched to permanent agriculture that would maintain soil fertility through the recycling of manure.

**Strengthen Markets:** There is a need to increase awareness of market requirements and develop value chain links for both existing products and new products.

Market information is vitally important for all levels of business; from the farmer-producer to the entrepreneurs marketing value added or

**Food Security & Nutrition:** Another proposal to LIFT focuses on food security and nutrition in Hakha township. The project proposes an integrated approach that would support poor rural households through a combination of advisory services for improved production and sale of cash crops, the establishment of backyard livestock and fish production, nutrition education, women's leadership and the strengthening of local institutions involved in agricultural extension education.

**Market Support & Natural Resources Management:** One proposal to LIFT aims to support smallholder farmers to access to more profitable markets through the provision of efficient and market-oriented farmer advisory services. In parallel the project will serve to increase the resilience of communities via a series of measures oriented at the sustainable management of natural resources, including specific tools for adaptation to and mitigation of the effects of climate change. The planned target area includes 120 remote villages of Thantlang, Hakha, Falam, Tedim and Tonzang Townships of Central and Northern Chin State.

finished products. In the case of Chin State there are two issues impeding progress on supplying market intelligence: The first is the small size/volume of Chin State's production and the second is poor development of market chains or organizational structures within any of those market chains. Some projects are strengthening market linkages for specific products. For example, a project in Mindat is helping households to process the Elephant Foot Yam to increase the selling price and connect to traders groups to set more favourable selling prices. To support more producers, the development can use new mobile networks, in partnership with mobile company providers, to increase sharing of market information.

There are numerous other impediments to doing business in Chin State. Lack of access to credit is an impediment in all development sectors at present, but is most serious in the SME sector. Other challenges include access of a reliable power source and the cost of transportation. Improvement of the electrical power system and the road network is clearly the long-term objective but to get businesses moving, the Chin State Government should focus its efforts in specific locations to meet the needs of business within a much shorter timeframe.

The Plan identifies the potential of expanding SME operations in two areas: (a) food preservation and agro-processing; and, (b) construction and house-building trades.

**Eco-Tourism:** There are currently 19 tour companies operating tours into Chin State, mainly for trekking around Mount Victoria and for bird watching. In the short-term, tourism will remain a small-scale niche market. The growth of tourism requires:

Air access points - The greatest impediment to attracting tourist to Chin State is access to both the state and its tourist sites. Without an effective air link which can shuttle tourists to a point within a one to two hour drive to main sites, tourism in Chin State will be limited.

Local tourism administrative structures are under-developed. Tourism to Chin State is mostly organized by companies based outside the state. Establishing a local organizational structure to promote and build the industry is necessary. This will require the formation of a Chin Tourist Association involving locally-based private sector groups. The Tourist Association will then promote the industry via a website.

Studies should be carried out to prepare management plans for key tourist sites in Chin State. These plans should be structured to create the best tourist experience while preserving the integrity and features of the sites studied. Promotional materials should be created. Develop high-grade visual materials for the website and commission development of a basic guidebook on how to access tourist sites. The book should explain and promote attractions. This material should highlight features that would appeal to a specific audience, i.e., trekkers, bird watchers, people interested in orchids or in the history of World War II etc. Create a tourist friendly environment.

At the administrative level, remove unnecessary barriers such as visitor permits/restrictions and promote a welcoming image. Train all levels of the industry from tour-guides to tour company managers, from hotel managers, to chefs, to cleaning staff.

## Infrastructure

**Roads:** The geography and topography of the State creates great challenges in constructing and maintaining roads, which are essential for conducting commerce, market goods and delivering services to the population. The cost of constructing and maintaining a mile of road in the hills of Chin State is many times more than the same length of road in the lowlands. Because the population density is very low it is even more difficult to justify the costs of roads in strictly economic terms. Construction consumes a very large proportion of the Chin State Government's budget (around 48%

of the total budget) and as a result there is very little money left to promote economic activity such as improving agriculture to reduce high levels of rural poverty.

The impact of climate change is likely to be severe in Chin State. The state is expected to experience an increase in spontaneous and severe rainfall, resulting in an increased risk of soil erosion and landslides. This will further undermine the agricultural economy and increase road maintenance costs, as well as disrupting commerce and communications. The State Government needs to consider the impact climate change will have. Modifying road design features to cope with intense rainfall, specifically, road drainage systems will be necessary. More emphasis needs to be placed on slope protection and water management in the very severe conditions experienced in Chin.

**Road maintenance** is another challenge. Because the cost of constructing roads is extremely high in Chin State and there are never enough funds to develop roads needed to open-up the local economy. Funds are allocated at the Union level and there may be a lack of awareness as to how high construction costs actually are. Chin State engineers are forced to design roads to meet a cost requirement rather than an engineering requirement. This places limitations on the incorporation of design features during initial road construction. It then leads to increased maintenance costs and less funds available for the construction of new roads. Until enough funds are available to construct new roads to a standard that will require less maintenance, the situation is likely to get worse.

International funding is available to assist communities to construct roads adapted to the effects of climate change.

**Air Transport:** There are no airfields in Chin State and travellers wishing to connect by air with the rest of Myanmar, or internationally, must travel by road from Kalay airport or Nyaung-U airport, taking up to eight hours. This is a great impediment to tourism and to any outside person or company wanting to invest in a business enterprise in Chin State. To move from being a mainly subsistence agricultural economy to having a viable commercial economy – one which can generate employment for its young people – establishing air connection with the rest of the country, and internationally must be of the highest priority.

**Electricity:** Improvement of electrical services was an incentive offered in the Chin Ceasefire Agreement and the Union Government has taken steps to honour that commitment by expanding the National Grid to cover some parts of Chin State. Increasing overall electricity production and expanding the grid coverage is a high priority of the Union Government. Both the World Bank and the Asian Development Bank (ADB) have recently approved loans and technical assistance to increase both conventional power and renewable energy generation and distribution.

Grid connection for most of the rural areas in the state, however, is unlikely to be physically or economically possible. The population is too scattered and the terrain too rugged. Most rural areas will need to find local solutions to meet their electricity needs. There is good potential for mini hydro plants in many parts of the State.

**Water Supply:** With an average annual rainfall of 74 inches (1880 mm) Chin State should not be short of water, but due to the seasonality of rainfall and a lack of storage infrastructure, shortages do occur. Water sources are natural springs and surface runoff water into natural streams. Discharge from natural springs and streams are decreasing and local experts consider this is due to degradation of forests and the effects of global warming.

As a result, Chin State has a high incidence of waterborne disease (mainly gastro-enteritis) in its population, particularly in rural areas. Apart from the danger this poses to the population, in particular children, there are economic consequences. Reduced labour productivity, as well as extra pressure

and costs incurred by the health sector are a few examples. Over a number of years UNICEF, UNDP, JICA and other donors have been supporting the development of clean drinking water supplies in the rural areas of Chin State. These schemes have had impact in villages where implemented, but most villages have not yet been covered.

Chin State has been allocated MK5 billion (US\$ 5.1 million) from the Union Government's Poverty Fund in 2014/2015 and use of this fund to improve village water supplies could have a significant impact on health outcomes for the rural population. The Government's strategy for rural water supply should be designed to do more than deliver water to the rural community. The critical element is *cleanliness* and protection of the community from waterborne disease. This involves the Health department, which should be identifying and targeting villages with the highest incidence of gastro-enteritis, to achieve the greatest impact from investment. The Education department should also be involved to ensure that schoolchildren are taught about hygiene and the importance of drinking only safe, clean water. Communities receiving water should be educated about the use of toilets and supported to construct toilets that will not contaminate the water supply.

## Disaster Risk Reduction

Finally, there is a need to incorporate Disaster Risk Reduction (DRR) measures into recovery work. Members of the CCERR recommend that government staff and local relief committees receive training on disaster risk reduction and management. GDI<sup>58</sup> already allocated some funds for disaster management training and Sphere Standards for township level relief/rescue committees.

The following was recommended at the CCERR recovery planning workshop:

1. To **pre-plan for next year** might pose more difficulties than this year
2. **Advocate government** to release timely natural disaster alerts and to get the alerts to the grass roots level
3. **Rapid Response Teams** should be established in every Township (Could link with Disaster Risk Reduction and Emergency Preparedness Plan IOM)
4. Village/Village Tract/Township Level **DRR Committees**
5. **Public awareness** campaign on DRR, including regular drills for humanitarian actors
6. **Environmental awareness** raising seminars and activities
7. **Establish environmental monitoring groups** – Forest, Rivers, Resources (Consult Thai Baan Research –KESAN)

## Capacity Building of Chin Civil Society

This flood response is an opportunity to strengthen CBOs and Chin NGOs to more effectively response to emergencies in the longer-term. In many cases, local response groups face challenges in their organizational capacity to respond. In the longer-term, there is a need for them to develop skills in fund/financial management, monitoring and evaluation, networking, and linking with different key actors and stakeholders including the government.

As many tend to work independently, local groups also need stronger coordination between them. The CCERR is set up to address both these gaps.

---

<sup>58</sup> Email update from GDI on 22<sup>nd</sup> September 2015

## Financial Resources

A combined amount of MMK 187 billion (\$156 million) has been committed to the flood response<sup>59</sup>. As of 4<sup>th</sup> October, MMK 28.8 billion (\$24 million) has been spent for flood response. Of this, MMK 1.27 billion or 4% was spent in Chin State.

The Chin State Government estimates they will need \$15.5 million/ 20 billion kyat and have made a request to the Union government.<sup>60</sup>

The known sources of funding include the following:

1. The ADB has earmarked \$3 million for flood recovery, with priority given to Chin State<sup>61</sup>
2. USAID representatives visited northern Chin in mid-August; they have provided US\$4.5 million for the flood relief, but it is not clear how much was used in Chin State
3. LIFT's Upland Project Fund is likely allocating no more than \$5 million for Chin State.
4. Chin networks have raised significant amounts of immediate cash to support basic needs. The Hakha Rescue Committee received MMK 533,089,900 as of 2<sup>nd</sup> September; of this MMK 168,004,078 has been spent as cash grants to households, to build temporary shelters, food transport costs, school expenses, sanitation, etc<sup>62</sup>.
5. World Bank proposed support in several sectors to the Department for Rural Development in Chin State; this needs to be followed up

The CCERR proposes to reach out to other donors who might consider integrating Chin State's recovery plan into funds allocated for climate change, peace-building and the like. Since there are restrictions on international donors to giving funds to unregistered groups, creative ways are needed to channel funds to the local groups working on the ground. Donors and UN agencies can work through NGOs based in Yangon or that already have a presence in Kalay. Additionally, church-based groups can also receive funds from external donors

---

<sup>59</sup> Situation Report 6, 6<sup>th</sup> October 2015, National Natural Disaster Management Committee, Union of Myanmar

<sup>60</sup> <http://www.irrawaddy.org/burma/chin-govt-requests-15-5m-flood-rehabilitation-grant.html>

<sup>61</sup> <http://www.mmmtimes.com/index.php/opinion/16341-chin-state-needs-infrastructure-soon.html>

<sup>62</sup> Hakha Rescue Committee meeting minutes, 3<sup>rd</sup> September 2015

## Annex 1

Table 1 Chin State Government Budget Allocations, 2014-2015			
Area/Department	Approximate Budget (MK million)	Approximate Budget (US\$ million)	%
Construction	54.268	54.2	48
Drinking Water	8.412	8.6	8
Electricity	4.151	4.2	4
Agriculture	2.587	2.5	2
Rural Development	7.510	7.4	7
State Government Office	7.733	7.6	7
General Administration Department	1.622	1.6	1
Judiciary	412	0.4	(<1)
Parliament	1.355	1.3	1
State Audit	218	0.2	(<1)
Fire Department	2.555	2.5	2
Municipal	11.375	11.1	10
Border Affairs	2.489	2.4	2
Basic Education	3.251	3.2	3
Health	2.058	2.0	2
Other	2.802	2.7	3
<b>Total</b>	<b><u>112.797</u></b>	<b><u>110.5</u></b>	<b><u>100%</u></b>